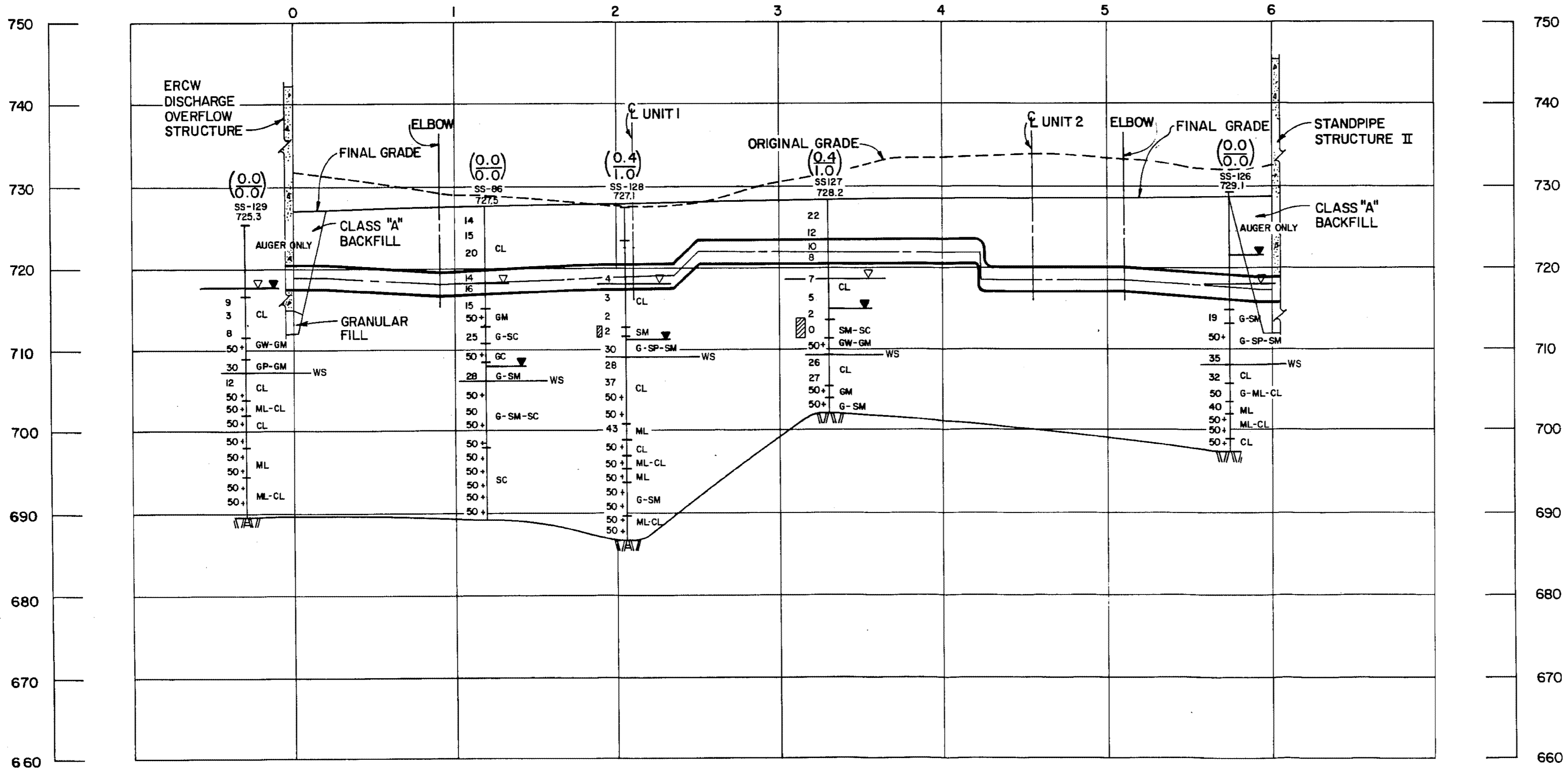


28



(0.4)  
(1.0)

POTENTIAL SETTLEMENT BASED ON 1.5%  $\epsilon$  CRITERIA (INCHES)  
POTENTIAL SETTLEMENT BASED ON 6%  $\epsilon$  CRITERIA (INCHES)

- $\nabla$  DESIGN WATER TABLE
- $\blacktriangledown$  WATER TABLE (24 HR)
- MH SOIL CLASSIFICATION
- I3 BLOW COUNT
- POTENTIALLY LIQUEFIABLE SOIL (SEE NOTE)

-WS WEATHERED SHALE

NOTE:  
1. LIQUEFACTION BASED ON TOP OF GROUND ACCELERATION OF 0.4g AND SEED-IDRISS (1971) CORRELATION FOR SANDS.

Added by Amendment 50

WATTS BAR NUCLEAR PLANT  
FINAL SAFETY  
ANALYSIS REPORT

ERCW PIPELINE  
SECTION C-C  
FIGURE 2.5-573

C-C