

Garrett, Betty

From: Jon Winter (USA - Casper) [Jon.Winter@uranium1.com]
Sent: Tuesday, November 09, 2010 4:03 PM
To: Linton, Ron
Cc: Greg Kruse (USA - Casper)
Subject: MU 7 wells
Attachments: Uranium One CR MU7 MW modifications 11.5.10.pdf; MU7 monitor well completions.pdf; MU7.pdf

Ron, attached is a letter explaining to the WDEQ-LQD what our proposal is for the recompletion of 5 wells at the north end of MU7. We can discuss this in the morning. We talked to Glenn Mooney and Mark Taylor (WDEQ-LQD, District III) on Monday and we can talk also discuss what they want to do.

Jon F. Winter
Manager Environmental & Regulatory Affairs, Wyoming

907 North Poplar
Suite 260
Casper, WY 82601
Phone: 307-234-8235 ext. 331



This email, including any attachments, is confidential and may be privileged. Please check any attachments for viruses before opening them. If you are not the intended recipient, then any disclosure, copying, distribution or use of this email or any attachment, other than to or by the sender, is prohibited. If you received this email in error, please notify us immediately by returning it to the sender and delete this copy from your system.

Received: from mail1.nrc.gov (148.184.176.41) by TWMS01.nrc.gov
(148.184.200.145) with Microsoft SMTP Server id 8.1.393.1; Tue, 9 Nov 2010
16:03:41 -0500

X-Ironport-ID: mail1

X-SBRS: 2.9

X-MID: 26066091

X-fn: Uranium One CR MU7 MW modifications 11.5.10.pdf,
MU7 monitor well completions.pdf, MU7.pdf

X-IronPort-AV: E=Sophos;i="4.59,175,1288584000";
d="pdf?jpg'145?scan'145,208,217,145";a="26066091"

Received: from pe1-2.uranium1.com ([69.90.31.228]) by mail1.nrc.gov with
ESMTP; 09 Nov 2010 16:03:24 -0500

Received: from srv-cas-mx-01.cas.u1.internal (10.10.150.10) by
srv-pe1-mx-01.u1.internal (10.10.10.10) with Microsoft SMTP Server (TLS) id
8.3.106.1; Tue, 9 Nov 2010 13:03:07 -0800

Received: from srv-cas-mx-01.cas.u1.internal ([10.10.150.10]) by
srv-cas-mx-01.cas.u1.internal ([10.10.150.10]) with mapi; Tue, 9 Nov 2010
14:03:06 -0700

From: "Jon Winter (USA - Casper)" <Jon.Winter@uranium1.com>

To: "Linton, Ron" <Ron.Linton@nrc.gov>

CC: "Greg Kruse (USA - Casper)" <Greg.Kruse@uranium1.com>

Date: Tue, 9 Nov 2010 14:03:02 -0700

Subject: MU 7 wells

Thread-Topic: MU 7 wells

Thread-Index: AcuAUX8L8ix/wrn1Q9ixT23UIYPiVw==

Message-ID: <EF2FF00E3AB2A947B8EE03551C596EF00A340A815E@srv-cas-
mx-01.cas.u1.internal>

Accept-Language: en-US

Content-Language: en-US

X-MS-Has-Attach: yes

X-MS-TNEF-Correlator:

acceptlanguage: en-US

Content-Type: multipart/mixed;

boundary="_008_EF2FF00E3AB2A947B8EE03551C596E
F00A340A815Esrvcasmx01cas_"

MIME-Version: 1.0

Return-Path: Jon.Winter@uranium1.com

November 5, 2010

Glenn Mooney
Senior Geologist
Wyoming Department of Environmental Quality
Land Quality Division
2100 West 5th Street
Sheridan, WY 82801

Re: Mine Unit 7 Monitoring Wells, Christensen Ranch In-Situ Operations, Permit No. 478

Dear Mr. Mooney:

As discussed during your recent field inspection on October 20 and our meeting in Casper on October 28, the following information is presented to the WDEQ-LQD District III staff for consideration. As you know in the northwest portion of MU7, there are 5 monitor ring wells (7MW39-2, 7MW40, 7MW41, 7MW42, and 7MW43) that are completed in the K4 Sand. The patterns nearest these monitor wells will target K2 and K3 mineralization. In order to monitor the appropriate sands, it is proposed that we complete each well higher in the K Sand where mining will take place. In these cases we also propose to seal off the K4 Sand interval. Since these wells fall within an area that was previously mined (Module 66), we plan to recompleteness them in the K2 & K3 Sands and reclassify them as ore zone trend wells.

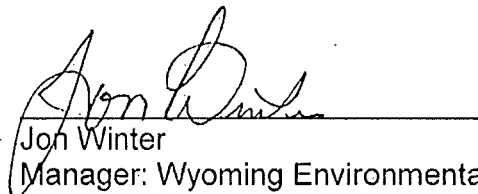
For example, well 7MW39-2 is completed from 480' to 525' in the K4 Sand. Two smaller individual windows will be cut (360' to 390' in the K2 Sand, and 415' to 450' in the K3 Sand). Similar scenarios are proposed for the other four monitor ring wells listed above (see attached cross section).

We also propose to eliminate four monitor wells (7MW36, 7MW37, 6MW21, and 7MW38) from the western lobe of the MU7 monitor ring, as they are too far away from the nearest mining patterns. We would like to use well 6MW19 as a replacement for these wells. 6MW19 is already completed in the appropriate sands (the K2 and K3 Sands). This well is located 380' west of the nearest mining pattern, which meets the monitor well spacing requirement outlined in the permit. It is located 445' from monitor ring well 7MW35, and 527' from monitor ring well 7MW39-2.



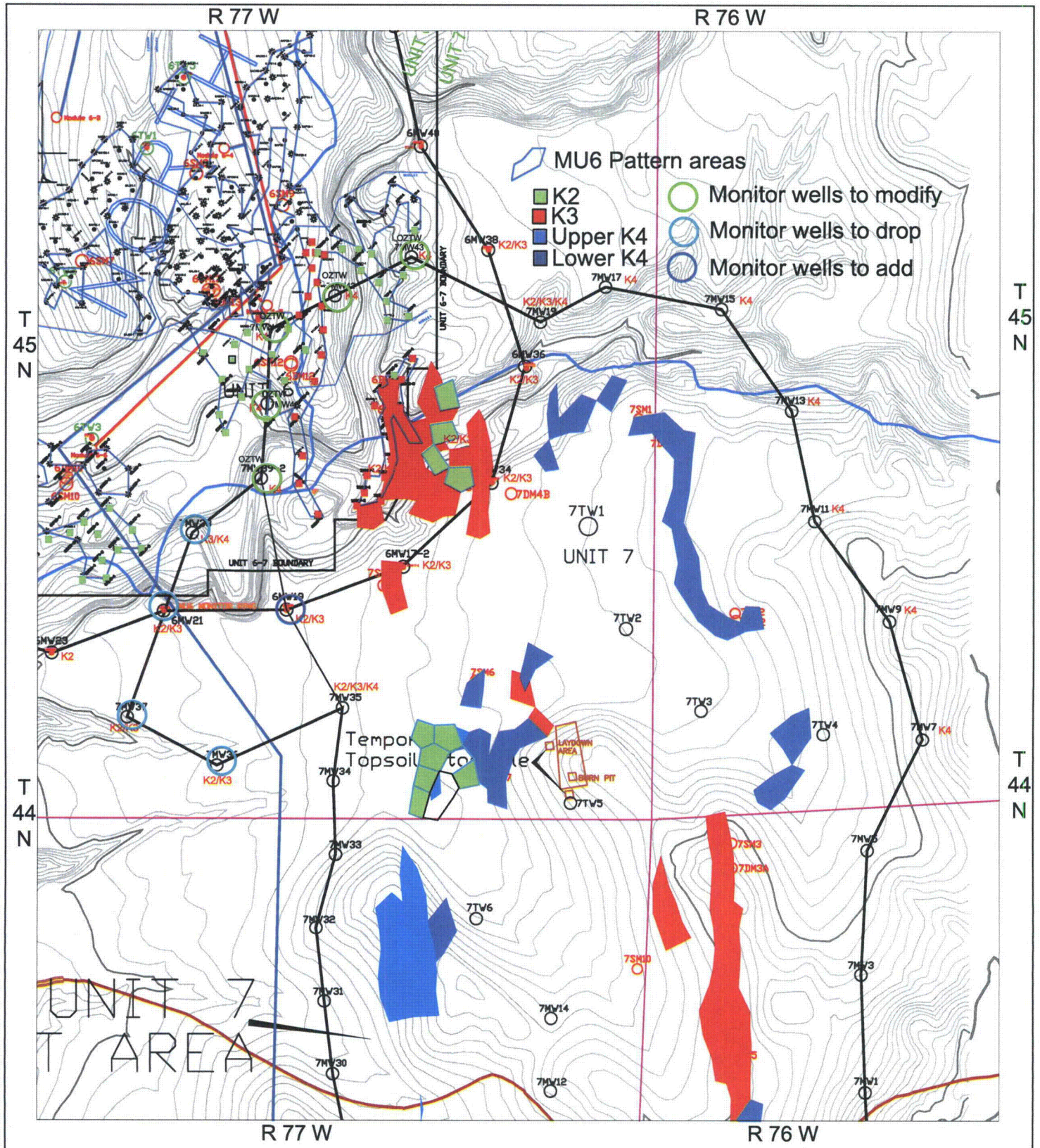
After you have the opportunity to review the attached figures we would like to have a conference call to discuss the path forward regarding these wells.

Sincerely,

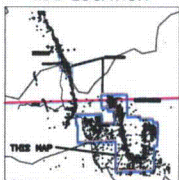


Jon Winter
Manager: Wyoming Environmental and Regulatory Affairs
Uranium One Americas

Uranium One USA, Inc.
A Member of the Uranium One Inc. Group of Companies
tel +1 307-234-8235 • fax +1 307-237-8235
907 N. Poplar Street, Suite 260
Casper, Wyoming 82601
www.uranium1.com



MAP LOCATION



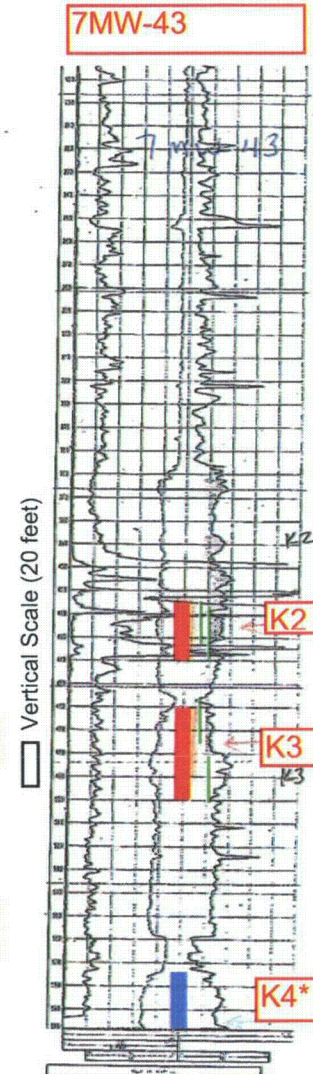
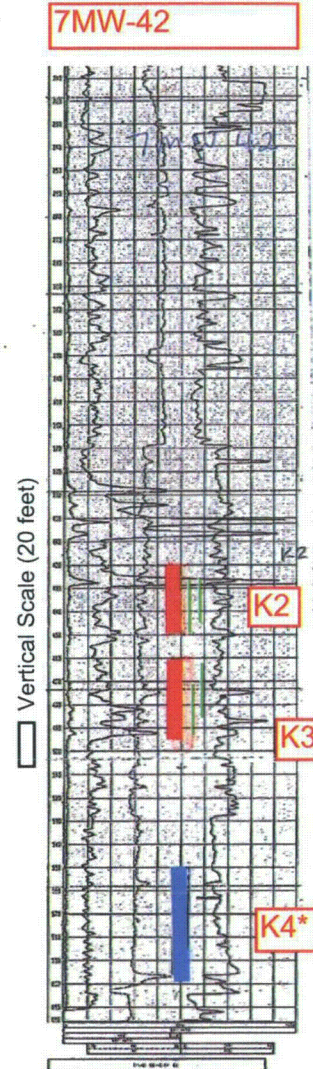
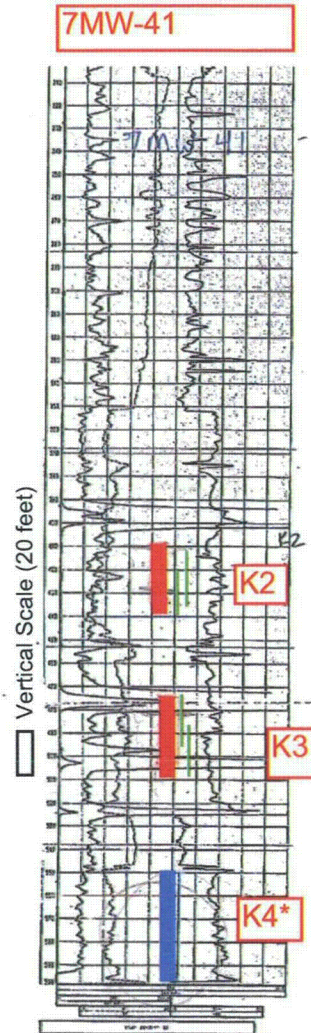
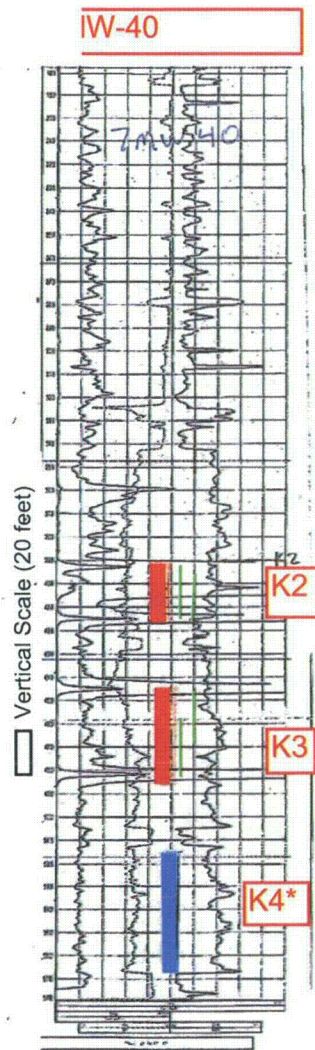
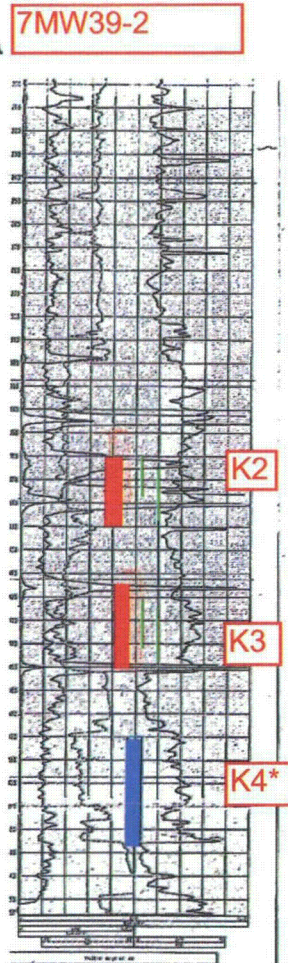
Legend

- Monitor Wells
- Roads
- Two Track Roads
- Fence
- Permit Boundary
- Trunkline
- Powerline
- Mining Area
- Monitor Ring
- Future Mining Area
- Archeological Site
- Existing Wellfield Outline
- Future Wellfield Outline



uraniumone	
Investing in our energy	
907 North Poplar St., Suite 200, Cheyenne, WY 82001 307-234-4238	
Christensen Ranch	
MU 7 Monitor Well Modifications	
Willow Creek	
Johnson & Campbell Counties, Wyoming	
Date: 11/03/2010	By: [Signature]
Drawn by: [Signature]	Checked by: [Signature]
Scale: [Signature]	Sheet: [Signature]

 Vertical Scale (20 feet)



Completions projected from nearest mining patterns