

R 77 W

R 76 W

T 45 N

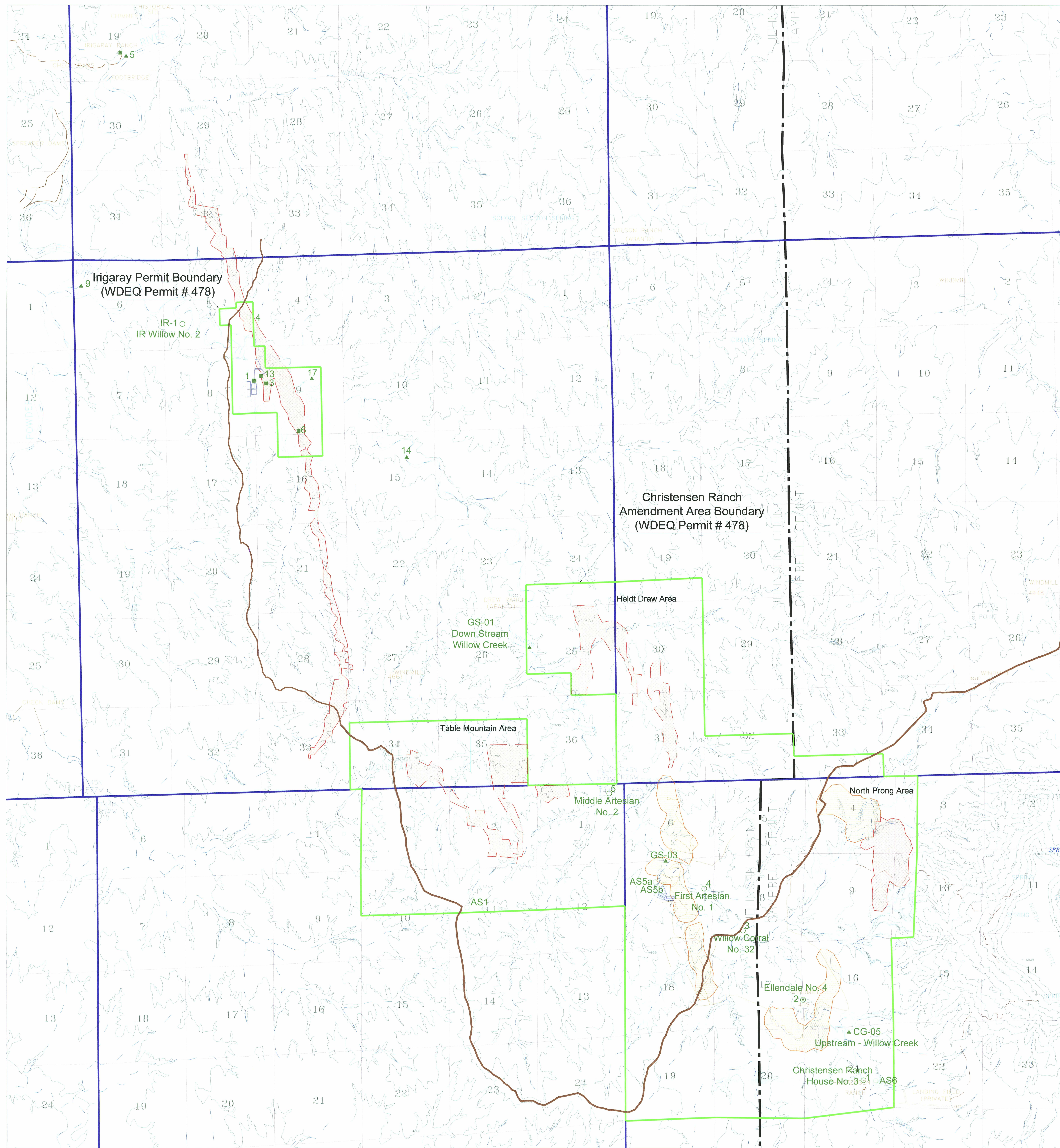
T 45 N

T 44 N

T 44 N

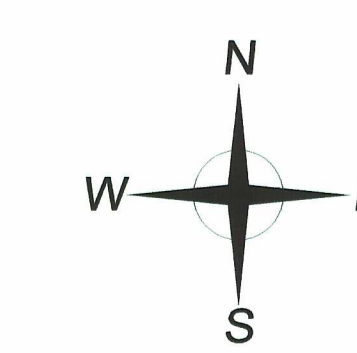
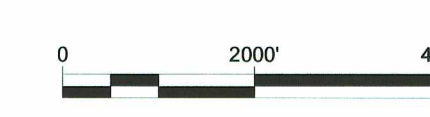
R 77 W


R 76 W



LEGEND

- Wellfield Access Roads
- Haul Road
- Wellfield Area - Existing
- Wellfield Area - Future
- Evaporation Ponds
- Topsoil Stockpile
- Air Sample Location (Radon and Particulate)
- Air Sample Location (Radon and Particulate) Vegetation Sample Location
- Soil Sample Location
- Direct Radiation Monitor Location
- Air Sample Location (Radon)
- Vegetation Sample Location
- Soil Sample Location
- Direct Radiation Monitor Location
- Stock & Domestic Well Sample Location
- Regional Groundwater Monitoring Location
- Upstream & Downstream Surface Water Sample Location





Investing in our energy
907 North Poplar St., Suite 260, Casper, WY 82601 307-234-8235

Figure 5.5
Irigaray & Christensen Ranch
Environmental Monitoring
Station Locations

Geology: Irigaray Drafting: CMH Date: 8-2-2009 Revision: 2 by U1, October 2010 Moved GS-01	State: Wyoming County: Johnson & Campbell Scale: 1"=2000' Drawing ID: FIG IR GR Environment Stations.dwg
---	---

201X