

### NBU WELD JOINT NOTICE #

<b>ORDER #</b> _____	<b>STATION:</b> Salem Unit 1	<b>Yes</b> <b>No</b>
<b>DCP,CR, NOTIF'N #</b> 80101382	<b>DATE:</b> 04/20/2010	<b>Nucl. Class 1/2 Vessel ? (Note 1)</b> <input type="checkbox"/> <input checked="" type="checkbox"/>
<b>CODE JOB</b> _____	<b>SHEET</b> 1 OF 1	(component or valve)
<b>PSEG DRWG</b> 226129, sheet 26		<b>MC Component (Note 1)</b> <input type="checkbox"/> <input checked="" type="checkbox"/>
		<b>Vessel/ Ht. Exchanger (Note 1)</b> <input type="checkbox"/> <input checked="" type="checkbox"/>

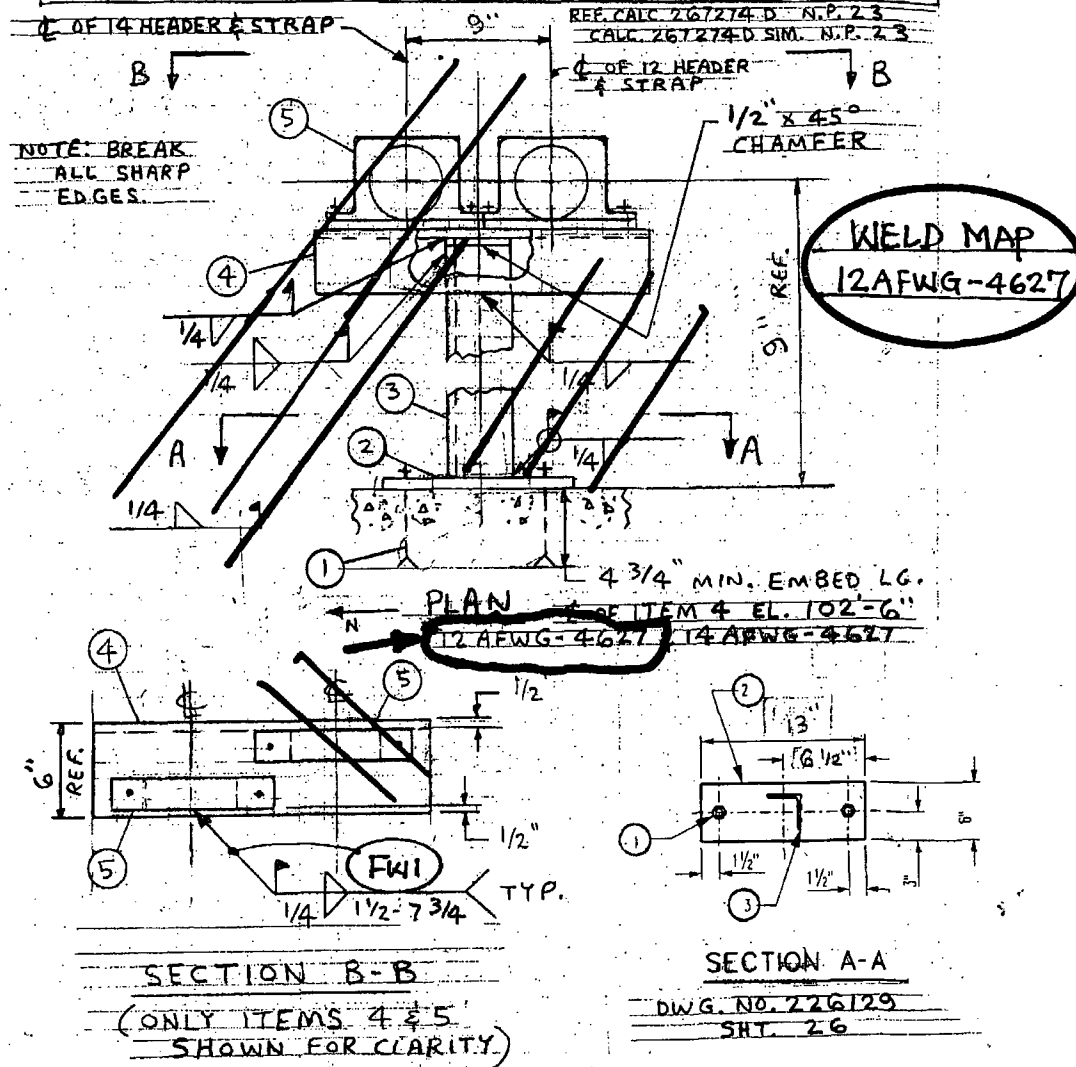
**Note 1:** If answer is yes, copy of Mfg. Code data report and/or Form N5 must be submitted with this request

Weld ID	Design / Pipe Spec	Nuc Class	Seis Class	Base Metal		SR Q R F Qs	Joint Type	Plate / Pipe Thickness / Schedule / Size		Additional NDE
				BM1	BM2					
S1-12-AFWG-4627-FW1	54E	3	1	A-36	A-36	SR	Fillet weld	CC-4 strap/BP-4	Angle 6x4x 1/2"	
S1-14-AFWG-4627-FW1	54E	3	1	A-36	A-36	SR	Fillet weld	CC-4 strap/BP-4	Angle 6x4x 1/2"	
S1-14-AFWG-4627-FW2	54E	3	1	A-36	A-36	SR	Fillet weld	Angle 4x4x 1/2"	Angle 6x4x 1/2"	
S1-14-AFWG-4627-FW3	54E	3	1	A-36	A-36	SR	Fillet weld	Angle 4x4x 1/2"	Angle 6x4x 1/2"	
S1-14-AFWG-4627-FW4	54E	3	1	A-36	A-36	SR	Fillet weld	Angle 4x4x 1/2"	Angle 6x4x 1/2"	
S1-14-AFWG-4627-FW5	54E	3	1	A-36	A-36	SR	Fillet weld	Angle 4x4x 1/2"	Angle 6x4x 1/2"	
S1-14-AFWG-4627-FW6	54E	3	1	A-36	A-36	SR	Fillet weld	Angle 4x4x 1/2"	3/4" PLATE	

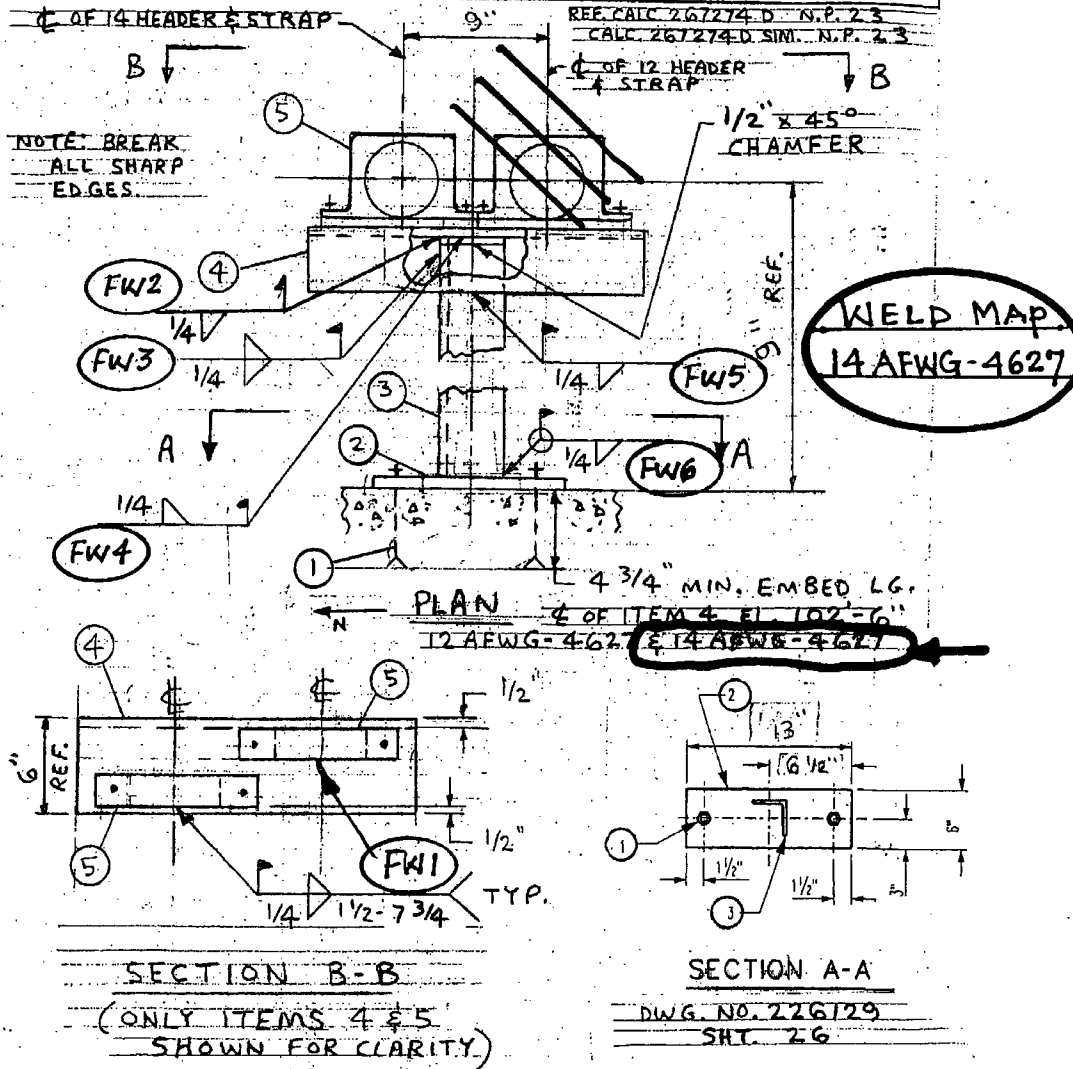
80101382R1  
 SUP10R0  
 Page 1 of 21

6-5

ITEM NO.	NO. REQD	DESCRIPTION
1	2	3/4" $\phi$ x 8" LG. HILT. KWIK 3 BOLT PART NO. 282520 (CS)
2	1	W 3/4" x 6" x 13" W/(2) 13/16" $\phi$ HOLES (SEE SECT. A-A) A-36
3	1	Z 4" x 4" x 1/2" x 0'-9" LG. (CUT LG. TO SUIT) A-36
4	1	Z 6" x 4" x 1/2" x 1'-10" LG. A-36
5	2	CC-4 STRAP TYPE "A" W/BP. 4 (30354)



ITEM NO.	NO. REQD.	DESCRIPTION
1	2	3/4" $\phi$ x 8" LG. HILTI KWIK 3 BOLT PART NO. 282520 (CS)
2	1	3/4" x 6" x 18" W/ (2) 13/16" $\phi$ HOLES (SEE SECT. A-A) A-36
3	1	2 4" x 4" x 1/2" x 0'-9" LG. (CUT LG. TO SUIT) A-36
4	1	2 6" x 4" x 1/2" x 1'-10" LG. A-36
5	2	CC-4 STRAP TYPE "A" W/ BP-4 (30354)



### NBU WELD JOINT NOTICE #

<b>ORDER #</b> _____	<b>STATION:</b> Salem Unit 1	<b>Yes</b> <b>No</b>
<b>DCP, CR, NOTIF'N #</b> 80101382	<b>DATE:</b> 04/20/2010	<b>Nucl. Class 1/2 Vessel ? (Note 1)</b> <input type="checkbox"/> <input checked="" type="checkbox"/>
<b>CODE JOB</b> _____	<b>SHEET</b> 1 OF 1	(component or valve)
<b>PSEG DRWG</b> 226129, sheet 27		<b>MC Component (Note 1)</b> <input type="checkbox"/> <input checked="" type="checkbox"/>
		<b>Vessel/ Ht. Exchanger (Note 1)</b> <input type="checkbox"/> <input checked="" type="checkbox"/>

**Note 1:** If answer is yes, copy of Mfg. Code data report and/or Form N5 must be submitted with this request

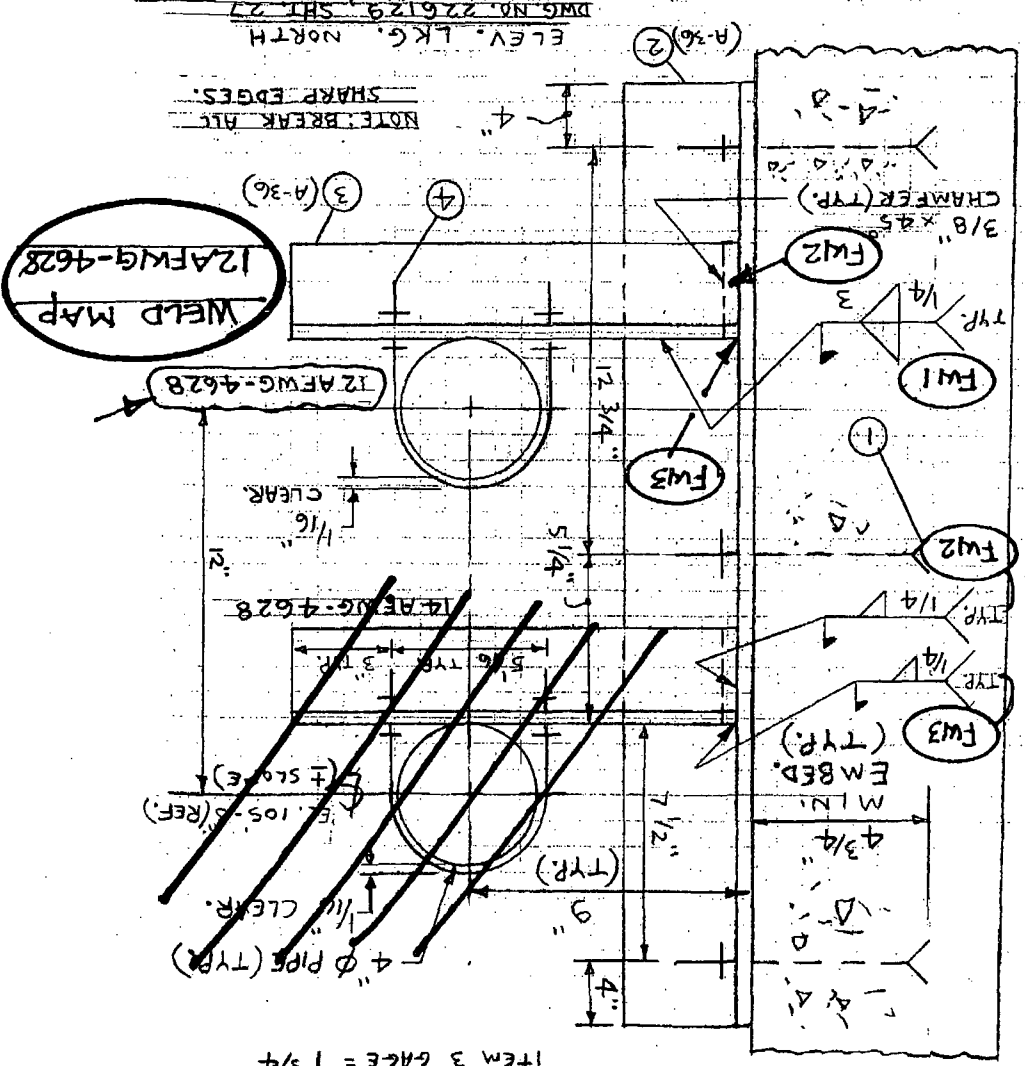
Weld ID	Design / Pipe Spec	Nuc Class	Seis Class	Base Metal		SR Q R F Qs	Joint Type	Plate / Pipe Thickness / Schedule / Size		Additional NDE
				BM1	BM2					
S1-12-AFWG-4628-FW1	54E	3	1	A-36	A-36	SR	Fillet weld	Angle 3x3x 3/8"	Angle 4x4x 1/2"	
S1-12-AFWG-4628-FW2	54E	3	1	A-36	A-36	SR	Fillet weld	Angle 3x3x 3/8"	Angle 4x4x 1/2"	
S1-12-AFWG-4628-FW3	54E	3	1	A-36	A-36	SR	Fillet weld	Angle 3x3x 3/8"	Angle 4x4x 1/2"	
S1-14-AFWG-4628-FW1	54E	3	1	A-36	A-36	SR	Fillet weld	Angle 3x3x 3/8"	Angle 4x4x 1/2"	
S1-14-AFWG-4628-FW2	54E	3	1	A-36	A-36	SR	Fillet weld	Angle 3x3x 3/8"	Angle 4x4x 1/2"	
S1-14-AFWG-4628-FW3	54E	3	1	A-36	A-36	SR	Fillet weld	Angle 3x3x 3/8"	Angle 4x4x 1/2"	

ITEM NO.	NO. REQD.	DESCRIPTION
1	3	3/4" $\phi$ x 8" LG. HILTI KWIK 3 BOLT PART NO. 282520 (CS)
2	1	7" x 4" x 1/2" x 2-9 1/2" LG. W/ (3) 13/16" $\phi$ HOLES ON FACE
3	2	2-3" x 3" x 3/8" x 1-2" LG. W/ (2) 9/16" $\phi$ HOLES ON GAGE
4	2	CSUB-4 U-BOLT (601713)

REF. CALC. 267274 D. N.P. 35

CALC. 267274 D. SIM. N.P. 35

ITEM 2 GAGE = 2 1/2"  
ITEM 3 GAGE = 1 3/4"



NOTE: BREAK ALL SHARP EDGES.

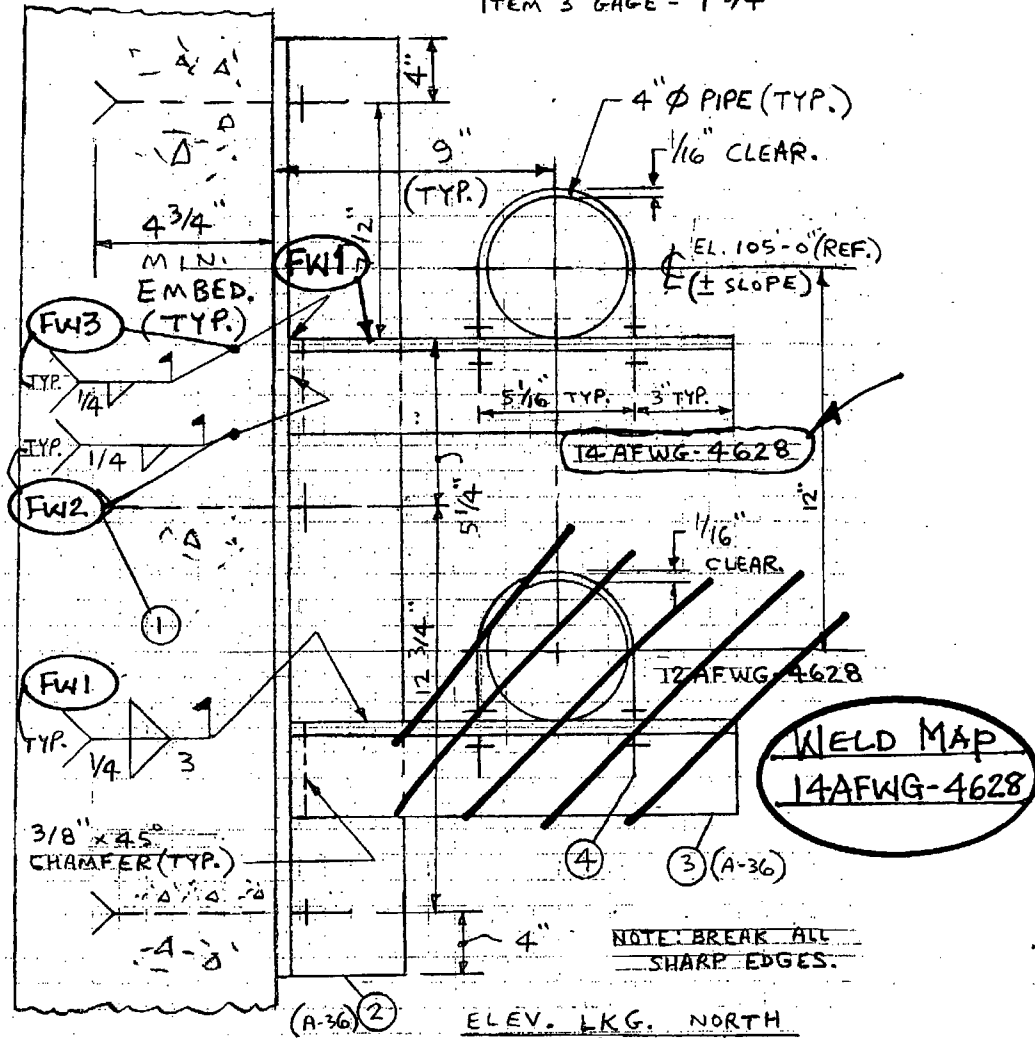
ELEV. LKG. NORTH

DWG. NO. 226129, SH. 27

ITEM NO.	NO. READ	DESCRIPTION
1	3	3/4" $\phi$ x 8" LG. HILTI KWIK 3 BOLT PART NO. 282520 (CS)
2	1	Z 4" x 4" x 1/2" x 2'-9 1/2" LG. W/(3) 13/16" $\phi$ HOLES ON FACE
3	2	Z 3" x 3" x 3/8" x 1'-2" LG. W/(2) 9/16" $\phi$ HOLES ON FACE
4	2	CSUB-4 U-BOLT (601713)

REF. CALC. 267274-D N.P. 35  
 CALC. 267274-D SIM. N.P. 35

ITEM 2 GAGE = 2 1/2"  
 ITEM 3 GAGE = 1 3/4"



**WELD MAP**  
**14AFWG-4628**

NOTE: BREAK ALL SHARP EDGES.

ELEV. LKG. NORTH  
 DWG. NO. 226129, SHEET 27

**NBU WELD JOINT NOTICE #**

<b>ORDER #</b> _____	<b>STATION:</b> Salem Unit 1	<b>Yes</b> <b>No</b>
<b>DCP,CR, NOTIF'N #</b> 80101382	<b>DATE:</b> 04/20/2010	<b>Nucl. Class 1/2 Vessel ? (Note 1)</b> <input type="checkbox"/> <input checked="" type="checkbox"/>
<b>CODE JOB</b> _____	<b>SHEET</b> 1 OF 1	(component or valve)
<b>PSEG DRWG</b> 226129, sheet 28		<b>MC Component (Note 1)</b> <input type="checkbox"/> <input checked="" type="checkbox"/>
		<b>Vessel/ Ht. Exchanger (Note 1)</b> <input type="checkbox"/> <input checked="" type="checkbox"/>

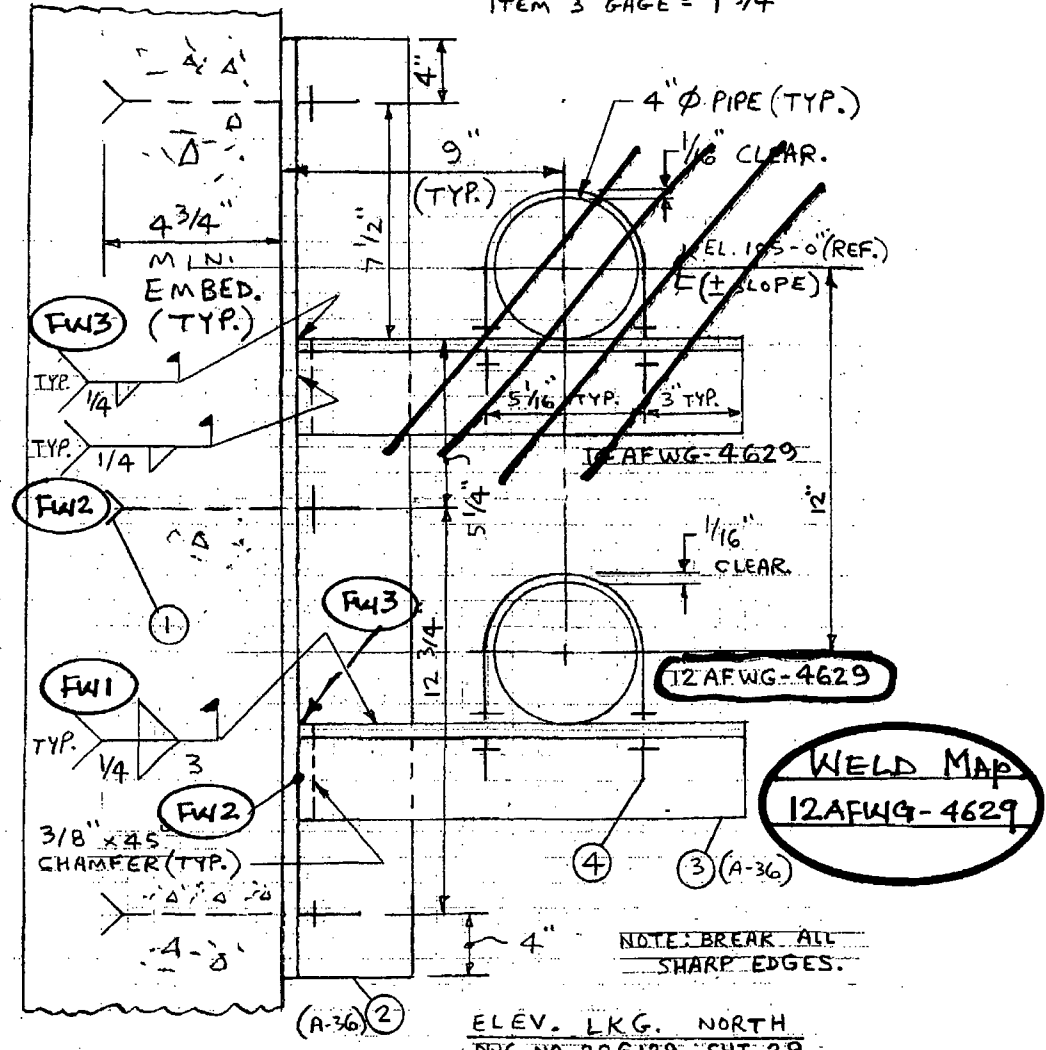
**Note 1:** If answer is yes, copy of Mfg. Code data report and/or Form N5 must be submitted with this request

Weld ID	Design / Pipe Spec	Nuc Class	Seis Class	Base Metal		SR Q R F Qs	Joint Type	Plate / Pipe Thickness / Schedule / Size		Additional NDE
				BM1	BM2					
S1-12-AFWG-4629-FW1	54E	3	1	A-36	A-36	SR	Fillet weld	Angle 3x3x 3/8"	Angle 4x4x 1/2"	
S1-12-AFWG-4629-FW2	54E	3	1	A-36	A-36	SR	Fillet weld	Angle 3x3x 3/8"	Angle 4x4x 1/2"	
S1-12-AFWG-4629-FW3	54E	3	1	A-36	A-36	SR	Fillet weld	Angle 3x3x 3/8"	Angle 4x4x 1/2"	
S1-14-AFWG-4629-FW1	54E	3	1	A-36	A-36	SR	Fillet weld	Angle 3x3x 3/8"	Angle 4x4x 1/2"	
S1-14-AFWG-4629-FW2	54E	3	1	A-36	A-36	SR	Fillet weld	Angle 3x3x 3/8"	Angle 4x4x 1/2"	
S1-14-AFWG-4629-FW3	54E	3	1	A-36	A-36	SR	Fillet weld	Angle 3x3x 3/8"	Angle 4x4x 1/2"	

ITEM NO.	NO. REQD.	DESCRIPTION
1	3	3/4" $\phi$ x 8" LG. HILTI KWIK 3 BOLT PART NO. 282520 (CS)
2	1	Z 4" x 4" x 1/2" x 2'-9 1/2" LG. W/(3) 13/16" $\phi$ HOLES ON FACE
3	2	Z 3" x 3" x 3/8" x 1'-2" LG. W/(2) 9/16" $\phi$ HOLES ON FACE
4	2	CSUB-4 U-BOLT (601713)

REF. CALC. 267274 D. N.P. 40  
 CALC. 267274 D. SIM. N.P. 40

ITEM 2 GAGE = 2 1/2"  
 ITEM 3 GAGE = 1 3/4"



ELEV. LKG. NORTH  
 DWG. NO. 226129, SHT. 2B

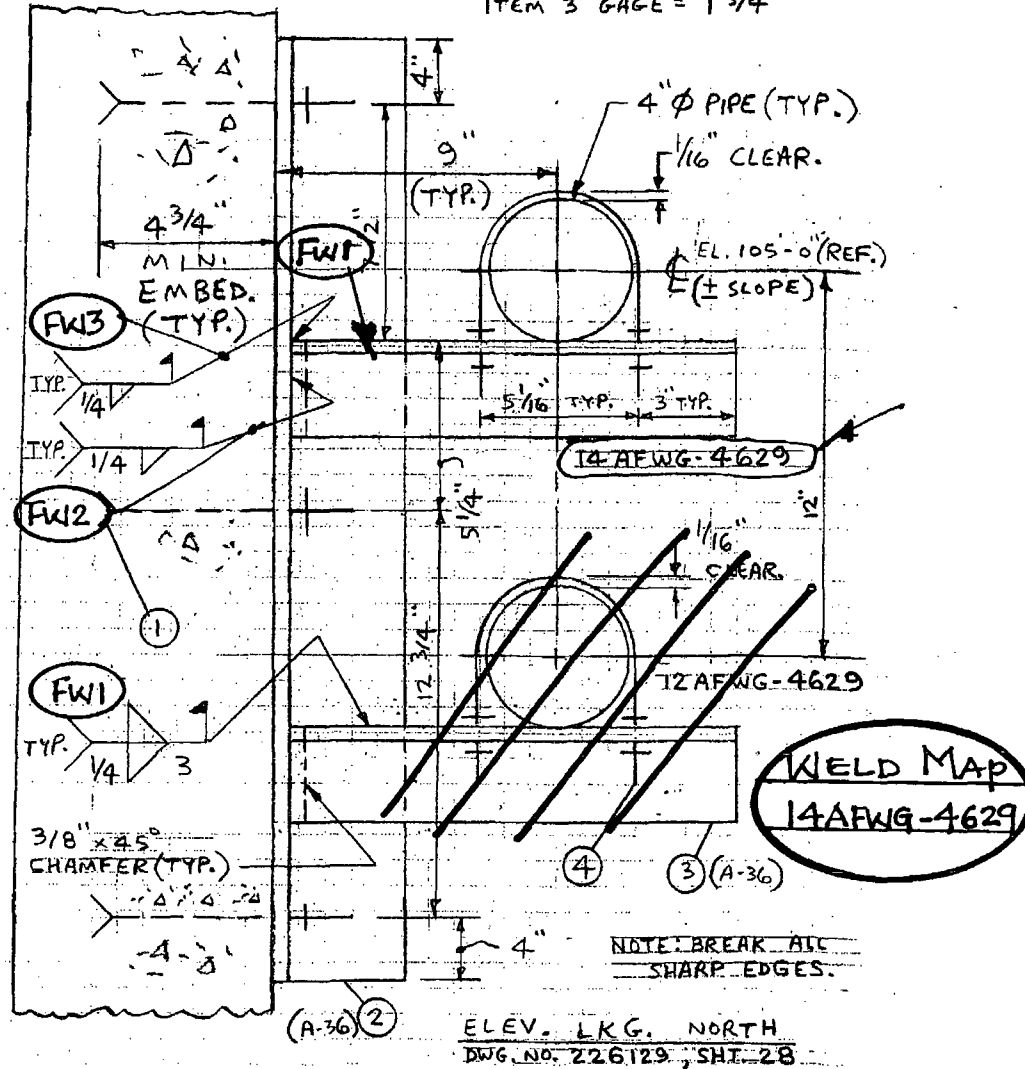


ITEM NO.	NO. REQD.	DESCRIPTION
1	3	3/4" $\phi$ x 8" LG. HILTI KWIK 3 BOLT PART NO. 282520 (CS)
2	1	L 4" x 4" x 1/2" x 2'-9 1/2" LG. W/(3) 13/16" $\phi$ HOLES ON FACE
3	2	L 3" x 3" x 3/8" x 1'-2" LG. W/(2) 9/16" $\phi$ HOLES ON FACE
4	2	C SUB-4 U-BOLT (601713)

REF. CALC. 267274-D N.P. 40

CALC. 267274-D SIM. N.P. 40

ITEM 2 GAGE = 2 1/2"  
ITEM 3 GAGE = 1 3/4"



**NBU WELD JOINT NOTICE #**

<b>ORDER #</b> _____	<b>STATION:</b> Salem Unit 1	<b>Yes</b> <b>No</b>
<b>DCP,CR, NOTIF'N #</b> 80101382	<b>DATE:</b> 04/20/2010	<b>Nucl. Class 1/2 Vessel ? (Note 1)</b> <input type="checkbox"/> <input checked="" type="checkbox"/>
<b>CODE JOB</b> _____	<b>SHEET</b> 1 OF 1	(component or valve)
<b>PSEG DRWG</b> 226129, sheet 29		<b>MC Component (Note 1)</b> <input type="checkbox"/> <input checked="" type="checkbox"/>
		<b>Vessel/ Ht. Exchanger (Note 1)</b> <input type="checkbox"/> <input checked="" type="checkbox"/>

**Note 1:** If answer is yes, copy of Mfg. Code data report and/or Form N5 must be submitted with this request

Weld ID	Design / Pipe Spec	Nuc Class	Seis Class	Base Metal		SR Q R F Qs	Joint Type	Plate / Pipe Thickness / Schedule / Size		Additional NDE
				BM1	BM2					
S1-12-AFWG-4630-FW1	54E	3	1	A-36	A-36	SR	Fillet weld	Angle 3x3x 3/8"	Angle 4x4x 1/2"	
S1-12-AFWG-4630-FW2	54E	3	1	A-36	A-36	SR	Fillet weld	Angle 3x3x 3/8"	Angle 4x4x 1/2"	
S1-12-AFWG-4630-FW3	54E	3	1	A-36	A-36	SR	Fillet weld	Angle 3x3x 3/8"	Angle 4x4x 1/2"	
S1-14-AFWG-4630-FW1	54E	3	1	A-36	A-36	SR	Fillet weld	Angle 3x3x 3/8"	Angle 4x4x 1/2"	
S1-14-AFWG-4630-FW2	54E	3	1	A-36	A-36	SR	Fillet weld	Angle 3x3x 3/8"	Angle 4x4x 1/2"	
S1-14-AFWG-4630-FW3	54E	3	1	A-36	A-36	SR	Fillet weld	Angle 3x3x 3/8"	Angle 4x4x 1/2"	

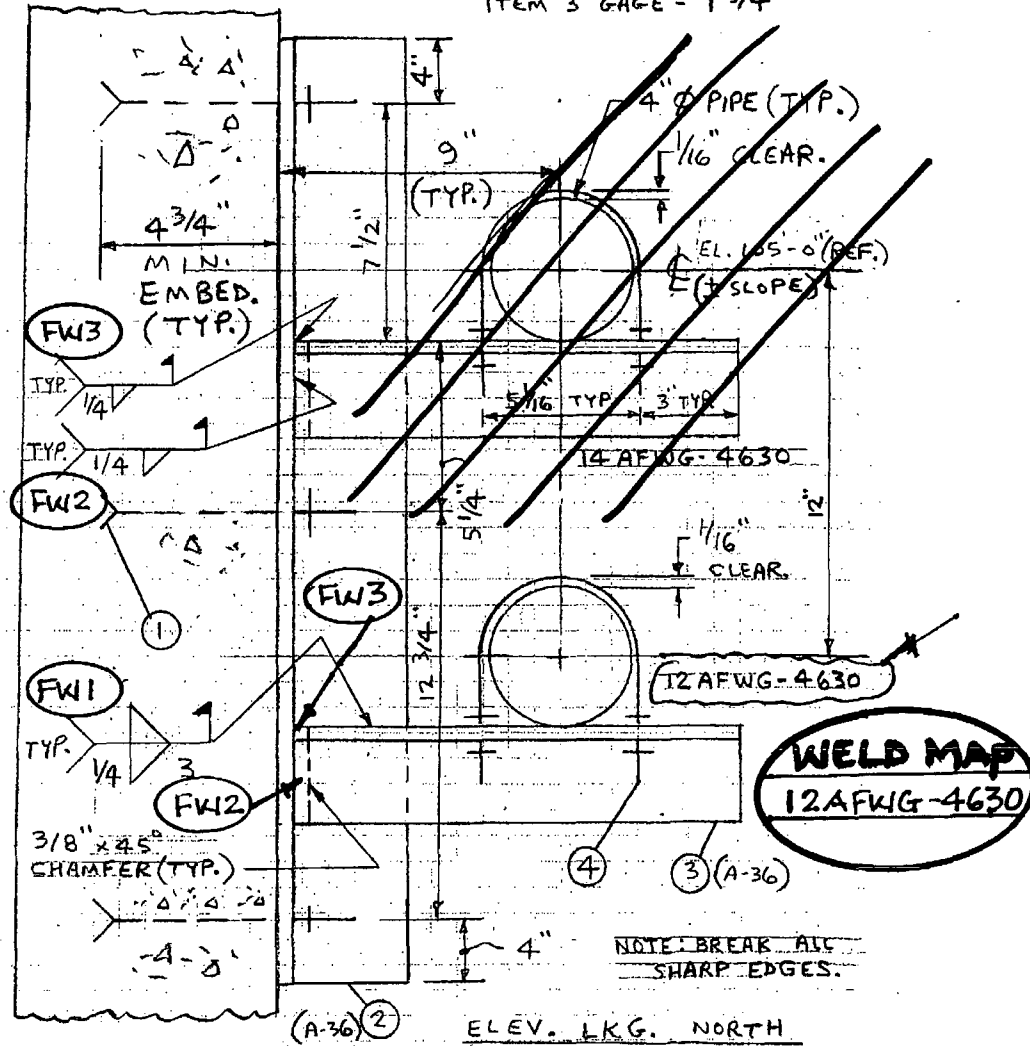
ITEM NO.	NO. READ	DESCRIPTION
1	3	3/4" $\phi$ x 8" LG. HILTI KWIK 3 BOLT PART NO. 282520 (CS)
2	1	L 4" x 4" x 1/2" x 2'-9 1/2" LG. W/(3) 13/16" $\phi$ HOLES ON GAGE
3	2	L 3" x 3" x 3/8" x 1'-2" LG. W/(2) 9/16" $\phi$ HOLES ON GAGE
4	2	CSUB=4 U-BOLT (601713)

REF. CALC. 267274-D N.P. 43

CALC. 267274-D SIM. N.P. 43

ITEM 2 GAGE = 2 1/2"

ITEM 3 GAGE = 1 3/4"



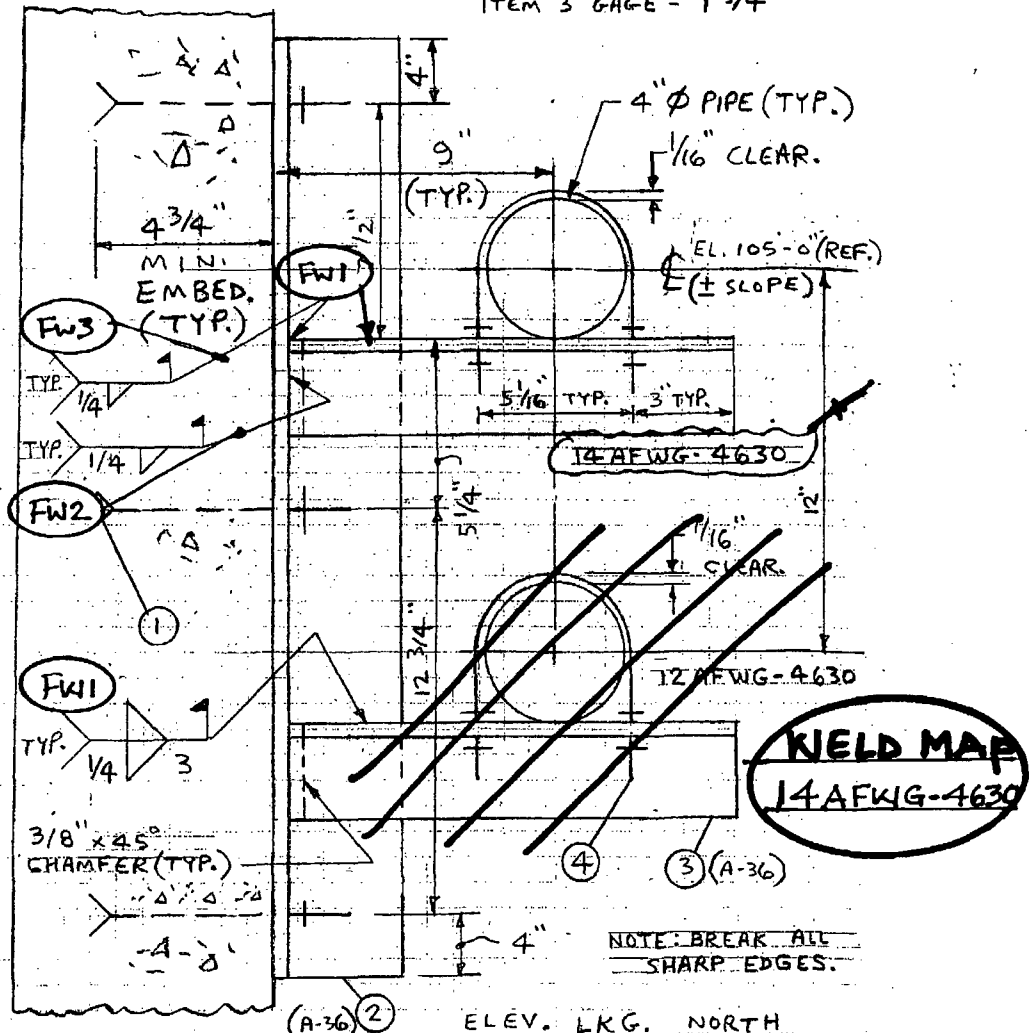
**WELD MAP**  
 12 AFWG-4630

ITEM NO.	NO. REQD.	DESCRIPTION
1	3	3/4" $\phi$ x 8" LG. HILTI KWIK 3 BOLT PART NO. 282520 (CS)
2	1	L 4" x 4" x 1/2" x 2'-9 1/2" LG. W/(3) 13/16" $\phi$ HOLES ON FACE
3	2	L 3" x 3" x 3/8" x 1'-2" LG. W/(2) 9/16" $\phi$ HOLES ON FACE
4	2	C SUB-4 U-BOLT (601713)

REF. CALC. 267274 D. N.P. 43

CALC. 267274 D. SIM. N.P. 43

ITEM 2 GAGE = 2 1/2"  
ITEM 3 GAGE = 1 3/4"



NOTE: BREAK ALL SHARP EDGES.

ELEV. L.R.G. NORTH  
DWG. NO. 226129, SHT. 29

**NBU WELD JOINT NOTICE #**

<b>ORDER #</b> _____	<b>STATION:</b> Salem Unit 1	<b>Yes</b> <input type="checkbox"/> <b>No</b> <input checked="" type="checkbox"/>
<b>DCP,CR, NOTIF'N #</b> 80101382	<b>DATE:</b> 04/20/2010	<b>Nucl. Class 1/2 Vessel ? (Note 1)</b> <input type="checkbox"/> <input checked="" type="checkbox"/>
<b>CODE JOB</b> _____	<b>SHEET</b> 1 OF 1	(component or valve)
<b>PSEG DRWG</b> 226129, sheet 30		<b>MC Component (Note 1)</b> <input type="checkbox"/> <input checked="" type="checkbox"/>
		<b>Vessel/ Ht. Exchanger (Note 1)</b> <input type="checkbox"/> <input checked="" type="checkbox"/>

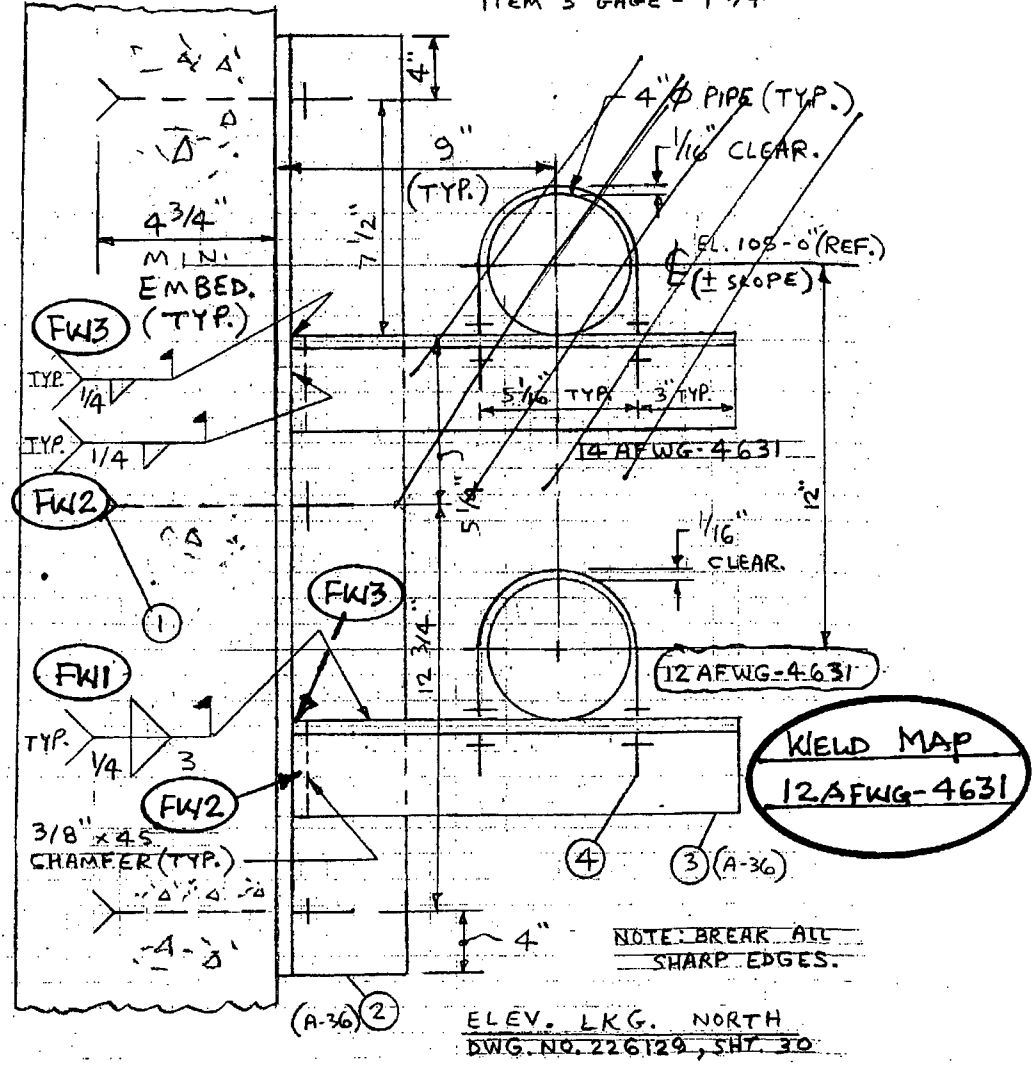
**Note 1:** If answer is yes, copy of Mfg. Code data report and/or Form N5 must be submitted with this request

Weld ID	Design / Pipe Spec	Nuc Class	Seis Class	Base Metal		SR Q R F Qs	Joint Type	Plate / Pipe Thickness / Schedule / Size		Additional NDE
				BM1	BM2					
S1-12-AFWG-4631-FW1	54E	3	1	A-36	A-36	SR	Fillet weld	Angle 3x3x 3/8"	Angle 4x4x 1/2"	
S1-12-AFWG-4631-FW2	54E	3	1	A-36	A-36	SR	Fillet weld	Angle 3x3x 3/8"	Angle 4x4x 1/2"	
S1-12-AFWG-4631-FW3	54E	3	1	A-36	A-36	SR	Fillet weld	Angle 3x3x 3/8"	Angle 4x4x 1/2"	
S1-14-AFWG-4631-FW1	54E	3	1	A-36	A-36	SR	Fillet weld	Angle 3x3x 3/8"	Angle 4x4x 1/2"	
S1-14-AFWG-4631-FW2	54E	3	1	A-36	A-36	SR	Fillet weld	Angle 3x3x 3/8"	Angle 4x4x 1/2"	
S1-14-AFWG-4631-FW3	54E	3	1	A-36	A-36	SR	Fillet weld	Angle 3x3x 3/8"	Angle 4x4x 1/2"	

ITEM NO.	NO. REQD	DESCRIPTION
1	3	3/4" $\phi$ x 8" LG. HILTI KWIK 3 BOLT PART NO. 282520 (CS)
2	1	Z 4" x 4" x 1/2" x 2'-9 1/2" LG. W/(3) 13/16" $\phi$ HOLES ON FACE
3	2	Z 3" x 3" x 3/8" x 1'-2" LG. W/(2) 9/16" $\phi$ HOLES ON FACE
4	2	CSUB-4 U-BOLT (601713)

REF. CALC. 267274-D N.P. 45  
 CALC. 267274-D SIM. N.P. 45

ITEM 2 GAGE = 2 1/2"  
 ITEM 3 GAGE = 1 3/4"



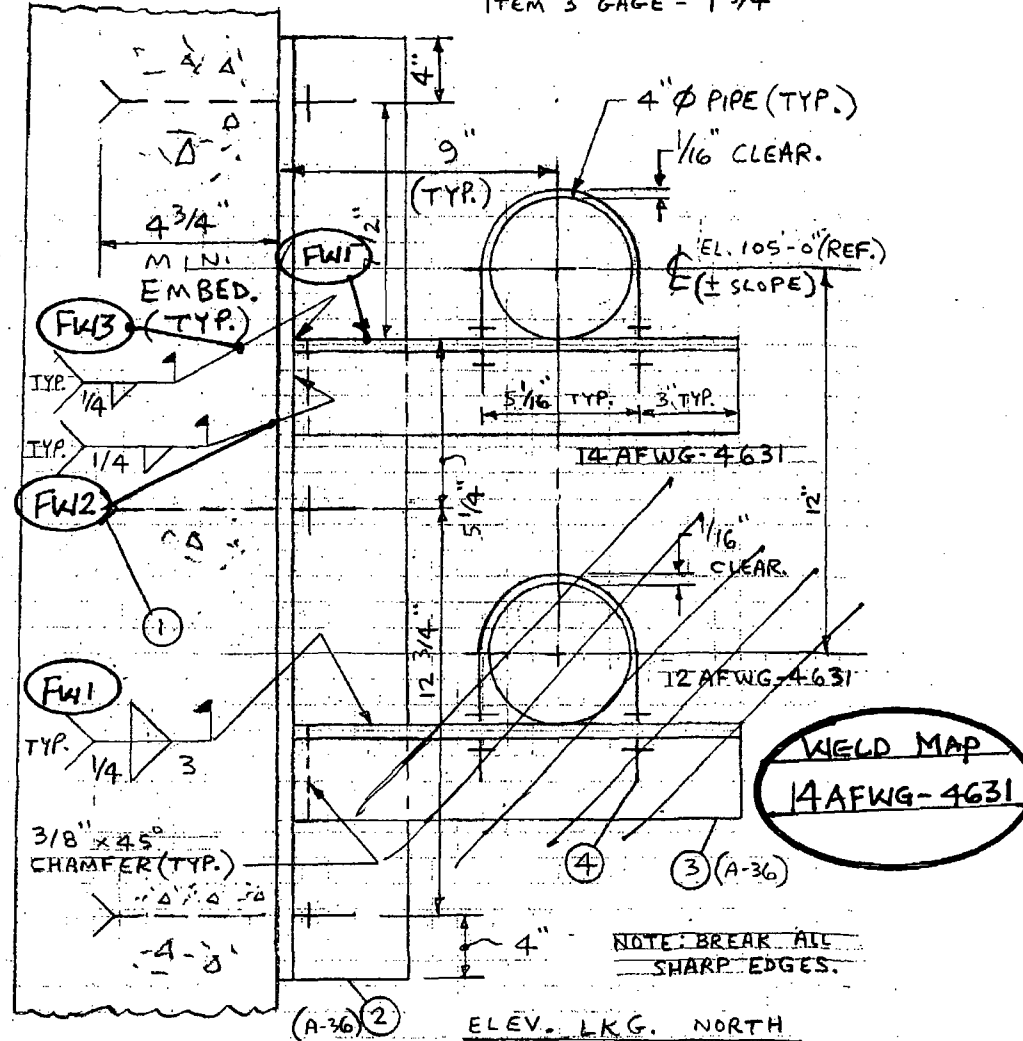
ITEM NO.	NO. REQD.	DESCRIPTION
1	3	3/4" $\phi$ x 8" LG. HILTI KWIK 3 BOLT PART NO. 282520 (CS)
2	1	L 4" x 4" x 1/2" x 2'-9 1/2" LG. W/(3) 13/16" $\phi$ HOLES ON FACE
3	2	L 3" x 3" x 3/8" x 1'-2" LG. W/(2) 9/16" $\phi$ HOLES ON FACE
4	2	C SUB-4 U-BOLT (601713)

REF. CALC. 267274-D N.P. 45

CALC. 267274-D SIM. N.P. 45

ITEM 2 GAGE = 2 1/2"

ITEM 3 GAGE = 1 3/4"



ELEV. LKG. NORTH  
DWG. NO. 226129, SHT. 30

**NBU WELD JOINT NOTICE #**

<b>ORDER #</b> _____	<b>STATION:</b> Salem Unit 1	<b>Yes</b>	<b>No</b>
<b>DCP,CR, NOTIF'N #</b> 80101382	<b>DATE:</b> 04/20/2010	<b>Nucl. Class 1/2 Vessel ? (Note 1)</b> <input type="checkbox"/>	<input checked="" type="checkbox"/>
<b>CODE JOB</b> _____	<b>SHEET</b> 1 OF 1	(component or valve)	
<b>PSEG DRWG</b> 226129, sheet 31		<b>MC Component (Note 1)</b> <input type="checkbox"/>	<input checked="" type="checkbox"/>
		<b>Vessel/ Ht. Exchanger (Note 1)</b> <input type="checkbox"/>	<input checked="" type="checkbox"/>

**Note 1:** If answer is yes, copy of Mfg. Code data report and/or Form N5 must be submitted with this request

Weld ID	Design / Pipe Spec	Nuc Class	Seis Class	Base Metal		SR Q R F Qs	Joint Type	Plate / Pipe Thickness / Schedule / Size		Additional NDE
				BM1	BM2					
S1-12-AFWG-4632-FW1	54E	3	1	A-36	A-36	SR	Fillet weld	Angle 3x3x 3/8"	Angle 4x4x 1/2"	
S1-12-AFWG-4632-FW2	54E	3	1	A-36	A-36	SR	Fillet weld	Angle 3x3x 3/8"	Angle 4x4x 1/2"	
S1-12-AFWG-4632-FW3	54E	3	1	A-36	A-36	SR	Fillet weld	Angle 3x3x 3/8"	Angle 4x4x 1/2"	
S1-14-AFWG-4632-FW1	54E	3	1	A-36	A-36	SR	Fillet weld	Angle 3x3x 3/8"	Angle 4x4x 1/2"	
S1-14-AFWG-4632-FW2	54E	3	1	A-36	A-36	SR	Fillet weld	Angle 3x3x 3/8"	Angle 4x4x 1/2"	
S1-14-AFWG-4632-FW3	54E	3	1	A-36	A-36	SR	Fillet weld	Angle 3x3x 3/8"	Angle 4x4x 1/2"	

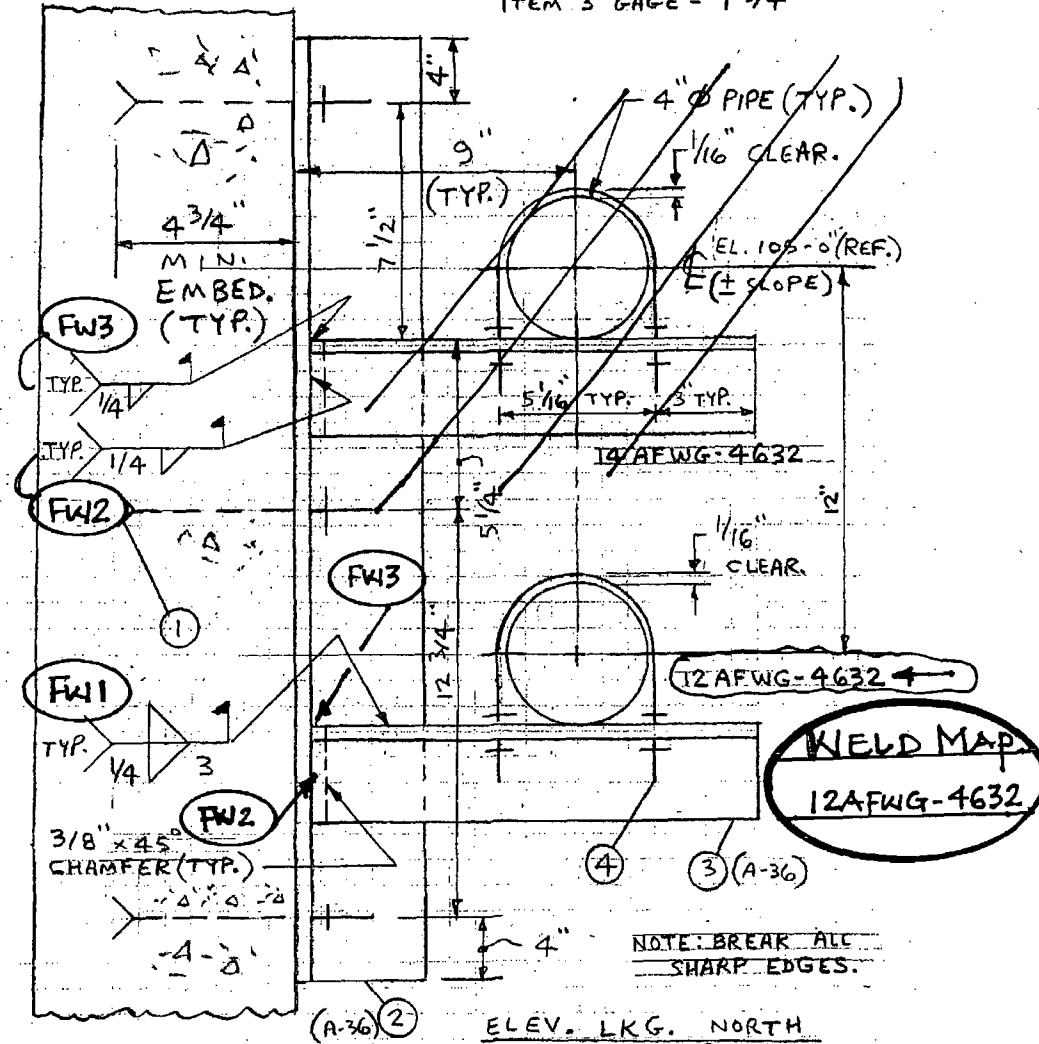


ITEM NO.	NO. REQS.	DESCRIPTION
1	3	3/4" $\phi$ x 8" LG. HILTI KWIK 3 BOLT PART NO. 282520 (CS)
2	1	2 4" x 4" x 1/2" x 2'-9 1/2" LG. W/(3) 13/16" $\phi$ HOLES ON FACE
3	2	2 3" x 3" x 3/8" x 1'-2" LG. W/(2) 9/16" $\phi$ HOLES ON FACE
4	2	CSUB-4 U-BOLT (601713)

REF. CALC. 267274-D N.P. 47

CALC. 267274-D SIM. N.P. 47

ITEM 2 GAGE = 2 1/2"  
ITEM 3 GAGE = 1 3/4"

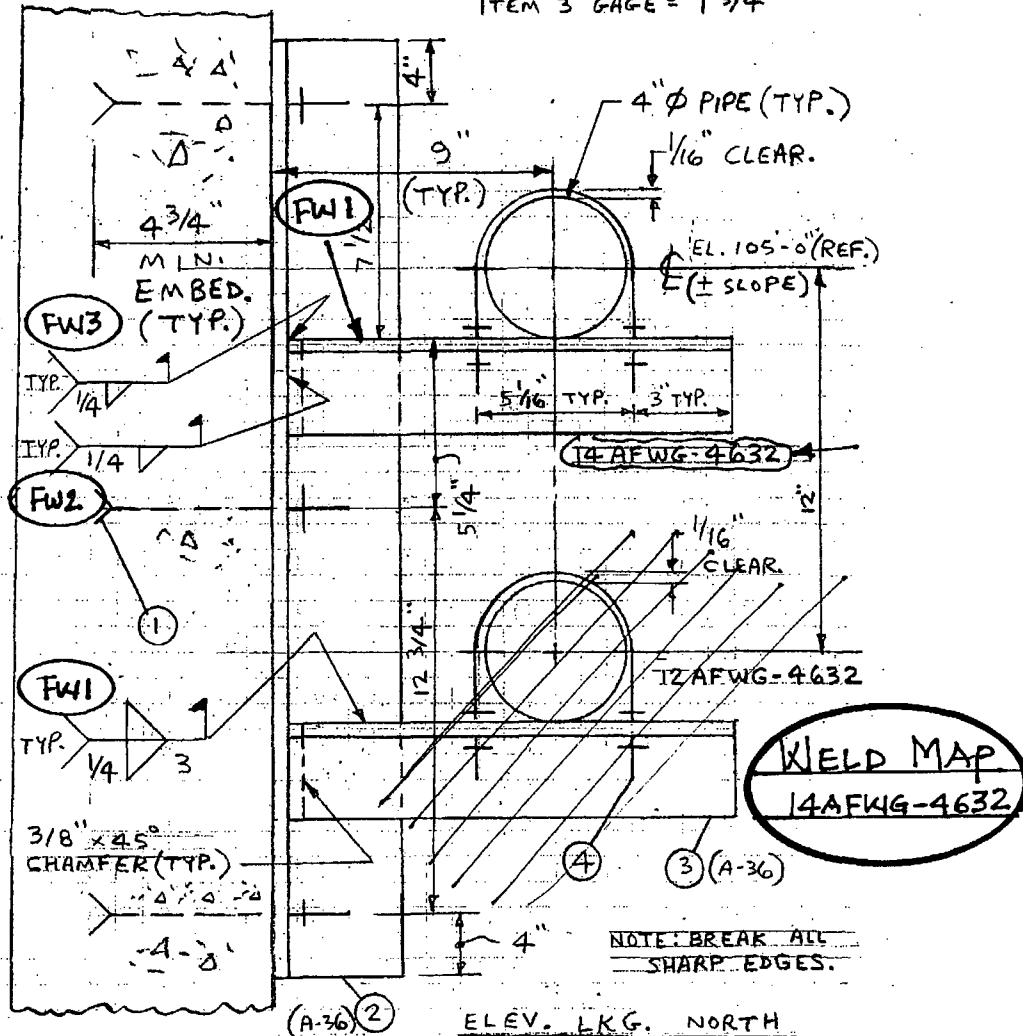


ITEM NO.	NO. REQD.	DESCRIPTION
1	3	3/4" $\phi$ x 8" LG. HILTI KWIK 3 BOLT PART NO. 282520 (CS)
2	1	L 4" x 4" x 1/2" x 2-9 1/2" LG. W/(3) 13/16" $\phi$ HOLES ON GAGE
3	2	L 3" x 3" x 3/8" x 1'-2" LG. W/(2) 9/16" $\phi$ HOLES ON GAGE
4	2	C SUB-4 U-BOLT (601713)

REF. CALC. 267274-D N.P. 47

CALC. 267274-D SIM. N.P. 47

ITEM 2 GAGE = 2 1/2"  
ITEM 3 GAGE = 1 3/4"



**NBU WELD JOINT NOTICE #**

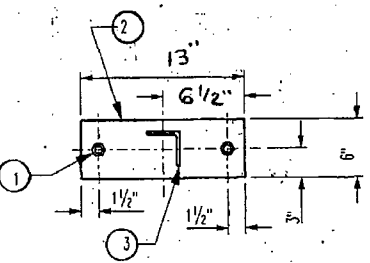
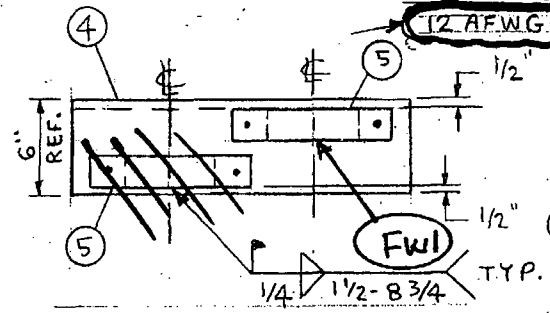
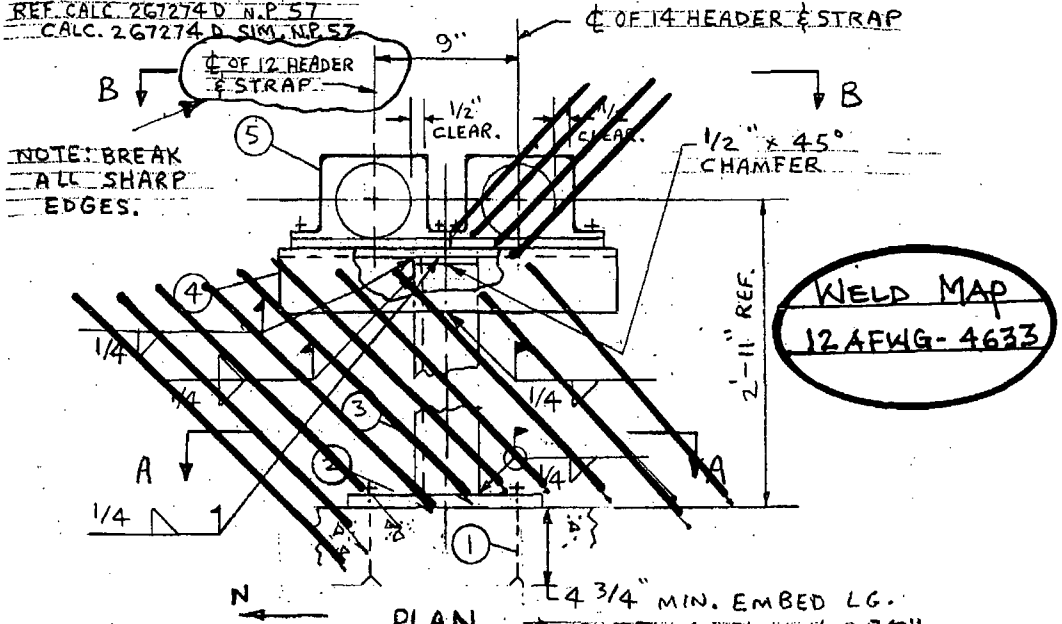
<b>ORDER #</b> _____	<b>STATION:</b> Salem Unit 1	<b>Yes</b>	<b>No</b>
<b>DCP,CR, NOTIF'N #</b> 80101382	<b>DATE:</b> 04/20/2010	<b>Nucl. Class 1/2 Vessel ? (Note 1)</b> <input type="checkbox"/>	<input checked="" type="checkbox"/>
<b>CODE JOB</b> _____	<b>SHEET</b> 1 OF 1	(component or valve)	
<b>PSEG DRWG</b> 226129, sheet 32		<b>MC Component (Note 1)</b> <input type="checkbox"/>	<input checked="" type="checkbox"/>
		<b>Vessel/ Ht. Exchanger (Note 1)</b> <input type="checkbox"/>	<input checked="" type="checkbox"/>

**Note 1:** If answer is yes, copy of Mfg. Code data report and/or Form N5 must be submitted with this request

Weld ID	Design / Pipe Spec	Nuc Class	Seis Class	Base Metal		SR Q R F Qs	Joint Type	Plate / Pipe Thickness / Schedule / Size		Additional NDE
				BM1	BM2					
S1-12-AFWG-4633-FW1	54E	3	1	A-36	A-36	SR	Fillet weld	CC-4 strap/BP-4	Angle 6x4x 1/2"	
S1-14-AFWG-4633-FW1	54E	3	1	A-36	A-36	SR	Fillet weld	CC-4 strap/BP-4	Angle 6x4x 1/2"	
S1-14-AFWG-4633-FW2	54E	3	1	A-36	A-36	SR	Fillet weld	Angle 4x4x 1/2"	Angle 6x4x 1/2"	
S1-14-AFWG-4633-FW3	54E	3	1	A-36	A-36	SR	Fillet weld	Angle 4x4x 1/2"	Angle 6x4x 1/2"	
S1-14-AFWG-4633-FW4	54E	3	1	A-36	A-36	SR	Fillet weld	Angle 4x4x 1/2"	Angle 6x4x 1/2"	
S1-14-AFWG-4633-FW5	54E	3	1	A-36	A-36	SR	Fillet weld	Angle 4x4x 1/2"	Angle 6x4x 1/2"	
S1-14-AFWG-4633-FW6	54E	3	1	A-36	A-36	SR	Fillet weld	Angle 4x4x 1/2"	3/4" PLATE	

ITEM NO.	NO. REQD	DESCRIPTION
1	2	3/4" $\phi$ x 8" LG. HILTI KWIK 3 BOLT. PART NO. 282520 (CS)
2	1	P 3/4" x 6" x 13" W/(2) 13/16" $\phi$ HOLES (SEE SECT. A-A) A-36
3	1	Z 4" x 4" x 1/2" x 2'-11" LG. (CUT LG. TO SUIT) A-36
4	1	Z 6" x 4" x 1/2" x 2'-0" LG. A-36
5	2	CC-4 STRAP TYPE "B" W/BP. 4 (30354)

REF. CALC. 267274 D N.P. 57  
 CALC. 267274 D SIM. N.P. 57

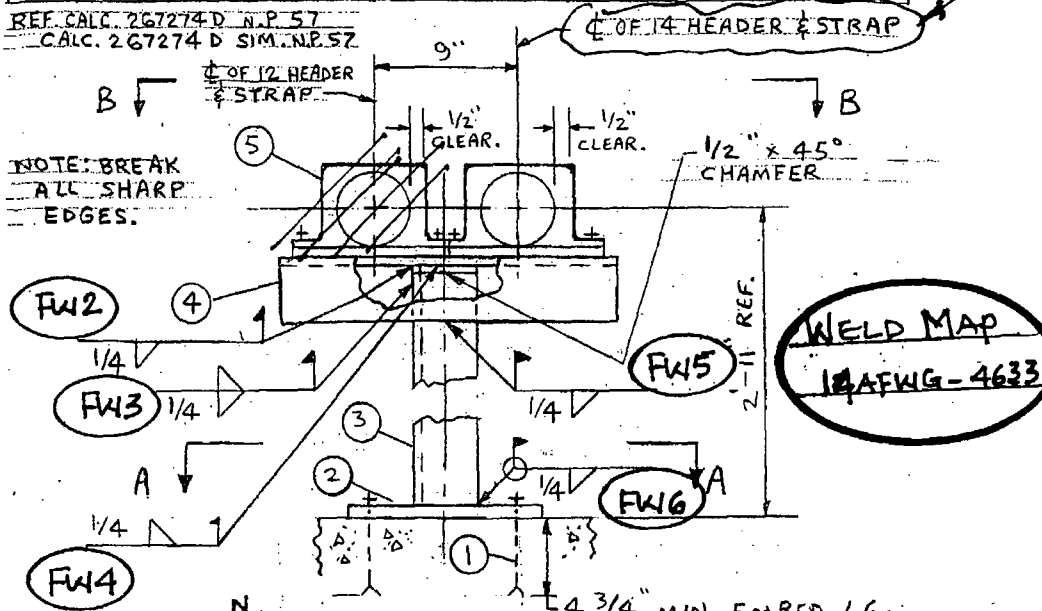


SECTION B-B  
 (ONLY ITEMS 4 & 5  
 SHOWN FOR CLARITY)

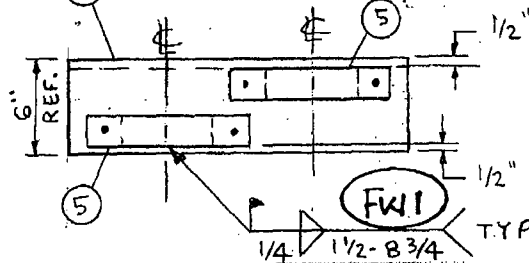
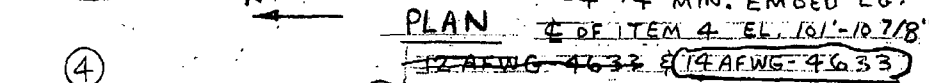
DWG. NO. 226129  
 SHT. 32

ITEM NO.	NO. REQD	DESCRIPTION
1	2	3/4" $\phi$ x 8" LG. HILTI KWIK 3 BOLT PART NO. 282520 (CS)
2	1	# 3/4" x 6" x 13" W/(2) 13/16" $\phi$ HOLES (SEE SECT. A-A) A-36
3	1	Z 4" x 4" x 1/2" x 2'-11" LG. (CUT LG. TO SUIT) A-36
4	1	Z 6" x 4" x 1/2" x 2'-0" LG. A-36
5	2	CC-4 STRAP TYPE "B" W/BP. 4 (30354)

REF. CALC. 267274 D N.P. 57  
 CALC. 267274 D SIM. N.P. 57

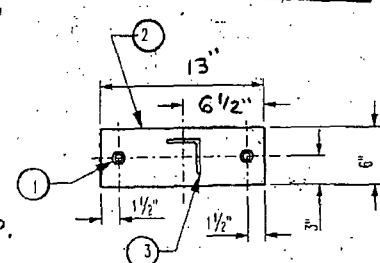


**WELD MAP**  
 12AFWG-4633



SECTION B-B

(ONLY ITEMS 4 & 5 SHOWN FOR CLARITY)



SECTION A-A

DWG. NO. 226129  
 SHT. 32