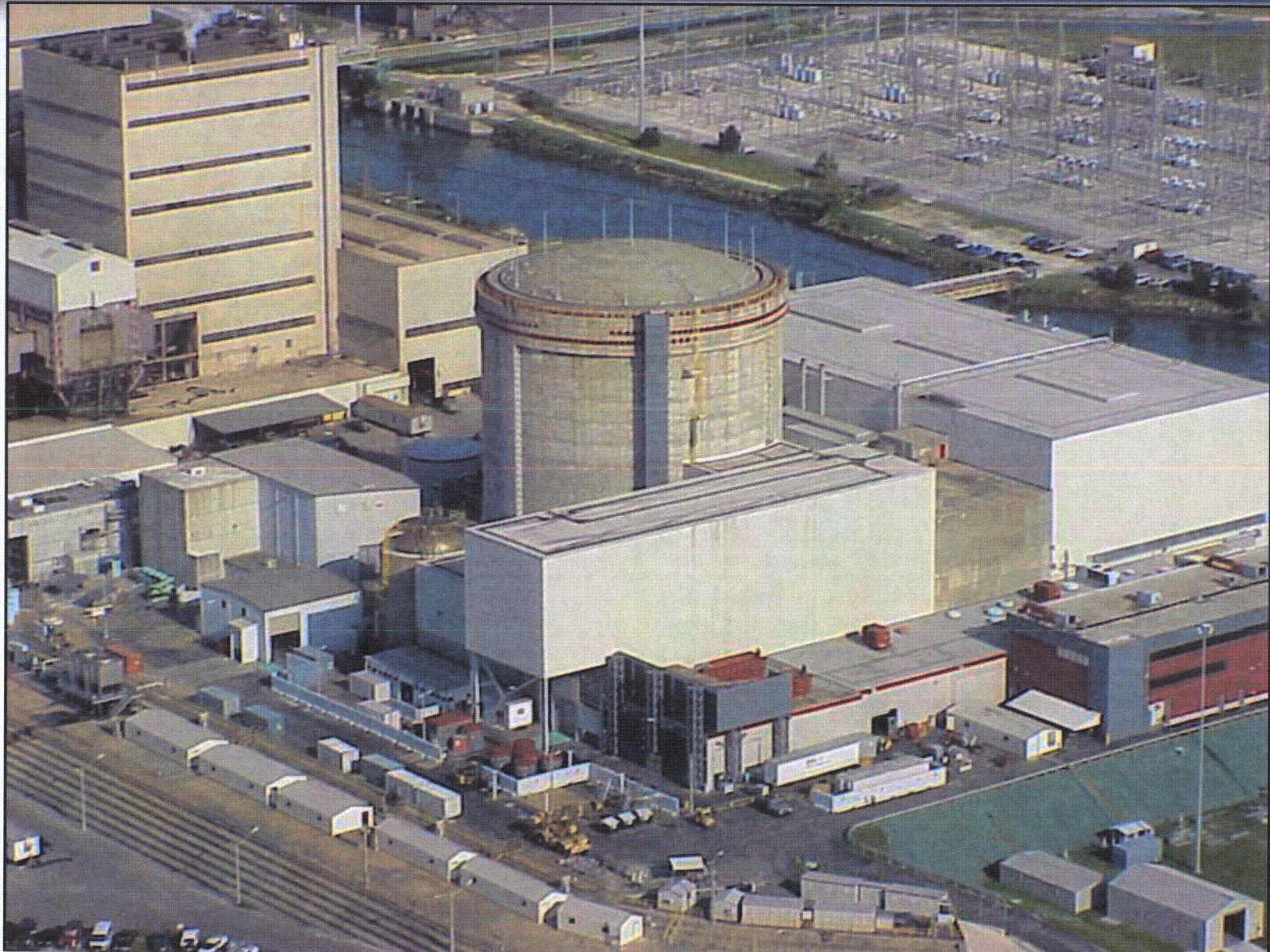


Crystal River Unit #3 Containment Delamination Investigation

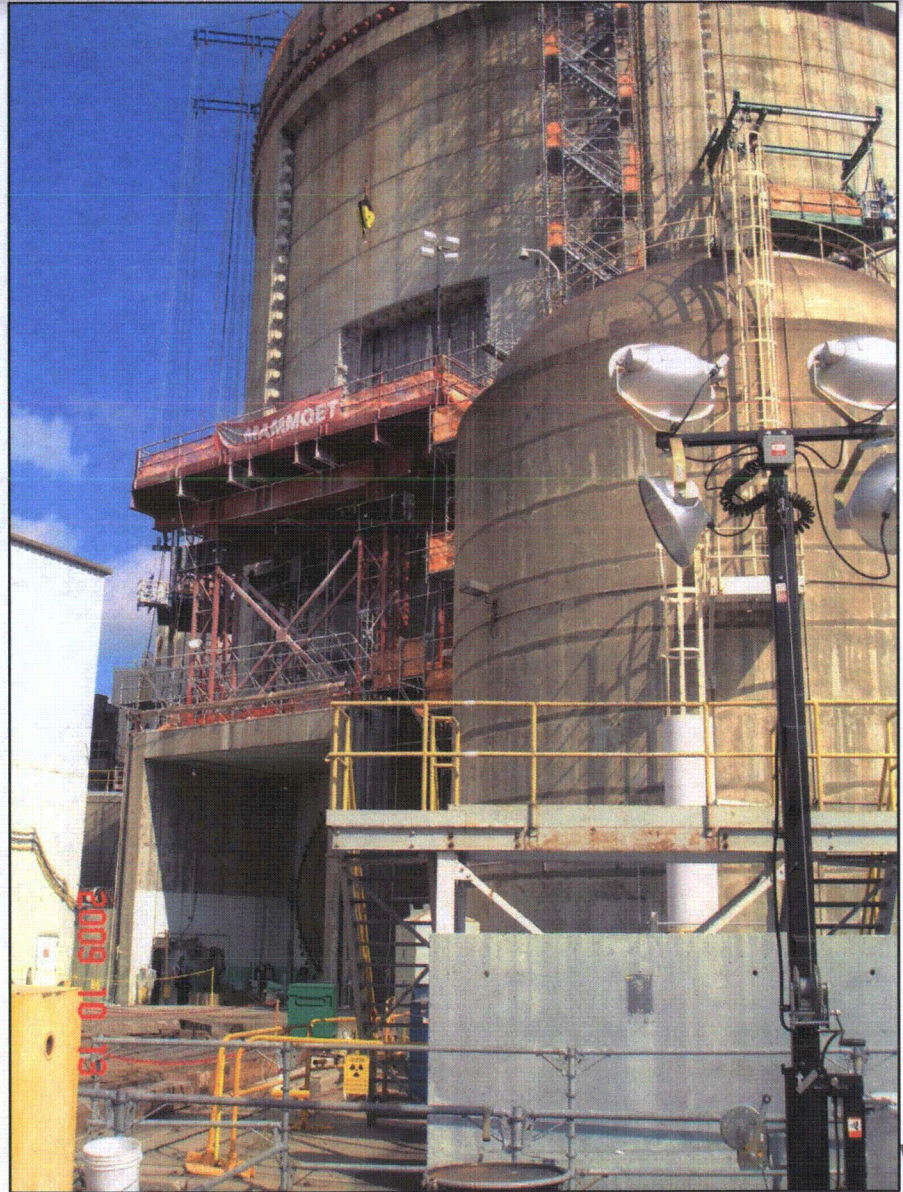
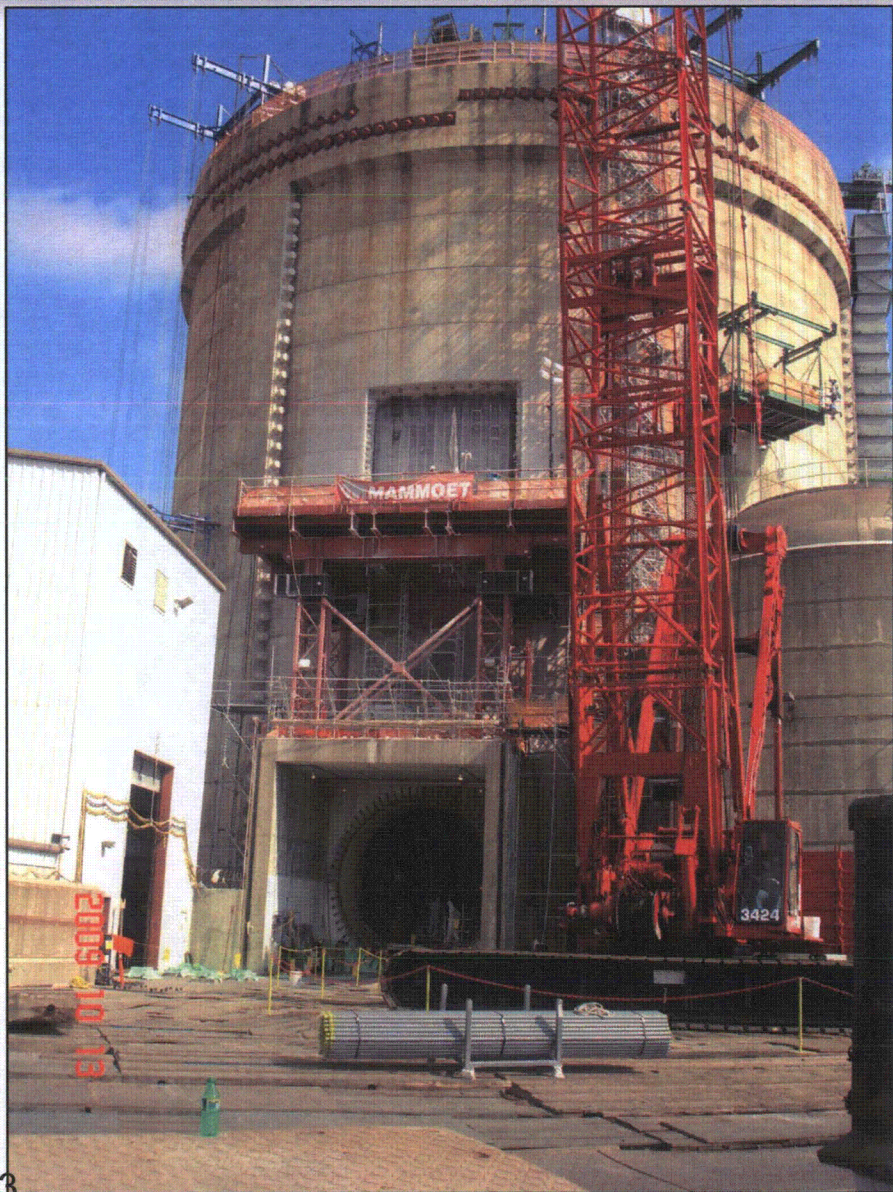


07/08

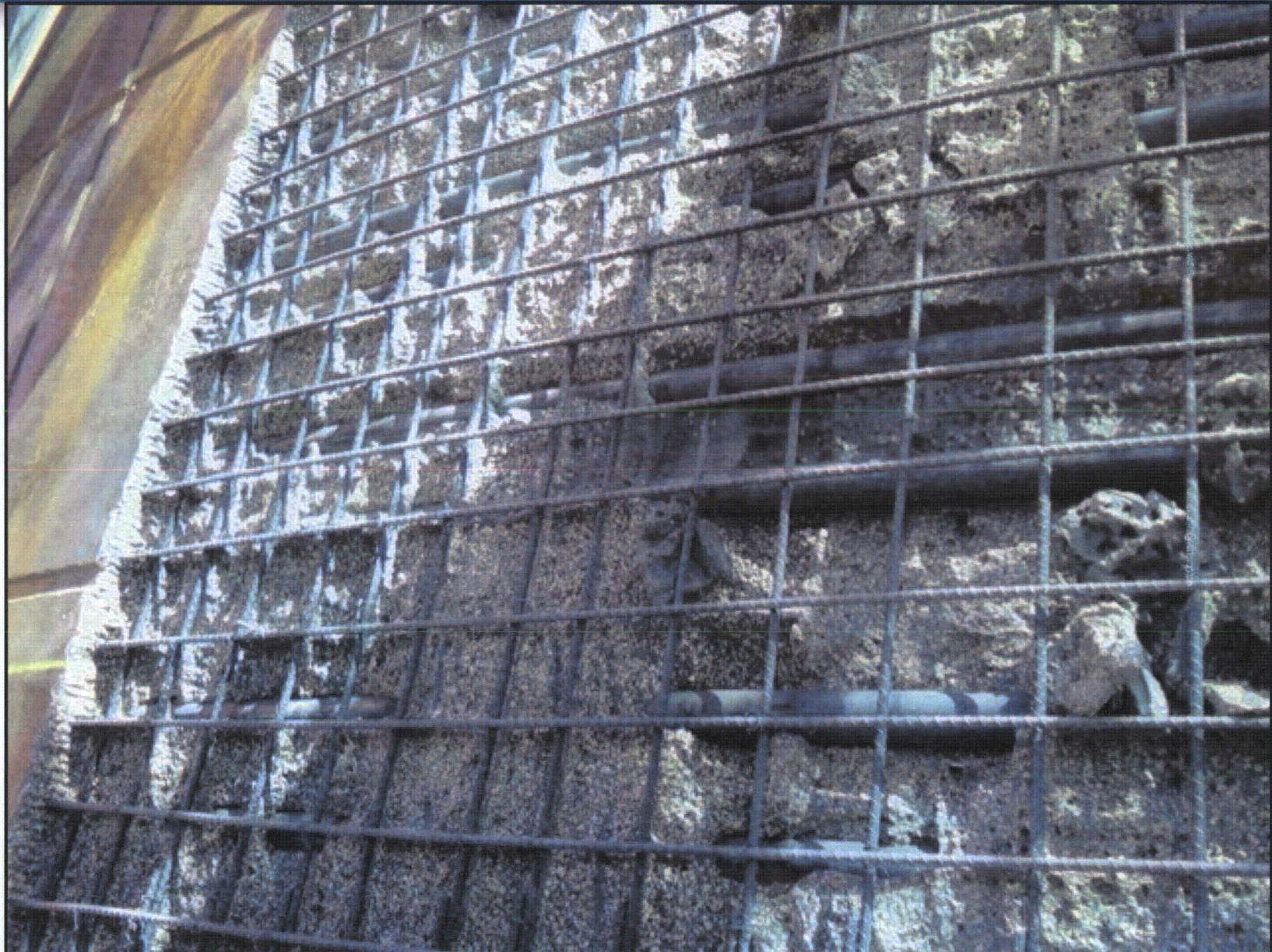
Crystal River #3 Aerial View



Construction Opening (between Buttresses 3 and 4)



Construction Opening Removal Sequence



Construction Opening Removal Sequence (cont)



Construction Opening Removal Sequence (cont)



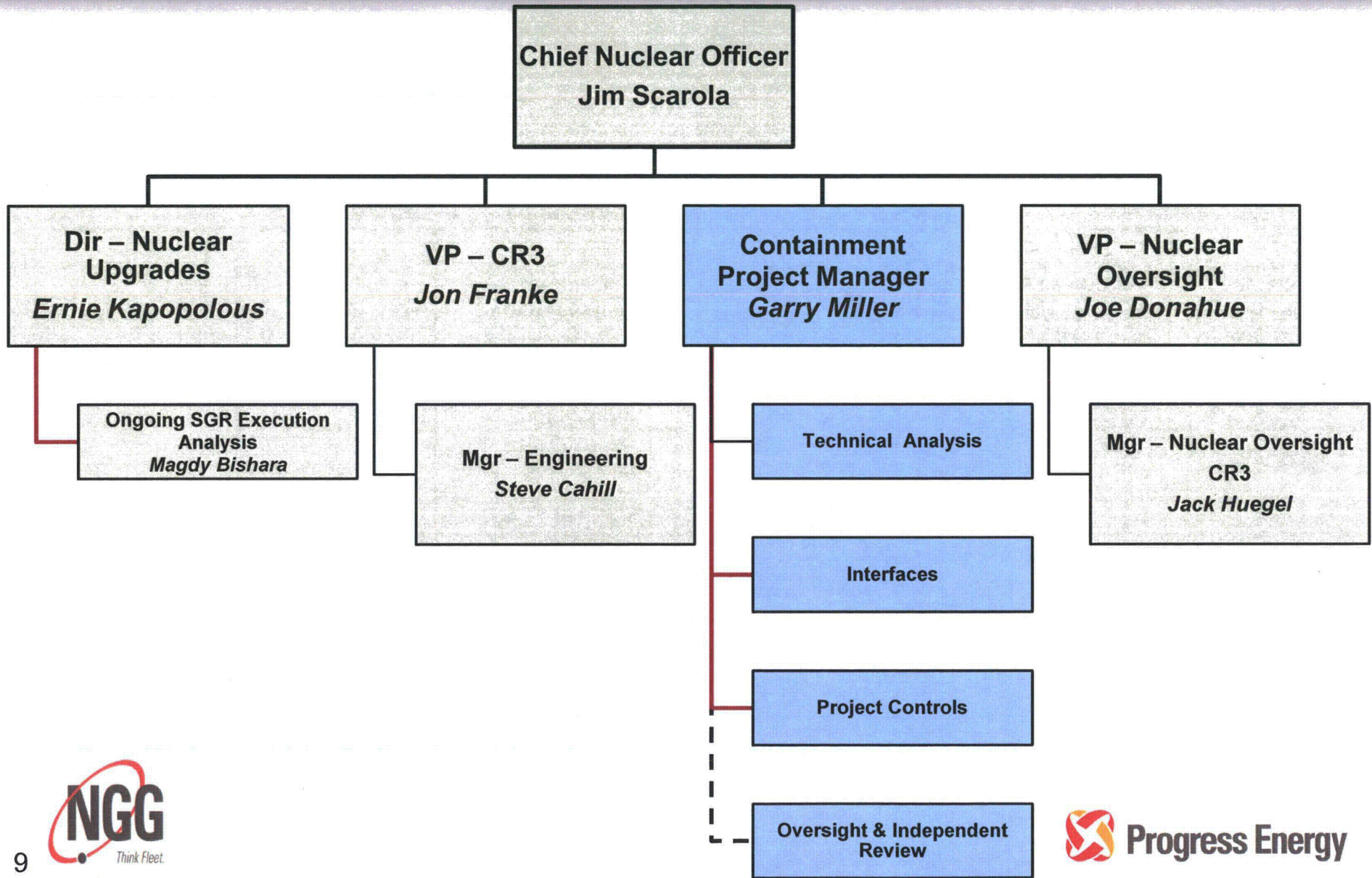
Construction Opening Removal Sequence (cont)



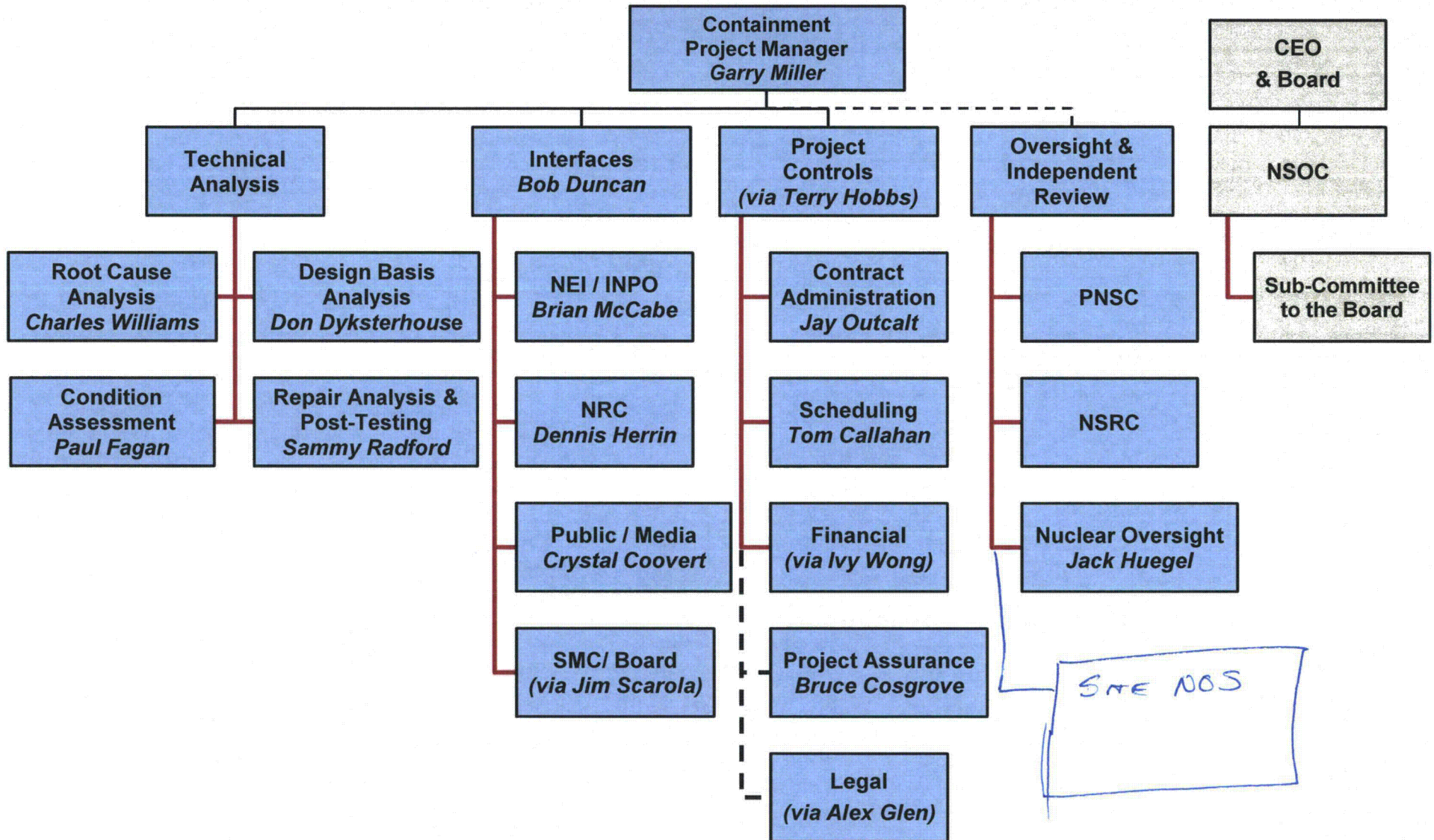
Construction Opening Removal Sequence (cont)



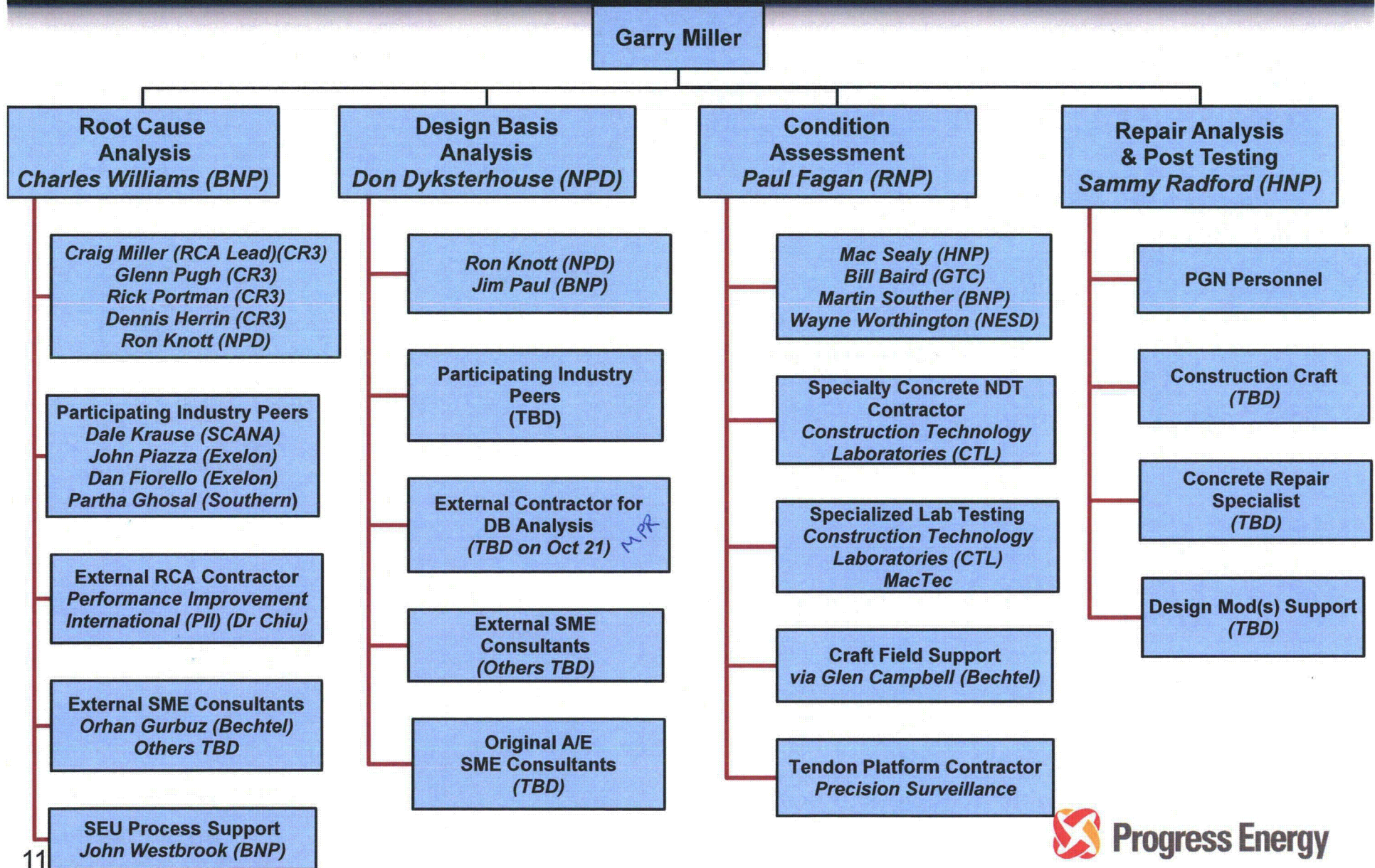
Organization – Reporting View



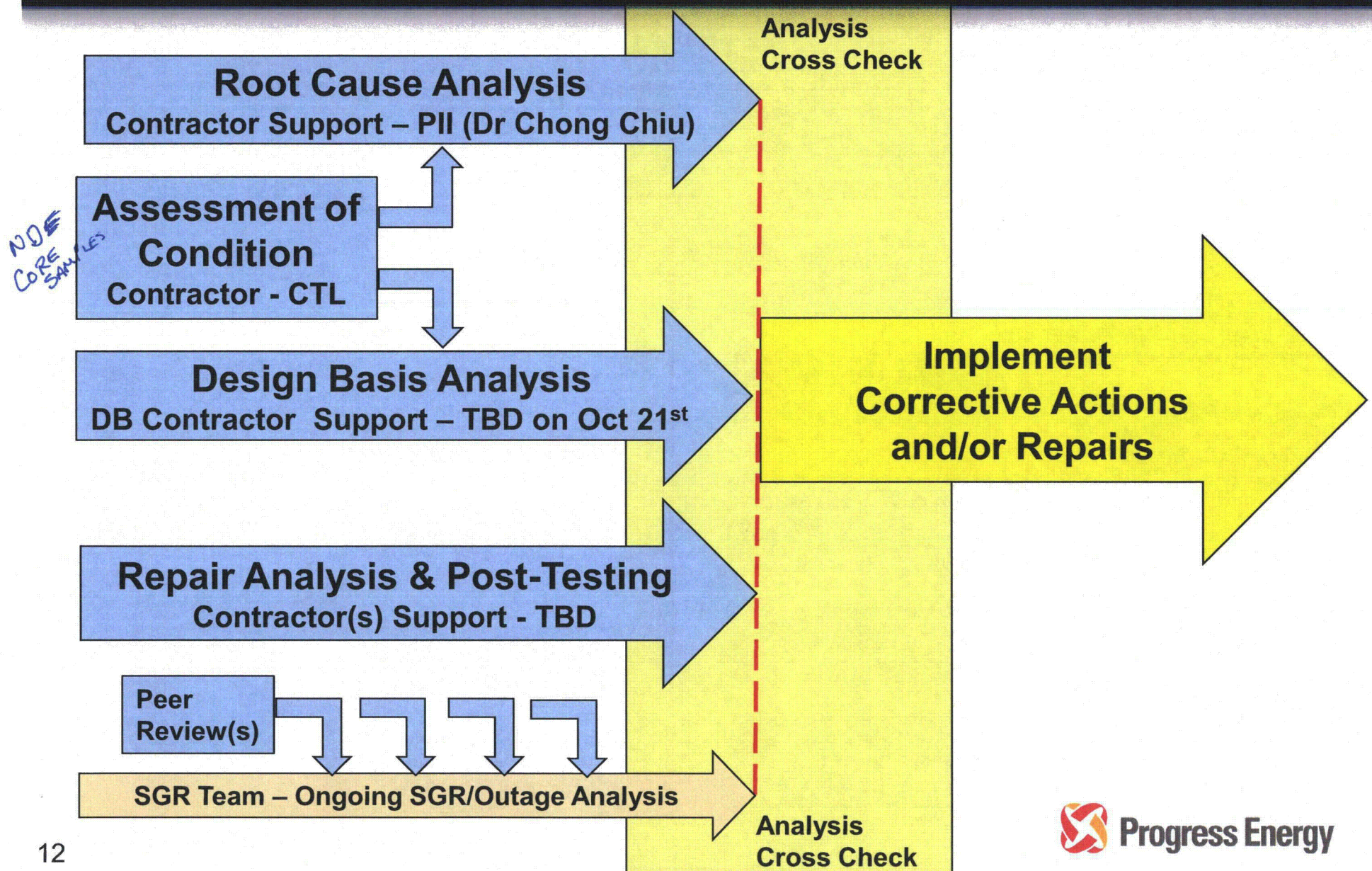
Organization – Functional View



Organization – Technical Structure Details



Project Work Flow Summary



Technical Approach Details

- **Root Cause Analysis Team (draft RCA ~ mid-Nov)**
 - Performance Improvement International (PII) (Dr Chong Chiu)
 - Includes specialized RCA analysis to facilitate support/refute
 - Historical data gathering supported by PGN personnel
 - Ongoing Field data from Condition Assessment Team
 - Expedite identification of most likely causes (target ~ 1 week)
- **Condition Assessment Team (~ 2 weeks)**
 - Construction Technology Laboratories (CTL) for Non-Destructive Testing
 - Impact Echo and Impulse Response techniques
 - Backed up by core bore samples & boroscopic inspection
 - CTL & MacTec for Petrographic Analysis
 - Containment external visual inspection (IWL process)
 - Activities governed by Test Procedure(s)

Technical Approach Details (cont)

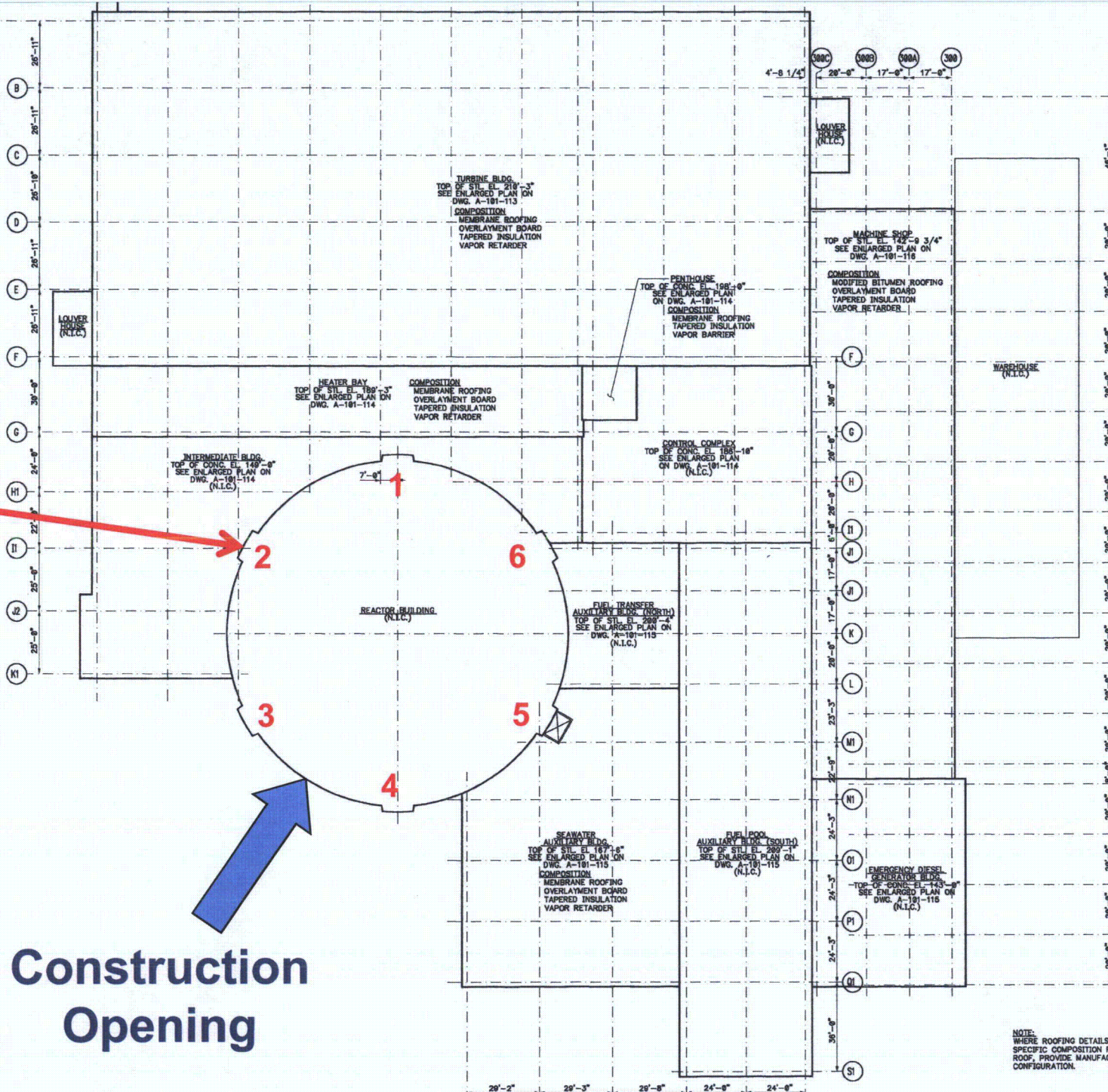
- **Design Basis Analysis Team (~ 3 to 4 weeks)**
 - Contractor Support for DBA Modeling - RFP Responses Received Oct 20, Decision on Oct 21
 - Support Past-Operability Analysis
 - Analysis Supporting Acceptability of Proposed Repair Options



- **Repair Team (repair duration TBD)** *Example - Maxi-Bolt Undercut Anchor System*
 - Investigating Repair Alternatives for Delaminated Areas
 - Evaluating Bar Anchorage Options and Grout/Epoxy Options
 - Evaluating Constructability & Duration
 - May Affect Construction Opening Restoration
 - May Require Design Change(s) to existing EC
 - RCA and DBA Completion Tentatively Restrains Restoration Timing

Plan View

Buttress #
(typical)



Source Drawing:
101-112 SH000

Construction
Opening

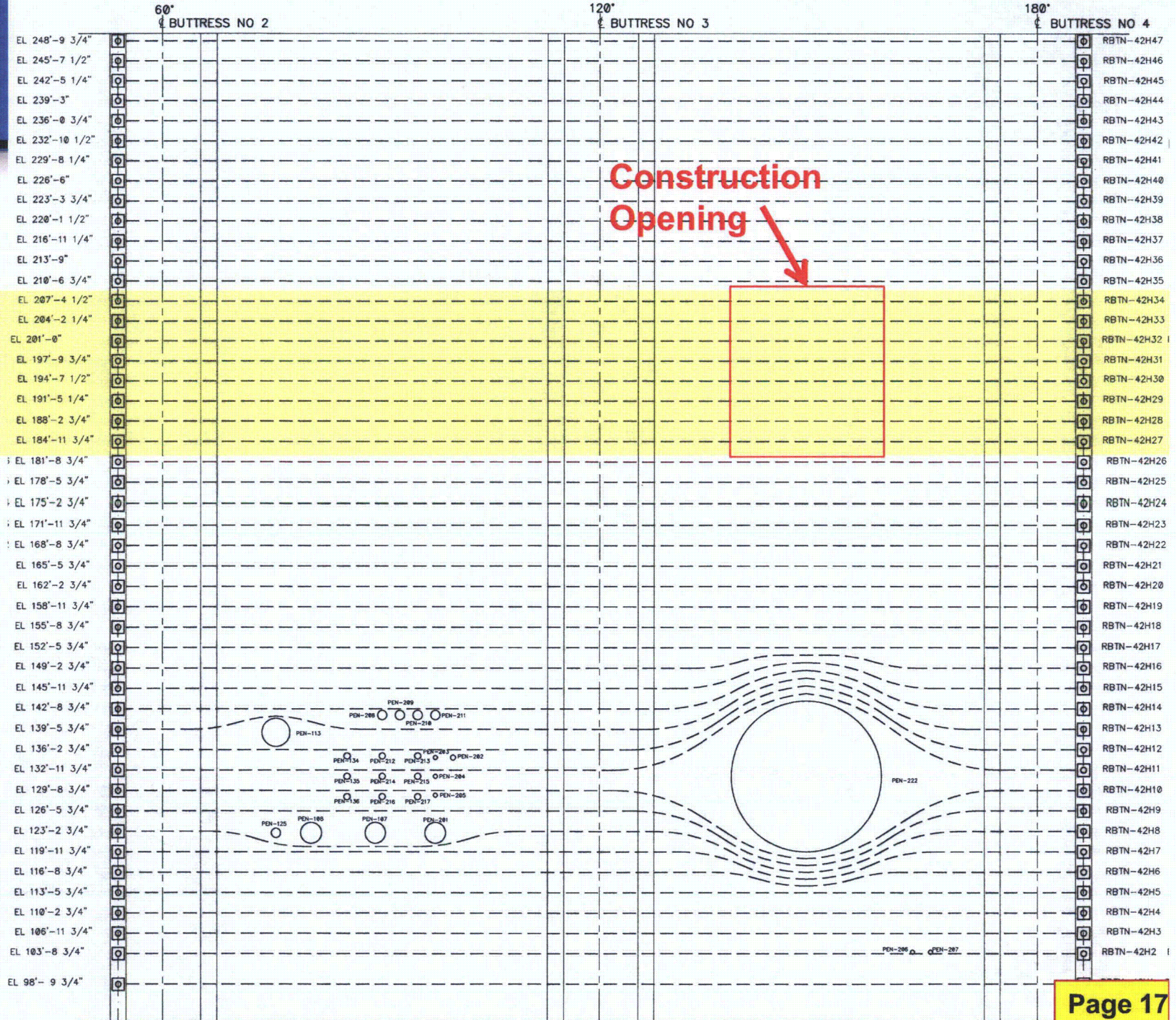
NOTE:
WHERE ROOFING DETAILS
SPECIFIC COMPOSITION F
ROOF, PROVIDE MANUFAC
CONFIGURATION.

Back-Up Graphic Slides

Horizontal Tendons Buttress 2 - 4

**Tendons
Removed**

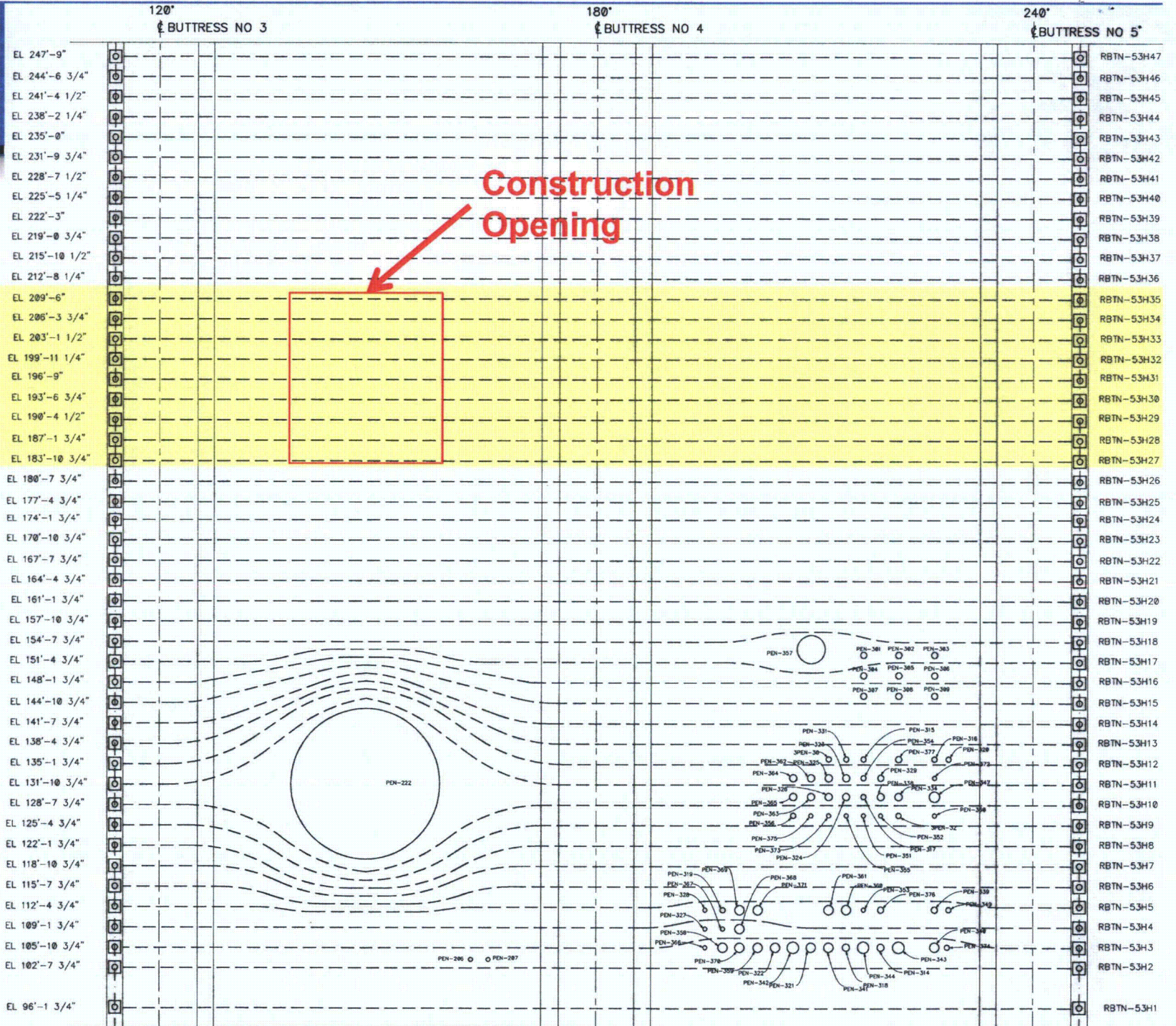
Source Drawing:
0425-006 SH001
- SH 000



Horizontal Tendons Buttress 3 - 5

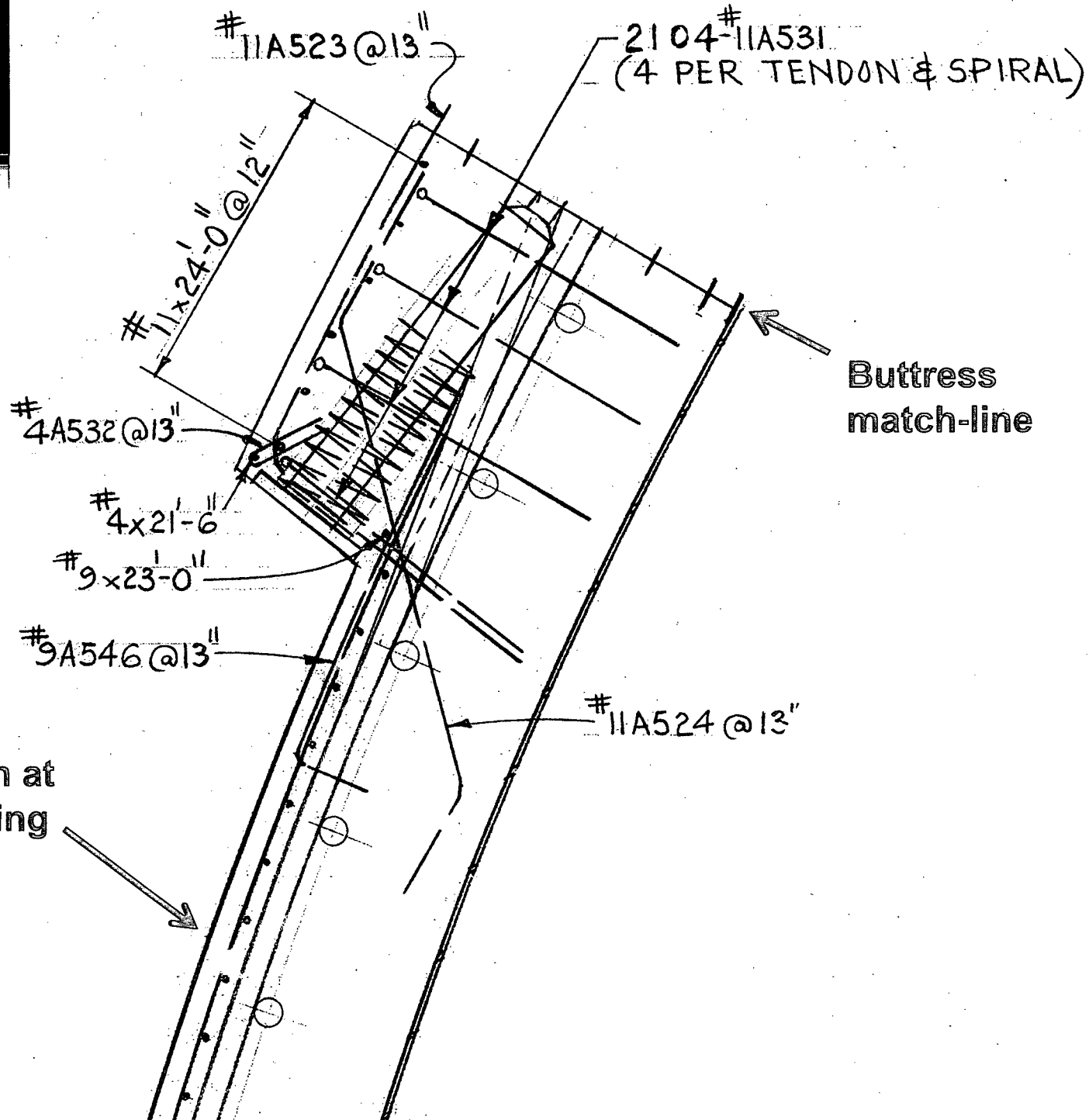
**Tendons
Removed**

Source Drawing:
0425-007 SH001
- SH 000



- RBTN-53H47
- RBTN-53H46
- RBTN-53H45
- RBTN-53H44
- RBTN-53H43
- RBTN-53H42
- RBTN-53H41
- RBTN-53H40
- RBTN-53H39
- RBTN-53H38
- RBTN-53H37
- RBTN-53H36
- RBTN-53H35
- RBTN-53H34
- RBTN-53H33
- RBTN-53H32
- RBTN-53H31
- RBTN-53H30
- RBTN-53H29
- RBTN-53H28
- RBTN-53H27
- RBTN-53H26
- RBTN-53H25
- RBTN-53H24
- RBTN-53H23
- RBTN-53H22
- RBTN-53H21
- RBTN-53H20
- RBTN-53H19
- RBTN-53H18
- RBTN-53H17
- RBTN-53H16
- RBTN-53H15
- RBTN-53H14
- RBTN-53H13
- RBTN-53H12
- RBTN-53H11
- RBTN-53H10
- RBTN-53H9
- RBTN-53H8
- RBTN-53H7
- RBTN-53H6
- RBTN-53H5
- RBTN-53H4
- RBTN-53H3
- RBTN-53H2
- RBTN-53H1

Buttress Cutaway

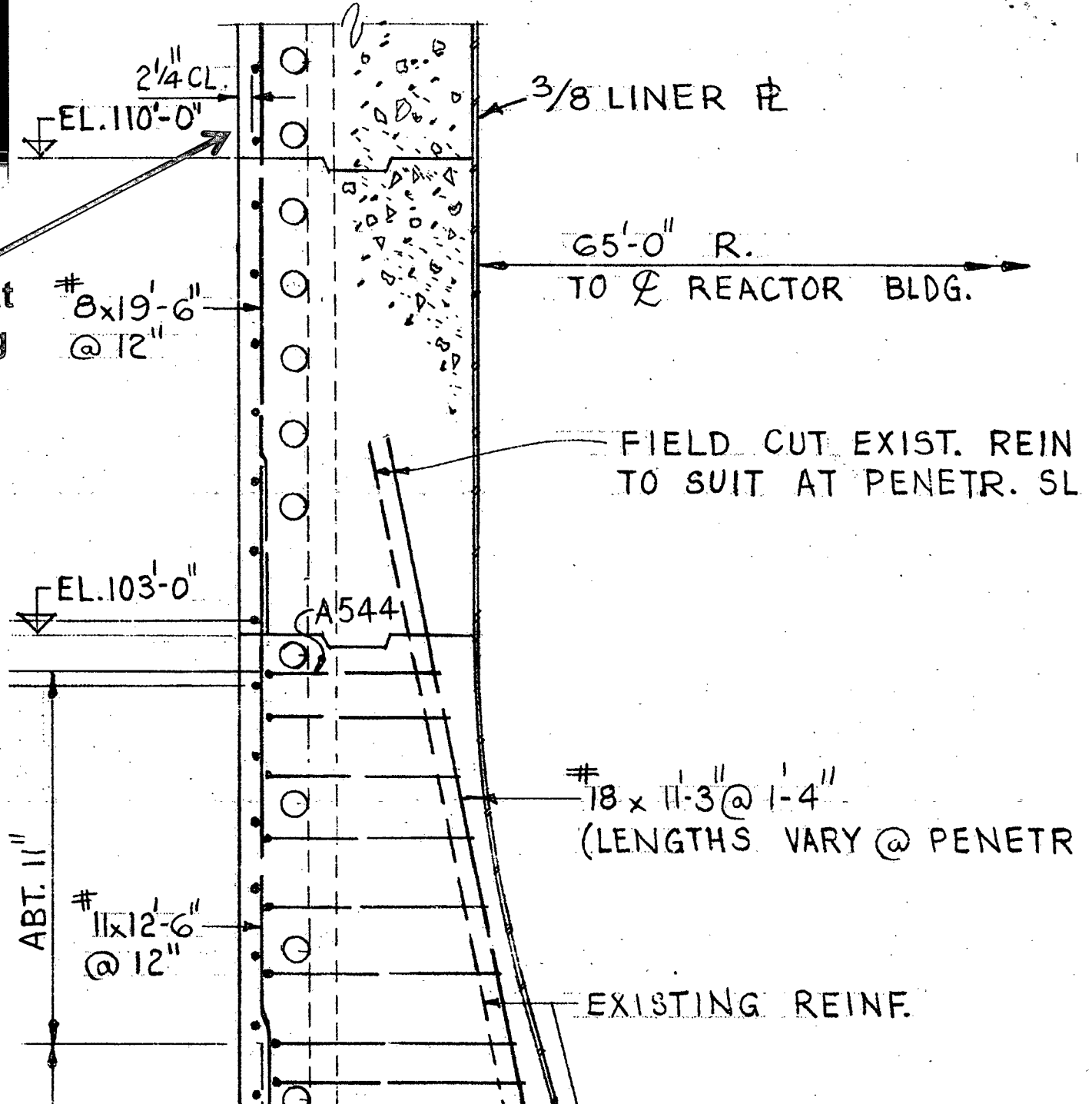


Typical Wall Section at
Construction Opening
(Plan View)

Source Drawing:
425-033 SH000

Wall Section Cutaway

Typical Wall Section at
Construction Opening



Source Drawing:
425-033 SH000

