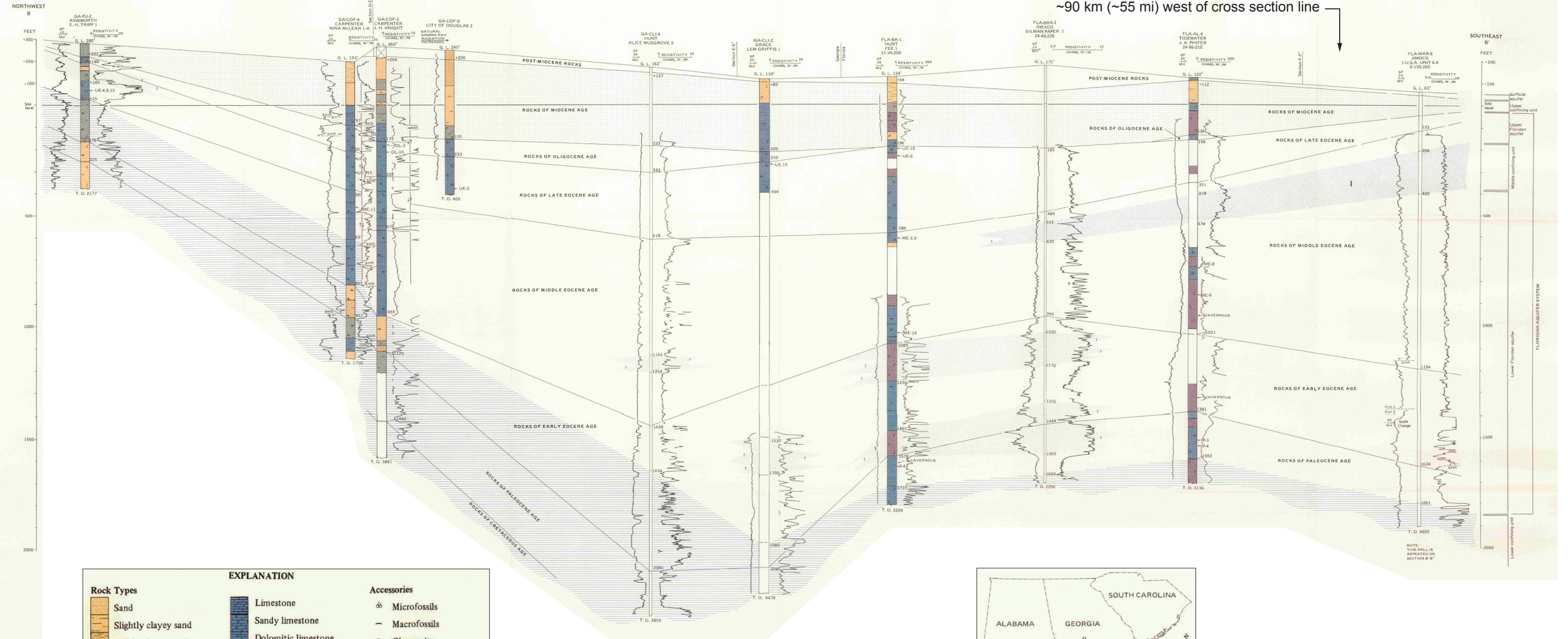


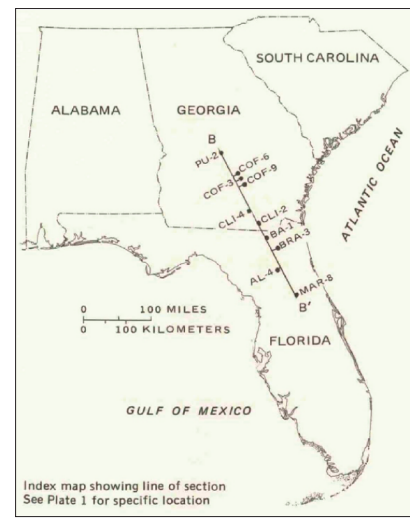
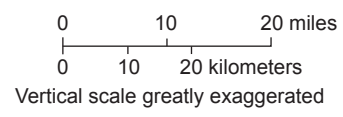
UNITED STATES DEPARTMENT OF THE INTERIOR
GEOLOGICAL SURVEY

Projected location of LNP site:
~90 km (~55 mi) west of cross section line

PROFESSIONAL PAPER 1403-B
PLATE 16



EXPLANATION		
Rock Types		Accessories
Sand	Limestone	⊕ Microfossils
Slightly clayey sand	Sandy limestone	- Macrofossils
Highly clayey sand	Dolomitic limestone	⚡ Glauconite
		Ⓟ Phosphate
Calcareous silt	Dolomite	Ⓛ Carbonaceous material
Clay	Sandy dolomite	~ Mica
Sandy clay		△ Chert
	No sample	/ Intergranular gypsum
Hydrologic Units		UE-3 Index fossil occurrence (see table 1)
High-permeability units are unpatterned		
Upper confining unit of the Floridan aquifer system		
Confining unit of subregional extent within the Floridan aquifer system (Roman numerals keyed to text)		
Local confining unit within the Floridan aquifer system		
Lower confining unit of the Floridan aquifer system		



Source: Miller (1986)

Progress Energy Florida
**Levy Nuclear Plant
Units 1 and 2**
Part 2, Final Safety Analysis Report
Geohydrologic Cross Section B-B' from
Pulaski County, Georgia to
Marion County, Florida
Figure 2.5.1-215