

C Organizational Control of Emergencies

This section of the Plan describes the organizations required by the Station during a declared emergency, as well as the organizations required for daily operation.

The Onshift Emergency Response Organization and the designated Emergency Response Organization are activated in case of an emergency. The Onshift Emergency Response Organization is augmented by Emergency Response Organization personnel.

The Onshift Emergency Response Organization has the initial responsibility for declaring the emergency classification, providing timely notification to Federal, State, and County authorities, developing and providing protective action recommendations to the State and County authorities. The emergency duties of the Onshift Response Organization are transferred to the Emergency Response Organization as the emergency response facilities are activated.

The Emergency Response Organization is provided with an adequate roster of available personnel to allow for relief and turnover on a shift basis, if required. Personnel relieving Emergency Response Organization positions will follow guidance contained in their position based procedure.

Figure C-6, describes the Station Emergency Response communications interface with State, County, & Federal Agencies.

C.1 Normal Station Operating Organization

The daily Station operating organization is described in Section 13.1.2 of the Station Final Safety Analysis Reports for Units 1 & 2 and Units 3 & 4. The Plant General Managers report to the Group Vice President for Units 1/2 and 3/4 respectively and, they are responsible for the operation and maintenance of their respective Units. In the absence of the Plant General Manager, responsibility for operation and maintenance is specified in approved Station administrative procedures.

The Emergency Director is responsible for the activation and direction of the Station Emergency Response Organization. He is also responsible for ensuring resources are available to support operation over a protracted period.

C.2 Non-delegable/Delegable Emergency Director Responsibilities:

The non-delegable Emergency Director responsibilities and authorities are:

- *Declaration of emergency classifications;*
- *Approval of offsite protective action recommendations issued to State and County authorities;*
- *Approval of required notifications to State and County;*
- *Approval of planned exposures in excess of Code of Federal Regulations, Title 10, Part 20 limits;*

- *Authorizing the use of Potassium Iodide;*
- *Approval of departures from license conditions per Code of Federal Regulations, Title 10, Part 50.54(x) for emergency response activities NOT related to Control Room Operation actions.*
- *Declaring entry into the Severe Accident Management Guidelines.*

The delegable Emergency Director responsibilities and authorities are:

- *Requesting of Federal assistance through the NRC;*
- *Approval of press releases prior to issuance;*
- *Approval of required notifications to the NRC;*
- *Approval of commitments to the NRC.*

These responsibilities and authorities shall be transferred from the Shift Supervisor, who may initially assume the role of Emergency Director at the onset of the emergency, to the Technical Support Center Manager or the Emergency Operations Facility Director as each assumes responsibilities and authorities of the Emergency Director.

C.3 On-shift Emergency Response Organization

Should an emergency be declared, the Shift Supervisor (Emergency Director) activates the Onshift Emergency Response Organization from the normal operating staff. The individuals constituting the Onshift Emergency Response Organization will assume their respective titles and the responsibilities for their position until relieved as necessary.

The Onshift Emergency Response Organization is composed of members of the Plant Operations staff, the Shift Technical Advisor, Health Physics, Chemistry, Maintenance, Plant Protection, and Emergency Response Teams. The Onshift Emergency Response Organization may be supplemented as needed by the Emergency Director as required by the situation. The onshift complement provides for the capability of 24 hours per day emergency response. Positions for the Onshift Emergency Response Organization are depicted in Figure C-1. The Onshift Emergency Response Organization meets the personnel requirements of NUREG-0654/FEMA-REP-1, Rev. 1, Section B, Table B-1. The duties of the onshift complement, as an initial Emergency Response Organization, are similar to their normal duties, except as described below.

C.3.1 Shift Supervisor

The Shift Supervisor initially assumes the position of Emergency Director until relieved by the Technical Support Center Manager or the Emergency Operations Facility Director. The key responsibilities of the Emergency Director are:

- *Recognize, classify, and declare the emergency condition;*
- *Completing notifications and making protective action recommendations to offsite agencies;*
- *Directing onsite emergency response activities, monitoring plant conditions for changes in Emergency Action Levels and emergency classifications, and directing Control Room response to mitigate the emergency condition.*
- *Once the Emergency Director responsibilities and authorities are assumed by the Technical Support Center Manager or Emergency Operations Facility Director, the Shift Supervisor remains in the Control Room, but reports to the Operations Manager.*

C.3.2 Acting Radiological Manager

An onshift senior radiological protection technician shall assume the position of Acting Radiological Manager until relieved by the Radiological Manager in the Technical Support Center. The Acting Radiological Manager reports via telephone to the Emergency Director in the Control Room at an Unusual Event and assists with the activation of the Operations Support Center at an Alert or higher emergency classification. The key responsibilities of the Acting Radiological Manager are:

- *Assessing Station radiological and environmental conditions;*
- *Responding to radiological problems;*
- *Identifying special radiological protective measures;*
- *Determining special Radiation Work Permit requirements;*
- *Verifying emergency classification if based on radiological Emergency Action Levels;*
- *Reviewing and recommending emergency exposures to emergency response personnel in excess of Code of Federal Regulations, Title 10, Part 20 limits;*
- *Ensuring adequate inventories of radiological supplies, equipment, and Radiation Protection personnel are available.*
- *Providing prompt dose projection when requested.*

During an Alert or higher emergency classification, the Acting Radiological Manager, after being relieved of responsibility and authority by the Radiological Manager in the Technical Support Center, assumes the responsibilities of the Assistant Radiological Coordinator in the Operations Support Center.

C.3.3 Acting Security Manager

The onshift Security Force Supervisor assumes the position of Acting Security Manager until relieved by the Security Manager in the Technical Support Center. The

Acting Security Manager reports via telephone to the Emergency Director in the Control Room at an Unusual Event or higher emergency classification. The key responsibilities of the Acting Security Manager are:

- *Directing the implementation of Security emergency response activities as specified in the Station Safeguards Security Plan;*
- *Activating the Emergency Notification and Response System;*
- *Implementing assembly and accountability efforts;*
- *Establishing special access controls;*
- *Providing for the expedient entry and exit of emergency vehicles;*
- *Directing changes to security operations based on radiological conditions.*

During an Alert or higher emergency classification, the onshift Security Force Supervisor, after being relieved of Acting Security Manager responsibility and authority by the Security Manager in the Technical Support Center, returns to the responsibilities of the Security Force Supervisor.

C.3.4 Acting Operations Support Center Coordinator

The onshift Duty Maintenance Supervisor assumes the position of Acting Operations Support Center Coordinator (0ERP01-ZV-SHO4) until relieved by the Operations Support Center Coordinator. The Acting Operations Support Center Coordinator reports via telephone to the Emergency Director in the Control Room at an Unusual Event. The key responsibilities of the Acting Operations Support Center Coordinator are:

- *Providing ongoing maintenance support to activities assigned by the Emergency Director;*
- *Ensuring that emergency team activities are performed in accordance with approved procedures and policy;*
- *Ensuring that deviations from Station procedures and NRC regulations are approved by the Emergency Director;*
- *Establishing and staffing the Operations Support Center with onshift personnel to support plant emergency response activities, if requested by the Emergency Director;*
- *Ensuring that emergency teams formed and dispatched are properly briefed and status monitored;*
- *May fulfill Radiological Protection (double asterisk) functions from Table C-1, (Access Control, Dosimetry Issue, Personnel Monitoring, and Search & Rescue).*

Alert or higher emergency classification, the onshift Duty Maintenance Supervisor, after being relieved of Acting Operations Support Center Coordinator responsibility, supports the Operations Support Center, as required.

C.3.5 Shift Technical Advisor

The Shift Technical Advisor (one per Reactor Type) has the primary responsibility to assist the Emergency Director in the mitigation of accident consequences. The Shift Technical Advisor is available to Control Room personnel 24 hours per day when either of the four units is above cold shutdown and is capable of being in the Control Room within ten (10) minutes or less after being notified.

C.3.6 ENS Communicator

The onsite ENS Communicator reports to the Control Room at an Unusual Event or higher emergency classification and initiates communications with the Nuclear Regulatory Commission.

Duties may be performed by the following:

- *Personnel currently or previously licensed by NRC,*
- *SRO Management Certified Personnel.*

C.3.7 Plant Operators

The onshift Plant Operations personnel (Licensed and Non-Licensed) are responsible for:

- *Operations of all reactor-related equipment;*
- *Coordination of activities affecting Station structures, systems and components;*
- *Equipment clearances;*
- *Activation of fire brigade and emergency medical teams;*
- *Identification of emergency classifications;*
- *Initiating notification of the Emergency Response Organization.*

A Plant Operator is assigned to report to the affected unit's control room upon any declaration of the Emergency Plan to act as the State/County Communicator. The State/County Communicator is not required to perform plant operator duties while filling this position. The Staffing identified in Table C-1 is provided to support Emergency Plan and plant operation response requirements. Those Plant Operators not assigned onshift duties in the operation of the units by the Emergency Director report to the Operations Support Center at an Alert or higher emergency classification. The Emergency Director can utilize the Plant Operators via the Acting Operations Support Center Coordinator.

C.3.8 Onshift Chemistry Technician

Onshift Chemistry Technicians are responsible for post accident sampling and analysis. Chemistry personnel report to the Operations Support Center at an Alert or higher emergency classification unless otherwise directed.

- *May fulfill Radiological Protection (double asterisk) functions from Table C-1, (RP Coverage for Corrective Actions).*

C.3.9 Onshift Maintenance

The onshift Maintenance personnel report to the Operations Support Center at an Alert or higher emergency classification or at an Unusual Event if the Acting Operations Support Center Coordinator begins activating the Operations Support Center.

C.3.10 Plant Protection

Onshift Plant Protection personnel remain at their duty stations in accordance with the Security Plan, unless otherwise directed. Onshift Plant Protection personnel initiate notification of the Emergency Response Organization.

- *Plant Protection or other suitably qualified individuals will function as the On-site Communicator in the Control Room.*

C.3.11 Emergency Response Teams

Emergency Response Teams typically consist of personnel who have been trained in the procedures and practices that describe the performance of their duties as Emergency Team members or leaders. As required by the emergency conditions, the Operations Support Center Coordinator may temporarily assign other plant personnel to the Emergency Teams to assist the regular team members during an emergency.

C.4 Emergency Response Organization

Those members of the Emergency Response Organization who are not on site at the time of the emergency shall be able to augment the Onshift Response Organization within 60 and 75 minutes of being notified as specified in Table C-1 to provide manning levels recommended in NUREG-0654.

The Technical Support Center and Operations Support Center Station Emergency Response Organization are activated at an Alert emergency classification or earlier if directed by the Emergency Director. Positions for these facilities are depicted in Figure C-2 & Figure C-3. The Emergency Operations Facility and Joint Information Center are staffed at the Alert and may be activated at the discretion of the Emergency Director. Positions for these facilities are depicted in Figure C-4 & Figure C-5. The Emergency Operations Facility and Joint Information Center shall be activated at a Site Area Emergency. The Emergency Operations Facility dose projection capability is activated at an Alert classification. If during an Unusual Event the trending of plant conditions indicates the need for additional support, the Emergency Director can activate all or part of the Station Emergency Response Organization to report to the Technical Support Center, Emergency Operations Facility, Joint Information Center or

Operations Support Center. The process to maintain a fully staffed Emergency Response Organization is described in OPGP05-ZV-0003, Emergency Response Organization.

Modifications to the Emergency Response Organization may be made by the Emergency Director as required by the complexity of the emergency.

The following key Emergency Response Organization positions report to the Technical Support Center, the Operations Support Center, and the Emergency Operations Facility, and are added to the Onshift Response Organization during the declaration and mitigation of an Alert, Site Area Emergency or General Emergency. These positions can be activated by the Emergency Director at an Unusual Event emergency classification.

C.4.1 Technical Support Center Manager

The Technical Support Center Manager reports to the Technical Support Center at an Alert or higher and provides guidance and advice to the Control Room on plant design and coordinating engineering activities in the areas of analysis, design modifications, system response, and offsite protective action recommendations. The Technical Support Center Manager may assume the position of Emergency Director from the Shift Supervisor.

C.4.2 Operations Manager

The Operations Manager reports to the affected Unit's Control Room and directs the implementation of Control Room emergency response activities.

C.4.3 Radiological Manager

The Radiological Manager reports to the Technical Support Center and is responsible for assessing Station radiological and environmental conditions and implementing special radiological protective measures.

C.4.4 Maintenance Manager

The Maintenance Manager reports to the Technical Support Center and is responsible for functioning as the Technical Support Center interface for all repair team activities requested of the Operations Support Center. The Maintenance Manager ensures that supplies, equipment and manpower to support repair efforts are available and coordinates with the other Technical Support Center Managers to establish repair team priorities.

C.4.5 Technical Manager

The Technical Manager reports to the Technical Support Center and is responsible for monitoring the status of plant systems including the three fission product barriers (Fuel Cladding, Reactor Coolant System, and Containment) and identifying potential failures of key systems.

C.4.6 Security Manager

The Security Manager reports to the Technical Support Center and is responsible for directing implementation of onsite security response activities, performing assembly and accountability, and assisting with Protected Area and Owner Controlled Area evacuation.

C.4.7 Administrative Manager

The Administrative Manager reports to the Technical Support Center and is responsible for ensuring necessary documents are available, maintaining an overall file of records generated during the emergency, and ensuring adequate supplies are available in the Technical Support Center.

C.4.8 Operations Support Center Coordinator

The Operations Support Center Coordinator reports to the Operations Support Center at an Alert or higher and assumes responsibility for Operations Support Center activities and ensures accountability of the Operations Support Center is maintained. The Operations Support Center Coordinator ensures that emergency teams formed and dispatched are properly briefed and their status monitored, resources and personnel to perform Operations Support Center activities are adequate, and adequate communications and information flow is maintained with the Technical Support Center. The Operations Support Center Coordinator ensures that deviations from Station procedures and NRC regulations are approved by the Emergency Director.

C.4.9 Emergency Operations Facility Director

The Emergency Operations Facility Director reports to the Emergency Operations Facility at an Alert. At the discretion of the Emergency Director, the Emergency Operations Facility Director may activate the Emergency Operations Facility at the Alert classification. Following activation, at the discretion of the Emergency Director, the Emergency Operations Facility Director may assume Emergency Director authority and responsibilities from either the Technical Support Center Manager or Shift Supervisor, as appropriate. The Emergency Operations Facility Director is responsible for ensuring that an ongoing effective interface is maintained with County, State, and Federal response agencies, functioning as the primary interface with the Station Owners, and functioning as the primary interface with the Executive Officers of the Owners. The Emergency Operations Facility Director ensures a timely response to inquiries and requests for information from financial, legislative and congressional organizations, and approves major expenditures of funds. The Emergency Operations Facility Director may participate in press briefings at the Joint Information Center, if necessary.

C.4.10 Radiological Director

The Radiological Director reports to the Emergency Operations Facility at an Alert and is responsible for assessing offsite radiological and environmental conditions that may impact the public. The Radiological Director directs offsite dose projection activities and advises the Emergency Director on offsite protective action recommendations for

the public. The Radiological Director directs Offsite Field Team activities and environmental sampling support. The Radiological Director coordinates with the Technical Director to determine offsite protective action recommendations based on the status of the fission product barriers and the potential for a radiological release, and monitors radiological parameters which relate to Emergency Action Levels to determine if conditions warrant a change in emergency classification. The Radiological Director reviews and recommends approval of emergency exposures to Emergency Response Organization personnel in excess of Code of Federal Regulations, Title 10, Part 20 limits, determines Emergency Operations Facility radiological habitability, and recommends to the Emergency Director the issuance of Potassium Iodide. The Radiological Director functions as the primary interface with the Department of State Health Services personnel assigned to the Emergency Operations Facility, and manages radioactive waste and radiological control aspects of the Recovery operations.

C.4.11 Technical Director

The Technical Director reports to the Emergency Operations Facility at an Alert and is responsible for coordinating evaluation of plant safety systems and the condition of the primary fission product barriers, and advising the Emergency Operations Facility Director on engineering issues. The Technical Director also monitors the Emergency Action Levels to determine when changes in the emergency classification may be necessary, and coordinates with the Radiological Director to determine offsite protective action recommendations based on plant status and the potential for a radiological release. The Technical Director obtains engineering information requested by Emergency Operations Facility personnel, provides technical assistance to the Technical Support Center, and independently evaluates Technical Support Center engineering activities to determine if the correct engineering priorities are established. The Technical Director assists in coordinating arrangements for obtaining contract-engineering support.

C.4.12 Support Organization Director

The Support Organization Director reports to the Emergency Operations Facility at an Alert and is responsible for coordinating the interaction with offsite agencies and support organizations, ensuring communications systems are maintained operable and additional communications are provided as necessary, and arranges for special assistance to South Texas Project Electric Generating Station employees and their families with special needs during an emergency. The Support Organization Director ensures adequate and timely information is provided to offsite agencies, and ensures arrangements are in place to process support personnel to meet training, security, and radiological requirements. The Support Organization Director coordinates and maintains a status of South Texas Project Electric Generating Station support requested by County, State, and Federal agencies.

C.4.13 Licensing Director

The Licensing Director reports to the Emergency Operations Facility at an Alert and monitors the open line between the Control Room and NRC and provides information to the NRC regarding Emergency Operations Facility activities. The Licensing Director

functions as the primary liaison with NRC personnel responding to the emergency, and ensures administrative and logistics support is provided to the NRC.

C.4.14 Joint Information Center Director

The Joint Information Center Director reports to the Joint Information Center at an Alert and is responsible for overall JIC management of activation and operation. Provides information to the public of onsite status and conditions. Provides rumor control and public inquiry information. Ensures timely and accurate information is disseminated to the media. Coordinates media tours of emergency facilities.

Discuss plant status with offsite agency Public Information Officers (PIO) located at the JIC as well as the Governor's Division of Emergency Management PIO in Austin when possible. Schedules interviews with the media as needed. Corrects misinformation/ rumors during press briefings and ensures updated news release transmittals.

C.4.15 Company Spokesperson

The Company Spokesperson reports to the Joint Information Center at an Alert and is responsible for providing South Texas Project information to the news media. Also approves press releases and maintains contact with the Site Public Affairs Coordinator. Meets with offsite agency Public Information Officers (PIO) prior to news briefings. Designates personnel to make public comment on the emergency. Schedules frequent news conferences in order to apprise media of current information.

C.4.16 Media Relations Manager

The Media Relations Manager reports to the Joint Information Center at an Alert and is responsible for the timely accurate flow of information to the media, coordinates schedules and announces the press briefings and conferences, responds to media inquiries for information, arranges interviews, responds to media telephone inquiries, coordinates tours to other emergency response facilities as directed.

C.4.17 Public Inquiry Manager

The Public Inquiry Manager reports to the Joint Information Center at an Alert and is responsible for monitoring media outlets and public inquiries and reports and rectifies erroneous information, coordinates activities of media inquiry telephone responders, ensures monitoring of news outlets, coordinates correction of rumors/media misinformation, provides public inquiry staff with press releases and corrected rumor information.

**Table C-1 MINIMUM STAFFING REQUIREMENTS (STPEGS)
(Including Capability for Additional Staffing)**

MAJOR FUNCTIONAL AREA	POSITION TITLE	UNIT 1/2 ONSHIFT*	UNIT 3/4 ONSHIFT*	ONSITE ONSHIFT	AVAILABLE 60 MINUTES	AVAILABLE 75 MINUTES
<i>Plant Operations and Assessment of Operational Aspects</i>	<i>Shift Supervisor</i>	-	-	2	-	-
	<i>Unit Supervisor</i>	1	1	-	-	-
	<i>Reactor Operators</i>	2	2	-	-	-
	<i>Plant Operators</i>	2	2	-	-	-
	<i>Shift Technical Advisor</i>	-	-	1**	-	-
	<i>Plant Operations Discipline Lead</i>	-	-	-	-	1##
<i>Emergency Direction and Control *** (Emergency Director)</i>	<i>Shift Supervisor</i>	1**	1**	-	-	-
<i>Notification/ Communications</i>	-	-	-	2	-	2
<i>Radiological Accident Assessment and Support of Operational Accident Assessment</i>	<i>Emergency Director</i>	-	-	-	-	1
	<i>Senior Health Physics Expertise (Dose Assessment)</i>	-	-	1	-	-
	<i>RP Technicians (onsite/offsite surveys)</i>	-	-	2	3	4
	<i>Chemistry Technician</i>	-	-	1	-	1

**Table C-1 MINIMUM STAFFING REQUIREMENTS (STPEGS)
(Including Capability for Additional Staffing) (Continued)**

MAJOR FUNCTIONAL AREA	POSITION TITLE	UNIT 1/2 ONSHIFT*	UNIT 3/4 ONSHIFT*	ONSITE ONSHIFT	AVAILABLE 60 MINUTES	AVAILABLE 75 MINUTES
<i>Plant System Engineering</i>	<i>Shift Technical Advisor</i>	-	-	1**	-	-
	<i>Nuclear Engineer</i>	-	-	-	1	-
	<i>Electrical Engineer</i>	-	-	-	-	1
	<i>Mechanical Engineer</i>	-	-	-	-	1
<i>Repair and Corrective Actions</i>	<i>Radwaste Operator</i>	1**	1**			
	<i>Mechanical Maintenance</i>		-	1**	-	1
	<i>Electrical Maintenance</i>	-	-	1** AND 1	-	1
	<i>I&C Technician</i>	-	-	1	-	-
<i>Protective Actions</i>	<i>RP Technicians (Access Control/RP Coverage for corrective actions, search and rescue, first aid, and fire-fighting/ Personnel Monitoring/ Dosimetry)</i>	-	-	2**	4	-
<i>Fire Suppression</i>	<i>Plant Operations personnel</i>	-	-	<i>Fire Brigade per Technical Specifications</i>	<i>Local Support</i>	<i>Local Support</i>

**Table C-1 MINIMUM STAFFING REQUIREMENTS (STPEGS)
(Including Capability for Additional Staffing) (Continued)**

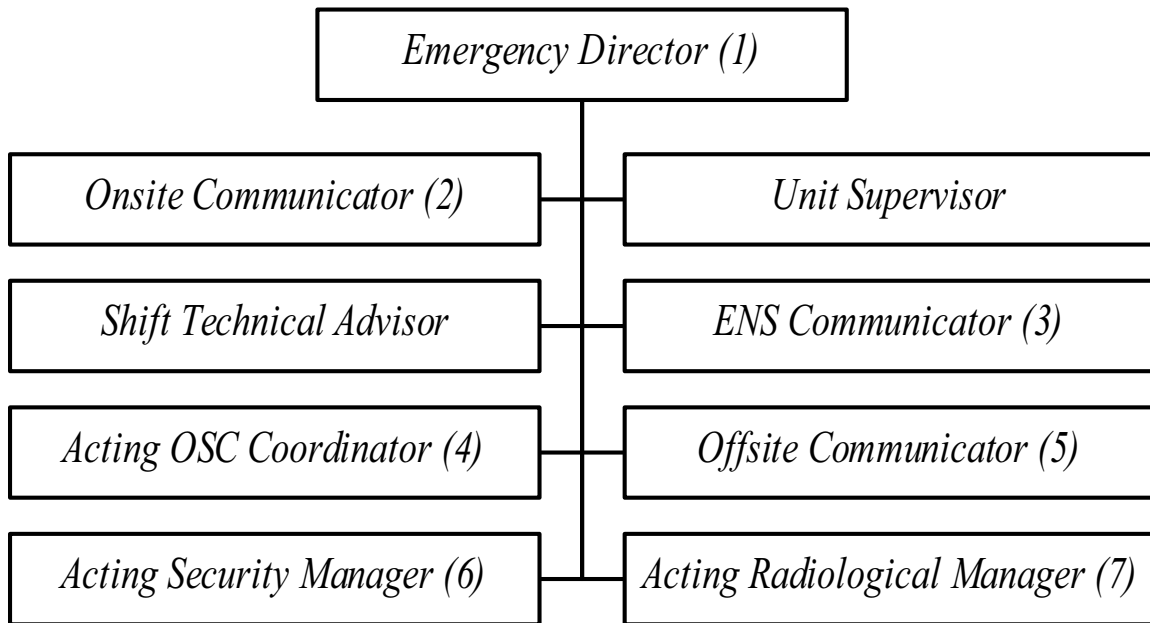
MAJOR FUNCTIONAL AREA	POSITION TITLE	UNIT 1/2 ONSHIFT*	UNIT 3/4 ONSHIFT*	ONSITE ONSHIFT	AVAILABLE 60 MINUTES	AVAILABLE 75 MINUTES
Rescue Operations and First Aid	Plant Protection Personnel	-	-	2**	Local Support	Local Support
Site Access Control and Personnel Accountability	Plant Protection Personnel (Security/ Communications/ Personnel Accountability)	-	-	All per Security Plan	-	-
	TOTAL	5	5	15	8	13

Notes: * For each unaffected unit in operation, maintain at least one Unit Supervisor, two Reactor Operators, and two Plant Operators. In accordance with Section 6.0 of the Technical Specifications for each unit, the shift crew composition may be less than the minimum number of operators (licensed or non-licensed) shown above for a period of time not to exceed two (2) hours in order to accommodate unexpected absences of on-duty shift crew members, provided immediate actions are taken to restore the crew composition. The minimum staff for a unit in cold shutdown will be one Senior Reactor Operator, one Reactor Operator, and one Plant Operator for that unit.

** These positions may be covered by onshift personnel assigned other functions.

*** Overall, direction of emergency response to be assumed by the Emergency Director at the Emergency Operations Facility when all centers are fully manned. Direction of minute-to-minute facility operation remains with senior manager in the Technical Support Center or Control Room.

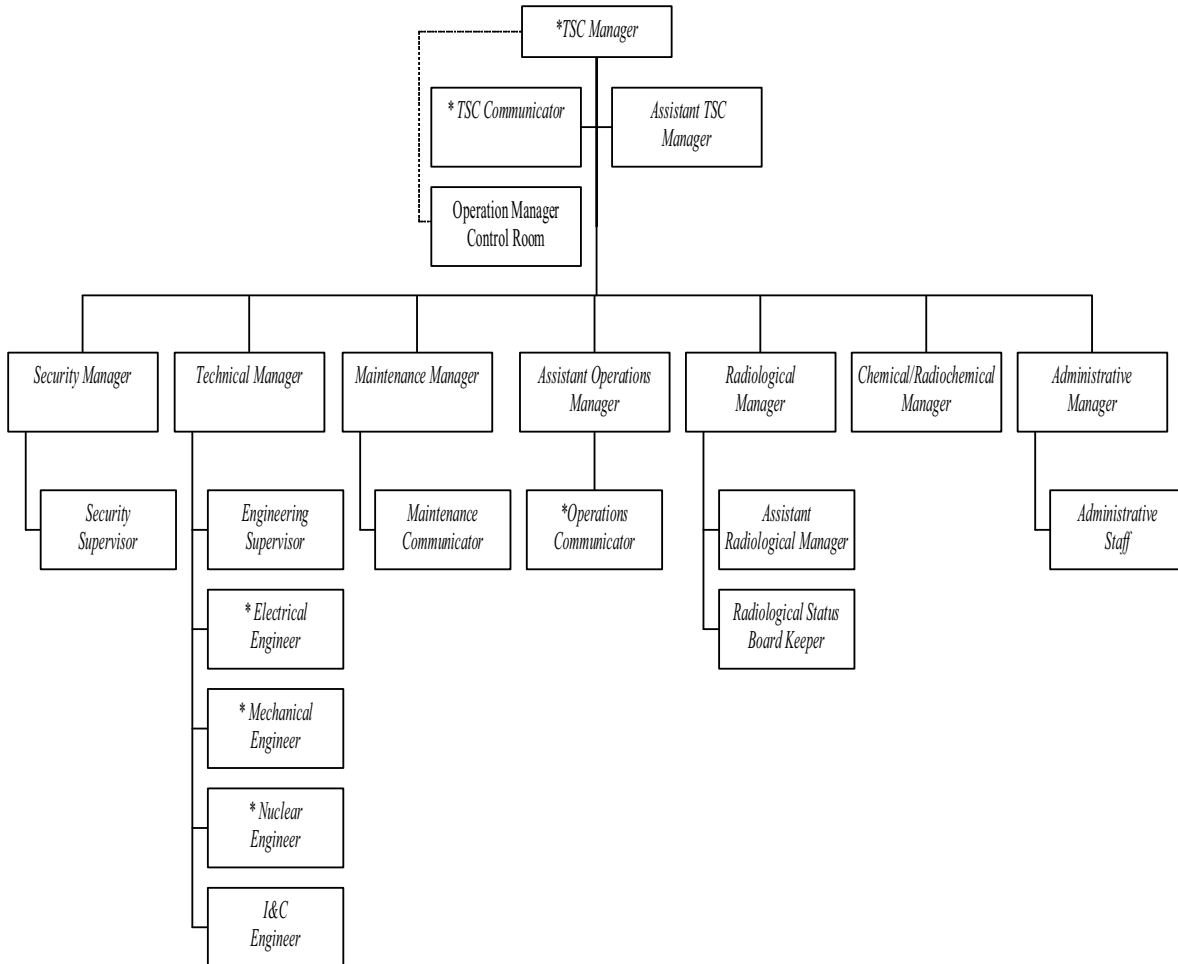
This position is filled by personnel with plant operations experience



()- Identifies onshift personnel position titles

- (1) Shift Supervisor;
- (2) Plant Protection
- (3) Reactor Operator, currently or previously licensed by NRC, or SRO Management Certified Personnel
- (4) Duty Maintenance Supervisor
- (5) Plant Operator
- (6) Security Force Supervisor
- (7) Senior Radiation Protection Technician.

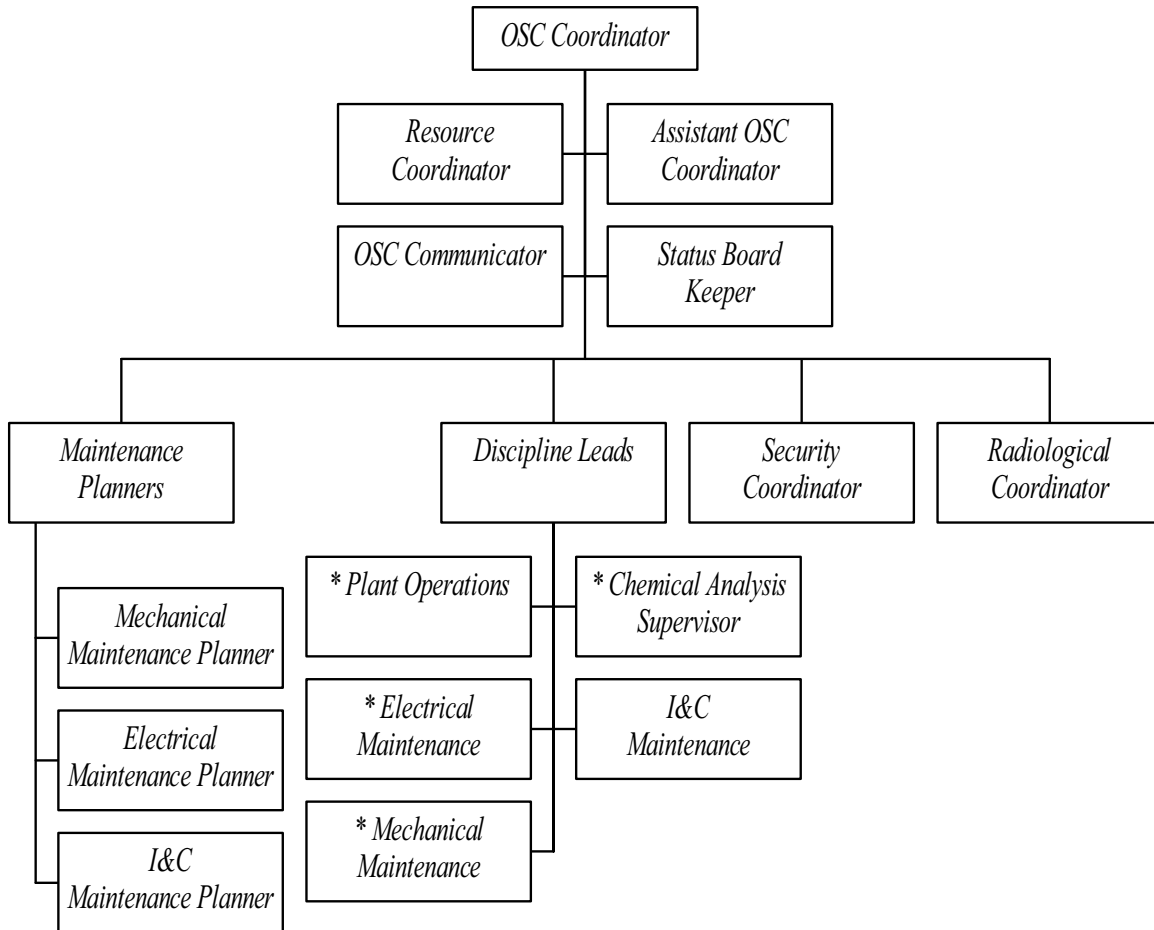
Figure C-1 Onshift Emergency Response Organization



**Required Minimum Staffing.*

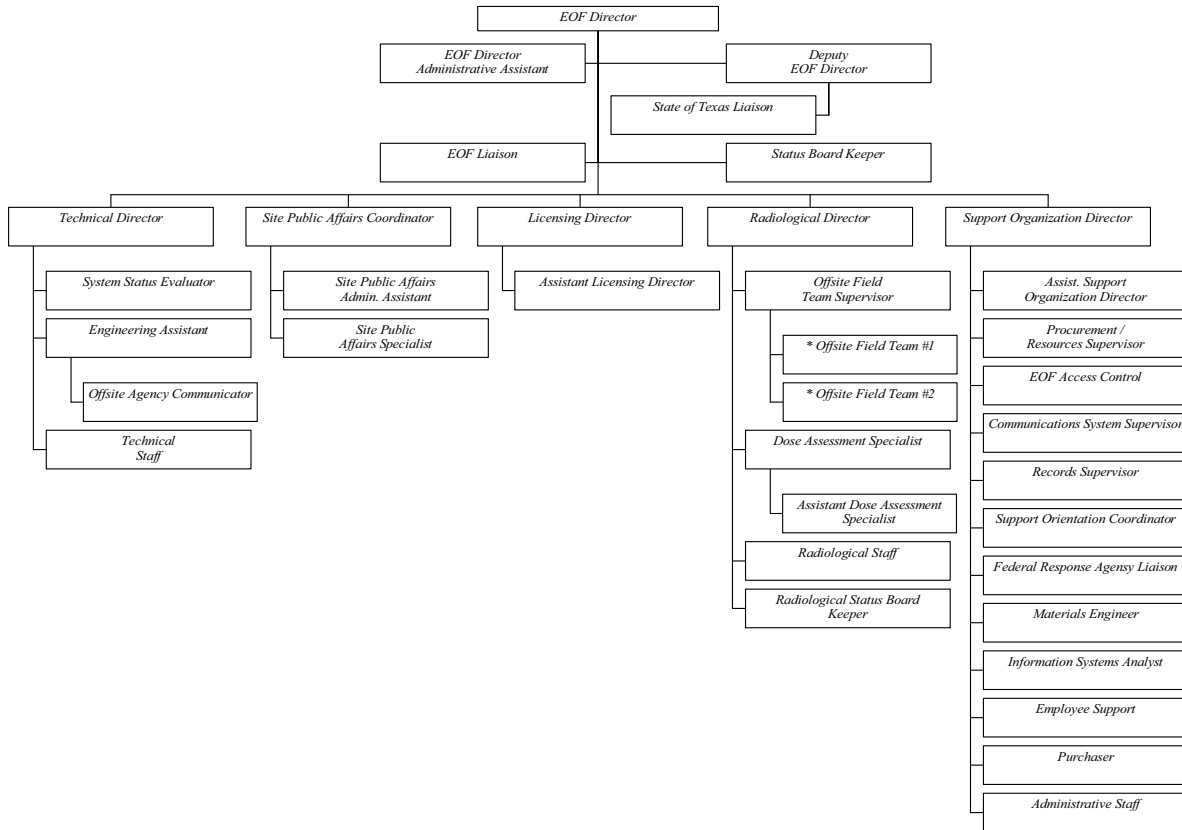
The Assistant TSC Manager may fill the TSC Manager position in his absence.

Figure C-2 Technical Support Center (TSC) Staffing



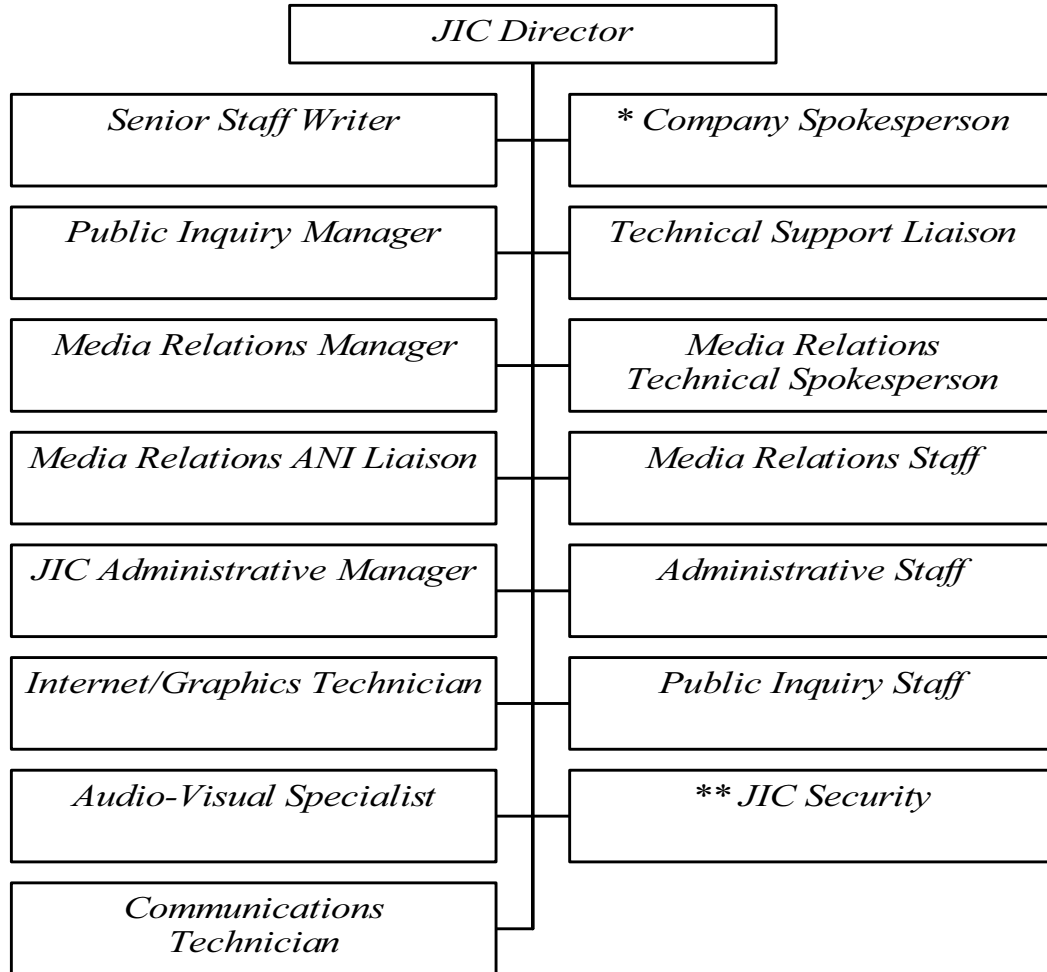
Required Minimum Staffing: Mechanic, Electricians (2), I&C Technician, Chemistry Technician, and Radiation Protection Technicians (7)

Figure C-3 Operations Support Center (OSC) Staffing



*Required Minimum Staffing

Figure C-4 Emergency Operations Facility (EOF) Staffing



* Required Minimum Staffing

** Supplied by Local Law Enforcement

Figure C-5 Joint Information Center (JIC) Staffing

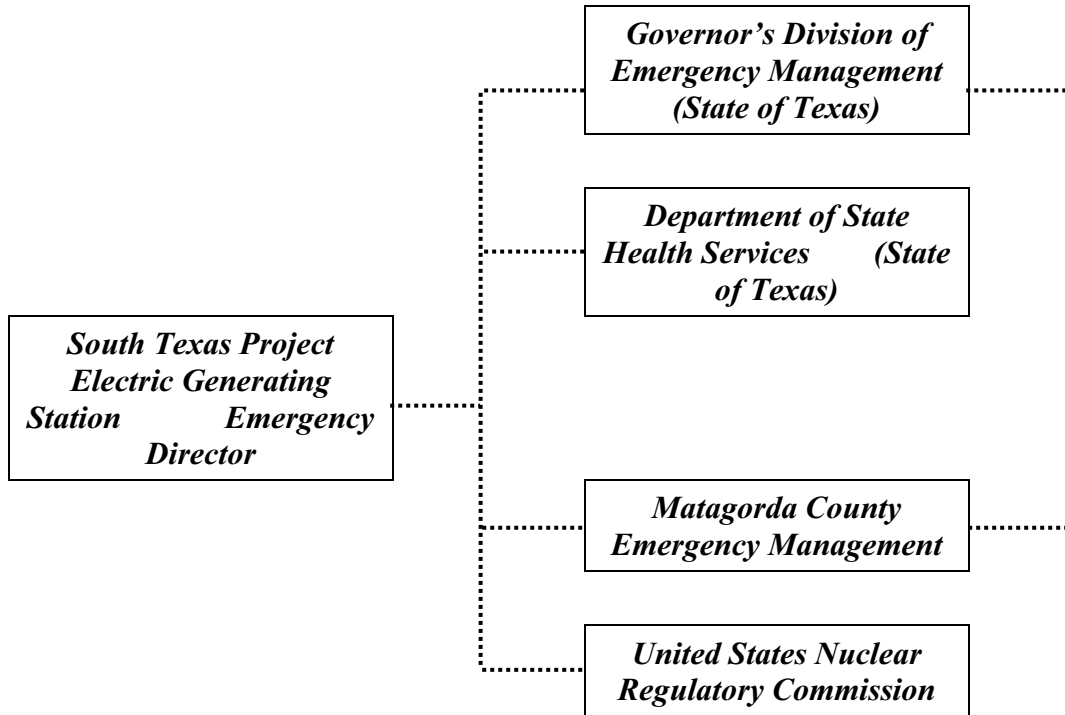


Figure C-6 Station Emergency Response Organization and Offsite Interfaces

