

Figure 2.5S.1-19 Quaternary Deposits of the Gulf Coastal Plain

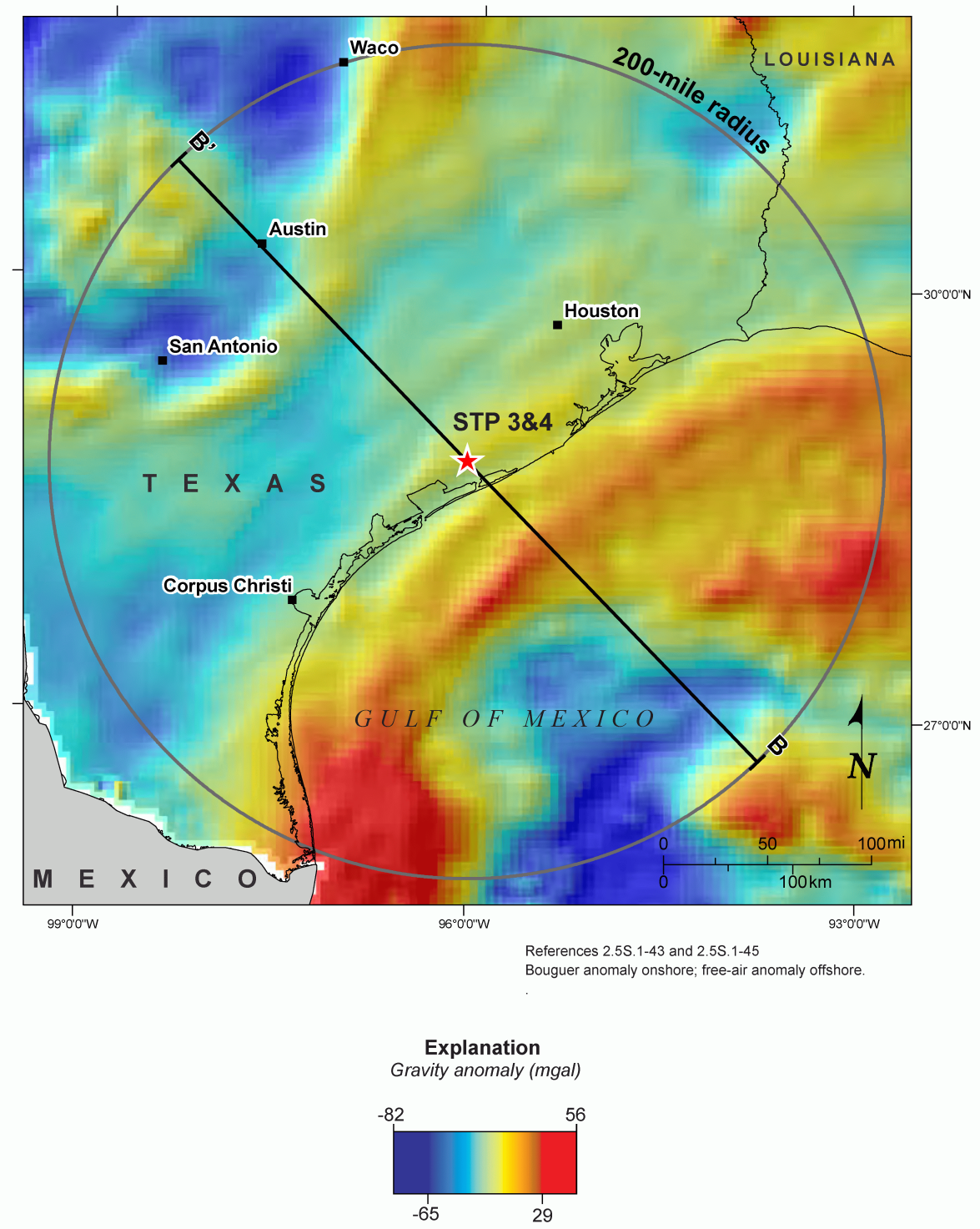
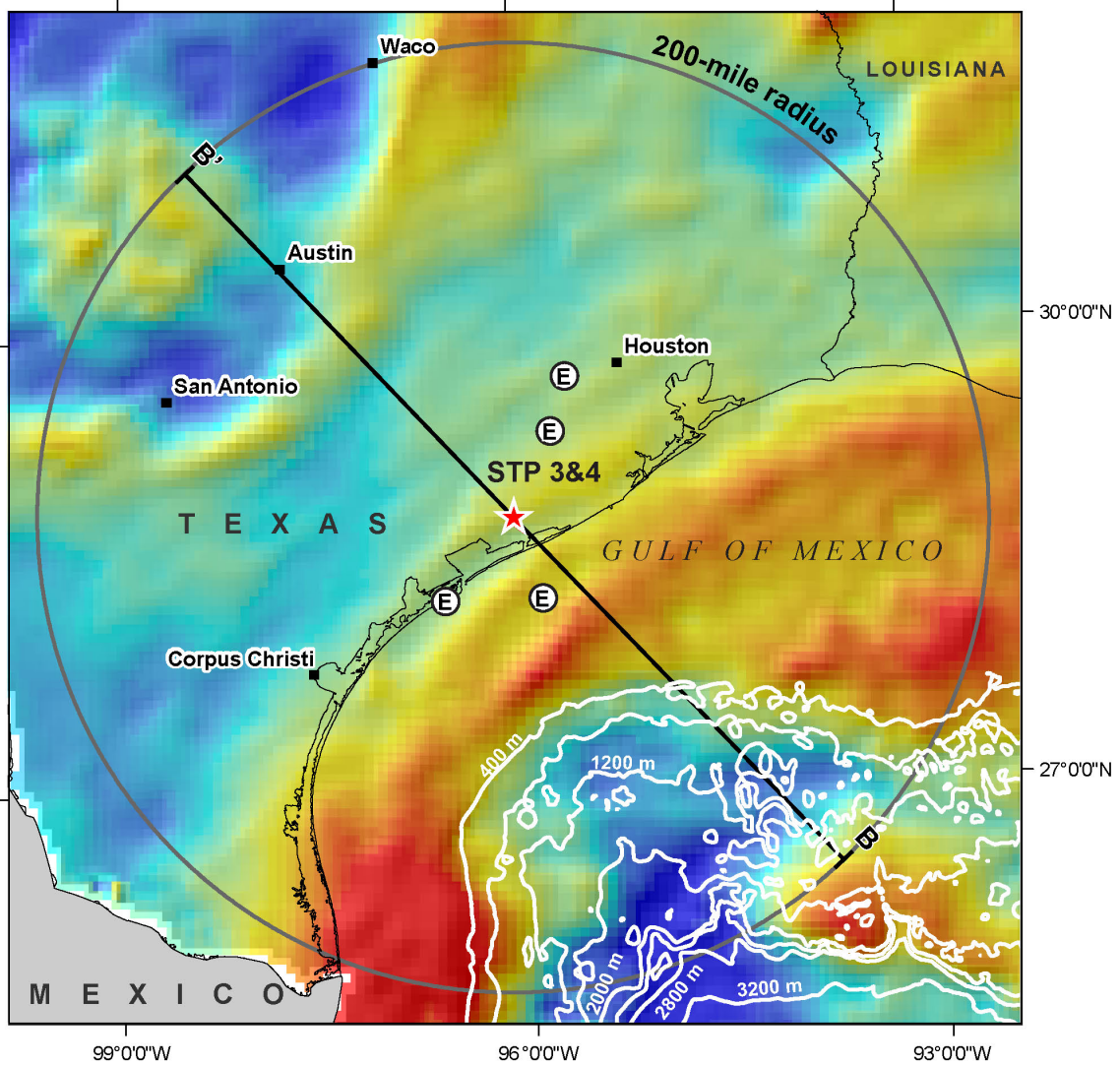


Figure 2.5S.1-20 Regional Gravity Anomaly Map



References 2.5S.1-43, 2.5S.1-45, and 2.5S.1-89

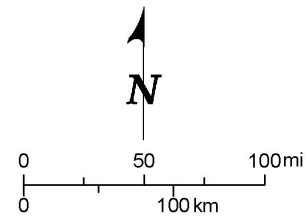
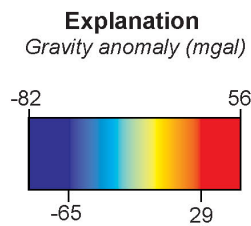


Figure 2.5S.1-21 Gravity Anomaly and Bathymetry

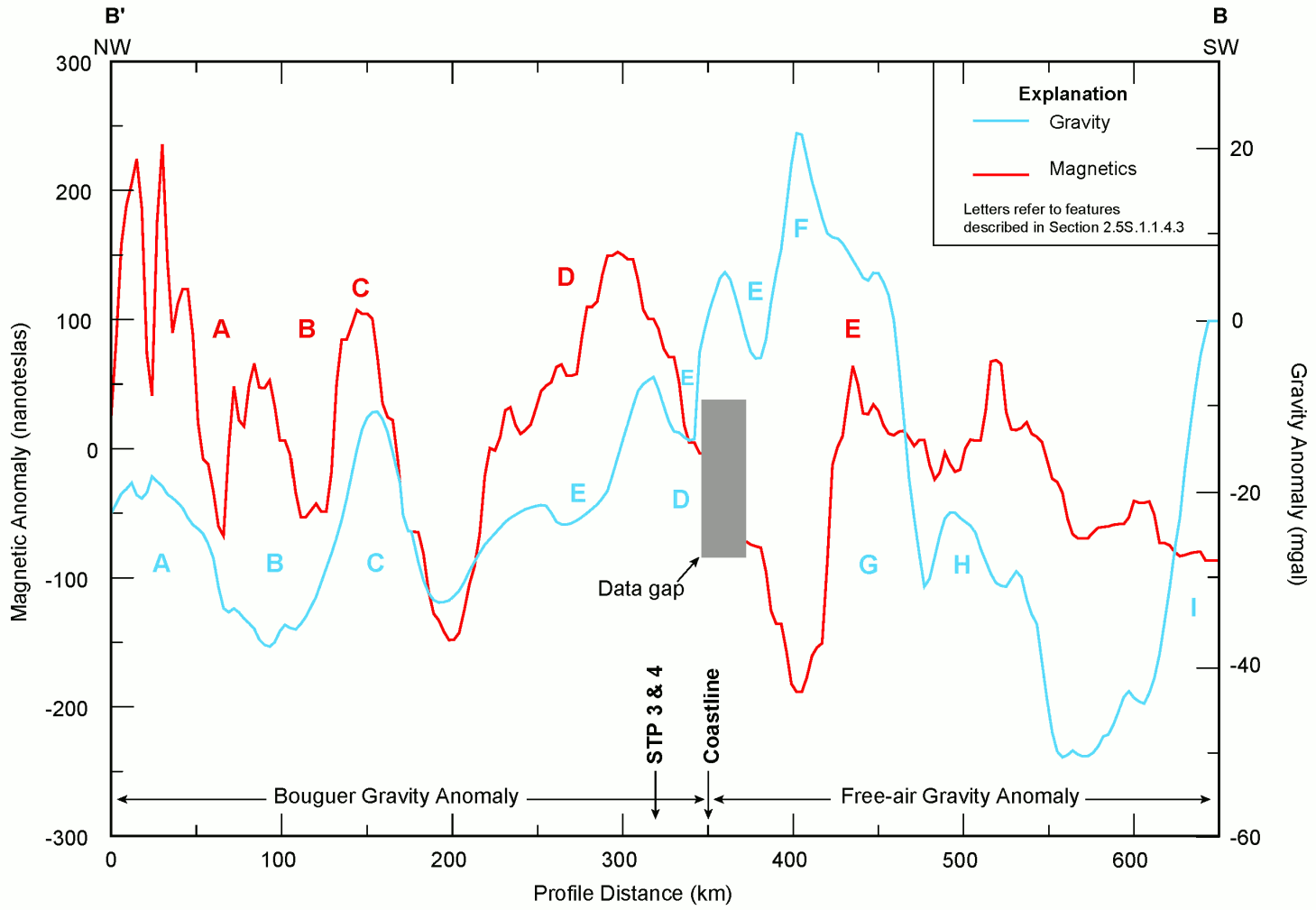


Figure 2.5S.1-22 Gravity and Magnetic Profiles, B-B'

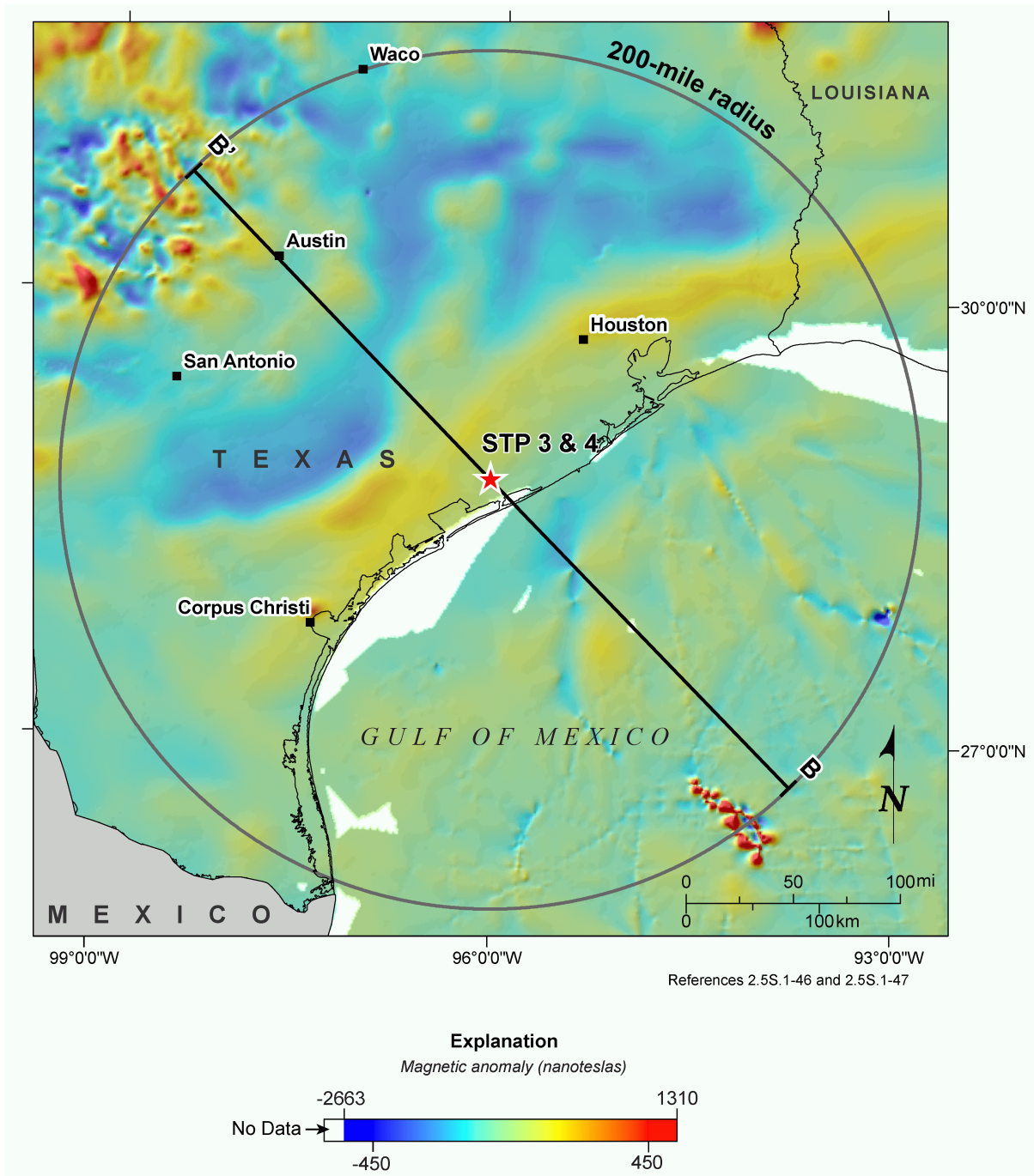


Figure 2.5S.1-23 Regional Magnetic Anomaly Map



Explanation

- Mt. Enterprise - Elkhart graben from Reference 2.5S.1-121
- Generalized zone of growth faults (Class B features, Reference 2.5S.1-49) in the Coastal Plain of south Texas

Earthquake Epicenters (by estimated body wave magnitude Emb)	
EPRI 1986 Seismicity Catalog (1627-1985)	Updated Seismicity Catalog (1847-2006)
• 3.00 - 3.99	• 3.00 - 3.99
• 4.00 - 4.99	• 4.00 - 4.99

Figure 2.5S.1-24 Potential Quaternary Features in Site Region (200-mile radius)

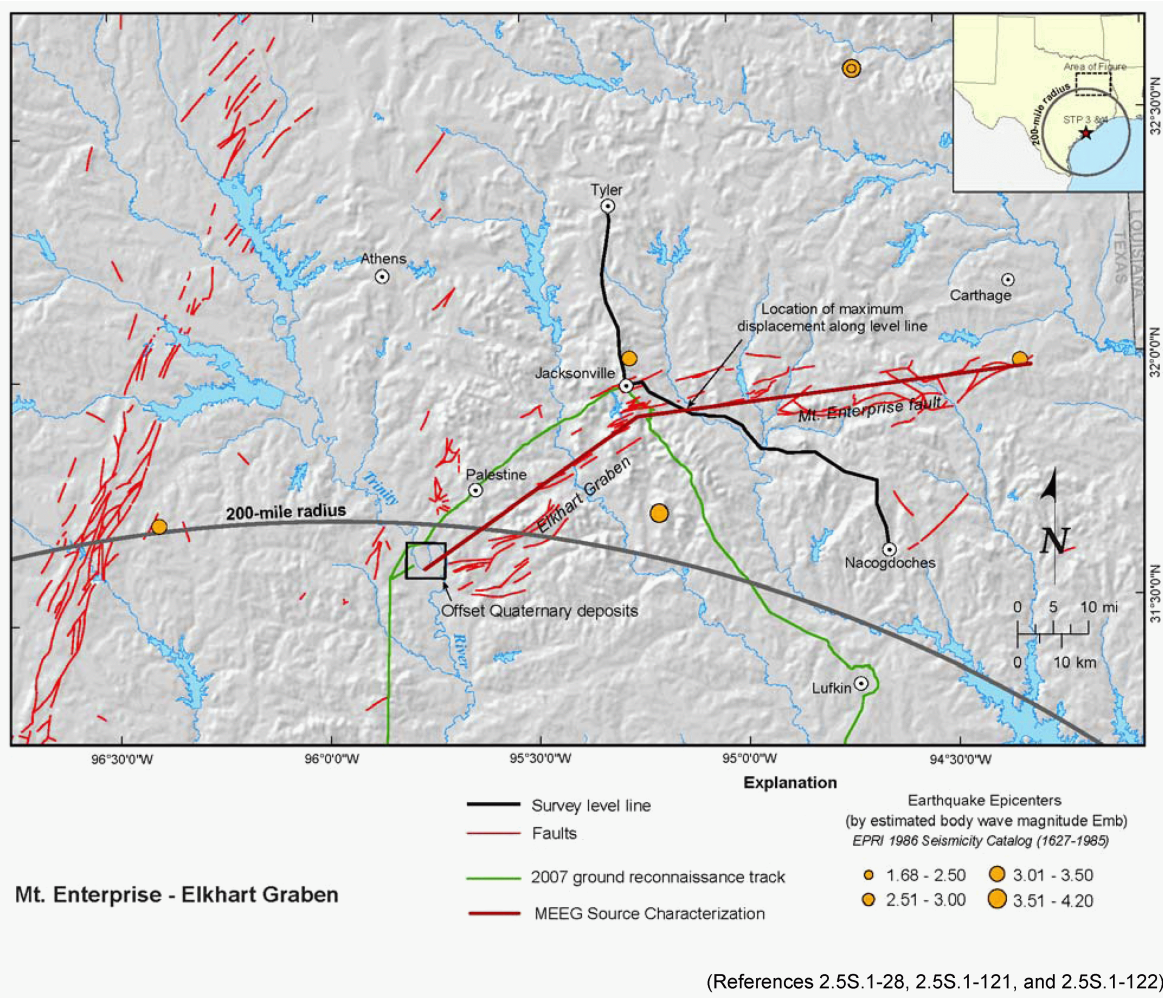


Figure 2.5S.1-25 Mt. Enterprise - Elkhart Graben

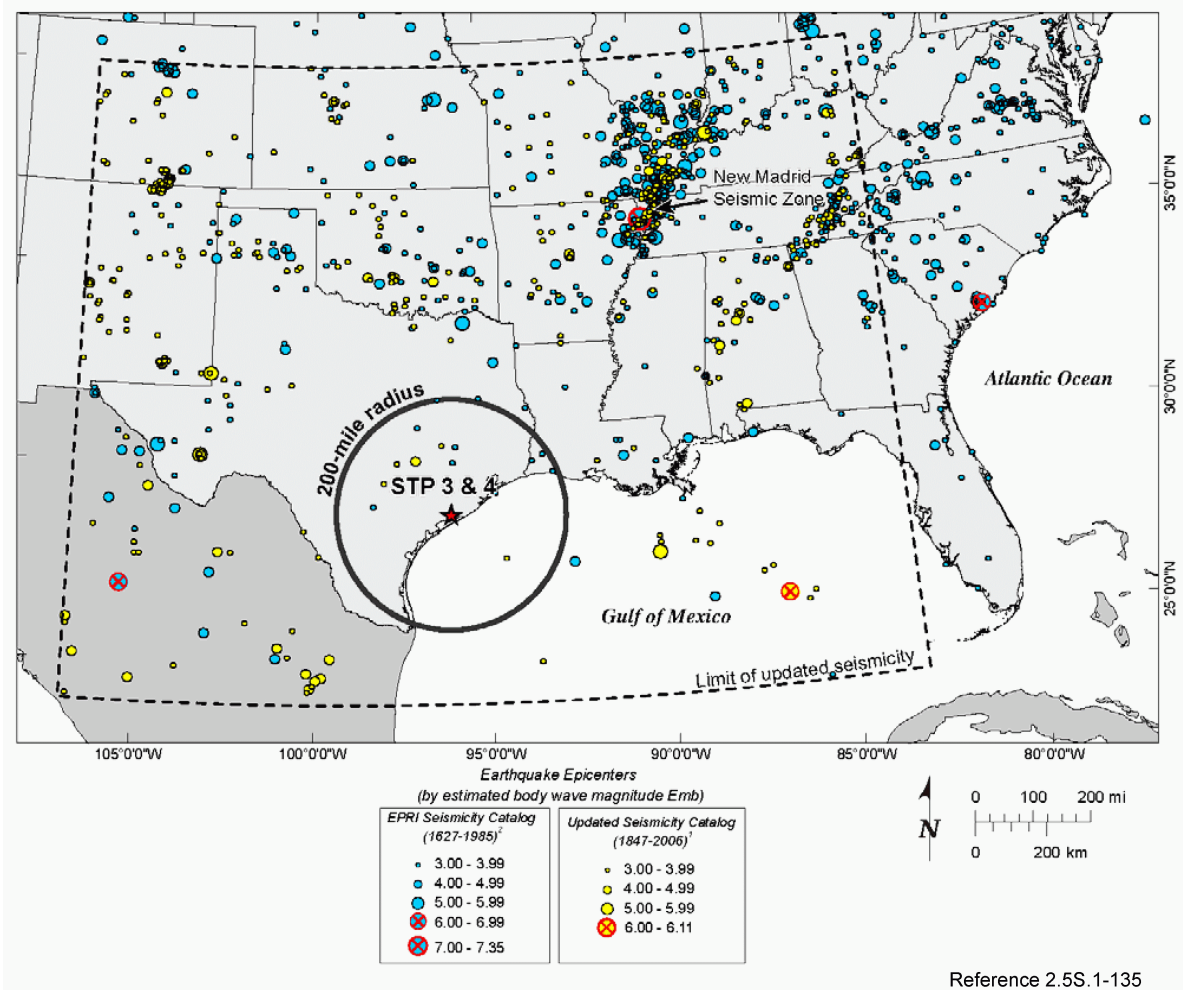


Figure 2.5S.1-26 New Madrid Seismic Zone

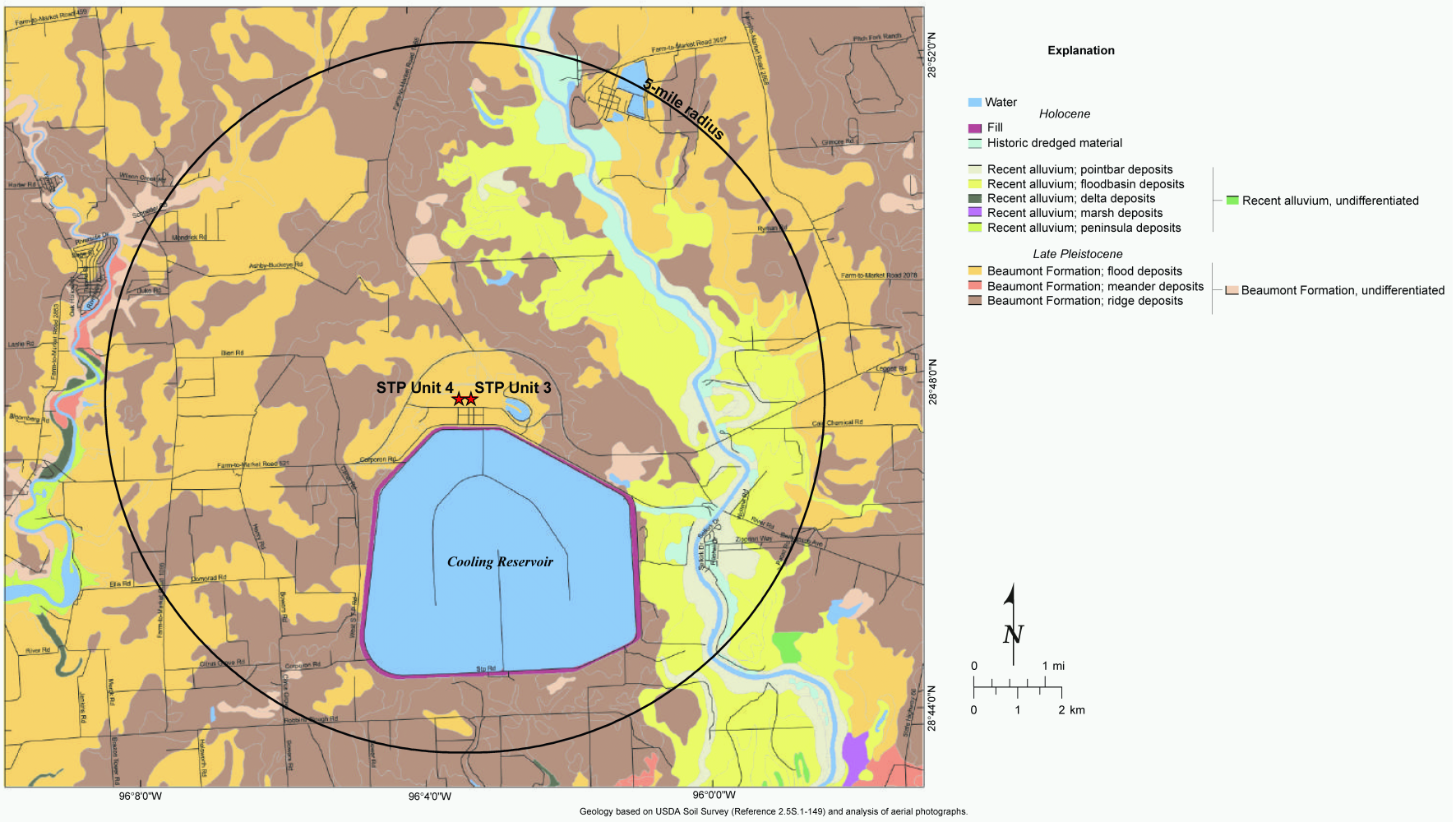


Figure 2.5S.1-27 Site Area Geological Map (5-mile radius)