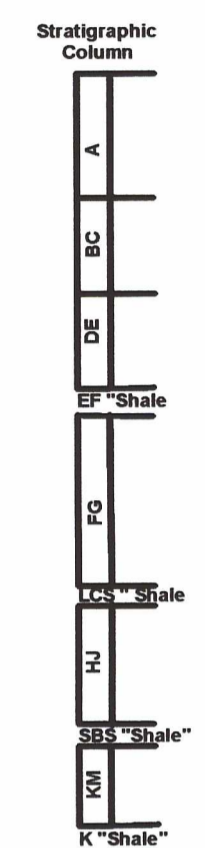
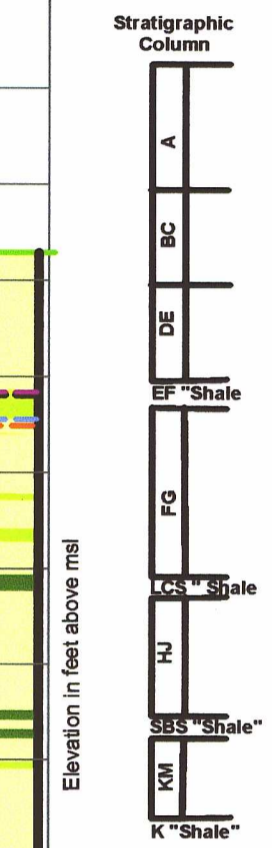
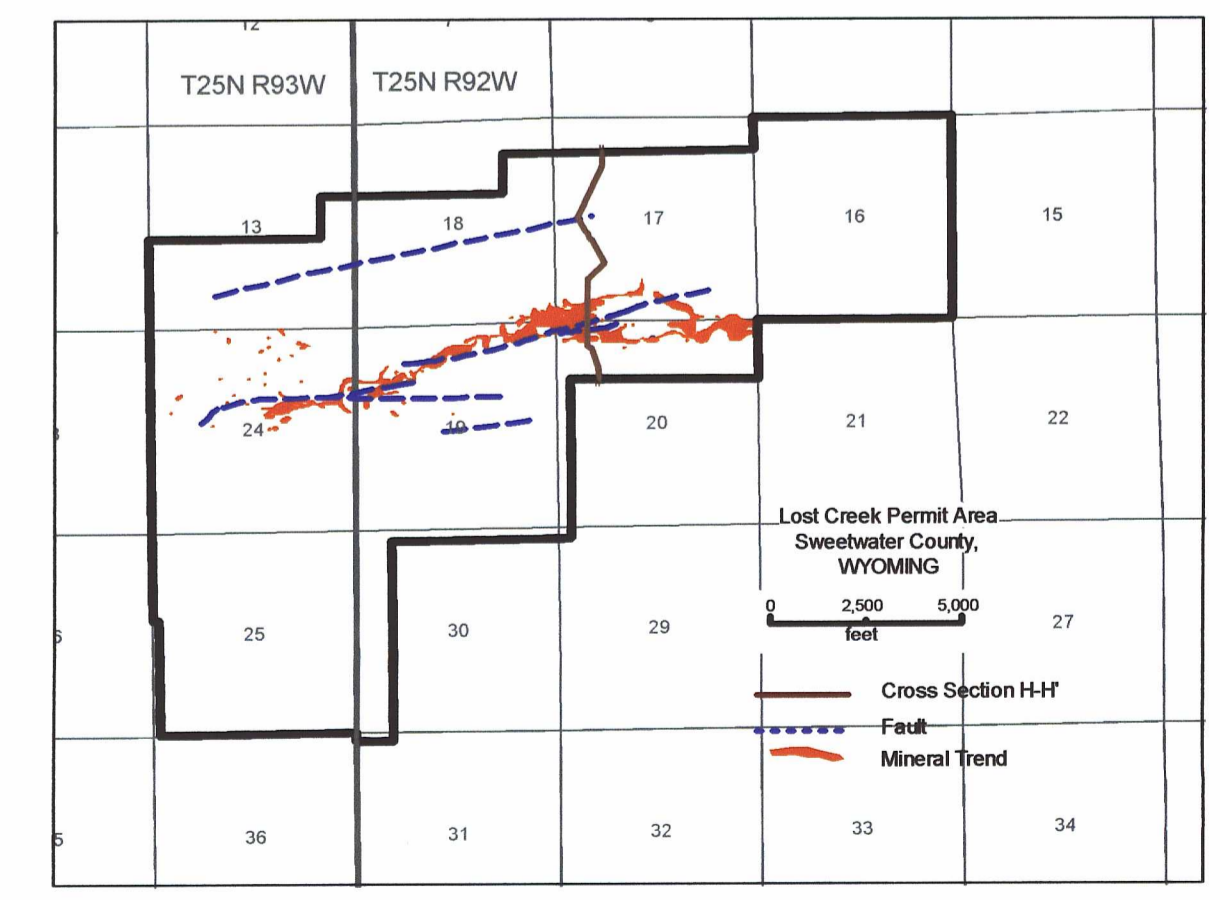
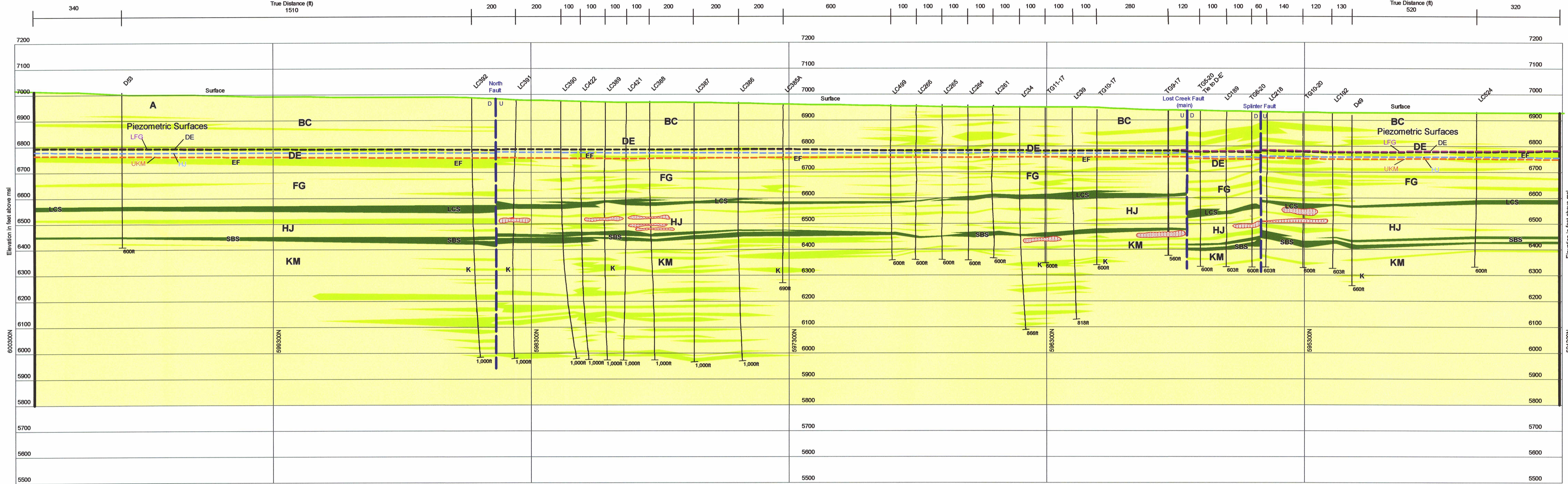


H North

H' South



Lost Creek ISR, LLC
Littleton, Colorado, USA

ALTA INTERNATIONAL, INC.
Frisco, CO, USA

Legend

Mineralization

- A - A Horizon
- BC - BC Horizon
- DE - DE Horizon
- FG - FG Horizon
- LCS - Lost Creek "Shale"
- HJ - HJ Horizon
- SBS - Sage Brush "Shale"
- KM - KM Horizon
- K - K "Shale"

Aquitard

- LCS - Lost Creek "Shale"
- SBS - Sage Brush "Shale"
- KM - KM Horizon
- K - K "Shale"

Sand

- BC - BC Horizon
- DE - DE Horizon
- FG - FG Horizon
- HJ - HJ Horizon
- KM - KM Horizon
- K - K "Shale"

Cross Section projected onto H-H' vertical plane

PLATE D5-1g
Cross Section H-H'
Lost Creek Permit Area

Issued For: WDEQ-LQD1.0 Drawn By: CVH
Issued/Revised: 10.11.07/05.20.10
Drawing No.: WDEQ-LQD1.0 PLATE D5-1g 10.11.07

1" = 30' (no vertical exaggeration)

Potentiometric surfaces as illustrated are interpolated from corresponding regional potentiometric surface contour maps (Figures D6-11e to D6-11h)

01807