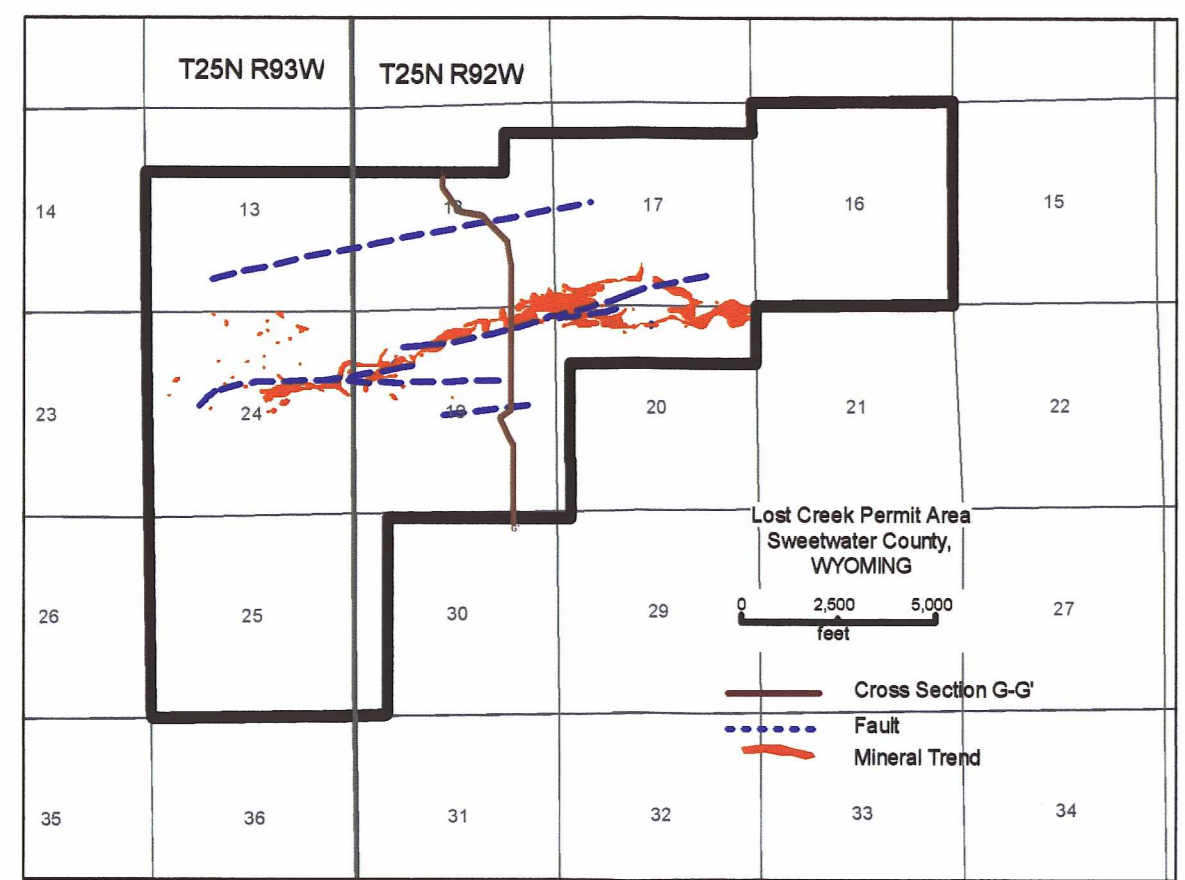
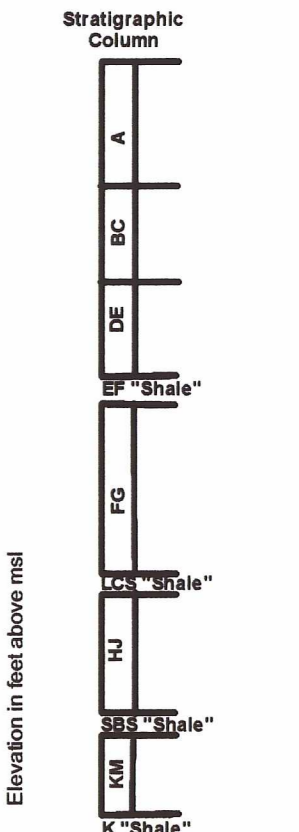
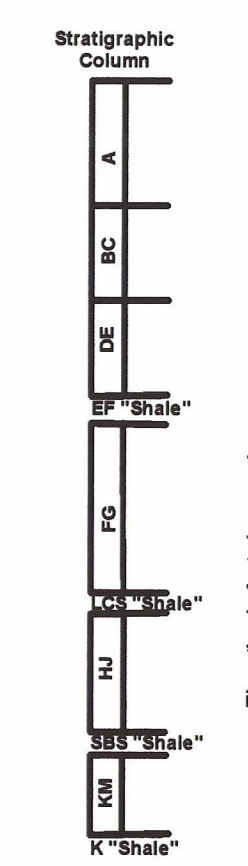
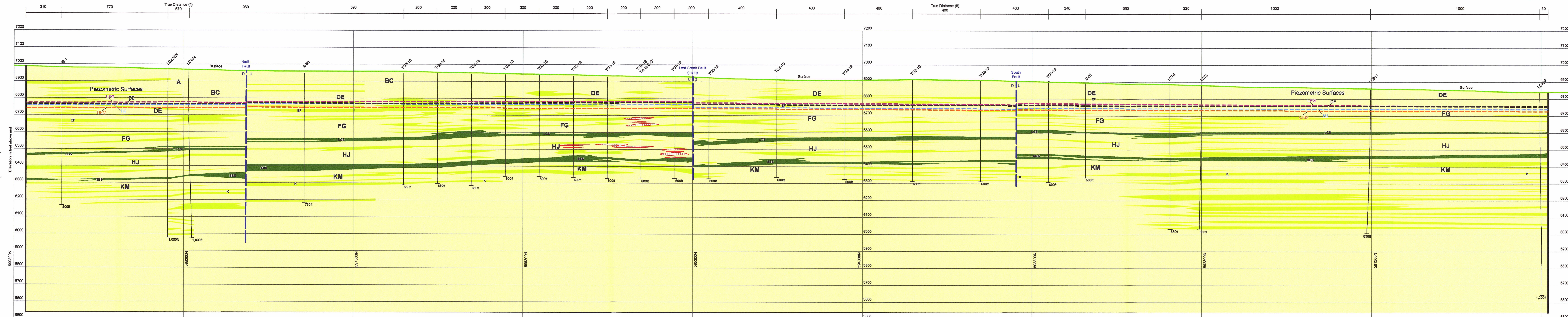


G North G' South



Lost Creek ISR, LLC
Littleton, Colorado, USA

ATA INTERNATIONAL, INC.
Fort Collins, Colorado, USA

Legend

Stratigraphic Units	A - Horizon
Mineralization	BC - Horizon
	DE - Horizon
	FG - Horizon
	HJ - Horizon
	KM - Horizon
Aquitard	Loss - Lost Creek "Shale"
	SBS - Sage Bush "Shale"
	K - "Shale"
Sand	

PLATE D5-1f
Cross Section G-G'
Lost Creek Permit Area
Issued For: WDEQ-LQD1.0 Drawn By: CVH
Issued/Revised: 10.11.07/05.20.10
Drawing No.: WDEQ-LQD1.0 PLATE D5-1f 10.11.07

01206

Potentiometric surfaces as illustrated are interpolated from corresponding regional potentiometric surface contour maps (Figure D6-11e to D6-11h)

Scale: 1" = 100' (no vertical exaggeration)