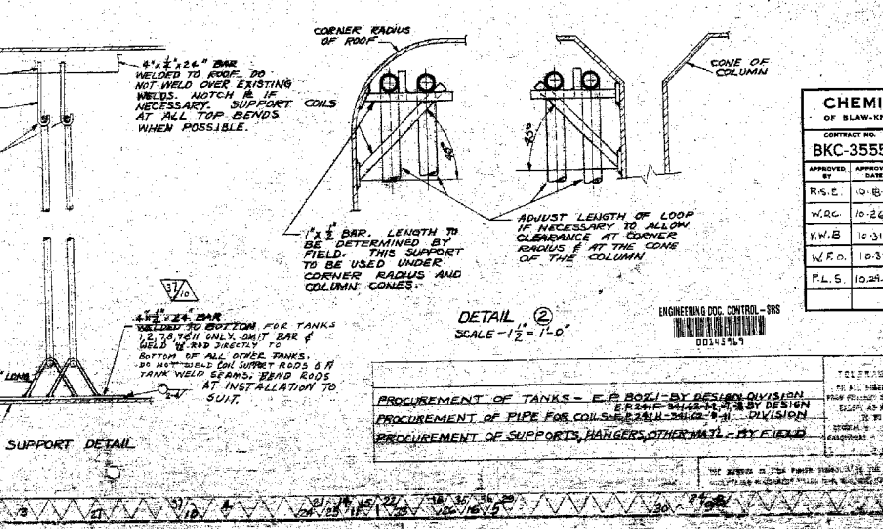
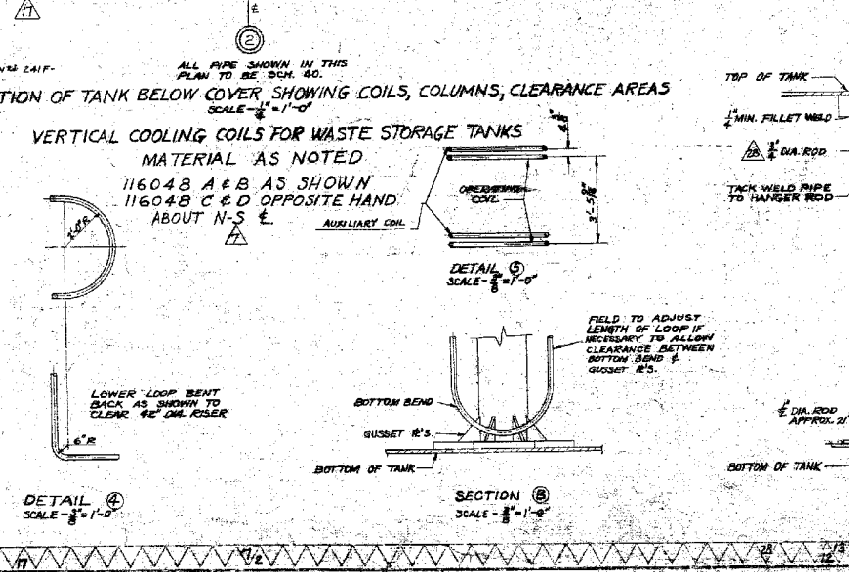
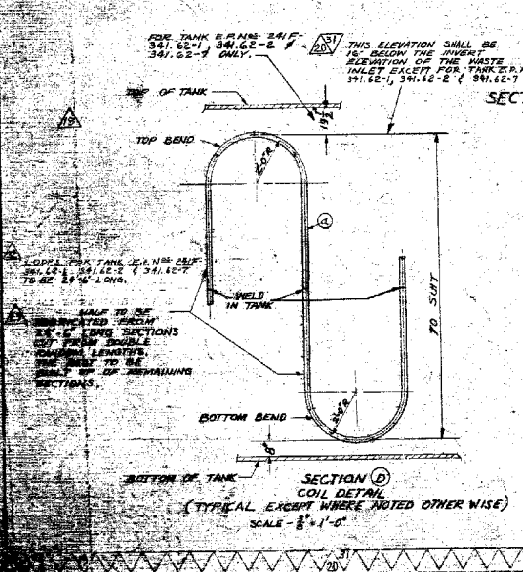
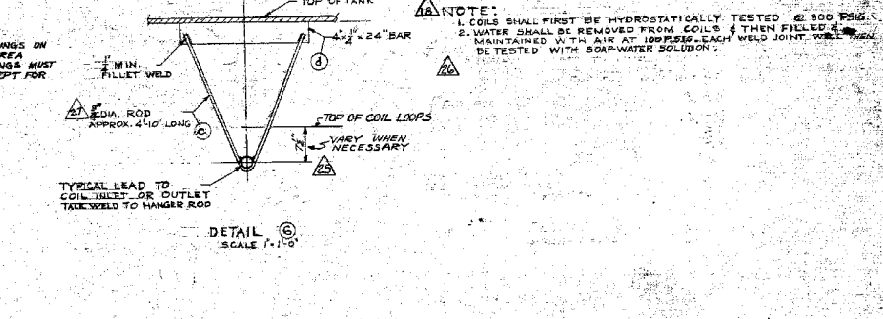
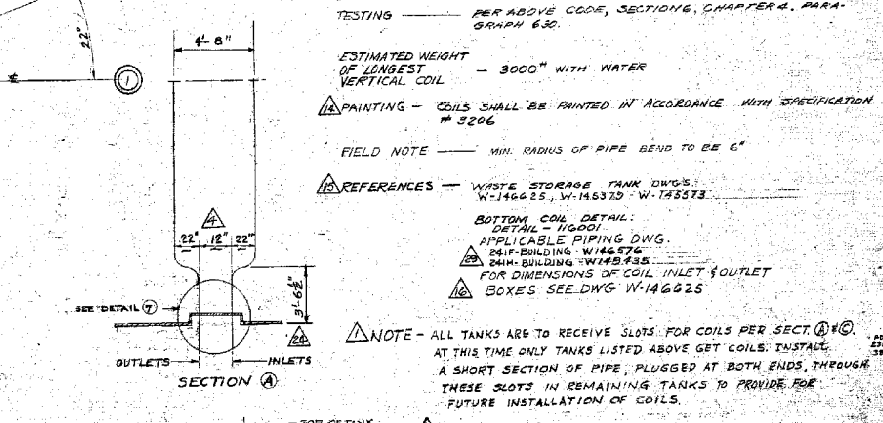
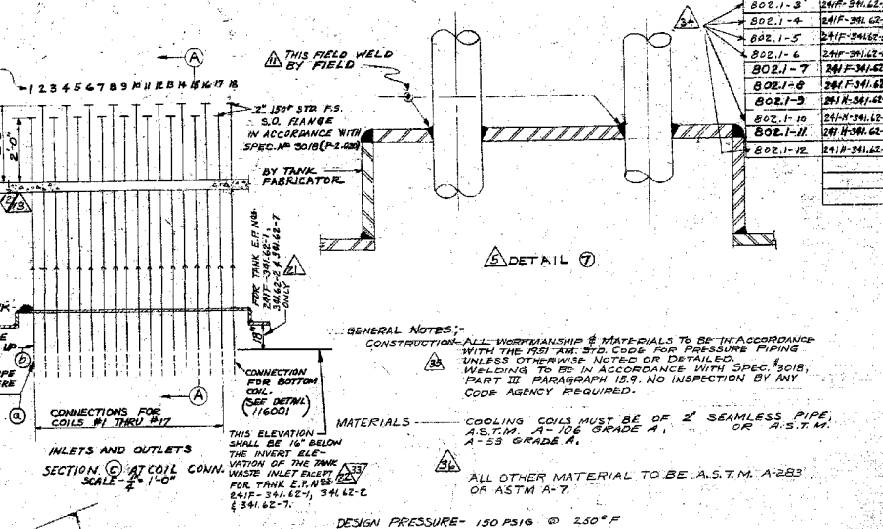
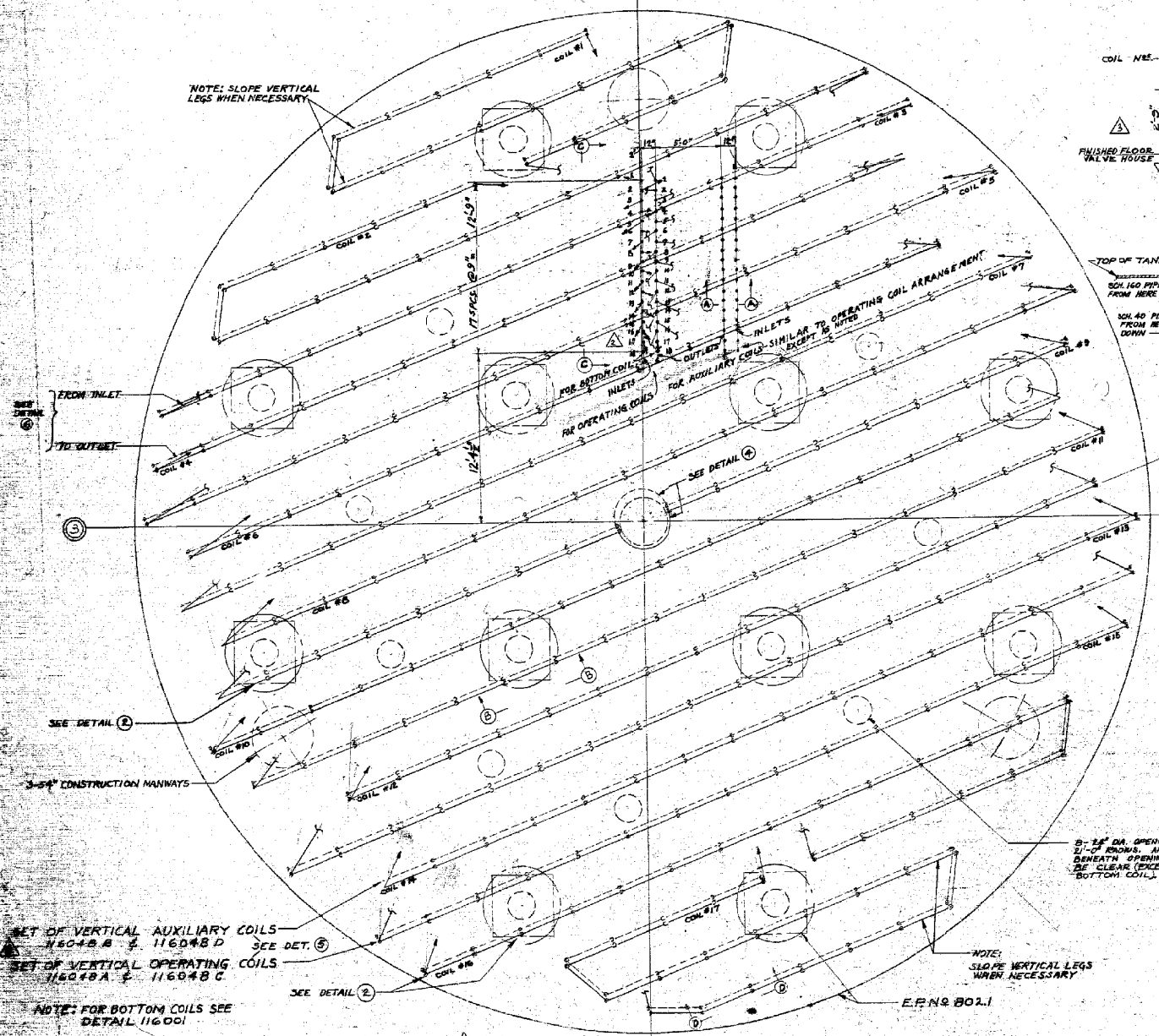


ANALYZE & MARK THIS POINT FOR ALL SAFETY CONSIDERATIONS IN DESIGN OR CONSTRUCTION



TANK	COIL	PIPING	WELDING	INSULATION	PAINTING
802-1-1	24F-3412-1	24F-3412-1	24F-3412-1	24F-3412-1	24F-3412-1
802-1-2	24F-3412-2	24F-3412-2	24F-3412-2	24F-3412-2	24F-3412-2
802-1-3	24F-3412-3	24F-3412-3	24F-3412-3	24F-3412-3	24F-3412-3
802-1-4	24F-3412-4	24F-3412-4	24F-3412-4	24F-3412-4	24F-3412-4
802-1-5	24F-3412-5	24F-3412-5	24F-3412-5	24F-3412-5	24F-3412-5
802-1-6	24F-3412-6	24F-3412-6	24F-3412-6	24F-3412-6	24F-3412-6
802-1-7	24F-3412-7	24F-3412-7	24F-3412-7	24F-3412-7	24F-3412-7
802-1-8	24F-3412-8	24F-3412-8	24F-3412-8	24F-3412-8	24F-3412-8
802-1-9	24F-3412-9	24F-3412-9	24F-3412-9	24F-3412-9	24F-3412-9
802-1-10	24F-3412-10	24F-3412-10	24F-3412-10	24F-3412-10	24F-3412-10
802-1-11	24F-3412-11	24F-3412-11	24F-3412-11	24F-3412-11	24F-3412-11
802-1-12	24F-3412-12	24F-3412-12	24F-3412-12	24F-3412-12	24F-3412-12

GENERAL NOTES:
 CONSTRUCTION: ALL WORKMANSHIP & MATERIALS TO BE IN ACCORDANCE WITH THE ASME CODE FOR PRESSURE PIPING UNLESS OTHERWISE NOTED OR DETAILED. WELDING TO BE IN ACCORDANCE WITH SPEC. 3015, PART III PARAGRAPH 12.9. NO INSPECTION BY ANY CODE AGENCY REQUIRED.
 MATERIALS: COOLING COILS MUST BE OF 2" SEAMLESS PIPE, A.S.T.M. A-106 GRADE A, OR A.S.T.M. A-53 GRADE A.
 ALL OTHER MATERIAL TO BE A.S.T.M. A-283 OR A.S.T.M. A-7.
 DESIGN PRESSURE - 150 PSIG @ 250°F
 TESTING - PER ABOVE CODE, SECTION 6, CHAPTER 4, PARAGRAPH 6.30.
 ESTIMATED WEIGHT OF LONGEST COIL - 3000" WITH WATER
 PAINTING - COILS SHALL BE PAINTED IN ACCORDANCE WITH SPECIFICATION # 3206
 FIELD NOTE - MIN. RADIUS OF PIPE BEND TO BE 6"

REFERENCES: WASTE STORAGE TANK DWG'S: W-14625, W-14572, W-14573.
 BOTTOM COIL DETAIL: DETAIL - 116001
 APPLICABLE PIPING DWG.: 24F-BUILDING-W-14574
 24F-BUILDING-W-14575
 FOR DIMENSIONS OF COIL INLET & OUTLET BOXES SEE DWG. W-14625

NOTE: ALL TANKS ARE TO RECEIVE SLOTS FOR COILS PER SECT. A & B. AT THIS TIME ONLY TANKS LISTED ABOVE GET COILS. INSTALL A SHORT SECTION OF PIPE - PLUGGED AT BOTH ENDS THROUGH THESE SLOTS IN REMAINING TANKS TO PROVIDE FOR FUTURE INSTALLATION OF COILS.

NOTE:
 1. COILS SHALL FIRST BE HYDROSTATICALLY TESTED @ 200 PSIG.
 2. WATER SHALL BE REMOVED FROM COILS & THEN FILLED & MAINTAINED WITH AIR AT 100 PSIG EACH WELD JOINT SHALL BE TESTED WITH SOAP-WATER SOLUTION.

REVISIONS:
 1. NOTE ADDED
 2. INLET & OUTLET PERMANENTLY PLUGGED AT BOTH ENDS
 3. DIMENSIONS OF COIL INLET & OUTLET BOXES SEE DWG. W-14625
 4. WELD W/ 1/8" DIA. ROD
 5. WELD W/ 1/8" DIA. ROD
 6. WELD W/ 1/8" DIA. ROD
 7. WELD W/ 1/8" DIA. ROD
 8. WELD W/ 1/8" DIA. ROD
 9. WELD W/ 1/8" DIA. ROD
 10. WELD W/ 1/8" DIA. ROD
 11. WELD W/ 1/8" DIA. ROD
 12. WELD W/ 1/8" DIA. ROD
 13. WELD W/ 1/8" DIA. ROD
 14. WELD W/ 1/8" DIA. ROD
 15. WELD W/ 1/8" DIA. ROD
 16. WELD W/ 1/8" DIA. ROD
 17. WELD W/ 1/8" DIA. ROD
 18. WELD W/ 1/8" DIA. ROD
 19. WELD W/ 1/8" DIA. ROD
 20. WELD W/ 1/8" DIA. ROD
 21. WELD W/ 1/8" DIA. ROD
 22. WELD W/ 1/8" DIA. ROD
 23. WELD W/ 1/8" DIA. ROD
 24. WELD W/ 1/8" DIA. ROD
 25. WELD W/ 1/8" DIA. ROD
 26. WELD W/ 1/8" DIA. ROD
 27. WELD W/ 1/8" DIA. ROD
 28. WELD W/ 1/8" DIA. ROD
 29. WELD W/ 1/8" DIA. ROD
 30. WELD W/ 1/8" DIA. ROD
 31. WELD W/ 1/8" DIA. ROD
 32. WELD W/ 1/8" DIA. ROD
 33. WELD W/ 1/8" DIA. ROD
 34. WELD W/ 1/8" DIA. ROD
 35. WELD W/ 1/8" DIA. ROD
 36. WELD W/ 1/8" DIA. ROD
 37. WELD W/ 1/8" DIA. ROD
 38. WELD W/ 1/8" DIA. ROD
 39. WELD W/ 1/8" DIA. ROD
 40. WELD W/ 1/8" DIA. ROD
 41. WELD W/ 1/8" DIA. ROD
 42. WELD W/ 1/8" DIA. ROD
 43. WELD W/ 1/8" DIA. ROD
 44. WELD W/ 1/8" DIA. ROD
 45. WELD W/ 1/8" DIA. ROD
 46. WELD W/ 1/8" DIA. ROD
 47. WELD W/ 1/8" DIA. ROD
 48. WELD W/ 1/8" DIA. ROD
 49. WELD W/ 1/8" DIA. ROD
 50. WELD W/ 1/8" DIA. ROD
 51. WELD W/ 1/8" DIA. ROD
 52. WELD W/ 1/8" DIA. ROD
 53. WELD W/ 1/8" DIA. ROD
 54. WELD W/ 1/8" DIA. ROD
 55. WELD W/ 1/8" DIA. ROD
 56. WELD W/ 1/8" DIA. ROD
 57. WELD W/ 1/8" DIA. ROD
 58. WELD W/ 1/8" DIA. ROD
 59. WELD W/ 1/8" DIA. ROD
 60. WELD W/ 1/8" DIA. ROD
 61. WELD W/ 1/8" DIA. ROD
 62. WELD W/ 1/8" DIA. ROD
 63. WELD W/ 1/8" DIA. ROD
 64. WELD W/ 1/8" DIA. ROD
 65. WELD W/ 1/8" DIA. ROD
 66. WELD W/ 1/8" DIA. ROD
 67. WELD W/ 1/8" DIA. ROD
 68. WELD W/ 1/8" DIA. ROD
 69. WELD W/ 1/8" DIA. ROD
 70. WELD W/ 1/8" DIA. ROD
 71. WELD W/ 1/8" DIA. ROD
 72. WELD W/ 1/8" DIA. ROD
 73. WELD W/ 1/8" DIA. ROD
 74. WELD W/ 1/8" DIA. ROD
 75. WELD W/ 1/8" DIA. ROD
 76. WELD W/ 1/8" DIA. ROD
 77. WELD W/ 1/8" DIA. ROD
 78. WELD W/ 1/8" DIA. ROD
 79. WELD W/ 1/8" DIA. ROD
 80. WELD W/ 1/8" DIA. ROD
 81. WELD W/ 1/8" DIA. ROD
 82. WELD W/ 1/8" DIA. ROD
 83. WELD W/ 1/8" DIA. ROD
 84. WELD W/ 1/8" DIA. ROD
 85. WELD W/ 1/8" DIA. ROD
 86. WELD W/ 1/8" DIA. ROD
 87. WELD W/ 1/8" DIA. ROD
 88. WELD W/ 1/8" DIA. ROD
 89. WELD W/ 1/8" DIA. ROD
 90. WELD W/ 1/8" DIA. ROD
 91. WELD W/ 1/8" DIA. ROD
 92. WELD W/ 1/8" DIA. ROD
 93. WELD W/ 1/8" DIA. ROD
 94. WELD W/ 1/8" DIA. ROD
 95. WELD W/ 1/8" DIA. ROD
 96. WELD W/ 1/8" DIA. ROD
 97. WELD W/ 1/8" DIA. ROD
 98. WELD W/ 1/8" DIA. ROD
 99. WELD W/ 1/8" DIA. ROD
 100. WELD W/ 1/8" DIA. ROD

INVENTORIED BY: [Signature]
 DATE: 5/16/94

APPROVED		DATE
[Signature]	[Signature]	10/15/93
[Signature]	[Signature]	10/26/93
[Signature]	[Signature]	10/31/93
[Signature]	[Signature]	10/24/93

CHEMICAL PLANTS DIVISION
 OF BLAW-KNOX CO.
 HUNTSVILLE, VA.
 CONTRACT NO. BKC-3555 (241) 341.62-2
 SAVANNAH RIVER PLANT
 200 AREA BLDG. 241F11
 VERTICAL COOLING COILS
 WASTE STORAGE TANK
 ENGINEERING DOC. CONTROL - 885
 0014543