

ITAAC Closure Verification Process

October 7, 2010

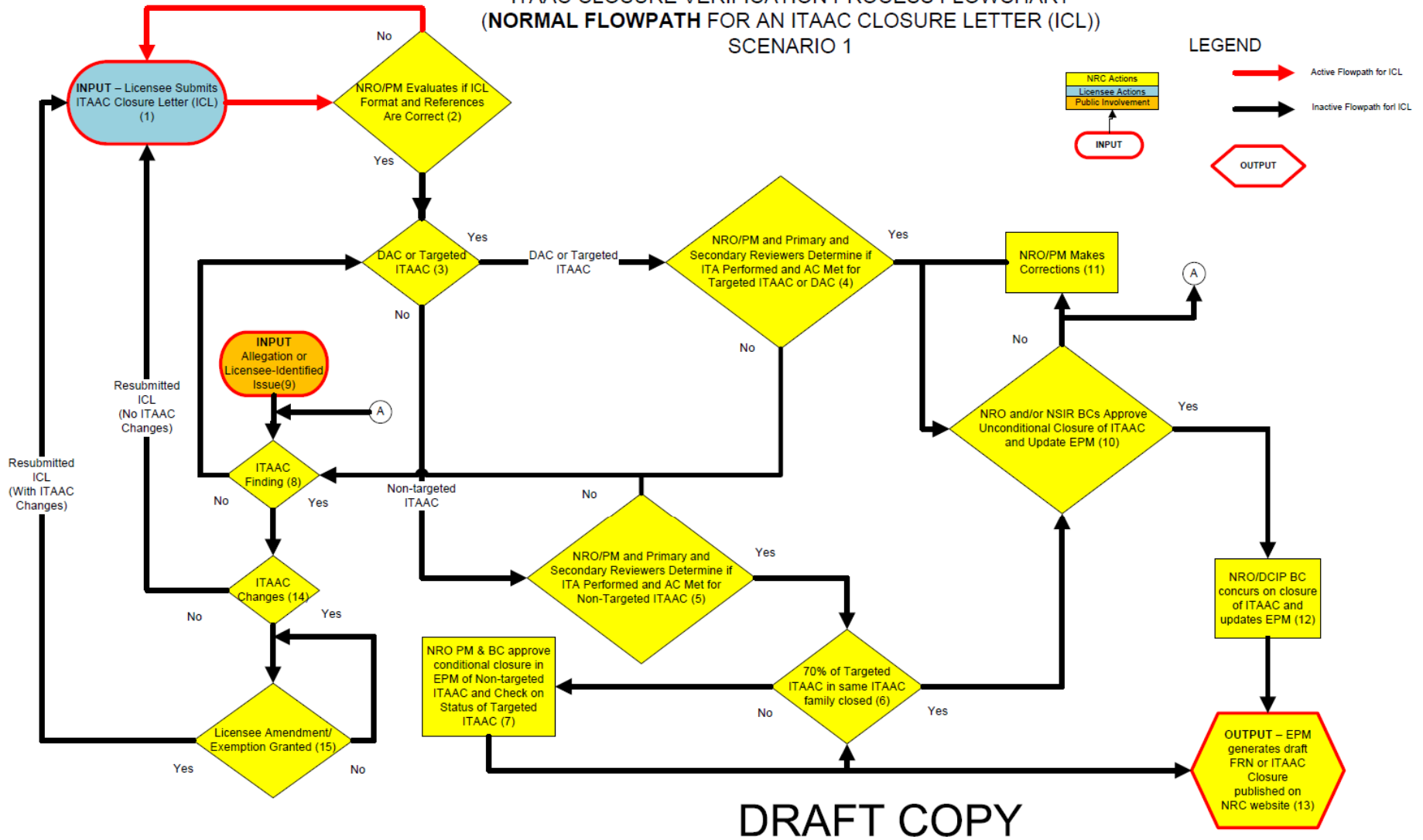
Edmund Kleeh, PE
Construction ITAAC Team
NRO/DCIP/CTSB

ITAAC Closure Verification Scenario Ground Rules

- The following example scenarios were created to illustrate the process by which the NRC staff will verify closure of a licensee's ITAAC.
- They are intended to focus on the **process** of ITAAC closure, not on the numerous flavors a given scenario could have.
- The Flowcharts & Office Instruction are still in draft form



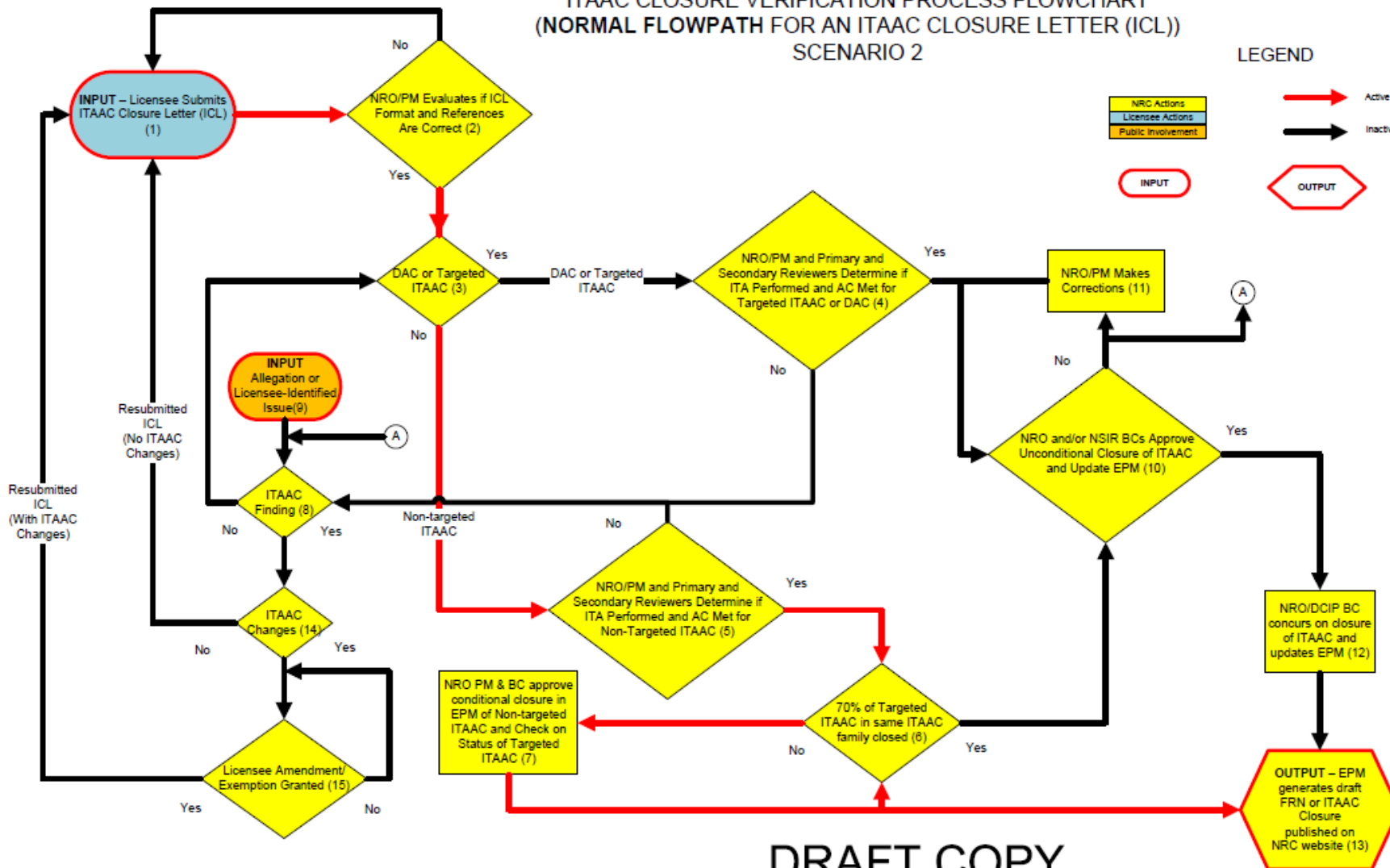
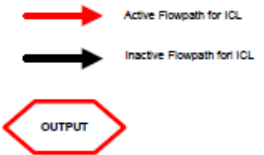
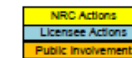
**ITAAC CLOSURE VERIFICATION PROCESS FLOWCHART
(NORMAL FLOWPATH FOR AN ITAAC CLOSURE LETTER (ICL))
SCENARIO 1**



DRAFT COPY

ITAAC CLOSURE VERIFICATION PROCESS FLOWCHART (NORMAL FLOWPATH FOR AN ITAAC CLOSURE LETTER (ICL)) SCENARIO 2

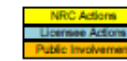
LEGEND



DRAFT COPY

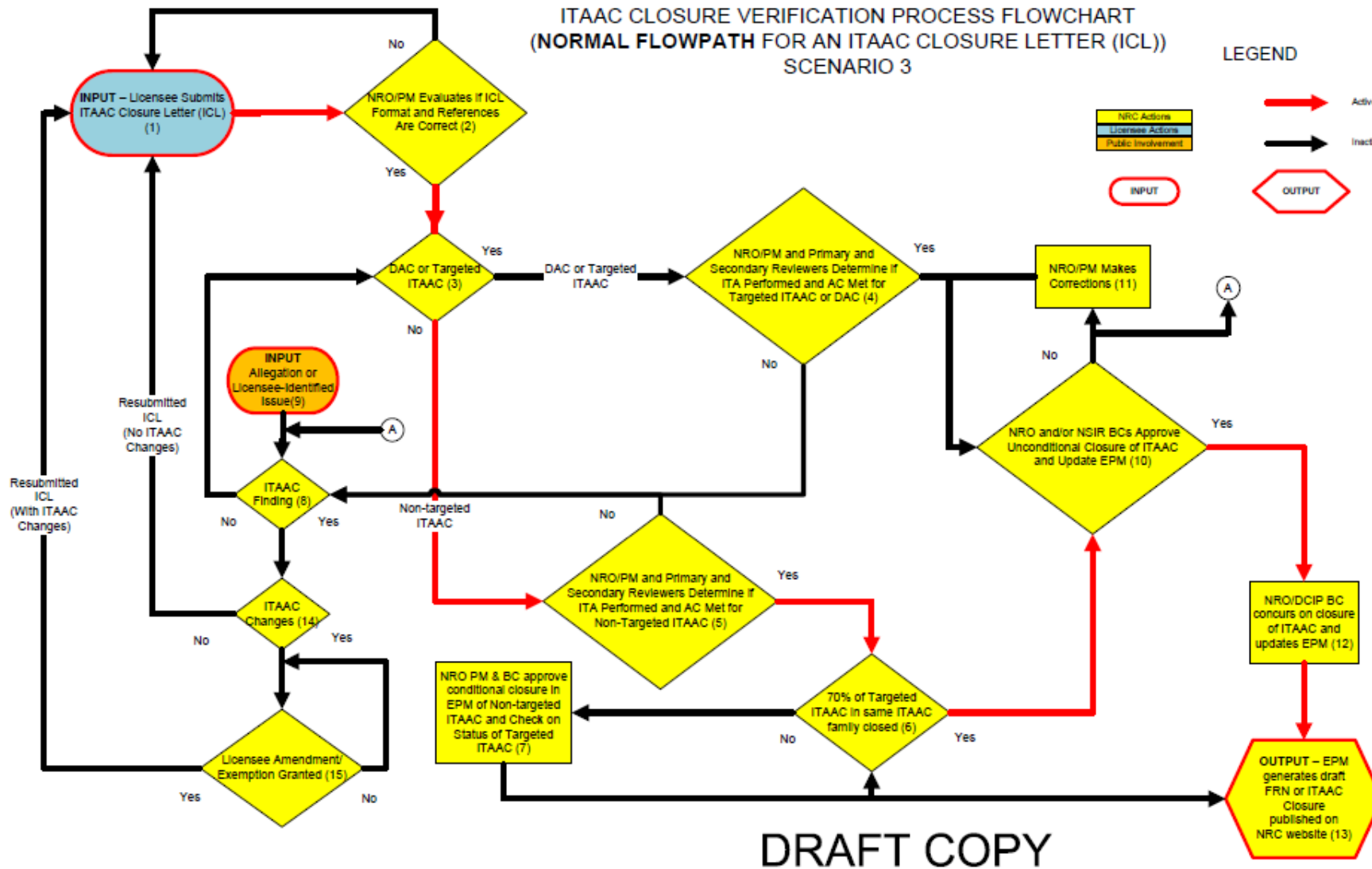
ITAAC CLOSURE VERIFICATION PROCESS FLOWCHART (NORMAL FLOWPATH FOR AN ITAAC CLOSURE LETTER (ICL)) SCENARIO 3

LEGEND



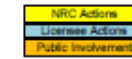
→ Active Flowpath for ICL

→ Inactive Flowpath for ICL



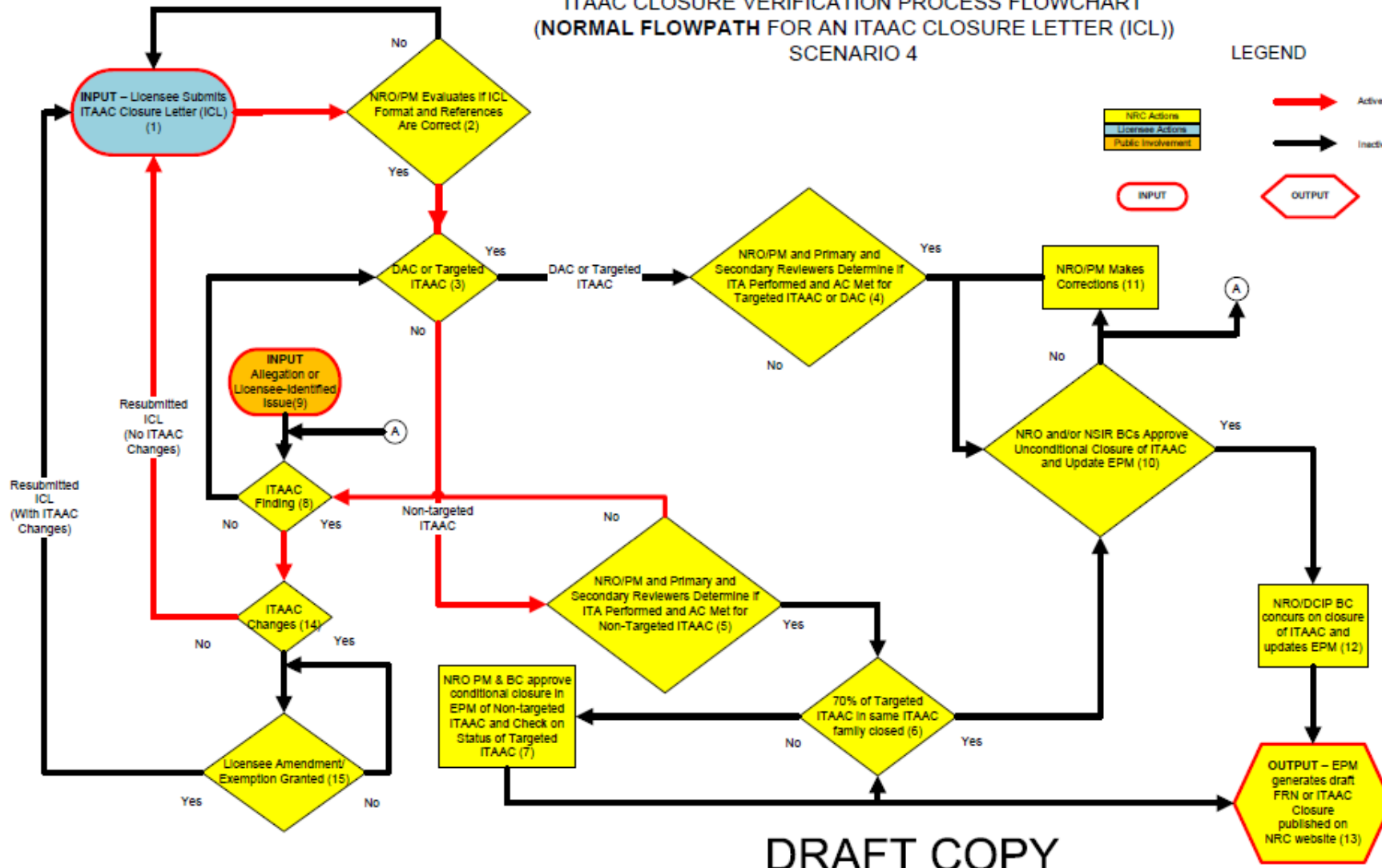
**ITAAC CLOSURE VERIFICATION PROCESS FLOWCHART
(NORMAL FLOWPATH FOR AN ITAAC CLOSURE LETTER (ICL))
SCENARIO 4**

LEGEND



Red arrow → Active Flowpath for ICL

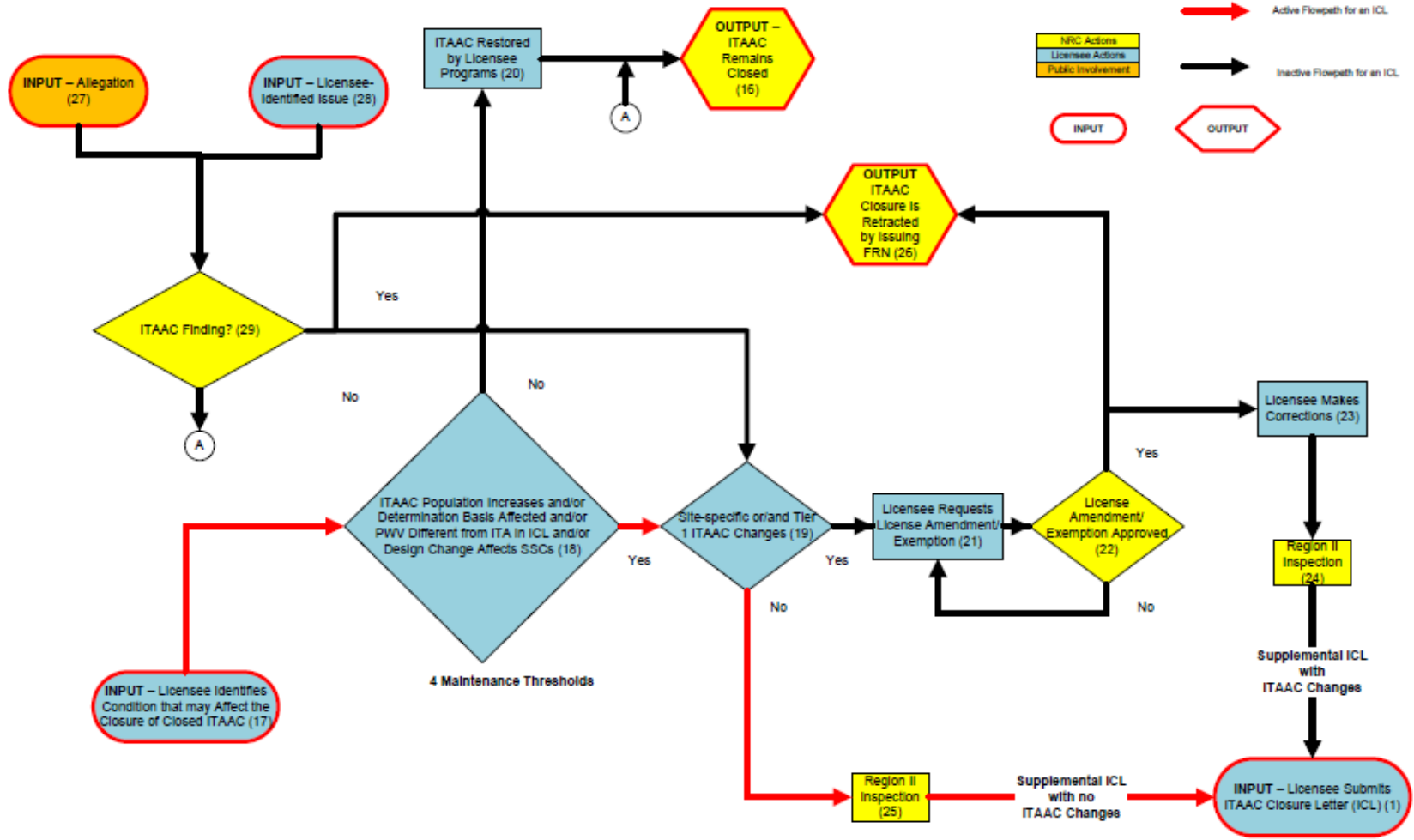
Black arrow → Inactive Flowpath for ICL



DRAFT COPY

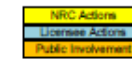
**ITAAC CLOSURE VERIFICATION PROCESS FLOWCHART
(ALTERNATE FLOWPATHS FOR AN ITAAC CLOSURE LETTER (ICL))
SCENARIO 5**

LEGEND



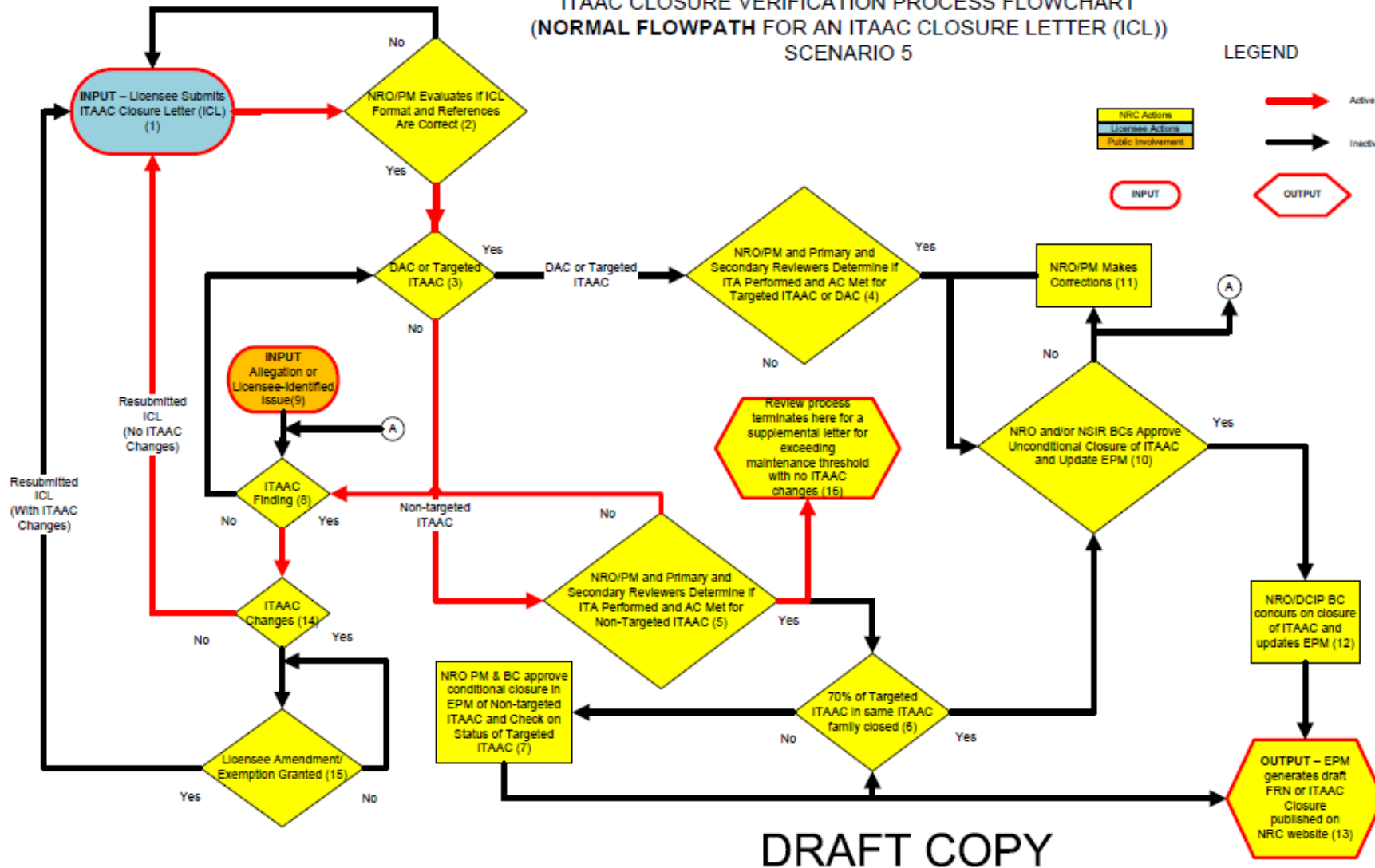
ITAAC CLOSURE VERIFICATION PROCESS FLOWCHART (NORMAL FLOWPATH FOR AN ITAAC CLOSURE LETTER (ICL)) SCENARIO 5

LEGEND



→ Active Flowpath for ICL

→ Inactive Flowpath for ICL



DRAFT COPY

**ITAAC CLOSURE VERIFICATION PROCESS FLOWCHART
(ALTERNATE FLOWPATHS FOR AN ITAAC CLOSURE LETTER (ICL))
SCENARIO 6**

LEGEND

