

Turkey Point Units 6 & 7  
COL Application  
Part 3 — Environmental Report

**SECTION 2.1: STATION LOCATION**

2.1 STATION LOCATION .....2.1-1  
Section 2.1 References .....2.1-2

Turkey Point Units 6 & 7  
COL Application  
Part 3 — Environmental Report

**SECTION 2.1 LIST OF FIGURES**

- 2.1-1 Turkey Point Site
- 2.1-2 Oblique Aerial Photograph of Turkey Point Plant Property
- 2.1-3 6-Mile Vicinity
- 2.1-4 50-Mile Region

Turkey Point Units 6 & 7  
COL Application  
Part 3 — Environmental Report

2.1 STATION LOCATION

FPL proposes to construct and operate two Westinghouse AP1000 units at the existing approximately 11,000-acre Turkey Point plant property in southeast Miami-Dade County, Florida. The two AP1000 reactors would be referred to as Units 6 & 7. This section describes the general location of the Turkey Point plant property and the Units 6 & 7 plant area.

Units 6 & 7 and supporting infrastructure would be located in the approximately 218-acre plant area delineated in [Figure 2.1-1](#). The center point of the Unit 6 containment building would be approximately 215 feet west and 3625 feet south of the center point of the Unit 4 containment building. The center point of Unit 7 would be approximately 850 feet west of the center point of Unit 6. Unit 5 is located northwest of Units 1 through 4 and is independently cooled through the use of cooling towers. Units 1 through 4 use the cooling canals of the industrial wastewater facility for heat removal and are located at the northern boundary of the industrial wastewater facility. Units 6 & 7 would be located within the northeast corner of the industrial wastewater facility on an area surrounded by canals, referred to as the Units 6 & 7 plant area, just south of Units 1 through 5. The Units 6 & 7 containment buildings would be located at the following coordinates:

**Coordinate System**

Geographic, Decimal Degrees, North American Data 1983 (NAD83)		
Unit 6	25.424186 N	-80.331961 W
Unit 7	25.424186 N	-80.334536 W
Universal Transverse Mercator Zone 17, Meters, NAD83		
Unit 6	2812086.79 N	567179.31 E
Unit 7	2812086.79 N	566920.31 E
Florida State Plane East, U.S. Feet, NAD83		
Unit 6	396968 N	876646 E
Unit 7	396968 N	875796 E

The Turkey Point plant property is on the southeastern coast of Florida, bordering Biscayne Bay and Card Sound, in unincorporated southeast Miami-Dade County. It is located in all or portions of Sections 17, 18, 19, 20, 27, 28, 29, 30, 31, 32, 33, and 34 of Township 57S, Range 40E and Sections 4, 5, 7, 8, 9, 16, 17, 18, 19, 20, 21, 28, 29, and 30 of Township 58S Range 40E. The Units 6 & 7 plant area would be located in portions of Sections 33 and 34 of Township 57S, Range 40E. The only existing access to the plant property is from SW 344th Street/Palm Drive as shown on [Figure 2.1-1](#).

The Turkey Point plant property is approximately 25 miles south of Miami, 8 miles east of Florida City, and 4.5 miles east of the southeastern municipal limits of Homestead. The property is approximately 2 miles south of the Biscayne National Park Visitors Center and is within 3 miles of

Turkey Point Units 6 & 7  
COL Application  
Part 3 — Environmental Report

the South Florida Water Management District conservation area (Model Lands Basin). A portion of the Biscayne Bay Aquatic Preserve runs along the coastal boundary of the Turkey Point plant property. The Homestead Bayfront Park lies approximately 1.5 miles north of Units 6 & 7, and 1.5 miles east of the L-31E canal. In addition, the plant property is adjacent to the 13,000-acre Everglades Mitigation Bank, owned by FPL. The exclusion area boundary for Units 3 & 4 is irregularly shaped, with a distance from the center of the existing Units 3 & 4 containment buildings of 4164 feet to the northern property line, 5582 feet to the southern property line, and a minimum distance of 1800 feet. The exclusion area boundary for Units 6 & 7 would be irregularly shaped, with a minimum distance from the center point of the Units 6 & 7 containment buildings of 1927 feet in the east to northeast direction.

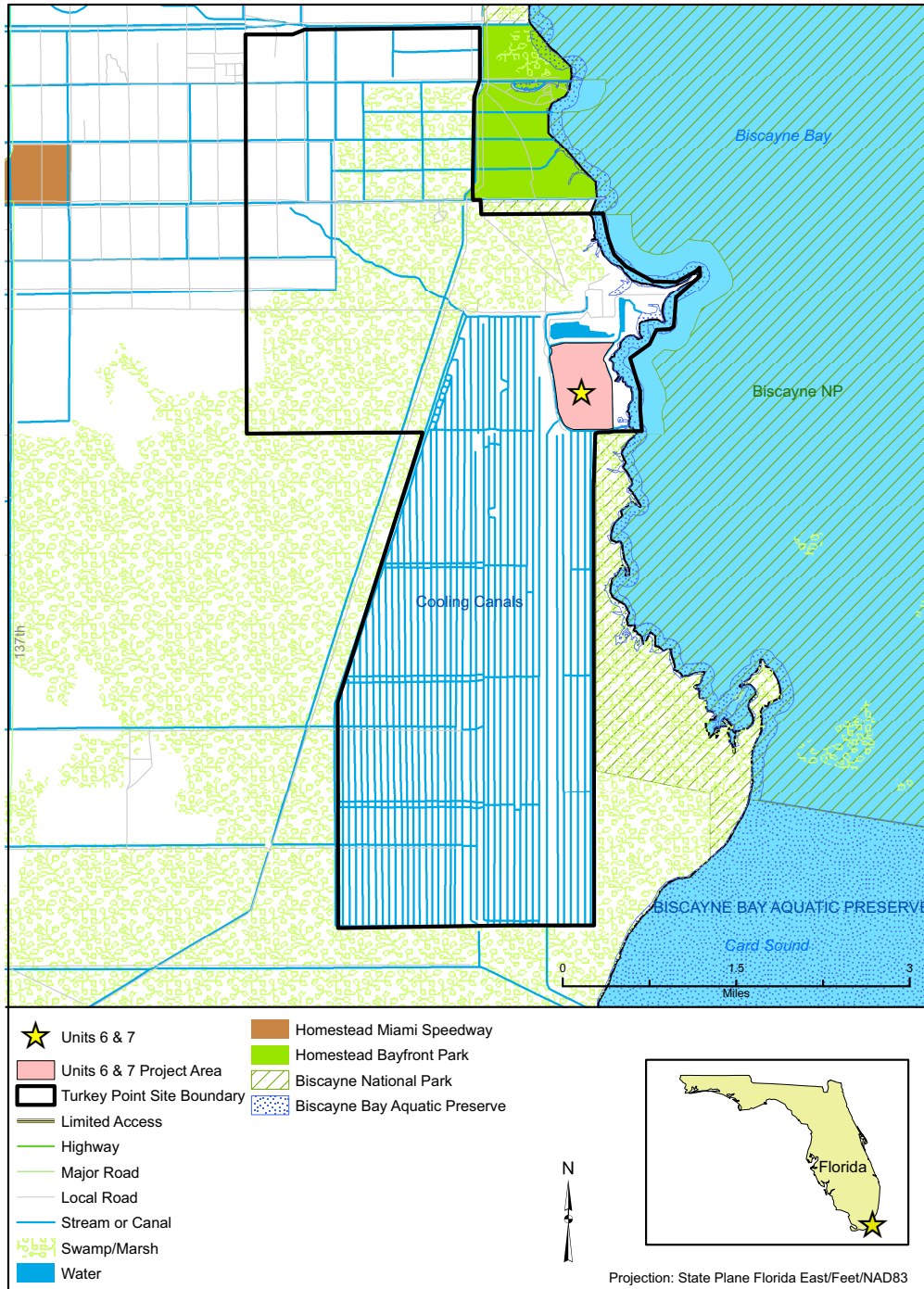
Within Miami-Dade County, Homestead is the closest major population center to Units 6 & 7, with 31,909 residents during the 2000 census (USCB 2000). The distance to the center of the city of Miami (the nearest major city) is approximately 25 miles. The Homestead/Miami Speedway is located approximately 5 miles northwest of the Turkey Point plant property. Homestead Air Reserve Base, with both civilian and military operations, is approximately 4.5 miles northwest of the plant area. Miami International Airport is approximately 25 miles north of the plant property. There are no rail systems within 5 miles of the Turkey Point plant property (Figure 2.1-3). The Port of Miami is approximately 26 miles from the plant area. Key Largo is approximately 23 miles from the plant area. Figures 2.1-2, 2.1-3, and 2.1-4 provide, respectively, an oblique aerial photograph of the Turkey Point plant property, a map of the vicinity within 6 miles of Units 6 & 7, and a map of the region within 50 miles of Units 6 & 7.

## Section 2.1 References

USCB 2000. U.S. Census Bureau, *P1 Total Population [1]-Universe: Total Population Data Set: Census 2000 Summary File 1 (SF 1) 100-Percent Data*. Available at [www.factfinder.gov](http://www.factfinder.gov), accessed June 5, 2008.

Turkey Point Units 6 & 7  
 COL Application  
 Part 3 — Environmental Report

**Figure 2.1-1 Turkey Point Site**



Turkey Point Units 6 & 7  
COL Application  
Part 3 — Environmental Report

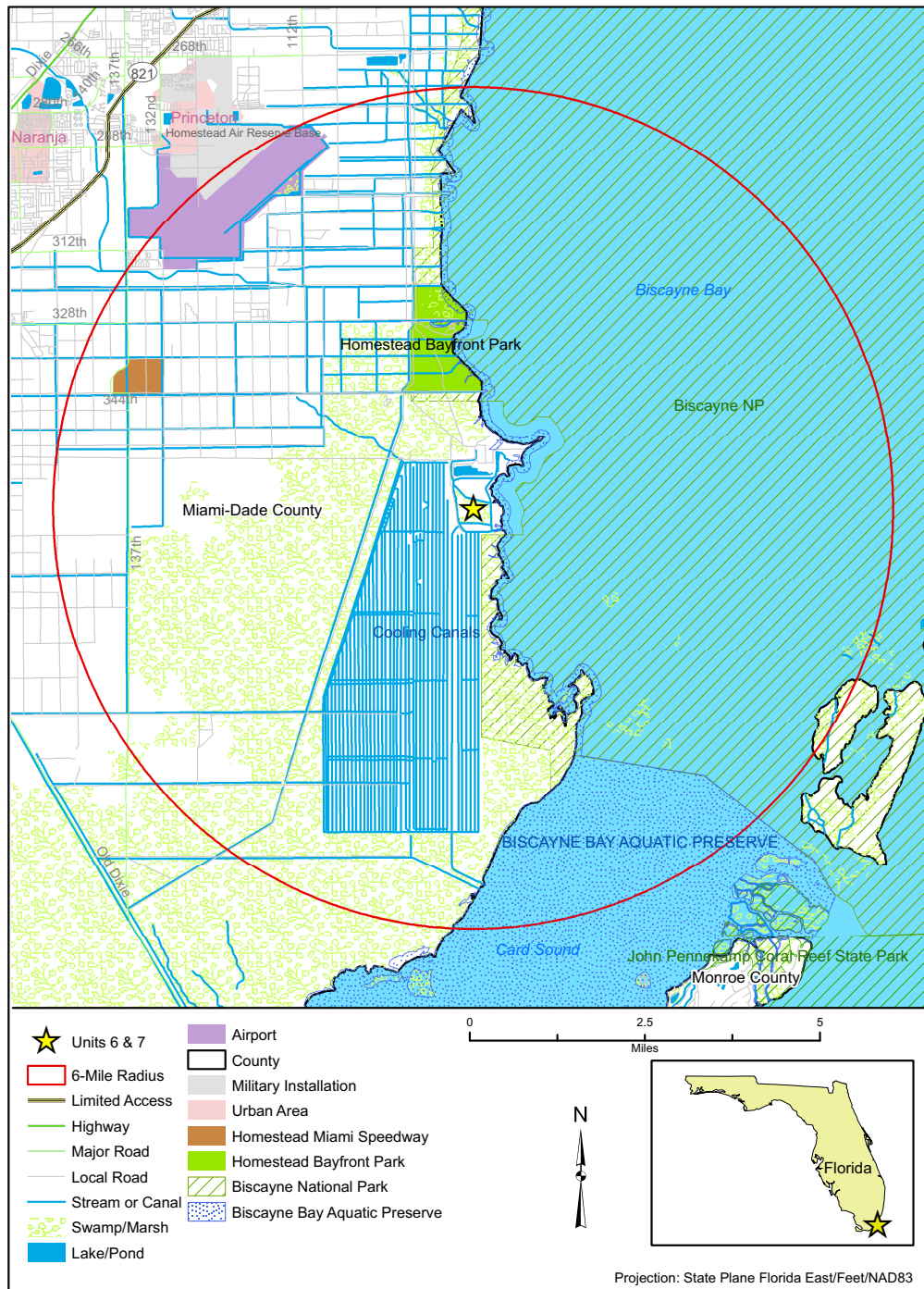
**Figure 2.1-2 Oblique Aerial Photograph of Turkey Point Plant Property**



Looking west, Units 6 & 7 plant area shown to left, Units 1–5 shown to right

Turkey Point Units 6 & 7  
 COL Application  
 Part 3 — Environmental Report

**Figure 2.1-3 6-Mile Vicinity**



Turkey Point Units 6 & 7  
 COL Application  
 Part 3 — Environmental Report

Figure 2.1-4 50-Mile Region

