



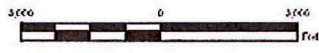
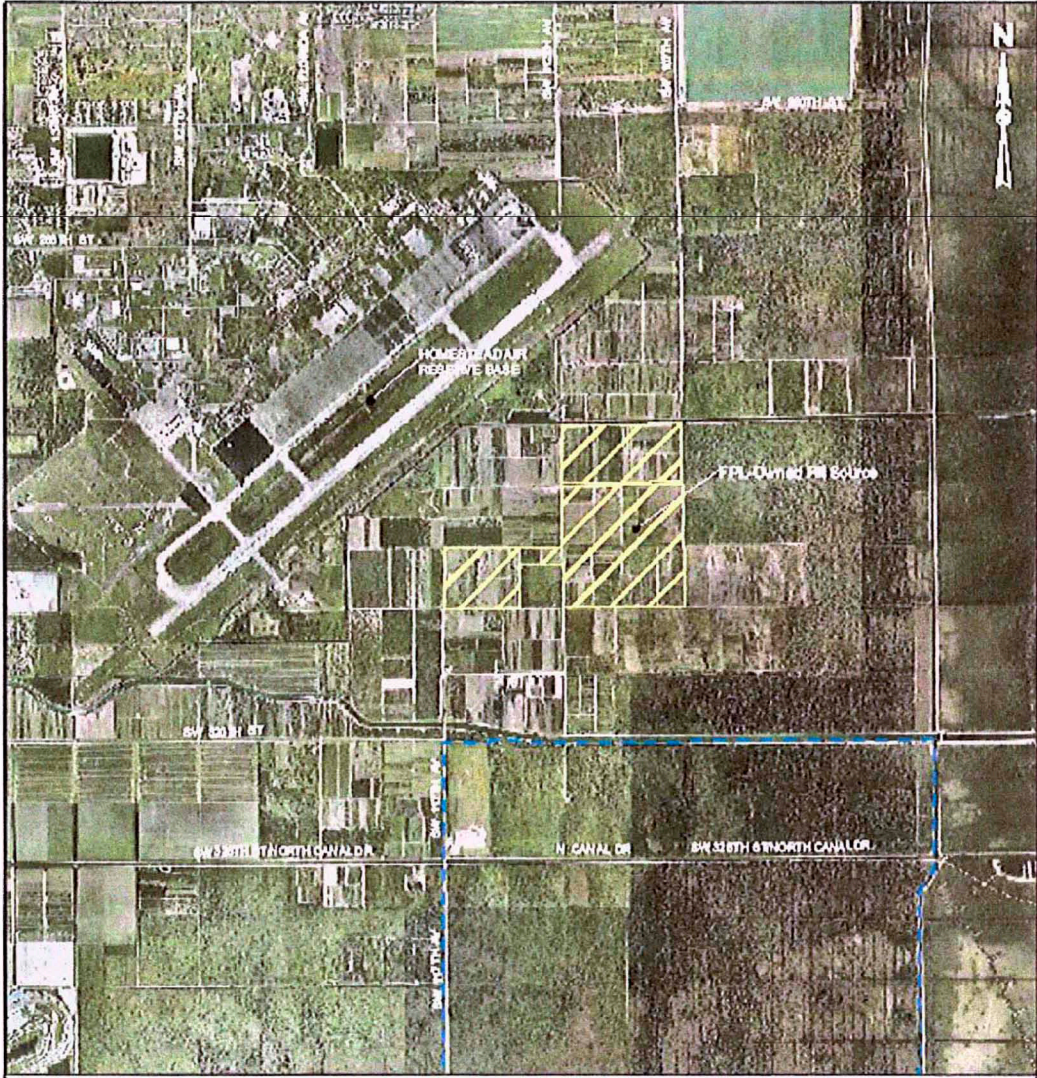
LEGEND

- Turkey Point Plant Property
- Turkey Point Units 6 & 7 Site
- Associated Non-Linear Facilities

REFERENCES

1. Ingey, ManOaks County, 2007.

PROJECT	TURKEY POINT UNITS 6 & 7 PROJECT						
TITLE	SITE AND ASSOCIATED NON-LINEAR FACILITIES ON TURKEY POINT PLANT PROPERTY						
	<table border="1" style="width: 100%; border-collapse: collapse;"> <tr> <td style="width: 30%;">DATE</td> <td>06/27/2008</td> </tr> <tr> <td>REV.</td> <td>0</td> </tr> <tr> <td>PLC DATE</td> <td>08/02/08</td> </tr> </table>	DATE	06/27/2008	REV.	0	PLC DATE	08/02/08
DATE	06/27/2008						
REV.	0						
PLC DATE	08/02/08						
	FIGURE 2						



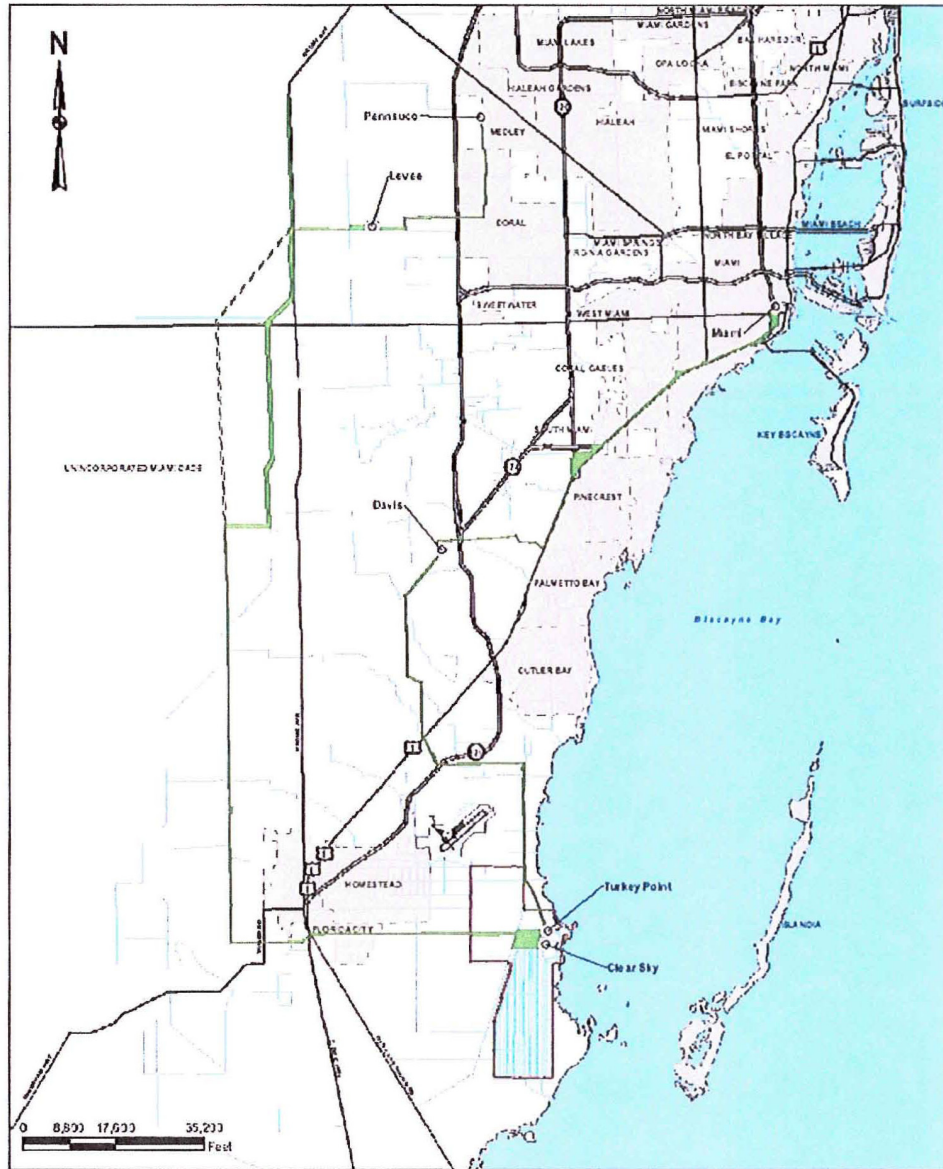
LEGEND

- Turkey Point Plant Property
- Associated Non-Linear Facilities

REFERENCES

1. Turkey, Man & the Coast, 2007.

PROJECT	TURKEY POINT UNITS 6 & 7 PROJECT	
TITLE	ASSOCIATED NON-LINEAR FACILITIES FPL-OWNED FILL SOURCE	
	FILE NO.	600000000
	FIG. NO.	0
	PLANT NAME	6000000
		FIGURE 3



LEGEND

- FPL Substations
- ▬ Associated Linear Facilities - Transmission Lines and Corridors
- ▬ Secondary Corridor
- ▭ Turkey Point Plant Property

REFERENCES

1. All data obtained from: City of Miami, March 16, 2006

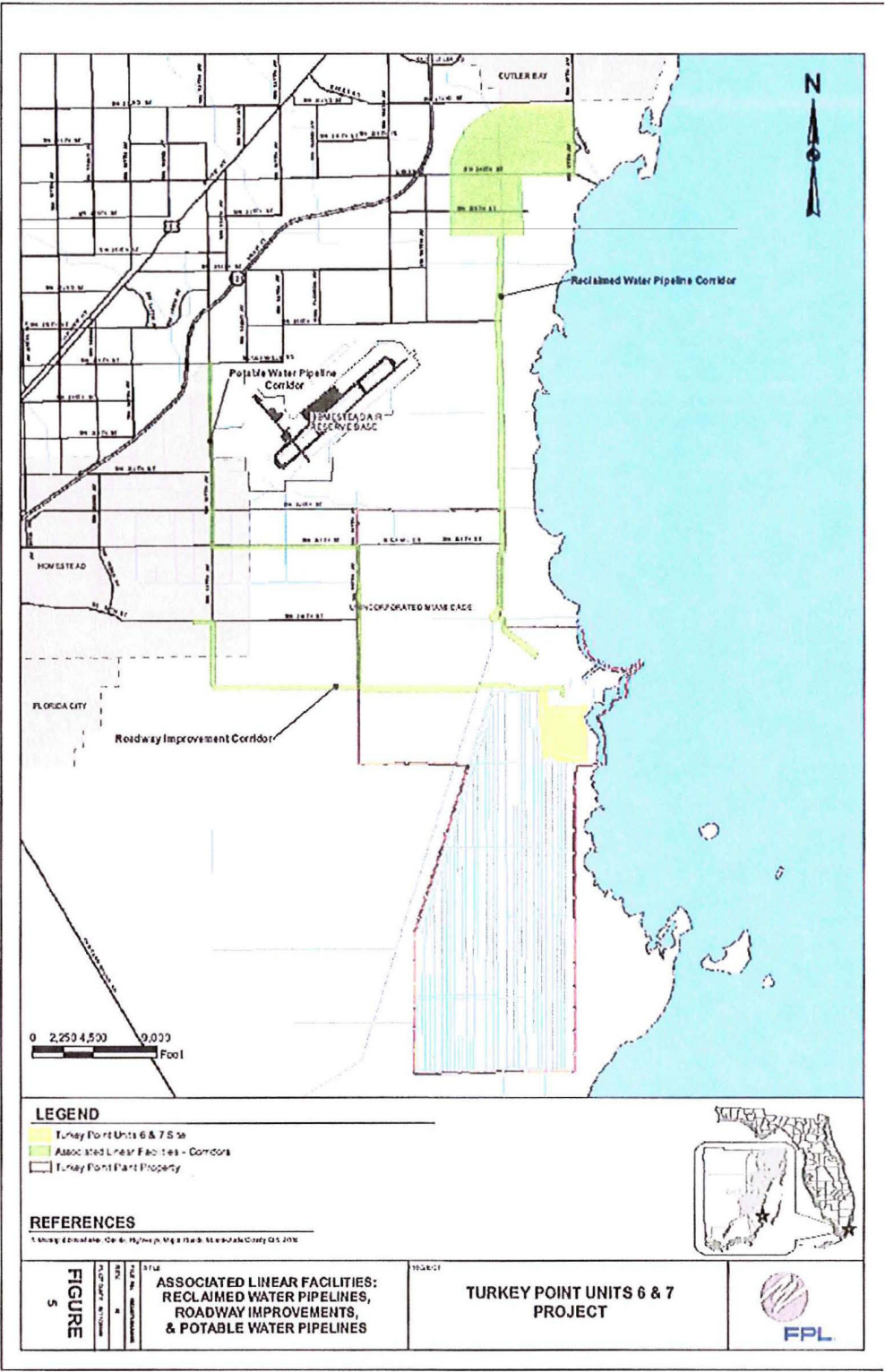


FIGURE
4

ASSOCIATED LINEAR FACILITIES TRANSMISSION

TURKEY POINT UNITS 6 & 7 PROJECT





- LEGEND**
- Turkey Point Units 6 & 7 S&B
 - Associated Linear Facilities - Corridors
 - Turkey Point Plant Property

REFERENCES
 1. Mapy Edinburo: 06.06.1970 (p. 16) (Scale: 1:50,000) (Date: 05.2016)



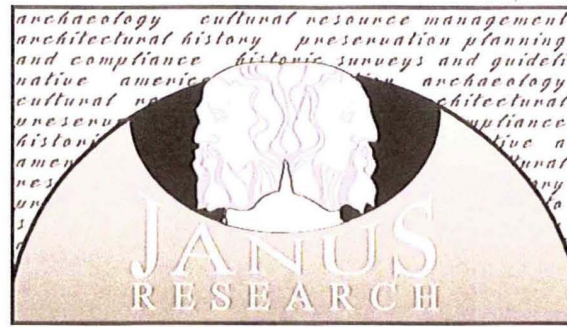
FIGURE 5

ASSOCIATED LINEAR FACILITIES: RECLAIMED WATER PIPELINES, ROADWAY IMPROVEMENTS, & POTABLE WATER PIPELINES

TURKEY POINT UNITS 6 & 7 PROJECT



JANUS MAIN OFFICE
1107 N. Ward Street
Tampa, FL 33607



Tel. 813.636.8200
Fax 813.636.8212
janus@janus-research.com

Tampa Bay ▪ Miami ▪ Ft. Myers ▪ Atlanta

Joyce Bear
Cultural Preservation Manager
Muscogee (Creek) Nation
P.O. Box 580
Okmulgee, OK 74447

JSRMNT-09-0718
December 16, 2009

SUBJECT: Information Sharing Supporting Section 106 of the *National Historic Preservation Act* for the Proposed Turkey Point Units 6 & 7 On-Site Project Facilities, Florida

Dear Mrs. Bear:

Florida Power and Light Company (FPL) has submitted a Combined Operating License (COL) Application to the Nuclear Regulatory Commission (NRC) to construct and operate nuclear power Unit 6 & 7 at the Turkey Point site, located east of Homestead, Florida. The Unit 6 & 7 project would provide clean, safe and reliable power to meet the needs of FPL's customers. As part of its COL Application, FPL included an environmental report to assist the NRC prepare an environmental impact statement (EIS) under the *National Environmental Policy Act*. The decision by the NRC on whether to issue the license for construction and operation of Units 6 & 7 meets the definition of an "undertaking" under the *National Historic Preservation Act* (NHPA) and its implementing regulations 36 CFR Part 800.16(y).

FPL has shared project information with the Florida Division of Historical Resources (DHR) and the Florida State Historic Preservation Officer for this proposed project. Specifically a final cultural resources assessment (CRA) report of on-site areas and associated non-linear facilities and a preliminary CRA report on the associated linear facilities were submitted to the DHR as part of FPL's Site Certification Application (SCA).

By recommendation from the DHR, FPL hereby offers to share project information with potentially interested Tribes to assist us in identifying important cultural resources that could be present in the vicinity of the proposed undertaking. Attached is the CRA report addressing the on-site areas and other non-linear associated facilities affected by the proposed undertaking. Linear facilities (namely access roads, transmissions lines, and water pipelines) are being permitted as corridors in the SCA process. Therefore, the CRA report for the project's linear facilities will be shared with you after placement of those facilities is finalized.



Description of the Proposed Project

The project would add two new nuclear generating units and supporting facilities at a site within the existing Turkey Point plant property boundaries. The Project includes the construction and operation of Turkey Point Unit 6 & 7 on the site as well as new transmission lines and other off-site associated linear and non-linear facilities.

FPL's Turkey Point plant property comprises approximately 11,000 acres in unincorporated southeast Miami-Dade County, Florida, east of Florida City and the City of Homestead, and bordered by Biscayne Bay to the east. The existing Turkey Point Plant consist of two nominal 400-megawatt (MW) natural gas/oil steam electric generating units (Units 1 & 2); two nominal 700-MW nuclear units (Units 3 & 4); and a nominal 1,150 MW natural gas-fired combined-cycle unit (Unit 5). The existing closed-loop cooling canals and industrial wastewater facility occupy approximately 5,900 acres. The location of the Turkey Point plant property is shown in Figure 1.

The site for Turkey Point Units 6 & 7 is south of Units 3 & 4 and occupies approximately 300-acres within the industrial wastewater facility. Two nuclear generating units, each with an approximate electrical out put of 1,100 MWe (net), including supporting buildings, facilities and equipment will be located on the site, along with a laydown area. Proposed off-site associated facilities include: nuclear administration building, training building and parking area; an FPL reclaimed water treatment facility and reclaimed water pipelines; radial collector wells and delivery pipelines; equipment barge unloading area; an FPL-owned fill source; transmission lines and system improvements within Miami-Dade County; access roads and bridges; and a potable water pipeline. The site and proposed off-site associated facilities are shown in Figures 2 to 5. Because the linear facilities are being permitted as corridors, the areas shown on these figures is actually larger than the areas that will be impacted by actual construction and operation of the linear facilities.

Information Sharing with the Florida Division of Historical Resources

On February 20, 2009, FPL notified the DHR that it was commencing a CRA of on-site areas and would be contacting the SHPO to obtain required information as needed. On June 25, 2009, FPL forwarded to DHR its CRA survey work plans for the on- and off-site project areas. In that submittal, FPL requested concurrence that (1) the determination and definition of the Areas of Potential Effect (APEs) are appropriate for the project and (2) implementation of the work plans would constitute a reasonable and good-faith effort to carry out appropriate identification efforts of historic properties that could potentially be impacted by the project. On July 13, 2009, the DHR concurred with all the recommendations provided by FPL in the on-and off-site CRA survey work plans. The DHR recommended that the final CRA survey results be sent to the five federally-recognized tribes with cultural affiliation to Florida.

On June 30, 2009, as part of the Site Certification Application, FPL submitted its final CRA report of on-site areas and associated non-linear facilities and the preliminary CRA report on the associated linear facilities to the DHR. On July 10, 2009, DHR found FPL's final CRA



report of on-site areas and associated non-linear facilities complete and sufficient in accordance with Chapter 1A-46 F.A.C. The DHR offered its opinion that the project would have no effect on historic properties and recommended that the CRA report of on-site areas and associated non-linear facilities be sent to the five federally recognized tribes with cultural affiliation to Florida.

Information Sharing with Potentially Interested Tribes

The purpose of this letter is to share information with potentially interested Tribes in accordance with Section 106 of the NHPA and 36 CFR Part 800.2(c)(2)(ii). The NRC will conduct formal NHPA consultation with Tribes per Federal government-to-government guidance during the preparation of the environmental impact statement. However both the NRC and the DHR have encouraged FPL to share information with Tribes to identify tribal concerns for important cultural resources that could potentially be impacted by the proposed project. On March 20, 2009, Janus Research, on behalf of FPL, submitted a letter to the Muscogee (Creek) Nation sharing initial project information.

FPL welcomes your input and comments on the proposed undertaking and the cultural properties of importance to you. FPL is requesting your review of this information so that you can identify concerns about cultural resources, present views about the proposed undertaking's potential effects on such properties, and participate in the resolution of adverse effects. FPL is particularly interested in any information you may have regarding resources, traditional cultural places, sites, or properties of tribal importance that may be adversely affected by the proposed project. This information will assist FPL in identifying important cultural resources in the project area. FPL requests a written response to this information review by January 29, 2010.

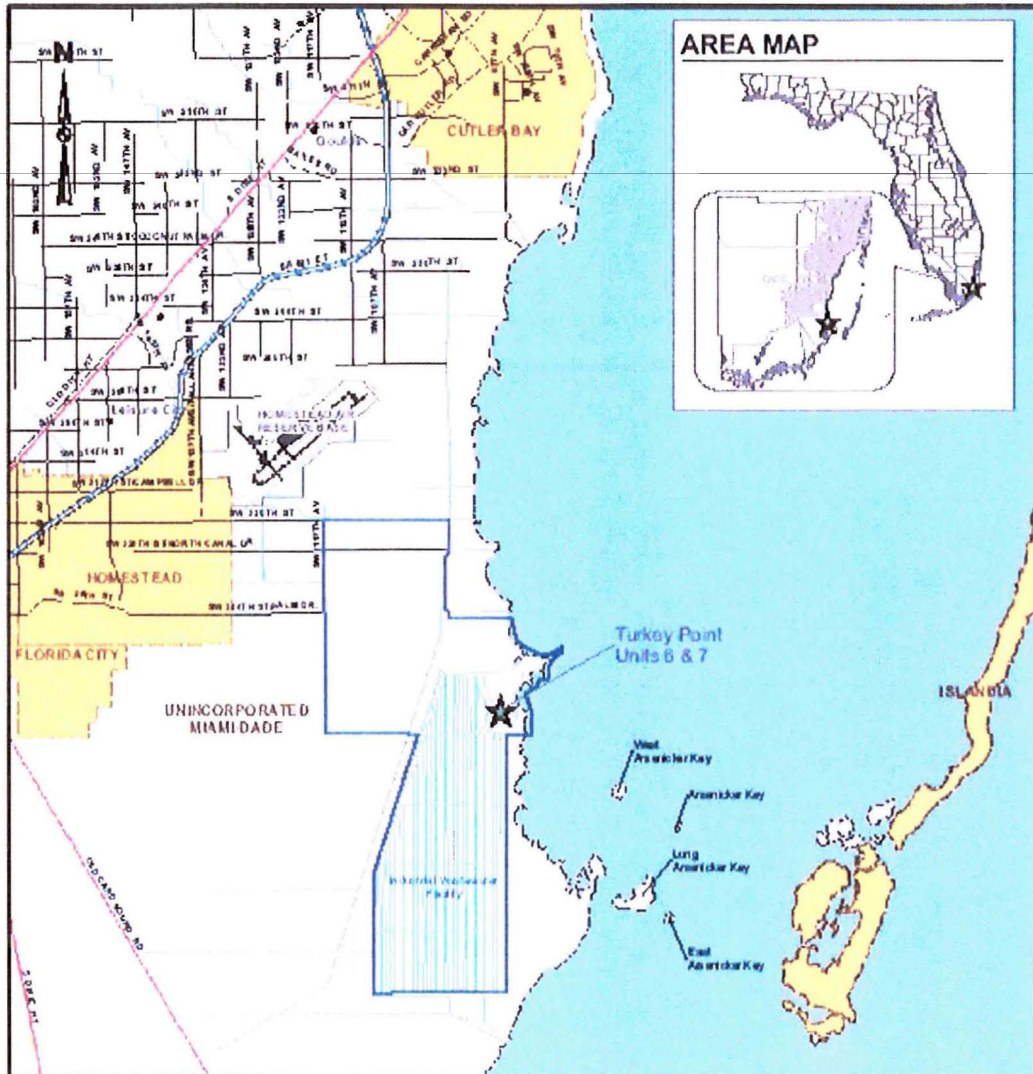
Mr. Matthew Raffenberg is FPL's environmental permitting lead and will be your contact for this information sharing request. Please reach Mr. Raffenberg at (561) 691-2808 or by email matthew.raffenberg@fpl.com if you have any questions about this information.

Sincerely,

Kathleen S. Hoffman, Ph.D.

Vice-President

cc: Mike Halpin, FDEP Siting Office
Laura Kammerer, Florida Division of Historical Resources
Matthew Raffenberg, FPL




LEGEND

- ★ Turkey Point Units 6 & 7
- ▭ Turkey Point Plant Property
- ▭ Municipal Boundaries

REFERENCES

* Local City Boundaries: Municipal Boundaries; Major Roads: Miami-Dade County GIS 2005



PROJECT	TURKEY POINT UNITS 6 & 7 PROJECT	
TITLE	LOCATION OF TURKEY POINT PLANT	
	FILE NO.	000000000
	REV.	0
	PLotted BY	01/00/00
		FIGURE 1