

**CHAPTER 13: CONDUCT OF OPERATIONS
TABLE OF CONTENTS**

CHAPTER 13 CONDUCT OF OPERATIONS	13.1-1
13.1 ORGANIZATIONAL STRUCTURE OF APPLICANT	13.1-1
13.1.1 MANAGEMENT AND TECHNICAL SUPPORT ORGANIZATION	13.1-1
13.1.1.1 Design, Construction, and Operating Responsibilities	13.1-1
13.1.1.2 Provisions for Technical Support Functions	13.1-2
13.1.1.3 Organizational Arrangement	13.1-10
13.1.1.4 Qualifications of Technical Support Personnel	13.1-16
13.1.2 OPERATING ORGANIZATION	13.1-16
13.1.2.1 Plant Organization	13.1-16
13.1.3 QUALIFICATION REQUIREMENTS OF NUCLEAR PLANT PERSONNEL	13.1-31
13.1.3.1 Minimum Qualification Requirements	13.1-31
13.1.3.2 Qualification Documentation	13.1-31
13.1.4 COMBINED LICENSE INFORMATION ITEM	13.1-31
13.1.5 REFERENCES	13.1-31
13.2 TRAINING	13.2-1
13.2.1 COMBINED LICENSE INFORMATION ITEM	13.2-1
13.2.2 REFERENCES	13.2-1
13.3 EMERGENCY PLANNING	13.3-1
13.3.1 COMBINED LICENSE INFORMATION ITEM	13.3-1
13.4 OPERATIONAL PROGRAMS	13.4-1
13.4.1 COMBINED LICENSE INFORMATION ITEM	13.4-1
13.4.2 REFERENCES	13.4-1
13.5 PLANT PROCEDURES	13.5-1
13.5.1 ADMINISTRATIVE PROCEDURES	13.5-1
13.5.2 OPERATING AND MAINTENANCE PROCEDURES	13.5-3
13.5.2.1 Operating and Emergency Operating Procedures	13.5-3
13.5.2.2 Maintenance and Other Operating Procedures	13.5-4
13.5.3 COMBINED LICENSE INFORMATION ITEM	13.5-6
13.5.4 REFERENCES	13.5-6
13.6 SECURITY	13.6-1
13.6.1 COMBINED LICENSE INFORMATION ITEMS	13.6-1
13.6.2 REFERENCES	13.6-2
13.7 FITNESS FOR DUTY	13.7-1
13.7.1 REFERENCES	13.7-1
APPENDIX 13AA CONSTRUCTION-RELATED ORGANIZATION	13AA-1

CHAPTER 13 LIST OF TABLES

<u>Number</u>	<u>Title</u>
13.1-201	Generic Position/Site-Specific Position Cross Reference
13.1-202	Minimum On-Duty Operations Shift Organization for Two-Unit Plant
13.4-201	Operational Programs Required by NRC Regulations
13.5-201	Pre-COL Phase Administrative Programs and Procedures

CHAPTER 13 LIST OF FIGURES

<u>Number</u>	<u>Title</u>
13.1-201	Plant Management Organization
13.1-202	Shift Operations Organization
13.1-203	Corporate and Engineering Organization
13AA-201	Construction Management Organization
13AA-202	Hiring Schedule for Plant Staff

CHAPTER 13 CONDUCT OF OPERATIONS

13.1 ORGANIZATIONAL STRUCTURE OF APPLICANT

This **section** of the referenced DCD is incorporated by reference, with the following departures and/or supplements.

STD DEP 1.1-1 **DCD Subsection 13.1.1**, Combined License Information, is renumbered in this FSAR section to **Section 13.1.4**.

PTN COL 13.1-1 This section describes organizational positions of a nuclear power unit and owner/applicant corporations and associated functions and responsibilities.

Table 13.1-201, Generic Position/Site Specific Position Cross Reference, provides a cross-reference to identify the corresponding generic position titles.

13.1.1 MANAGEMENT AND TECHNICAL SUPPORT ORGANIZATION

FPL has more than 35 years of experience in the design, construction, and operation of nuclear generating units. The FPL Nuclear Fleet Organization operates 10 nuclear units at five sites: Duane Arnold, Seabrook, Turkey Point Units 3 & 4 and 6 & 7, Saint Lucie Units 1 & 2, and Point Beach Units 1 & 2. The Nuclear Fleet Organization includes, but is not limited to, nuclear extended power uprate, nuclear operations, nuclear fleet support, engineering support, fleet outages planning and execution, and nuclear assurance.

13.1.1.1 Design, Construction, and Operating Responsibilities

The NextEra Energy chairman and chief executive officer (CEO) has overall responsibility for corporate policy, provides executive direction and guidance for the corporation, and promulgates corporate policy through the company's senior management staff. The NextEra Energy president and chief operating officer promulgates corporate policy and provides corporate direction to the executive vice president and chief nuclear officer, and to other members of the senior management staff. Line responsibilities for implementing policies and direction are assigned to the executive vice president—engineering, construction and corporate services, and to the executive vice president and chief nuclear officer. The executive vice president—engineering, construction and corporate services directs the vice president—new nuclear projects in the design and construction of new

nuclear plant generation. The executive vice president and chief nuclear officer directs the regional vice presidents—nuclear fleet operations, the vice president—fleet support, the vice president—nuclear engineering support, the vice president—extended power uprate, the vice president—fleet outages planning and execution, and director-nuclear assurance in support of the operation of the current plants. The first priority and responsibility of each member of the nuclear staff throughout the life of the plant is nuclear safety. Decisions regarding unit activities are made conservatively, with expectations of this core value of nuclear safety regularly communicated to appropriate personnel by management interface, training, and unit directives.

Lines of authority, decision making, and communication are clearly and unambiguously established to enable various project members, including contractors, to understand that utility management is in charge and directs the project. Key executive and corporate management positions, functions, and responsibilities are described in [Subsection 13.1.1.3.1](#). The corporate organization is shown in [Figure 13.1-203](#). The management and technical support organization for design, construction, and preoperational activities is addressed in [Appendix 13AA](#).

13.1.1.2 Provisions for Technical Support Functions

Before beginning preoperational testing, the vice president—new nuclear projects, the plant general manager for Units 6 & 7, and the chief nuclear officer (CNO) establish the organization of managers, functional managers, supervisors, and staff sufficient to perform required functions for support of safe plant operation. These functions include the following:

- Nuclear, mechanical, structural, electrical, thermal-hydraulic, metallurgical and material, and instrumentation and controls engineering
- Safety review
- Quality assurance, audit, and surveillance
- Plant chemistry
- Radiation protection and environmental support
- Fueling and refueling operations support
- Training

- Maintenance support
- Operations support
- Fire protection
- Emergency planning organization
- Outside contractual assistance

If unit personnel are not qualified to address a specific problem, the services of qualified individuals from other functions in the company or an outside consultant are engaged. For example, major contractors, such as the reactor technology vendor or turbine generator manufacturer, provide technical support when equipment modifications or special maintenance problems are considered. Special studies, such as environmental monitoring, may be contracted to qualified consultants. **Figure 13.1-201** illustrates the management and technical support organizations for plant operation. See **Subsection 13.1.1.3.2** for descriptions of responsibilities and authorities of management positions for organizations providing technical support. **Table 13.1-201** shows the estimated number of positions required for each function.

Multiple layers of protection are provided to preserve unit integrity, including organization. Organizationally, operators and other shift members are typically assigned to a specific unit. Physical separation of units helps to minimize wrong unit activities. In addition, unit procedures and programs provide operating staff with methods to minimize human error, including tagging programs, procedure adherence requirements, and training.

13.1.1.2.1 Engineering Support

The engineering support department consists of system engineering, design engineering, engineering performance improvement, and program engineering. The engineering program group includes reactor engineering. These groups are responsible for performing the classical design activities, as well as providing engineering expertise in other areas of new plant sites.

Each engineering group has a functional manager who reports through a nuclear engineering site director to the site vice president. The engineering site director interfaces with the vice president–nuclear engineering support for governance and oversight. See **Figure 13.1-201**.

Turkey Point Units 6 & 7
COL Application
Part 2 — FSAR

The engineering support department is responsible for:

- Supporting plant operations in the engineering areas of mechanical, structural, electrical, thermal-hydraulic, metallurgy and materials, electronic, instrument and control, and fire protection. Priorities for support activities are established based on input from site management with emphasis on issues affecting safe operation of the plant
- Engineering programs
- Supporting procurement, chemical and environmental analysis, and maintenance activities in the plant as requested by the site management
- Performing design engineering of plant modifications
- Maintaining the design basis by updating the record copy of design documents, as necessary, to reflect the actual as-built configuration of the plant
- Accident and transient analyses
- Human factors engineering design process
- Reactor engineering

The site reactor engineering team is supported by the manager–nuclear fuel management and safety analysis. The manager–nuclear fuel management provides technical assistance in the areas of core design, core operations, core thermal limits, and core thermal hydraulics.

Engineering work may be contracted to and performed by outside companies in accordance with the Quality Assurance Program Description (QAPD).

Engineering resources are shared between Units 6 & 7. A single management organization oversees the engineering work associated with Units 6 & 7.

13.1.1.2.2 Fleet Support

Fleet support is responsible for fleet support activities, including: fleet training, fleet licensing, nuclear fuel, performance improvement, emergency preparedness, operating experience, document control, records management, security, and fleet standardization. Responsibilities also include nuclear information technology,

cyber security, chemistry, radiation protection, maintenance, operations, work management, and industrial safety. The organizations that implement some of these responsibilities are assigned to the site vice president(s).

13.1.1.2.3 Director Nuclear Assurance

This position reports to the CNO and is responsible for activities that include establishing, maintaining, and interpreting quality assurance practices and policies (including the QAPD), managing independent assessment (quality assurance [QA]), and establishing quality control practices and policies for quality verification activities. The director nuclear assurance has direct access to the CNO for resolution of any areas in question.

Additional responsibilities include facilitating actions deemed necessary to prevent unsafe plant conditions or a significant violation of the quality assurance program, periodically apprising the CNO of the status of the quality assurance program at FPL facilities and immediately apprising them of significant problems affecting quality, and verifying implementation of solutions for significant conditions adverse to quality identified by QA. The person in this position is also responsible for establishing the requirements for assessor and inspector certification, and providing for supplier evaluation, the conduct of supplier assessments or surveys, and verification that supplier quality assurance programs comply with FPL requirements. This position entails stop work authority at the sites and corporate offices.

Safety-related activities associated with the operation of the plant are governed by QA direction described in [Chapter 17](#) and the QAPD. The requirements and commitments contained in the QAPD apply to activities associated with structures, systems, and components that are safety-related and are mandatory and should be implemented, enforced, and adhered to by individuals and organizations. QA requirements are implemented through the use of approved procedures, policies, directives, instructions, or other documents that provide written guidance for the control of quality-related activities and provide for the development of documentation to provide objective evidence of compliance. The QA function includes:

- Maintaining the QAPD
- Coordinating the development of audit schedules
- Audit, surveillance, and evaluation of nuclear division suppliers

Turkey Point Units 6 & 7
COL Application
Part 2 — FSAR

- Supporting general QA indoctrination and training for the nuclear unit personnel

The site QA organization is independent of the unit operating line organization. Quality control (QC) inspection/testing activities to support plant operation, maintenance, and outages are independent of the unit operating line organization. QA and QC personnel report to the site quality manager.

Personnel resources of the QA organization are shared among units. A single management organization oversees the QA group for the units.

13.1.1.2.4 Chemistry

A chemistry program is established to monitor and control the chemistry of various plant systems so that corrosion of components and piping is minimized and radiation from corrosion by-products is kept to levels that allow operations and maintenance with radiation doses as low as reasonably achievable.

The chemistry manager is responsible to the plant general manager for maintaining chemistry programs and for monitoring and maintaining the water chemistry of plant systems. The staff of the chemistry department consists of laboratory technicians, support personnel, and supervisors who report to the chemistry manager.

Personnel resources of the chemistry organization are shared between Units 6 & 7. A single management organization oversees the chemistry group for Units 6 & 7.

13.1.1.2.5 Radiation Protection

A radiation protection program is established to protect the health and safety of the surrounding public and the personnel working at the plant. The radiation protection program is described in [Chapter 12](#). The program includes:

- Respiratory protection
- Personnel dosimetry
- Bioassay
- Survey instrument calibration and maintenance
- Radioactive source control

Turkey Point Units 6 & 7
COL Application
Part 2 — FSAR

- Effluents and environmental monitoring and assessment
- Radioactive waste shipping
- Radiation work permits
- Job coverage
- Radiation monitoring and surveys

The radiation protection department is staffed by radiation protection technicians, support personnel, and supervisors who report to the radiation protection manager. To provide sufficient organizational freedom from operating pressures, the radiation protection manager reports directly to the plant general manager.

Personnel resources of the radiation protection organization are shared between Units 6 & 7. A single management organization oversees the radiation protection group for Units 6 & 7.

13.1.1.2.6 Fueling and Refueling Support

The function of fueling and refueling is performed by a combination of personnel from various departments, including operations, maintenance, radiation protection, engineering, and reactor technology vendor, or other contractor staff.

Initial fueling and refueling operations are a function of the outage organization.

The work controls manager is responsible for planning and scheduling outages and for refueling support. The manager of refueling support services reports to the work controls manager and is responsible for implementing the refueling outage plan. The work controls manager reports to the plant general manager. The work controls manager interfaces with the vice president–fleet support for governance and oversight. The manager–refueling support services interfaces with the vice president–fleet outages planning and execution for governance and oversight.

Personnel resources of the outage and scheduling organization are shared between Units 6 & 7. A single management organization oversees the outage and scheduling group for Units 6 & 7.

13.1.1.2.7 Training and Development

The site training department establishes, maintains, and implements training programs in accordance with applicable plant administrative directives, regulatory

Turkey Point Units 6 & 7
COL Application
Part 2 — FSAR

requirements, and company operating policies so that unit personnel can meet the performance requirements of their jobs in operations, maintenance, technical support, and emergency response.

The objective of training programs is to provide qualified personnel to safely and efficiently operate and maintain the plant and to provide compliance with the license, Technical Specifications, and applicable regulations. The training department's responsibilities encompass operator initial license training, requalification training, and plant staff training, as well as the plant access training (general employee training) and radiation worker training. The training manager is independent of the operating line organization to provide independence from operating pressures. Nuclear plant training programs are described in [Section 13.2](#).

Personnel resources of the training department are shared between the units. A single management organization oversees the training group for the four nuclear units. The training manager reports functionally to the site vice president. The training manager receives programmatic direction from the vice president—fleet support.

13.1.1.2.8 Maintenance Support

In support of maintenance activities, planners, schedulers, and parts specialists prepare work packages, acquire proper parts, and develop procedures that provide for the successful completion of maintenance tasks. Maintenance tasks are integrated into the unit schedule for evaluating the operating or safe shutdown risk elements and providing for safe and efficient performance. The maintenance support department head reports to the maintenance manager who reports to the plant general manager.

Personnel of the maintenance support organization are shared between Units 6 & 7. A single management organization oversees the maintenance group for Units 6 & 7.

13.1.1.2.9 Operations Support

The operations support group provides the additional assistance required for the effective achievement of administrative and technical objectives relevant to the operations department. The operations support supervisor function is provided under the direction of the operations manager. Operations support includes the following programs:

- Operations procedures
 - Operations surveillances
 - Equipment tagging
 - Fire protection testing and surveillance
-

13.1.1.2.10 Fire Protection

PTN COL 9.5-1

FPL is committed to maintaining a fire protection program as described in [Section 9.5](#). The site vice president is responsible for the fire protection program. Assigning the responsibilities at that level provides the authority to obtain the resources and assistance necessary to meet fire protection program objectives, resolve conflicts, and delegate appropriate responsibility to the fire protection staff. The relationship of the site vice president to other staff personnel with fire protection responsibilities is shown on [Figure 13.1-201](#). Fire protection for the facility is organized and administered by the fire protection supervisor. The site vice president is responsible for the development and implementation of the fire protection program, including development of fire protection procedures, site personnel and fire brigade training, and inspections of fire protection systems and functions. Functional descriptions of position responsibilities are included in appropriate procedures. Unit personnel are responsible for adhering to the fire protection/prevention requirements detailed in [Section 9.5](#).

The Units 6 & 7 project director–new nuclear projects has the lead responsibility for the overall site fire protection during construction for new units prior to implementation of the operational fire protection program. Once the operational fire protection program is implemented the lead responsibility for Units 6 & 7 fire protection program transitions to the site vice president and the Units 6 & 7 operating organization.

Personnel resources of the fire protection organization are shared between Units 6 & 7. A single management organization oversees the fire protection group for Units 6 & 7.

13.1.1.2.11 Emergency Response Organization

PTN COL 13.1-1

The emergency response organization is composed of personnel who have the experience, training, knowledge, and ability necessary to implement actions to protect the public in the case of emergencies. Managers and unit personnel assigned to positions in the emergency response organization support the emergency preparedness organization and emergency plan, as required. Staff members of the emergency preparedness organization administer and orchestrate drills and training to maintain qualification of site staff members and develop procedures to guide and direct the emergency response organization during an emergency. The emergency preparedness manager reports to the site vice president. The site emergency response organization is described in the Emergency Plan.

Resources of the emergency preparedness group are shared between all units at the site. A single management organization oversees the emergency preparedness group for the four nuclear units.

13.1.1.2.12 Outside Contractual Assistance

Contract assistance with vendors and suppliers of services not available from organizations established as part of the utility staff is provided by the sourcing manager. Personnel in the sourcing department perform the necessary functions to contract vendors of special services to perform tasks for which utility staff does not have the experience or equipment required. The sourcing manager reports to the vice president-new nuclear projects.

Resources of the materials, purchasing, and contracts organization are shared between Units 6 & 7. A single management organization oversees the materials, purchasing, and contracts group for Units 6 & 7.

13.1.1.3 Organizational Arrangement

13.1.1.3.1 Executive Management Organization

Executive management is ultimately responsible for execution of activities and functions for the nuclear generating plants. Executive management establishes expectations so that a high level of quality, safety, and efficiency is achieved in aspects of plant operations and support activities through an effective management control system and an organization selected and trained to meet the above objectives. A high-level chart of the corporate headquarters and nuclear fleet organization is provided in [Figure 13.1-203](#).

Executives and management with direct line of authority for activities associated with plant operation are shown in **Figure 13.1-203**. Responsibilities of those executives and managers are specified below.

13.1.1.3.1.1 NextEra Energy Chairman and CEO

This position has the ultimate responsibility for the safe and reliable operation of each nuclear unit owned and/or operated by the utility. This position is responsible for the overall direction and management of the corporation and the execution of the company policies, activities, and affairs. This position is responsible for directing FPL's core operational business, including NextEra Energy, Florida Power & Light Company (FPL), and NextEra Energy Resources. This position is assisted in the direction of nuclear operations by the NextEra Energy president and chief operating officer and other executive staff in the nuclear division of the corporation.

13.1.1.3.1.2 NextEra Energy President and Chief Operating Officer

This position is responsible for promulgating corporate policy and corporate direction to the chief nuclear officer and other members of the senior management staff.

13.1.1.3.1.3 Executive Vice President Nuclear Division and Chief Nuclear Officer

The executive vice president nuclear division and CNO reports to the CEO through the chief operating officer. This position is responsible for the overall plant nuclear safety and takes the measures needed to provide acceptable performance of the staff in operating, maintaining, and providing technical support to the plant. This position is responsible for oversight of operations at each of the operating nuclear units in the system. This position delegates authority for the nuclear assurance of new nuclear generation through the director–nuclear assurance.

This position is responsible for nuclear operations, nuclear plant support, training, and performance improvement. The CNO implements these responsibilities through the following direct report positions: the regional vice presidents–nuclear fleet operations, vice president–fleet support, vice president–nuclear engineering support, and vice president–fleet outages planning and execution. It is the responsibility of the CNO to provide guidance and direction so that safety-related activities, including engineering, operations, operations support, maintenance, and planning are performed following the guidelines of the QA program. The CNO

has no ancillary responsibilities that might detract attention from nuclear safety matters.

13.1.1.3.1.4 Regional Vice Presidents–Nuclear Fleet Operations

Regional vice presidents–nuclear fleet operations report to the CNO. Each regional vice president–nuclear fleet operations is directly responsible for oversight of the day-to-day nuclear site operations, providing direction for each of the nuclear operating units in their region, ensuring the highest standards of nuclear safety and the overall operating efficiencies and cost effectiveness of nuclear generation.

13.1.1.3.1.5 Vice President–Fleet Support

The vice president–fleet support reports to the CNO and is responsible for fleet support activities, including: fleet training, fleet licensing, nuclear fuel, performance improvement, emergency preparedness, operating experience, document control, records management, security, and fleet standardization. Responsibilities also include nuclear information technology, cyber security, chemistry, radiation protection, maintenance, operations, work management, and industrial safety. The organizations that implement some of these responsibilities are assigned to the site vice president(s).

13.1.1.3.1.6 Vice President–Fleet Outages Planning and Execution

The vice president–fleet outages planning and execution reports to the CNO and is responsible for providing governance and oversight for refueling outage management, outage services, and vendor alliances and services. Responsibilities also include reactor and turbine services.

13.1.1.3.1.7 Vice President–Nuclear Engineering Support

This position reports to the CNO and is responsible for nuclear projects, nuclear plant design engineering, and engineering support via staff at both the corporate and site levels. Responsibilities include operating unit nuclear projects, engineering, major project engineering, nuclear fuel, probabilistic safety analysis, and special projects.

13.1.1.3.1.8 Executive Vice President–Engineering, Construction & Corporate Services

The executive vice president–engineering, construction & corporate services reports to the NextEra Energy President and COO and is responsible for new

Turkey Point Units 6 & 7
COL Application
Part 2 — FSAR

nuclear design and construction, construction scheduling and cost control, testing activities, and turnover to operations for new nuclear generation facilities. This position is responsible for the development and implementation of a construction QA organization and program consistent with company organization and policy.

13.1.1.3.1.9 Vice President—New Nuclear Projects

The vice president—new nuclear projects reports to the executive vice president—engineering, construction and corporate services, and is responsible for the overall safe and efficient licensing, engineering, construction, and preoperational test of new nuclear projects, and for the implementation of quality assurance requirements in the applicable areas specified by the QAPD.

13.1.1.3.1.10 Vice President—Integrated Supply Chain

The vice president integrated supply reports to the CEO through the executive vice president—engineering, construction and corporate services and the COO, and is responsible for procurement engineering, coordinating contract activities, negotiating, generating, and issuing procurement documents for required items and services supporting the operation, licensing, maintenance, modification, and inspection of FPL nuclear plants, and for materials and equipment to support the nuclear division staff. Responsibilities also include the review of procurement documents to assure that technical and quality requirements are incorporated into the procurement documents that it authorizes, performance of receipt inspection to verify that purchased items comply with procurement document requirements, and controlling materials received at each FPL nuclear plant site in accordance with company policy and procedures.

13.1.1.3.1.11 Vice President and Chief Information Officer

The chief information officer (CIO) reports to the CEO through the Executive Vice President and Chief Strategy, Policy and Business Process Improvement Officer. The CIO is responsible for nuclear information management such as computer-related hardware and software acquisition, deployment, maintenance, control and replacement, telecommunications, information/cyber security, and applicable training.

13.1.1.3.2 Site Support Organization

13.1.1.3.2.1 Engineering Site Director

The engineering site director is the onsite lead position for engineering and reports functionally to the site vice president and interfaces with the vice president–nuclear engineering support (offsite) for governance and oversight. The engineering site director is responsible for engineering activities related to the operation or maintenance of the plants and design change implementation support activities, and other functions described in [Subsection 13.1.1.2.1](#). The engineering site director directs functional managers responsible for design engineering, program engineering, system and component engineering, and engineering performance improvement. Program engineering staff includes reactor engineering as described in [Subsection 13.1.1.2.1](#).

Separate management organizations oversee the engineering support for Units 3 & 4 and Units 6 & 7.

13.1.1.3.2.2 Director Nuclear Fleet Security

The director nuclear fleet security is responsible for providing guidance and direction to the nuclear plant security manager at each site on the nuclear security, access authorization, and fitness for duty programs. The director nuclear fleet security reports to the vice president–fleet support.

13.1.1.3.2.3 Director Plant Support

The director plant support provides staff functions to the entire site for financial services, document services, management of the operating experience, and corrective action. The director plant support is assisted by managers, supervisors, and staff in the following units:

- Integrated supply chain
- Document control services
- Financial services
- Information technology
- Site security services
- Performance improvement

13.1.1.3.2.4 Emergency Preparedness Manager

The emergency preparedness manager is responsible for:

- Coordinating and implementing the plant emergency response plan with state and local emergency plans
- Developing, planning, and executing emergency drills and exercises
- Emergency action level development
- NRC reporting associated with 10 CFR 50.54 (q)

The functional manager in charge of emergency preparedness reports to the site vice president and is responsible for the combined emergency preparedness program for Turkey Point Units 3, 4, 6, and 7.

13.1.1.3.2.5 Training Manager

PTN COL 18.10-1

The training manager is responsible for training programs required for the safe and proper operation and maintenance of the plant, including:

- Operations training programs
- Plant staff training programs
- Plant access training
- Emergency plan training
- Radiation worker training

The training manager may seek assistance from other departments in the company or outside specialists such as educators and manufacturers. The training manager supervises a staff of training supervisors who coordinate the development, preparation, and presentation of training programs for nuclear plant personnel.

The training manager reports to the site vice president and is responsible for the combined training programs for Turkey Point Units 3, 4, 6, and 7.

13.1.1.4 Qualifications of Technical Support Personnel

PTN COL 18.6-1

The qualifications of managers and supervisors of the technical support organization meet the qualification requirements in education and experience for those described in ANSI/ANS-3.1-1993 (Reference 201) as endorsed and amended by RG 1.8. The qualification and experience requirements of headquarters staff are established in accordance with current corporate nuclear policy and procedure manuals.

13.1.2 OPERATING ORGANIZATION

13.1.2.1 Plant Organization

PTN COL 13.1-1

The plant management, technical support, and plant operating organizations are shown in Figure 13.1-201. The on-shift operating organization is presented in Figure 13.1-202, which shows those positions requiring NRC licenses. Additional personnel are required to augment normal staff during outages.

Nuclear plant employees are responsible for reporting problems with plant equipment and facilities. They are required to identify and document equipment problems in accordance with the QA program. QA program requirements as they apply to the operating organization are described in Chapter 17 and the QAPD. Administrative procedures or standing orders include:

- Establishing a QA program for the operational phase
- Preparing procedures necessary to carry out an effective QA program. See Section 13.5 for a description of the unit procedure program
- Establishing a program for review and audit of activities affecting plant safety. See Section 17.5 and the QAPD for a description of unit review and audit programs
- Preparing programs and procedures for rules of practice as described in Section 5.2 of N18.7-1976/ANS-3.2 (Reference 203)

Managers and supervisors in the plant operating organization are responsible for establishing goals and expectations for their organization and for reinforcing behaviors that promote radiation protection. Specifically, managers and

Turkey Point Units 6 & 7
COL Application
Part 2 — FSAR

supervisors are responsible for the following, as applicable to their position in the plant organization:

- Interface directly with radiation protection staff to integrate radiation protection measures into plant procedures and design documents and into the planning, scheduling, conduct, and assessment of operations and work
- Notify radiation protection personnel promptly when radiation protection problems occur or are identified, take corrective actions, and resolve deficiencies associated with operations, procedures, systems, equipment, and work practices
- Ensure that department personnel receive training and periodic retraining on radiation protection, in accordance with 10 CFR Part 19, so that they are properly instructed and briefed for entry into restricted areas
- Periodically observe and correct, as necessary, radiation worker practices
- Support radiation protection management in implementing the radiation protection program
- Maintain exposures to site personnel ALARA

13.1.2.1.1 Site Vice President

The site vice president directs the efforts of the plant general manager for Units 3 & 4, the plant general manager for Units 6 & 7, the director–plant support for the site, the nuclear engineering site director for Units 3 & 4, the nuclear engineering site director for Units 6 & 7, and the licensing manager for the site and receives input from the site quality manager. The site vice president reports to the regional vice president–fleet operations who is responsible for plants in that region.

13.1.2.1.2 Plant General Managers

The plant general managers and the plant general manager’s staff are assigned to Units 6 & 7 or Units 3 & 4 and are responsible for overall safe operation of the assigned units. They have control over those onsite activities necessary for safe operation and maintenance of the assigned units, including the following:

- Operations

Turkey Point Units 6 & 7
COL Application
Part 2 — FSAR

- Maintenance and modification
- Chemistry and radiochemistry
- Outage management

Additionally, the plant general manager has overall responsibility for occupational and public radiation safety for their assigned units. Radiation protection responsibilities of the plant general manager are consistent with the guidance in RG 8.8 and RG 8.10, including the following:

- Provide management radiation protection policy throughout the plant organization
- Provide an overall commitment to radiation protection by the plant organization
- Interact with and support the radiation protection manager on implementation of the radiation protection program
- Support identification and implementation of cost-effective modifications to plant equipment, facilities, procedures, and processes to improve radiation protection controls and reduce exposures
- Establish plant goals and objectives for radiation protection
- Maintain exposures to site personnel ALARA
- Support timely identification, analysis, and resolution of radiation protection problems (e.g., through the plant corrective action program)
- Provide training to site personnel on radiation protection in accordance with 10 CFR Part 19
- Establish an ALARA committee with delegated authority from the plant general manager that includes, at a minimum, the managers in charge of operations, maintenance, engineering, and radiation protection to help provide for effective implementation of line organization responsibilities for maintaining worker doses ALARA

In the absence of the plant general manager, the onsite individual designated by the plant general manager will be in charge for the duration of the absence. This

will normally be the scheduled duty manager. The succession of authority includes the authority to issue standing or special orders, as required.

As described in [Subsection 13.1.2.1.3.4](#), the operations manager is the plant general manager's direct representative for the conduct of operations.

13.1.2.1.2.1 Maintenance Manager

Plant maintenance is performed by the maintenance department mechanical, electrical, and instrumentation and controls (I&C) disciplines. Planning, scheduling, and work package preparation are performed by maintenance support. The functions of this department are to perform preventive and corrective maintenance, equipment testing, and implement modifications as necessary.

The maintenance manager is responsible for the performance of preventive and corrective maintenance and modification activities required to support operations, including compliance with applicable standards, codes, specifications, and procedures. The maintenance manager reports to the plant general manager and provides direction and guidance to the maintenance discipline functional managers and maintenance support staff.

13.1.2.1.2.2 Maintenance Superintendents

The superintendent of each maintenance discipline (mechanical, electrical, I&C, and support) is responsible for maintenance activities in that discipline, including plant modifications. The superintendents provide guidance in maintenance planning and craft supervision. They establish the necessary manpower levels and equipment requirements to perform both routine and emergency maintenance activities, seeking the services of others in performing work beyond the capabilities of the plant maintenance group. Each discipline superintendent is responsible for liaison with other plant staff organizations to facilitate safe operation of the unit. These superintendents report to the maintenance manager.

13.1.2.1.2.3 Maintenance Supervisors

The maintenance supervisors (mechanical, electrical, and I&C) supervise maintenance activities, assist in planning future maintenance efforts, and guide the efforts of the craft workers in their discipline. The maintenance discipline supervisors report to the appropriate maintenance discipline superintendent.

Turkey Point Units 6 & 7
COL Application
Part 2 — FSAR

13.1.2.1.2.4 Maintenance Mechanics, Electricians, and I&C Technicians

The discipline craft workers perform electrical and mechanical maintenance, I&C, and support tasks as they are assigned by the discipline supervisors. The craft workers trouble-shoot, inspect, repair, maintain, and modify plant equipment and perform technical specification surveillances on equipment for which they have cognizance. They perform these tasks in accordance with approved procedures and work packages.

13.1.2.1.2.5 Work Control Manager

The work control manager is responsible for:

- Planning and scheduling refueling, maintenance, and forced outages
- Providing direction and guidance to staff members in establishing outage activities
- Minimizing shutdown risk during outages with proper planning and preparation
- Directing activities during outages to provide safe, efficient, and effective outages
- Planning and scheduling online work activities, monitoring the online work process, and risk management

The work control manager is assisted by the outage supervisor and the online supervisor. The work control manager reports to the plant general manager. See [Subsection 13.1.1.2.6](#).

13.1.2.1.2.6 Radiation Protection Manager

The radiation protection manager has the direct responsibility for providing adequate protection of the health and safety of personnel working at the assigned units and members of the public during activities covered in the scope and extent of the license. Radiation protection responsibilities of the radiation protection manager are consistent with the guidance in RG 8.8 and RG 8.10. They include:

- Managing the radiation protection organization
- Establishing, implementing, and enforcing the radiation protection program
- Providing radiation protection input to facility design and work planning

Turkey Point Units 6 & 7
COL Application
Part 2 — FSAR

- Tracking and analyzing trends in radiation work performance and taking the necessary actions to correct adverse trends
- Supporting the plant emergency preparedness program and assigning emergency duties and responsibilities in the radiation protection organization
- Delegating authority to appropriate radiation protection staff to stop work or order an area evacuated (in accordance with approved procedures) when, in his or her judgment, the radiation conditions warrant such an action and such actions are consistent with plant safety

The radiation protection manager reports to the plant general manager and is assisted by the radiation protection supervisors.

13.1.2.1.2.7 Radiation Protection Supervisors

The radiation protection supervisors are responsible for carrying out the day-to-day operations and programs of the radiation protection department as listed in [Subsection 13.1.1.2.5](#).

Radiation protection supervisors report to the radiation protection manager.

13.1.2.1.2.8 Radiation Protection Technicians

Radiation protection technicians directly carry out responsibilities defined in the radiation protection program and procedures. In accordance with Technical Specifications, a radiation protection technician is on site whenever there is fuel in the vessel. See [Table 13.1-202](#).

The following are some of the duties and responsibilities of the radiation protection technicians:

- As delegated authority by the radiation protection manager, stop work or order an area evacuated (in accordance with approved procedures) when, in his or her judgment, the radiation conditions warrant such an action and such actions are consistent with plant safety
- Provide coverage and monitor radiation conditions for jobs potentially involving significant radiation exposure
- Conduct surveys, assess radiation conditions, and establish radiation protection requirements for access to and work in restricted, radiation, high

Turkey Point Units 6 & 7
COL Application
Part 2 — FSAR

radiation, very high radiation, and airborne radioactivity areas and in areas containing radioactive materials

- Provide control over the receipt, storage, movement, use, and shipment of licensed radioactive materials
- Review work packages, proposed design modifications, and operations and maintenance procedures to facilitate integration of adequate radiation protection controls and dose reduction measures
- Review and oversee implementation of plans for the use of process or other engineering controls to limit the concentrations of radioactive materials in the air
- Provide personnel monitoring and bioassay services
- Maintain, prescribe, and oversee the use of respiratory protection equipment
- Perform assigned emergency response duties

13.1.2.1.2.9 Chemistry Manager

The chemistry manager is responsible for developing, implementing, directing and coordinating the chemistry, radiochemistry, and the nonradiological environmental monitoring programs for the assigned units. This area includes overall operation of the hot lab, cold lab, emergency offsite facility lab, and nonradiological environmental monitoring. The chemistry manager is responsible for developing, administering, and implementing procedures and programs that provide for effective compliance with environmental regulations. The chemistry manager reports to the plant general manager and directly supervises the chemistry supervisors and chemistry technicians.

13.1.2.1.3 Operations Department

Operations activities are conducted with the safety of the public, personnel, and equipment as the overriding priority. The operations department is responsible for:

- Operating unit equipment
- Monitoring and watching safety and nonsafety-related equipment
- Fuel loading

Turkey Point Units 6 & 7
COL Application
Part 2 — FSAR

- Providing the nucleus of emergency and firefighting teams

The operations department maintains sufficient licensed and senior licensed operators to staff the control room continuously using a crew rotation system. The operations department is under the authority of the operations manager, who, through the operations supervisor, directs the day-to-day operation of the assigned units.

Specific duties, functions, and responsibilities of key shift members are described in [Subsections 13.1.2.1.2.4](#) through [13.1.2.1.2.8](#) and in plant administrative procedures and the Technical Specifications. The minimum shift manning requirements are shown in [Table 13.1-202](#).

Some resources of the operations organization are shared between Units 6 & 7.

Administrative and support personnel perform their duties on either unit. To operate or supervise the operation of more than one unit, an operator (senior reactor operator or reactor operator) must hold an appropriate, current license for each unit. A single management organization oversees the operations group for Units 6 & 7. See [Table 13.1-201](#) for estimated number of staff in the operations department for single or multiple-unit sites.

The operations support section is staffed with sufficient personnel to provide support activities for the operating shifts and overall operations department. The following is an overview of the operations organization.

13.1.2.1.3.1 Operations Manager

The operations manager has overall responsibility for the day-to-day operation of the assigned units. The operations manager reports to the plant general manager and is assisted by the shift technical advisors and the operations supervisor. The operations manager or the operations supervisor is licensed as a senior reactor operator.

13.1.2.1.3.2 Operations Supervisor

The operations supervisor, under the direction of the operations manager, is responsible for:

- Conducting shift plant operations in accordance with the operating license, Technical Specifications, and written procedures

Turkey Point Units 6 & 7
COL Application
Part 2 — FSAR

- Providing supervision of operating shift personnel for operational shift activities, including those of emergency and firefighting teams
- Coordinating with the operations support superintendent and other plant staff sections
- Verifying that nuclear plant operating records and logs are properly prepared, reviewed, evaluated, and turned over to the operations support superintendent

The operations supervisor is assisted in these areas by the shift manager, who directs the operating shift personnel. The operations supervisor reports to the operations manager.

13.1.2.1.3.3 Operations Support Superintendent

The operations support superintendent, under the direction of the operations manager, is responsible for:

- Directing and guiding plant operations support activities in accordance with the operating license, Technical Specifications, and written procedures
- Supervising operating support personnel, overseeing operations support activities, and coordinating support activities
- Providing for nuclear plant operating records and logs to be turned over to the nuclear records group for maintenance as QA records
- Coordinating operations related to fire protection program activities with the supervisor–fire protection

The operations support superintendent is assisted by the work management, operations procedures, and other support personnel.

13.1.2.1.3.4 Shift Manager

The shift manager is a licensed senior reactor operator responsible for the control room command function, and is the plant general manager's direct management representative for the conduct of operations. As such, the shift manager has the responsibility and authority to direct the activities and personnel at Units 6 & 7 as required to:

Turkey Point Units 6 & 7
COL Application
Part 2 — FSAR

- Protect the health and safety of the public, the environment, and personnel on the plant site
- Protect the physical security of the plant
- Prevent damage to site equipment and structures
- Comply with the operating license

The shift manager retains this responsibility and authority until formally relieved of operating responsibilities. Additional responsibilities of the shift manager include:

- Directing nuclear plant employees to report to the plant for response to potential and real emergencies
- Seeking the advice and guidance of the shift technical advisor and others in executing the duties of the shift manager whenever in doubt as to the proper course of action
- Promptly informing responsible supervisors of significant actions affecting their responsibilities
- Participating in operator training, retraining, and requalification activities from the standpoint of providing guidance, direction, and instruction to shift personnel

The shift manager is the senior management on shift and is responsible for Units 6 & 7. The shift manager is assisted in carrying out the above duties by the unit supervisors in charge on shift and the operating shift personnel. The shift manager reports to the operations supervisor.

13.1.2.1.3.5 Unit Supervisors

The unit supervisors are licensed senior reactor operators. The primary function of the unit supervisors is to administratively support the shift manager so that the command function is not overburdened with administrative duties and to supervise the licensed and non-licensed operators in carrying out the activities directed by the shift manager. Other duties include:

- Being aware of maintenance and testing performed during the shift
- Shutting down the reactor if conditions warrant this action

Turkey Point Units 6 & 7
COL Application
Part 2 — FSAR

- Informing the shift manager and other unit management in a timely manner of conditions that may affect public safety, plant personnel safety, or plant capacity or reliability, or cause a hazard to equipment
- Initiating immediate corrective action as directed by the shift manager in any upset situation until assistance, if required, arrives
- Participating in operator training, retraining, and requalification activities from the standpoint of providing guidance, direction, and instruction to shift personnel

The unit supervisors report directly to the shift manager.

13.1.2.1.3.6 Reactor Control Operators

The reactor control operators are licensed reactor operators and report to the unit supervisor. They are responsible for routine plant operations and performance of major evolutions at the direction of the unit supervisor.

Reactor control operator duties include:

- Monitoring control room instrumentation
- Responding to plant or equipment abnormalities in accordance with approved plant procedures
- Directing the activities of non-licensed operators
- Documenting operational activities, plant events, and plant data in shift logs
- Initiating plant shutdowns, scrams, or other compensatory actions when observation of plant conditions indicates that a nuclear safety hazard exists or when approved procedures so direct

Whenever there is fuel in the reactor vessel, at least one reactor control operator is in the control room monitoring the status of the unit at the main control panel. The reactor control operator assigned to the main control panel is designated the operator at the controls and conducts monitoring and operating activities in accordance with the guidance set forth in RG 1.114, which is further described in [Subsection 13.1.2.1.4](#).

13.1.2.1.3.7 Non-Licensed Operators

The non-licensed operators perform routine duties outside the control room as necessary for continuous, safe plant operation, including:

- Assisting in plant startup, shutdown, surveillance, and emergency response by manually or remotely changing equipment operating conditions, placing equipment in service, or securing equipment from service at the direction of the reactor control operator
- Performing assigned tasks in procedures and checklists, such as valve manipulations for plant startup, or in data sheets on routine equipment checks, and making accurate entries according to the applicable procedure, checklist, or data sheet
- Assisting in training new employees and in improving and upgrading their own performance by participating in the applicable sections of the training program

Non-licensed operators include auxiliary operators as shown in [Figure 13.1-202](#).

13.1.2.1.3.8 Shift Technical Advisor

FPL is committed to meeting NUREG-0737 TMI Action Plan item I.A.1.1 for shift technical advisors. The shift technical advisor reports directly to the shift manager and provides advanced technical assistance to the operating shift complement during normal and abnormal operating conditions. The shift technical advisor's responsibilities are detailed in plant administrative procedures as required by TMI Action Plan I.A.1.1 and NUREG 0737 Appendix C. These responsibilities include:

- Activities to monitor core power distribution and critical parameters
- Activities to assist the operating shift with technical expertise during normal and emergency conditions
- The evaluation of Technical Specifications, special reports, and procedural issues

The shift technical advisor primarily contributes to maximizing the safety of operations by independently observing plant status and advising shift supervision of conditions that could compromise plant safety. During transients or accident situations, the shift technical advisor independently assesses plant conditions and

provides technical assistance and advice to mitigate the incident and minimize the effect on personnel, the environment, and plant equipment.

A senior reactor operator on shift who meets the qualifications for the combined senior reactor operator/shift technical advisor position specified for Option 1 of Generic Letter 86-04 ([Reference 202](#)) may also serve as the shift technical advisor. If this option is used for a shift, then the separate shift technical advisor position may be eliminated for that shift.

13.1.2.1.3.9 Fire Protection Supervisor

PTN COL 9.5-1

In the engineering and support unit, this position is in charge of fire protection and the fire protection staff. Fire protection program implementation and maintenance are the responsibilities of the fire protection engineer for the assigned units. The fire protection supervisor is responsible for:

- Fire protection program requirements, including consideration of potential hazards associated with postulated fires, knowledge of building layout, and system design
- Postfire shutdown capability
- Design, maintenance, surveillance, and QA of fire protection features (e.g., detection systems, suppression systems, barriers, dampers, doors, penetration seals, and fire brigade equipment)
- Fire prevention activities (administrative controls and training)
- Fire brigade organization and training
- Prefire planning, including review and updating of prefire plans at least every 2 years

The fire protection supervisor reports through the program engineering manager to the site vice president, who has ultimate responsibility for the fire protection program. Additionally, the fire protection supervisor works with the operations support superintendent to coordinate activities and program requirements with the operations department. In accordance with RG 1.189, the fire protection engineer is a graduate of an engineering curriculum of accepted standing and has not less

than 6 years of engineering experience, 3 of which were in a responsible position in charge of fire protection engineering work.

13.1.2.1.3.10 Radwaste Operations Lead

PTN COL 13.1-1

This position is responsible for developing, implementing, directing, and coordinating the radwaste activities. This position reports to the operations supervisor.

This position supervises radwaste operators assigned to the radwaste area.

13.1.2.1.4 Conduct of Operations

Unit operations are controlled and/or coordinated through the control room. Maintenance activities, surveillances, and removal from/return to service of structures, systems, and components affecting the operation of the plant may not commence without the approval of senior control room personnel. The rules of practice for control room activities, as described by administrative procedures, which are based on RG 1.114, address the following:

- Position/placement of operator at the controls workstation and the expected area of the control room where most of the unit supervisor's time should be spent
- Definition and outline of "surveillance area" and requirement for continuous surveillance by the operator at the controls
- Relief requirements for operator at the controls and the unit supervisor

In accordance with 10 CFR 50.54:

- Reactivity controls may be manipulated only by licensed operators and senior operators except as allowed for training under 10 CFR Part 55
- Apparatus and mechanisms other than controls that may affect reactivity or power level of the reactor will be operated only with the consent of the operator at the controls or the unit supervisor
- During operation of the facility in modes other than cold shutdown or refueling, a senior operator will be in the control room and a licensed operator or senior operator will be present at the controls

13.1.2.1.5 Operating Shift Crews

Plant administrative procedures are used to implement the required shift staffing. These procedures establish crews with sufficient qualified plant personnel to staff the operational shifts and be readily available in the event of an abnormal or emergency situation. The objective is to operate the plant with the required staff and to develop work schedules that minimize overtime for plant staff members who perform safety-related functions. Work hour limitations are provided in unit procedures. When overtime is necessary, the provisions in the Technical Specifications and the plant administrative procedures apply. Shift crew staffing plans may be modified during refueling outages to accommodate safe and efficient completion of outage work in accordance with the work hour limitations.

The minimum composition of the operating shift crew is contingent on the unit operating status. Position titles, license requirements, and minimum shift manning for various modes of operation are contained in Technical Specifications, administrative procedures, and [Table 13.1-202](#). Routine shift operations staffing is illustrated in [Figure 13.1-202](#).

13.1.2.1.6 Fire Brigade

The plant is designed and the fire brigade is organized to be self-sufficient with respect to firefighting activities. The fire brigade is organized to address fires and related emergencies that could occur. It consists of a fire brigade leader and a sufficient number of team members to be consistent with the equipment that must be put in service during a fire emergency. A sufficient number of trained and physically qualified fire brigade members are available onsite during each shift. The fire brigade consists of at least five members on each shift. Members of the fire brigade are knowledgeable of building layout and system design. The assigned fire brigade members for any shift do not include the shift manager nor any other members of the minimum shift operating crew necessary for safe shutdown of the unit. It does not include any other personnel required for other essential functions during a fire emergency. Fire brigade members for a shift are designated in accordance with established procedures at the beginning of the shift.

13.1.2.1.7 Reclaimed Water Treatment Facility Manager

This position reports to the site vice president and is responsible for the safe operation and maintenance of the FPL reclaimed water treatment facility.

13.1.3 QUALIFICATION REQUIREMENTS OF NUCLEAR PLANT
PERSONNEL

PTN COL 18.6-1

13.1.3.1 Minimum Qualification Requirements

PTN COL 13.1-1

Qualifications of managers, supervisors, operators, and technicians of the operating organization meet the qualification requirements in education and experience for those described in ANSI/ANS-3.1-1993 ([Reference 201](#)), as endorsed and amended by RG 1.8.

13.1.3.2 Qualification Documentation

Résumés and/or other documentation of qualification and experience of initial appointees to appropriate management and supervisory positions are available for NRC review after position vacancies are filled.

STD DEP 1.1-1

13.1.4 COMBINED LICENSE INFORMATION ITEM

PTN COL 13.1-1

This COL item is addressed in [Subsections 13.1.1](#) through [13.1.3](#).

13.1.5 REFERENCES

201. American Nuclear Society, *American National Standard for Selection, Qualification, and Training of Personnel for Nuclear Power Plant*, ANSI/ANS-3.1-1993.
 202. NRC, U.S. Nuclear Regulatory Commission, *Generic Letter 86-04, Policy Letter, Engineering Expertise on Shift*.
 203. American Nuclear Society, *American National Standard for Administrative Controls and Quality Assurance for the Operational Phase of Nuclear Power Plants*, N18.7-1976/ANS-3.2.
-

Turkey Point Units 6 & 7
COL Application
Part 2 — FSAR

PTN COL 18.6-1

PTN COL 13.1-1

Table 13.1-201 (Sheet 1 of 3)
Generic Position/Site-Specific Position Cross Reference

Nuclear Function	Function Position – ANSI/ANS-3.1-1993 Section Reference		Nuclear Plant Position (Site-Specific)	Expected Positions Single Unit	Expected Additional Positions Second Unit
Executive Management	Chief Executive Officer		Chief Executive Officer (CEO)	1	—
	Chief Nuclear Officer		Chief Nuclear Officer (CNO)	1	—
	Executive, Nuclear Operations		Executive Vice President and CNO	1	—
	Executive, Nuclear Generation and Development		Executive Vice President— Engineering, Construction, & Corporate Services	1	—
Nuclear Support	Executive, Operations Support		Vice President—Fleet Support	1	—
Plant Management	Executive Plant Manager	4.2.1	Site Vice President	1	—
			Plant General Manager-Units 6 & 7	1	—
Engineering	Executive Manager	4.2.4	Vice President—Nuclear Engineering Support	1	—
			Engineering Site Director-Units 6 & 7	1	—
System Engineering	Functional Manager System Engineer	4.3.9	System Engineering Manager	1	—
			System Engineers	24	12
Design Engineering	Functional Manager Design Engineer	4.3.9	Design Engineering Manager	1	—
			Design Engineers	12	6
Engineering Programs	Functional Manager Programs Engineer	4.3.9	Operations Support Engineering Manager	2	—
			Operations Support Engineers		6
Reactor Engineering	Functional Manager Reactor Engineer	4.3.9	Reactor Engineering Supervisor	1	—
			Reactor Engineers	3	1
Maintenance	Manager	4.2.3	Maintenance Manager	1	—
Instrumentation and Control	Functional Manager Supervisor Technician	4.3.4 4.4.7 4.5.3.3	I&C Maintenance Superintendent	1	—
			I&C Maintenance Supervisor	3	1
			I&C Technicians	22	12
Mechanical	Functional Manager Supervisor Technician	4.3.6 4.4.9 4.5.7.2	Mechanical Maintenance Superintendent	2	—
			Mechanical Maintenance Supervisors	2	1
			Mechanics	22	8

Turkey Point Units 6 & 7
COL Application
Part 2 — FSAR

PTN COL 18.6-1

PTN COL 13.1-1

Table 13.1-201 (Sheet 2 of 3)
Generic Position/Site-Specific Position Cross Reference

Nuclear Function	Function Position – ANSI/ANS-3.1-1993 Section Reference		Nuclear Plant Position (Site-Specific)	Expected Positions Single Unit	Expected Additional Positions Second Unit
Electrical	Functional Manager	4.3.5	Electrical Maintenance Superintendent	1	—
	Supervisor	4.4.8	Electrical Maintenance Supervisor	2	1
	Technician	4.5.7.1	Electricians	14	6
Support	Functional Manager	4.3	Maintenance Support Superintendent	1	—
Operations	Manager	4.2.2	Operations Manager	1	—
Operations, Plant	Functional Manager	4.3.8	Operations Supervisor	1	1
Operations, Admin	Functional Manager	4.3.8	Operations Support Supervisor	1	—
Operations (On-shift)	Functional Manager	4.4.1	Shift Manager	6	—
	Supervisor	4.4.2	Unit Supervisor	6	6
			Nuclear Watch Engineer	6	6
	Licensed Operator	4.5.1	Reactor Control Operator	12	12
	Non-Licensed Operator	4.5.2	Non-Licensed Operator	36	18
	Shift Technical Supervisor	4.6.2	Shift Technical Advisor	6	—
Operations – Radwaste	Supervisor	4.4	Radwaste Operations Lead	1	—
Fire Protection	Supervisor	4.4	Fire Protection Supervisor	1	—
Radiation Protection	Functional Manager	4.5.3.2	Radiation Protection Manager	1	—
	Supervisor		Radiation Protection Supervisors	3	3
	Technician		Radiation Protection Technicians	18	9
	ALARA specialist		ALARA Supervisors	3	1
	Decon Technician		Utility Workers	6	2
Chemistry	Functional Manager	4.3.2	Chemistry Manager	1	—
	Supervisor	4.4.5	Chemistry Supervisors	4	1
	Technician	4.5.3.1	Chemistry Technicians	18	9
Nuclear Safety Assurance	Manager	4.2	Site Quality Manager	1	—
Licensing	Functional Manager	4.3	Licensing Manager	1	—
	Supervisor		Licensing Supervisor	1	—
	Licensing Engineer		Licensing Engineer	2	1
Corrective Action	Functional Manager	4.3	Performance Improvement Manager	1	—
	Corrective Action Specialist		Analysts	2	2

Turkey Point Units 6 & 7
COL Application
Part 2 — FSAR

PTN COL 18.6-1
PTN COL 13.1-1

Table 13.1-201 (Sheet 3 of 3)
Generic Position/Site-Specific Position Cross Reference

Nuclear Function	Function Position – ANSI/ANS-3.1-1993 Section Reference		Nuclear Plant Position (Site-Specific)	Expected Positions Single Unit	Expected Additional Positions Second Unit
Emergency Preparedness	Functional Manager	4.3	Site Emergency Preparedness Manager	1	—
	EP Planner		EP Planner	2	1
Training	Functional Manager	4.3.1	Site Training Manager	1	—
	Supervisor Ops Trng	4.4.4	Operations Training Supervisors	3	—
	Ops Training Instructor		Operations Training Instructors	2	—
	Supervisor Tech. Staff/ Maint		Maintenance & Technical Training Supervisors	9	4
	TrngTech Staff/Maint. Instructors		Tech/Maint Instructors	2	—
Purchasing and Contracts Security Planning and Scheduling	Functional Manager	4.3	Nuclear Materials Manager	1	—
	Functional Manager	4.3	Security Manager	1	—
	Functional Manager	4.3	Work Control Manager	1	—
	Functional Manager	4.3	Outage Supervisor	1	1
	Supervisor	4.4	Online Supervisor	1	1
Quality Assurance	Supervisor		Work Week Managers	6	6
	Functional Manager	4.3.7	Site Quality Manager	1	—
	Supervisor	4.4.13	Quality Assurance Supervisors	2	—
	QA Auditor		QA Auditors	3	3
	Supervisor	4.4.13	QC Supervisor	1	—
QC Inspector	4.4.11	QC Inspectors	4	2	
Startup testing	Supervisor	4.4.12	Startup Manager	2	—
	Startup Test Engineer Supervisor		Startup Test Supervisor	5	—
	Preop. Test Engineer		Startup Engineers	25	—

Turkey Point Units 6 & 7
COL Application
Part 2 — FSAR

Table 13.1-202
Minimum On-Duty Operations Shift Organization for Two-Unit Plant

PTN COL 13.1-1
PTN COL 18.6-1

Units Operating	Two Units Two Control Rooms
All Units Shutdown	1 SM (SRO) 2 RO 3 NLO
One Unit Operating ^(a)	1 SM (SRO) 2 SRO 3 RO 4 NLO
Two Units Operating ^(a)	1 SM (SRO) 2 SRO 3 RO 4 NLO
SM – Shift Manager SRO – Licensed Senior Reactor Operator	RO – Licensed Reactor Operator NLO – Non-Licensed Operator

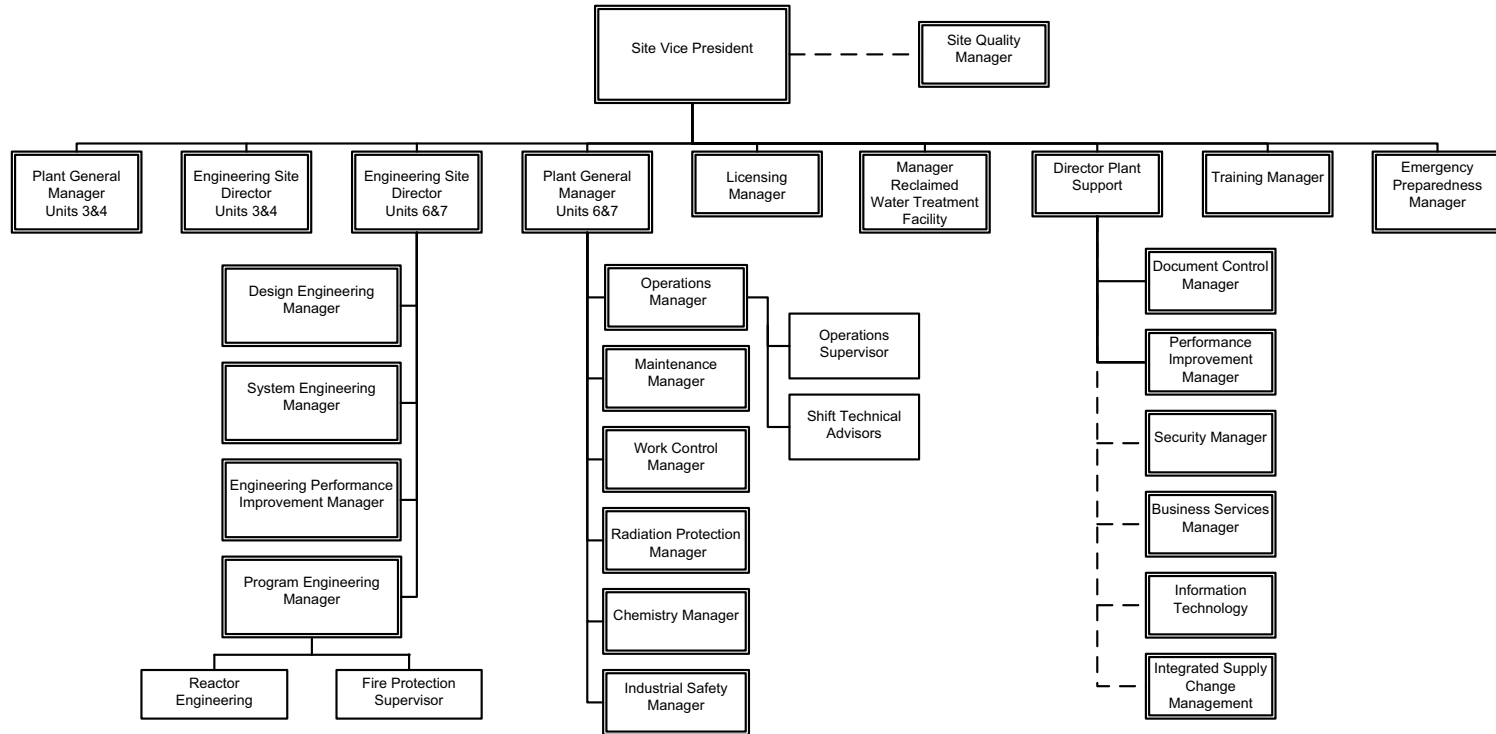
(a) Operating modes other than cold shutdown or refueling.

Notes:

1. In addition, one Shift Technical Advisor (STA) is assigned per shift during plant operation. A shift manager or another SRO on shift, who meets the qualifications for the combined Senior Reactor Operator/Shift Technical Advisor position, as specified for option 1 of Generic Letter 86-04, ([Reference 202](#)) the commission's policy statement on engineering expertise on shift, may also serve as the STA. If this option is used for a shift, then the separate STA position may be eliminated for that shift.
2. In addition to the minimum shift organization above, during refueling a licensed senior reactor operator or senior reactor operator limited (fuel handling only) is required to directly supervise any core alteration activity.
3. A shift manager/supervisor (SRO licensed for each unit that is fueled), will be onsite at all times when at least one unit is loaded with fuel.
4. A radiation protection technician will be onsite at all times when there is fuel in a reactor.
5. A chemistry technician will be onsite during plant operation in modes other than cold shutdown or refueling.
6. To operate, or supervise the operation of more than one unit, an operator (SRO or RO) must hold an appropriate, current license for each unit.

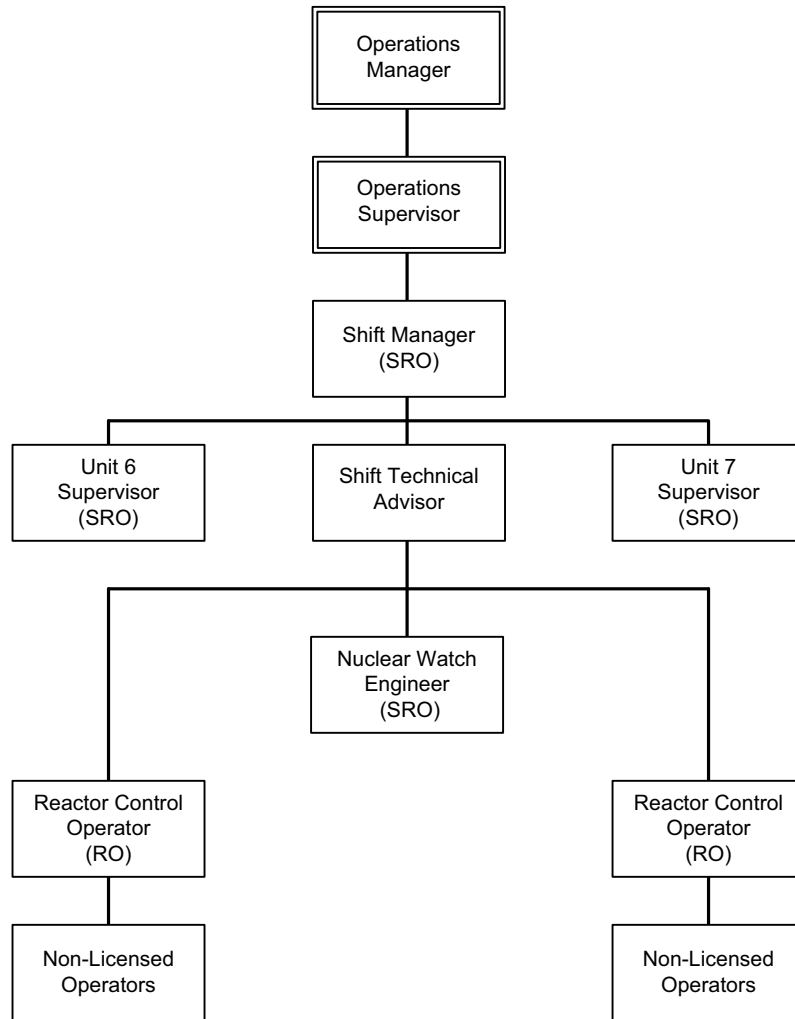
Turkey Point Units 6 & 7
 COL Application
 Part 2 — FSAR

Figure 13.1-201 Plant Management Organization



Turkey Point Units 6 & 7
COL Application
Part 2 — FSAR

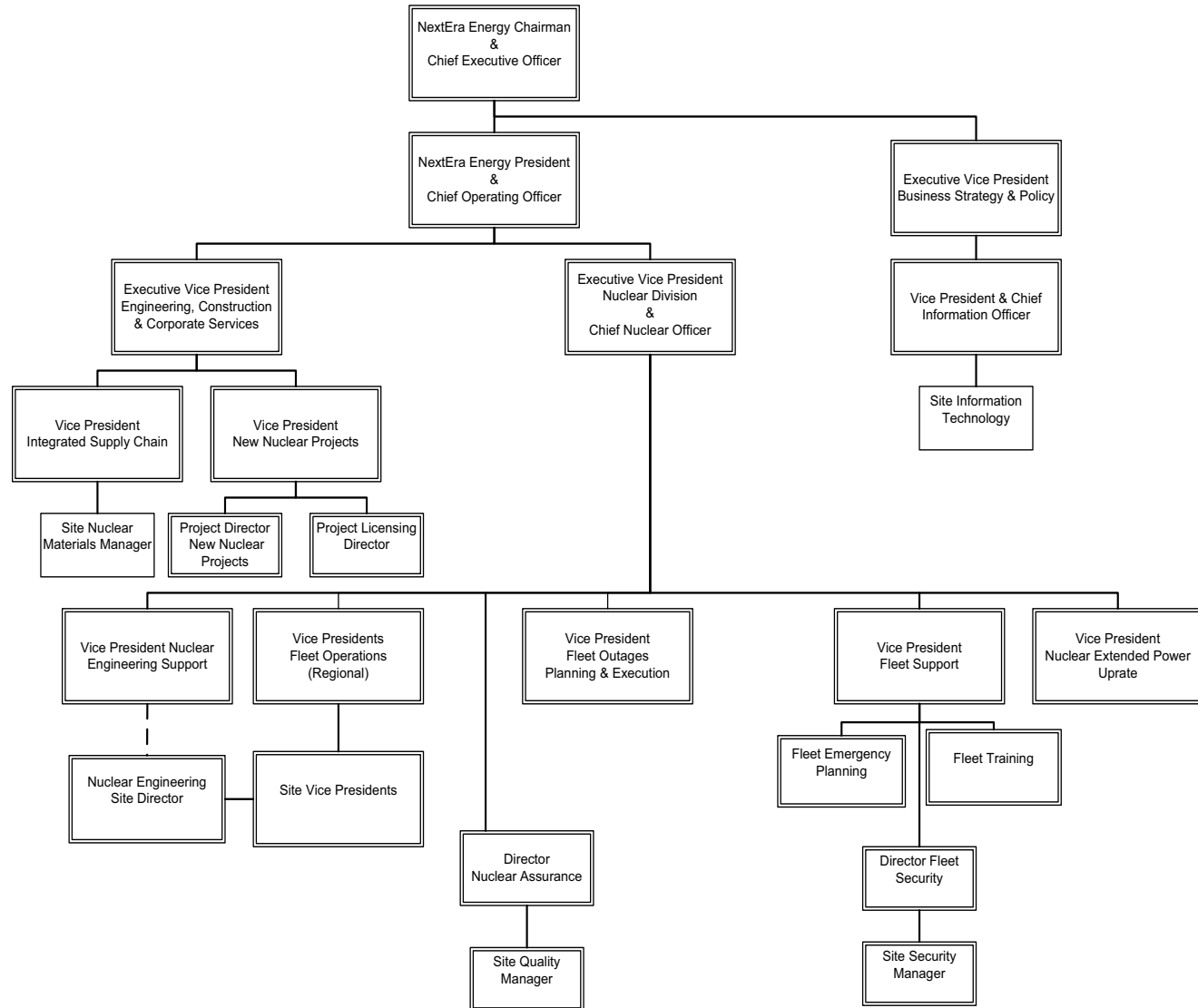
Figure 13.1-202 Shift Operations Organization



Turkey Point Units 6 & 7
COL Application
Part 2 — FSAR

PTN COL 13.1-1

Figure 13.1-203 Corporate and Engineering Organization



13.2 TRAINING

This **section** of the referenced DCD is incorporated by reference, with the following departures and/or supplements.

STD COL 13.2-1 This section incorporates by reference NEI 06-13A, Template for an Industry Training Program Description. See **Table 1.6-201**.

Table 13.4-201 provides milestones for training implementation.

STD COL 18.10-1 Operators involved in the Human Factors Engineering Verification and Validation (V&V) Program receive additional training specific to the task of performing V&V. A systematic approach to training is incorporated in developing this training program along with input from WCAP-14655, Designer's Input to the Training of the Human Factors Engineering Verification and Validation Personnel (**Reference 201**).

13.2.1 COMBINED LICENSE INFORMATION ITEM

STD COL 13.2-1 This COL Item is addressed in **Section 13.2**.

13.2.2 REFERENCES

201. Westinghouse, *Designer's Input to the Training of the Human Factors Engineering Verification and Validation Personnel*, WCAP-14655, Revision 1, August 1996.

13.3 EMERGENCY PLANNING

This **section** of the referenced DCD is incorporated by reference, with the following departures and/or supplements.

STD COL 13.3-1 The emergency planning information is submitted to the Nuclear Regulatory Commission as a separate licensing document.

Post-72 hour support actions, as discussed in **DCD Subsections 1.9.5.4** and **6.3.4**, are addressed in **DCD Subsections 6.2.2, 8.3, and 9.1.3**. Provisions for establishing post-72 hour ventilation for the main control room, instrumentation and control rooms, and dc equipment rooms are established in operating procedures.

STD COL 13.3-2 The emergency plan describes the plans for coping with emergency situations, including communications interfaces and staffing of the emergency operations facility.

STD SUP 13.3-1 **Table 13.4-201** provides milestones for emergency planning implementation.

13.3.1 COMBINED LICENSE INFORMATION ITEM

STD COL 13.3-1 This COL Item is addressed in **Section 13.3**.

STD COL 13.3-2 This COL Item is addressed in **Section 13.3** and in the Emergency Plan.

13.4 OPERATIONAL PROGRAMS

This **section** of the referenced DCD is incorporated by reference, with the following departures and /or supplements.

STD COL 13.4-1

Operational programs are specific programs that are required by regulations. **Table 13.4-201** lists each operational program, the regulatory source for the program, the section of the FSAR in which the operational program is described, and the associated implementation milestone(s).

13.4.1 COMBINED LICENSE INFORMATION ITEM

STD COL 13.4-1

This COL Item is addressed in **Section 13.4**.

13.4.2 REFERENCES

201. ASME Boiler and Pressure Vessel Code (B&PVC), *Section XI — Rules for Inservice Inspection of Nuclear Power Plant Components*.
 202. ASME OM Code for the Operation and Maintenance of Nuclear Power Plants.
-

Turkey Point Units 6 & 7
COL Application
Part 2 — FSAR

STD COL 13.4-1

Table 13.4-201 (Sheet 1 of 5)
Operational Programs Required by NRC Regulations

Item	Program Title	Program Source (Required by)	FSAR Section	Implementation	
				Milestone	Requirement
1.	Inservice Inspection Program	10 CFR 50.55a(g)	5.2.4, 5.4.2.5, 6.6	Prior to Commercial service	10 CFR 50.55a(g), ASME XI IWA 2430(b) (Reference 201)
2.	Inservice Testing Program	10 CFR 50.55a(f), 10 CFR Part 50, Appendix A	3.9.6, 5.2.4	After generator online on nuclear heat ^(a)	10 CFR 50.55a(f), ASME OM Code (Reference 202)
3.	Environmental Qualification Program	10 CFR 50.49(a)	3.11	Prior to initial fuel load	License Condition
4.	Preservice Inspection Program	10 CFR 50.55a(g)	5.2.4, 5.4.2.5, 6.6	Completion prior to initial plant start-up	10 CFR 55a(g), ASME Code Section XI IWB-2200(a) (Reference 201)
5.	Reactor Vessel Material Surveillance Program	10 CFR 50.60, 10 CFR 50.61, 10 CFR Part 50, Appendix H	5.3.2.6	Prior to initial criticality	License Condition
6.	Preservice Testing Program	10 CFR 50.55a(f)	3.9.6	Prior to initial fuel load	License Condition
7.	Containment Leakage Rate Testing Program	10 CFR 50.54(o), 10 CFR Part 50, Appendix A (GDC 52), 10 CFR Part 50, Appendix J	6.2.5.1	Prior to initial fuel load	License Condition
8.	Fire Protection Program (portions applicable to SNM)	10 CFR 50.48 10 CFR 30.32 10 CFR 40.31	9.5.1.8	Prior to receipt of fuel onsite Prior to initial fuel load Prior to initial receipt of byproduct, source, or special nuclear materials (excluding Exempt Quantities as described in 10 CFR 30.18)	License Condition 10 CFR 30.32(a) 10 CFR 40.31(a)

Turkey Point Units 6 & 7
COL Application
Part 2 — FSAR

STD COL 13.4-1

Table 13.4-201 (Sheet 2 of 5)
Operational Programs Required by NRC Regulations

Item	Program Title	Program Source (Required by)	FSAR Section	Implementation	
				Milestone	Requirement
9.	Process and Effluent Monitoring and Sampling Program:				
	Radiological Effluent Technical Specifications/Standard Radiological Effluent Controls	10 CFR 20.1301 and 20.1302, 10 CFR 50.34a, 10 CFR 50.36a, 10 CFR Part 50, Appendix I, Section II and IV	11.5	Prior to initial fuel load	License Condition
	Offsite Dose Calculation Manual	Same as above	11.5	Prior to initial fuel load	License Condition
	Radiological Environmental Monitoring Program	Same as above	11.5	Prior to initial fuel load	License Condition
	Process Control Program	Same as above	11.4	Prior to initial fuel load	License Condition
10.	Radiation Protection Program (including ALARA principle)	10 CFR 20.1101 10 CRF 20.1406	12.1 12.5		License Condition
	<ul style="list-style-type: none"> • Radioactive Source Control (assignment of RP Supervisor) • Assignment of RP Supervisor • Minimization of Contamination • Personnel Dosimetry • Radiation Monitoring and Surveys • Radiation Work Permits • Assignment of RP Manager • Respiratory Protection • Bioassay • Effluents and Environmental Monitoring and Assessment • Job Coverage • Radioactive Waste Shipping 			<ol style="list-style-type: none"> 1. Prior to initial receipt of byproduct, source, or special nuclear materials (excluding Exempt Quantities as described in 10 CFR 30.18) 2. Prior to receipt of fuel onsite 3. Prior to initial fuel load 4. Prior to first shipment of radioactive waste 	

Turkey Point Units 6 & 7
COL Application
Part 2 — FSAR

STD COL 13.4-1

Table 13.4-201 (Sheet 3 of 5)
Operational Programs Required by NRC Regulations

Item	Program Title	Program Source (Required by)	FSAR Section	Implementation	
				Milestone	Requirement
11.	Non Licensed Plant Staff Training Program (portions applicable to SNM)	10 CFR 50.120 10 CFR 30.32 10 CFR 40.31	13.2	18 months prior to scheduled date of initial fuel load Prior to initial receipt of byproduct, source, or special nuclear materials (excluding Exempt Quantities as described in 10 CFR 30.18)	10 CFR 50.120(b) 10 CFR 30.32(a) 10 CFR 40.31(a)
12.	Reactor Operator Training Program	10 CFR 55.13, 10 CFR 55.31, 10 CFR 55.41, 10 CFR 55.43, 10 CFR 55.45	13.2	18 months prior to scheduled date of initial fuel load	License Condition
13.	Reactor Operator Requalification Program	10 CFR 50.34(b), 10 CFR 50.54(i), 10 CFR 55.59	13.2	Within 3 months after the date the Commission makes the finding under 10 CFR 52.103(g)	10 CFR 50.54 (i-1)

Turkey Point Units 6 & 7
COL Application
Part 2 — FSAR

STD COL 13.4-1

Table 13.4-201 (Sheet 5 of 5)
Operational Programs Required by NRC Regulations

STD COL 13.4-1

Item	Program Title	Program Source (Required by)	FSAR Section	Implementation	
				Milestone	Requirement
16.	Quality Assurance Program – Operation	10 CFR 50.54(a), 10 CFR Part 50, Appendix A (GDC 1), 10 CFR Part 50, Appendix B	17.5	COL issuance	10 CFR 50.54(a)(1)
17.	Maintenance Rule	10 CFR 50.65	17.6	Prior to fuel load authorization per 10 CFR 52.103(g)	10 CFR 50.65(a)(1)
18.	Motor-Operated Valve Testing	10 CFR 50.55a(b)(3)(ii)	3.9.6.2.2	Prior to initial fuel load	License Condition
19.	Initial Test Program	10 CFR 50.34, 10 CFR 52.79(a)(28)	14.2	Prior to the first construction test being conducted for the Construction Test Program Prior to the first preoperational test for the Preoperational Test Program Prior to initial fuel load for the Startup Test Program	License Condition
20.	Fitness for Duty Program (Construction - Mgt. & Oversight Personnel)	10 CFR Part 26, Subparts A-H, N, and O	13.7	Prior to initiating onsite construction	License Condition
	Fitness for Duty Program (Construction - Workers & First Line Supv.)	10 CFR Part 26 Subpart K	13.7	Prior to initiating onsite construction	License Condition
	Fitness for Duty Program (Operation)	10 CFR Part 26	13.7	Prior to initial fuel load	License Condition
21.	Cyber Security Program	10 CFR 73.54	13.6	Prior to initial fuel load	License Condition

(a) Inservice Testing Program will be fully implemented by generator on line on nuclear heat. Appropriate portions of the program are implemented as necessary to support the system operability requirements of the technical specifications

13.5 PLANT PROCEDURES

This **section** of the referenced DCD is incorporated by reference, with the following departures and/or supplements.

STD DEP 1.1-1 **DCD Subsection 13.5.1**, Combined License Information, is renumbered in this FSAR section to **13.5.3**.

STD COL 13.5-1 This section of the FSAR describes the administrative and other procedures that are not described in the DCD that the operating organization (plant staff) uses to conduct the routine operating, abnormal, and emergency activities in a safe manner.

The Quality Assurance Program Description (QAPD), as presented in **Section 17.5**, describes procedural document control, record retention, adherence, assignment of responsibilities, and changes.

Procedures are identified in this section by topic, type, or classification in lieu of the specific title and represent general areas of procedural coverage.

Procedures are issued prior to fuel load to allow sufficient time for plant staff familiarization and to develop operator licensing examinations.

The format and content of procedures are controlled by the applicable AP1000 Writer's Guideline.

Each procedure is sufficiently detailed for an individual to perform the required function without direct supervision, but does not provide a complete description of the system or plant process. The level of detail contained in the procedure is commensurate with the qualifications of the individual normally performing the function.

Procedures are developed consistent with guidance described in **DCD Section 18.9**, "Procedure Development," and with input from the human factors engineering process and evaluations.

13.5.1 ADMINISTRATIVE PROCEDURES

This section describes administrative procedures that provide administrative control over activities that are important to safety for the operation of the facility.

Turkey Point Units 6 & 7
COL Application
Part 2 — FSAR

Procedures outline the essential elements of the administrative programs and controls as described in ANSI/ANS 3.2-1988 (Reference 201) and in Section 17.5. These procedures are organized such that the program elements are prescribed in documents normally referred to as administrative procedures. Regulatory and industry guidance for the appropriate format, content, and typical activities delineated in written procedures is implemented as appropriate.

Administrative procedures contain adequate programmatic controls to provide effective interface among organizational elements. This includes contractor and owner organizations providing support to the station operating organization.

A Writer's Guideline promotes the standardization and application of human factors engineering principles to procedures. The Writer's Guideline establishes the process for developing procedures that are complete, accurate, consistent, and easy to understand and follow. The Writer's Guideline provides objective criteria so that procedures are consistent in organization, style, and content. The Writer's Guideline includes criteria for procedure content and format, including the writing of action steps and the specification of acceptable acronym lists and acceptable terms to be used.

Procedure maintenance and control of procedure updates are performed in accordance with the QAPD, as described in Section 17.5.

The administrative programs and associated procedures developed in the pre-COL phase are described in Table 13.5-201 (for future designation as historical information).

The plant administrative procedures provide procedural instructions for the following:

- Procedures review and approval
- Equipment control procedures — These procedures provide for control of equipment, as necessary, to maintain personnel and reactor safety, and to avoid unauthorized operation of equipment
- Control of maintenance and modifications
- Crane operation procedures — Crane operators who operate cranes over fuel pools are qualified and conduct themselves in accordance with ANSI B30.2 (Chapter 2-3), "Overhead and Gantry Cranes" (Reference 202)

Turkey Point Units 6 & 7
COL Application
Part 2 — FSAR

- Temporary changes to procedures
 - Temporary procedure issuance and control
 - Special orders of a temporary or self-canceling nature
-

PTN COL 13.5-1

- Standing orders to shift personnel, including the authority and responsibility of the shift manager, unit supervisor, reactor control operator, and shift technical advisor
-

STD COL 13.5-1

- Manipulation of controls and assignment of shift personnel to duty stations per the requirements of 10 CFR 50.54 (i), (j), (k), (l), and (m) including delineation of the space designated for the “At the Controls” area of the control room
- Shift relief and turnover procedures
- Fitness for Duty
- Control Room access
- Working hour limitations
- Feedback of design, construction, and applicable important industry and operating experience
- Shift Manager administrative duties
- Verification of correct performance of operational activities
- A vendor interface program that provides vendor information for safety related components is incorporated into plant documentation
- Fire protection program implementation

13.5.2 OPERATING AND MAINTENANCE PROCEDURES

13.5.2.1 Operating and Emergency Operating Procedures

This information is addressed in the DCD.

13.5.2.2 Maintenance and Other Operating Procedures

The QAPD, as described in [Section 17.5](#), provides guidance for procedural adherence. Regulatory and industry guidance for the appropriate format, content, and typical activities delineated in written procedures is implemented as appropriate.

13.5.2.2.1 Plant Radiation Protection Procedures

The plant radiation protection program is contained in procedures. Procedures are developed and implemented for such things as: maintaining personnel exposures, plant contamination levels, and plant effluents ALARA; monitoring both external and internal exposures of workers, considering industry-accepted techniques; routine radiation surveys; environmental monitoring in the vicinity of the plant; radiation monitoring of maintenance and special work activities; evaluation of radiation protection implications of proposed modifications; establishing quality assurance requirements applicable to the radiation protection program; and maintaining radiation exposure records of workers and others.

13.5.2.2.2 Emergency Preparedness Procedures

A discussion of emergency preparedness procedures can be found in the Emergency Plan.

13.5.2.2.3 Instrument Calibration and Test Procedures

The QAPD, as discussed in [Section 17.5](#), provides a description of procedural requirements for instrumentation calibration and testing.

13.5.2.2.4 Chemistry Procedures

Procedures provided for chemical and radiochemical control activities include the nature and frequency of sampling and analyses; instructions for maintaining fluid quality within prescribed limits; the use of control and diagnostic parameters; and limitations on concentrations of agents that could cause corrosive attack, foul heat transfer surfaces or become sources of radiation hazards as a result of activation.

Procedures are also provided for the control, treatment, and management of radioactive wastes and control of radioactive calibration sources.

Turkey Point Units 6 & 7
COL Application
Part 2 — FSAR

13.5.2.2.5 Radioactive Waste Management Procedures

Procedures for the operation of the radwaste processing systems provide for the control, treatment, and management of onsite radioactive wastes. Procedural controls are in place for radiological releases.

13.5.2.2.6 Maintenance, Inspection, Surveillance, and Modification Procedures

13.5.2.2.6.1 Maintenance Procedures

Maintenance procedures describe maintenance planning and preparation activities. Maintenance procedures are developed considering the potential impact on the safety of the plant, license limits, availability of equipment required to be operable, and possible safety consequences of concurrent or sequential maintenance, testing or operating activities.

Maintenance procedures contain sufficient detail to permit the maintenance work to be performed correctly and safely. Procedures include provisions for conducting and recording results of required tests and inspections, if not performed and documented under separate test and inspection procedures. References are made to vendor manuals, plant procedures, drawings, and other sources as applicable.

Instructions are included, or referenced, for returning the equipment to its normal operating status. Testing is commensurate with the maintenance that has been performed. Testing may be included in the maintenance procedure or be covered in a separate procedure.

The preventive maintenance program, including preventive and predictive procedures, as appropriate for structures, systems and components, prescribes the frequency and type of maintenance to be performed. An initial program based on service conditions, experience with comparable equipment and vendor recommendations is developed prior to fuel loading. The program is revised and updated as experience is gained with the equipment. To facilitate this, equipment history files are created and kept current. The files are organized to provide complete and easily retrievable equipment history.

13.5.2.2.6.2 Inspection Procedures

The QAPD, as discussed in [Section 17.5](#), provides a description of procedural requirements for inspections.

13.5.2.2.6.3 Modification Procedures

Plant modifications and changes to setpoints are developed in accordance with approved procedures. These procedures control necessary activities associated with the modifications such that they are carried out in a planned, controlled, and orderly manner. For each modification, design documents such as drawings, equipment and material specifications, and appropriate design analyses are developed or the as-built design documents are utilized. Separate reviews are conducted by individuals knowledgeable in both technical and QA requirements to verify the adequacy of the design effort.

Proposed modification(s) which involve a license amendment or a change to Technical Specifications are processed as proposed license amendment request(s).

Plant procedures impacted by modifications are changed prior to declaring the system operable to reflect revised plant conditions; and cognizant personnel who are responsible for operating and maintaining the modified equipment are adequately trained.

13.5.2.2.7 Material Control Procedures

The QAPD, as discussed in [Section 17.5](#), provides a description of procedural requirements for material control.

13.5.2.2.8 Security Procedures

A discussion of security procedures is provided in the Security Plan.

STD DEP 1.1-1

13.5.3 COMBINED LICENSE INFORMATION ITEM

STD COL 13.5-1

Information for this COL item is addressed in [13.5](#).

13.5.4 REFERENCES

201. ANSI/ANS 3.2-1988, *Administrative Control and Quality Assurance for the Operational Phase of Nuclear Power Plants*.

Turkey Point Units 6 & 7
COL Application
Part 2 — FSAR

202. ANSI B30.2 (Chapter 2-3), *Overhead and Gantry Cranes*.

Table 13.5-201
Pre-COL Phase Administrative Programs and Procedures

STD COL 13.5-1

(This table is included for future designation as historical information.)

- Design/Construction Quality Assurance Program
 - Reporting of Defects and Noncompliance, 10 CFR Part 21 Program
 - Design Reliability Assurance Program
-

13.6 SECURITY

This **section** of the referenced DCD is incorporated by reference, with the following departures and/or supplements.

STD COL 13.6-1
STD COL 13.6-5

The Security Plan consists of the Physical Security Plan, the Training and Qualification Plan, and the Safeguards Contingency Plan. The Security Plan is submitted to the Nuclear Regulatory Commission as a separate licensing document to fulfill the requirements of 10 CFR 52.79(a)(35) and 52.79(a)(36). The Security Plan meets the requirements contained in 10 CFR Part 73 and will be maintained in accordance with the requirements of 10 CFR 52.98. The Plan is categorized as Security Safeguards Information and is withheld from public disclosure pursuant to 10 CFR 73.21.

The Cyber Security Plan is submitted to the Nuclear Regulatory Commission as a separate licensing document to fulfill the requirements contained in 10 CFR 52.79(a)(36) and 10 CFR 73.54. The Cyber Security Plan will be maintained in accordance with the requirements of 10 CFR 52.98. The Plan is withheld from public disclosure pursuant to 10 CFR 2.390.

Table 13.4-201 provides milestones for security program and cyber security program implementation.

13.6.1 COMBINED LICENSE INFORMATION ITEMS

STD COL 13.6-1

Information for the Security Plan portion of this COL item is addressed in **Section 13.6**.

STD COL 13.6-5

Information for the cyber security program portion of this COL item is addressed in **Section 13.6**.

Turkey Point Units 6 & 7
COL Application
Part 2 — FSAR

13.6.2 REFERENCES

201. Not used

|

Turkey Point Units 6 & 7
COL Application
Part 2 — FSAR

STD DEP 1.1-1

DCD Section 13.7 is redistributed to include DCD Section 13.7 references 7, 8, and 10 with COLA FSAR Subsection 13.5.4 and DCD Section 13.7 references 2, 3, and 4 with COLA FSAR Subsection 13.6.2.

Add the following new section after DCD Section 13.6.

13.7 FITNESS FOR DUTY

PTN SUP 13.7-1

The Fitness for Duty (FFD) Program is implemented and maintained in two phases; the construction phase program and the operating phase program. The construction and operations phase programs are implemented as identified in Table 13.4-201.

The construction phase program is consistent with NEI 06-06 (Reference 201). The workforce population subject to random testing during construction is determined on a weekly basis by averaging the total number of active construction badges over each preceding seven-day period. The random selection from each week's workforce population is identified by a standard computer-generated random number generator using this number of active badges as the range of numbers considered in the weekly random testing selection.

The operations phase program is consistent with 10 CFR Part 26.

13.7.1 REFERENCES

201. Nuclear Energy Institute *Fitness for Duty Program Guidance for New Nuclear Power Plant Construction Sites*, NEI 06-06, Revision 1.
-

Add the following new appendix at the end of **DCD Chapter 13**.

PTN COL 13.1-1

APPENDIX 13AA CONSTRUCTION-RELATED ORGANIZATION

The information in this appendix is included for future designation as historical information. Paragraphs are numbered to be subsequent to **Subsection 13.1.1.1**.

13AA.1.1.1.1 Design and Construction Activities

The Westinghouse Electric Company (WEC) was selected to design, fabricate, deliver, and install the AP1000 advanced light water pressurized water reactors (PWR) and to provide technical direction for installation and startup of this equipment. **DCD Subsection 1.4.1** provides detailed information regarding WEC past experience in designing, developing, and manufacturing nuclear power facilities. Operating experience from designing, constructing, and operating earlier WEC PWRs is applied in designing, constructing, and operating the AP1000 as described in numerous locations throughout the DCD (e.g., **DCD Subsections 3.6.4.4, 3.9.4.2.1, 4.2.3.1.3**).

A construction architect/engineer provides the construction of the plant and additional design engineering for selected site-specific portions of the plant. The architect/engineer is selected based on experience and proven technical capability in nuclear construction projects or projects of similar scope and complexity.

Other design and construction activities are generally contracted to qualified suppliers of such services. Implementing or delegating design and construction responsibilities is described in the subsections below. QA aspects of these activities are described in **Chapter 17**.

13AA.1.1.1.1.1 Principal Site-Related Engineering Work

The principal site engineering activities accomplished toward plant construction and operation are:

a. Meteorology

Information concerning local (site) meteorological parameters is developed and applied by plant and contract personnel to assess the impact of Units 6 & 7 on local meteorological conditions. An onsite meteorological measurements program is employed by unit personnel to produce data for the purpose of making

atmospheric dispersion estimates for postulated accidental and expected routine airborne releases of effluents. A maintenance program is established for surveillance, calibration, and repair of instruments. More information regarding the study and meteorological program is found in [Section 2.3](#).

b. Geology

Information relating to site and regional geotechnical conditions is developed and evaluated by utility and contract personnel to determine if geologic conditions could present a challenge to plant safety. Items of interest include geologic structure, seismicity, geological history, and ground water conditions. During construction, foundations in the power block area are mapped or visually inspected and photographed. [Section 2.5](#) provides details of these investigations.

c. Seismology

Information relating to seismological conditions is developed and evaluated by utility and contract personnel to determine if the site location and area surrounding the site are appropriate from a safety standpoint for constructing and operating a nuclear power plant. Information regarding tectonics, seismicity, correlation of seismicity with tectonic structure, characterization of seismic sources, and ground motion are assessed to estimate the potential for strong earthquake ground motions or surface deformation at the site. [Section 2.5](#) provides details of these investigations.

d. Hydrology

Information relating to hydrological conditions at the plant site and the surrounding area is developed and evaluated by utility and contract personnel. The study includes hydrologic characteristics of streams, lakes, shore regions, the regional and local groundwater environments, and existing or proposed water control structures that could influence flood control and plant safety. [Section 2.4](#) includes more detailed information regarding this subject.

e. Demography

Information relating to local and surrounding area population distribution is developed and evaluated by utility and contract personnel. The data is used to determine if requirements are met for establishment of exclusion area, low population zone, and population center distance. [Section 2.1](#) includes more detailed information regarding population around the plant site.

f. Environmental Effects

Monitoring programs are developed to enable the collection of data necessary to determine possible impact on the environment as a result of construction, startup, and operational activities and to establish a baseline from which to evaluate future environmental monitoring.

13AA.1.1.1.1.2 Design of Plant and Ancillary Systems

Responsibility for design and construction of systems outside the power block such as circulating water, service water, switchyard, and secondary fire protection systems is delegated to qualified contractors.

13AA.1.1.1.1.3 Review and Approval of Plant Design Features

Design engineering review and approval are performed in accordance with the reactor technology vendor QA program and [Section 17.1](#). The reactor technology vendor is responsible for design control of the power block. Verification is performed by competent individuals or groups other than those who performed the original design. Design issues arising during construction are addressed and implemented with notifying and communicating changes to the engineering director for review. As systems are tested and approved for turnover and operation, control of design is turned over to plant staff. The engineering director, along with functional managers and staff, assumes responsibility for reviewing and approving modifications, additions, or deletions in plant design features, as well as control of design documentation, in accordance with the operational QA program. Design control becomes the responsibility of the engineering director before loading fuel. During construction, startup, and operation, changes to human-system interfaces of control room design are approved using a human factors engineering evaluation addressed in [Chapter 18](#). See organization charts, [Figures 13.1-201](#), and [13AA-201](#) for reporting relationships.

13AA.1.1.1.1.4 Site Layout With Respect to Environmental Effects and Security Provisions

Site layout was considered when determining the expected environmental effects from construction.

The Physical Security Plan is designed with provisions that meet the applicable NRC regulations. Site layout was considered when developing the Security Plan.

13AA.1.1.1.1.5 Development of Safety Analysis Reports

Information regarding the development of the Final Safety Analysis Report is found in [Chapter 1](#).

13AA.1.1.1.1.6 Review and Approval of Material and Component Specifications

Safety-related material and component specifications of structures, systems, and components designed by the reactor technology vendor are reviewed and approved in accordance with the reactor technology vendor QA program and [Section 17.1](#). Review and approval of items not designed by the reactor vendor are controlled for review and approval by [Section 17.5](#) and the QAPD.

13AA.1.1.1.1.7 Procurement of Materials and Equipment

Procurement of materials during the construction phase is the responsibility of the reactor technology vendor and constructor. The process is controlled by the construction QA programs of these organizations. Oversight of the inspection and receipt of materials process is the responsibility of the manager in charge of QA.

13AA.1.1.1.1.8 Management and Review of Construction Activities

Overall management and responsibility for construction activities is assigned to the executive vice president-engineering, construction and corporate services. The project director new nuclear projects is accountable to the vice president-new nuclear projects for construction activities. See Organization Chart [Figure 13AA-201](#). Monitoring and review of construction activities by utility personnel is a continuous process at the plant site. Contractor performance is monitored to provide objective data to utility management to identify problems early and develop solutions. Monitoring of construction activities verifies that the contractors are in compliance with contractual obligations for quality, schedule, and cost. Monitoring and review of construction activities is divided functionally across the various disciplines of the utility construction staff (e.g., electrical, mechanical, instrumentation and controls [I&C]) and tracked by schedule based on system and major plant components/areas.

After each system is turned over to plant staff, the construction organization relinquishes responsibility for that system. At that time they are responsible for completion of construction activities as directed by plant staff and available to provide support for preoperational and startup testing as necessary.

13AA.1.1.1.2 Startup Activities

The Units 6 & 7 plant general manager reports to the site vice president. The plant general manager, with the aid of those managers who report directly to the plant general manager (see [Figure 13AA-201](#)), is responsible for the plant activities required to transition the unit from the construction phase to the operational phase. These activities include coordinating the turnover to the plant staff of systems from the construction and preoperational testing phase, establishing the plant work management system, implementation of the initial fuel load, the integrated startup testing program and the development and issuance of the associated fuel load and startup procedures.

13AA.1.1.1.2.1 Development of Human Factors Engineering Design Objectives and Design Phase Review of Proposed Control Room Layouts

Human factors engineering (HFE) design objectives are initially developed by the reactor technology vendor in accordance with [Chapter 18](#) of the FSAR and the Design Control Document (DCD). As a collaborative team, personnel from the reactor technology vendor design staff and personnel, including licensed operators, engineers, and I&C technicians from owner and other organizations in the nuclear industry assess the design of the control room and human-machine interfaces (HMIs) to attain safe and efficient plant operation. See [Section 18.2](#) for additional details of HFE program management.

Modifications to the certified design of the control room or HMIs described in the DCD are reviewed in accordance with engineering and site support procedures, as required by [Section 18.2](#), to evaluate the impact to plant safety. The engineering director—new nuclear projects is responsible for the HFE design process and for the design commitment to HFE during construction and throughout the life of the plant as noted in [Subsection 13.1.1.2.1](#). The HFE program is established in accordance with the description and commitments in [Chapter 18](#).

13AA.1.1.1.2.2 Preoperational and Startup Testing

Preoperational and startup testing is conducted by the plant test and operations (PT&O) organization. The PT&O organization, functions, and responsibilities are addressed in [Section 14.2](#). Sufficient numbers of personnel are assigned to perform preoperational and startup testing to facilitate safe and efficient implementation of the testing program. Plant-specific training provides instruction on the administrative controls of the test program. To improve operational

experience, operations and technical staff are used as support in conducting the test program and in reviewing test results.

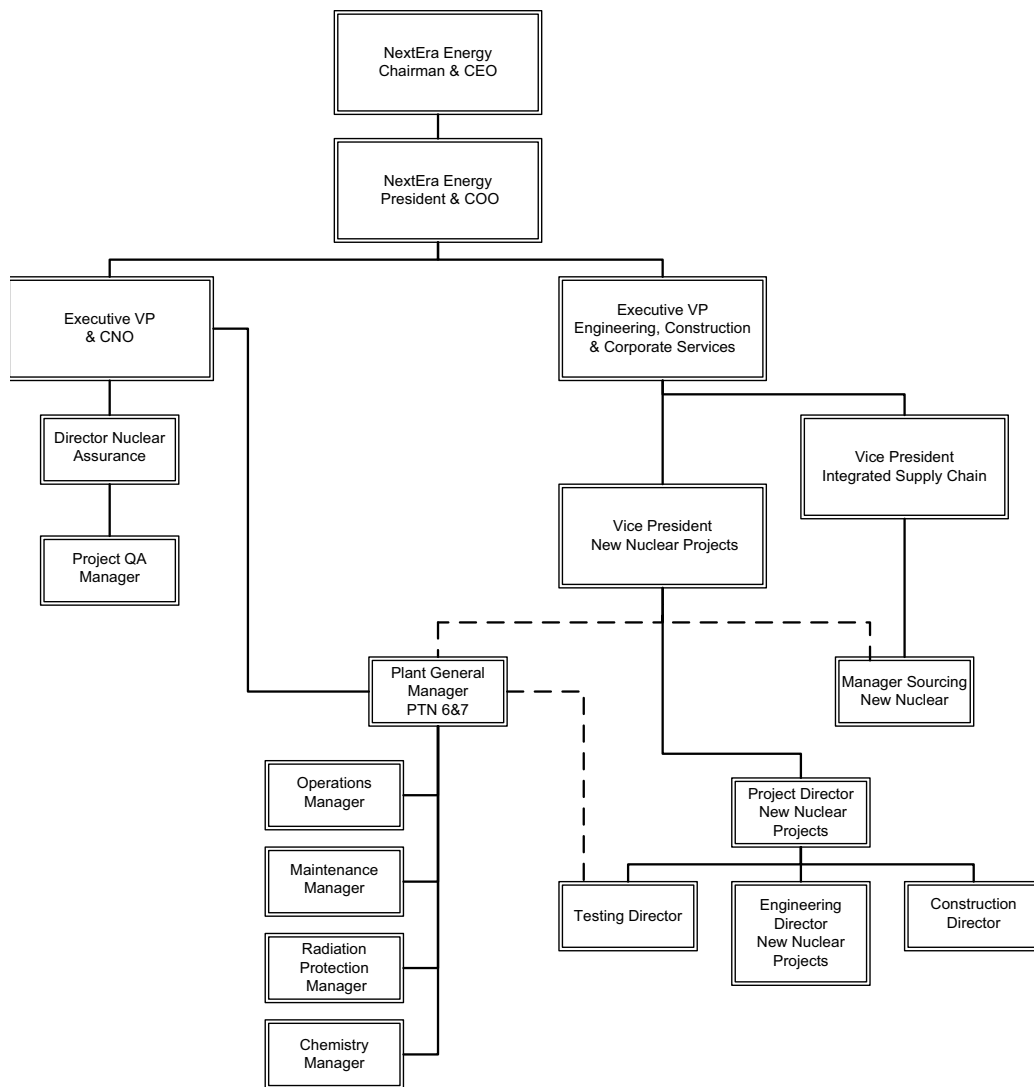
13AA.1.1.1.2.3 Developing and Implementing Staff Recruiting and Training Programs

Staffing plans are developed based on operating plant experience, with input from the reactor technology vendor for safe plant operation as determined by HFE. See [Section 18.6](#). These plans are developed under the direction and guidance of the vice president-new nuclear projects and the site vice president. Staffing plans are completed and manager level positions are filled before preoperational testing is started. Personnel selected to be licensed reactor operators and senior reactor operators, along with other staff necessary to support safe plant operation, are hired with sufficient time available to complete appropriate training programs and to become qualified, and licensed, if required, before fuel is loaded into the reactor vessel. See [Figure 13AA-202](#) for an estimated timeline of hiring requirements for operator and technical staff relative to fuel load.

Because of the dynamic nature of the staffing plans and changes that occur over time, it is expected that specific numbers of personnel on site will change, however, [Table 13.1-201](#) includes the initial estimated number of staff for selected positions and the estimated number of additional positions required for a second unit. Recruiting personnel to fill positions is the shared responsibility of the manager in charge of human resources and the various heads of departments. The training program is described in [Section 13.2](#).

Turkey Point Units 6 & 7
COL Application
Part 2 — FSAR

Figure 13AA-201 Construction Management Organization



Turkey Point Units 6 & 7
 COL Application
 Part 2 — FSAR

Figure 13AA-202 Hiring Schedule for Plant Staff

