

Figure 8.3-1—Electrical Single Line Drawing Legend

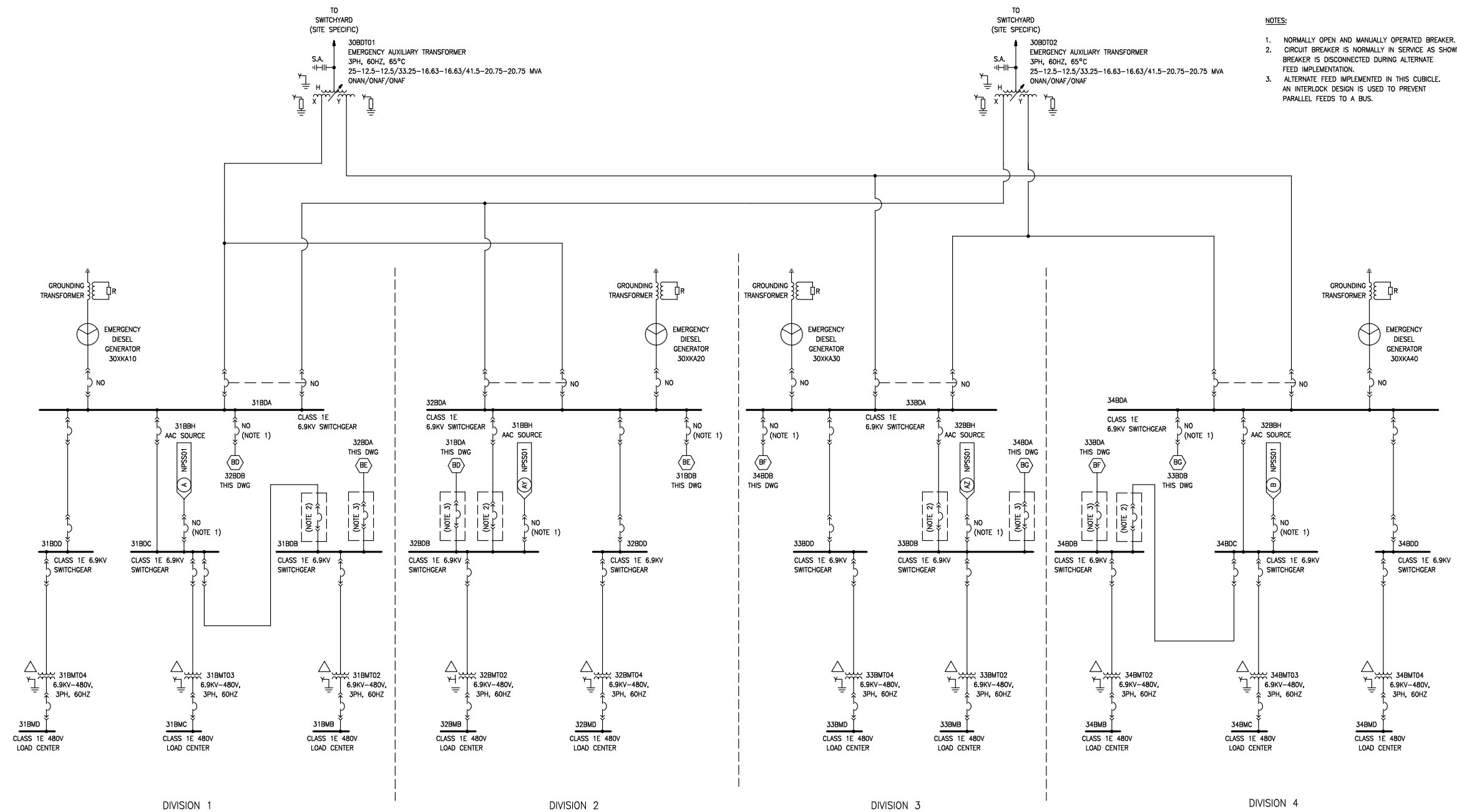
	ELECTRICALLY OPERATED DRAWOUT (EODO) CIRCUIT BREAKER, 3 POLE		WYE CONNECTED, GROUNDED SOLID
	LOW VOLTAGE CIRCUIT BREAKER		WYE CONNECTED, RESISTANCE GROUNDED
	CONNECTOR BETWEEN COMPONENTS ON SEPARATE DRAWINGS		DELTA CONNECTED
	CONNECTOR BETWEEN COMPONENTS ON SAME DRAWING		MOTOR LOAD
	GENERATOR, WYE CONNECTED		STATIC LOAD
	DRY TYPE TRANSFORMER		WYE CONNECTED, HIGH RESISTANCE GROUNDING THROUGH NEUTRAL DISTRIBUTION TRANSFORMER.
	VOLTAGE REGULATING TRANSFORMER		AC TO DC CONVERTER
	OLTC TRANSFORMER ONAN/ONAF/ONAF (SEE NOTE 1)		DC TO DC CONVERTER
	HIGH RESISTANCE GROUNDING THROUGH NEUTRAL DISTRIBUTION TRANSFORMER		INVERTER WITH STATIC BYPASS SWITCH
	FUSED DISCONNECT SWITCH		DIODE
	BATTERY		S.A. SURGE ARRESTER

NOTE:

1. THE ONAN/ONAF/ONAF NOTATION SHOWS THAT THE TRANSFORMER HAS TWO SETS OF FANS FOR COOLING. SEE IEEE C57.12 FOR ADDITIONAL INFORMATION ON TRANSFORMER RATINGS ASSOCIATED WITH COOLING METHODS.

LEGEND01T2

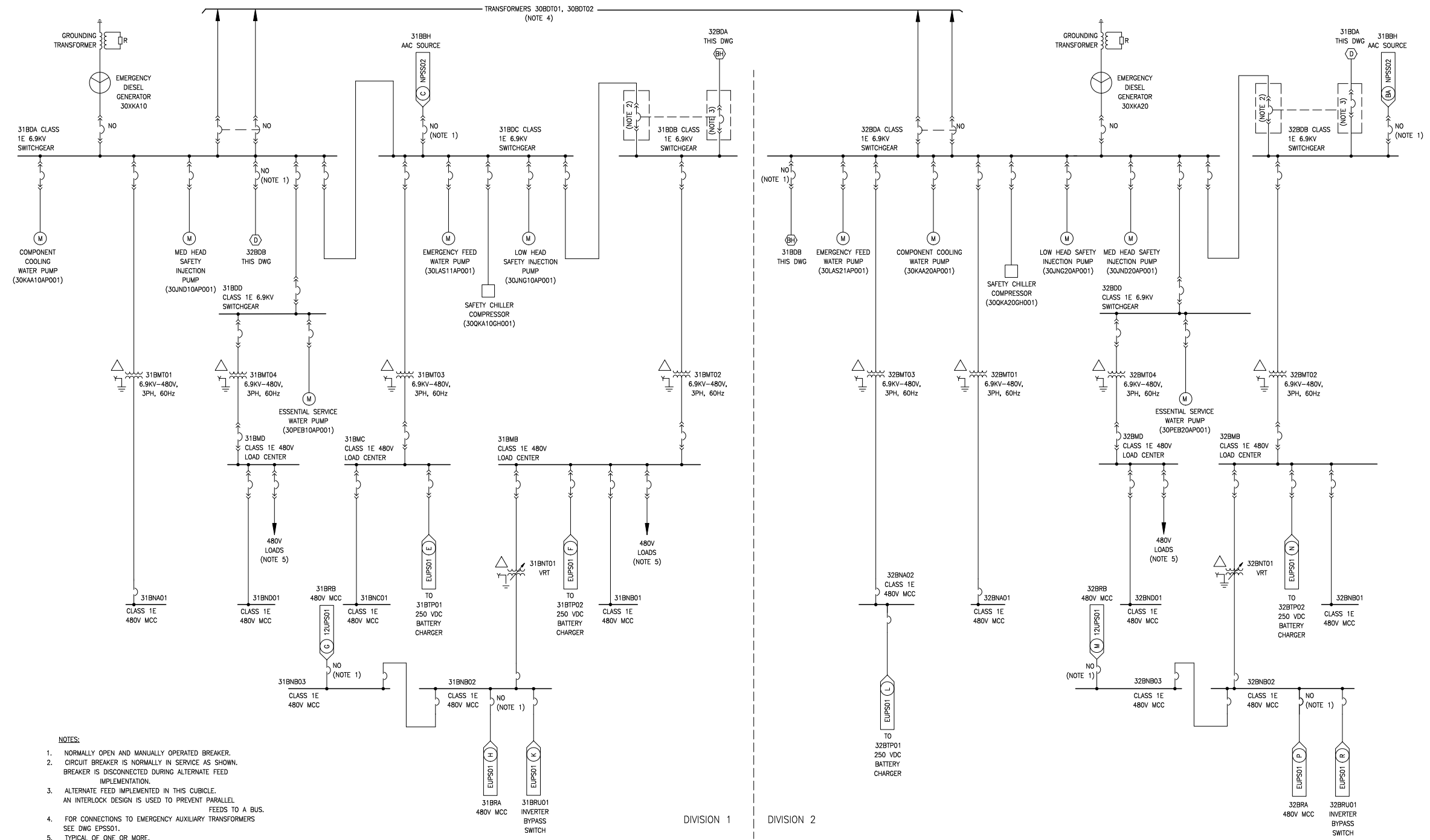
Figure 8.3-2—Emergency Power Supply System Single Line Drawing
Sheet 1 of 3



- NOTES:
1. NORMALLY OPEN AND MANUALLY OPERATED BREAKER. CIRCUIT BREAKER IS NORMALLY IN SERVICE AS SHOWN. BREAKER IS DISCONNECTED DURING ALTERNATE FEED IMPLEMENTATION.
 2. ALTERNATE FEED IMPLEMENTED IN THIS CUBICLE. AN INTERLOCK DESIGN IS USED TO PREVENT PARALLEL FEEDS TO A BUS.

REV 002
EPSS01T2

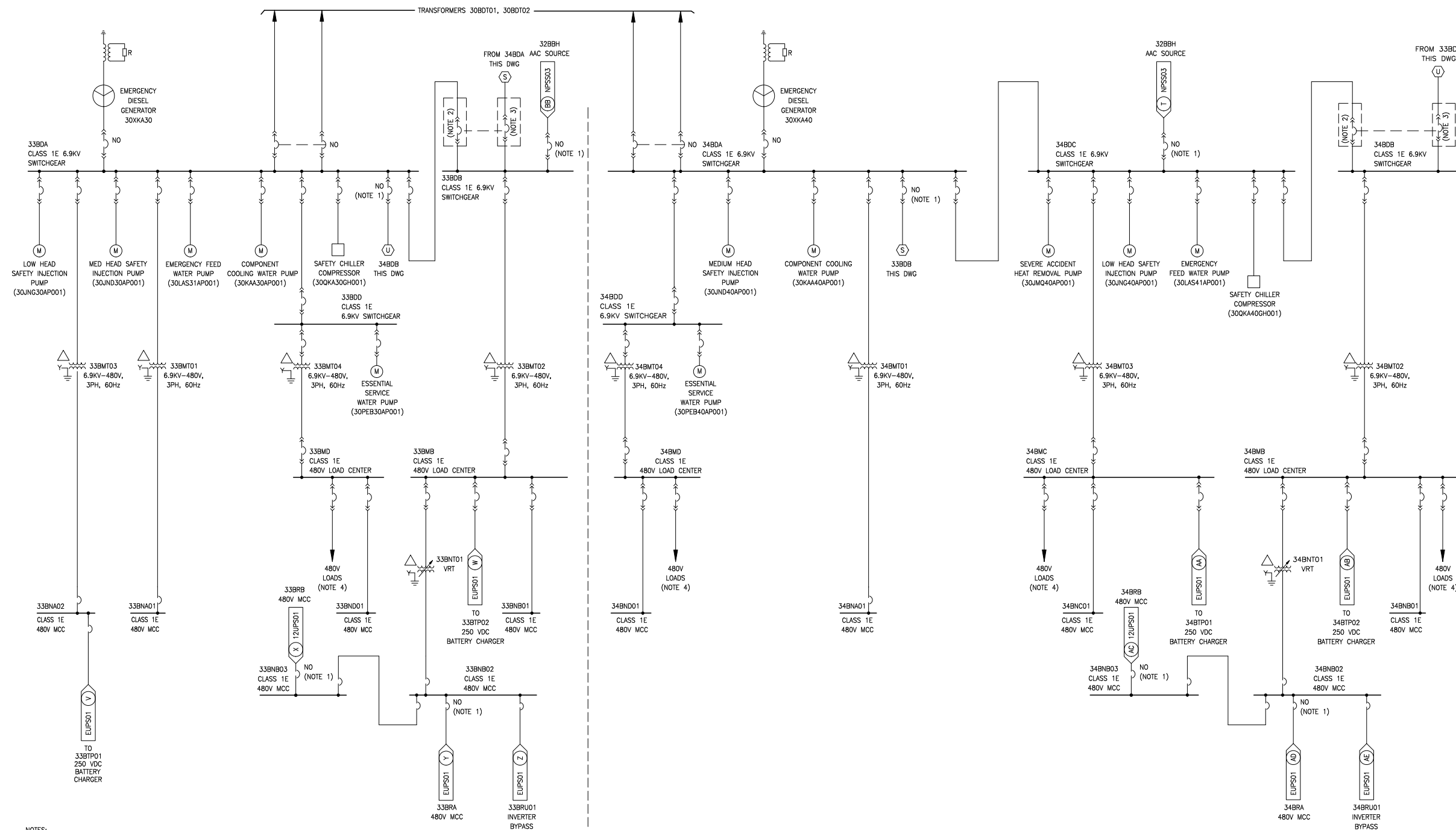
Figure 8.3-2—Emergency Power Supply System Single Line Drawing
Sheet 2 of 3



- NOTES:
1. NORMALLY OPEN AND MANUALLY OPERATED BREAKER.
 2. CIRCUIT BREAKER IS NORMALLY IN SERVICE AS SHOWN. BREAKER IS DISCONNECTED DURING ALTERNATE FEED IMPLEMENTATION.
 3. ALTERNATE FEED IMPLEMENTED IN THIS CUBICLE. AN INTERLOCK DESIGN IS USED TO PREVENT PARALLEL FEEDS TO A BUS.
 4. FOR CONNECTIONS TO EMERGENCY AUXILIARY TRANSFORMERS SEE DWG EPSS01.
 5. TYPICAL OF ONE OR MORE.

REV 002
EPSS02T2

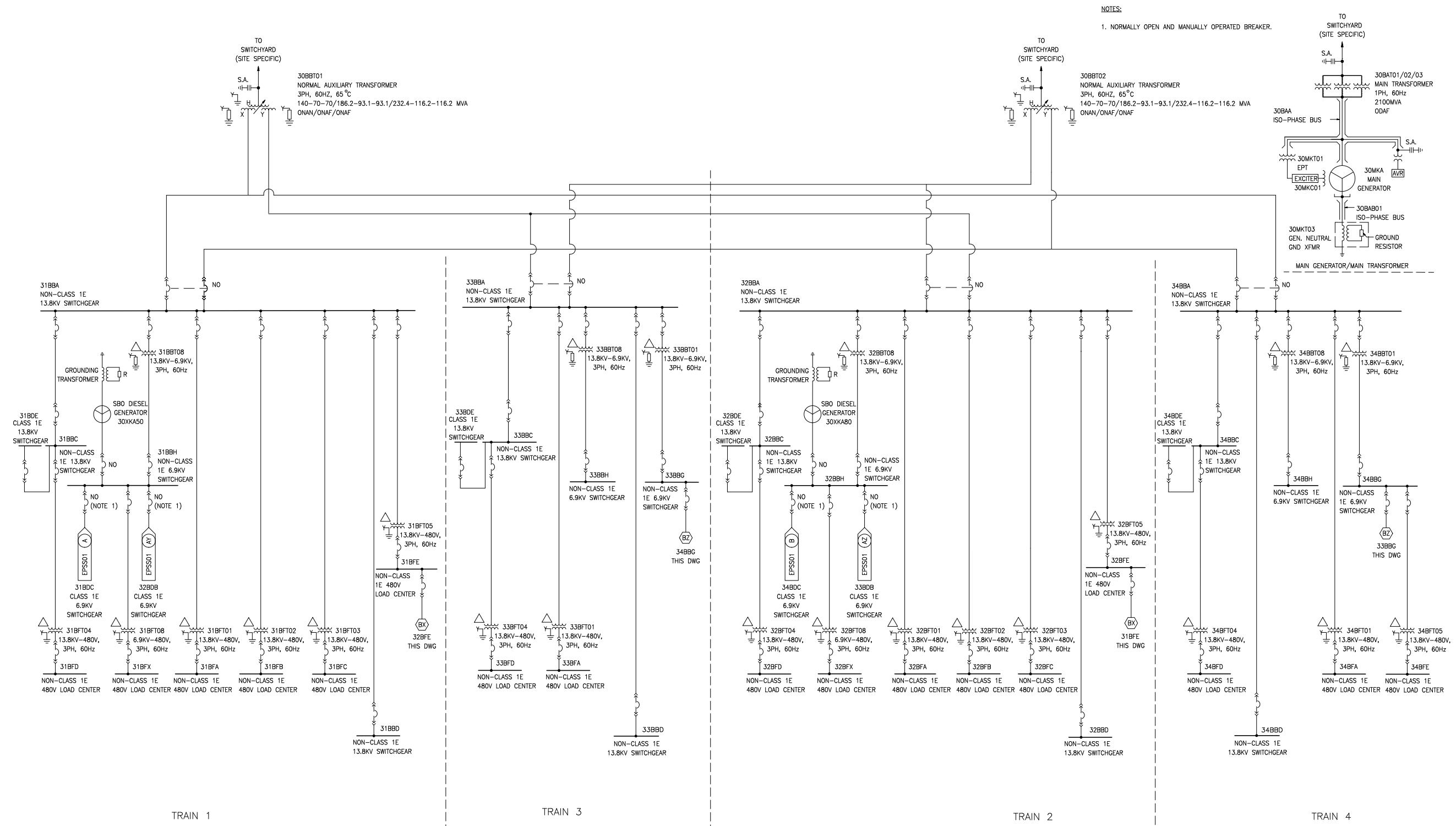
Figure 8.3-2—Emergency Power Supply System Single Line Drawing
Sheet 3 of 3



- NOTES:
1. NORMALLY OPEN AND MANUALLY OPERATED BREAKER. CIRCUIT BREAKER IS NORMALLY IN SERVICE AS SHOWN. BREAKER IS DISCONNECTED DURING ALTERNATE FEED IMPLEMENTATION.
 2. ALTERNATE FEED IMPLEMENTED IN THIS CUBICLE. AN INTERLOCK DESIGN IS USED TO PREVENT PARALLEL FEEDS TO A BUS.
 3. TYPICAL OF ONE OR MORE.

REV 002
EPSS03T2

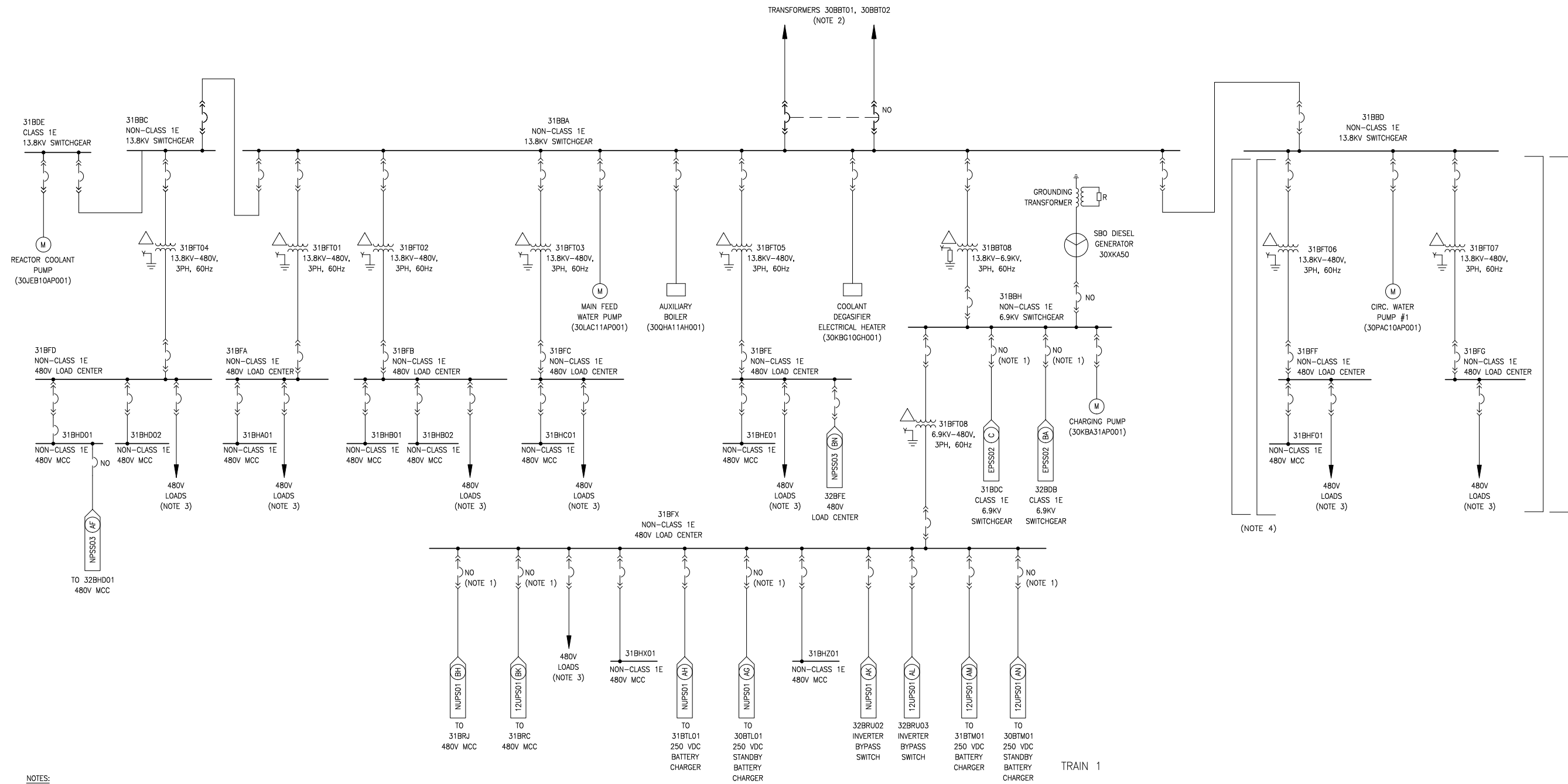
Figure 8.3-3—Normal Power Supply System Single Line Drawing
Sheet 1 of 5



NOTES:
1. NORMALLY OPEN AND MANUALLY OPERATED BREAKER.

REV 002
NPSS01T2

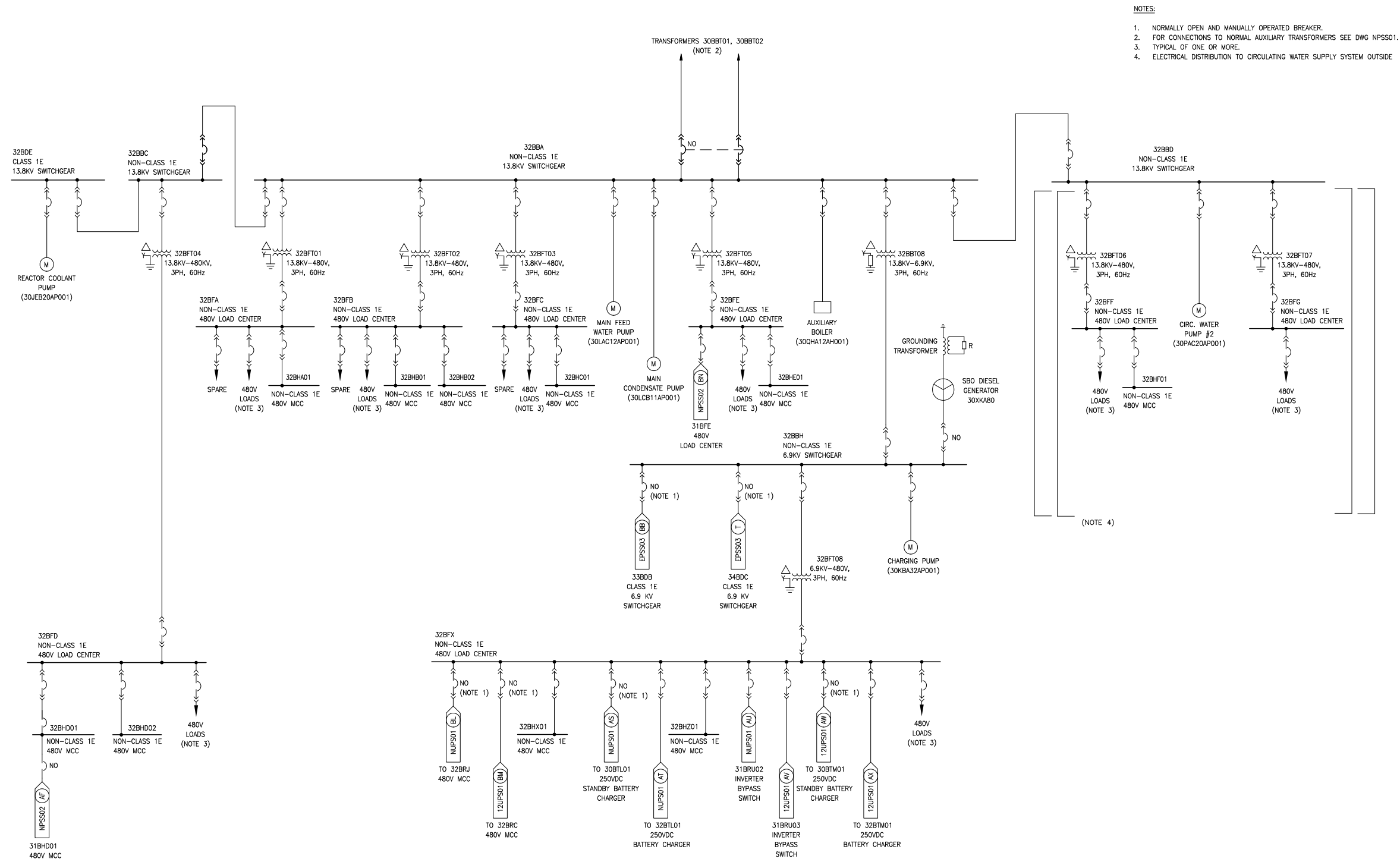
Figure 8.3-3—Normal Power Supply System Single Line Drawing
Sheet 2 of 5



NOTES:

1. NORMALLY OPEN AND MANUALLY OPERATED BREAKER.
2. FOR CONNECTIONS TO NORMAL AUXILIARY TRANSFORMERS SEE DWG NPSS01.
3. TYPICAL OF ONE OR MORE.
4. ELECTRICAL DISTRIBUTION TO CIRCULATING WATER SUPPLY SYSTEM OUTSIDE THE TURBINE BUILDING IS CONCEPTUAL DESIGN INFORMATION.

Figure 8.3-3—Normal Power Supply System Single Line Drawing
Sheet 3 of 5

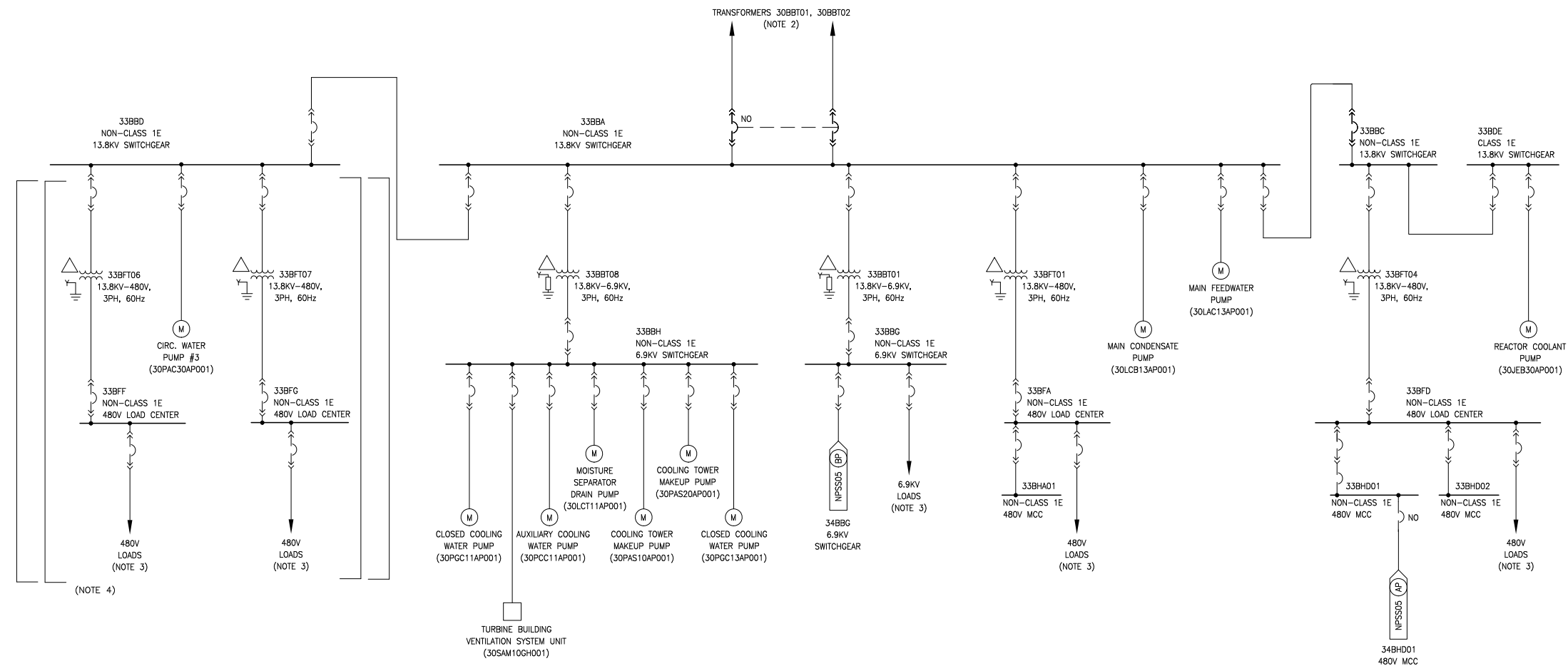


- NOTES:
1. NORMALLY OPEN AND MANUALLY OPERATED BREAKER.
 2. FOR CONNECTIONS TO NORMAL AUXILIARY TRANSFORMERS SEE DWG NPSS01.
 3. TYPICAL OF ONE OR MORE.
 4. ELECTRICAL DISTRIBUTION TO CIRCULATING WATER SUPPLY SYSTEM OUTSIDE

TRAIN 2

REV 002
NPSS0312

Figure 8.3-3—Normal Power Supply System Single Line Drawing
Sheet 4 of 5



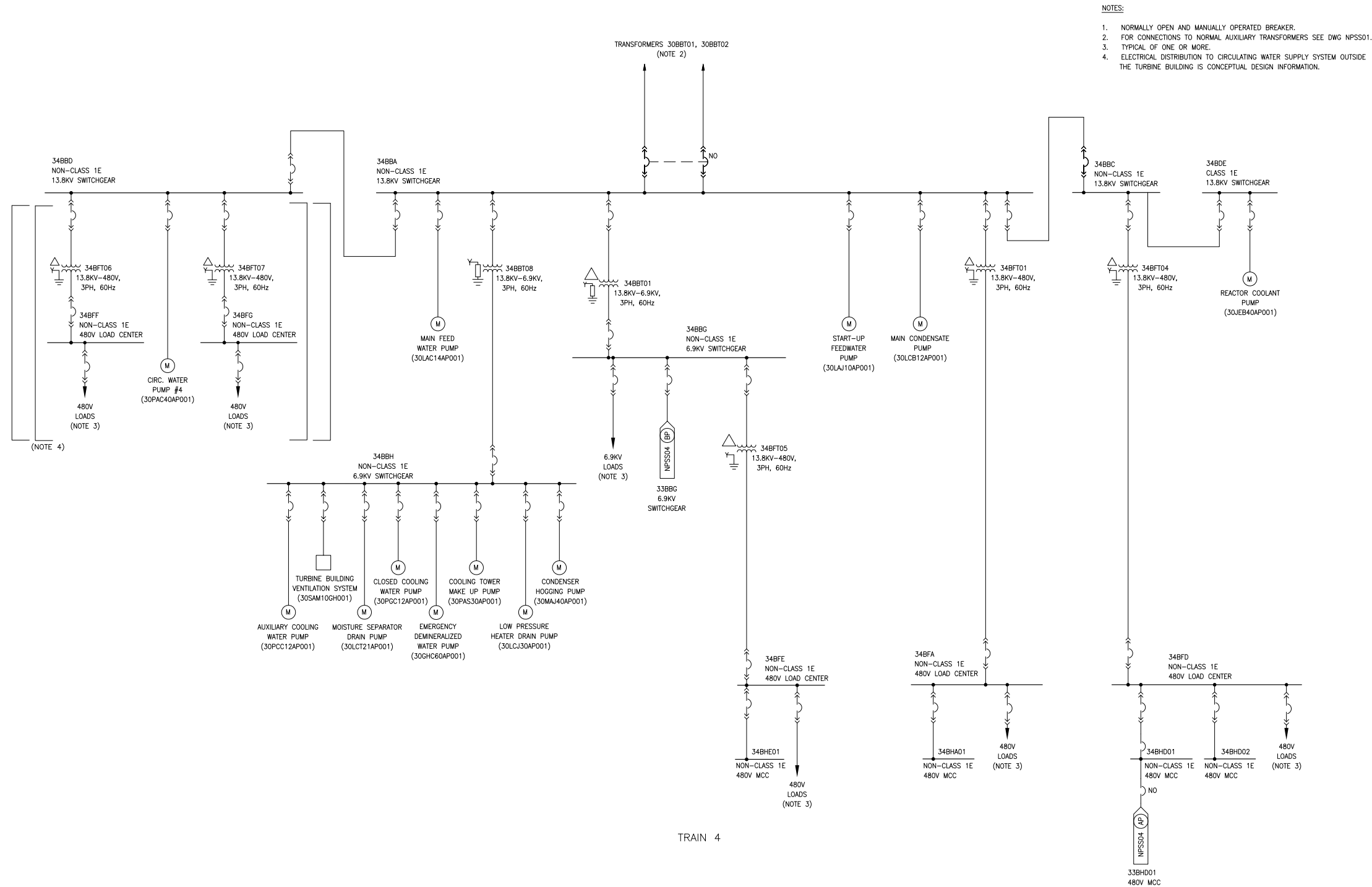
TRAIN 3

NOTES:

1. NORMALLY OPEN AND MANUALLY OPERATED BREAKER.
2. FOR CONNECTIONS TO NORMAL AUXILIARY TRANSFORMERS SEE DWG NPSS01.
3. TYPICAL OF ONE OR MORE.
4. ELECTRICAL DISTRIBUTION TO CIRCULATING WATER SUPPLY SYSTEM OUTSIDE THE TURBINE BUILDING IS CONCEPTUAL DESIGN INFORMATION.

REV 002
NPSS04T2

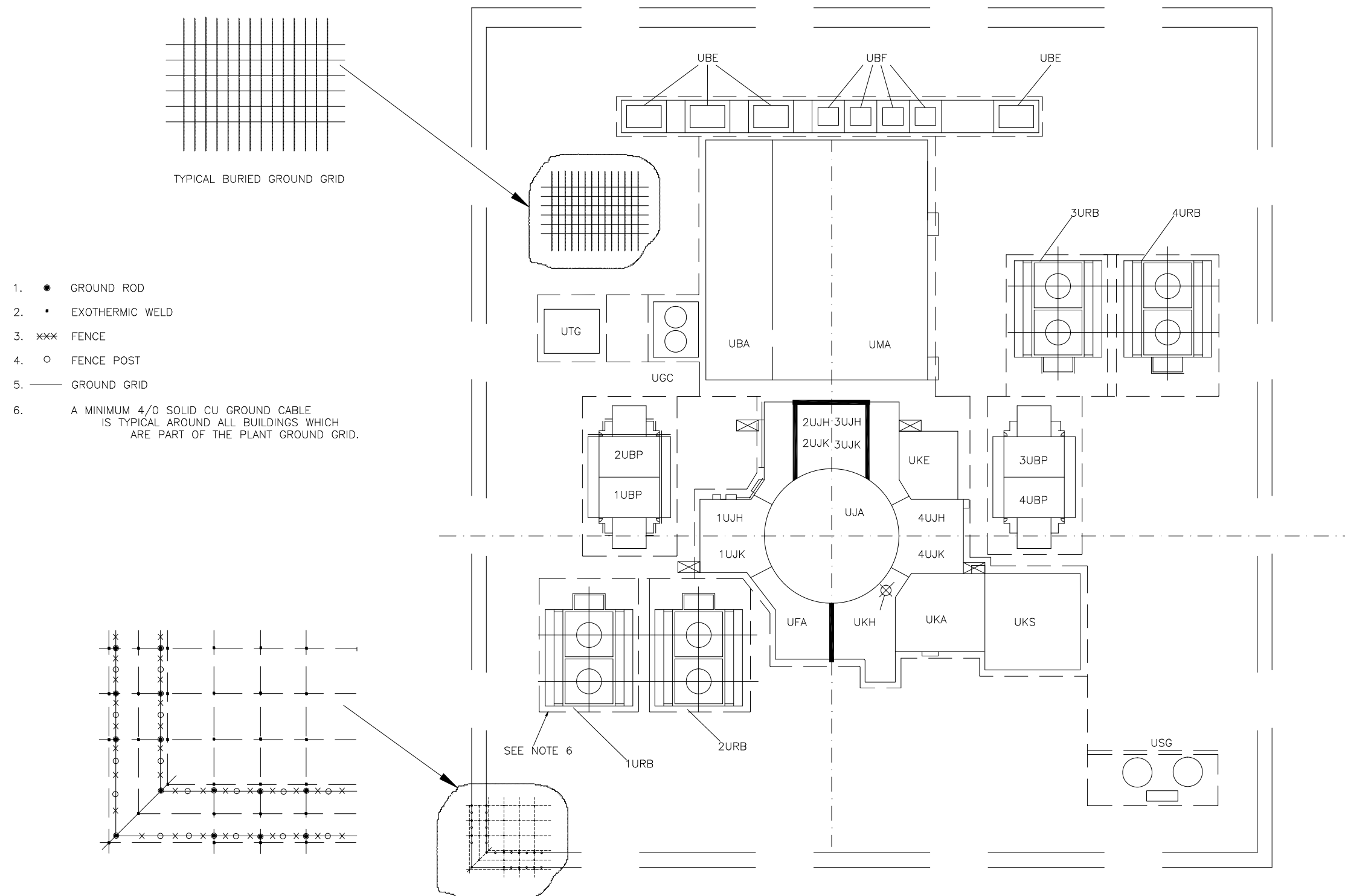
Figure 8.3-3—Normal Power Supply System Single Line Drawing
Sheet 5 of 5



- NOTES:
1. NORMALLY OPEN AND MANUALLY OPERATED BREAKER.
 2. FOR CONNECTIONS TO NORMAL AUXILIARY TRANSFORMERS SEE DWG NPSS01.
 3. TYPICAL OF ONE OR MORE.
 4. ELECTRICAL DISTRIBUTION TO CIRCULATING WATER SUPPLY SYSTEM OUTSIDE THE TURBINE BUILDING IS CONCEPTUAL DESIGN INFORMATION.

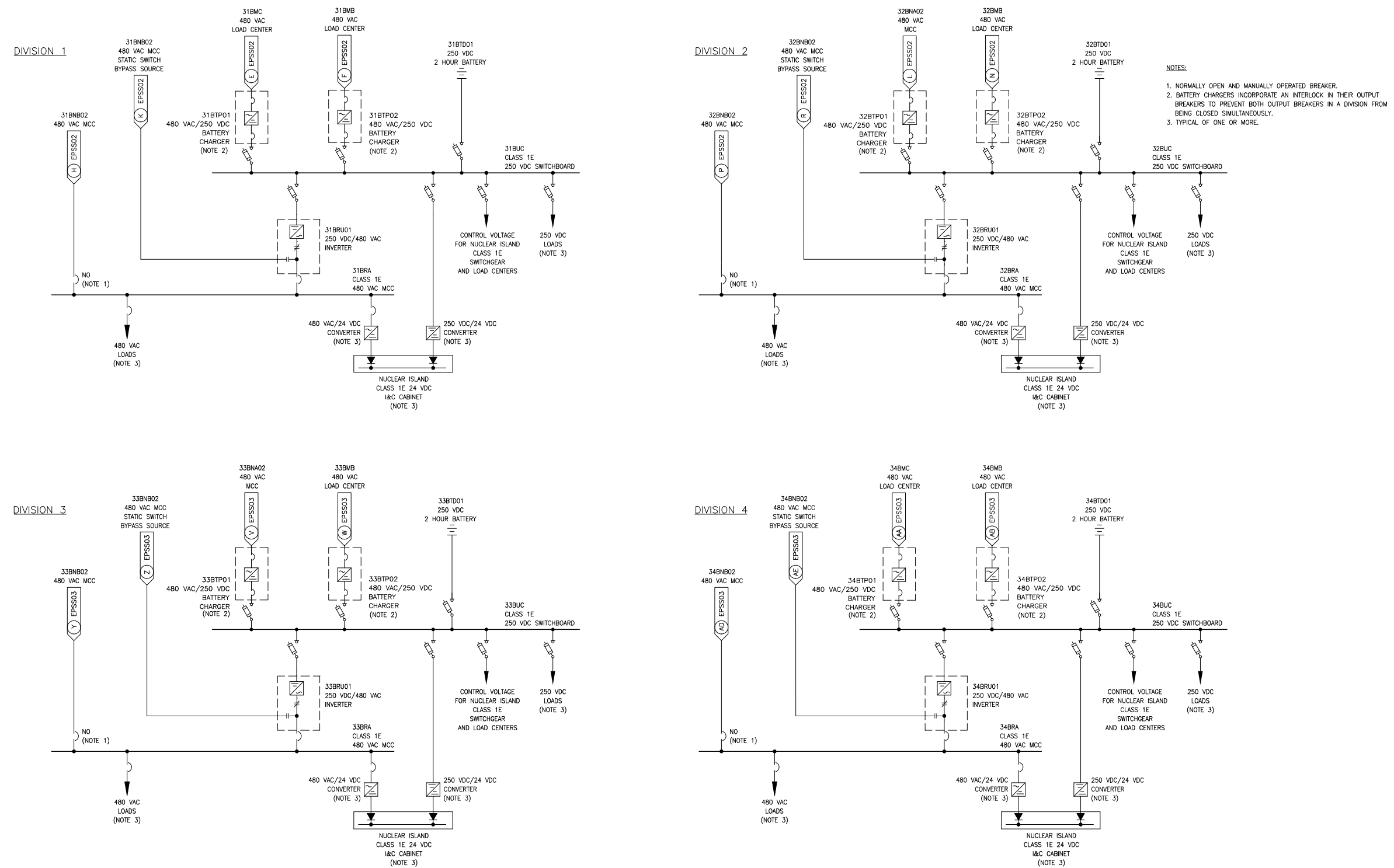
NPSS05T2

Figure 8.3-4—[[Typical Station Grounding Grid]]



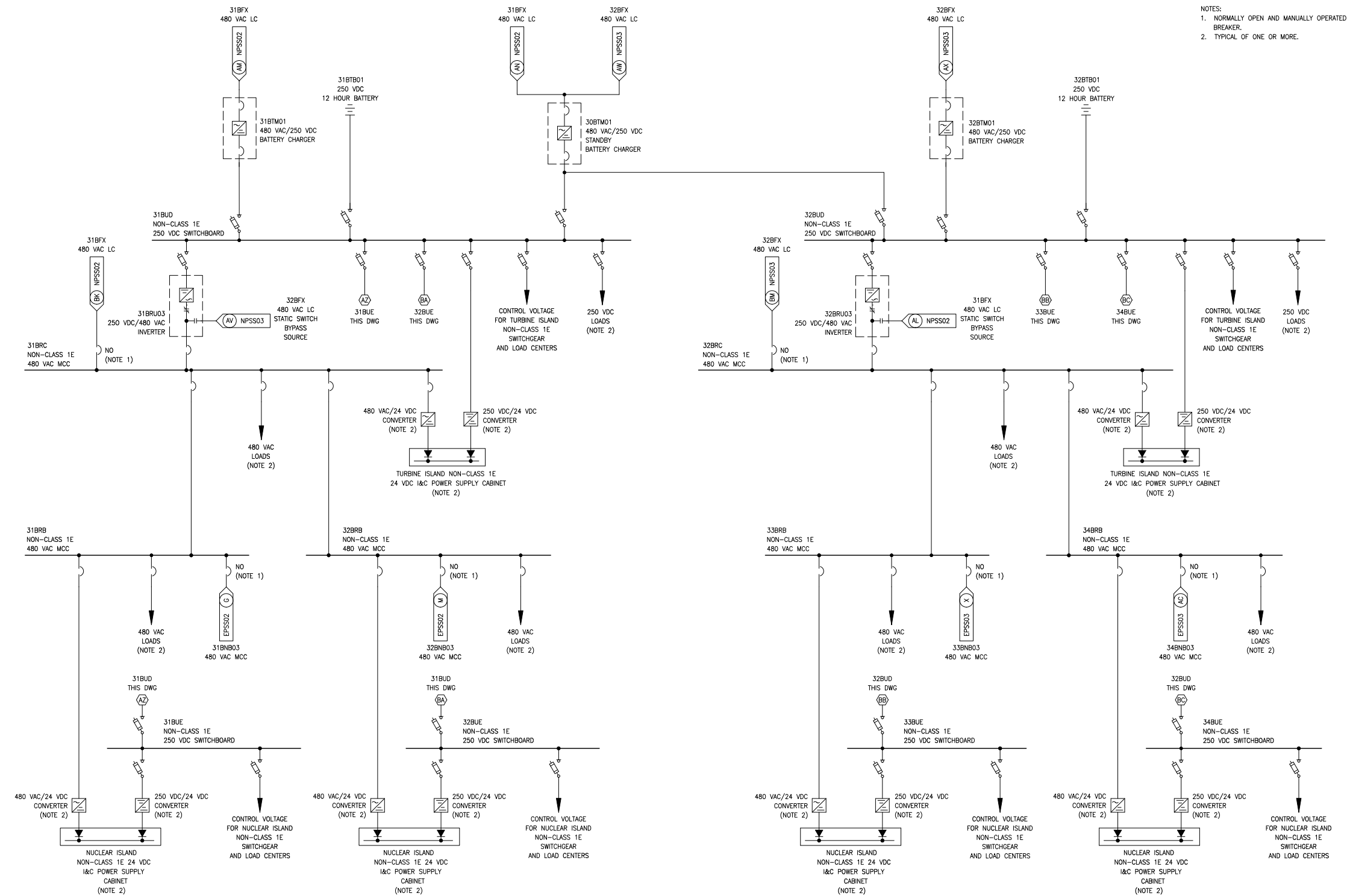
REV 002
 GRD01T2

Figure 8.3-5—Class 1E Uninterruptible Power Supply System Single Line Drawing



REV 002
EUPS01T2

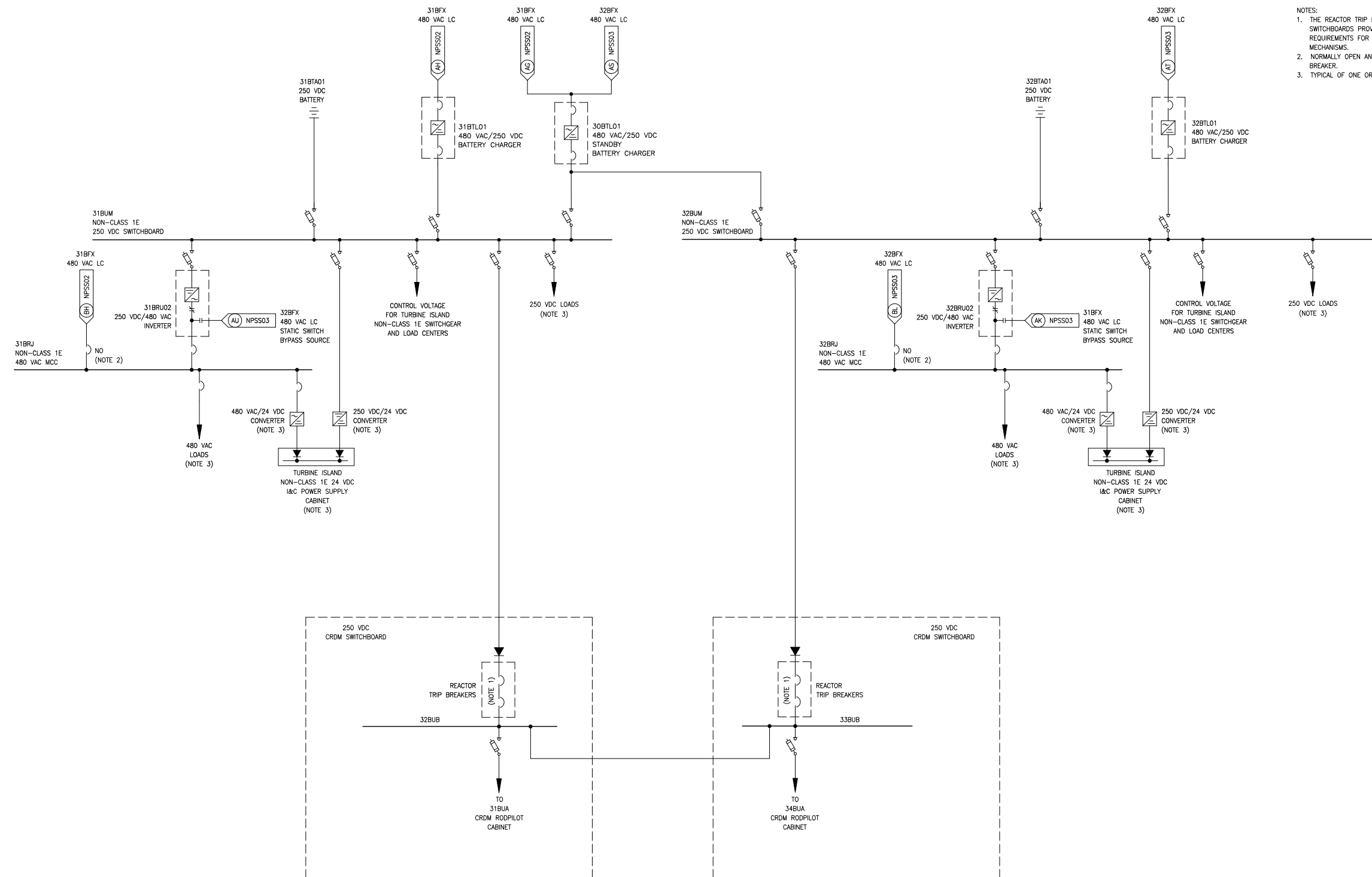
Figure 8.3-6—12-Hour Uninterruptible Power Supply System Single Line Drawing



NOTES:
 1. NORMALLY OPEN AND MANUALLY OPERATED BREAKER.
 2. TYPICAL OF ONE OR MORE.

REV 002
 12UPS01T2

Figure 8.3-7—Non-Class 1E Uninterruptible Power Supply System Single Line Drawing



- NOTES:
1. THE REACTOR TRIP BREAKERS AND 250 VDC SWITCHBOARDS PROVIDE SAFETY-RELATED TRIP REQUIREMENTS FOR THE CONTROL ROD DRIVE MECHANISMS.
 2. NORMALLY OPEN AND MANUALLY OPERATED BREAKER.
 3. TYPICAL OF ONE OR MORE.

REV 002
NUPS01T2