

STEAM AND FEEDWATER SYSTEM

Table with columns: SAMPLE NO., DESIGNATION, DWG, TAKE-OFF, RETURN, CONST. TYPE, QTY. Lists various steam and feedwater system components like heaters, pumps, tanks, and filters.

REACTOR PRIMARY COOLANT AND RADWASTE SYSTEM

Table with columns: SAMPLE NO., DESIGNATION, DWG, TAKE-OFF, RETURN, CONST. TYPE, QTY., NUCLEAR CLASS, SEAM CLASS. Lists reactor primary coolant and radwaste system components like demineralizers, tanks, and pumps.

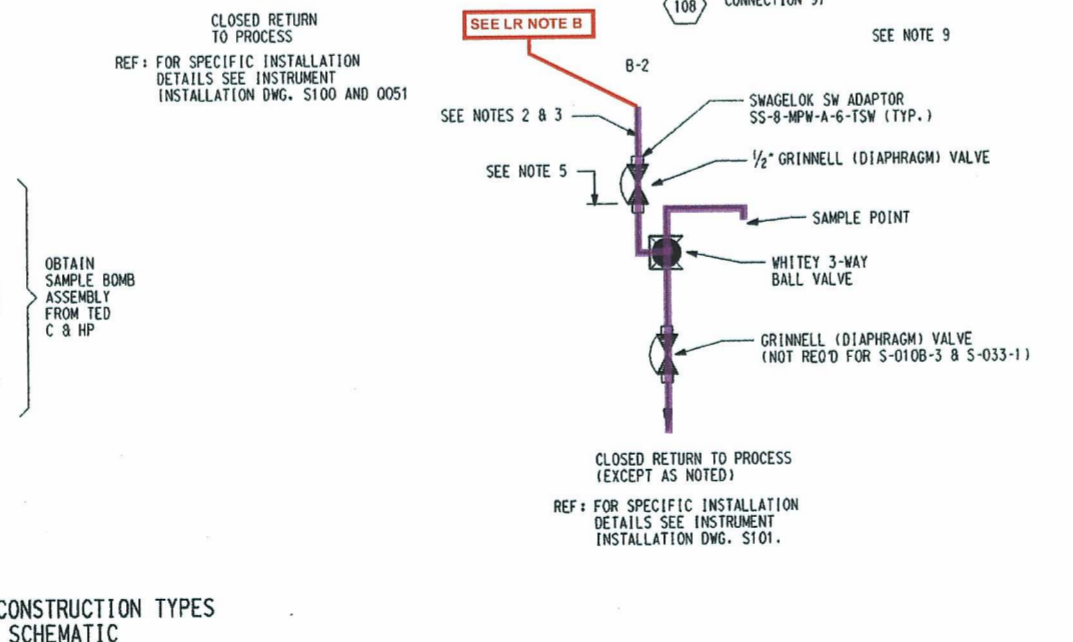
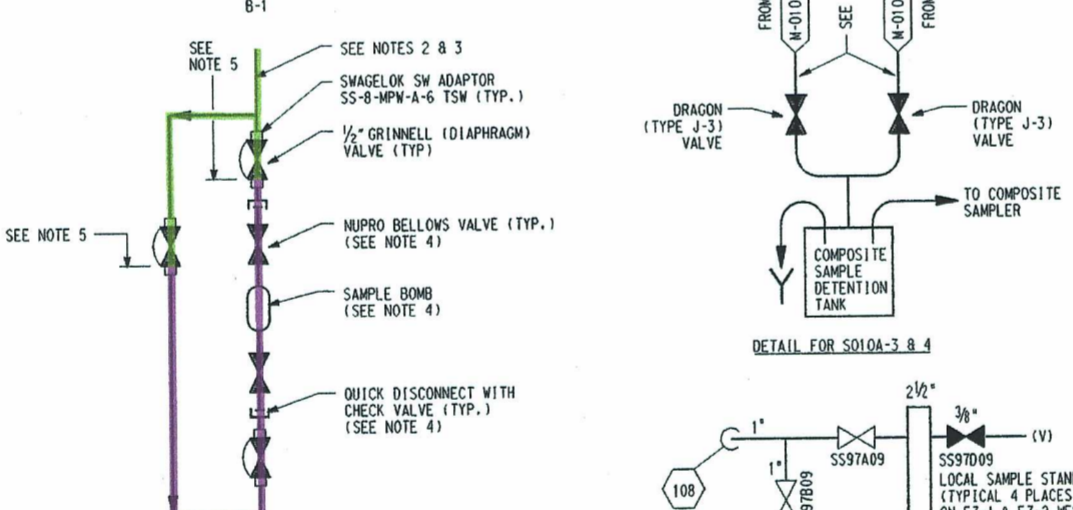
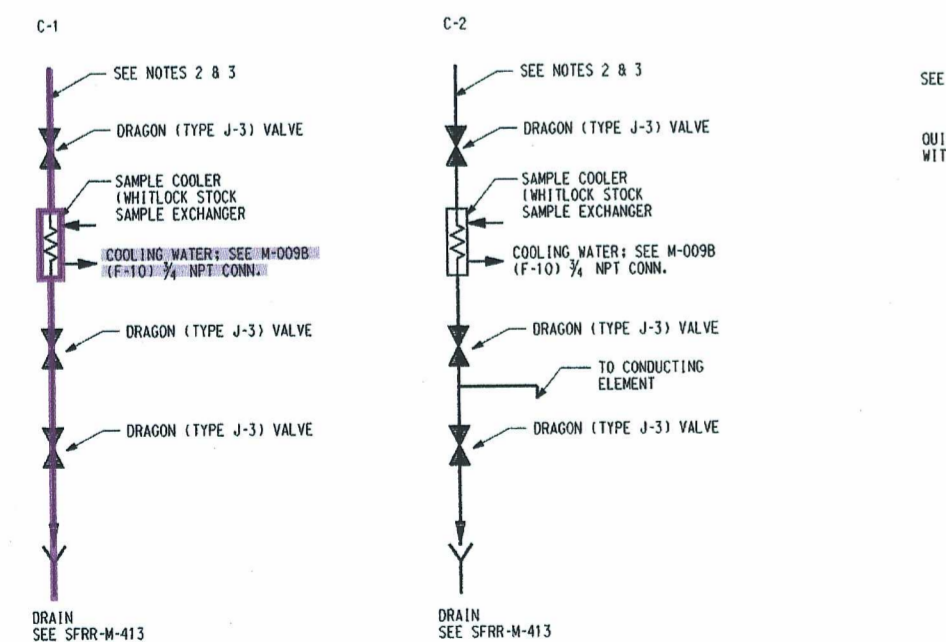
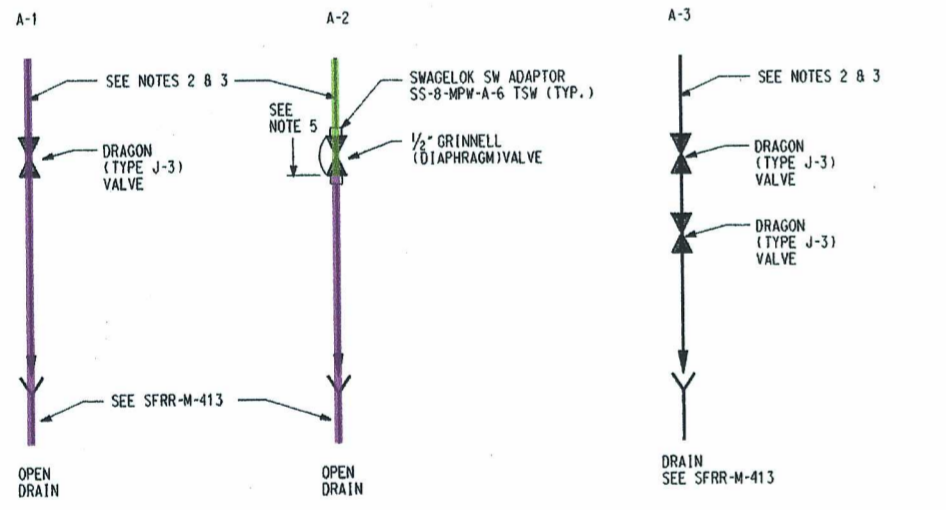
* MAKE-UP WATER TREATMENT SYSTEM

Table with columns: SAMPLE NO., SAMPLE SINK I.D. NO., DESIGNATION, DWG, TAKE-OFF, QTY. Lists make-up water treatment system components like caustic dilute, ion exchange, and carbon filters.

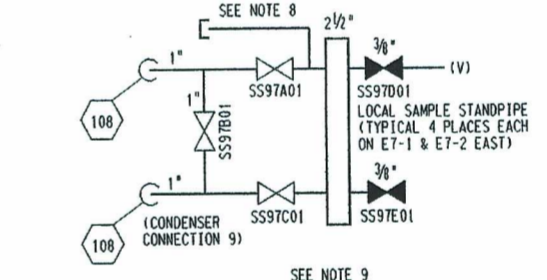
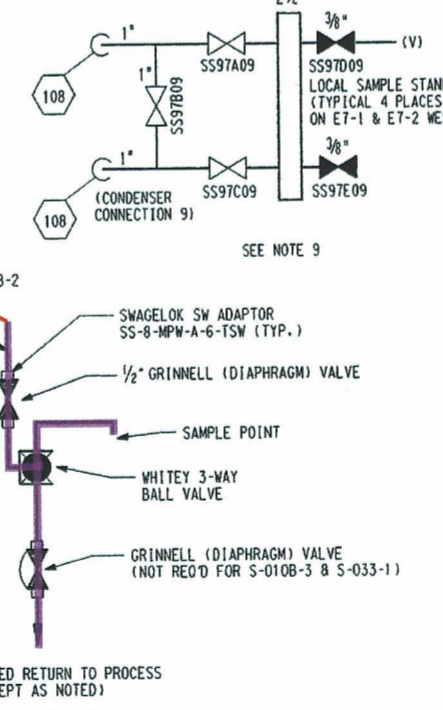
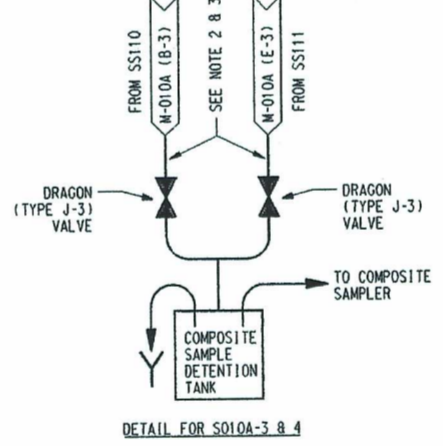
* CONNECTIONS LOCATED ON VENDOR SUPPLIED SAMPLE SINK

CIRCULATION WATER SYSTEM

Table with columns: SAMPLE NO., DESIGNATION, DWG, TAKE-OFF, CONST. TYPE, QTY. Lists circulation water system components like condenser water, boiler feed pumps, and tanks.



SAMPLE CONSTRUCTION TYPES SCHEMATIC



- NOTES: 1. FOR OTHER NOTES SEE DWG. M-042A. 2. FOR SAMPLE TUBING INSTALLATION PRACTICE SEE SPECIFICATION 7749-M-329 SECTION 1.6.4. 3. SAMPLE TUBING SHALL BE 3/4" O.D. X 0.065" SEAMLESS STAINLESS STEEL, SA-213 GR. 304. 4. FOR SAMPLE BOMB ASSEMBLY SEE SPECIFICATION 7749-M-353 BECHTEL VENDOR PRINT 7749 M53-1. 5. SAMPLE TUBING TO AND INCLUDING THIS VALVE SHALL BE SEISMICALLY SUPPORTED AND/OR LISTED AS INDICATED IN TABLES. 6. THIS SAMPLE TO BE A SAMPLE POINT PER INSTALLATION DETAIL 0048. 7. THESE SAMPLE LINES TO SHARE/TIE INTO ONE COOLER. 8. THIS CONNECTION OCCURS ONLY AT STANDPIPE SET 05. 9. STANDPIPE/VALVE SETS ARE NUMBERED NORTH TO SOUTH PER TABLE BELOW; ALSO REFER TO STANDPIPE TYPICAL FOR VALVE LETTER IDENTITIES (LOCAL). TABLE OF SS97 SAMPLING VALVES SETS CONDENSER VALVE AT SAMPLER SAMPLER 01 TO 04 E7-2 EAST SIDE SS97 NE C2207 05 TO 08 E7-1 EAST SIDE SS97 SE C2206 09 TO 12 E7-2 WEST SIDE SS97 NW C2407 13 TO 16 E7-1 WEST SIDE SS97 SW C2406 N/A CROSSLINER SS97 XO C2409 10. POSITIONABLE COMPONENTS FOR SAMPLE CONSTRUCTION TYPES A-1, 2, & 3; B-1 & 2; C-1 & 2; AND D-1 ARE SHOWN IN AN ACCEPTABLE LINE-UP. THE ACTUAL FIELD LINE-UP MAY VARY AND IS CONTROLLED BY PROCEDURES. 11. ABANDONED IN PLACE (S-010B-3). REFERENCE WID 95-0050.

LR NOTES: A. FOR GENERAL LICENSE RENEWAL NOTES REFER TO LR-M001-01. B. FOR S-033-1, HIGHLIGHTING SHOULD BE GREEN TO THE NOTE 5 BOUNDARY.

LICENSE RENEWAL BOUNDARY DRAWING LR-M042B REV. 1

SYSTEMS SHOWN ON THIS DRAWING: 23. SAMPLING

BECHTEL COMPANY GAITHERSBURG, MARYLAND DAVIS-BESSE NUCLEAR POWER STATION THE TOLEDO EDISON COMPANY THE CLEVELAND ELECTRIC ILLUMINATING COMPANY

PIPING & INSTRUMENT DIAGRAM SAMPLING SYSTEM SH. 2 LOCAL GRAB SAMPLING

Table with columns: JOB NO., DRAWING NO., REV. Values: 7749, M-042B, 35

D-73

010973