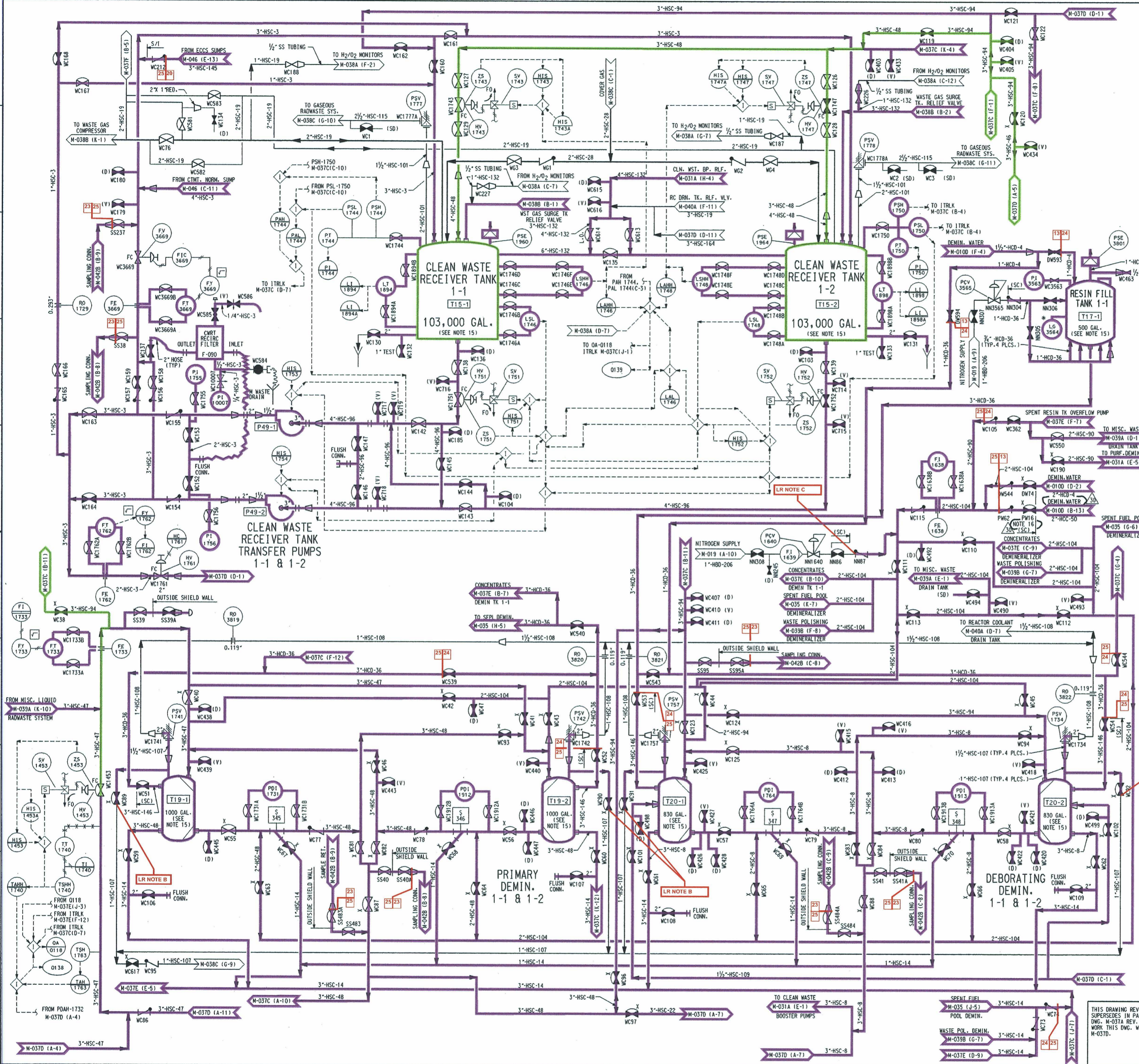


A
B
C
D
E
F
G
H
J
K
1
2
3
4
5
6
7
8
9
10
11



- NOTES:**
- UNLESS OTHERWISE NOTED, ALL DRAIN CONNECTIONS ARE 1" AND ALL VENT CONNECTIONS ARE 3/4". ALL SAMPLE CONNECTIONS ARE 3/4" TO FIRST ISOLATION VALVE, THEN 1/2" SS TUBING. LINE IDENTIFICATION IS THE SAME AS HEADER.
 - FOR GENERAL NOTES, PIPING SYMBOLS, AND P.81.D. INDEX SEE DWG. M-001.
 - FOR INSTRUMENTATION SYMBOLS SEE DWG. M-002.
 - POSITIONABLE COMPONENTS FOR THIS SYSTEM ARE SHOWN IN AN ACCEPTABLE LINE UP. THE ACTUAL FIELD LINE UP MAY VARY AND IS CONTROLLED BY PROCEDURES.
 - DELETED.
 - PIPING TO DE-3878 & D-3879 MUST NOT CONTAIN POSSIBLE AIR POCKETS.
 - DELETED.
 - DELETED.
 - DELETED.
 - ALL PIPING AND VALVES WHICH CARRY CONCENTRATED EVAP. BOTTOMS AND WHICH ARE OUTSIDE HEATED AREAS WILL HAVE REDUNDANT HEAT TRACING.
 - ALL MANUAL PROCESS VALVES IN HSC PIPING LOCATED INSIDE RADIOACTIVE AREAS WILL HAVE REMOTE OPERATORS LOCATED OUTSIDE OF THE RADIOACTIVE AREA.
 - DELETED.
 - FOR HEAT TRACING INSTRUMENTATION AND DETAILS SEE THERMON DWG. T4-147A.
 - THE ONLY VENT OR DRAIN LINE CAPS REQUIRED TO BE SHOWN ON PIPING AND INSTRUMENTATION DIAGRAMS ARE THOSE CONTROLLED UNDER DB-09-00009 (FORMERLY AD1839.03). THE ACTUAL TERMINATION OF ALL OTHER VENTS OR DRAINS ARE NOT SHOWN AND INSTEAD, AN OPEN ENDED PIPE IS DISPLAYED.
 - WHERE NOTED THE TANK CAPACITY IS NOMINAL. WHERE APPLICABLE, SEE DB-PF-06705 (TANK LEVEL CALIBRATION CURVES) FOR INDICATED LEVEL VS. VOLUME RELATIONSHIP. (REF: PCAOR 96-0976).
 - VALVE PW16 IS DISABLED CLOSED. REFERENCE MOD 95-0050.
 - SOME VALVES NUMBERED WITH A "PW" DESIGNATION (I.e., PW32) ARE BEING USED TO SUPPLY DEMINERALIZED WATER. REFERENCE MOD 95-0050.

LR NOTE A:
A. FOR GENERAL LICENSE RENEWAL NOTES REFER TO LR-M001
B. COMPONENTS LOCATED DOWNSTREAM FROM NORMALLY CLOSED DRAIN VALVES CONTAIN AMBIENT AIR, ARE NOT A CONCERN FOR LEAK OR SPRAY CONSIDERATIONS, AND ARE NOT IN SCOPE.
C. THIS LINE IS PART OF THE NITROGEN SUPPLY SYSTEM AND DOES NOT CONTAIN LIQUID. THEREFORE, THIS LINE IS NOT A CONCERN FOR LEAK OR SPRAY CONSIDERATIONS AND IS NOT IN SCOPE.

LICENSE RENEWAL BOUNDARY DRAWING
LR-M037C REV. 0

SYSTEMS SHOWN ON THIS DRAWING:
13: COMPONENT COOLING & DEMINERALIZED WATER STORAGE
20: STATION PLUMBING, DRAINS, & PUMPS
23: SAMPLING
24: NONSAFETY AFFECTING SAFETY
25: BORON RECOVERY

BECHTEL ASSOCIATES
PROFESSIONAL CORPORATION (OHIO)
611 THURSDAY, MARYLAND
DAVIS-BESSE NUCLEAR POWER STATION
UNIT NO. 1
THE TOLEDO EDISON COMPANY

CLEAN LIQUID RADIOACTIVE WASTE SYSTEM		
JOB NO.	DRAWING NO.	REV.
12501	M-037C	30

D-57 012957