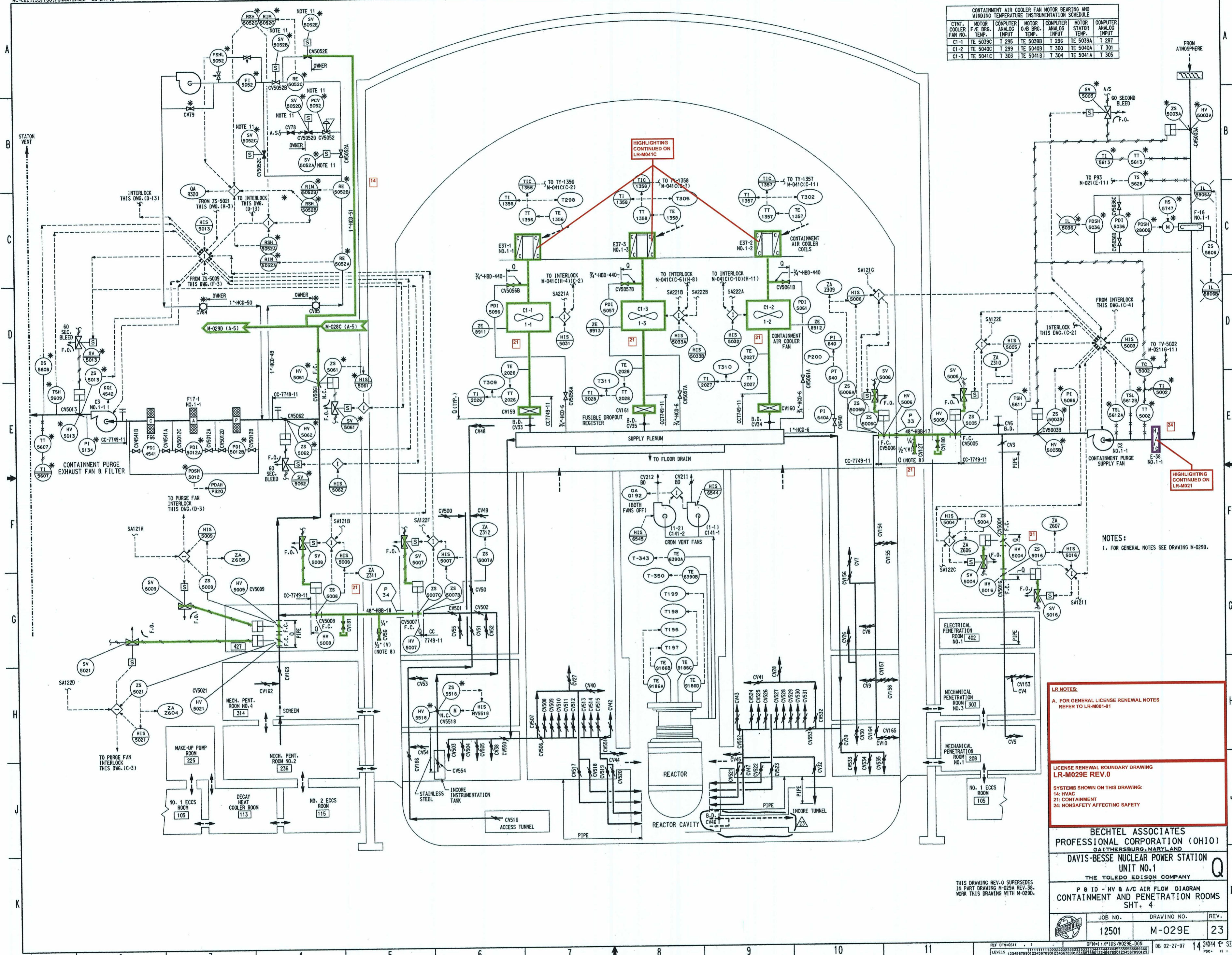


CONTAINMENT AIR COOLER FAN MOTOR BEARING AND WINDING TEMPERATURE INSTRUMENTATION SCHEDULE						
CONT. COOLER FAN NO.	MOTOR F/E BRG. TEMP.	COMPUTER ANALOG INPUT	MOTOR O/B BRG. TEMP.	COMPUTER ANALOG INPUT	MOTOR STATOR TEMP.	COMPUTER ANALOG INPUT
C1-1	TE 5039C	T 295	TE 5039B	T 296	TE 5039A	T 297
C1-2	TE 5040C	T 299	TE 5040B	T 300	TE 5040A	T 301
C1-3	TE 5041C	T 303	TE 5041B	T 304	TE 5041A	T 305



HIGHLIGHTING CONTINUED ON LR-M041C

HIGHLIGHTING CONTINUED ON LR-M021

NOTES:
1. FOR GENERAL NOTES SEE DRAWING M-0290.

LR NOTES:
A. FOR GENERAL LICENSE RENEWAL NOTES REFER TO LR-M001-01

LICENSE RENEWAL BOUNDARY DRAWING
LR-M029E REV.0

SYSTEMS SHOWN ON THIS DRAWING:
14: HVAC
21: CONTAINMENT
24: NONSAFETY AFFECTING SAFETY

BECHTEL ASSOCIATES
PROFESSIONAL CORPORATION (OHIO)
GAITHERSBURG, MARYLAND

DAVIS-BESSE NUCLEAR POWER STATION
UNIT NO.1
THE TOLEDO EDISON COMPANY

P & ID - HV & A/C AIR FLOW DIAGRAM
CONTAINMENT AND PENETRATION ROOMS
SHT. 4

JOB NO.	DRAWING NO.	REV.
12501	M-029E	23

THIS DRAWING REV.0 SUPERSEDES IN PART DRAWING M-029A REV.38. WORK THIS DRAWING WITH M-0290.

D-43 012943