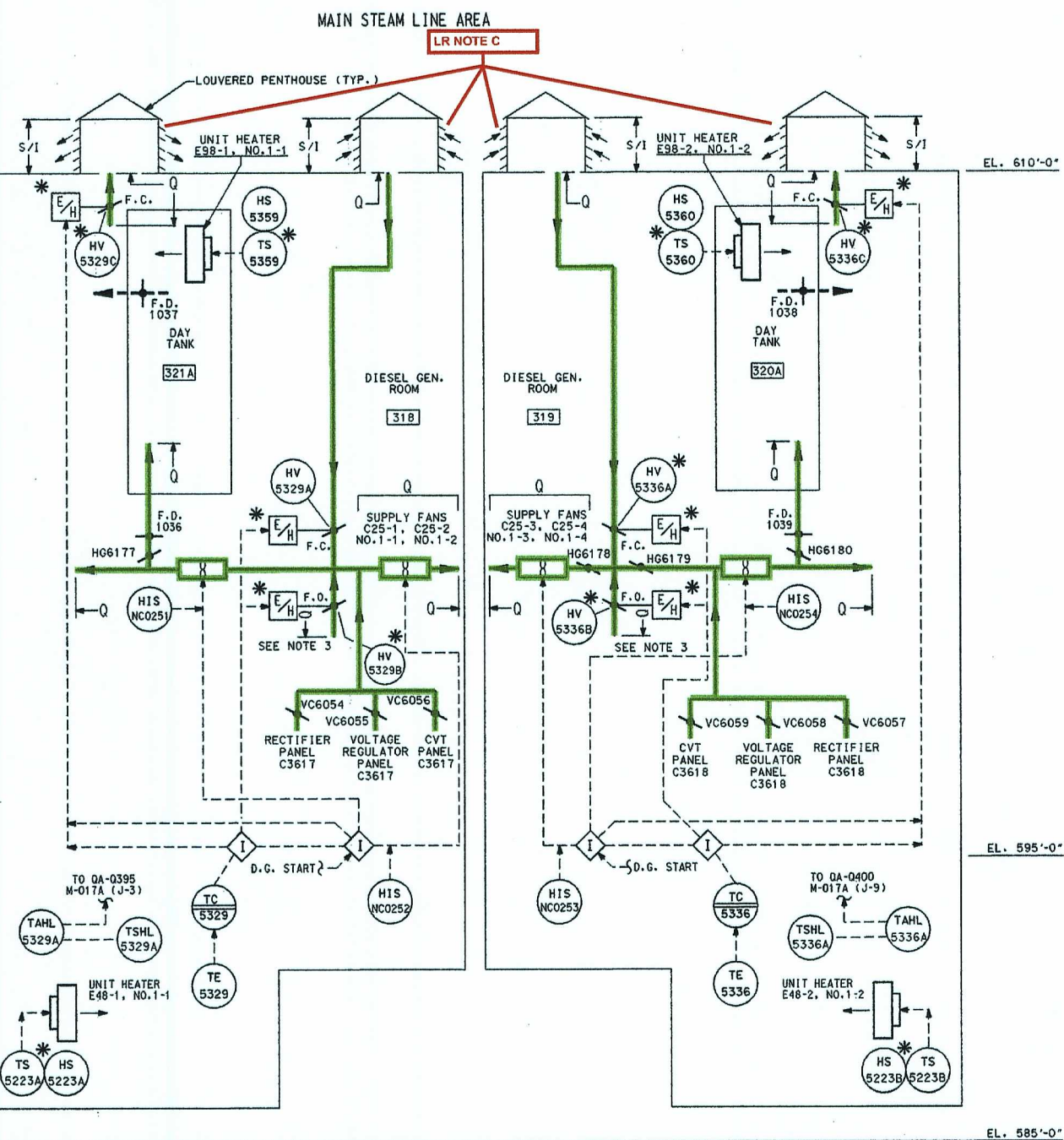
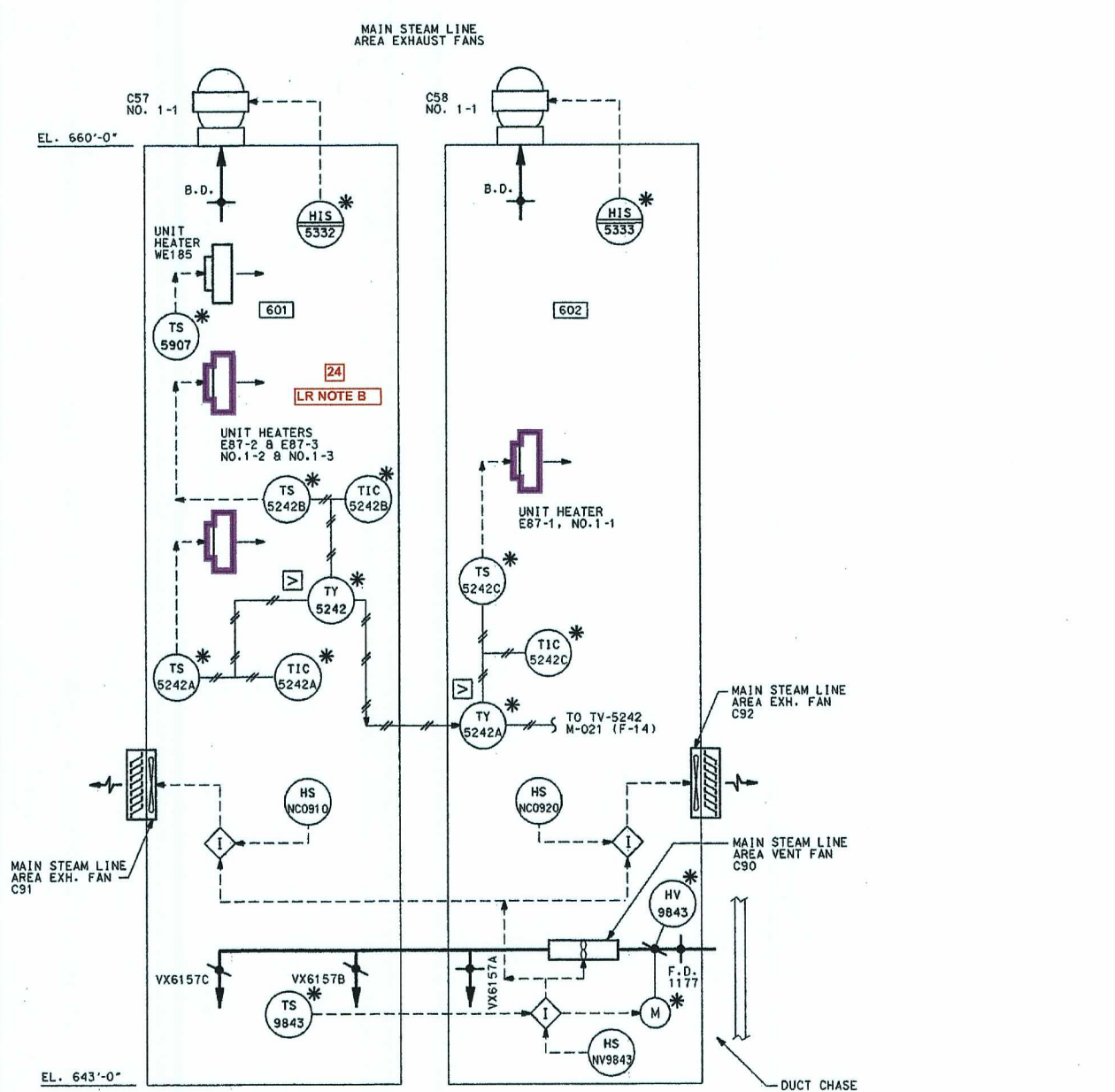


SWITCHGEAR, BATTERY AND CHARGER ROOMS



EMERGENCY DIESEL GENERATOR ROOMS

- LEGEND**
- TRANSFER AIR (DUCTLESS)
  - SUPPLY OR EXHAUST AIR
  - DIRECTION OF FLOW
  - VOLUME CONTROL DAMPER
  - B.D. BACKDRAFT DAMPER
  - F.D. FIRE DAMPER
  - TEST PORT
  - PNEUMATIC PISTON OPERATED DAMPER
  - VANE AXIAL FAN
  - PRE-FILTER
  - ABSOLUTE FILTER
  - CHARCOAL FILTER
  - ROLL-O-MATIC FILTER
  - LOUVER
  - HEATING COIL
  - COOLING COIL
  - CENTRIFUGAL FAN

- NOTES:**
1. FOR SYMBOLS NOT SHOWN ABOVE SEE PIPING AND INSTRUMENTATION DRAWINGS NO. M-001 AND M-002.
  2. "O" LISTED ITEMS INCLUDE ALL ASSOCIATED INSTRUMENTATION.
  3. A BLANK MUST BE INSTALLED ON THE NON-OPERATING EDG FAN OUTLET DUCT FOR SYSTEM OPERATION WITH ONLY ONE VENTILATION FAN.
  4. THE ONLY VENT OR DRAIN LINE CAPS REQUIRED TO BE SHOWN ON PIPING AND INSTRUMENTATION DIAGRAMS ARE THOSE CONTROLLED UNDER DB-OP-00009 (FORMERLY AD1839-03). THE ACTUAL TERMINATION OF ALL OTHER VENTS OR DRAINS ARE NOT SHOWN AND INSTEAD, AN OPEN ENDED PIPE IS DISPLAYED.

**LR NOTES:**

A. FOR GENERAL LICENSE RENEWAL NOTES REFER TO LR-M001-01.

B. THESE THREE UNIT HEATERS ARE SYSTEM 24. ALL OTHER HIGHLIGHTED COMPONENTS ARE SYSTEM 14.

C. LOUVERED PENTHOUSES ARE EVALUATED AS STRUCTURAL COMPONENTS.

**LICENSE RENEWAL BOUNDARY DRAWING**  
**LR-M027B REV. 0**

SYSTEMS SHOWN ON THIS DRAWING:  
 14: HVAC  
 24: NONSAFETY AFFECTING SAFETY

**BECHTEL COMPANY**  
 GAITHERSBURG, MARYLAND

**DAVIS-BESSE NUCLEAR POWER STATION**  
 THE TOLEDDO EDISON COMPANY  
 THE CLEVELAND ELECTRIC ILLUMINATING COMPANY

P & ID-HV & A/C AIR FLOW DIAGRAM  
**AUXILIARY BUILDING**  
**NON RADIOACTIVE AREAS**

JOB No.	DRAWING No.	REV.
7749	M-027B	43

D-36