

MAIN FEEDWATER PUMP

MAIN FW PUMP NO. 1		
DESCRIPTION	INSTR. NO.	COMP PT NO
THR. BRG OIL	TE-472A	T-640
O/B BRG OIL	TE-472B	T-638
T/E BRG OIL	TE-472C	T-639
LWR CASE TEMP.	TE-472D	
UPR CASE TEMP.	TE-472E	
THR. BRG. (INBOARD SHOES)	TE-472F	
CASING	TT-472	T-641
LWR CASE TEMP	TT-472A	T-637
CASING	TDY-472	
T/E BRG VIB	ZY-783A	V-639
T/E BRG VIB	ZY-783A	
O/B BRG VIB	ZY-783B	V-638
O/B BRG VIB	ZY-783B	

MAIN FEEDWATER PUMP TURBINE

MAIN FEEDWATER PUMP TURBINE SUPERVISORY INSTRUMENTS			
NO. 1 TURBINE	EXHAUST CASING	NO. 1 TURBINE	ECCENTRICITY DETECTORS
PS-2535B		ZE-2700	
PS-2535A			ACTIVE THRUST BRG. MT.
PS-2729		TE-2876	
PS-2731			INACTIVE THRUST BRG. MT.
ZS-2529A		TE-2163	
ZS-2740			ACTIVE THRUST WEAR TEST
ZS-2741		HS-2775	
ZI-5486A		HS-2775A	
ZI-5487A		IL-2715	
PSH-5485A		P-658	
F70-01		HS-2777	
P-655		PS-2717	
		IL-2717	
		HS-2769	
		IL-2769	
		SV-2769	
		PSL-4533A	
		HS-2767	
		PSL-4533B	
		SV-2767	
		PSL-4533D	

MAIN FW PUMP TURBINE		
DESCRIPTION	COMP PT NO	INSTR. NO.
BRG OIL TEMP		TTIS-1286
		TTIS-1287
BFP END	T-651	TE-1289
MFP END	T-657	TE-1290
THR BRG OIL TEMP		TTIS-1288
		TE-1291
STOP VLV CHEST TEMP	T-653	TE-2765
CONTROL STOP VLVS	ZS-2529B	
LP CLOSED	Z-620	ZS-2531B
BRG VIBRATION		HS-2777
BFP END	V-652	ZI-2703
		ZE-2703
		ZSH-2703
MFP END	V-657	ZI-2705
		ZE-2705
		ZSH-2705
SHAFT SPD	S-657	SI-2707A
		SI-2707B
ZERO SPEED	S-656	NOTE 7
TURBINE TRPO	-613	ZS-2743
TURN. GEAR		HIS-1234A
TRN CR ENG		IL-1234B

VIBRATION MONITORING		
DESCRIPTION	COMP PT NO	INSTR. NO.
VIB MONITOR	V650	ZSH-783
		ZSH-783A
		ZSH-783B
		ZSH-785
		ZSH-786
		ZSH-787A
		ZSH-787B
		ZSH-817A
		ZSH-817B

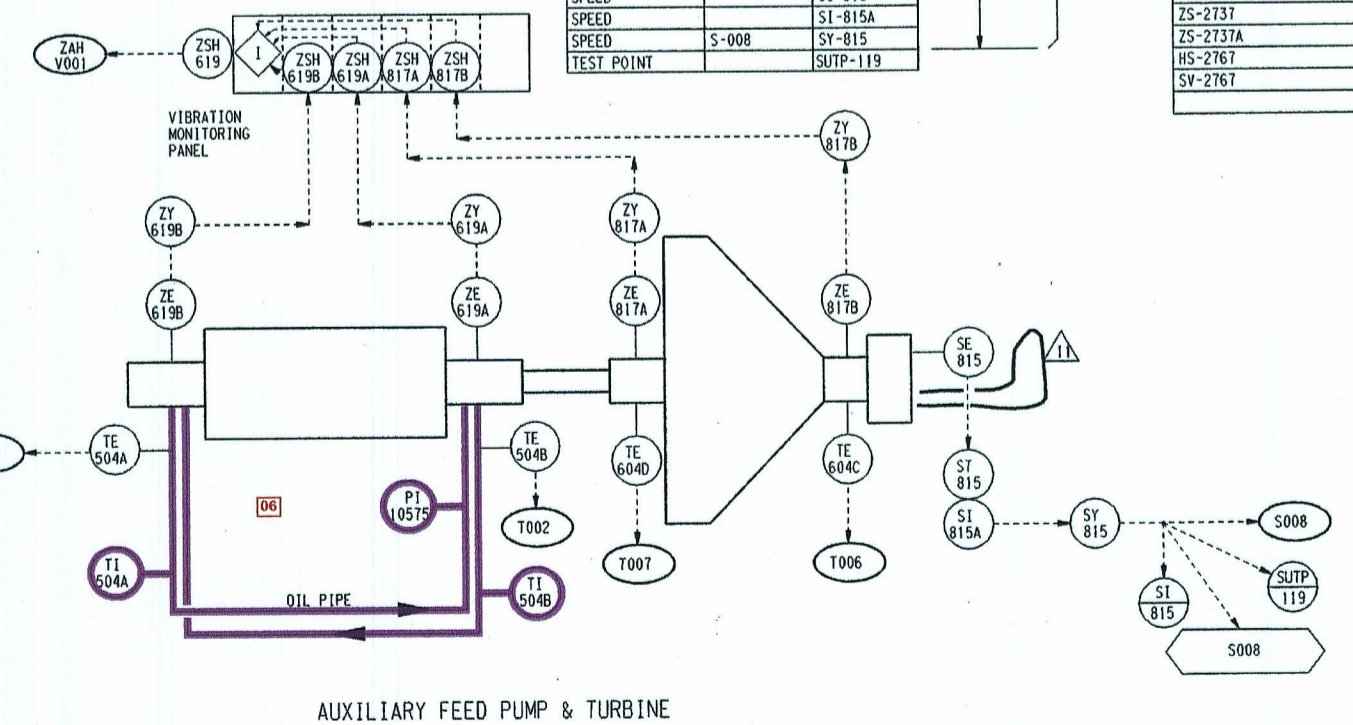
GEAR REDUCER		
DESCRIPTION	COMP PT NO	INSTR. NO.
HSS-T/E	T-040	TE-1790A
HSS-P/E	T-041	TE-1790B
LSS-T/E	T-042	TE-1790C
LSS-P/E	T-043	TE-1790D
LSS BRG T/E	T-042	ZY-785
HSS BRG P/E	T-041	ZE-785
HSS BRG P/E	T-041	ZE-786
STUB BRG	T-632	TE-6361

FW BOOSTER PUMP NO. 1		
DESCRIPTION	COMP PT NO	INSTR. NO.
THR BRG	T-046	TE-465A
THR BRG	T-046	TE-465B
THR BRG	T-043	TE-465C
O/B BRG	T-045	TE-465D
T/E BRG	T-045	TE-465E
		ZY-787A
		ZY-787B
		ZY-787C
		ZY-787D
		ZY-787E

AUXILIARY FEED PUMP NO. 1		
DESCRIPTION	INSTR. NO.	COMP PT NO
O/B BRG OT	TE-504A	T-001
T/E BRG OT	TE-504B	T-002
O/B BRG OT	TI-504A	
T/E BRG OT	TI-504B	
BRG. VIB.	ZE-619A	
BRG. VIB.	ZE-619A	
BRG. VIB.	ZE-619B	
BRG. VIB.	ZY-619B	
BRG. LUBE OIL PRESS	PI-10575	

AUX FEED PUMP TURBINE		
DESCRIPTION	COMP PT NO	INSTR. NO.
O/B BRG OT	T-006	TE-604C
P/E BRG OT	T-007	TE-604D
BRG. VIB.		ZE-817A
BRG. VIB.		ZE-817B
BRG. VIB.		ZE-817C
SPEED PICK-UP	SE-815	
SPEED (RPM)	SI-815	
SPEED	SI-815A	
SPEED	SY-815	
TEST POINT	SUTP-119	

NOTE 6
NOTE 6
NOTE 6
NOTE 5
FRONT STD.



AUXILIARY FEED PUMP & TURBINE

- NOTES:
- FOR INSTRUMENTATION SYMBOLS, SEE DWG. M-002.
 - FOR GENERAL NOTES, PIPING SYMBOLS AND P & ID INDEX SEE DWG. M-001.
 - FOR DETAILED LOCATION OF M.F. PUMP TURB. INSTRUMENTATION AND DISPOSITION OF MECH. LINKAGE REFER TO G.E. DWG. 505E253XR (BECHETEL DWG. NO. 7749-M-38-167, 168, 169, P & ID M-018).
 - FOR MAIN FEED PUMP TURBINE LUBE-OIL INSTRUMENTATION SEE P & ID M-018.
 - DEVICE DOWNGRADED TO NON-O.
 - SAFETY IS "O" FOR PHYSICAL INTEGRITY ONLY. PERFORMS NO SAFETY FUNCTION.
 - SEE E458 SHEET 5B.

LR NOTES:
A. FOR GENERAL LICENSE RENEWAL NOTES REFER TO LR-M001-01

LICENSE RENEWAL BOUNDARY DRAWING
LR-M024G REV. 0

SYSTEMS SHOWN ON THIS DRAWING:
05: MAIN FEEDWATER
06: AUXILIARY FEEDWATER

DAVIS-BESSE NUCLEAR POWER STATION
UNIT NO. 1
THE YUKON DIVISION COMPANY

PIPING & INSTRUMENT DIAGRAM
NO. 1 MAIN AND AUXILIARY TURBINE
DRIVEN FEED PUMPS

DRAWING NO.	REV.
M-024G	11

THIS DRAWING AT REVISION 0 SUPERSEDES
IN PART M-024B REV. 18 WORK
THIS DRAWING WITH M-024H & M-024J

DB 01-19-06 13

01230