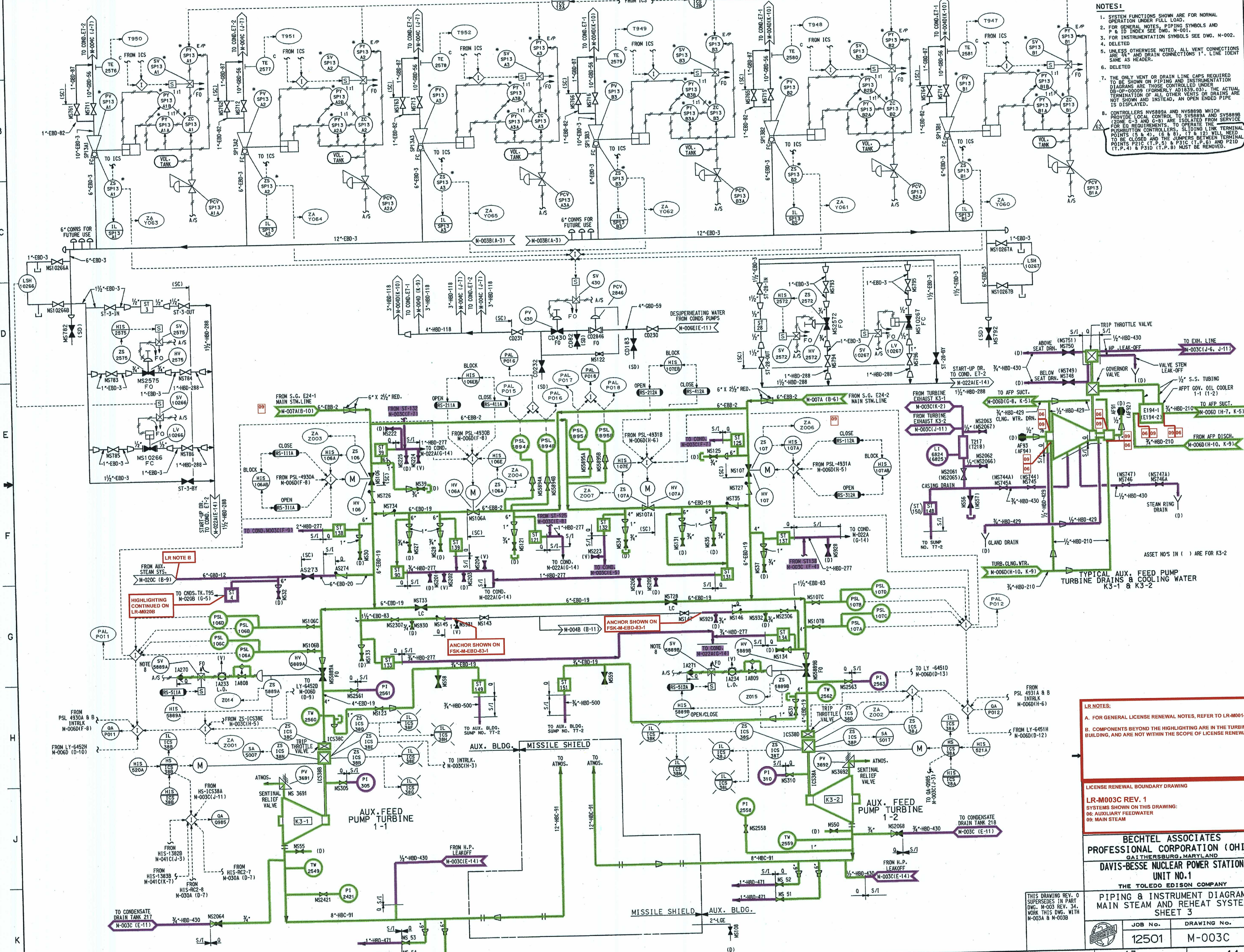


- NOTES:**
1. SYSTEM FUNCTIONS SHOWN ARE FOR NORMAL OPERATION UNDER FULL LOAD.
 2. FOR GENERAL NOTES, PIPING SYMBOLS AND P & ID INDEX SEE DWG. M-001.
 3. FOR INSTRUMENTATION SYMBOLS SEE DWG. M-002.
 4. DELETED
 5. UNLESS OTHERWISE NOTED, ALL VENT CONNECTIONS ARE 3/4" AND DRAIN CONNECTIONS 1" LINE IDENT SAME AS HEADER.
 6. DELETED
 7. THE ONLY VENT OR DRAIN LINE CAPS REQUIRED TO BE SHOWN ON PIPING AND INSTRUMENTATION DIAGRAMS ARE THOSE CONTROLLED UNDER SERVICE FOR REQUIREMENTS. CONTROLLED UNDER SERVICE TO BE CLOSED AND THE JUMPS BETWEEN TERMINAL POINTS P1C (T.P. 5) & P1C (T.P. 5) AND P21D (T.P. 4) & P21D (T.P. 5) MUST BE REMOVED.
 8. CONTROLLERS NV5889A AND NV5889B WHICH PROVIDE LOCAL CONTROL TO SV5889A AND SV5889B (ZONE G-3 AND G-8) ARE ISOLATED FROM SERVICE BY THE PUSHBUTTON CONTROLLERS, SLIDING LINK TERMINAL POINTS (L.P. 1) & (L.P. 2) WILL NEED TO BE CLOSED AND THE JUMPS BETWEEN TERMINAL POINTS P1C (T.P. 5) & P1C (T.P. 5) AND P21D (T.P. 4) & P21D (T.P. 5) MUST BE REMOVED.



LR NOTE B
 FROM AUX. STEAM SYS.
 M-020C (B-9)
 HIGHLIGHTING CONTINUED ON LR-M020B

ANCHOR SHOWN ON FSK-M-EBD-83-1

LR NOTES:
 A. FOR GENERAL LICENSE RENEWAL NOTES, REFER TO LR-M001-01
 B. COMPONENTS BEYOND THE HIGHLIGHTING ARE IN THE TURBINE BUILDING, AND ARE NOT WITHIN THE SCOPE OF LICENSE RENEWAL.

LICENSE RENEWAL BOUNDARY DRAWING
 LR-M003C REV. 1
 SYSTEMS SHOWN ON THIS DRAWING:
 06: AUXILIARY FEEDWATER
 09: MAIN STEAM

BECHTEL ASSOCIATES
PROFESSIONAL CORPORATION (OHIO)
 GAITHERSBURG, MARYLAND
DAVIS-BESSE NUCLEAR POWER STATION
 UNIT NO. 1

THE TOLEDO EDISON COMPANY
 PIPING & INSTRUMENT DIAGRAM
 MAIN STEAM AND REHEAT SYSTEM
 SHEET 3

JOB No.	DRAWING No.	REV.
12501	M-003C	62

012006