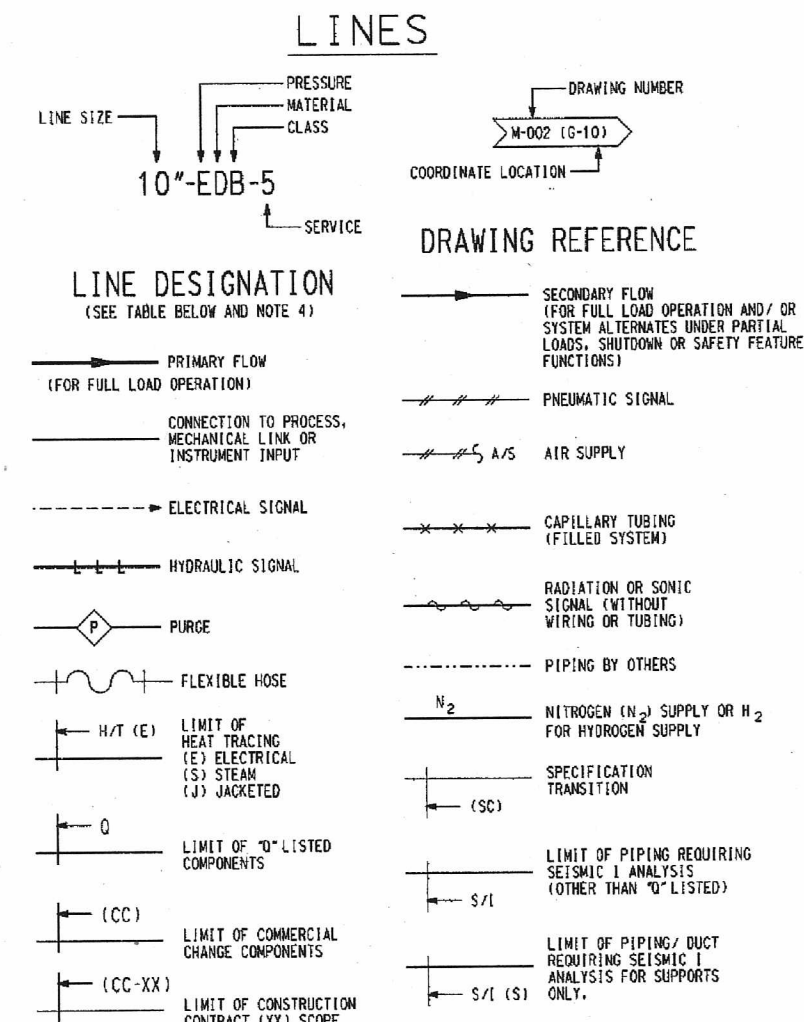
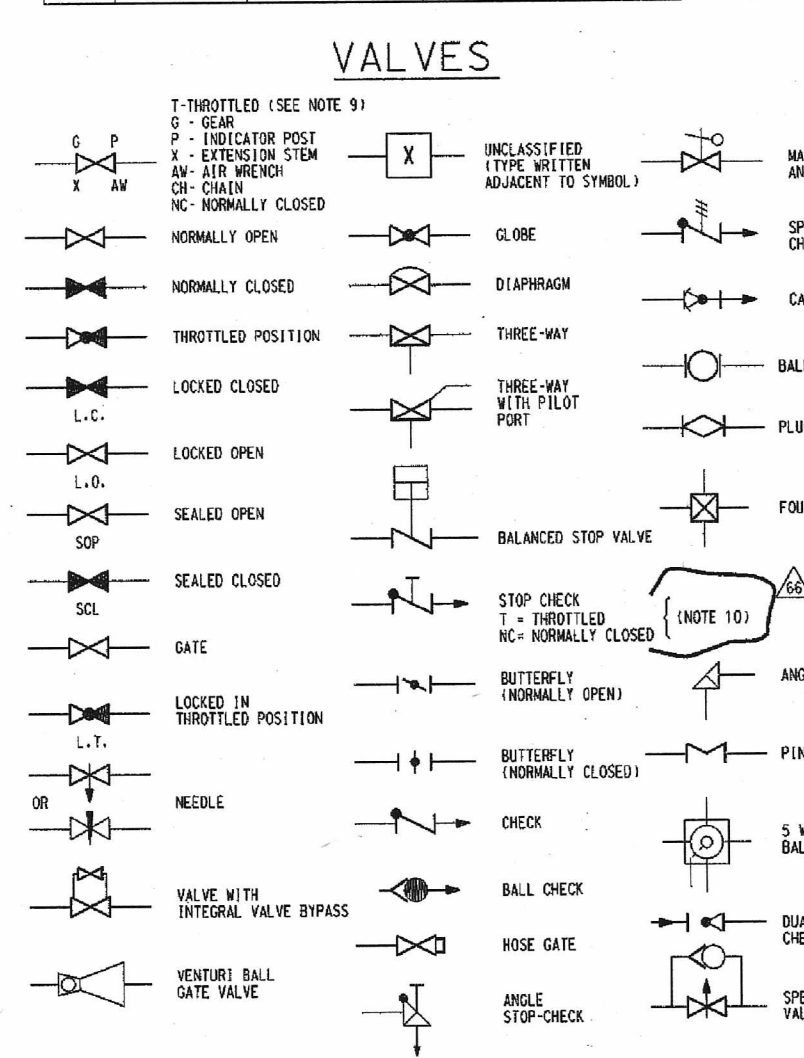


Table with columns: USAR FIG. NO., DWG. NOS., MAIN SYSTEM DESIGNATORS, PIPING & INSTRUMENT DIAGRAMS. Lists various piping systems like MAIN STEAM AND REHEAT SYSTEM SH.1, CONDENSATE SYSTEM, etc.

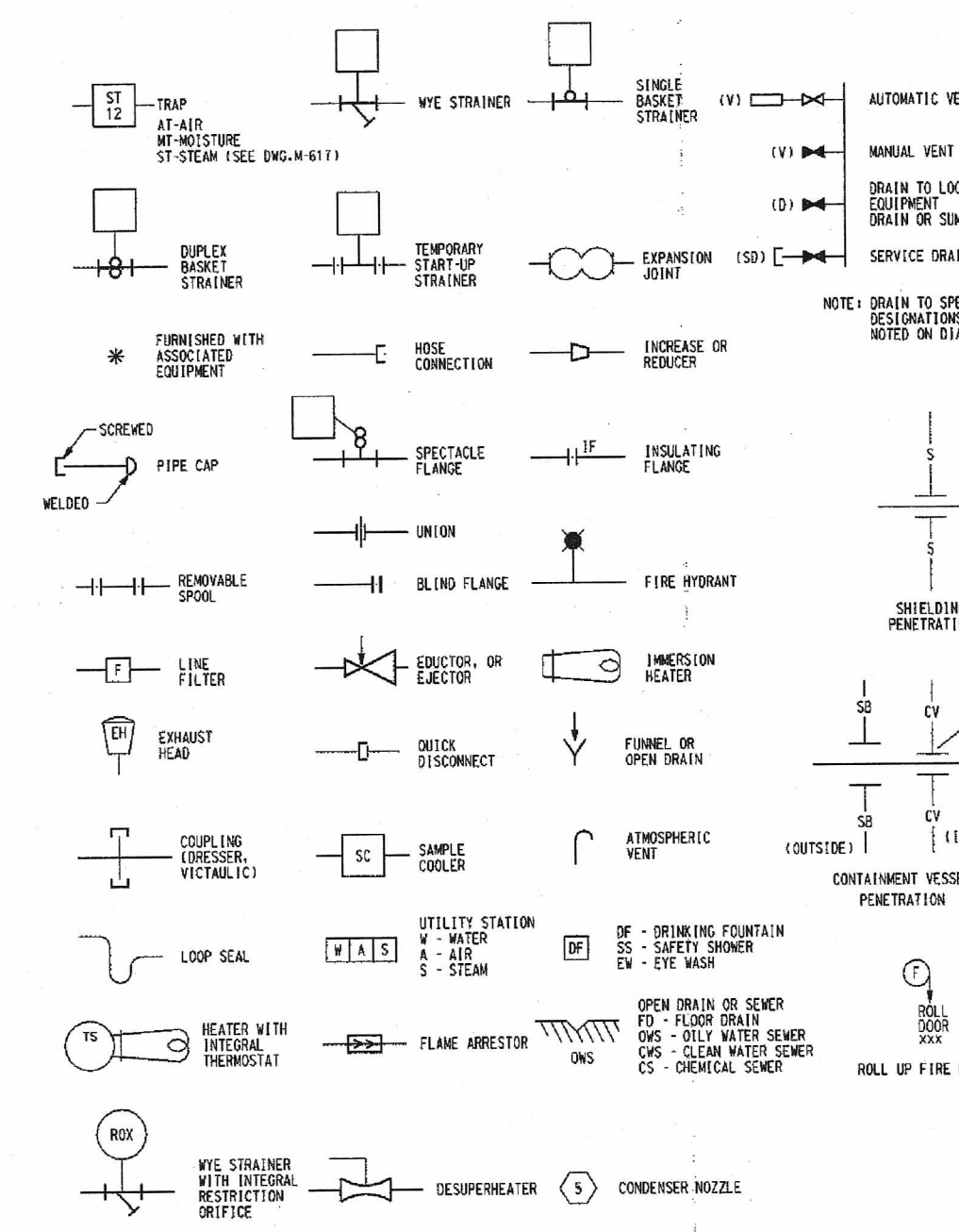


LINE DESIGNATION TABLE with columns: LETTER, FIRST LETTER, SECOND LETTER, THIRD LETTER, REMARKS. Lists materials like CARBON STEEL, STAINLESS STEEL, COPPER, etc.

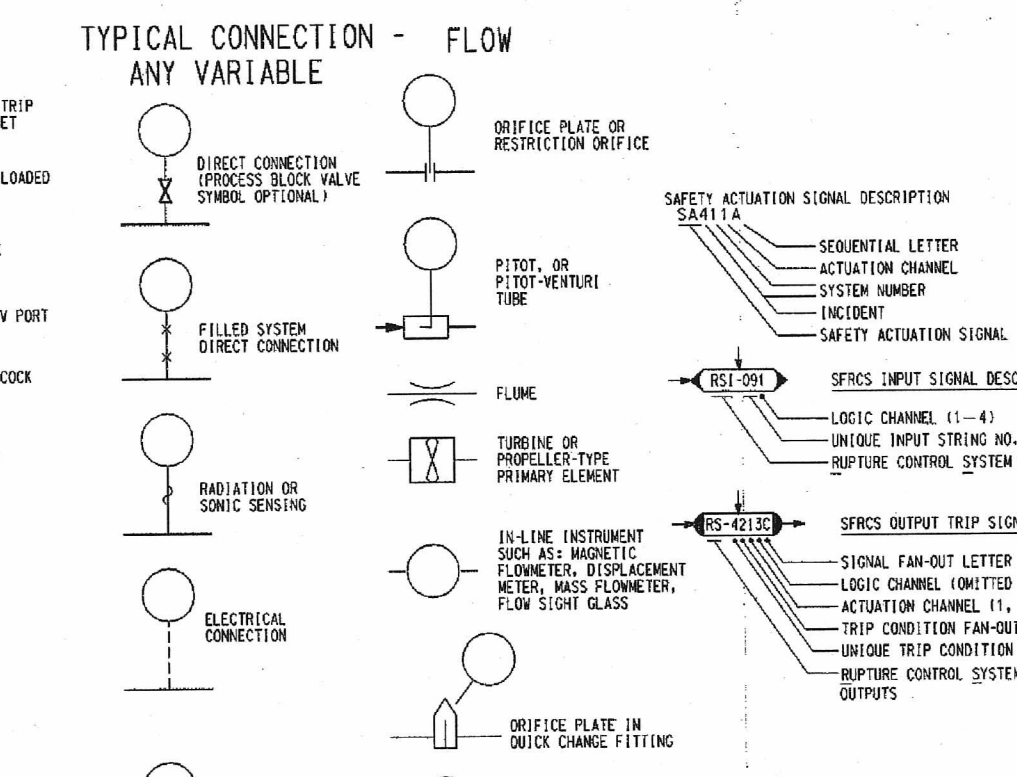


SUPERSEDED PIPING & INSTRUMENT DIAGRAM (DRAWINGS THAT HAVE BEEN SPLIT SINCE POWER OPERATION). Table listing drawing numbers, superseded by, and drawing numbers superseded by.

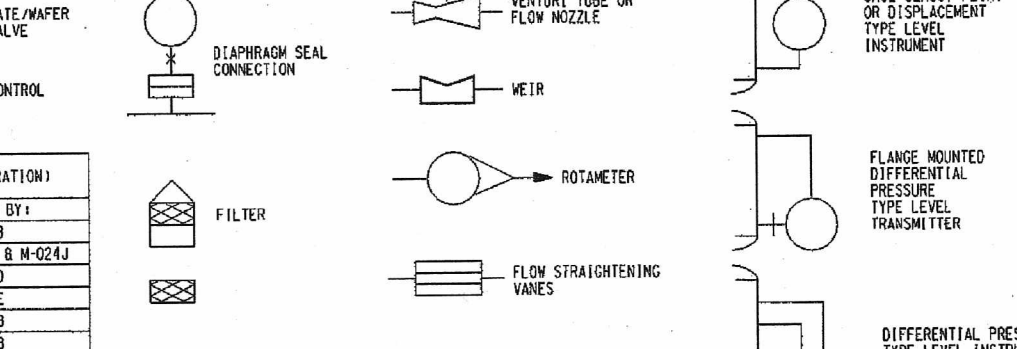
SPECIALTIES & MISCELLANEOUS SYMBOLS



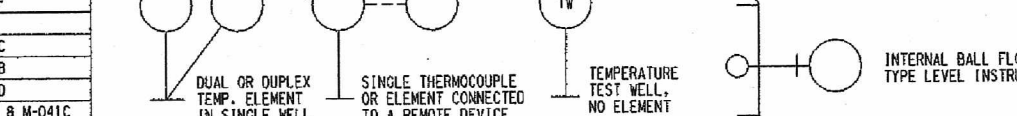
VARIABLES



LEVEL



TEMPERATURE



GENERAL NOTES:

- 1. FOR PROJECT MASTER VALVE IDENTIFICATION SEE DRAWING NO. M-611.
2. DELETED.
3. FOR INSTRUMENT LIST, SEE DRAWING NUMBER M-7201.
4. FOR PIPING AND MATERIAL SPEC. SHEET SEE DRAWING NO'S. M-601 AND M-602 AND SPECIFICATION M-200.
5. FOR SPEC. CHANGE POINTS FOR ASME SECTION III AND/OR CRITICAL PIPING VENT, DRAIN, AND TEST CONNECTIONS SEE M-601.
6. PIPING CODE REQUIREMENTS FOR NSC PIPING CLASS SHALL BE ANSI B31.1-1.0, AUGMENTED, PER FOR NO. 80-028.
7. THE SYMBOL 0-1 DENOTES THE LOCATION OF THE NUCLEAR SAFETY RELATED BOUNDARY. THE SYMBOL S/1 DENOTES THE GENERAL LOCATION OF THE S/1 BOUNDARY. TO DETERMINE THE EXACT LOCATION OF S/1 BOUNDARIES, THE CORRESPONDING PIPING ISOMETRIC, DUCTWORK LAYOUT DRAWING AND THE HANGER LOCATION ISOMETRIC MUST BE REVIEWED.
8. PIPING AND TUBING CASINGS THAT ARE NOT PART OF A PRESSURE BOUNDARY ARE CONSIDERED OUTSIDE THE LEVEL OF DETAIL THAT NEEDS TO BE SHOWN ON PIPING AND INSTRUMENTATION DIAGRAMS. PIPING AND TUBING TERMINATIONS CONTROLLED UNDER ADMINISTRATIVE PROCEDURES (E.g. 0-0009 AND 0-01-0009) ARE DEPICTED AS CAPPED. PIPING AND TUBING TERMINATIONS THAT ARE NOT UNDER ADMINISTRATIVE CONTROL ARE TYPICALLY DEPICTED AS AN OPEN ENDED PIPE.
9. NON-ENGINEERED ATTACHMENTS ON AN OPEN ENDED PIPE, SUCH AS A CAP OR PLUG, AN EXTENDED RUN OF PIPE OR TUBE OR A FITTING FOR TEMPORARY HOSE OR TUBING ARE CONTROLLED IN ACCORDANCE WITH REQUIREMENTS CONTAINED IN THE GENERAL NOTES ON DRAWING M-601. ATTACHMENTS FULFILLING M-601 REQUIREMENTS ARE CONSIDERED OUTSIDE THE LEVEL OF DETAIL SHOWN ON THE PIPING AND INSTRUMENTATION DIAGRAMS AND ASSOCIATED ISOMETRIC DIAGRAMS.
10. FOR A STOP CHECK VALVE, THE NORMALLY CLOSED POSITION (NCP) DEFINES A CONDITION WHERE THE VALVE STEM RESTRAINS THE VALVE FROM OPENING FOR BOTH FORWARD AND REVERSE FLOW. THE THROTTLED POSITION (TP) DEFINES A CONDITION WHERE THE VALVE STEM RESTRAINS THE VALVE DISK FROM ACHIEVING A FULL OPEN POSITION, BUT DOES NOT RESTRICT THE CHECKING/CLOSURE ON REVERSE FLOW ACTION OF THE VALVE.

SYSTEM ABBREVIATIONS:

Table listing system abbreviations: AC - CHILLED WATER, AF - AUXILIARY FEED, AR - AIR CONDITIONING REFRIGERANT, AS - AUXILIARY STEAM, BE - BORIC ACID EVAPORATORS, BW - BORATED WATER, CV - CONTAINMENT VENTILATION, CW - TURBINE PLANT COOLING WATER SYSTEM, DA - DIESEL AIR, DH - DECAY HEAT REMOVAL, DM - DOMESTIC WATER, DO - DIESEL OIL, DR - STATION DRAINAGE SYSTEM, DS - RADWASTE DRAINING STATION, DW - DECONTAMINATION WATER, EX - EXHAUSTION STEAM, FO - AUXILIARY BOILER FUEL SYSTEM, FP - FIRE PROTECTION, FV - ELECTRO-HYDRAULIC CONTROL (EHC), FW - FEEDWATER, G - CO2 AND HYDROGEN SYSTEM, GS - GLAND SYSTEM, HA - HEATING, VENTILATION & AIR CONDITIONING, HD - HEATER DRAINS, HP - HIGH PRESSURE INJECTION (HPI), IA - INSTRUMENT AIR, ICS - INTEGRATED CONTROL SYSTEM, J - JACKET WATER COOLING, LW - LUBE OIL, LP - PROPANE GAS, LS - LIQUID SAMPLE, MS - MAIN STEAM SYSTEM, MU - MAKE-UP, NN - NITROGEN SYSTEM, PW - PRIMARY WATER, RC - REACTOR COOLANT, RD - MOISTURE SEPARATOR REHEATER DRAINS, RH - REHEAT SYSTEM, SA - STATION AIR, SC - SECONDARY CHEMICAL ADDITION, SF - SPENT FUEL POOL, SH - STATION HEATING, SP - SECONDARY PLANT, SR - SCREEN WASH SYSTEM, SS - SAMPLING SYSTEM, ST - STEAM TRAPS, SW - SERVICE WATER, TD - TURBINE DRAINS, VS - VACUUM SYSTEM, WC - CLEAN LIQUID RADWASTE, WD - WASTE DISPOSAL, WG - GASEOUS RADWASTE, WH - MISCELLANEOUS LIQUID RADWASTE, WT - MAKE-UP WATER TREATMENT, Y - MAIN GENERATOR STATOR WINDING COOLING WATER.

LICENSE RENEWAL BOUNDARY DRAWING LIR-001-00 REV. 0. Table with columns: No., DATE, REVISED, BY, CHECKED, DESIGNED, DRAWN, APPR. Lists revision history.

BECHTEL COMPANY GAITHERSBURG, MARYLAND. DAVIS-BESSE NUCLEAR POWER STATION THE TOLEDO EDISON COMPANY THE CLEVELAND ELECTRIC ILLUMINATING COMPANY.

Table with columns: JOB No., DRAWING No., REV. Lists job and drawing information.

Handwritten signature or initials.