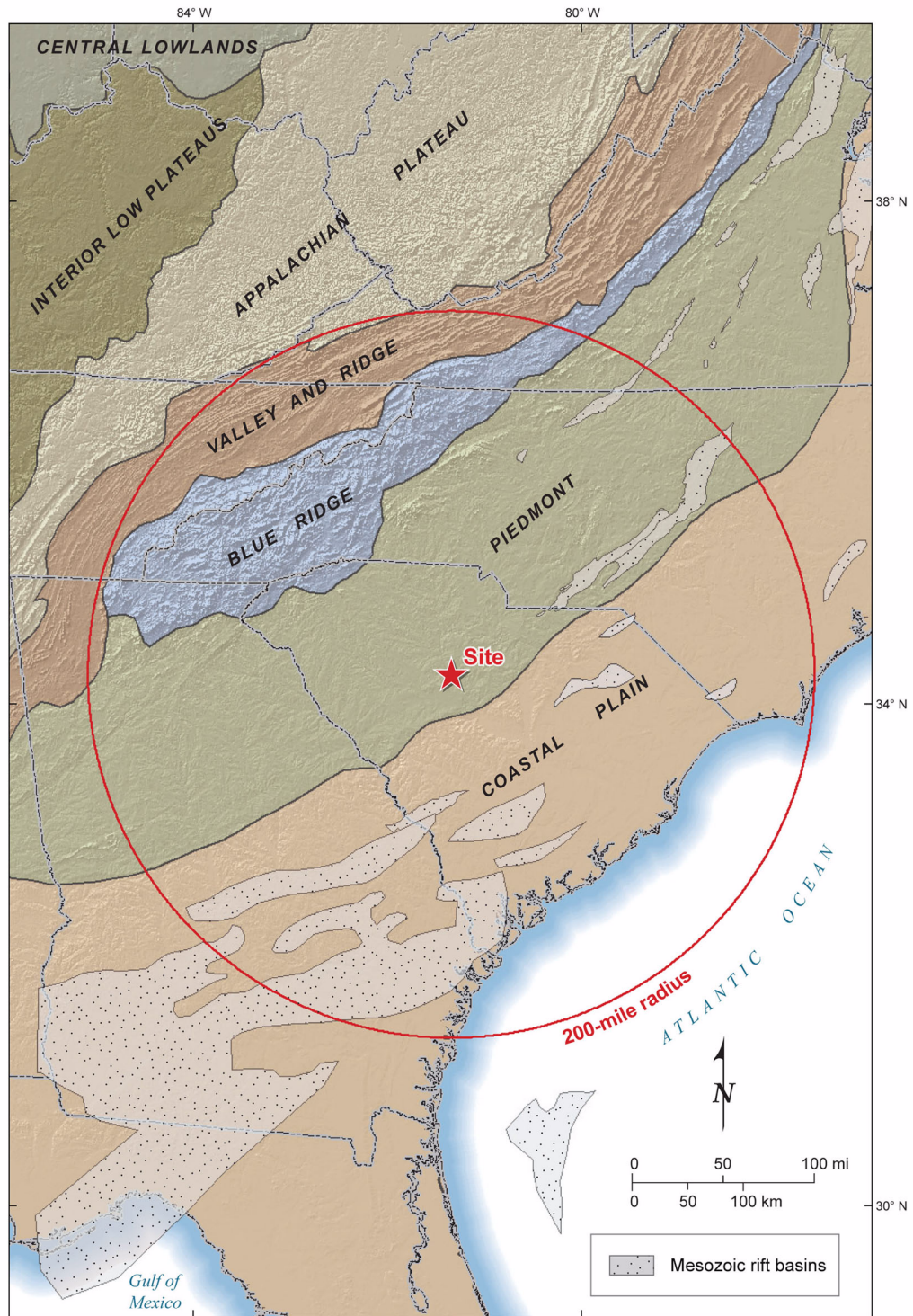


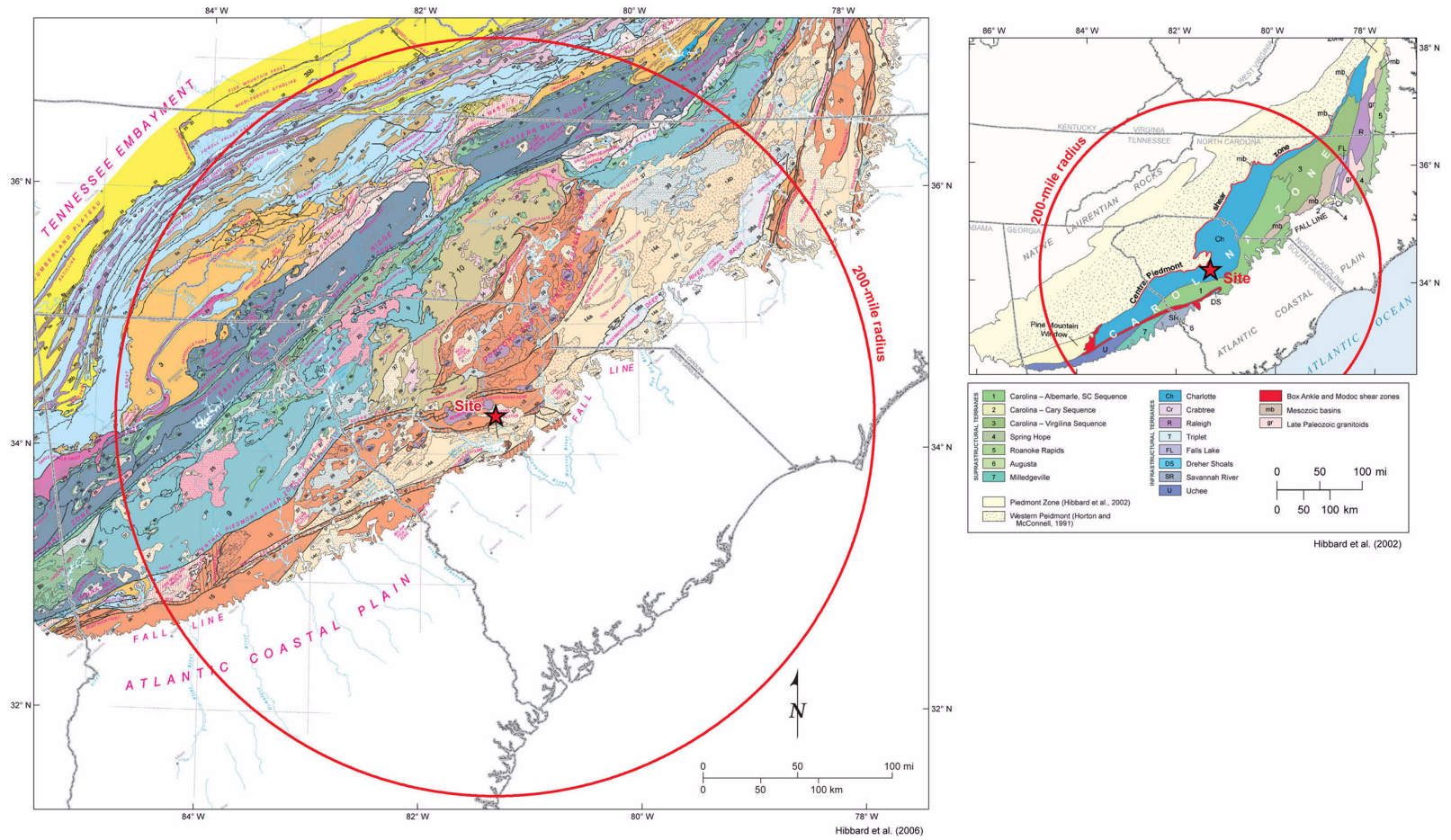
V. C. Summer Nuclear Station, Units 2 and 3
COL Application
Part 2, FSAR



Modified from Fenneman and Johnson (1946)

Figure 2.5.1-201. Map of Physiographic Provinces and Mesozoic Rift Basins

V. C. Summer Nuclear Station, Units 2 and 3
COL Application
Part 2, FSAR



See Sheet 2 of 2 for explanation

Figure 2.5.1-202. Tectonic Map of the Piedmont—Terranes within the Carolina Zone (Sheet 1 of 2)

V. C. Summer Nuclear Station, Units 2 and 3 COL Application Part 2, FSAR

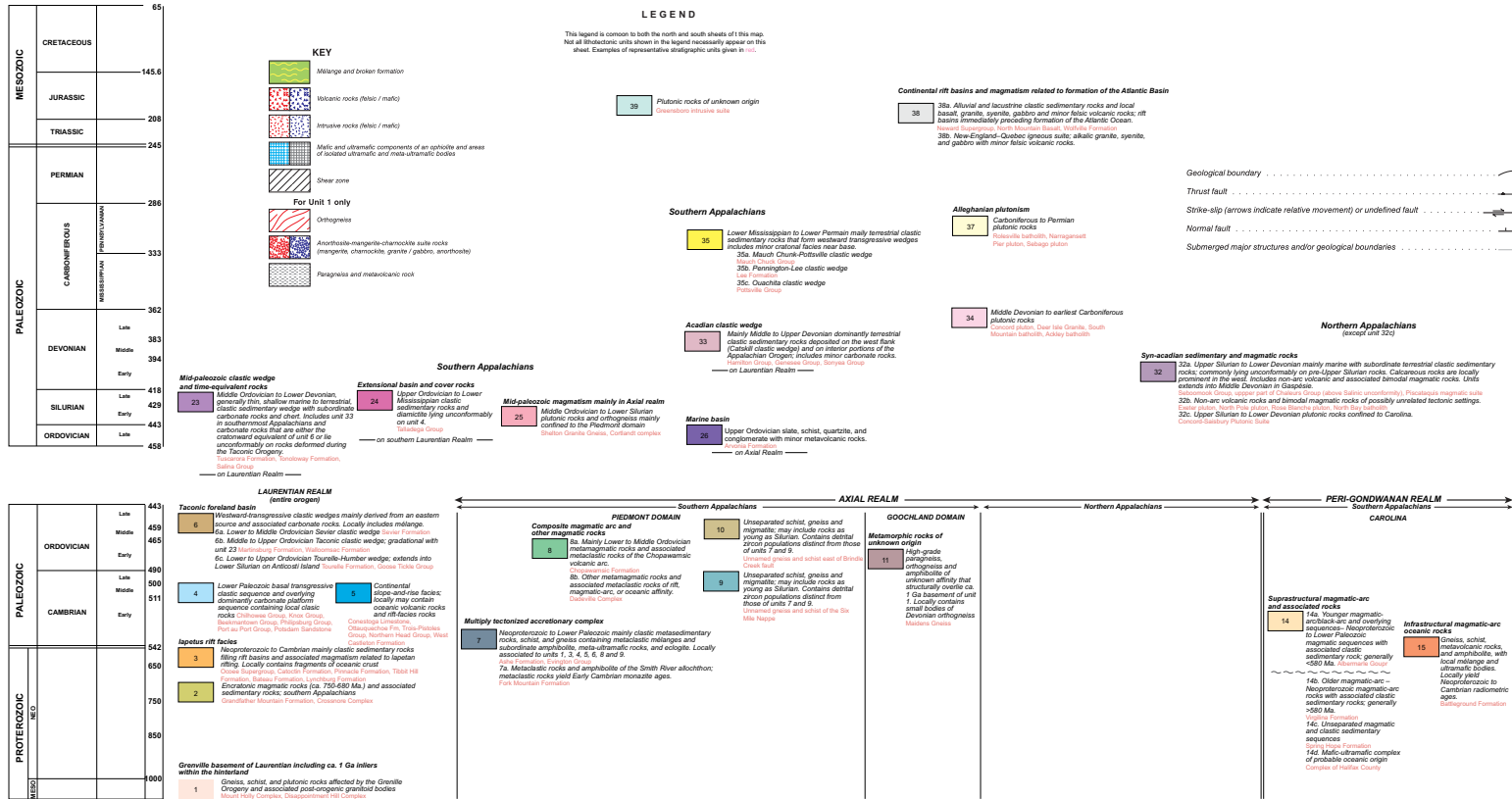


Figure 2.5.1-202. Tectonic Map of the Piedmont—Western Piedmont (Sheet 2 of 2)

V. C. Summer Nuclear Station, Units 2 and 3
COL Application
Part 2, FSAR

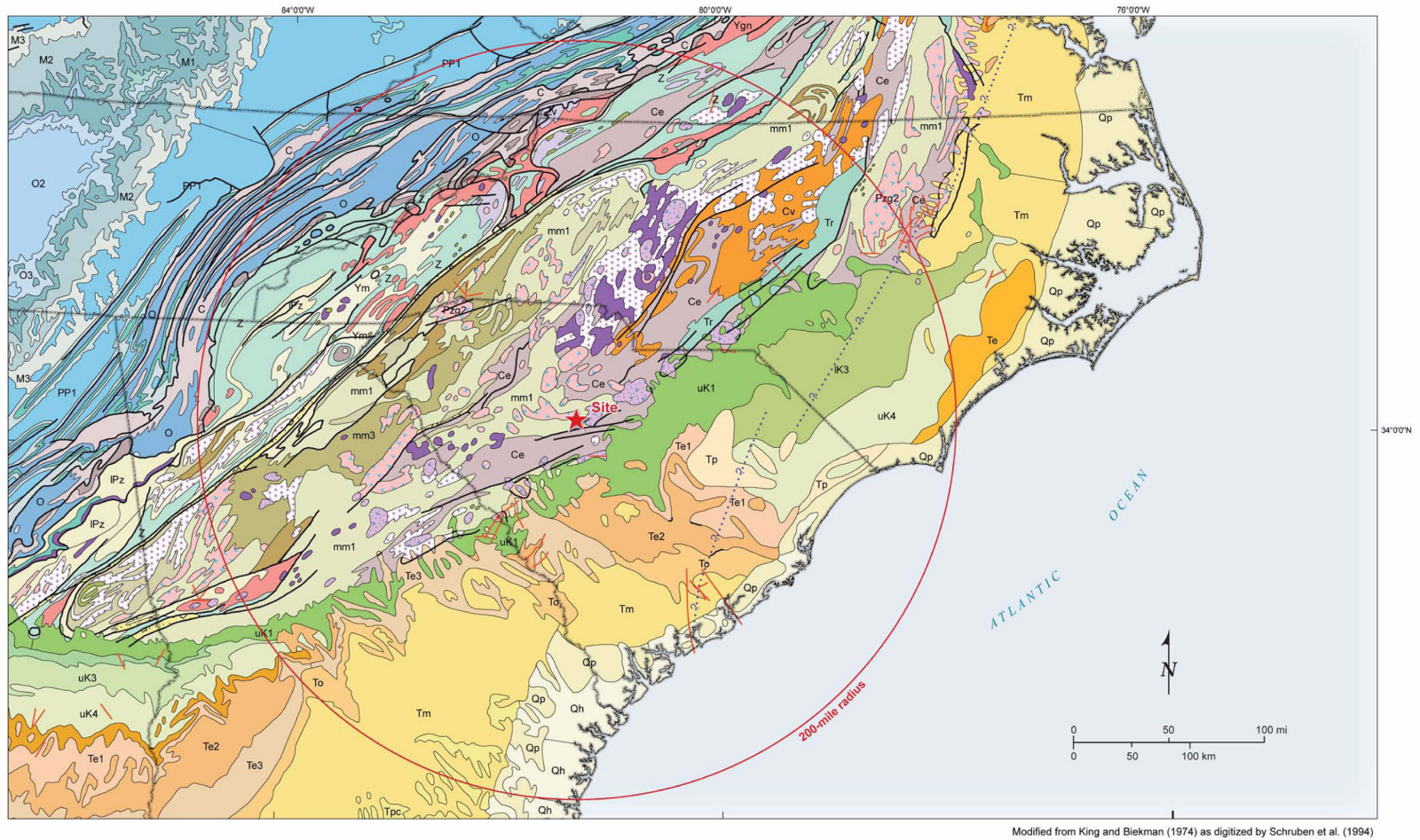


Figure 2.5.1-203. Site Region Geologic Map (Sheet 1 of 2)

V. C. Summer Nuclear Station, Units 2 and 3 COL Application Part 2, FSAR

Explanation

Faults

- Paleozoic faults
- Mesozoic faults
- Cenozoic faults
- Postlated East Coast Fault System

Geologic Units

QUATERNARY	<ul style="list-style-type: none"> Qh Holocene Qp Pleistocene glacial deposits 	MISSISSIPPIAN	<ul style="list-style-type: none"> M3 Upper Mississippian, Chesterian series M2 Upper Mississippian, Meramecian series M1 Lower Mississippian, Osagean and Kinderhookian series mm4 Metamorphic complex, felsic orthogneiss mm1 Metamorphic complex, felsic and paragneissic schist M Mississippian
TERTIARY	<ul style="list-style-type: none"> Tp Pliocene Tm Miocene To Oligocene Te3 Eocene, Jackson Group Te2 Eocene, Claiborne Group Te1 Eocene, Wilcox Group Te Eocene 	DEVONIAN	<ul style="list-style-type: none"> D Devonian Pzg2 Middle Paleozoic granitic rocks
UPPER CRETACEOUS	<ul style="list-style-type: none"> uK4 Navarro Group uK3 Taylor Group uK2 Austin and Eagle Ford Groups uK1 Woodbine and Tuscaloosa Groups 	ORDOVICIAN	<ul style="list-style-type: none"> O Ordovician O3 Upper Ordovician O2 Middle Ordovician
LOWER CRETACEOUS	<ul style="list-style-type: none"> lK3 Washita Group 	CAMBRIAN	<ul style="list-style-type: none"> C Cambrian Ce Eugeosynclinal Cv Volcanic rocks
TRIASSIC	<ul style="list-style-type: none"> Tr Triassic 	PRECAMBRIAN	<ul style="list-style-type: none"> Z Sedimentary Zv Volcanic rocks Ygn Orthogneiss Ym Paragneiss and schist
PERMIAN	<ul style="list-style-type: none"> PP1 Wolfcampian PP2 Leonardian 		
PENNSYLVANIAN	<ul style="list-style-type: none"> IPz Paleozoic 		

Modified from King and Biekman (1974) as digitized by Schruben et al. (1994)

Figure 2.5.1-203. Explanation of Site Region Geologic Map (Sheet 2 of 2)

V. C. Summer Nuclear Station, Units 2 and 3
COL Application
Part 2, FSAR

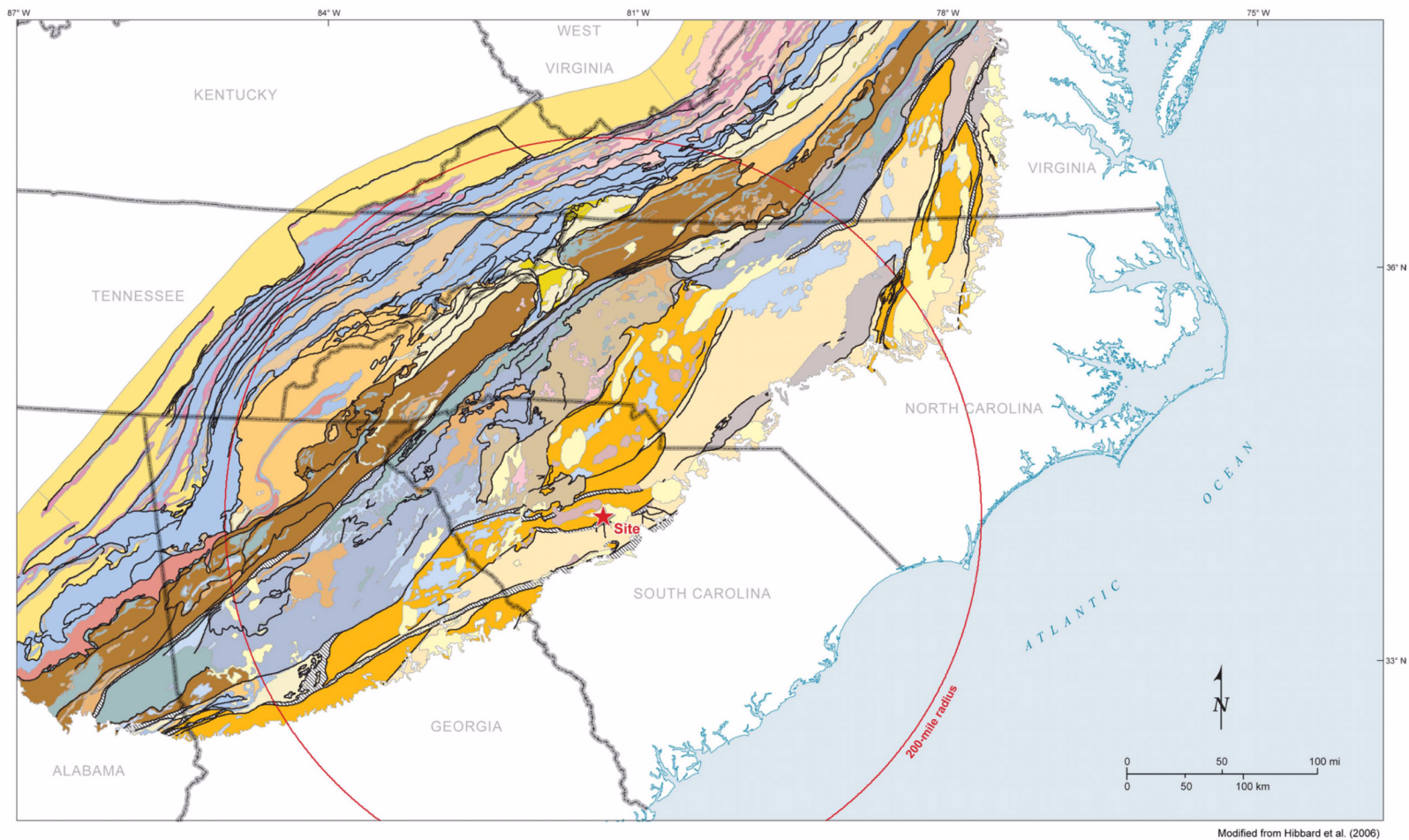


Figure 2.5.1-204. Lithotectonic Map of the Appalachian Orogen (Sheet 1 of 2)

V. C. Summer Nuclear Station, Units 2 and 3 COL Application Part 2, FSAR

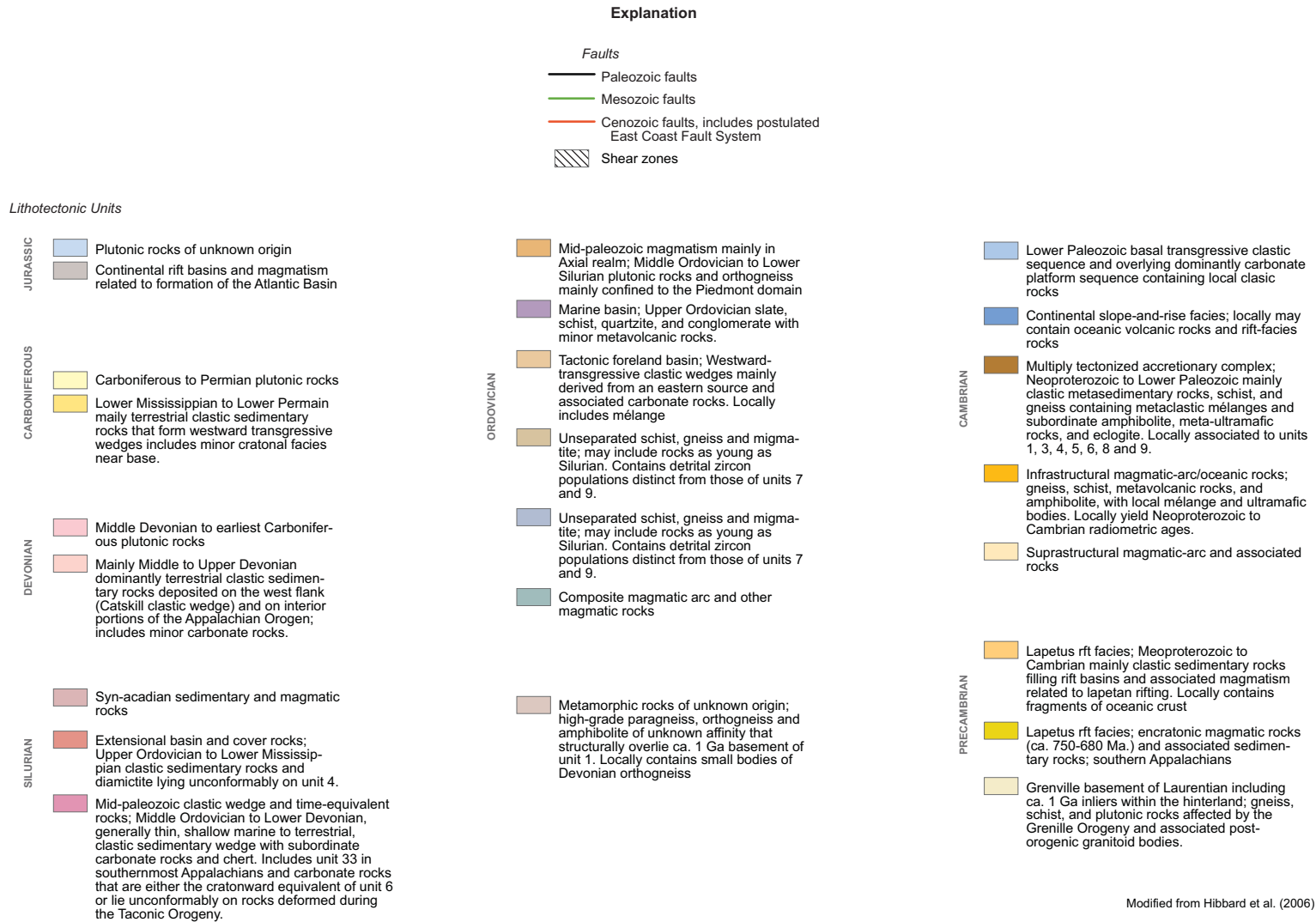


Figure 2.5.1-204. Lithotectonic Map of the Appalachian Orogen (Sheet 2 of 2)

V. C. Summer Nuclear Station, Units 2 and 3
 COL Application
 Part 2, FSAR

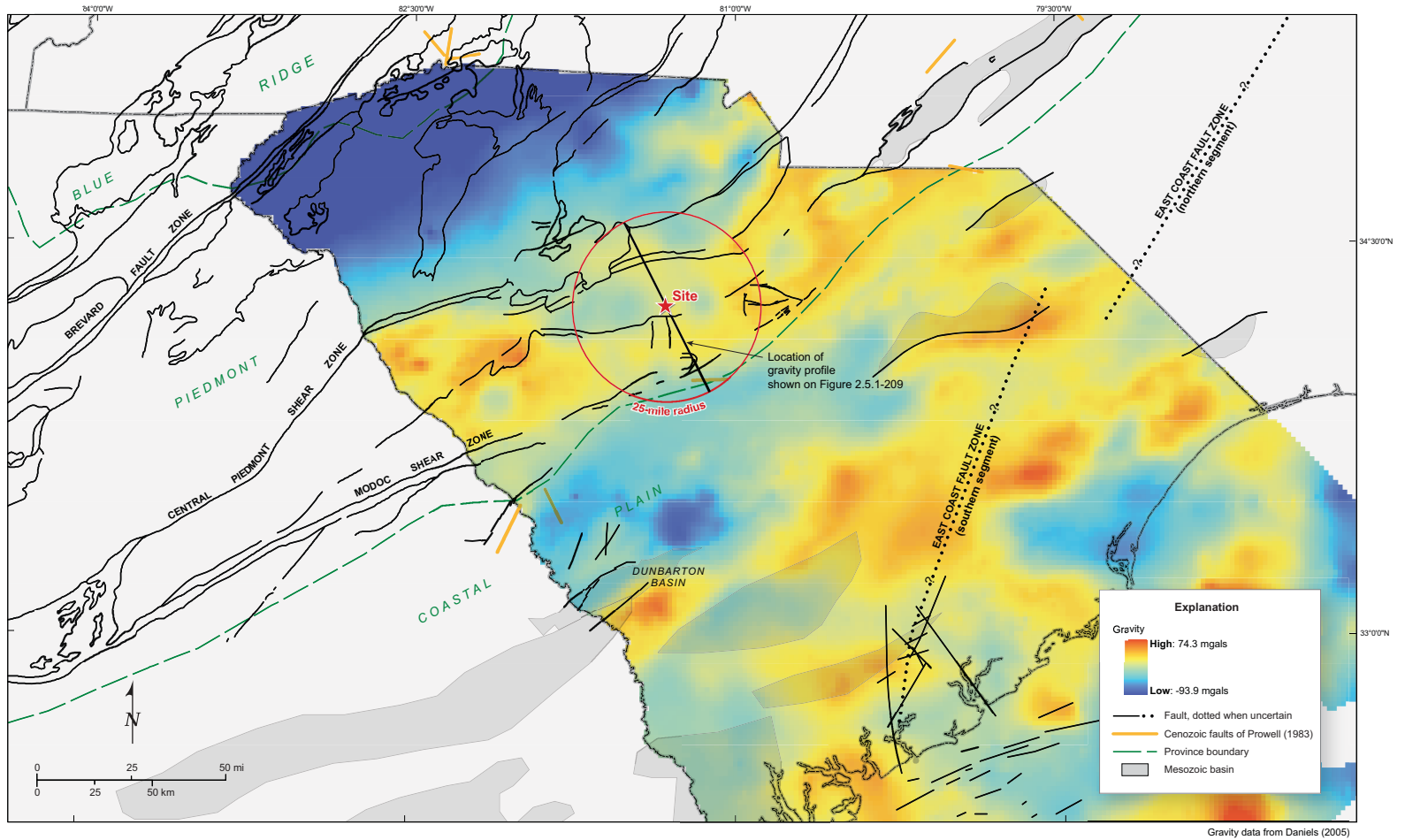
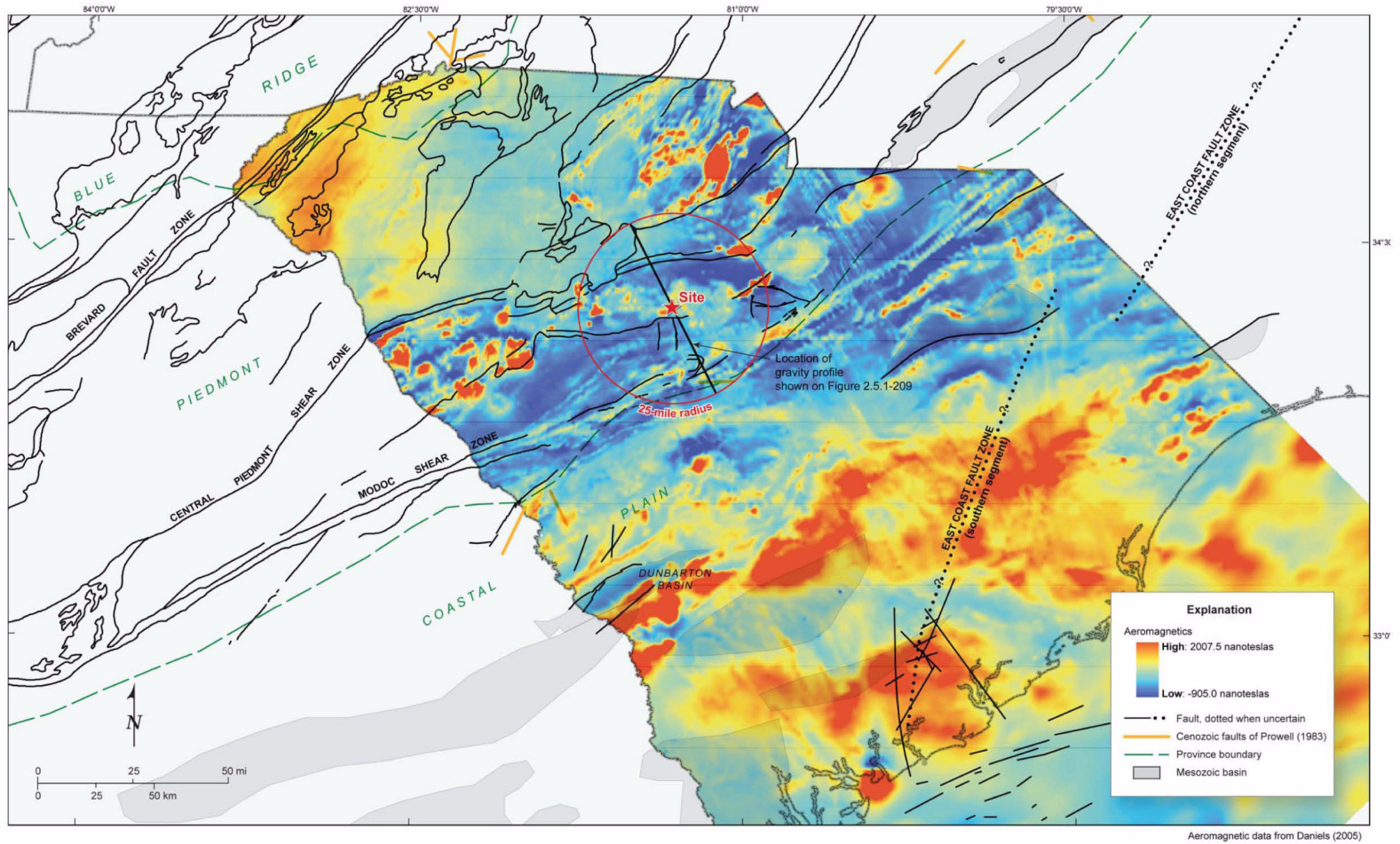


Figure 2.5.1-205. Regional Gravity Data

V. C. Summer Nuclear Station, Units 2 and 3
 COL Application
 Part 2, FSAR



Aeromagnetic data from Daniels (2005)

Figure 2.5.1-206. Regional Magnetic Data

V. C. Summer Nuclear Station, Units 2 and 3 COL Application Part 2, FSAR

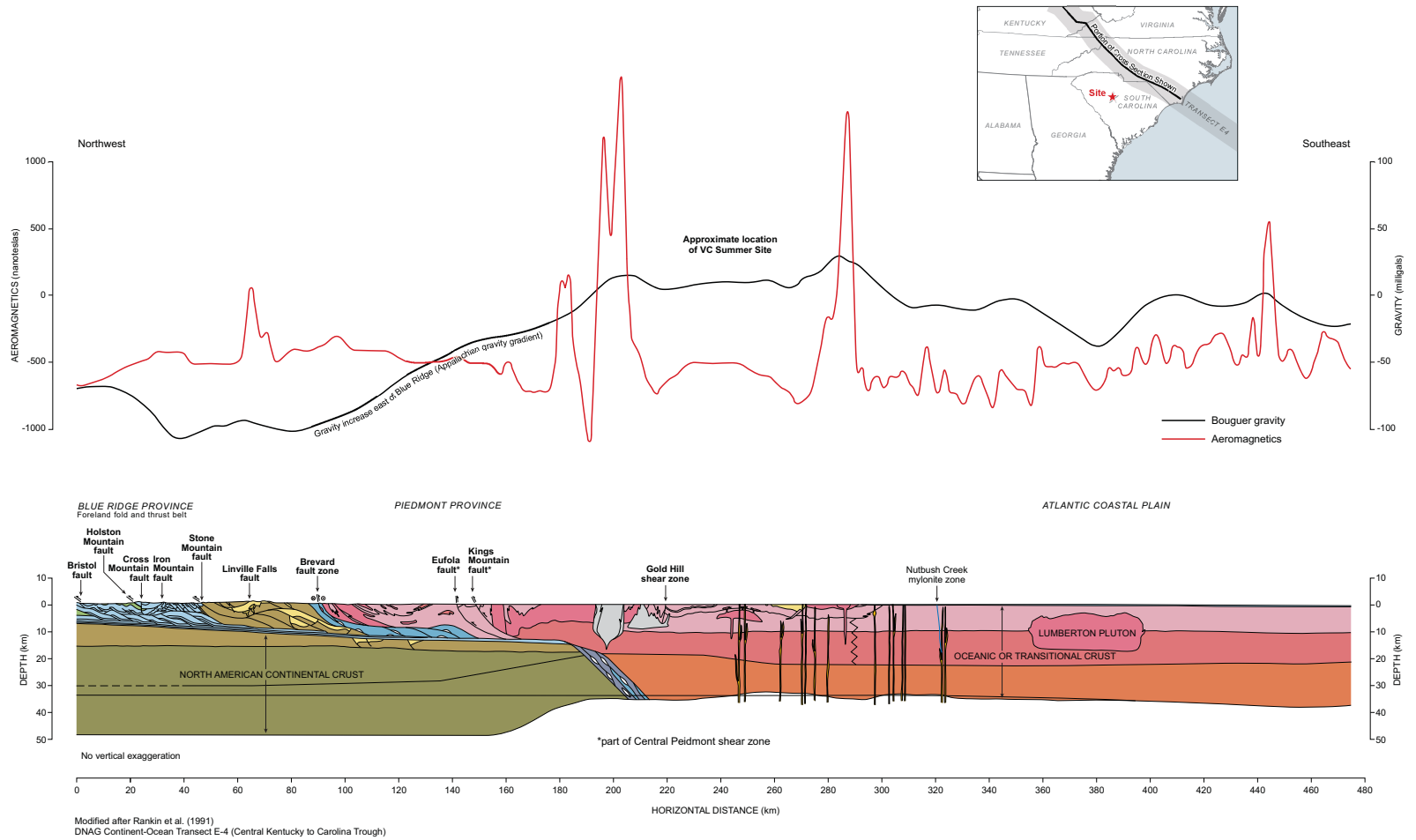


Figure 2.5.1-207. Regional Cross-Section E4

V. C. Summer Nuclear Station, Units 2 and 3 COL Application Part 2, FSAR

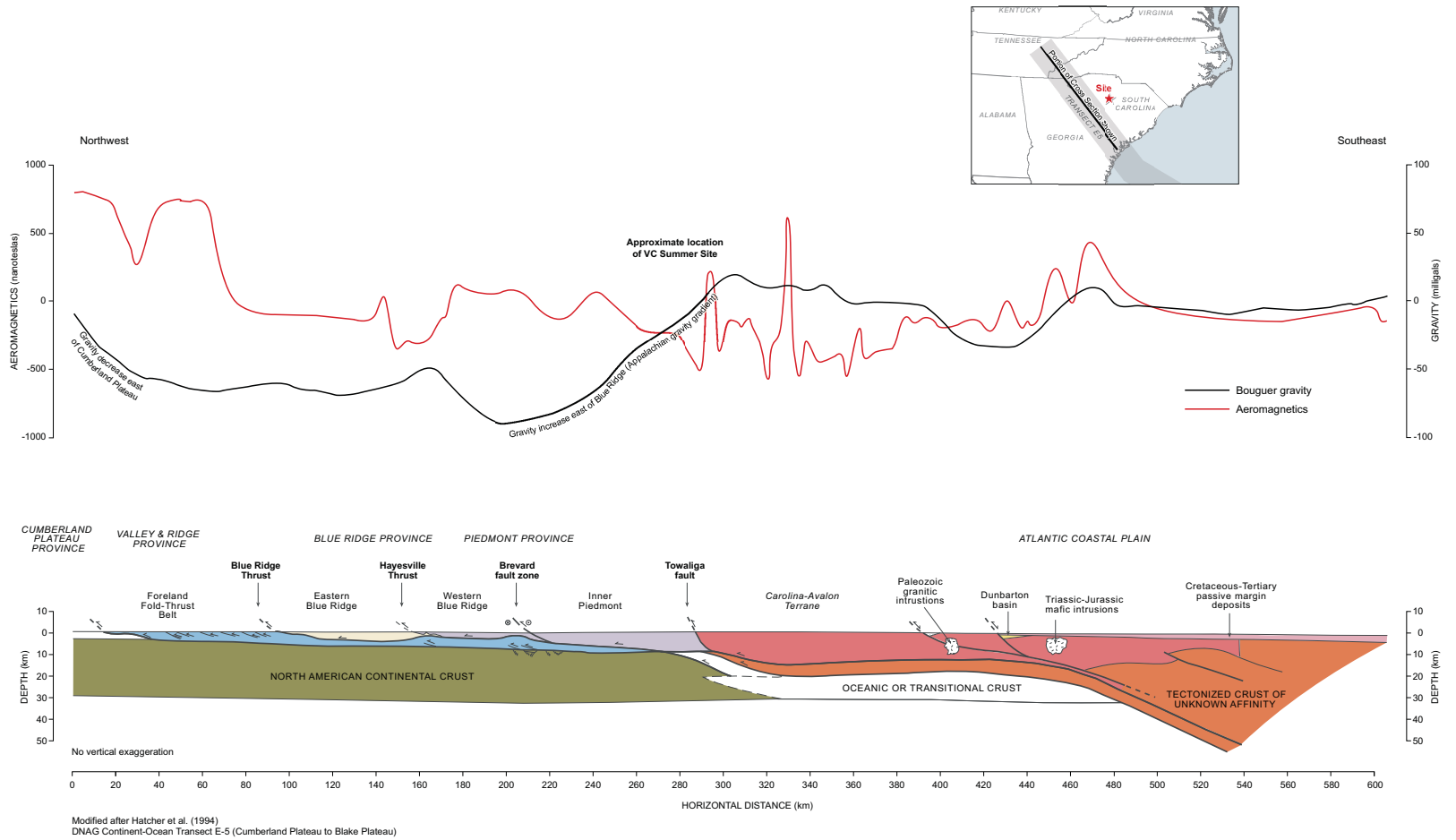
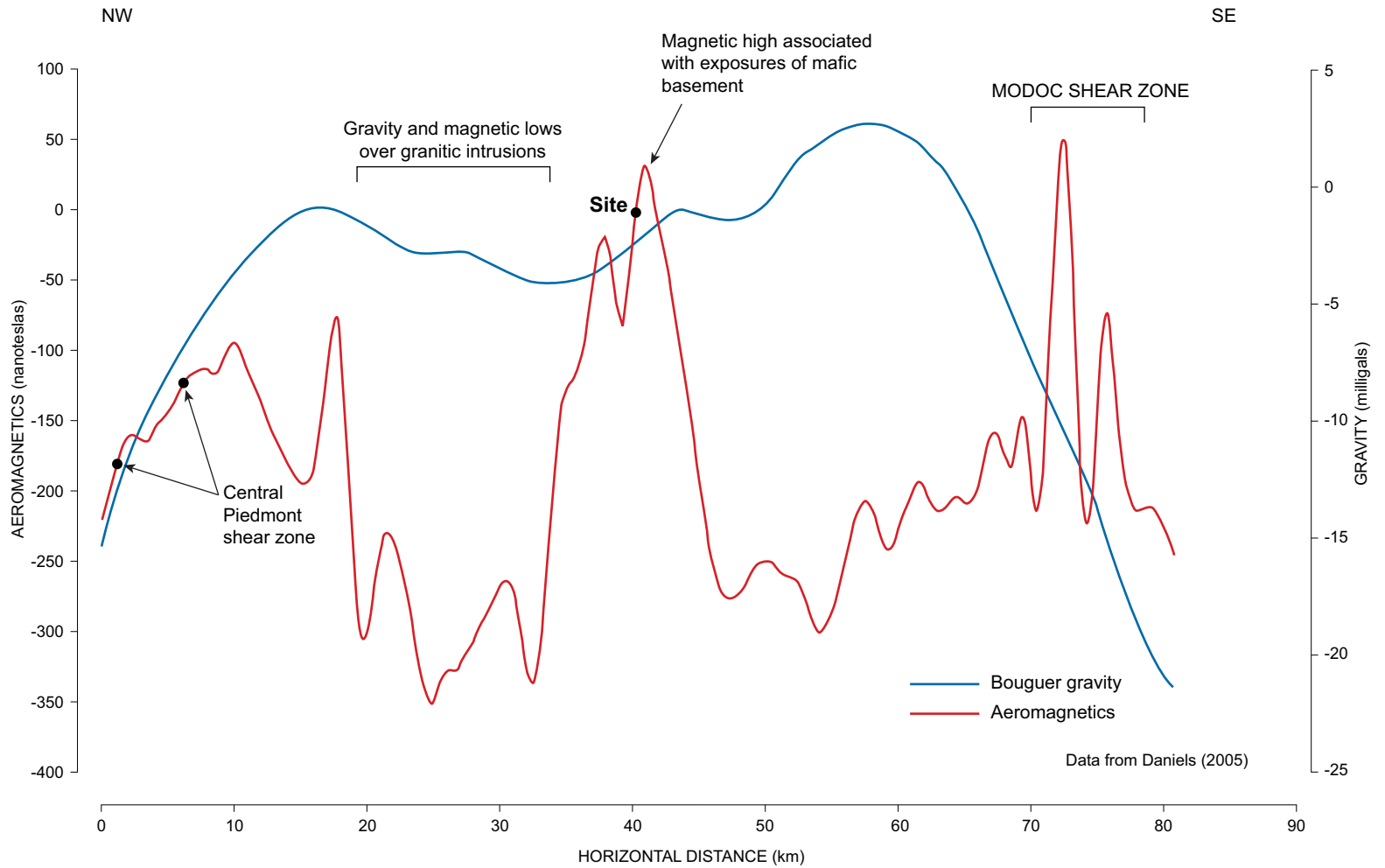


Figure 2.5.1-208. Regional Cross-Section E5

V. C. Summer Nuclear Station, Units 2 and 3
 COL Application
 Part 2, FSAR



See Regional Gravity and Magnetic Maps (Figures 2.5.1-205 and 2.5.1-206) for location of profiles.

Figure 2.5.1-209. Site Vicinity Gravity and Magnetic Profiles

V. C. Summer Nuclear Station, Units 2 and 3
COL Application
Part 2, FSAR

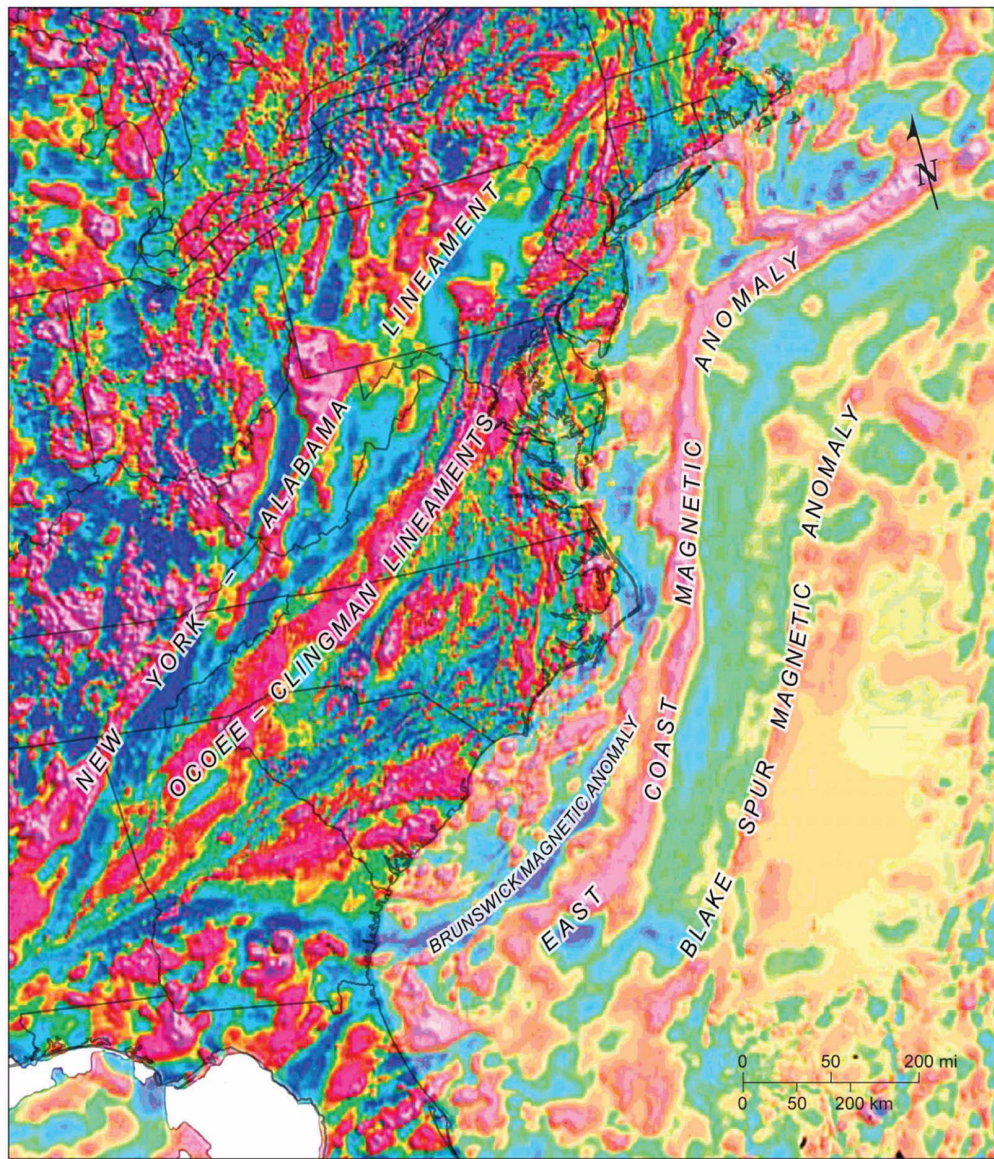


Figure 2.5.1-210. Major Eastern U.S. Aeromagnetic Anomalies

V. C. Summer Nuclear Station, Units 2 and 3 COL Application Part 2, FSAR

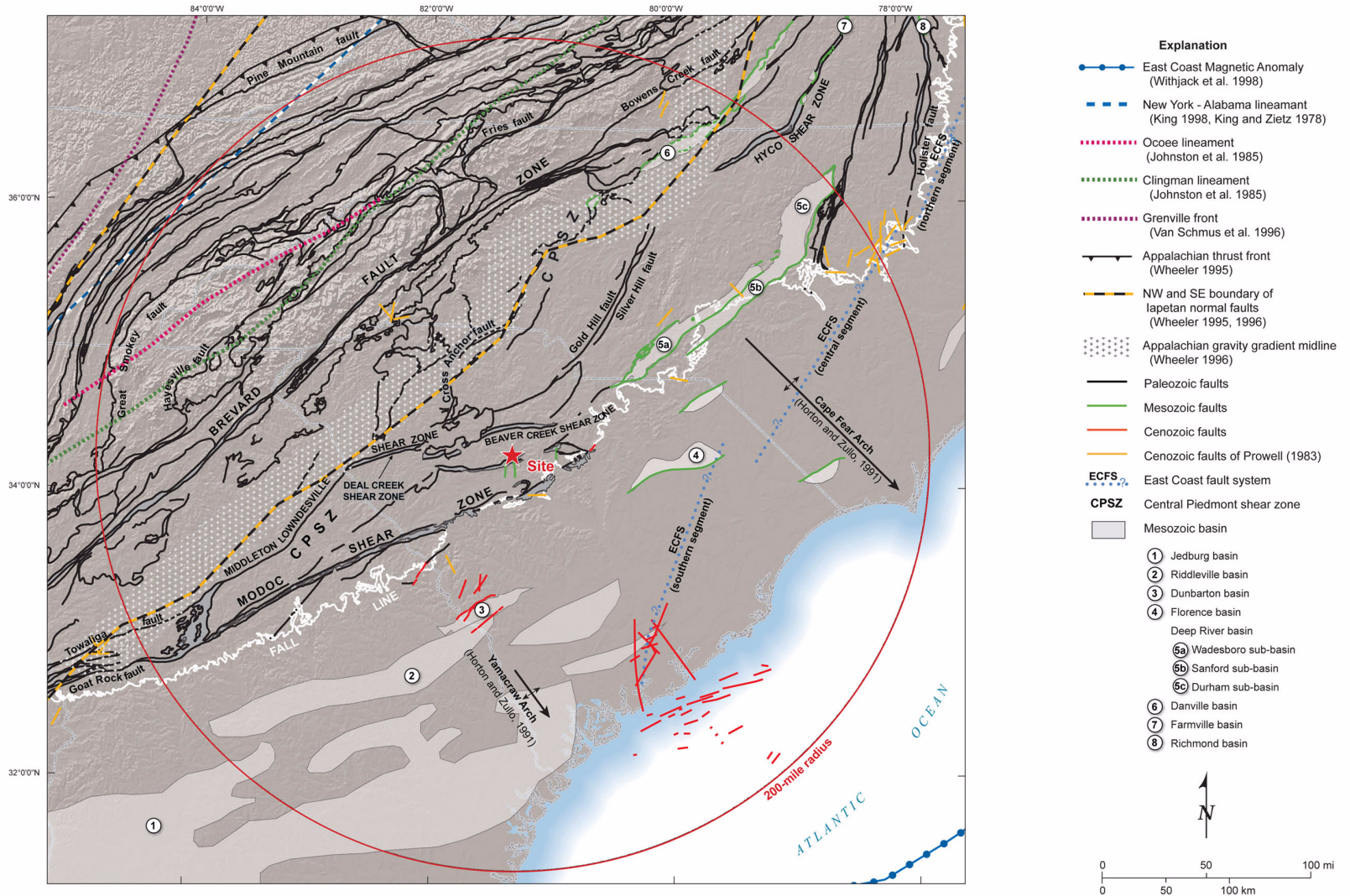


Figure 2.5.1-211 Site Region Tectonic Features

Figure 2.5.1-211. Site Region Tectonic Features

V. C. Summer Nuclear Station, Units 2 and 3
COL Application
Part 2, FSAR

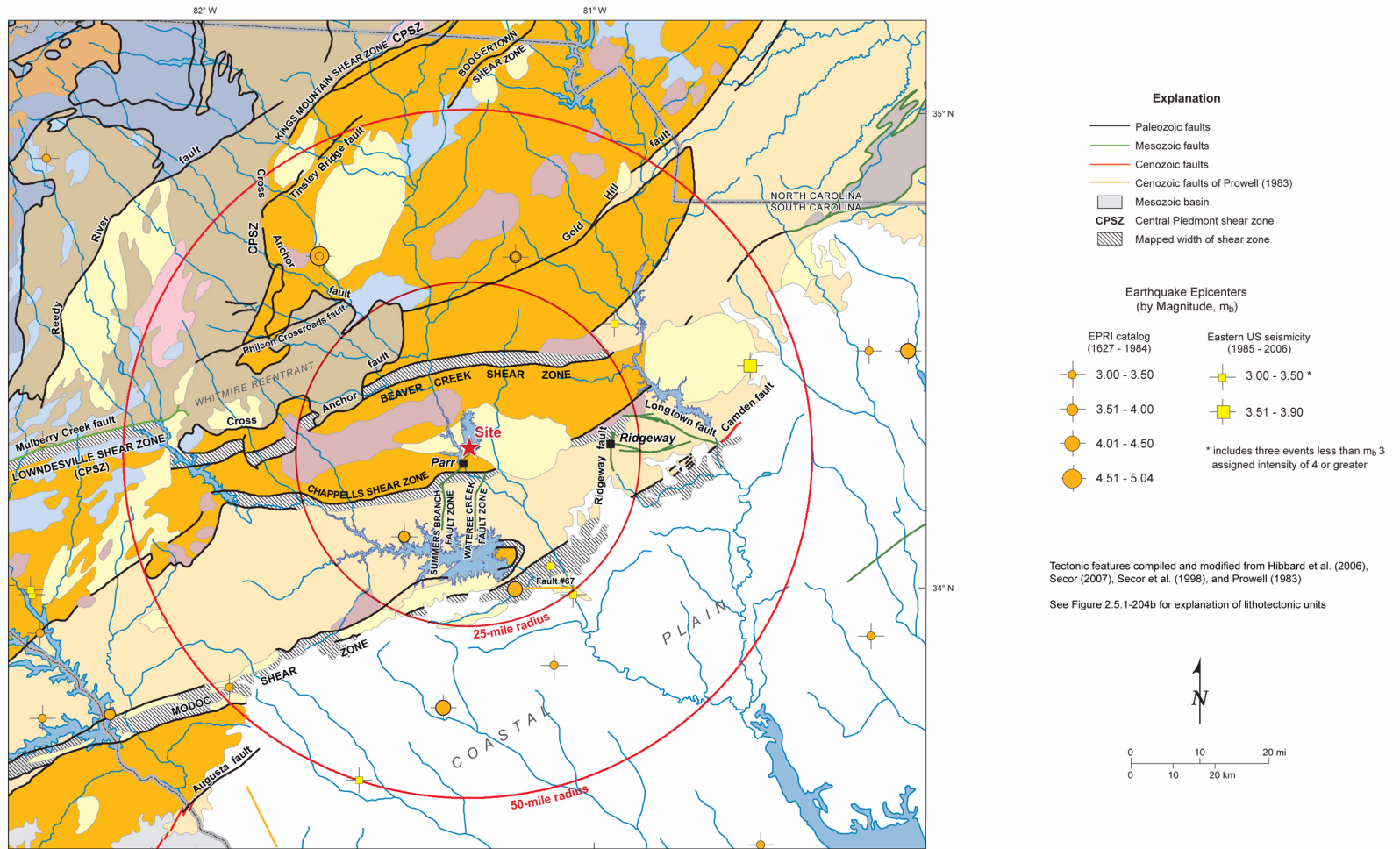
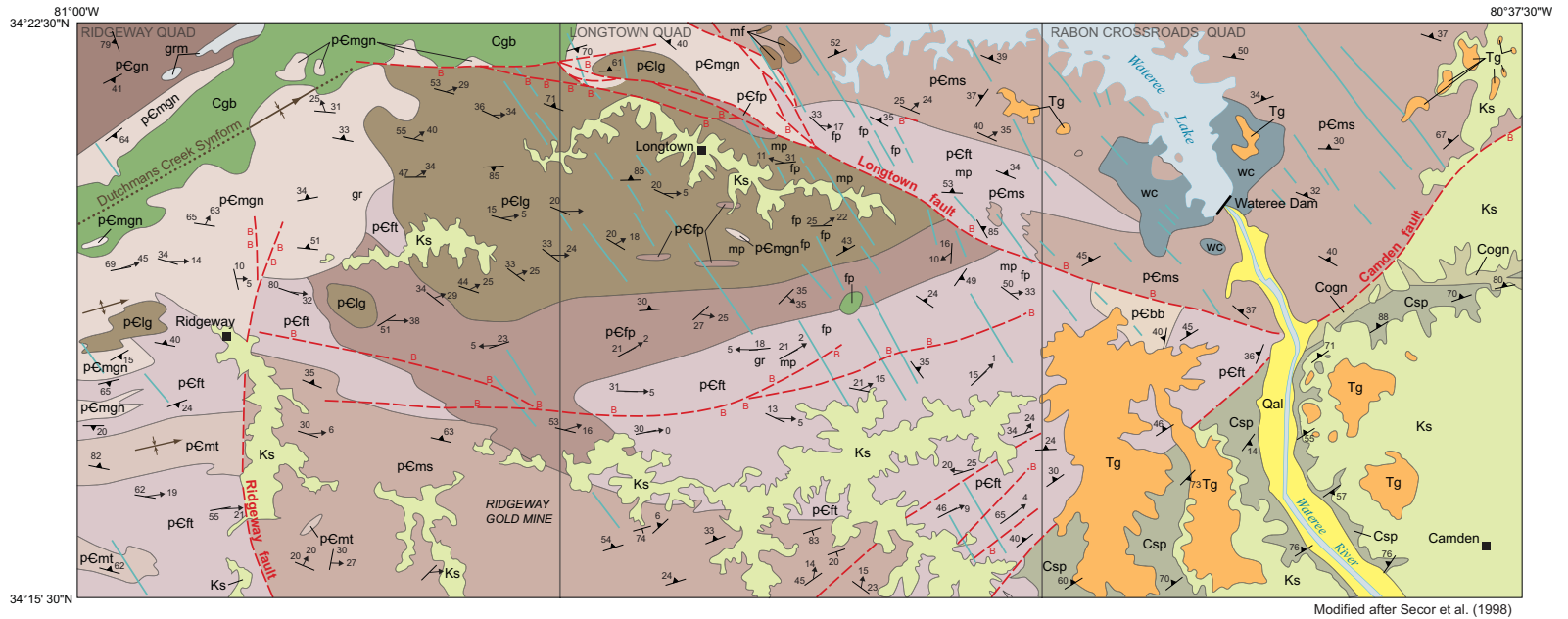


Figure 2.5.1-212. 50-Mile Tectonic Features Map

V. C. Summer Nuclear Station, Units 2 and 3 COL Application Part 2, FSAR



Modified after Secor et al. (1998)

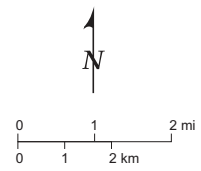
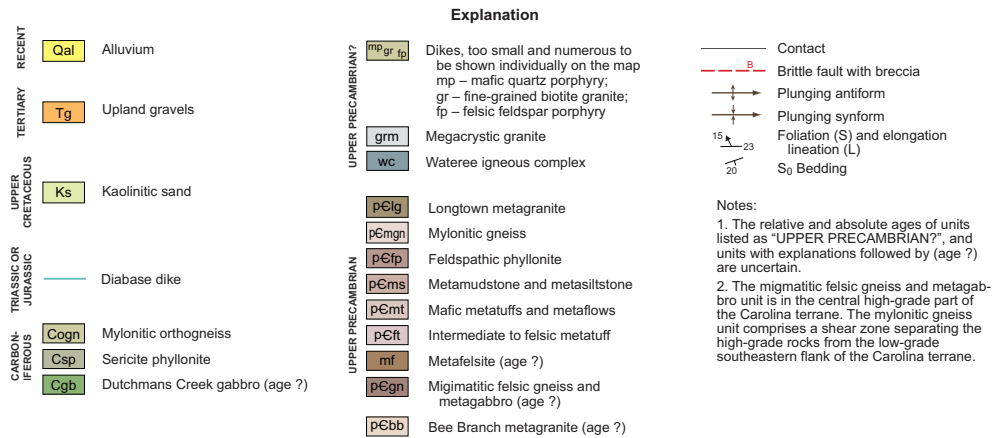


Figure 2.5.1-213. Geologic Map of the Ridgeway-Camden Area