



ITAAC Closure Verification Process

by Edmund Kleeh

of ITAAC Team

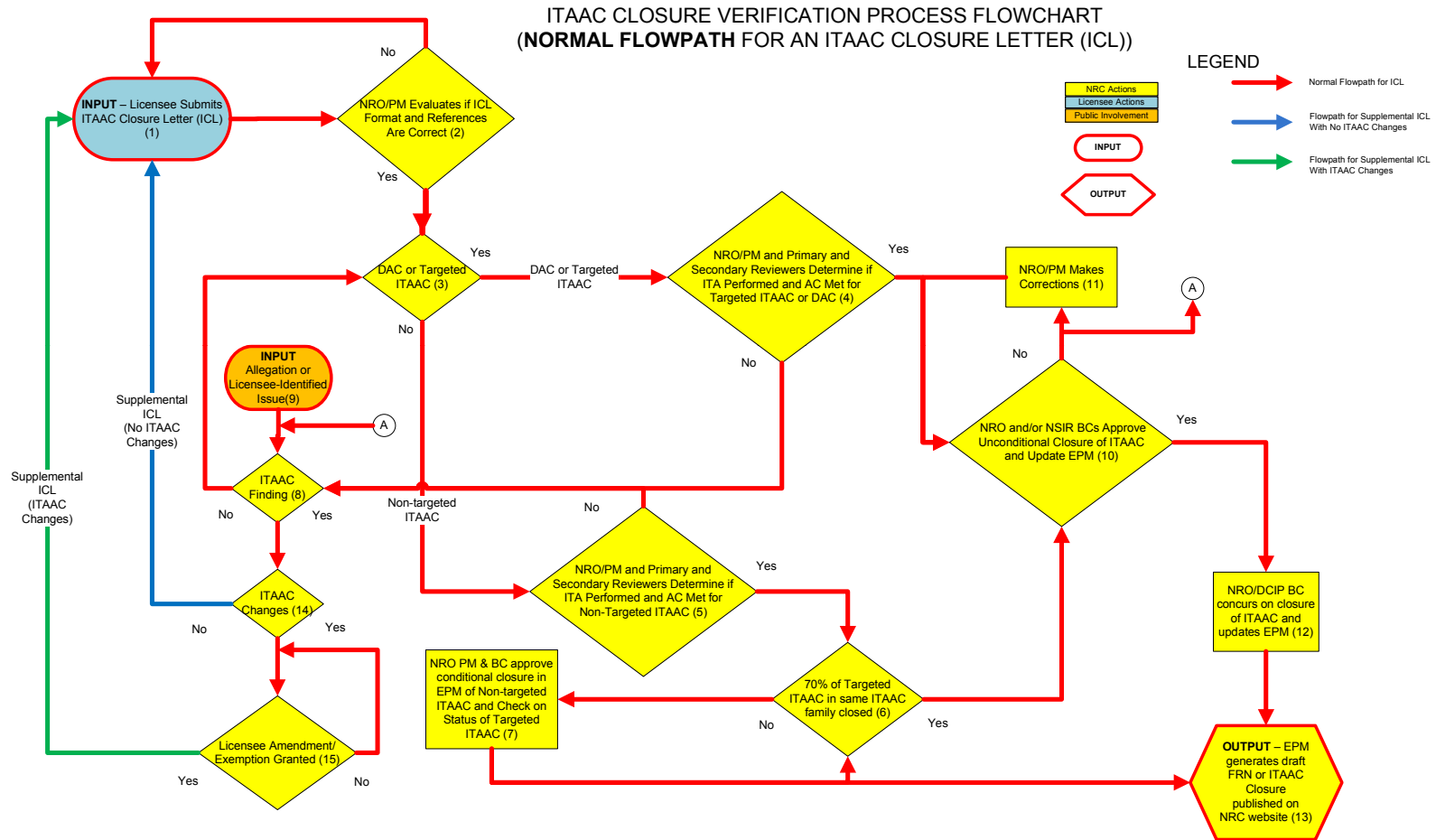
ITAAC CLOSURE VERIFICATION PROCESS FLOWCHART

- THE FLOWCHART HAS TWO SECTIONS THAT ARE NORMALLY COMBINED: (1) NORMAL FLOWPATH FOR AN ITAAC CLOSURE LETTER (ICL), AND (2) ALTERNATE FLOWPATHS FOR AN ICL.
- SLIDES 3 THROUGH 4 DEPICT THE NORMAL FLOWPATH FOR AN ICL FOR INITIAL CLOSURE OF AN ITAAC.
- SLIDES 5 THROUGH 6 DEPICT THE ALTERNATE FLOWPATHS FOR AN ICL FOR RE-CLOSURE OF AN ITAAC OR TO INDICATE ITAAC CLOSURE MAY BE AFFECTED.

NORMAL NRC AND LICENSEE ACTIONS FOR REVIEW OF AN ICL

- THE FOLLOWING SLIDE SHOWS THE NORMAL FLOWPATH OF AN ITAAC CLOSURE LETTER (ICL).
- AFTER THE LICENSEE SUBMITS AN ICL, THE NRC HAS MOST OF THE ACTIONS FOR THE INITIAL CLOSURE OF AN ITAAC.

Normal Flowpath for an ICL



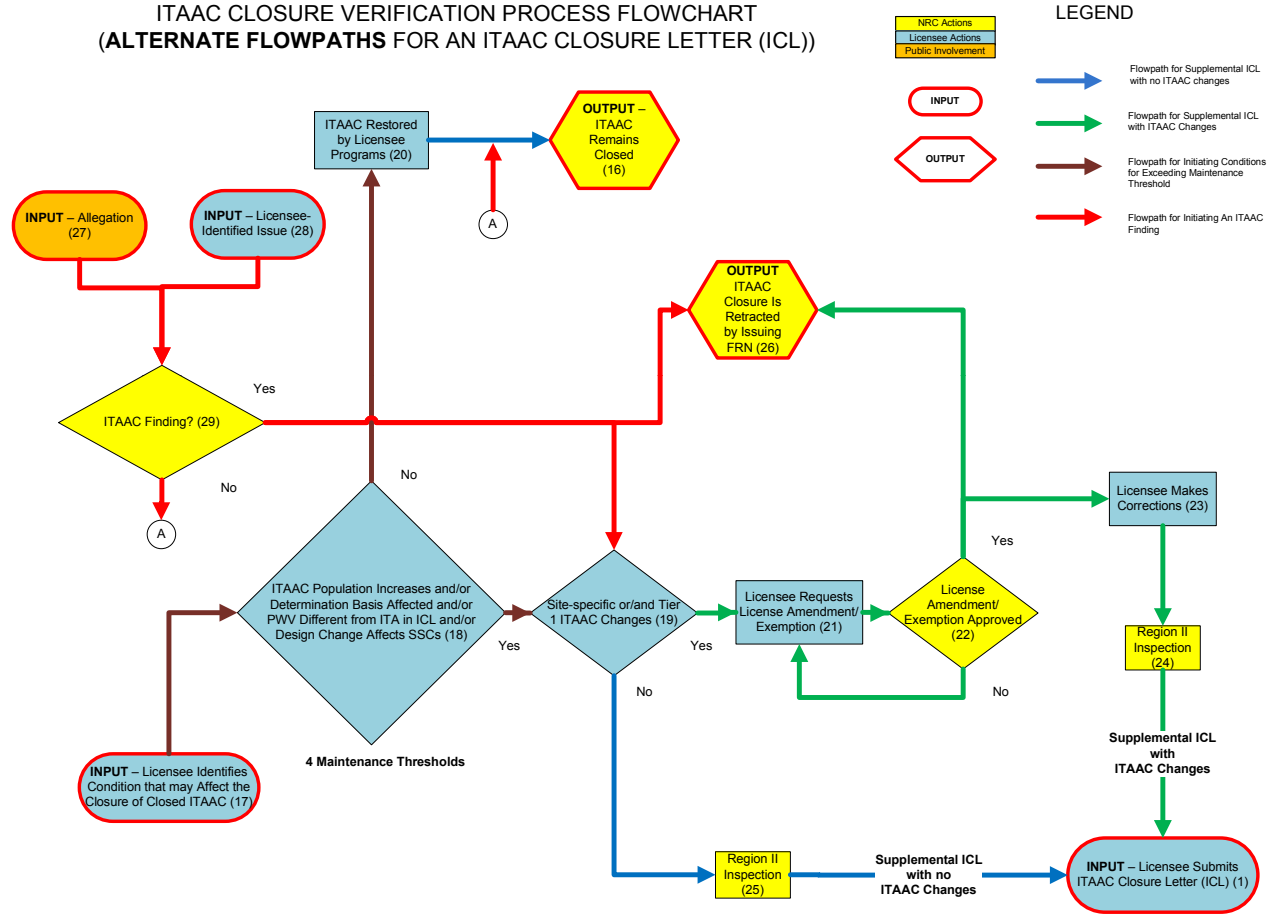
DRAFT COPY

ALTERNATE NRC AND LICENSEE ACTIONS FOR REVIEW OF AN ICL

- THE FOLLOWING SLIDE SHOWS THE ALTERNATE FLOWPATHS FOR SUPPLEMENTAL ICLs FOR AN ITAAC TO INDICATE ITAAC CLOSURE MAY BE AFFECTED OR FOR RE-CLOSURE OF AN ITAAC.
- THE LICENSEE HAS MOST OF THE ACTIONS WITH THE ONLY NRC ACTIONS BEING (1) EVALUATION OF LICENSE AMENDMENT/EXEMPTION REQUESTS, (2) REGION II INSPECTIONS, (3) PUBLISH FRNs TO REVOKE CLOSURE OF AN ITAAC, AND (4) RECEIPT OF SUPPLEMENTAL ICLs.

Alternate Flowpaths for an ICL

ITAAC CLOSURE VERIFICATION PROCESS FLOWCHART
(ALTERNATE FLOWPATHS FOR AN ITAAC CLOSURE LETTER (ICL))



DRAFT COPY