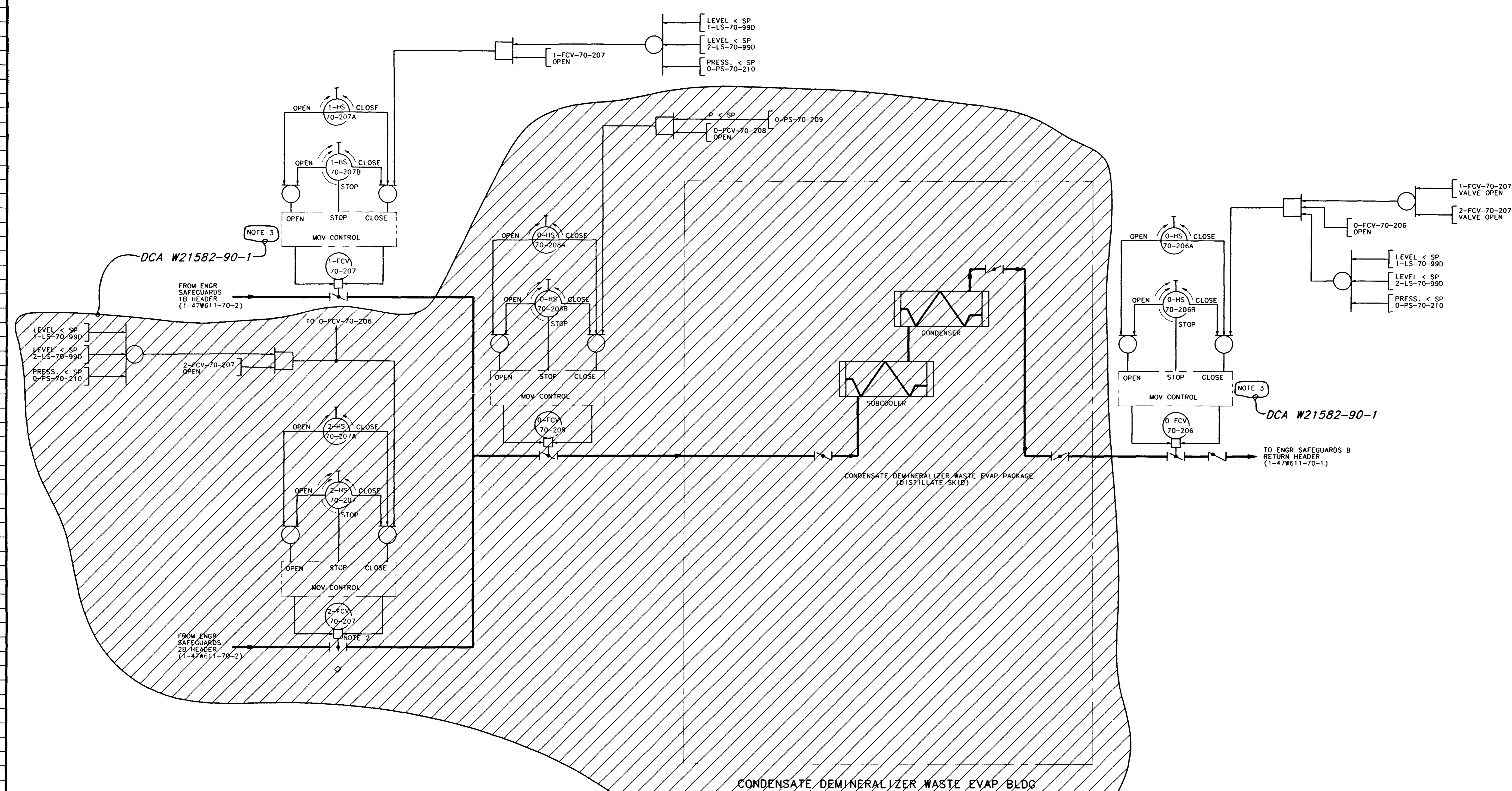


NOTES:
 1. FOR SYMBOLS AND GENERAL NOTES SEE 1-47W611-70-1.
 2. VALVE 2-FCV-70-207 IS ADMINISTRATIVELY LOCKED IN THE CLOSED POSITION. (WITH BREAKER OPEN) (APPENDIX R).
 3. VALVES REFERENCING THIS NOTE ARE MECHANICAL 01/02 INTERFACE POINTS. THEY ARE CLOSED WITH CONTROL AND THERMAL OVERLOAD FUSES REMOVED TO PRECLUDE ADVERSE INTERACTION BETWEEN UNIT 1 AND UNIT 2.

DCA W21582-90-1



SYS 70

4	W-21582-A	1-22-85	CFM	PDH	ESJ	NR	NR	NR	NR	NR	NR
REV	NO.	CHANGE REF	DATE	DFTR	CHKR	DSGN	RVWR	APPD	APPD	APPD	ISSD
SCALE: NTS EXCEPT AS NOTED											
PROJECT FACILITY: POWERHOUSE UNITS 1 & 2											
TITLE: ELECTRICAL LOGIC DIAGRAM COMPONENT COOLING SYSTEM											
1	WATTS BAR NUCLEAR PLANT TENNESSEE VALLEY AUTHORITY									Q	
DESIGN			INITIAL ISSUE			ENGINEERING APPROVAL					
DRAFTER	CHECKER	RO	ISSUE	PER	1 GARY BARNARD						
MIKE BALES/CNC	FRANK LAYFIELD	EAI-3, 10 & RIMS	T28	920121	2 C.A. ATKINS						
DESIGNER	REVIEWER	3 C.C. LYKE FOR MCB									
GARY BARNARD	R.L. FORESTER										
ISSUED BY: W.L. ELLIOTT/CWW											
DATE: 2-7-92 85 E 1-47W611-70-4 R4											

FSAR FIG NO. 9.2-25A