

Greg Gibson
Vice President, Regulatory Affairs

750 East Pratt Street, Suite 1600
Baltimore, Maryland 21202



February 15, 2010

UN#10-015

Mr. J. Rodney Little
Director/State Historic Preservation Officer
Maryland Historic Trust
100 Community Place
Crownsville, MD 21032-2023

Subject: Field Recordation Archival Materials
Camp Conoy (CT-1312) and Baltimore & Drum Point Railroad (CT-1295)
Calvert Cliffs Nuclear Power Plant Unit 3
Calvert County, Maryland

Attn: Mr. Jonathan Sager

References: 1) Greg Gibson (UniStar Nuclear Energy) to J. Rodney Little (Maryland Historic Trust), "Draft Cultural Resources Memorandum of Agreement, Calvert Cliffs Nuclear Power Plant Unit 3, Calvert County, Maryland," dated October 9, 2009.
2) Greg Gibson (UniStar Nuclear Energy) to J. Rodney Little (Maryland Historic Trust), "Data Recovery Plan and Mitigation Plans for Camp Conoy and the Baltimore & Drum Point Railroad, Calvert Cliffs Nuclear Power Plant, Calvert County, Maryland," dated July 27, 2009.
3) Maryland Historic Trust, "Standards and Guidelines for Architectural and Historical Investigations in Maryland," dated 2000.
4) Maryland Historic Trust, "Standards for Submission of Digital Images to the Maryland Inventory of Historic Properties," effective January 2008.

Dear Mr. Little:

As requested by your office in a January 14, 2010, telephone conference between Jonathan Sager (Maryland Historic Trust), Yvonne Abernethy (Constellation Energy), and Barbara Munford and Jared N. Tuk (GAI Consultants, Inc.), enclosed for your review are field recordation archival materials for Camp Conoy (CT-1312) and the Baltimore and Drum Point Railroad (CT-1295), Calvert Cliffs Nuclear Power Plant Unit 3, Calvert County, Maryland. These materials supplement information presented in the Architectural and Historical Resources Field Documentation Update (dated September 24, 2009), submitted by UniStar Nuclear Energy on October 9, 2009 (Reference 1), and are provided in order for your office to complete an evaluation and provide written acceptance of this document. In accordance with Task 3 of the

June 25, 2009, mitigation plans for these two resources (Reference 2), the following archival materials are enclosed:

Camp Conoy

1. Measured drawings of elevations and floor plans for the resource's three contributing buildings on acid-free, archival bond;
2. Overall site plan map on acid-free, archival bond; and
3. Photographic documentation (including high-resolution digital images on gold disc, true black-and-white photograph prints, and negatives).

Baltimore and Drum Point Railroad

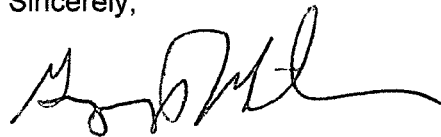
1. Measured drawings of the rail bed in plan view and cross-section on acid-free, archival bond;
2. 3-D depictions of the extant features of the rail bed on acid-free, archival bond;
3. CD-ROM of animated flyovers of the rail bed in 3-D; and
4. Photographs of representative segments of the resource (including high-resolution digital images on gold disc, true black-and-white photograph prints, and negatives).

These archival materials conform to the standards and guidelines detailed in Section II.A of the draft Memorandum of Agreement (MOA) (Reference 1), as well as in *Standards and Guidelines for Architectural and Historical Investigations in Maryland* (Reference 3) and *Standards for Submission of Digital Images to the Maryland Inventory of Historic Properties* (Reference 4).

We would appreciate your response by February 24, 2010. This will allow us to address any concerns you may have in a timely manner. We understand that in addition to your acceptance of these materials, the Memorandum of Agreement must be executed prior to the project engaging in activities that will affect the Railroad or Camp Conoy.

If you have any questions concerning the attached document, please call Mr. Dimitri Lutchenkov at (410) 470-5524.

Sincerely,



Greg Gibson

Enclosure – Archival Materials Documenting Camp Conoy (CT-1312) and the Baltimore and Drum Point Railroad (CT-1295), Calvert Cliffs Nuclear Power Plant Unit 3, Calvert County, Maryland

cc: Kathy Anderson – US Army Corps of Engineers
Susan Gray – Power Plant Research Program (w/o enclosure)
Laura Quinn – NRC Project Manager, Environmental Projects Branch 2

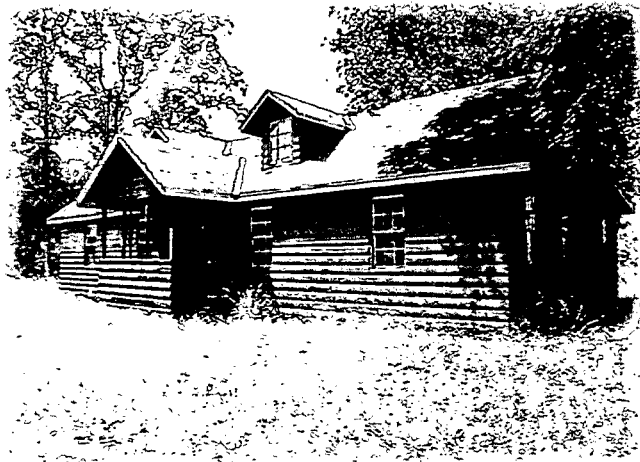
Enclosure

**Archival Materials Documenting Camp Conoy (CT-1312)
and the Baltimore and Drum Point Railroad (CT-1295)
Calvert Cliffs Nuclear Power Plant Unit 3
Calvert County, Maryland**

Documentation of YMCA Camp Conoy (CT-1312)

Mitigation Report Appendix C Archival Materials

(Mitigation of NRHP-Eligible Architectural and Historical Properties, Calvert Cliffs
Nuclear Power Plant, Calvert County, Maryland)



Prepared for
UniStar Nuclear Development, LLC



Prepared by
Tegan Baiocchi, M.A.
Architectural Historian



GAI Project No. C081163.50
January 2010

Appendix C

Archival Materials

- 1. Site Location Map (Figure 7)**
- 2. Measured Drawings (Figures A1 - A15)**
- 3. Photographic Documentation—Photo Log**
- 4. Photographic Documentation—True Black-and-White Photo Prints**
- 5. Photographic Documentation—Negatives**
- 6. Photographic Documentation—Digital Photographs CD**

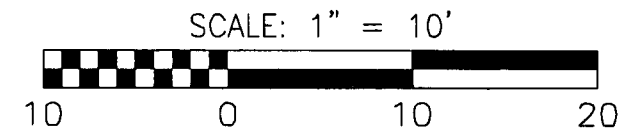
Appendix C
Archival Materials
Site Location Map

Appendix C
Archival Materials
Measured Drawings

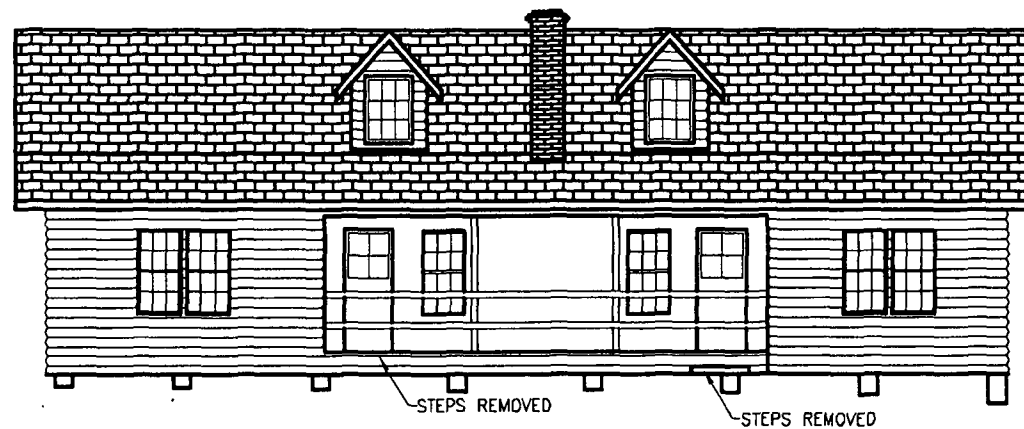
Figure 7: Project Area Showing the Location of Camp Conoy is withheld per section 34 of the National Historic Preservation Act and Title 36 of the Code of Federal Regulations Part 800.11(c)



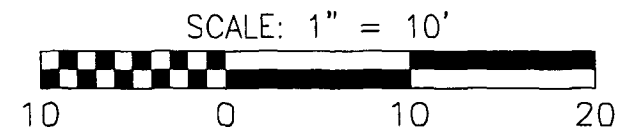
FACADE



<p>FIGURE A1 CAMP CONOY - LODGE CT-1312</p>	DWN. <u>JLA</u>	CHKD. _____	SCALE:
	APPD. <u>MGH</u>	DATE _____	1"=10'
<p>CALVERT CLIFFS NUCLEAR POWER PLANT CALVERT COUNTY, MARYLAND</p>	DRAWING NUMBER		
	<p>C081163-00-000-00-E-A002</p>		

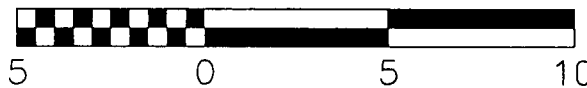


NORTHEAST ELEVATION



<p>FIGURE A2 CAMP CONOY - LODGE CT-1312</p>	DWN. <u>JLA</u>	CHKD. _____	SCALE:
	APPD. <u>MGH</u>	DATE _____	1"=10'
<p>CALVERT CLIFFS NUCLEAR POWER PLANT CALVERT COUNTY, MARYLAND</p>	DRAWING NUMBER		
	<p><u>C081163-00-000-00-E-A002</u></p>		





gai consultants

FIGURE A3
CAMP CONOY - LODGE
CT-1312

CALVERT CLIFFS NUCLEAR POWER PLANT
CALVERT COUNTY, MARYLAND

DWN. JLA

CHKD. _____

SCALE:

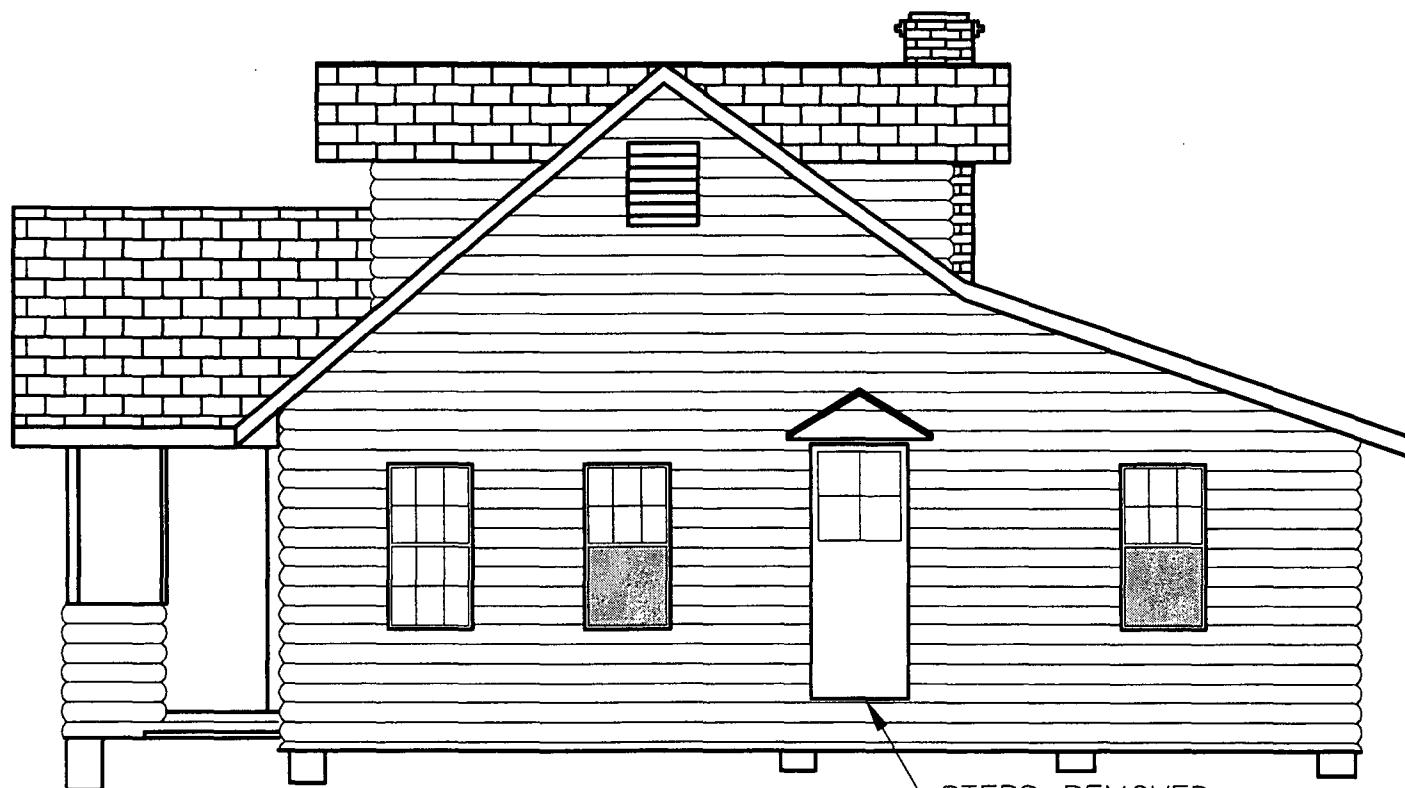
APPD. MGH

DATE _____

1"=5'

DRAWING NUMBER

C081163-00-000-00-E-A002



SOUTHEAST ELEVATION

STEPS REMOVED

SCALE: 1" = 5'



5 0 5 10



gai consultants

FIGURE A4
CAMP CONOY - LODGE
CT-1312

CALVERT CLIFFS NUCLEAR POWER PLANT
CALVERT COUNTY, MARYLAND

DWN. JLA

CHKD. _____

SCALE:

APPD. MGH

DATE _____

1"=5'

DRAWING NUMBER

C081163-00-000-00-E-A002



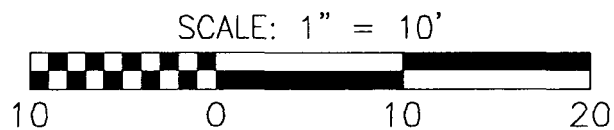
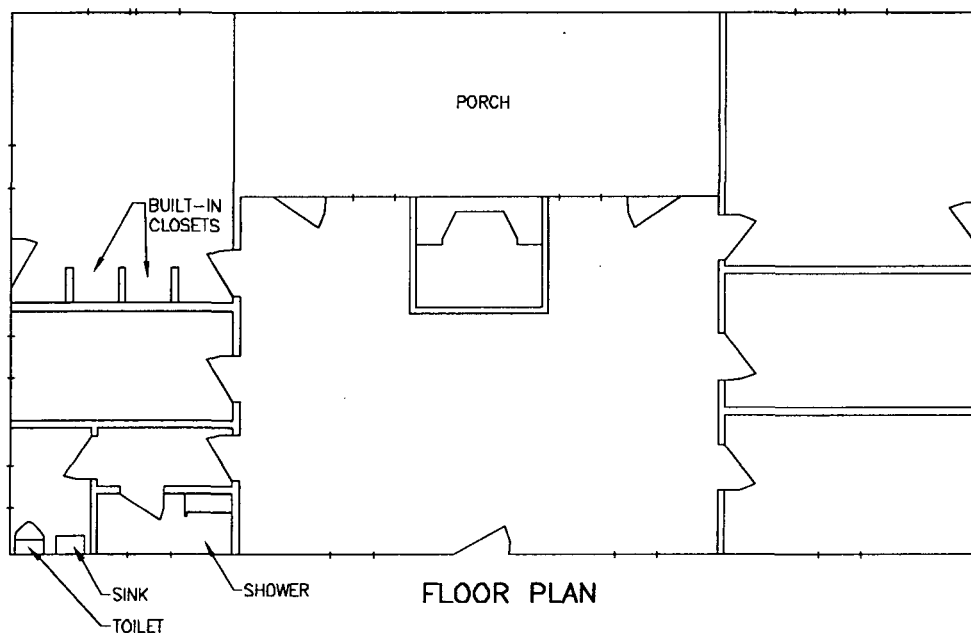


FIGURE A5
CAMP CONOY - LODGE
CT-1312

DWN. JLA

CHKD. _____

SCALE:

APPD. MGH

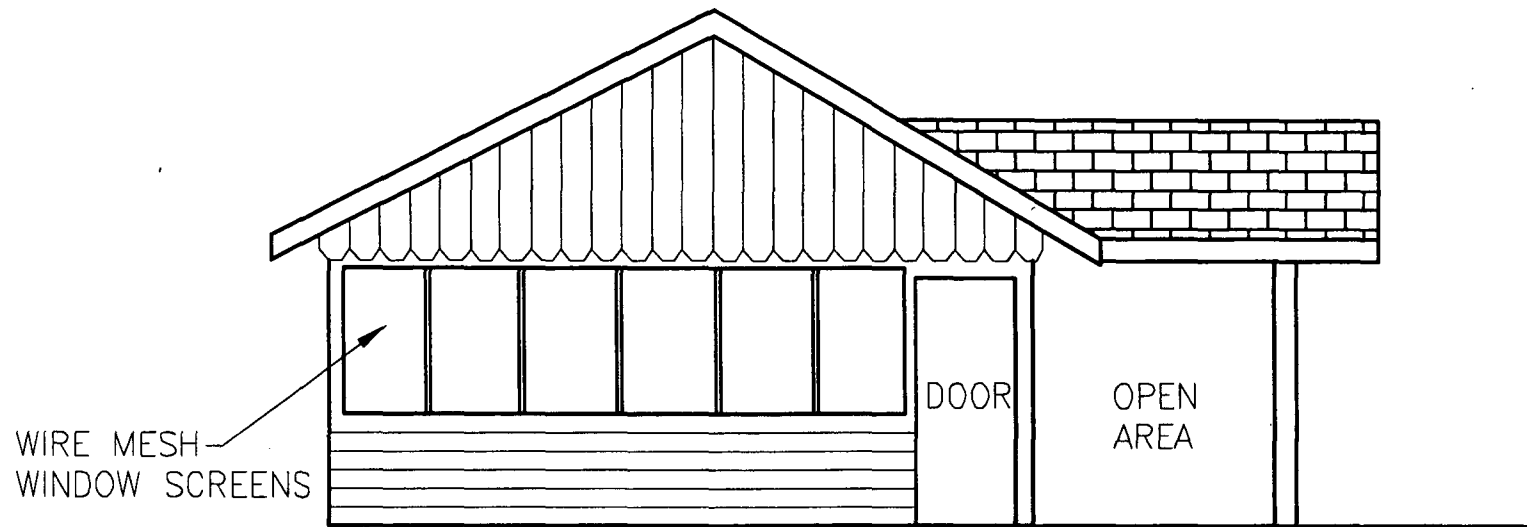
DATE _____

1"=10'

CALVERT CLIFFS NUCLEAR POWER PLANT
CALVERT COUNTY, MARYLAND

DRAWING NUMBER

C081163-00-000-00-E-A003



FACADE ELEVATION

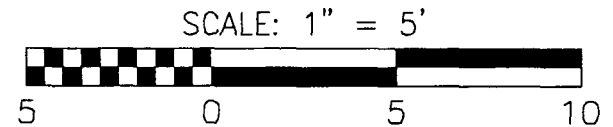



FIGURE A6 CAMP CONOY - SHED CT-1312	DWN. <u>JLA</u>	CHKD. _____	SCALE: 1"=5'
	APPD. <u>MGH</u>	DATE _____	
CALVERT CLIFFS NUCLEAR POWER PLANT CALVERT COUNTY, MARYLAND	DRAWING NUMBER		
	<u>C081163-00-000-00-E-A001</u>		
			 REV



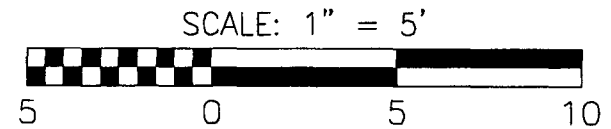
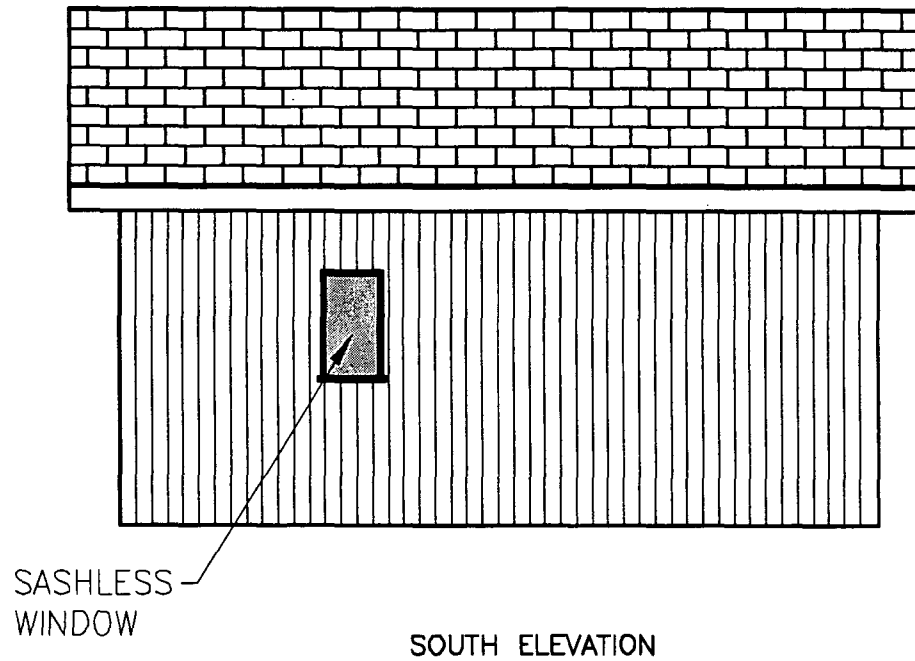

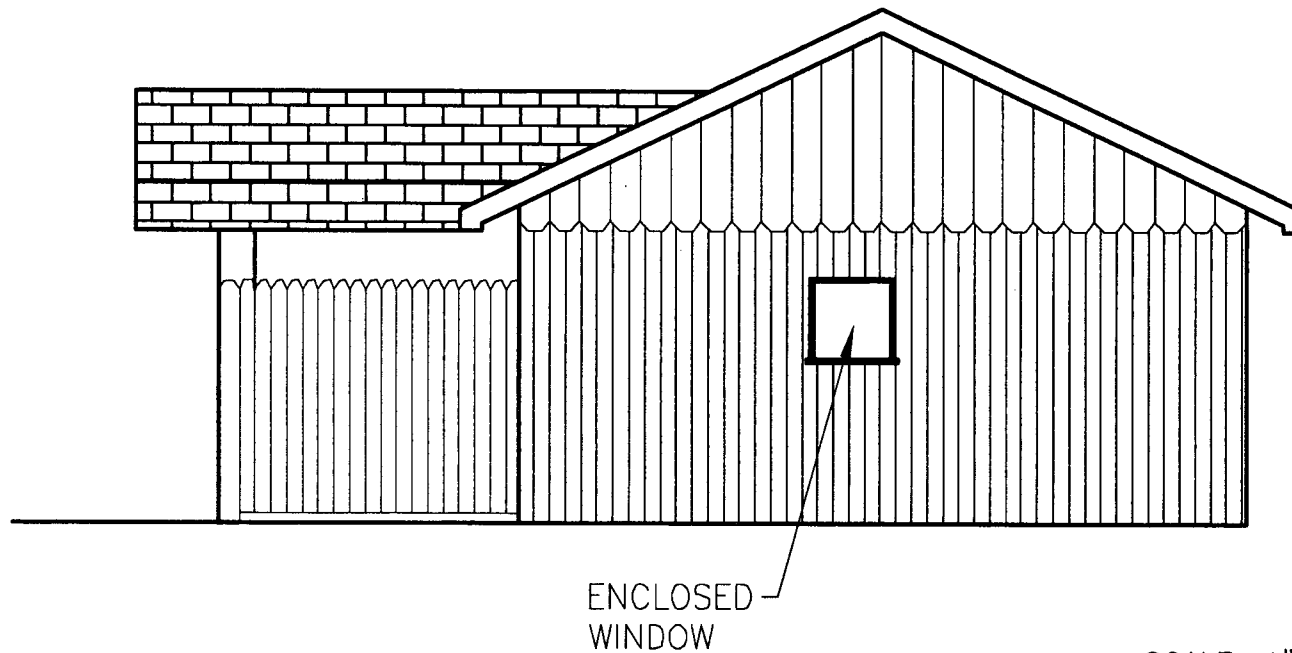


FIGURE A7 CAMP CONOY - SHED CT-1312	DWN. <u>JLA</u>	CHKD. _____	SCALE: 1"=5'
	APPD. <u>MGH</u>	DATE _____	
CALVERT CLIFFS NUCLEAR POWER PLANT CALVERT COUNTY, MARYLAND	DRAWING NUMBER		
	<u>C081163-00-000-00-E-A001</u>		
			 REV



ENCLOSED
WINDOW

WEST ELEVATION

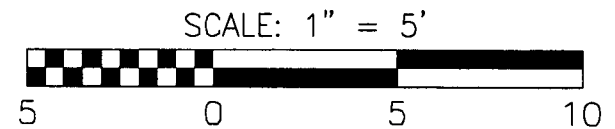

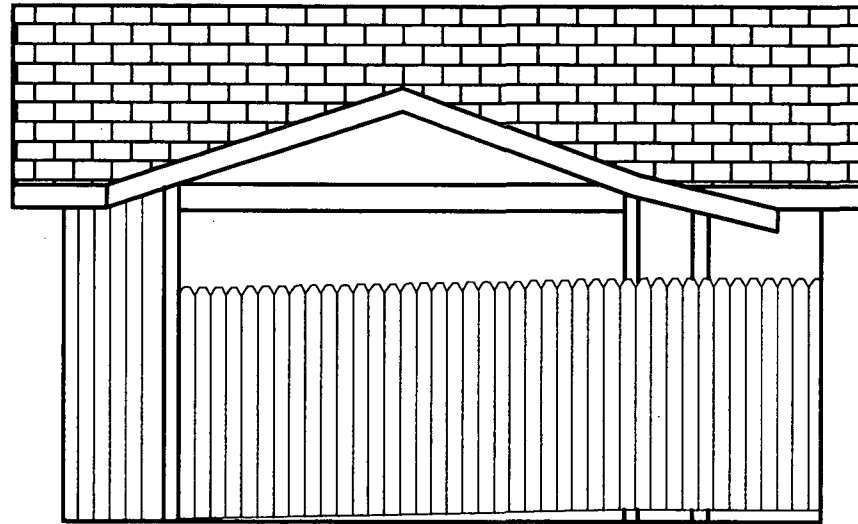


FIGURE A8 CAMP CONOY - SHED CT-1312	DWN. <u>JLA</u>	CHKD. _____	SCALE: 1"=5'
	APPD. <u>MGH</u>	DATE _____	
CALVERT CLIFFS NUCLEAR POWER PLANT CALVERT COUNTY, MARYLAND	DRAWING NUMBER		
	<u>C081163-00-000-00-E-A001</u>		
			 REV





NORTH ELEVATION

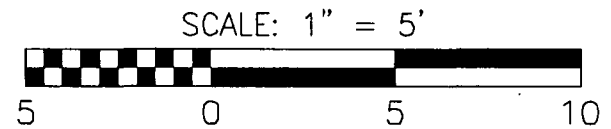



FIGURE A9 CAMP CONOY - SHED CT-1312	DWN. <u>JLA</u>	CHKD. _____	SCALE: 1"=5'
	APPD. <u>MGH</u>	DATE _____	
CALVERT CLIFFS NUCLEAR POWER PLANT CALVERT COUNTY, MARYLAND	DRAWING NUMBER		
	<u>C081163-00-000-00-E-A001</u>		
			REV



1/15/2010

GAI CAD FILE: P:\PT\2008\081163\00\CAD\CAMP CONOY DWGS\081163-00-000-00-A001SHED.dwg

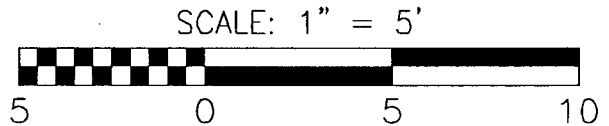
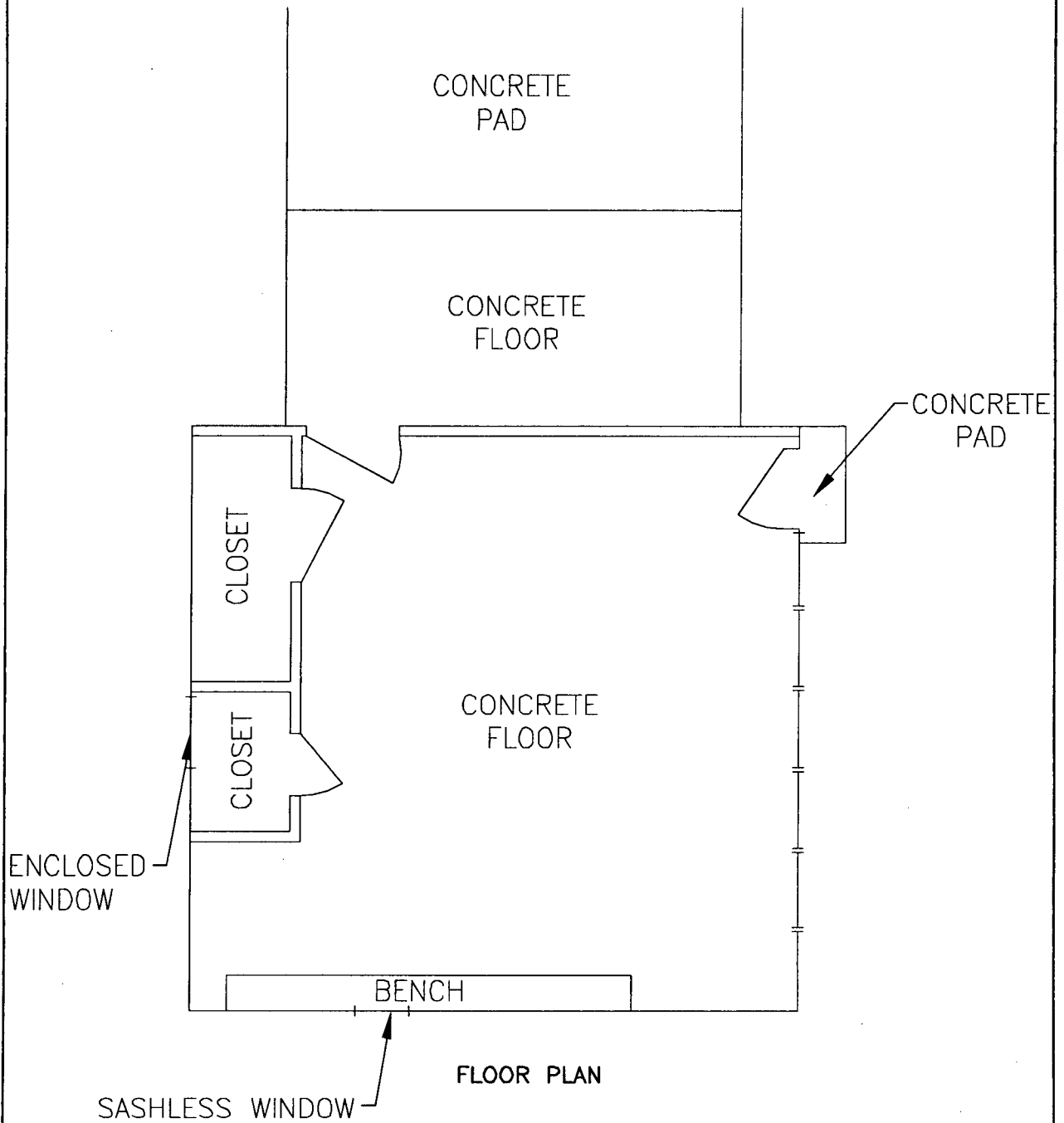


FIGURE A10
CAMP CONOY - SHED
CT-1312

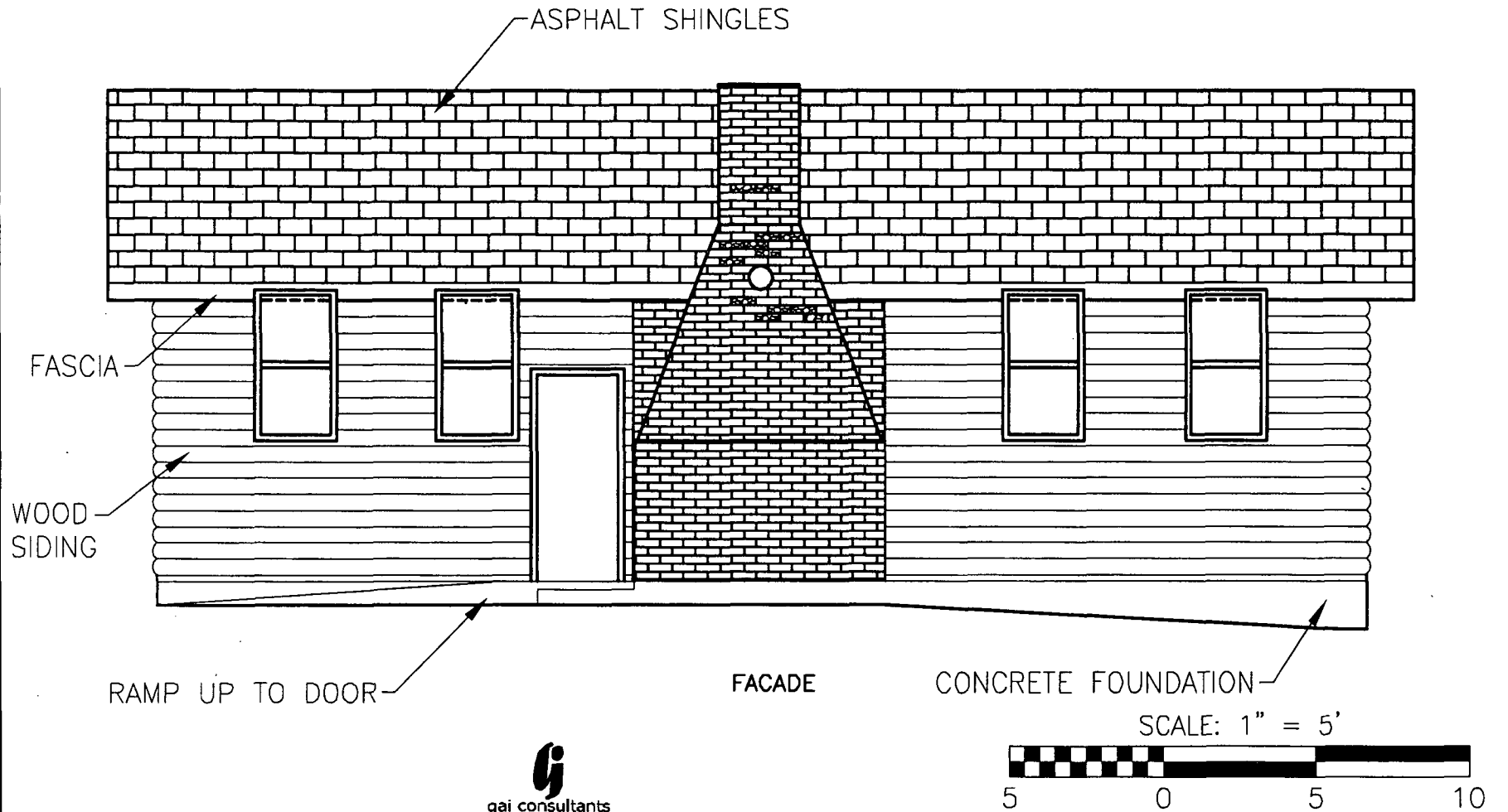
DWN. <u>JLA</u>	CHKD. _____	SCALE:
APPD. <u>MGH</u>	DATE _____	1"=5'

CALVERT CLIFFS NUCLEAR POWER PLANT
CALVERT COUNTY, MARYLAND

DRAWING NUMBER

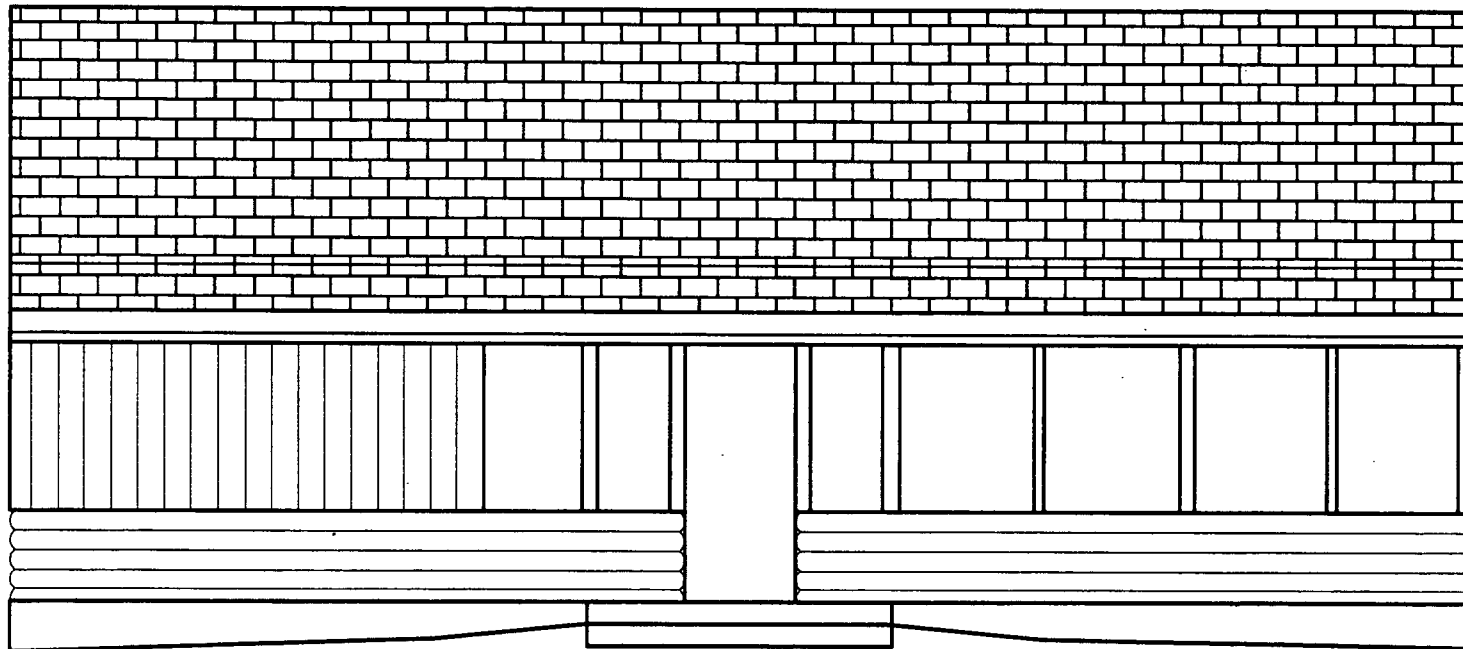
C081163-00-000-00-E-A001





<p>FIGURE A11 CAMP CONOY EAGLE'S DEN CT-1312</p>	DWN. <u>JLA</u>	CHKD. _____	SCALE:
	APPD. <u>MGH</u>	DATE _____	<u>1"=5'</u>
<p>CALVERT CLIFFS NUCLEAR POWER PLANT CALVERT COUNTY, MARYLAND</p>	DRAWING NUMBER		
	<p><u>C081163-00-000-00-E-A002</u></p>		





NORTHEAST ELEVATION

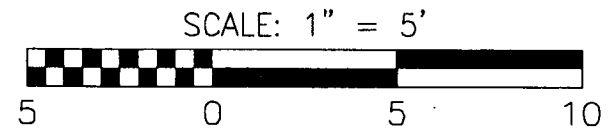

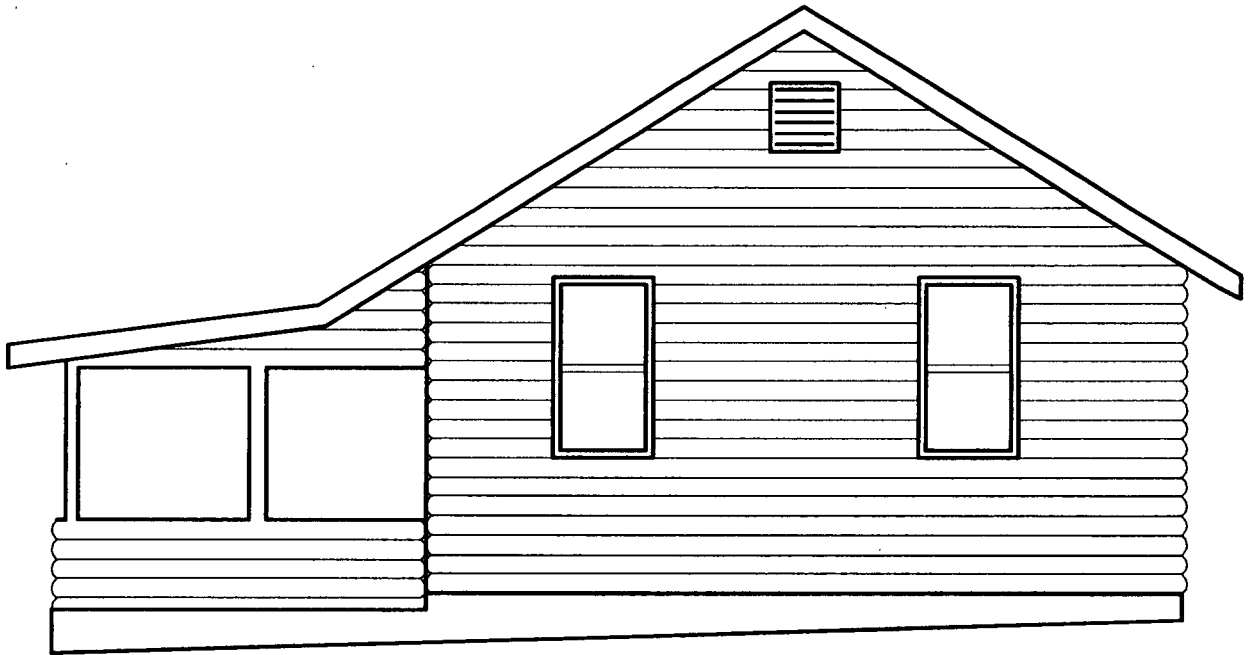


FIGURE A12 CAMP CONOY EAGLE'S DEN CT-1312	DWN. <u>JLA</u>	CHKD. _____	SCALE: 1"=5'
	APPD. <u>MGH</u>	DATE _____	
CALVERT CLIFFS NUCLEAR POWER PLANT CALVERT COUNTY, MARYLAND	DRAWING NUMBER		
	<u>C081163-00-000-00-E-A002</u>		
			REV



1/15/2010

GAI CAD FILE: P:\PIT\2008\C081163\00\CADD\CAMP CONOY DWGS\C081163-00-000-00-A002 DEN.dwg



NORTHWEST ELEVATION

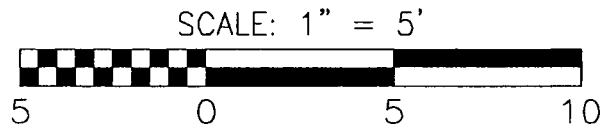


FIGURE A13
CAMP CONOY EAGLE'S DEN
CT-1312

DWN. JLA

CHKD. _____

SCALE:

APPD. MGH

DATE _____

1"=5'

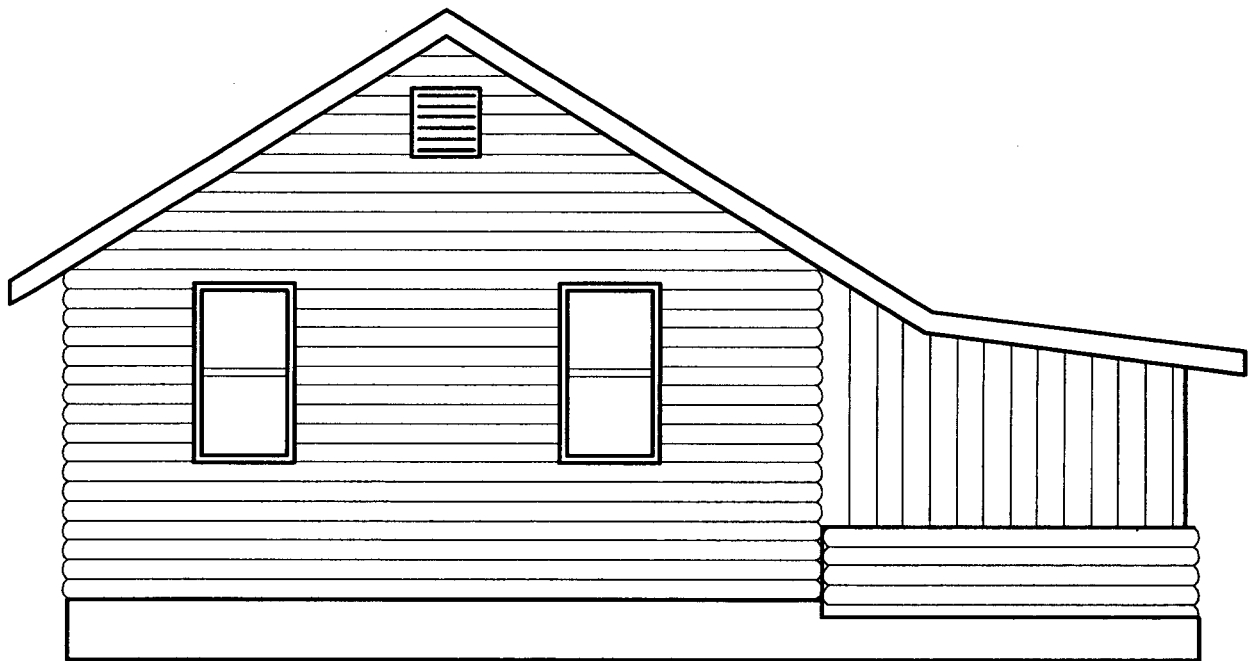
CALVERT CLIFFS NUCLEAR POWER PLANT
CALVERT COUNTY, MARYLAND

DRAWING NUMBER

C081163-00-000-00-E-A002

1/15/2010

GAI CAD FILE: P:\PT\2008\081163\00\CAUD\CAMP CONOY DWGS\081163-00-000-00-A002 DEN.dwg



SOUTHEAST ELEVATION

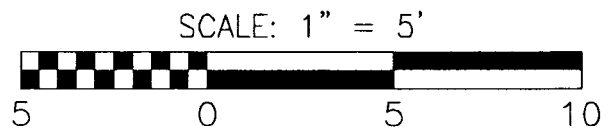


FIGURE A14
CAMP CONOY EAGLE'S DEN
CT-1312

DWN. JLA

CHKD. _____

SCALE:

APPD. MGH

DATE _____

1"=5'

CALVERT CLIFFS NUCLEAR POWER PLANT
CLAVERT COUNTY, MARYLAND

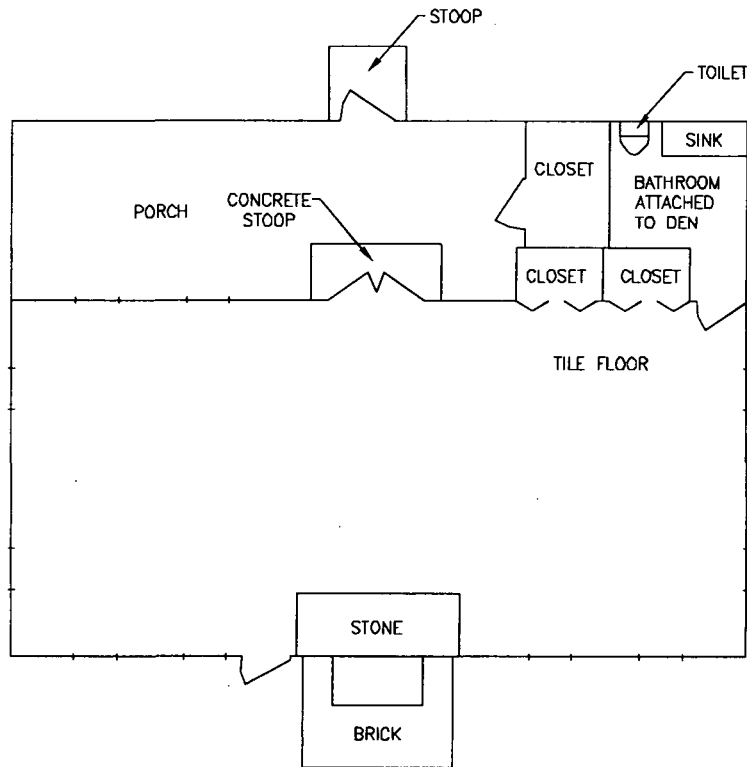
DRAWING NUMBER

C081163-00-000-00-E-A002

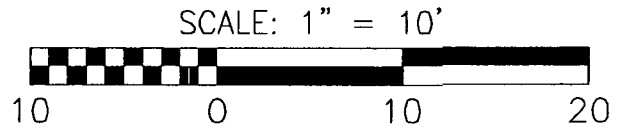
REV

1/15/2010

GAJ CAD FILE: P:\PT\2008\COB1163\00\CADD\CAMP CONOY DWGS\COB1163-00-000-00-A002 DEN.dwg



FLOOR PLAN



<p>FIGURE A15 CAMP CONOY EAGLE'S DEN CT-1312</p>	<p>DWN. <u>JLA</u></p>	<p>CHKD. _____</p>	<p>SCALE:</p>
	<p>APPD. <u>MGH</u></p>	<p>DATE _____</p>	<p>1"=10'</p>
<p>DRAWING NUMBER</p>			
<p><u>C081163-00-000-00-E-A002</u></p>			
<p>CALVERT CLIFFS NUCLEAR POWER PLANT CALVERT COUNTY, MARYLAND</p>			
<p>REV</p>			

Appendix C
Archival Materials
Photographic Documentation
Photo Log

GAI CONSULTANTS, INC.
PHOTO LOG

MIHP # CT-1312
GAI PROJECT # C081163

ROLL # 1
COLOR B/W x
INK / PAPER True Black & White Prints /
ILFORD Express Digital B&W Silver Gelatin RC Paper

File Name	Description	Direction	Date
CT-1312_2009-08-10_01	Camp Conoy Lodge Interior Dormer Window	NE	8/10/09
CT-1312_2009-08-10_02	Camp Conoy Lodge Fireplace	NE	8/10/09
CT-1312_2009-08-10_03	Camp Conoy Lodge Interior Trim Detail – Pendant	SW	8/10/09
CT-1312_2009-08-10_04	Camp Conoy Lodge Interior Doors to Bedrooms	NE	8/10/09
CT-1312_2009-08-10_05	Camp Conoy Lodge Interior Bedroom	SW	8/10/09
CT-1312_2009-08-10_06	Camp Conoy Lodge Interior Main/Central Room	SE	8/10/09
CT-1312_2009-08-10_07	Camp Conoy Lodge Interior Fireplace	NE	8/10/09
CT-1312_2009-08-10_08	Camp Conoy Lodge Interior Front Door	SW	8/10/09
CT-1312_2009-08-10_09	Camp Conoy Lodge Interior Fireplace	NW	8/10/09
CT-1312_2009-08-10_21	Camp Conoy Shed South Elevation	N	8/10/09
CT-1312_2009-08-10_22	Camp Conoy Shed West Elevation	E	8/10/09
CT-1312_2009-08-10_23	Camp Conoy Shed North Elevation	S	8/10/09
CT-1312_2009-08-10_24	Camp Conoy Shed Façade	W	8/10/09
CT-1312_2009-08-10_25	Camp Conoy Shed Interior Closets and Bench	S	8/10/09
CT-1312_2009-08-10_26	Camp Conoy Shed Interior Closets	NW	8/10/09
CT-1312_2009-08-10_27	Camp Conoy Shed Interior Front Door	N	8/10/09
CT-1312_2009-08-10_28	Camp Conoy Eagles Den Exterior Chimney Stack Detail	NE	8/10/09
CT-1312_2009-08-10_29	Camp Conoy Eagles Den Northeast Elevation	S	8/10/09
CT-1312_2009-08-10_30	Camp Conoy Eagles Den Northwest Elevation	S	8/10/09
CT-1312_2009-08-10_31	Camp Conoy Eagles Den Southeast Elevation	NW	8/10/09
CT-1312_2009-08-10_32	Camp Conoy Eagles Den Façade	N	8/10/09
CT-1312_2009-08-10_33	Camp Conoy Eagles Den Porch	SE	8/10/09
CT-1312_2009-08-10_34	Camp Conoy Eagles Den Interior Fireplace	W	8/10/09
CT-1312_2009-08-10_35	Camp Conoy Eagles Den Interior Fireplace	SW	8/10/09
CT-1312_2009-08-10_36	Camp Conoy Eagles Den Interior	SE	8/10/09

GAI CONSULTANTS, INC.
PHOTO LOG

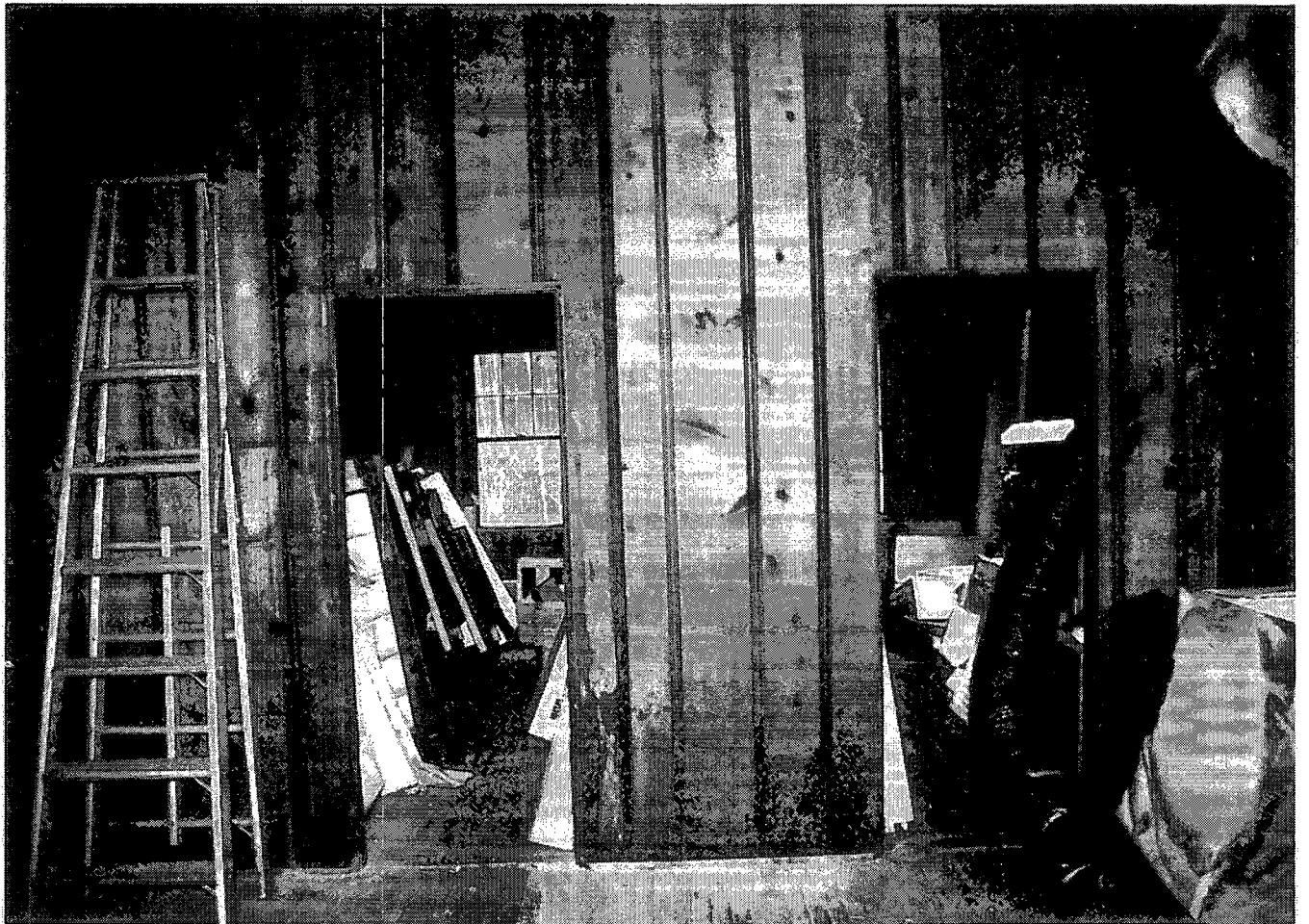
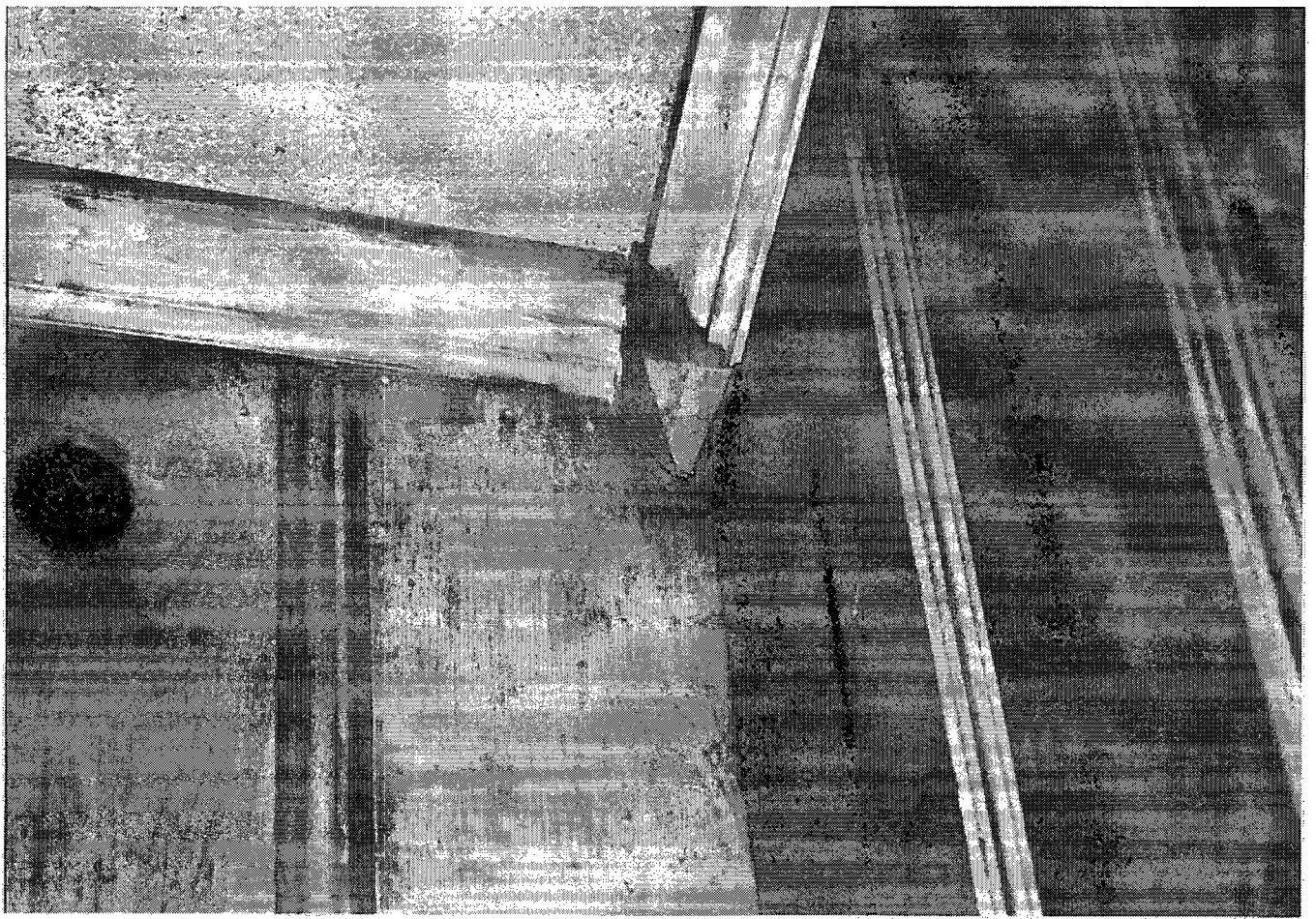
MIHP # CT-1312
GAI PROJECT # C081163

ROLL # 2
COLOR BW x
INK / PAPER True Black & White Prints /
ILFORD Express Digital B&W Silver Gelatin RC Paper

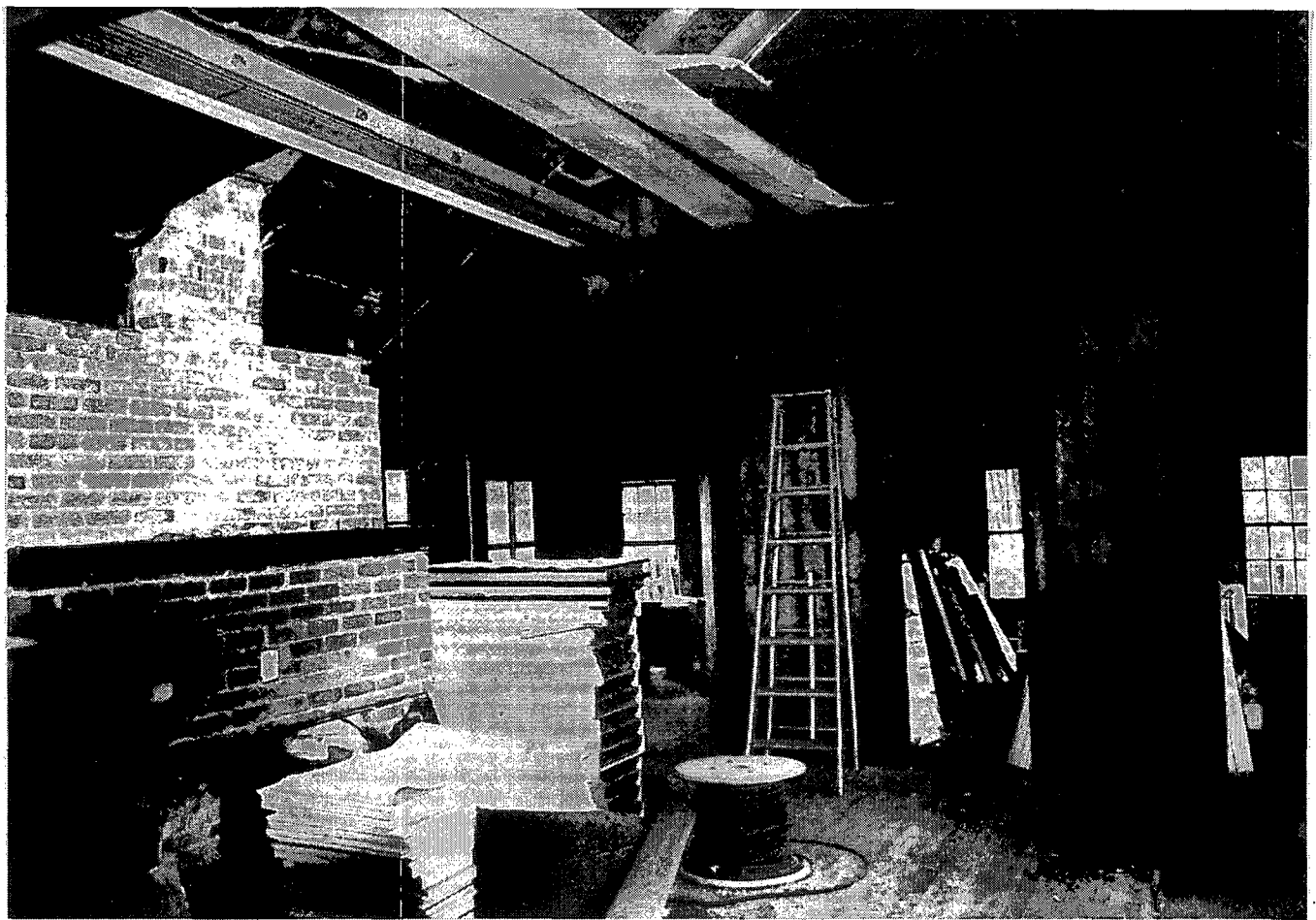
File Name	Description	Direction	Date
CT-1312 2009-08-11 12	Camp Conoy Lodge Rear Elevation	SW	8/11/09
CT-1312 2009-08-11 13	Camp Conoy Lodge Rear Elevation	SW	8/11/09
CT-1312 2009-08-11 14	Camp Conoy Lodge Façade	N	8/11/09
CT-1312 2009-08-11 15	Camp Conoy Lodge Dormer Detail	NW	8/11/09
CT-1312 2009-08-11 16	Camp Conoy Lodge Façade	NW	8/11/09
CT-1312 2009-08-11 17	Camp Conoy Lodge Façade and Northwest Elevation	E	8/11/09
CT-1312 2009-08-11 18	Camp Conoy Lodge Northwest Elevation	E	8/11/09
CT-1312 2009-08-11 19	Camp Conoy Lodge Rear and Northwest Elevation	SE	8/11/09
CT-1312 2009-08-11 20	Camp Conoy Lodge Rear and Southeast Elevation	SW	8/11/09
CT-1312 2009-08-11 21	Camp Conoy Lodge Southeast Elevation	W	8/11/09
CT-1312 2009-08-11 22	Camp Conoy Lodge Front Porch Wood Siding Detail	S	8/11/09
CT-1312 2009-08-11 23	Camp Conoy Lodge Façade	N	8/11/09
CT-1312 2009-08-11 24	Camp Conoy Lodge Interior Roof Detail	W	8/11/09
CT-1312 2009-08-11 25	Camp Conoy Lodge Rear Door	S	8/11/09
CT-1312 2009-08-11 26	Camp Conoy Lodge Rear Porch	E	8/11/09
CT-1312 2009-08-11 27	Camp Conoy Lodge Rear Porch	W	8/11/09
CT-1312 2009-08-11 28	Camp Conoy Lodge Interior Bedroom	NW	8/11/09
CT-1312 2009-08-11 29	Camp Conoy Lodge Interior Bedroom Closet	S	8/11/09
CT-1312 2009-08-11 30	Camp Conoy Lodge Interior Bedroom	E	8/11/09
CT-1312 2009-08-11 31	Camp Conoy Lodge Interior Bedroom	NW	8/11/09
CT-1312 2009-08-11 32	Camp Conoy Lodge Interior Bathroom Hallway	E	8/11/09
CT-1312 2009-08-11 33	Camp Conoy Lodge Interior Bathroom Toilet and Sink	W	8/11/09
CT-1312 2009-08-11 34	Camp Conoy Lodge Interior Bathroom Shower Stall	E	8/11/09
CT-1312 2009-08-11 35	Camp Conoy Lodge Interior Trim Detail Pendant	SW	8/11/09

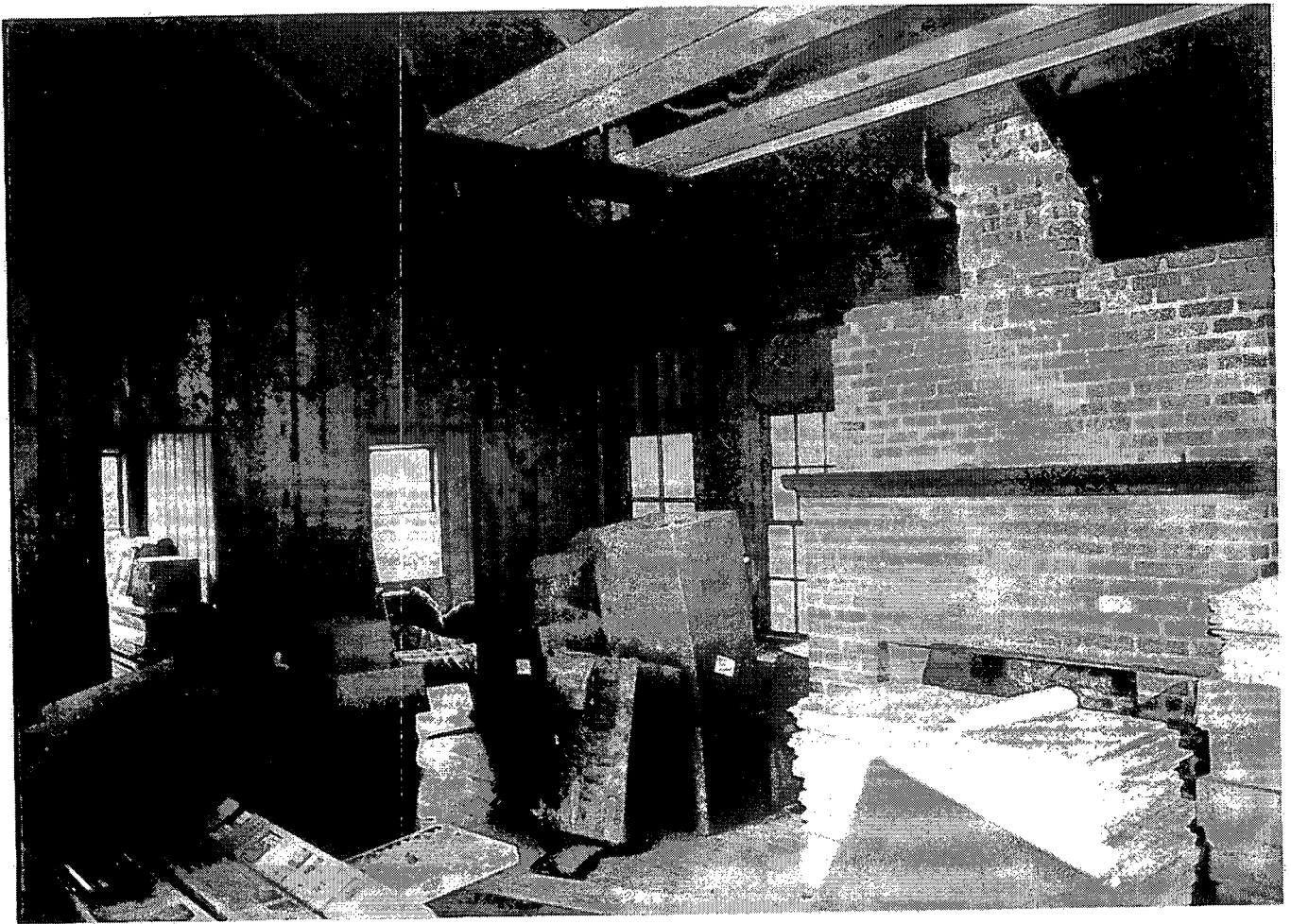
Appendix C
Archival Materials
Photographic Documentation
True Black & White Photo Prints



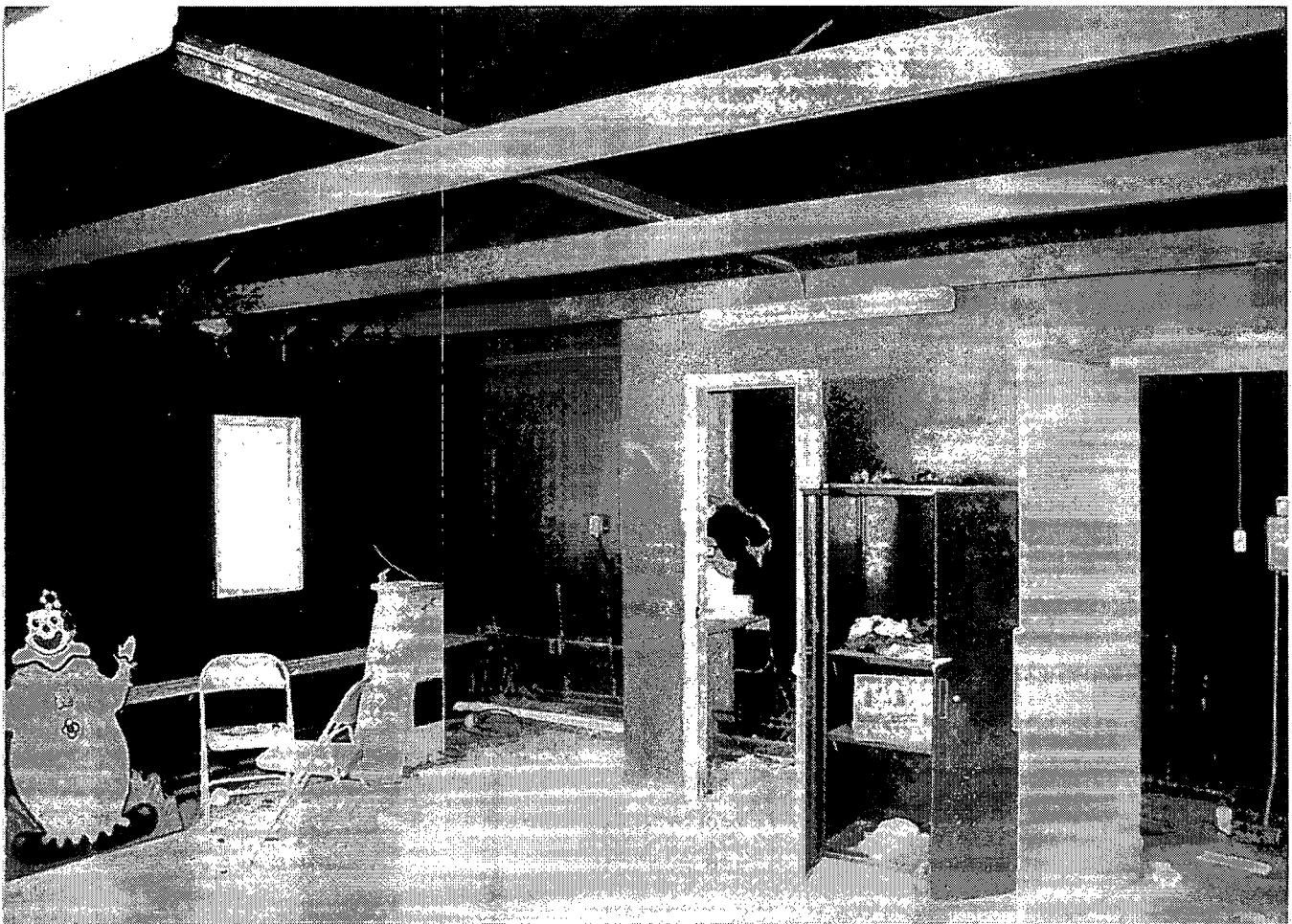


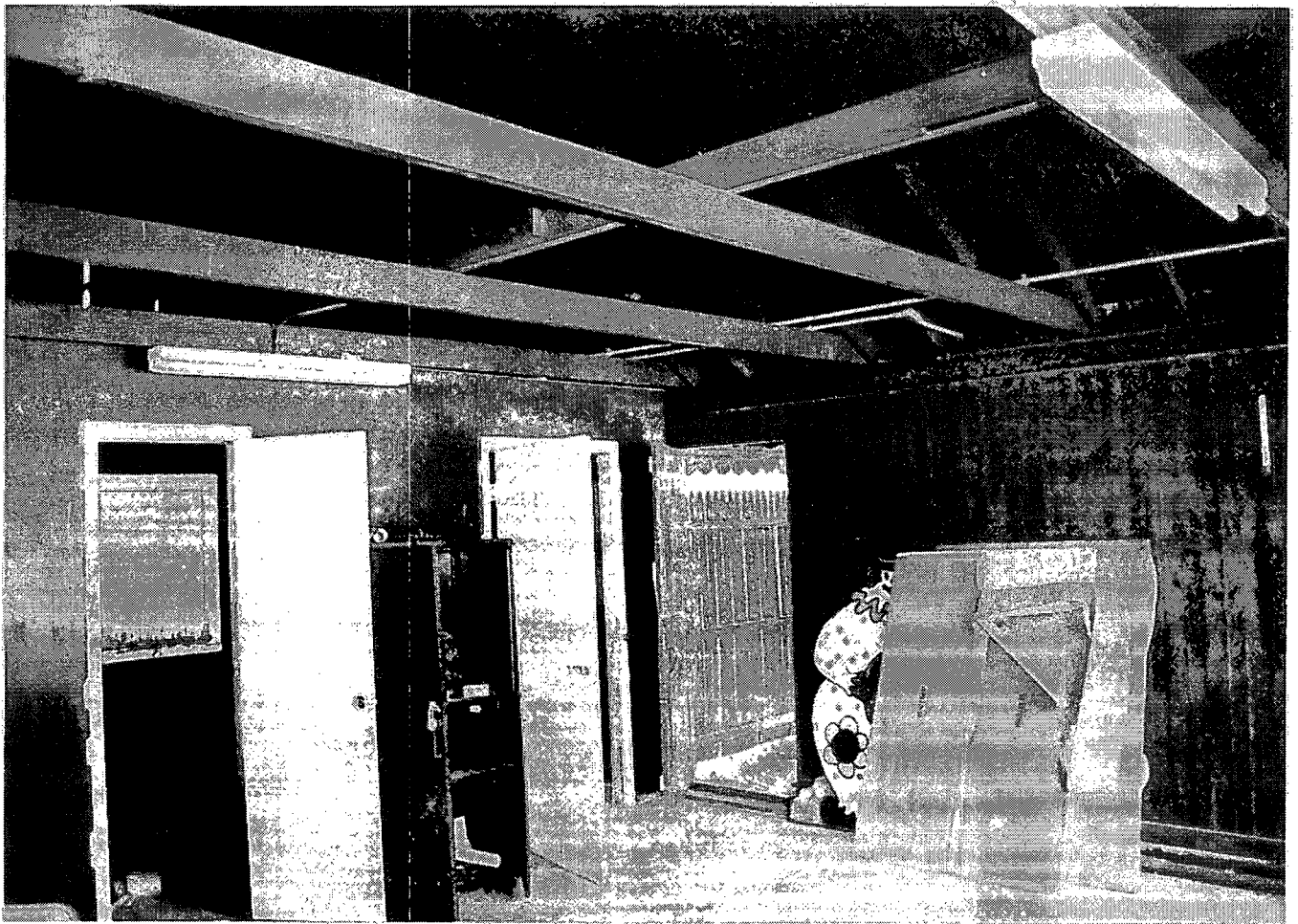


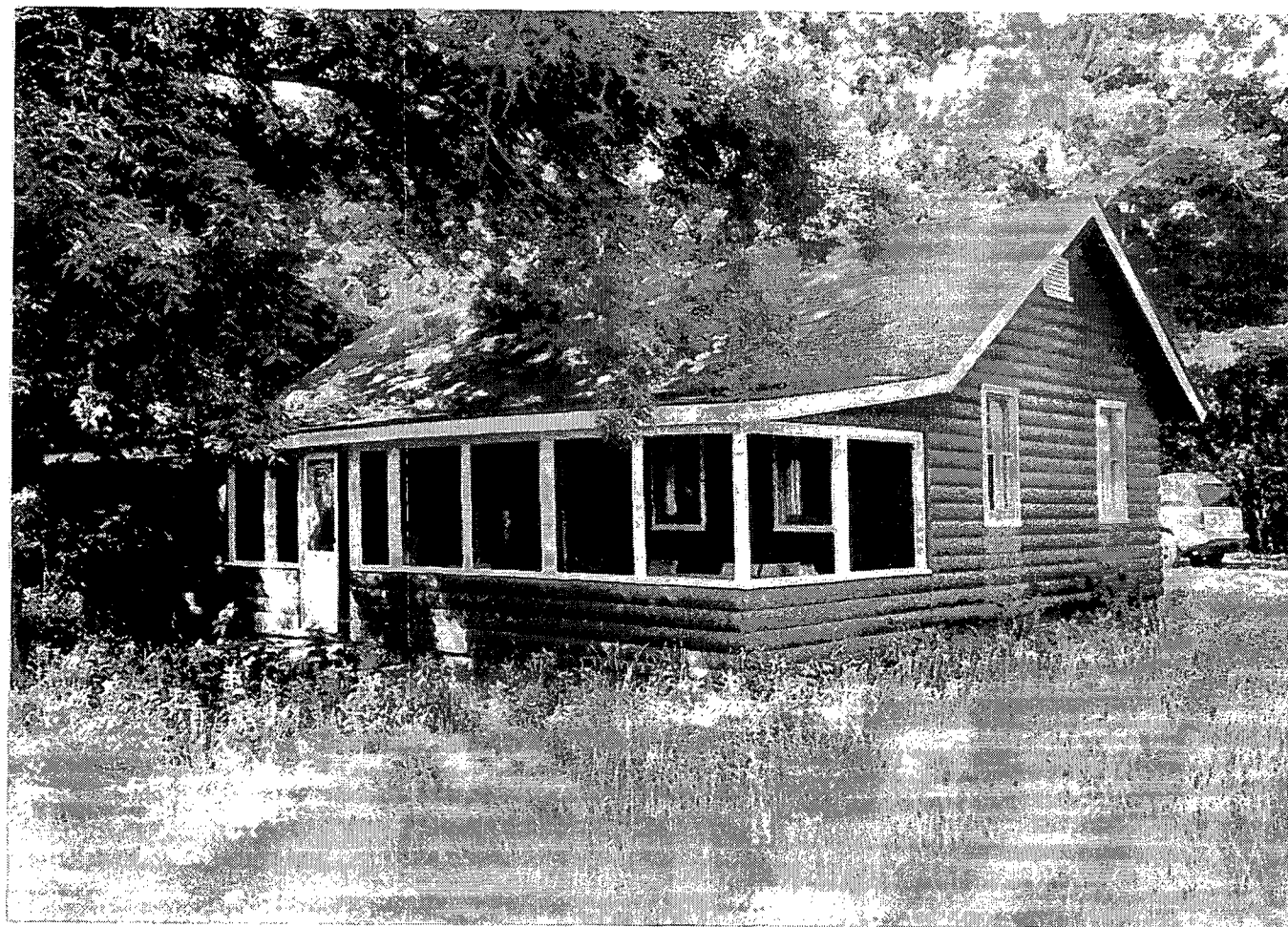


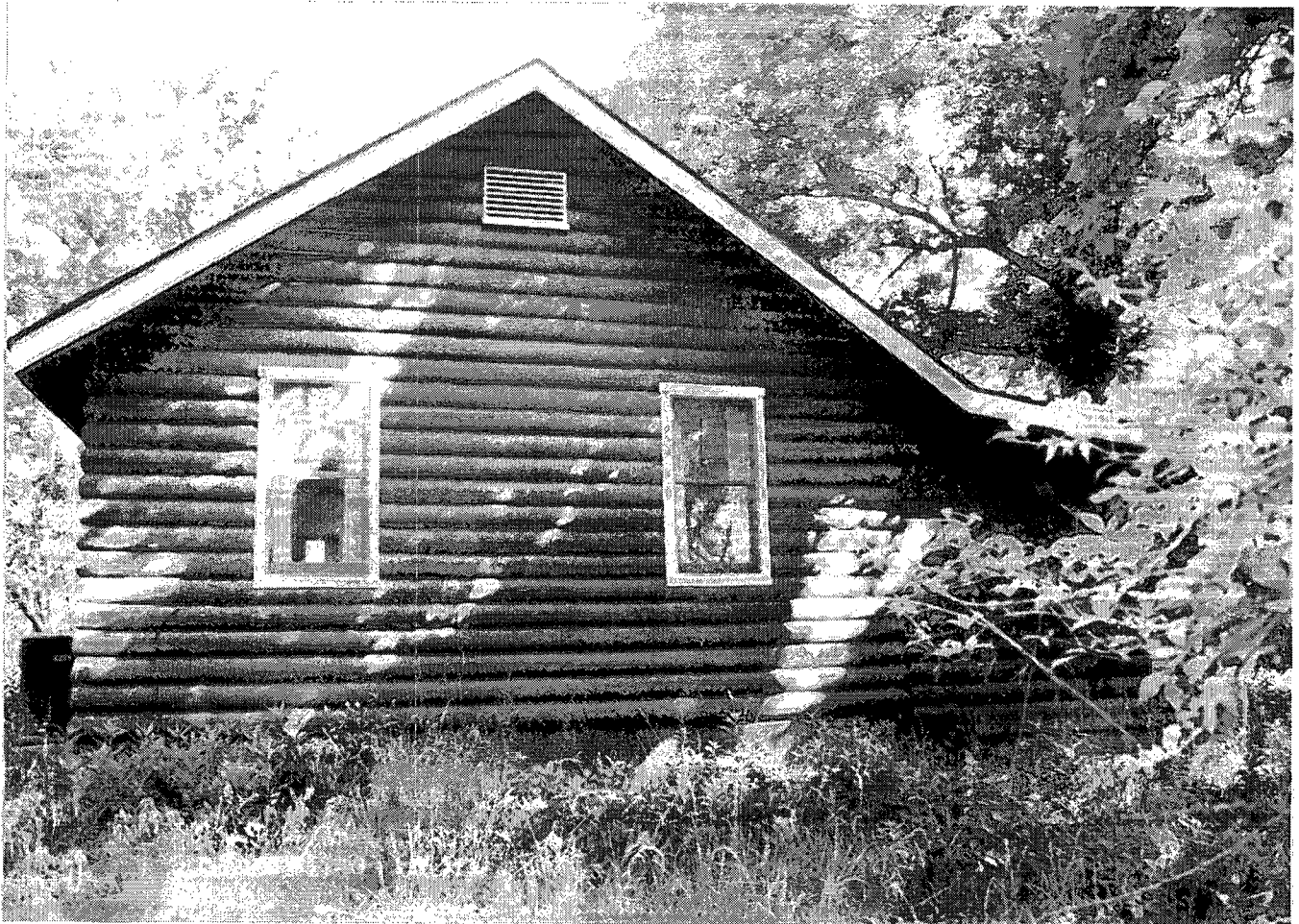


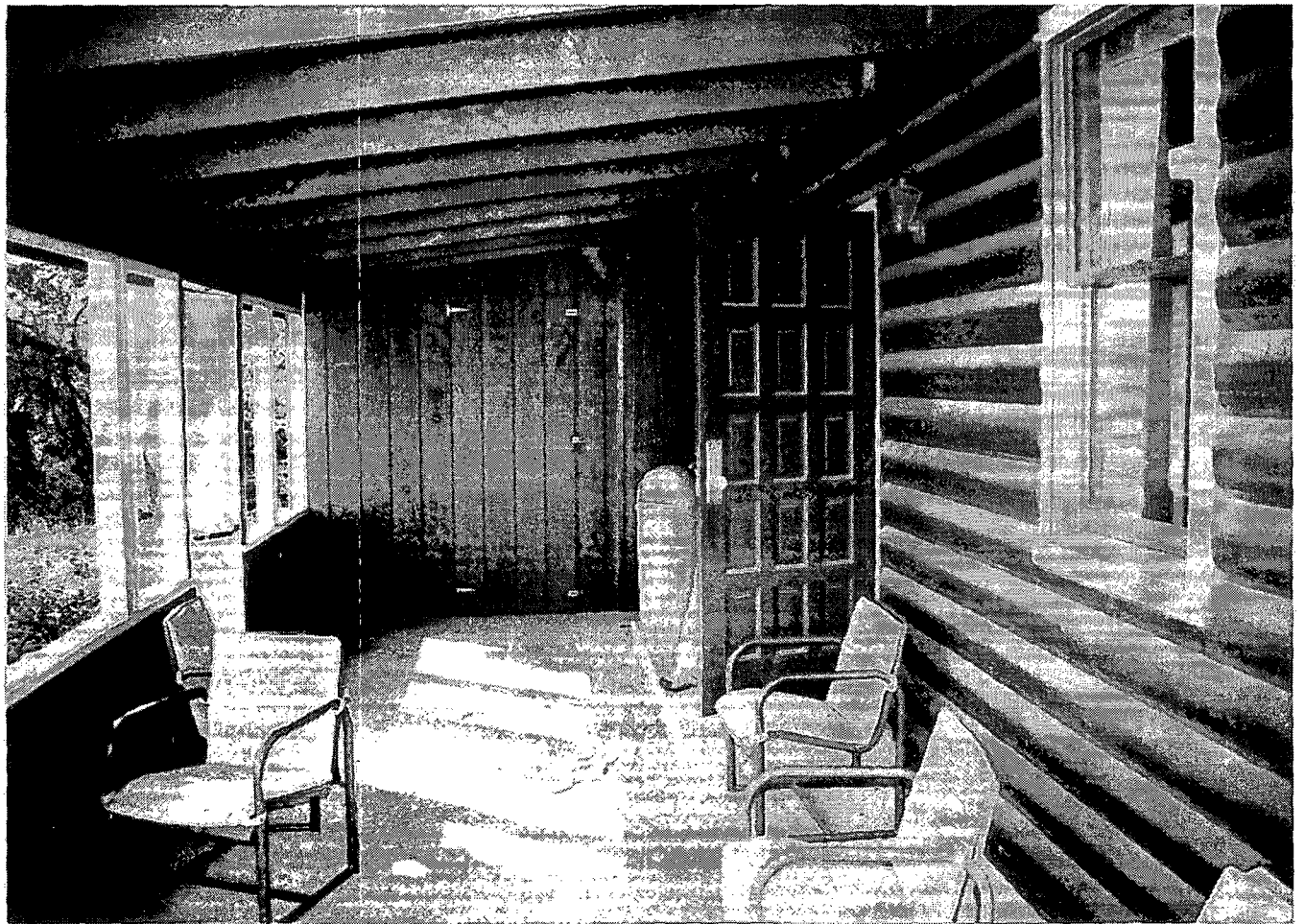


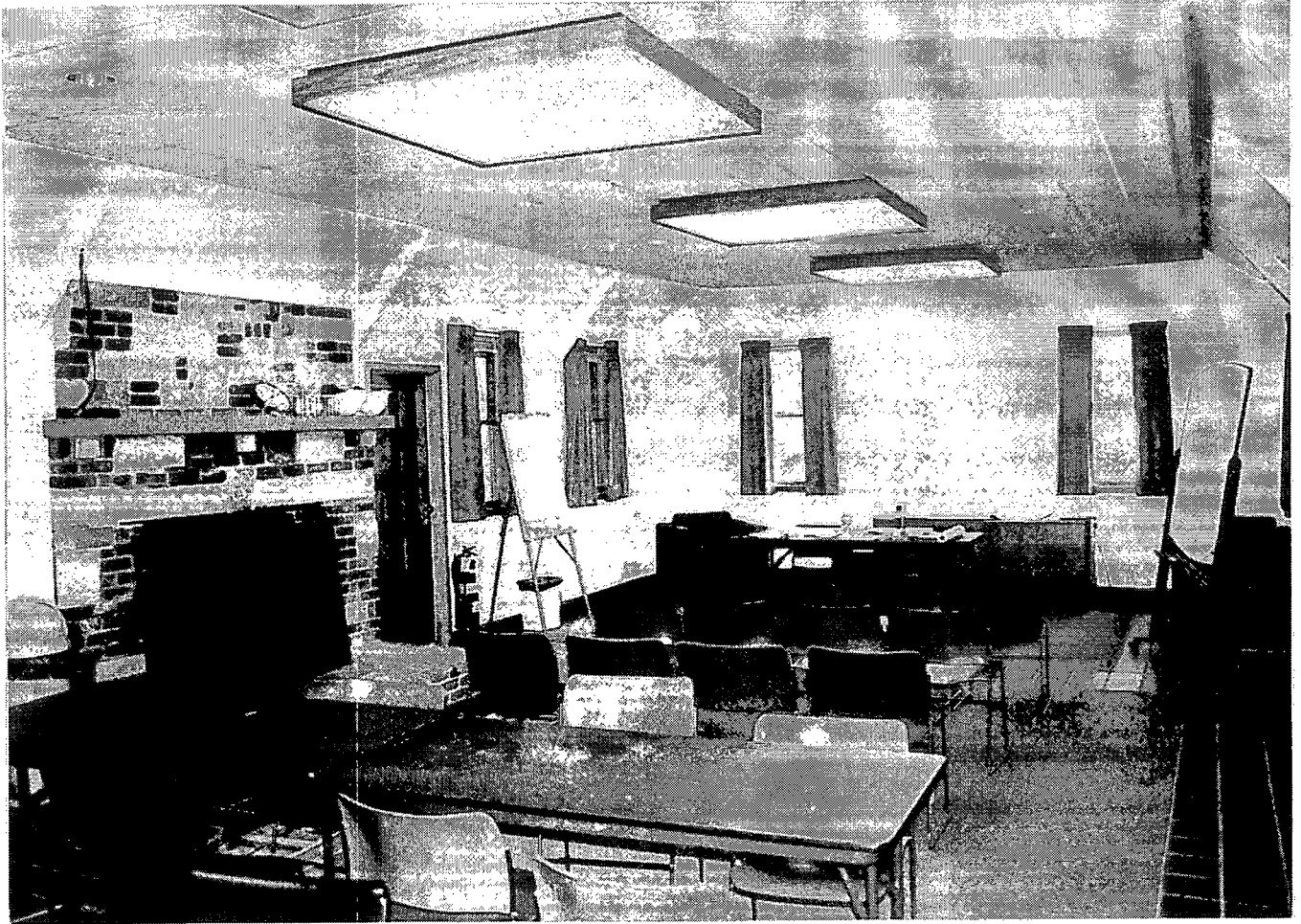




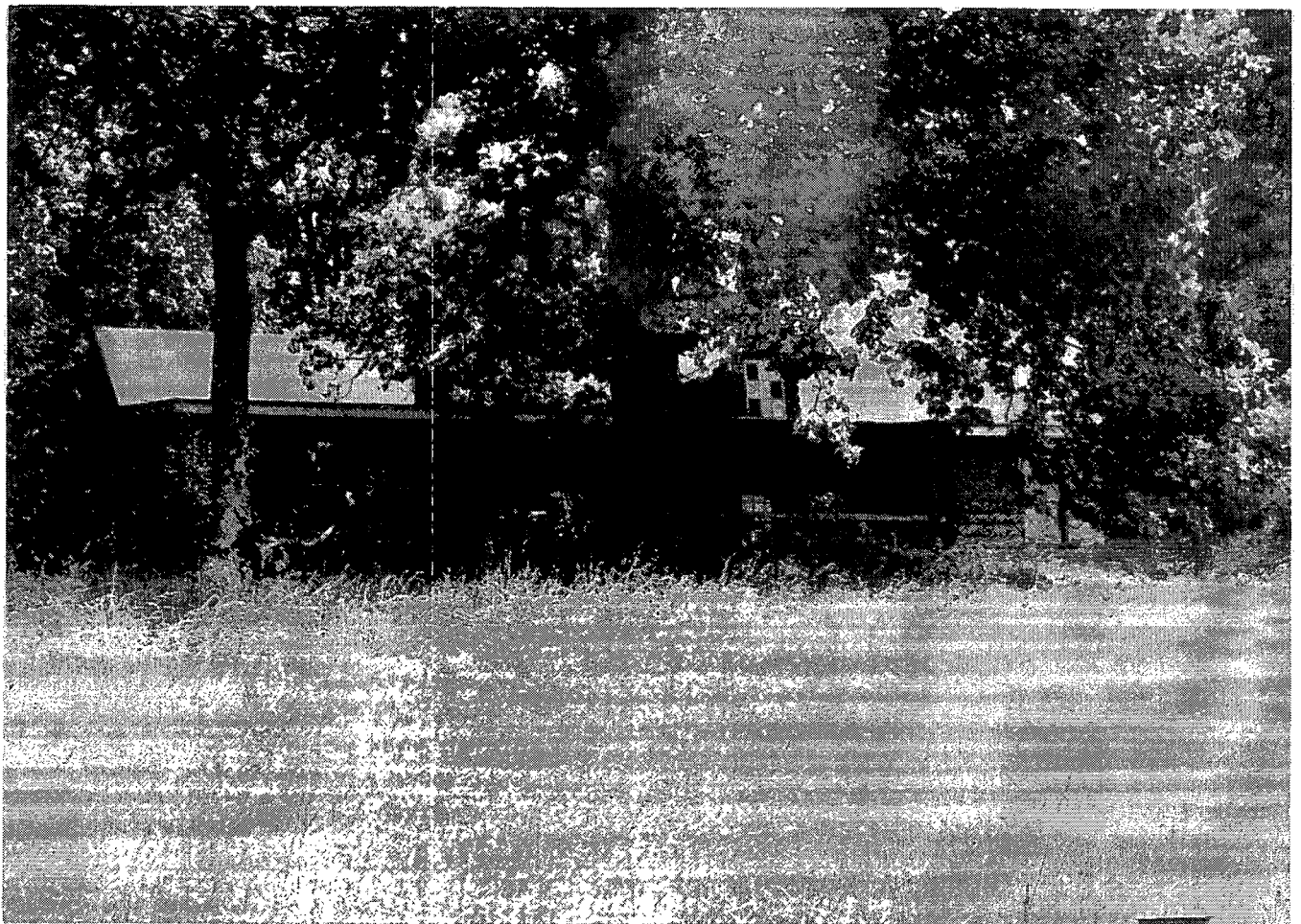
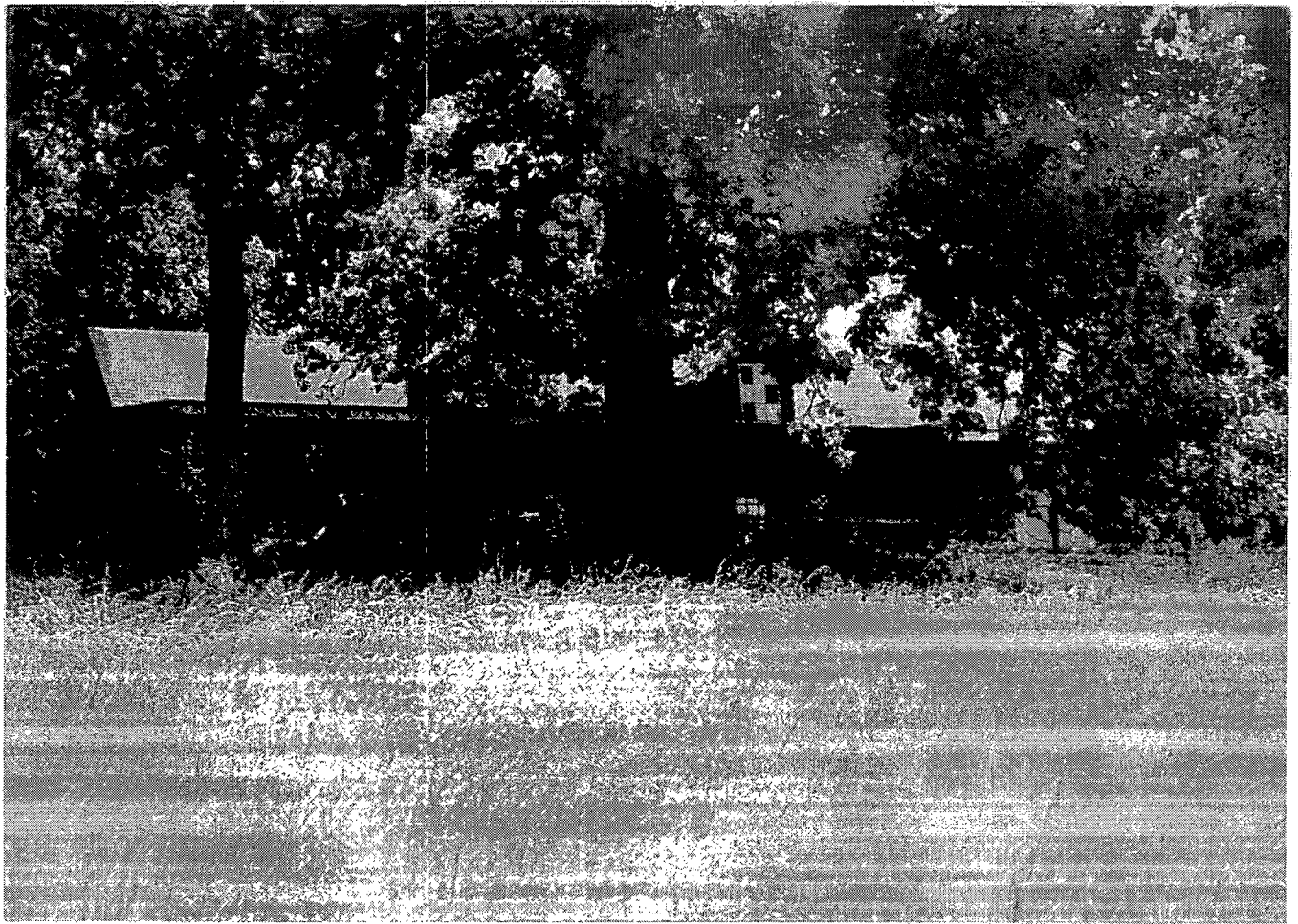


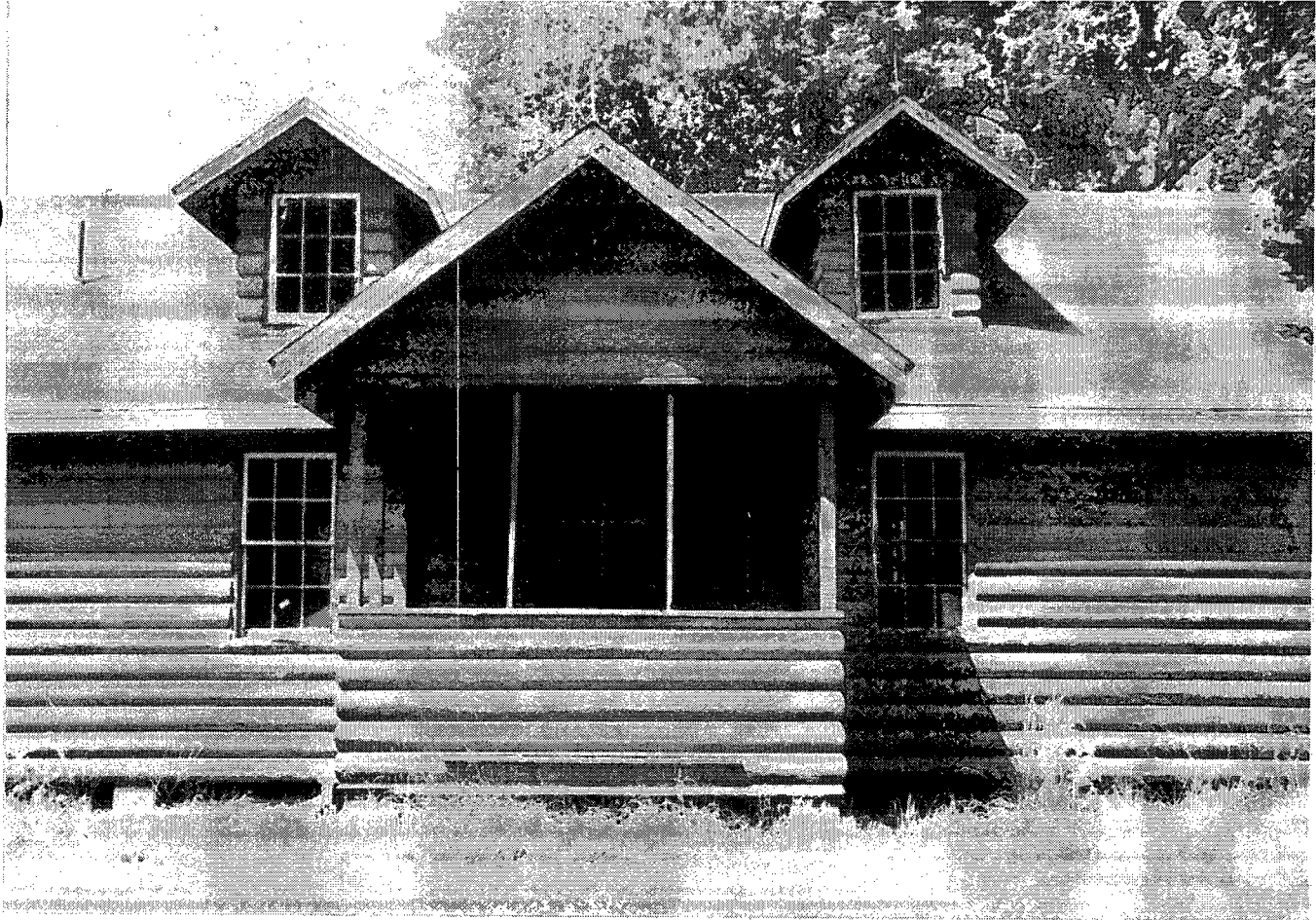




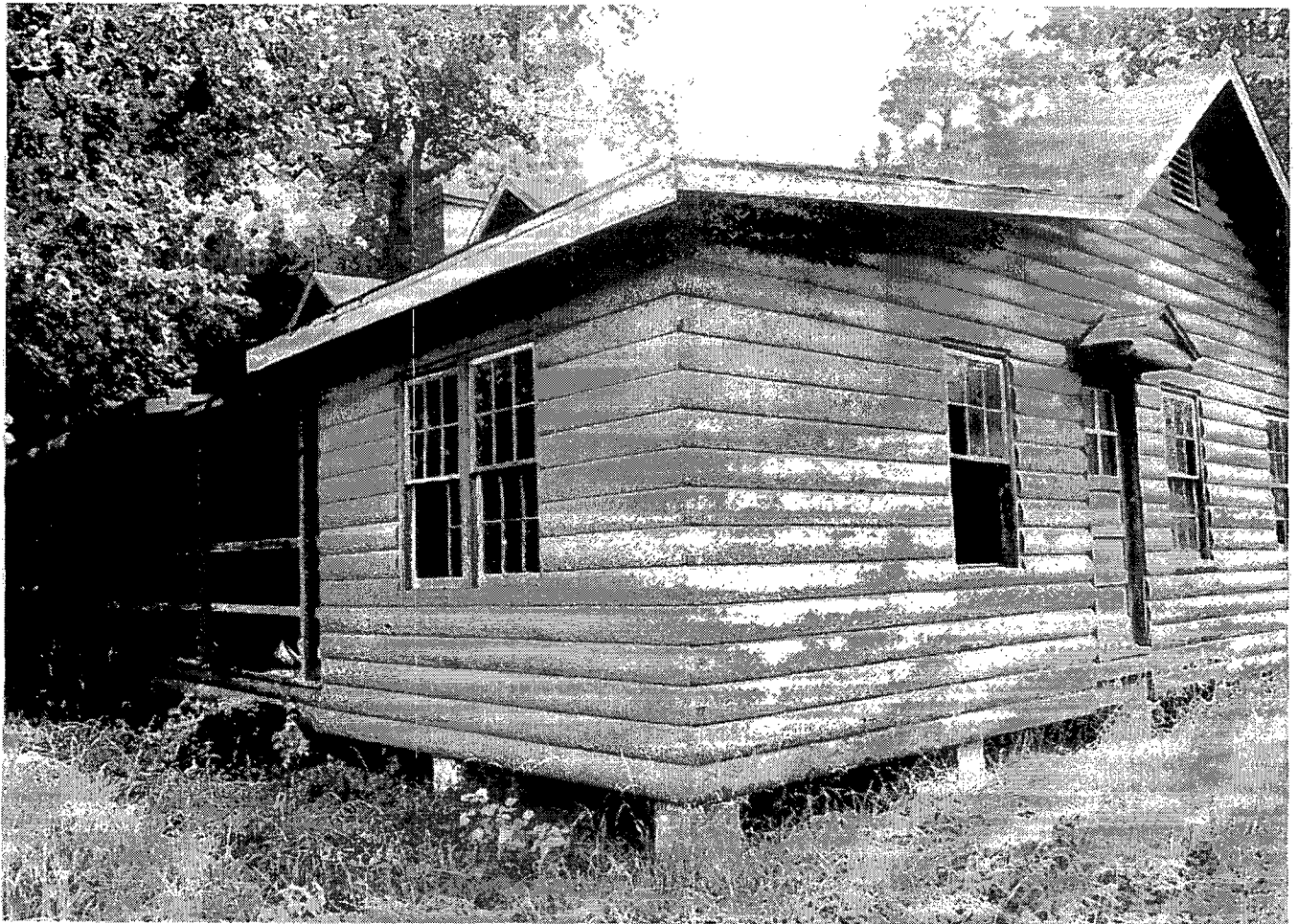




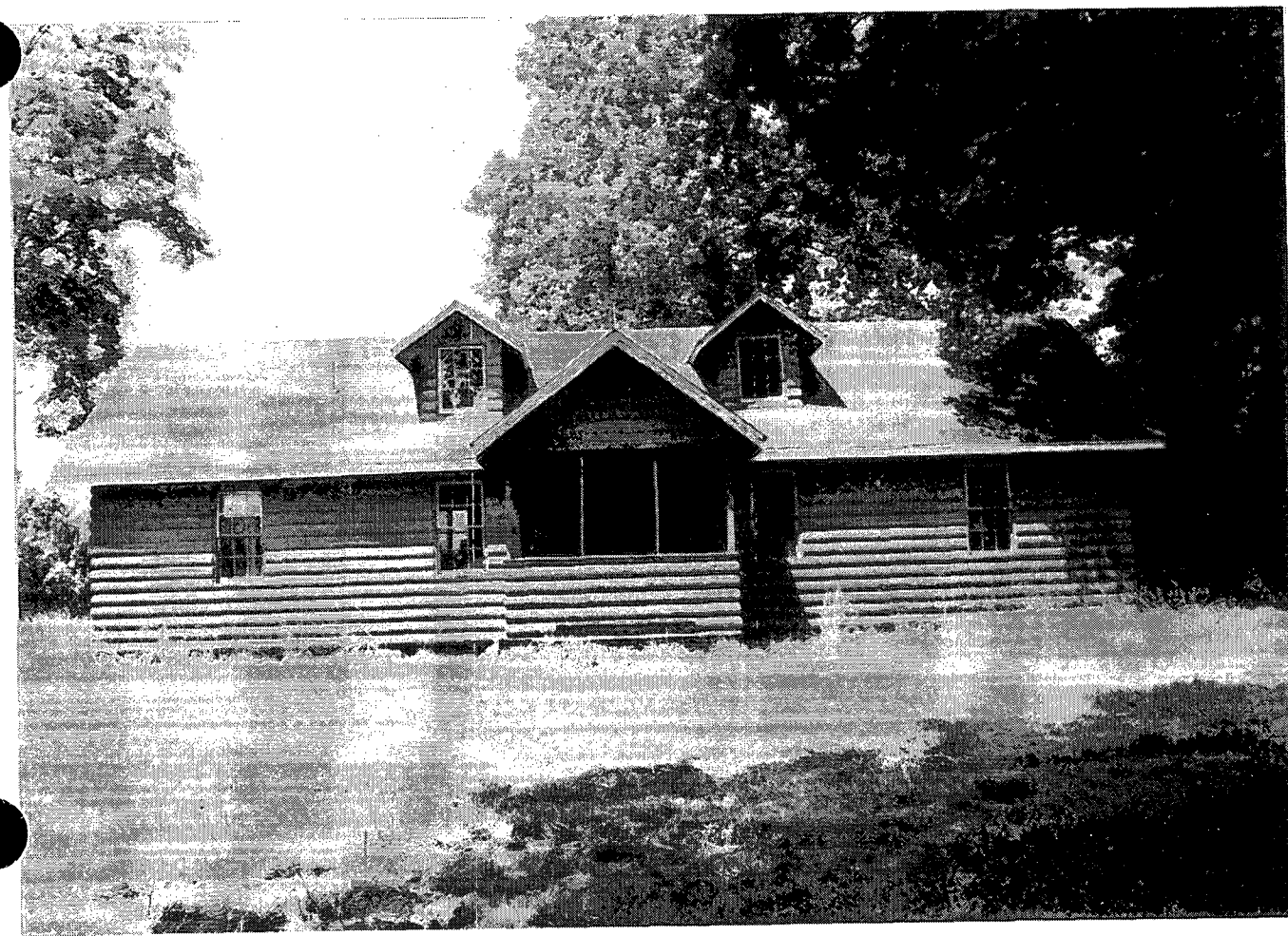
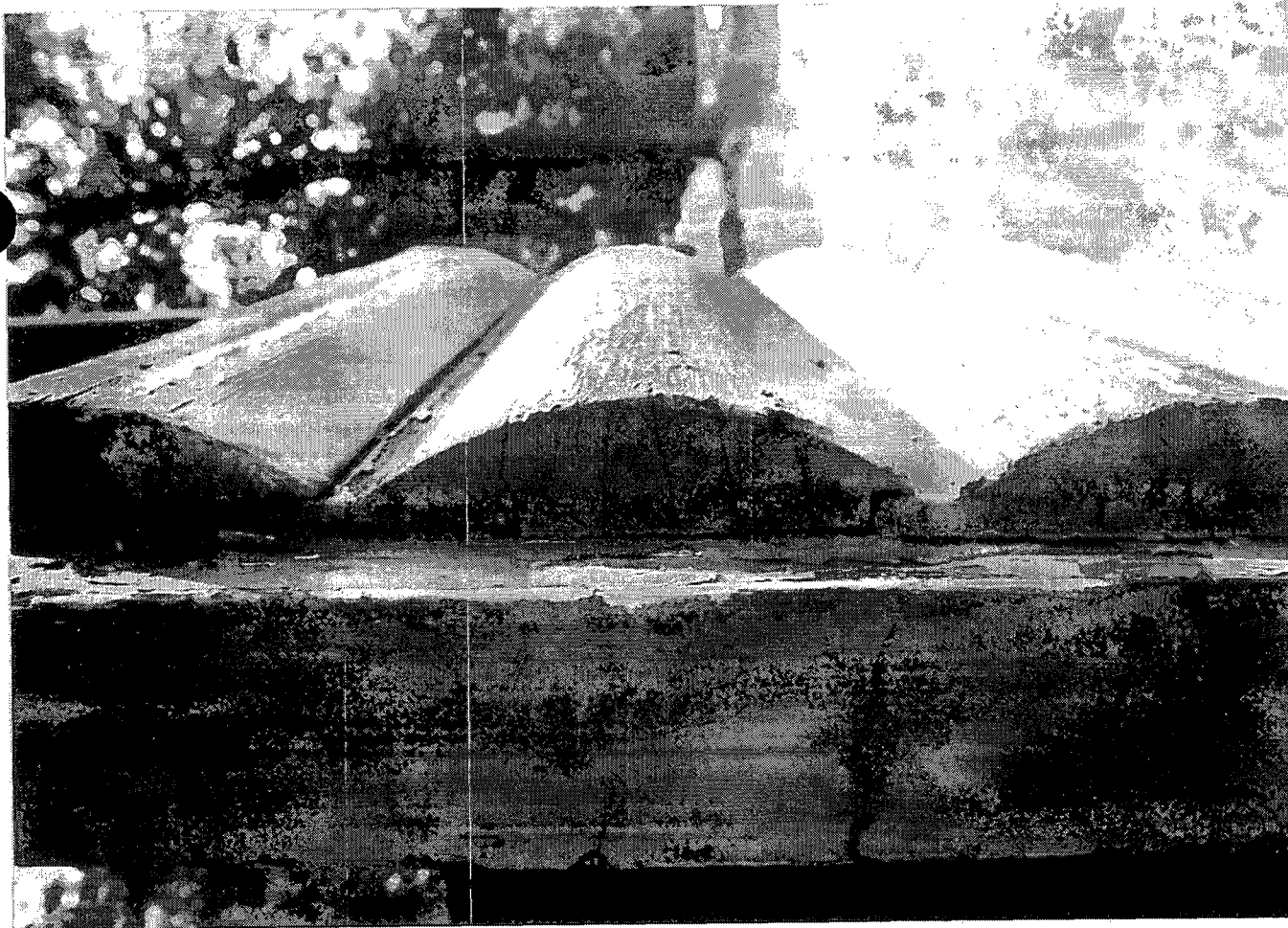




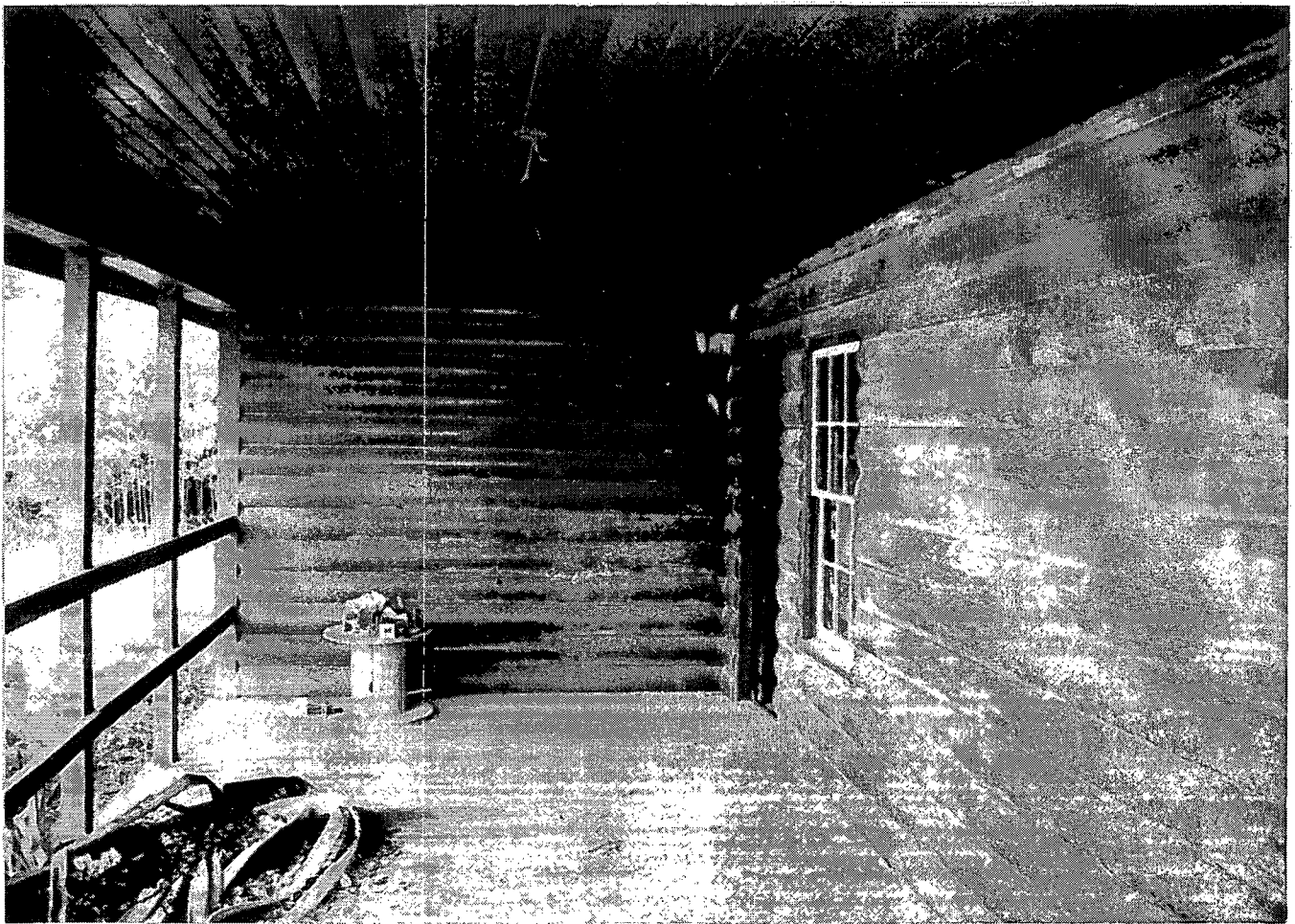


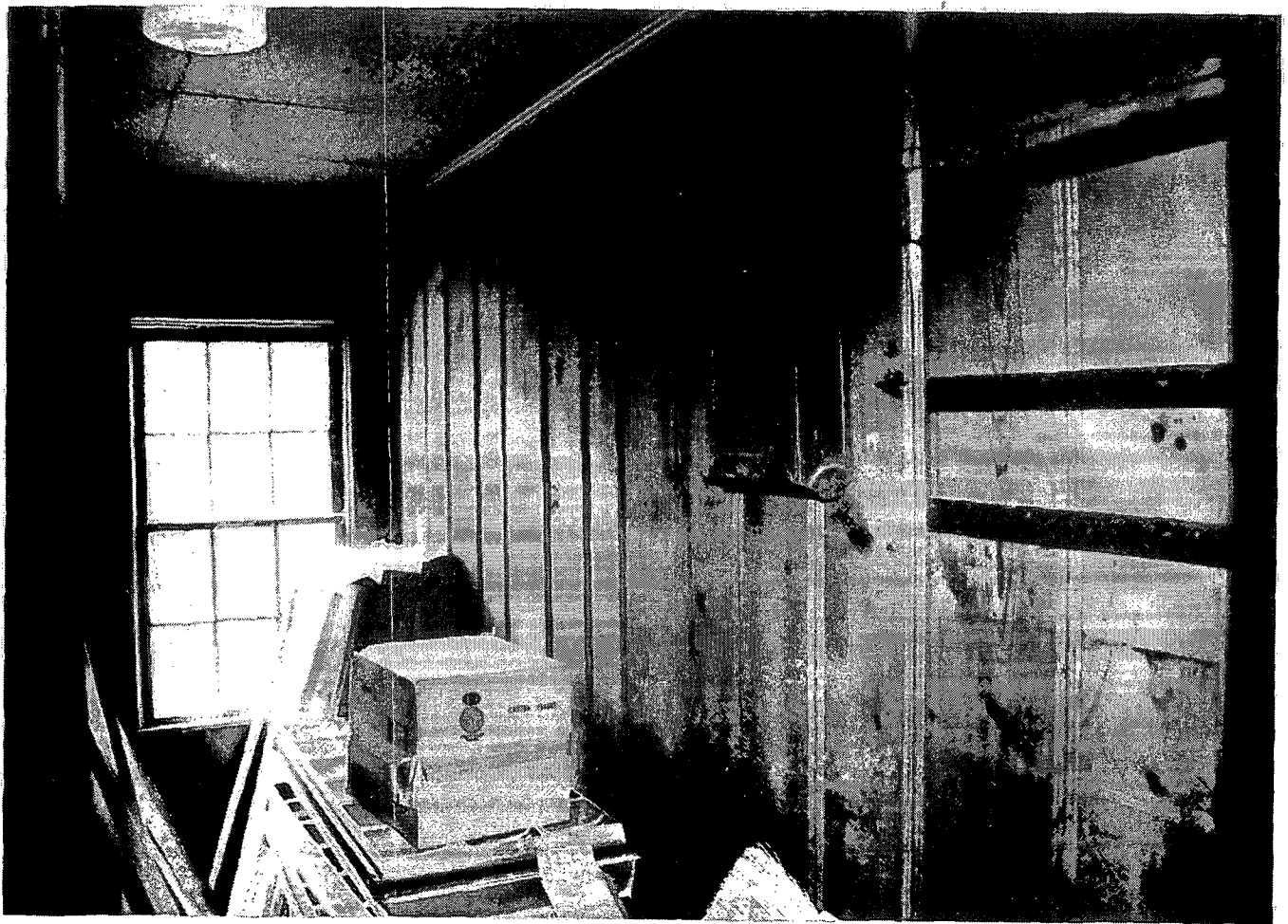




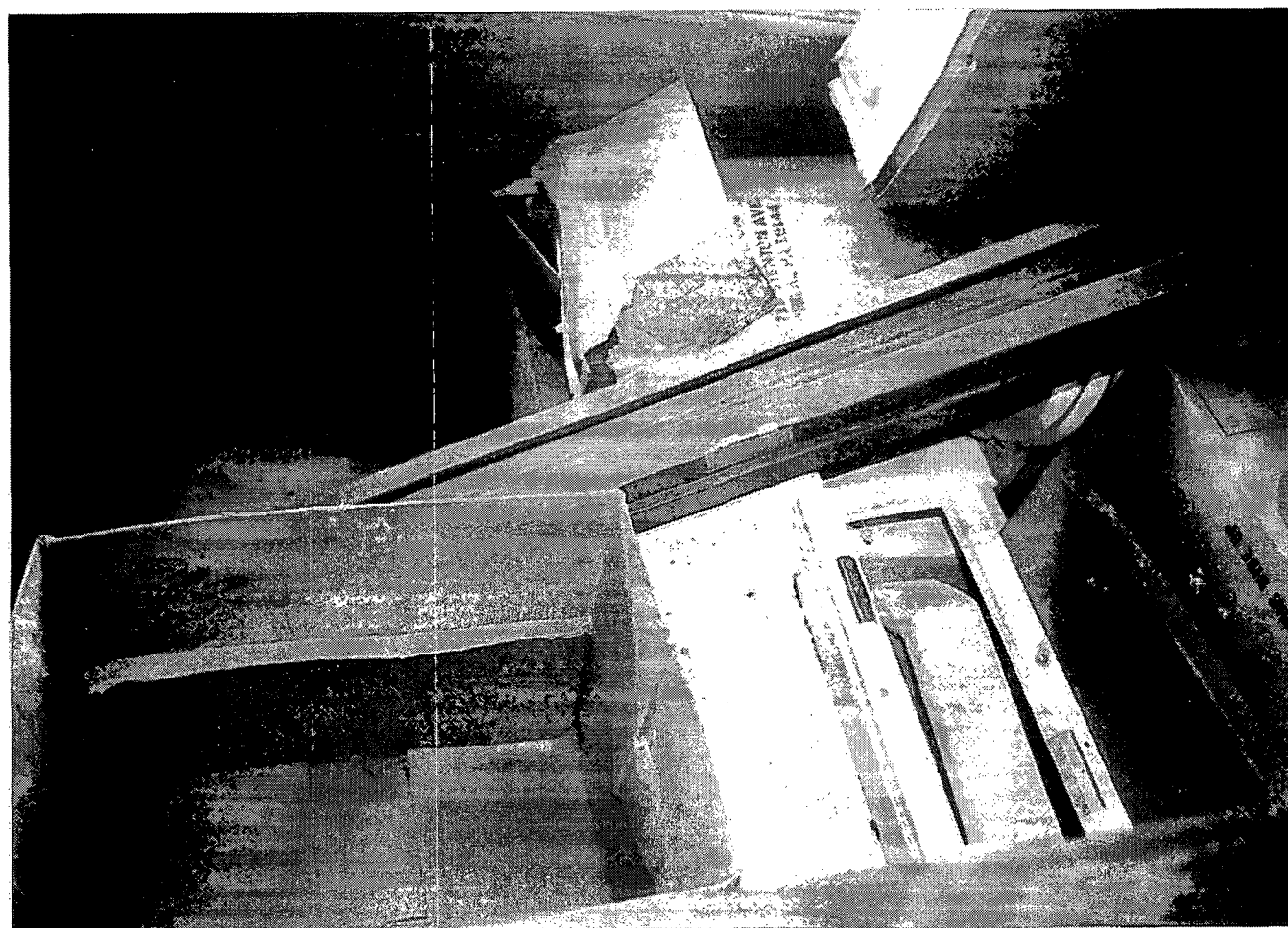


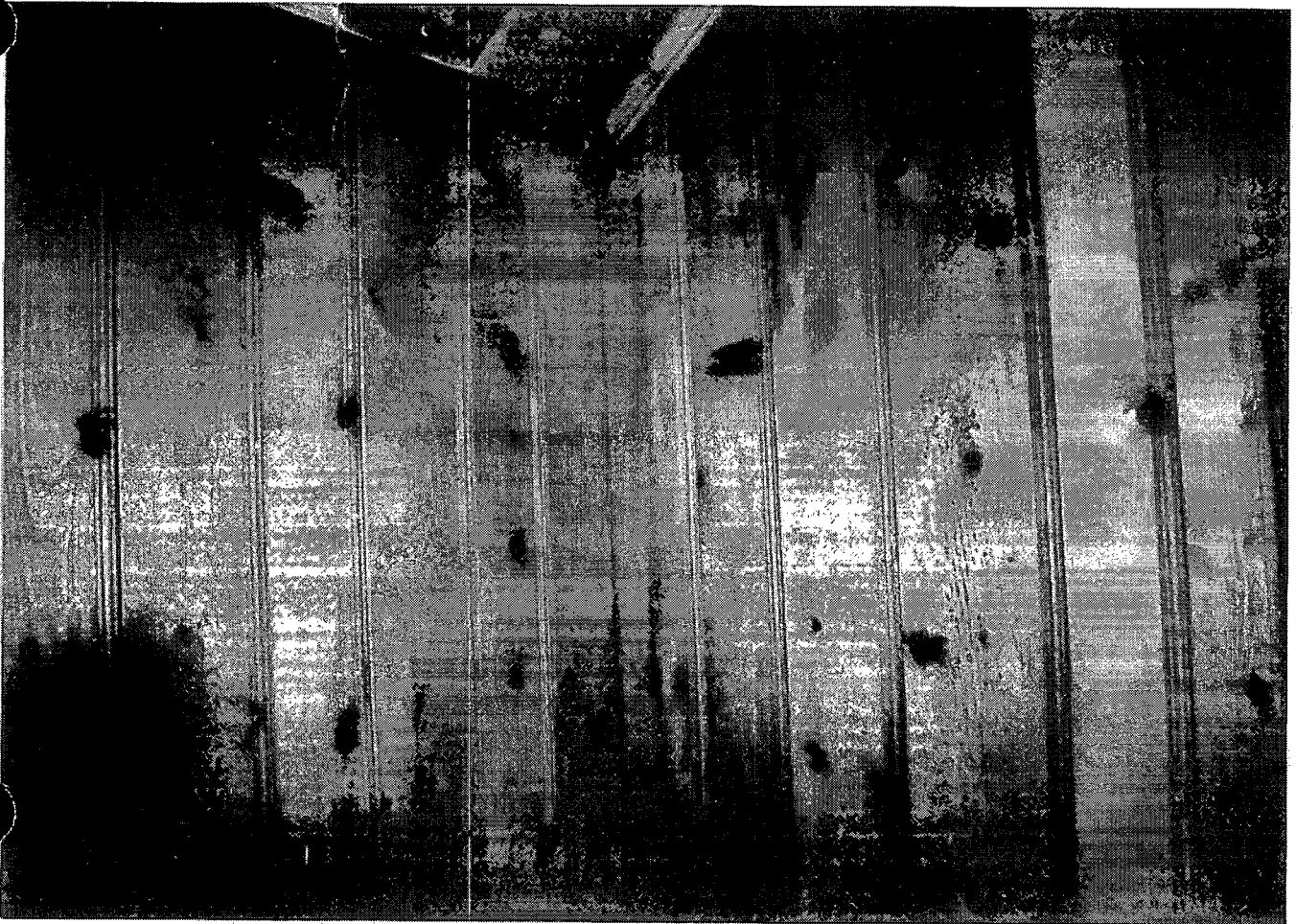
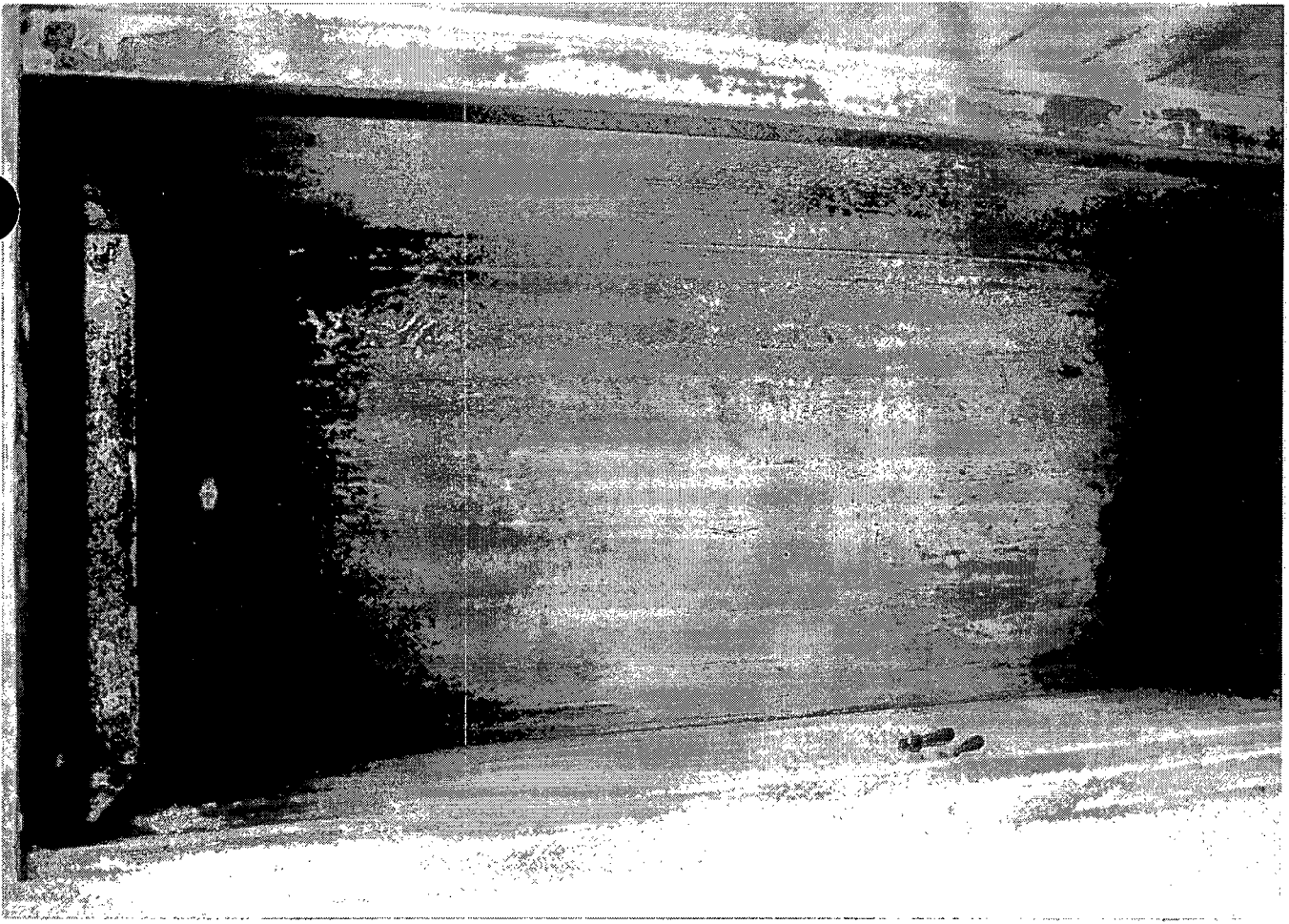












Appendix C
Archival Materials
Photographic Documentation
Digital Photographs CD

A copy of the Appendix C Archival Materials Photographic Documentation Digital Photographs CD is available in the Public Document Room at located at NRC Headquarters in Rockville, Maryland, and is open to the public from 7:45 a.m. until 4:15 p.m. EST except Federal holidays. A copy can also be requested by emailing pdr.resource@nrc.gov, by Phone at 1-301-415-4737 or 1-800-397-4209 (8am-4pm except Federal holidays) or by Facsimile at 301-415-3548

Documentation of Baltimore & Drum Point Railroad (CT-1295)

Mitigation Report Appendix D Archival Materials

(Mitigation of NRHP-Eligible Architectural and Historical Properties, Calvert Cliffs
Nuclear Power Plant, Calvert County, Maryland)



Prepared for
UniStar Nuclear Development, LLC



Prepared by
Hannah Cole, M.A.
Architectural Historian



GAI Project No. C081163.50
January 2010

Appendix D

Archival Materials

- 1. Topographical Survey Data Collection—Index Maps**
(Figures Appendix A1 - A2)
- 2. Topographical Survey Data Collection—Cross-Sections and Plan Views**
(Figures Appendix B1 - B6)
- 3. Topographical Survey Data Collection—3-D Renderings**
(Includes CD with video files)
- 4. Photo Documentation—Photo Log**
- 5. Photo Documentation—True Black-and-White Photo Prints**
- 6. Photo Documentation—Negatives**
- 7. Photo Documentation—Digital Photographs CD**

Appendix D
Archival Materials
Topographical Survey Data Collection
Index Maps

**THIS PAGE IS AN
OVERSIZED DRAWING OR
FIGURE,
THAT CAN BE VIEWED
AT THE RECORD TITLED:**

**“APPENDIX A-1
TOPOGRAPHICAL SURVEY DATA
COLLECTION SEGMENTS
A, B AND C”**

**WITHIN THIS PACKAGE...OR
BY SEARCHING USING THE
DOCUMENT/REPORT NO.**

D-01

**THIS PAGE IS AN
OVERSIZED DRAWING OR
FIGURE,
THAT CAN BE VIEWED AT THE
RECORD TITLED:**

**“APPENDIX A-2
TOPOGRAPHICAL SURVEY DATA
COLLECTION SEGMENTS
D, E AND F”**

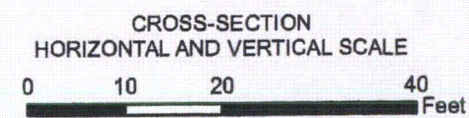
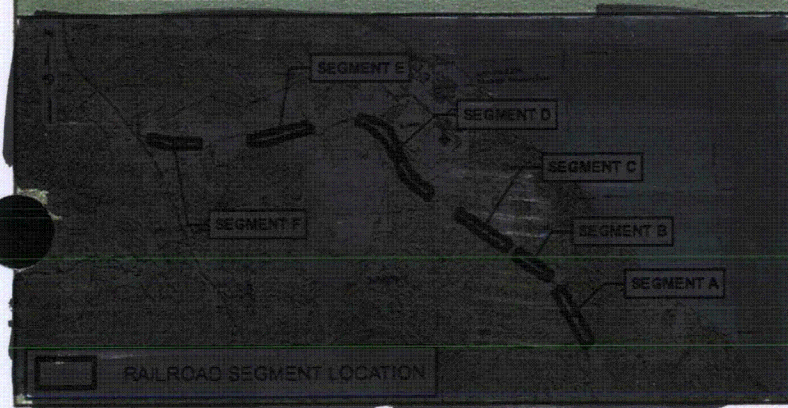
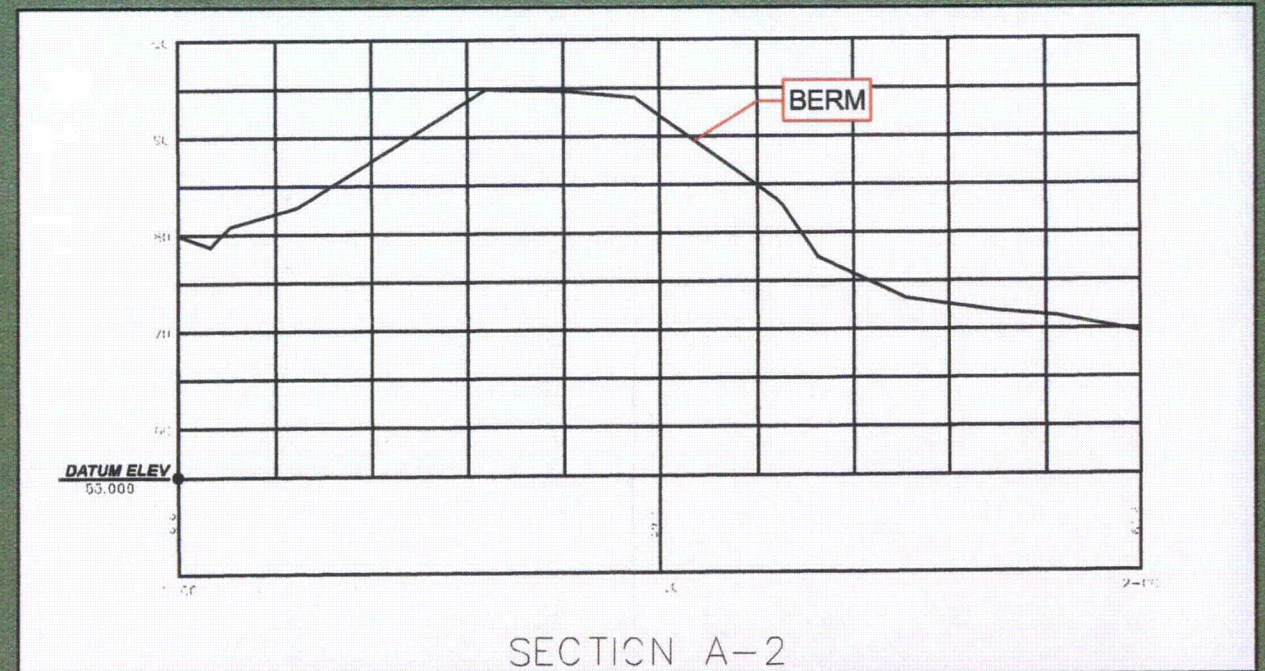
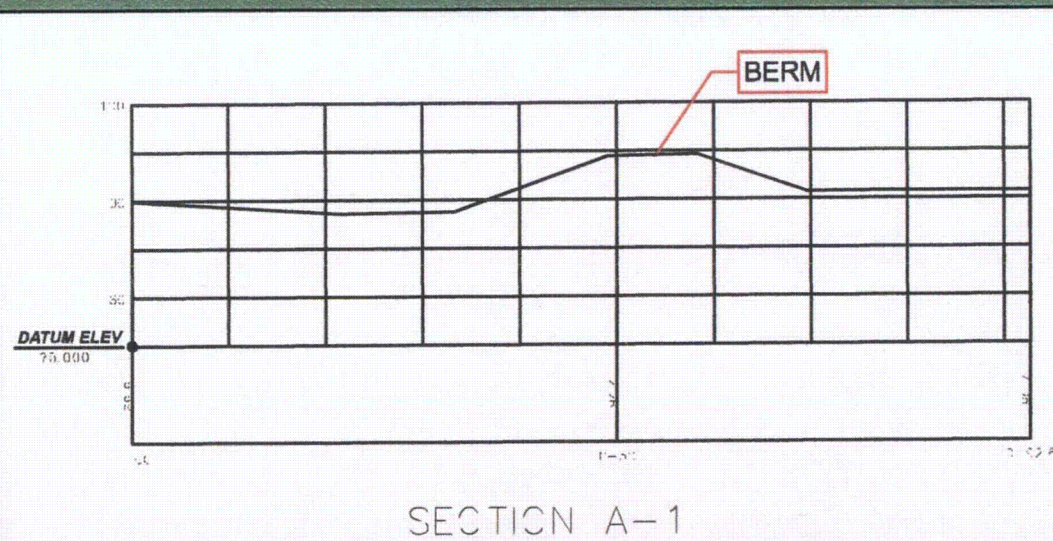
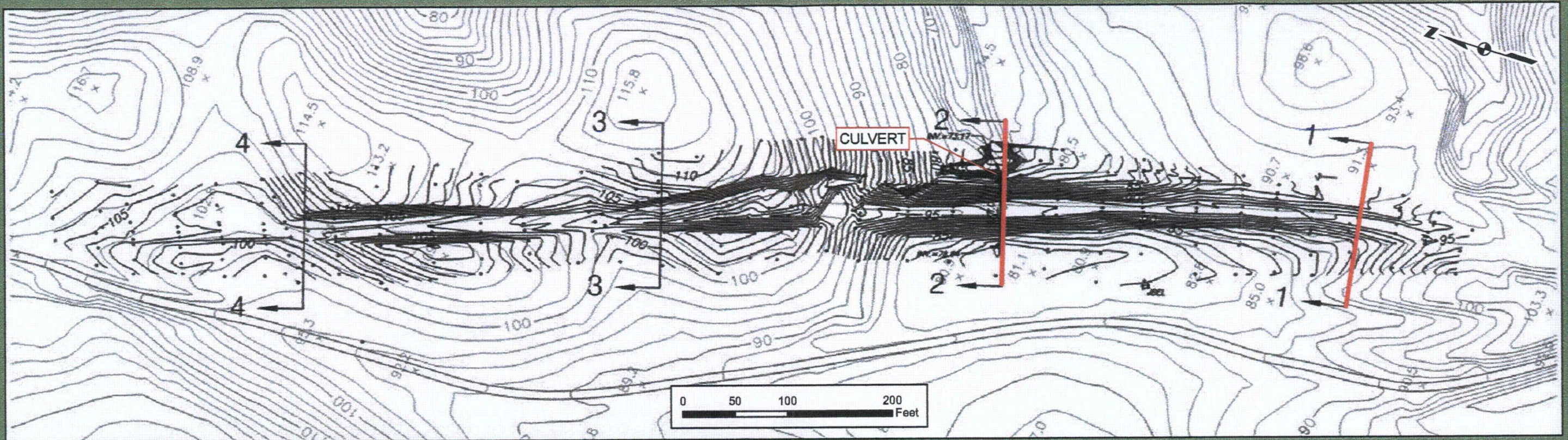
**WITHIN THIS PACKAGE...OR
BY SEARCHING USING THE
DOCUMENT/REPORT NO.**

D-02X

Appendix D
Archival Materials
Topographical Survey Data Collection
Cross-Sections and Plan Views

All Appendix B Corner Segment Location Maps are withheld per section 34 of the National Historic Preservation Act and Title 36 of the Code of Federal Regulations Part 800.11(c)

SEGMENT A



APPENDIX B-1a
SEGMENT A PLAN VIEW AND CROSS-SECTIONS
SECTIONS A-1 AND A-2

**CALVERT CLIFFS 3 NUCLEAR PROJECT (CC3)
BALTIMORE AND DRUM POINT RAILROAD (BDPRR)
DOCUMENTATION**

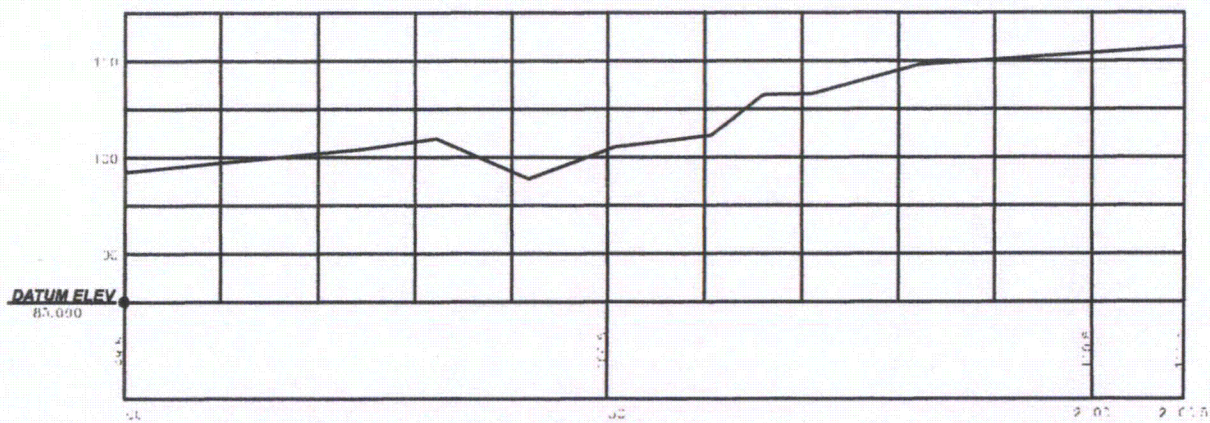
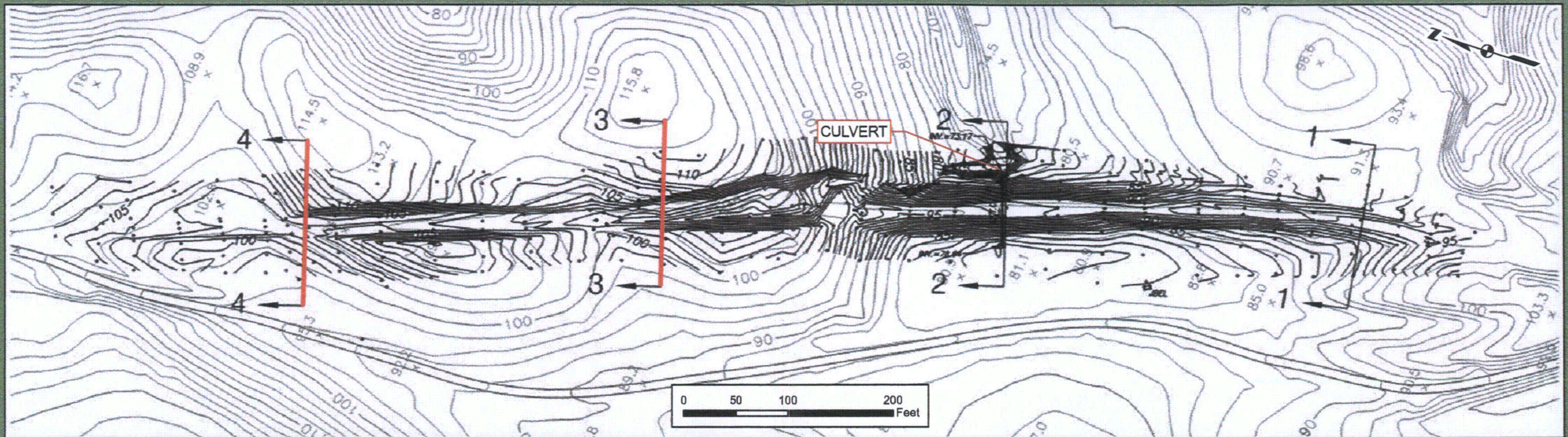
BY: DJP

DATE: 12/16/2009

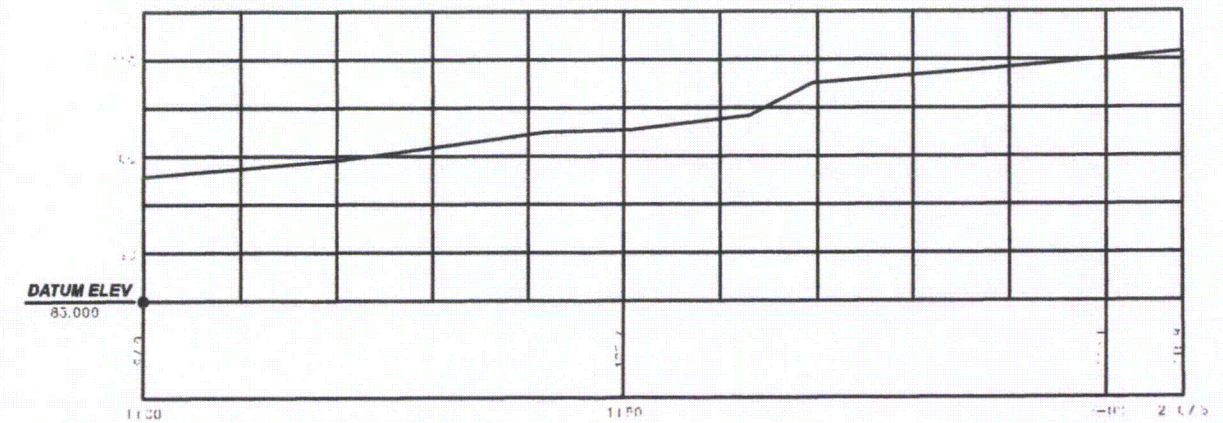
CHECKED: HLC

APPROVED: JNT

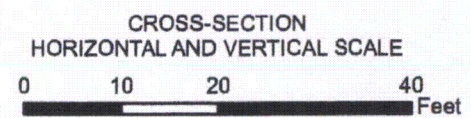
SEGMENT A



SECTION A-3



SECTION A-4



APPENDIX B-1b
SEGMENT A PLAN VIEW AND CROSS-SECTIONS
SECTIONS A-3 AND A-4

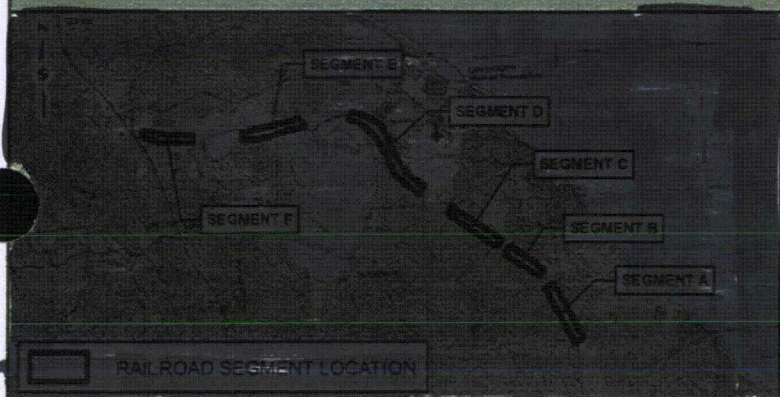
**CALVERT CLIFFS 3 NUCLEAR PROJECT (CC3)
BALTIMORE AND DRUM POINT RAILROAD (BDPRR)
DOCUMENTATION**

BY: DJP

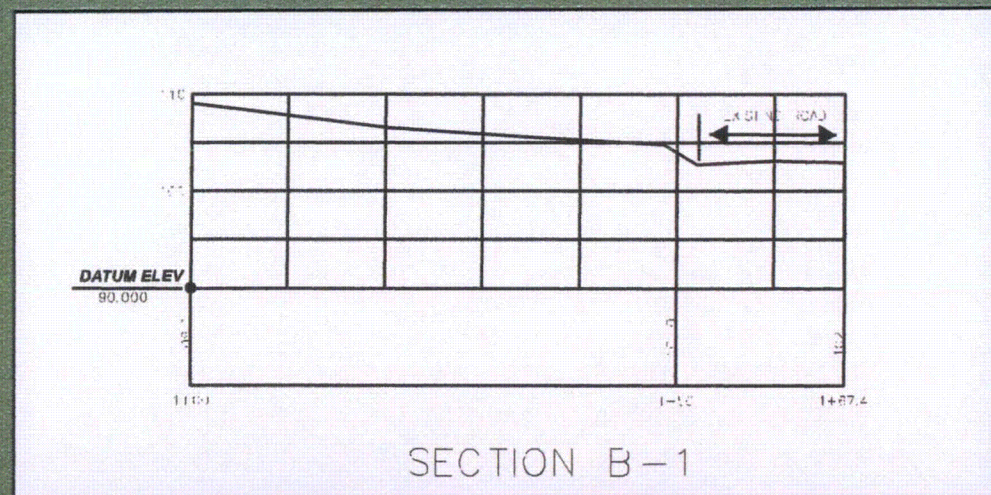
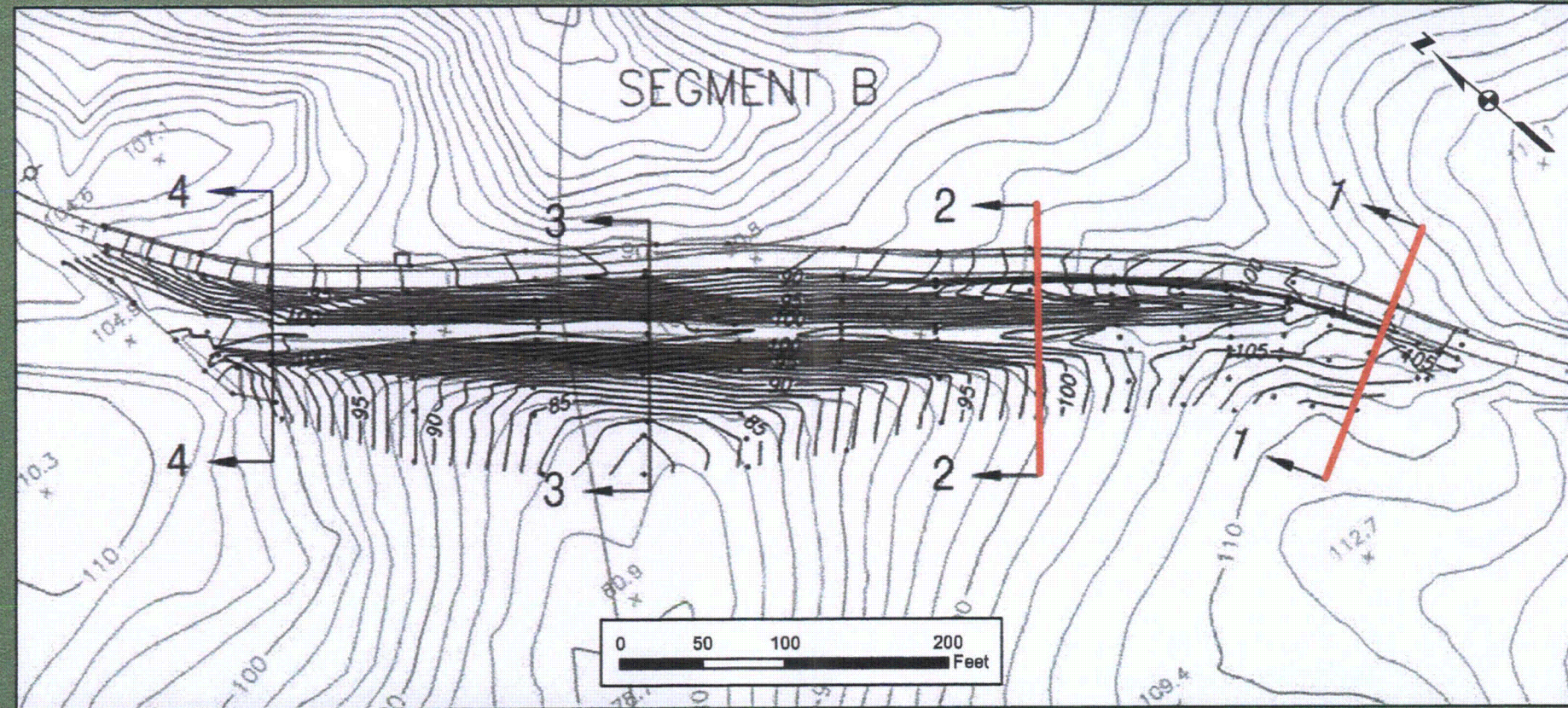
DATE: 12/16/2009

CHECKED: HLC

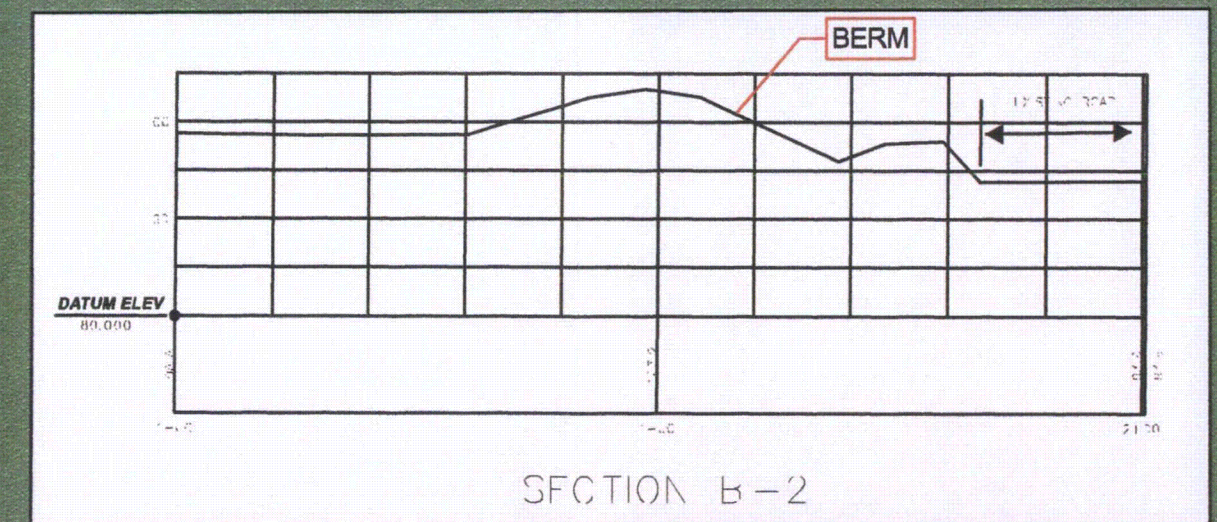
APPROVED: JNT



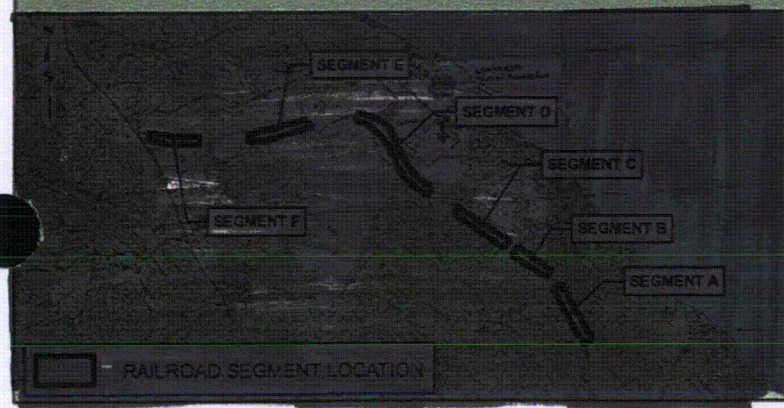
SEGMENT B



SECTION B-1



SECTION B-2



CROSS-SECTION
HORIZONTAL AND VERTICAL SCALE
0 10 20 40
Feet

APPENDIX B-2a SEGMENT A PLAN VIEW AND CROSS-SECTIONS SECTIONS B-1 AND B-2

**CALVERT CLIFFS 3 NUCLEAR PROJECT (CC3)
BALTIMORE AND DRUM POINT RAILROAD (BDPRR)
DOCUMENTATION**

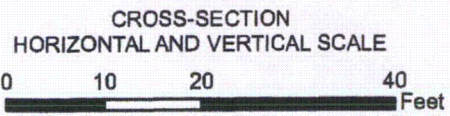
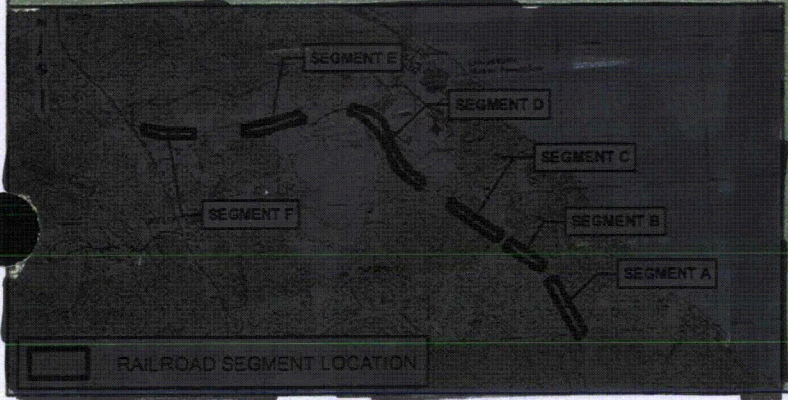
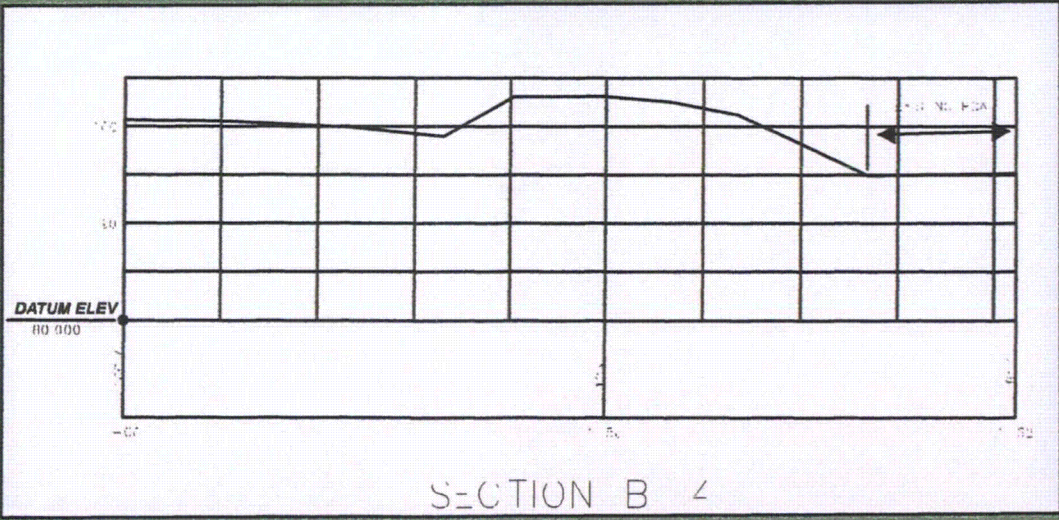
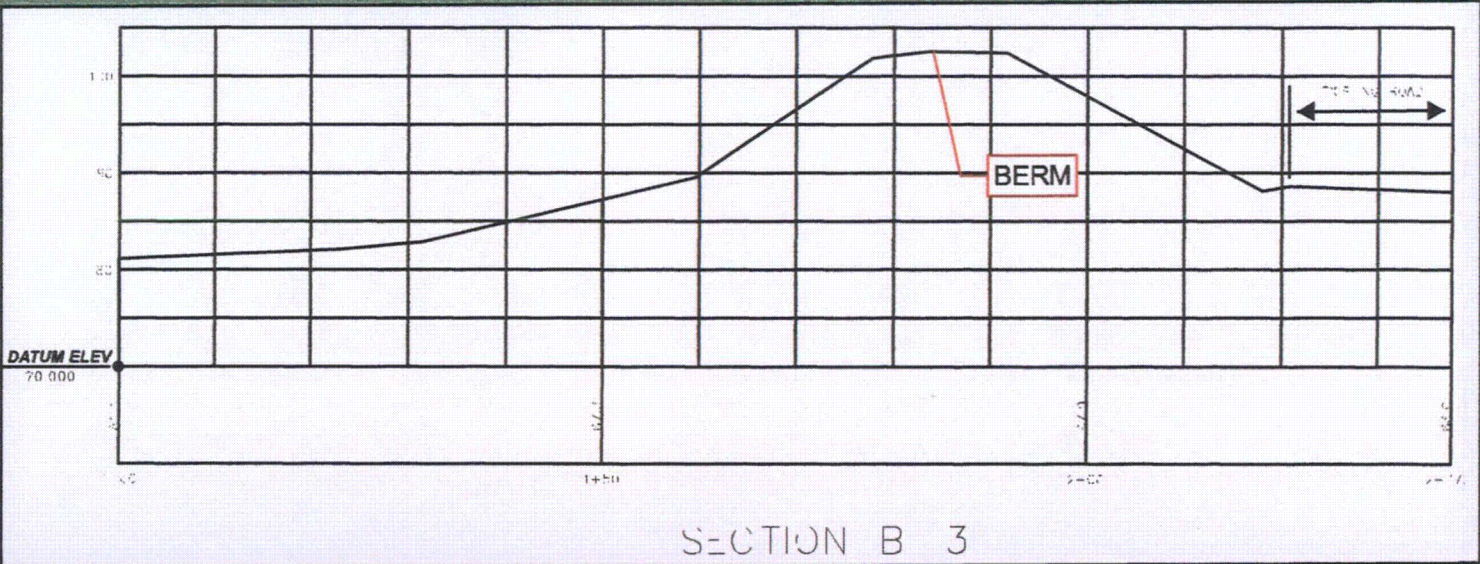
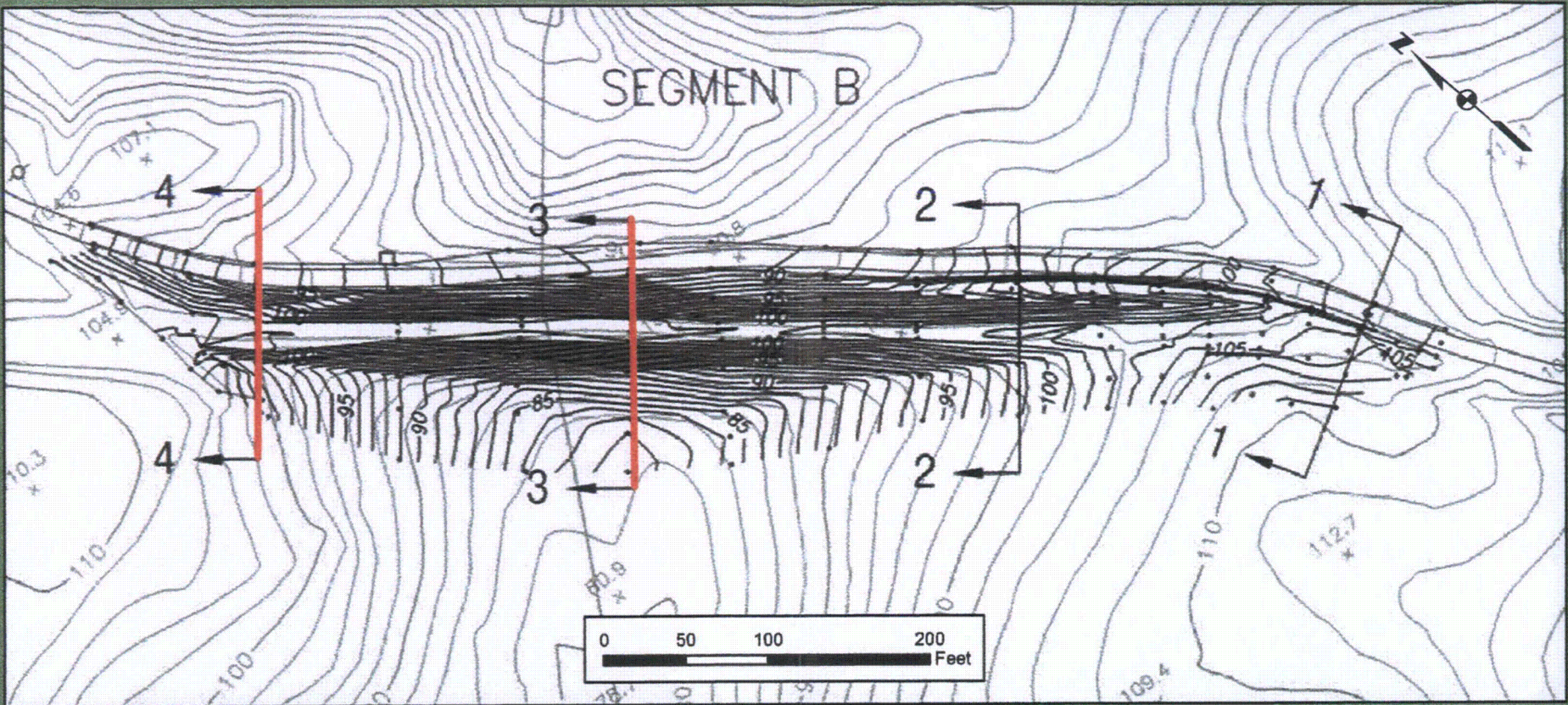
BY: DJP

DATE: 12/16/2009

CHECKED: HLC

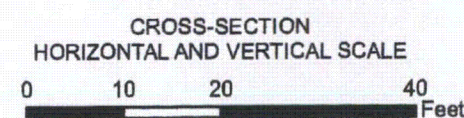
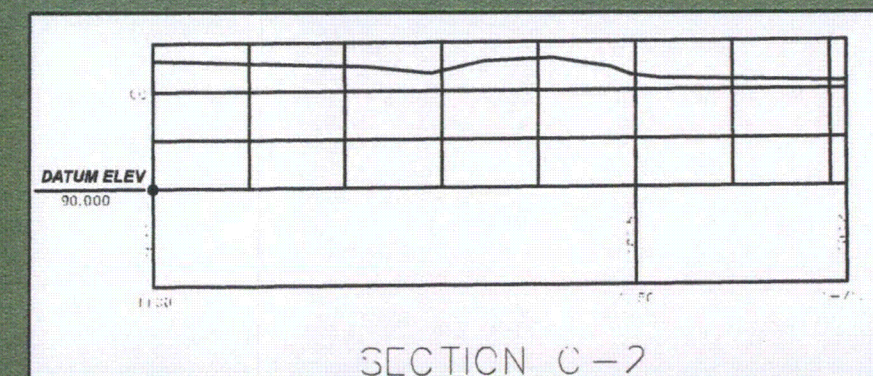
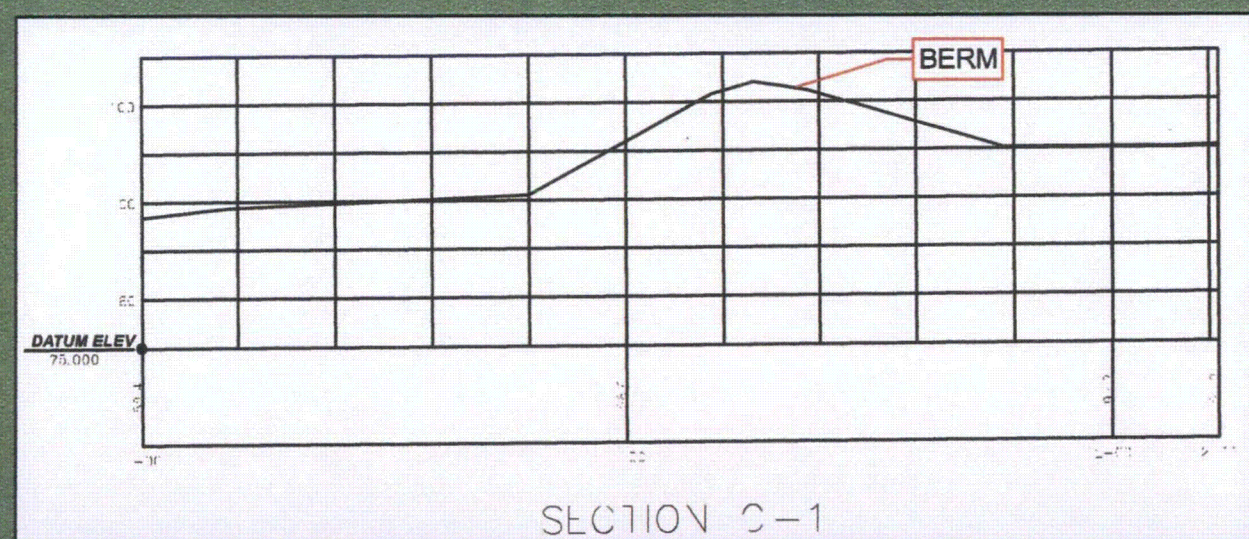
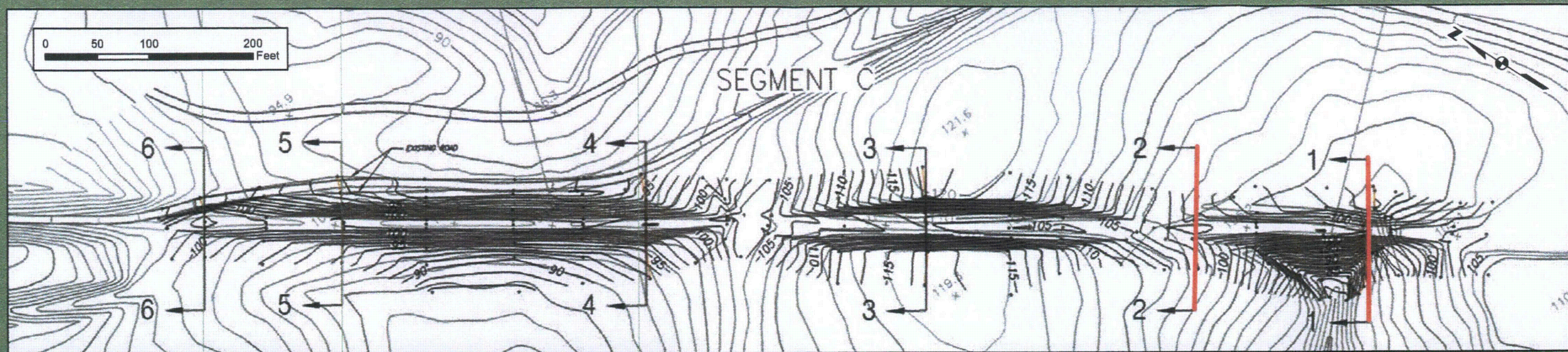
APPROVED: JNT

SEGMENT B



APPENDIX B-2b SEGMENT A PLAN VIEW AND CROSS-SECTIONS SECTIONS B-3 AND B-4	
CALVERT CLIFFS 3 NUCLEAR PROJECT (CC3) BALTIMORE AND DRUM POINT RAILROAD (BDPRR) DOCUMENTATION	
BY: DJP	DATE: 12/16/2009
CHECKED: HLC	APPROVED: JNT

SEGMENT C



APPENDIX B-3a SEGMENT A PLAN VIEW AND CROSS-SECTIONS SECTIONS C-1 AND C-2

**CALVERT CLIFFS 3 NUCLEAR PROJECT (CC3)
BALTIMORE AND DRUM POINT RAILROAD (BDPRR)
DOCUMENTATION**

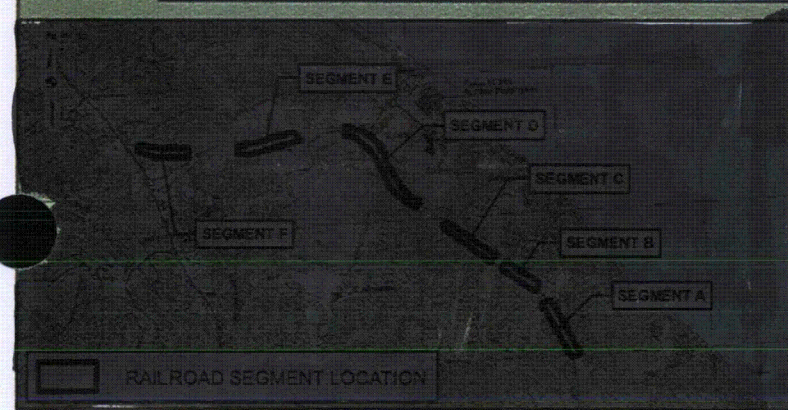
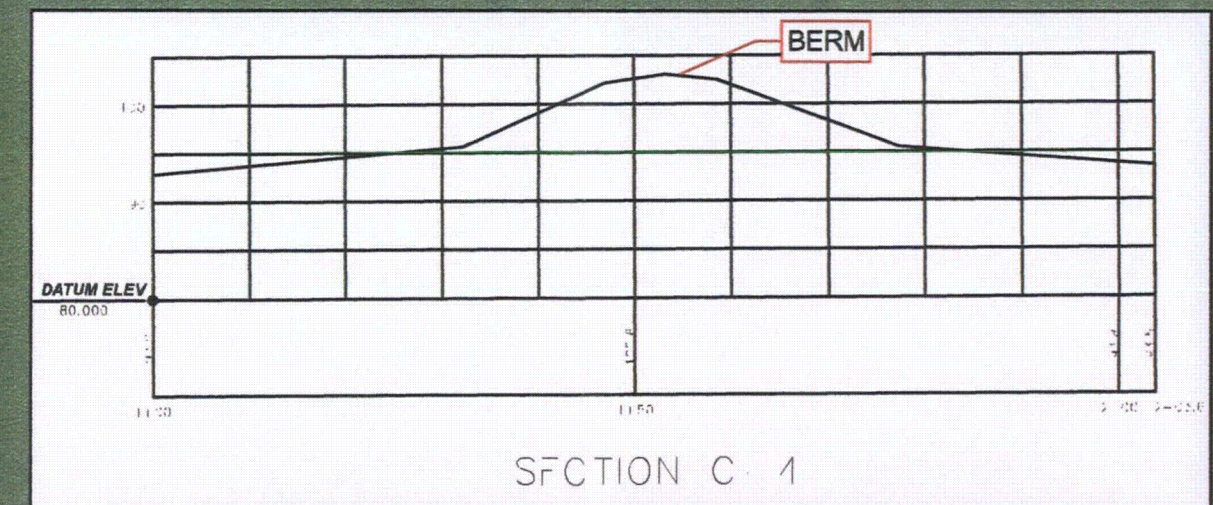
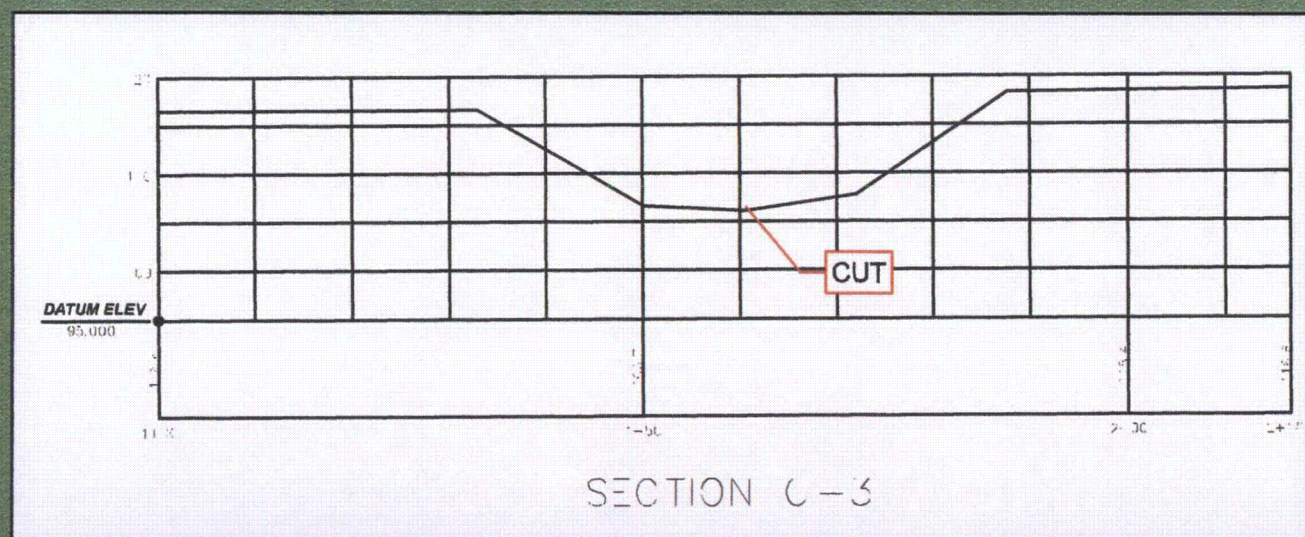
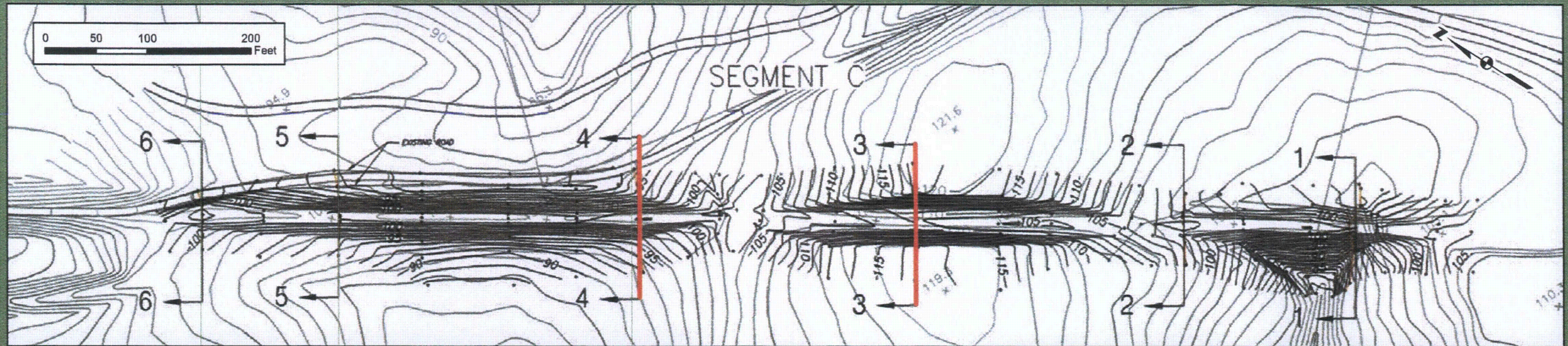
BY: DJP

DATE: 12/16/2009

CHECKED: HLC

APPROVED: JNT

SEGMENT C



CROSS-SECTION
HORIZONTAL AND VERTICAL SCALE
0 10 20 40 Feet

APPENDIX B-3b SEGMENT A PLAN VIEW AND CROSS-SECTIONS SECTIONS C-3 AND C-4

**CALVERT CLIFFS 3 NUCLEAR PROJECT (CC3)
BALTIMORE AND DRUM POINT RAILROAD (BDPRR)
DOCUMENTATION**

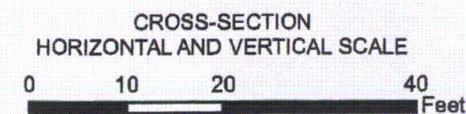
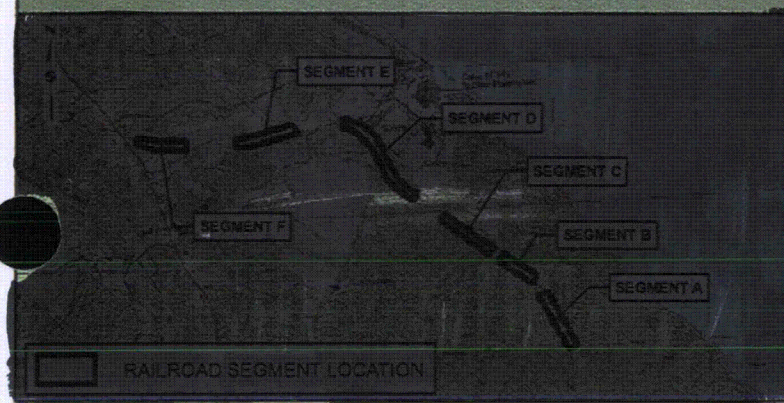
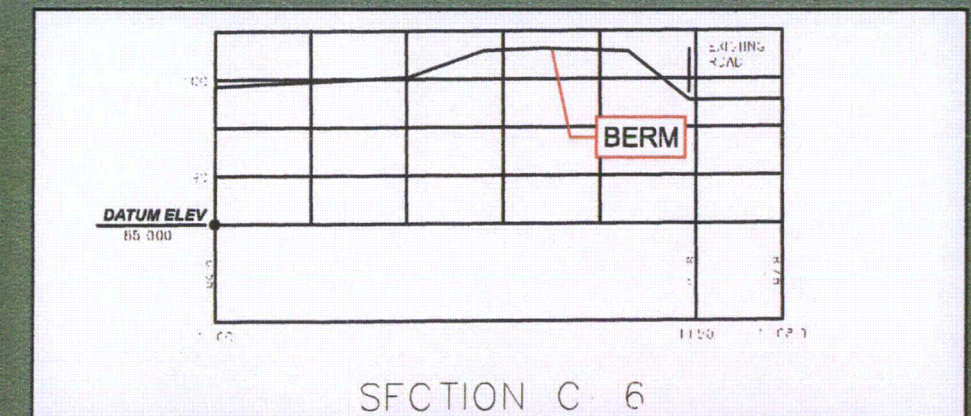
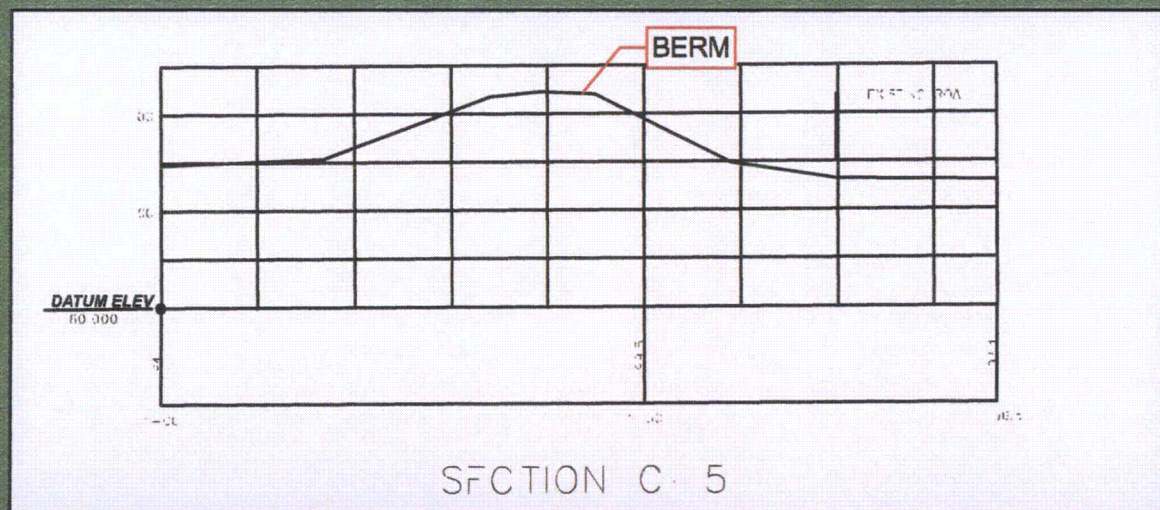
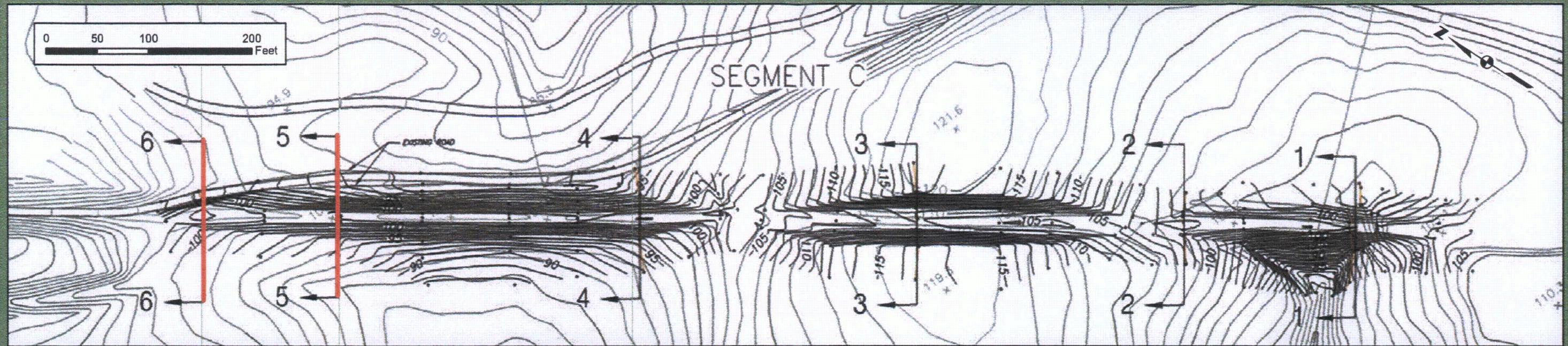
BY: DJP

DATE: 12/16/2009

CHECKED: HLC

APPROVED: JNT

SEGMENT C



APPENDIX B-3c SEGMENT A PLAN VIEW AND CROSS-SECTIONS SECTIONS C-5 AND C-6

**CALVERT CLIFFS 3 NUCLEAR PROJECT (CC3)
BALTIMORE AND DRUM POINT RAILROAD (BDPRR)
DOCUMENTATION**

BY: DJP DATE: 12/16/2009

CHECKED: HLC APPROVED: JNT