

THE BOOTHEEL PROJECT LLC

Wyoming



Presentation to the Nuclear Regulatory Commission

- ◆ Introduction to THE BOOTHEEL PROJECT LLC and Crosshair Exploration and Mining Corp.
- ◆ Introduction to Bootheel Project
- ◆ Informing NRC of project intentions
- ◆ Establishing key contacts
- ◆ Seeking Docket Number
- ◆ Working together to plan the future

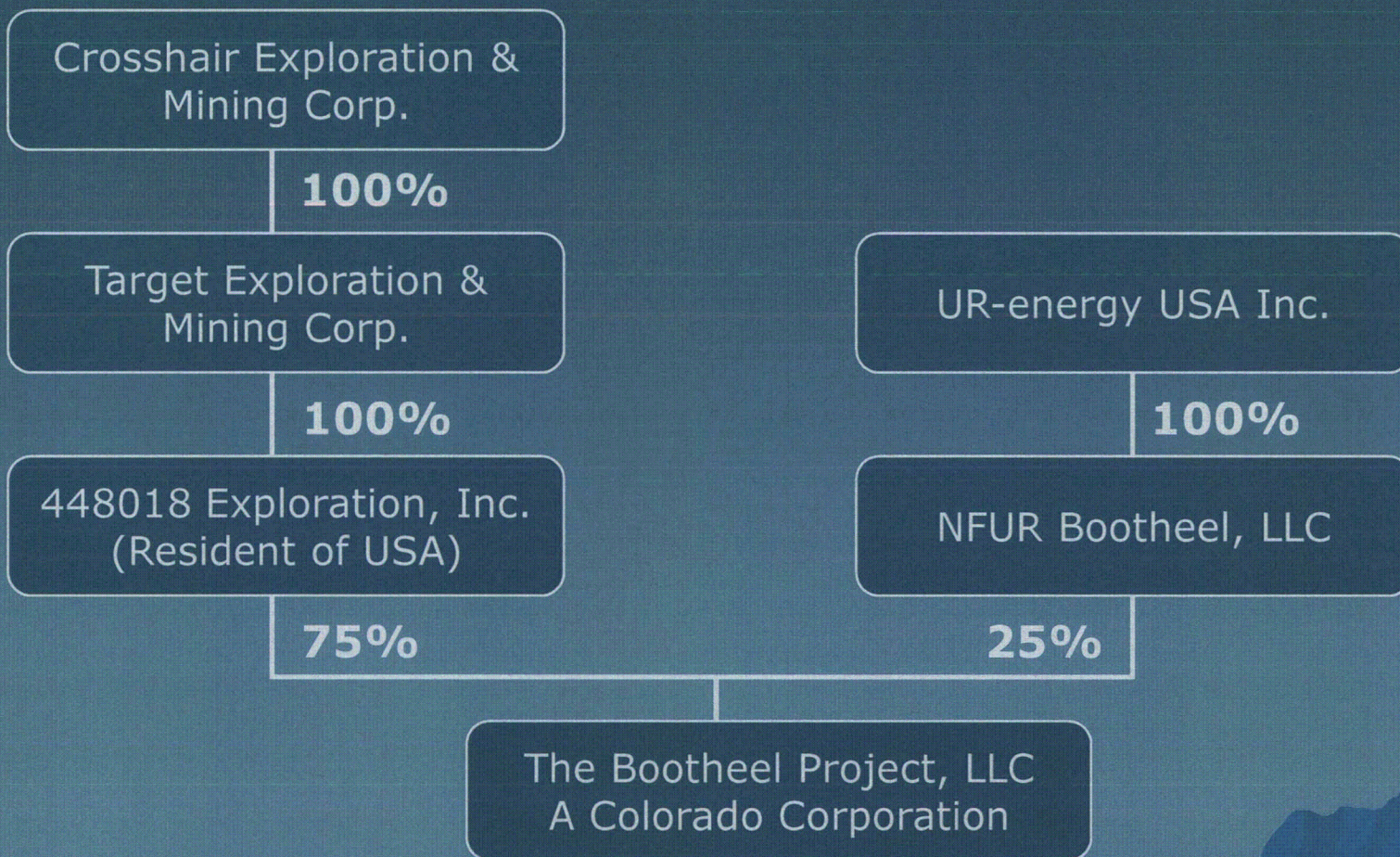
Legal Disclaimer

Statements contained in this presentation which are not historical facts are forward-looking statements that involve risks, uncertainties and other factors that could cause actual results to differ materially from those expressed or implied by such forward-looking statements. Factors that could cause such differences, without limiting the generality of the following, include: risks inherent in exploration activities; volatility and sensitivity to market prices for uranium; volatility and sensitivity to capital market fluctuations; the impact of exploration competition; the ability to raise funds through private or public equity financings; imprecision in resource and reserve estimates; environmental and safety risks including increased regulatory burdens; unexpected geological or hydrological conditions; a possible deterioration in political support for nuclear energy; changes in government regulations and policies, including trade laws and policies; demand for nuclear power; failure to obtain necessary permits and approvals from government authorities; weather and other natural phenomena; and other exploration, development, operating, financial market and regulatory risks. Although Crosshair believes that the assumptions inherent in the forward-looking statements are reasonable, undue reliance should not be placed on these statements, which only apply as of the date of this release. Crosshair disclaims any intention or obligation to update or revise any forward-looking statement, whether as a result of new information, future events or otherwise. United States investors are advised that while the term "inferred" resources is recognized and required by Canadian regulations, the SEC does not recognize that term. Investors are cautioned not to assume that all or any part of mineral deposits in this category will ever be converted into reserves.

Crosshair – The Company

- ◆ Crosshair Exploration & Mining Corp. is a uranium exploration and development company
- ◆ Portfolio consists of:
 - uranium development properties in Wyoming;
 - uranium and vanadium properties in Labrador Canada
- ◆ Experienced management – Partnered with Ur-Energy in WY
- ◆ Extensive data bases of historical uranium exploration well logs and geologic maps

Bootheel Organizational Chart

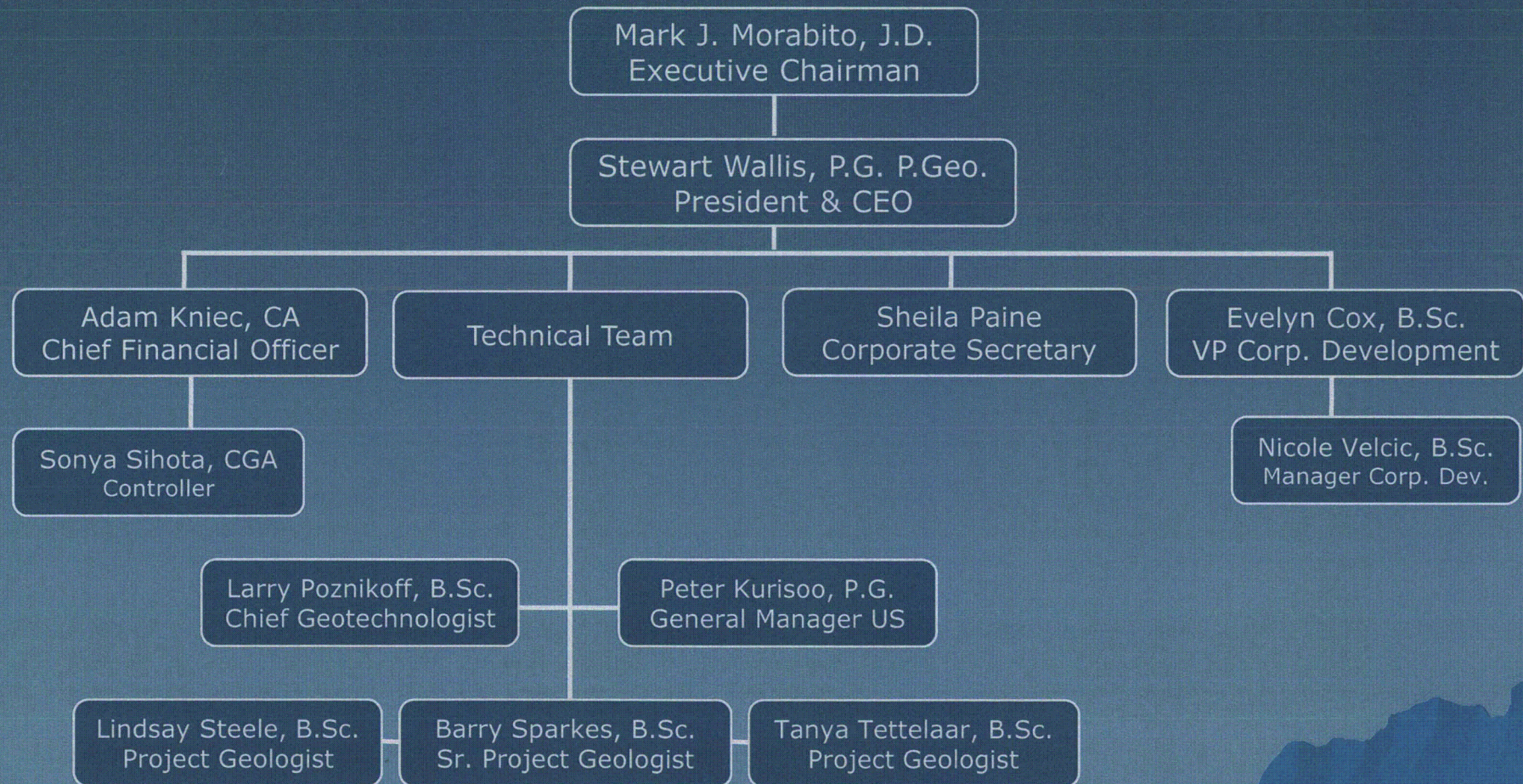


Crosshair Share Structure

CXX - TSX & CXZ - NYSE Amex

Shares Issued	131.5 million
Fully Diluted	161.4 million
Recent Price	CDN \$0.15
Market Cap	\$ 19.7 million
52 Week Range	CDN \$0.11 – 0.31
Avg. Daily Volume in last 3 months	450,000

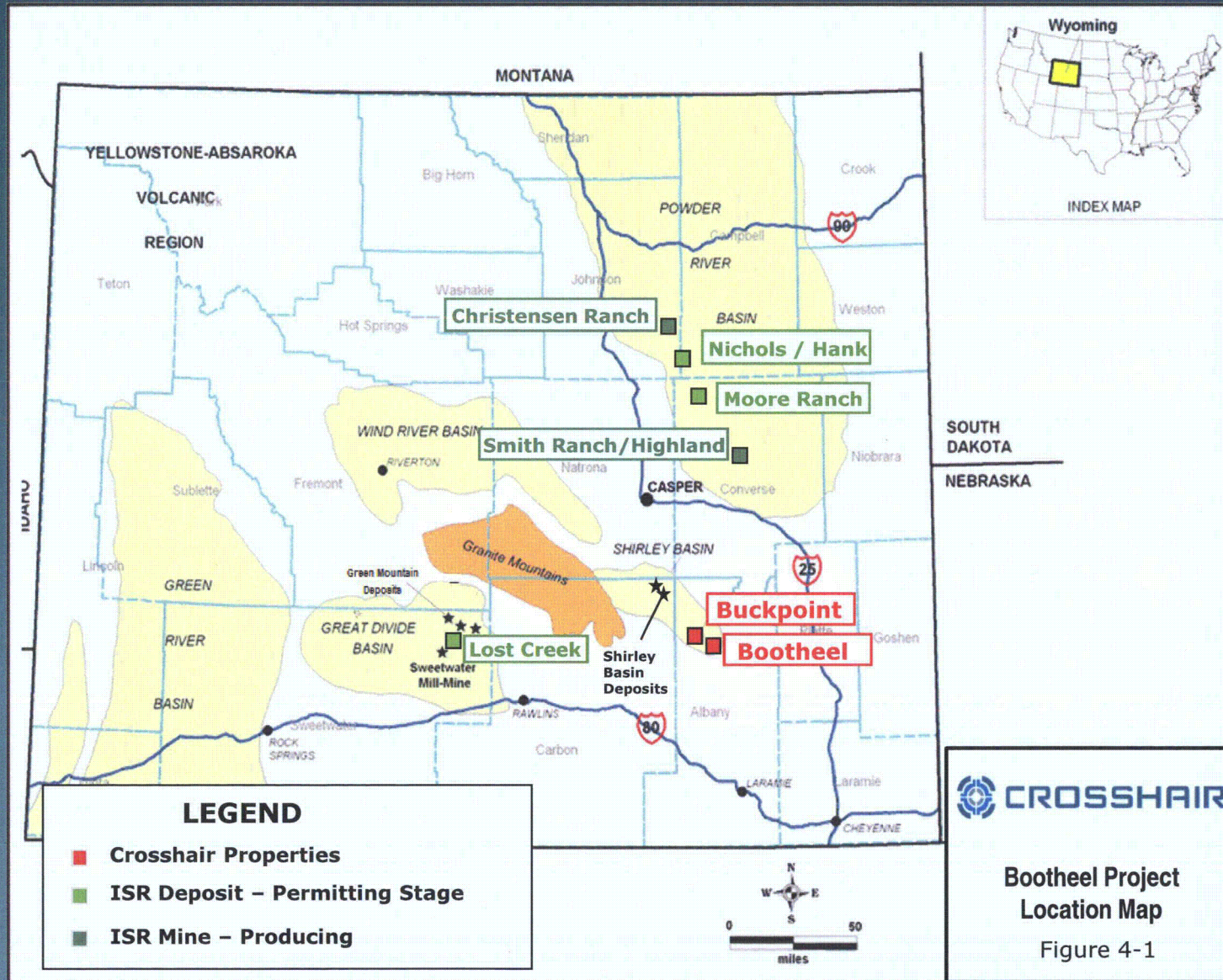
Crosshair Management Team



The Bootheel Project

The Bootheel Project is located in Wyoming and with its in-situ mining potential and initial NI 43-101 uranium resource estimate of 1.09 M lbs indicated and an additional 3.25 M lbs inferred, the project has exceeded the minimum mining threshold and is designed for near term production.

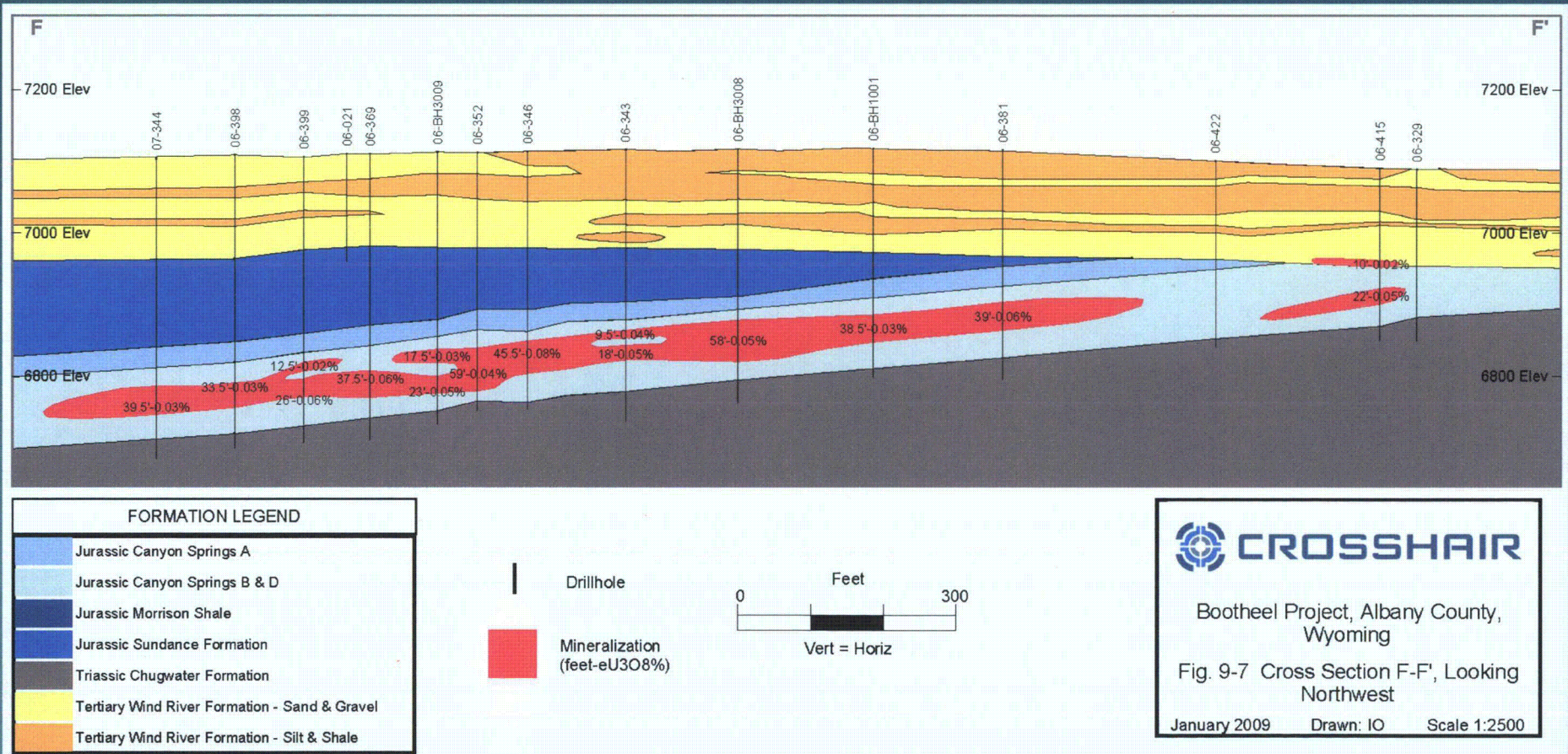
Wyoming Properties



Geology

- ◆ Located on southeast flank of Shirley Basin
- ◆ Underlain by Wagonbed Fm and mineralized Wind River Fm which overlie mineralized Sundance Fm
- ◆ Shale beds within the Sundance act as aquatards
- ◆ Other mineralized horizons not fully investigated to date

The Deposit



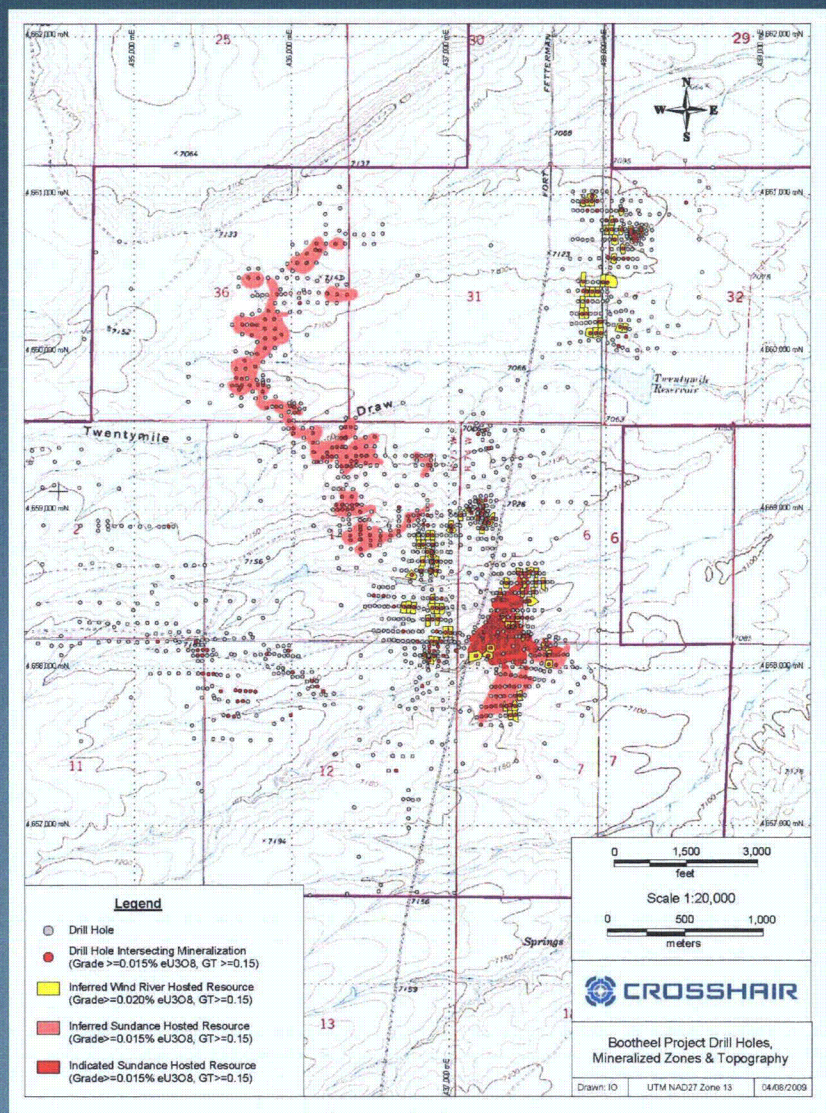
Bootheel Resource Estimation

Contains an NI 43-101 indicated resource of **1.09 million pounds of uranium** and an additional inferred resource of **3.25 million pounds of uranium**

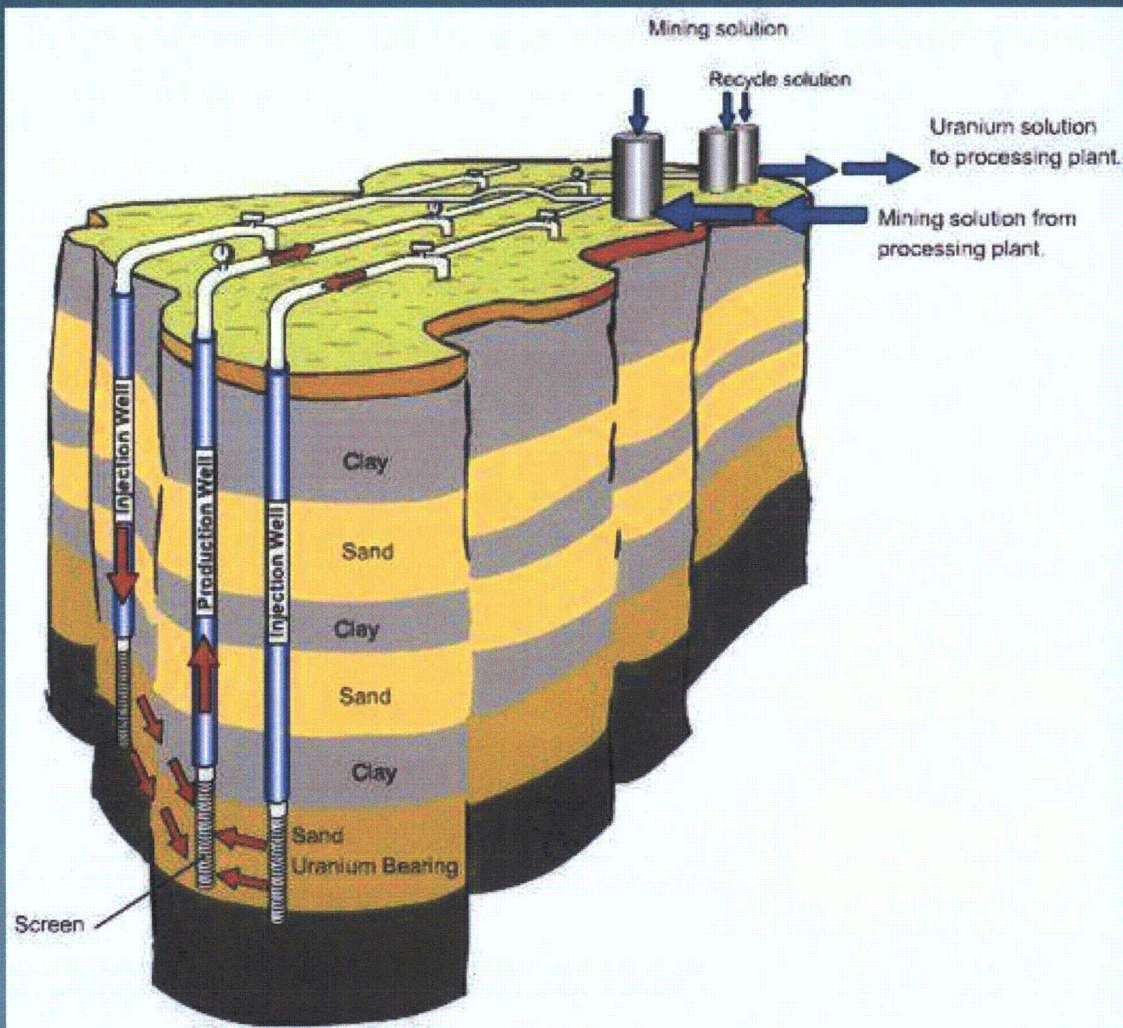
The resource remains open for expansion with less than 60% of the historical resource area included in this initial estimate.

Class	Formation	Tons (M)	% $eU_3O_8^*$	Pounds eU_3O_8 (M)
Indicated	Sundance	1.44	0.038	1.09
Inferred	Sundance	3.37	0.031	2.27
Inferred	Wind River	0.76	0.064	0.98
Inferred	Total	4.40	0.037	3.25

* These grades are reported as equivalent uranium as determined by downhole radiometric logging equipment.



In-Situ Recovery (ISR)



Advantages of ISR

- Relatively little environmental impact
- Lower capital costs
- Lower operating costs
- Need as little as 3 M pounds of uranium
- Quicker to get into production

Project Concept



Photo of Smith Ranch (PRI/Cameco)

- ◆ Project to be designed as satellite, with no on-site production of yellowcake
- ◆ ISR resource recovery to resin, on-site
- ◆ Resin trucked to existing off-site mill

Objectives and Milestones

- ◆ Environmental due diligence
- ◆ Environmental monitoring program: commenced
- ◆ Geohydrological monitoring/modeling
- ◆ Resource evaluation: completed
- ◆ Feasibility study
- ◆ Permitting program
- ◆ Approvals
- ◆ Construction
- ◆ Operation

Timeline

	2010				2011				2012				2013				2014				2015			
	Q 1	Q 2	Q 3	Q 4	Q 1	Q 2	Q 3	Q 4	Q 1	Q 2	Q 3	Q 4	Q 1	Q 2	Q 3	Q 4	Q 1	Q 2	Q 3	Q 4	Q 1	Q 2	Q 3	Q 4
Exploration Drilling																								
Definition Drilling																								
Environmental, Technical, & Prefeas. Studies																								
Permitting																								
Construction & Production Drilling																								
Mining																								
Restoration																								

⇒ 2020

⇒ 2023

Multi-track Permitting Strategy

- ◆ Wyoming Dept. of Environmental Quality
- ◆ Bureau of Land Management
- ◆ Nuclear Regulatory Commission
- ◆ Wyoming Game and Fish Dept.
- ◆ U.S. Environmental Protection Agency
- ◆ Local Communities, County, Tribes, NGOs

Environmental Studies to Date

- ◆ Wildlife: Avifauna
 - Sage Grouse/Raptors (April 2009 & 2010)
- ◆ Hydrology and Water Quality
 - Surface and Groundwater Data (June 2008)
- ◆ Background Gamma Radiation
 - at Drilling Locations (2008)



Wildlife: Avifauna

- ◆ Sage Grouse and Raptors
- ◆ Surveys carried out in 2009 and 2010
 - Two active sage grouse leks within 2-mile radius, plus one active lek at 2.5 miles.
 - Three active raptor nests within 2-mile



Hydrology and Water Quality



- ◆ Preliminary studies in June 2008
- ◆ Grab samples from two wells and two stock ponds (no domestic use).
 - Gross alpha exceeded US EPA MCLs at one surface and one groundwater site
 - Other radiological parameters generally low or non-detect

Background Gamma Radiation

- ◆ Preliminary ground measurements at 2008 drilling locations prior to disturbance
- ◆ No significant radioactivity (most gamma measurements background $\mu\text{R/hr}$)

Baseline Studies



- ◆ Moving forward, key baseline studies include:
 - Meteorology
 - Surface Water and Groundwater
 - Soils and Geology
 - Wildlife, Vegetation, and Terrestrial Ecology
 - Radiology
 - Cultural Resources and Archeology
 - Social and Economic Conditions/ Land Use
- ◆ Key Guidance Documents include: Regulatory Guides 3.46, 3.63, 4.14; NUREG 1569, 1748, 1910.

Summary

- ◆ The Bootheel Project is at an early stage in Exploration and Development
- ◆ The next milestone is hydrological testing of the Sundance Fm
- ◆ A comprehensive program is being designed to validate the characteristics of the aquifer

Thank-you very much!

Phone: 604-681-8030
Fax: 604-681-8039
Toll Free: 1-866-863-8030

Mailing Address:

1240 – 1140 West Pender St.
Vancouver, BC, V6E 4G1

Questions:

info@cxxcorp.com

ethan.brown@aata.com

www.crosshairexploration.com