



STATE OF NEW YORK  
OFFICE OF THE ATTORNEY GENERAL

RECEIVED

2010 AUG -4 PM 2:30

RULES AND DIRECTIVES  
BRANCH  
USNRC

ANDREW M. CUOMO  
ATTORNEY GENERAL

DIVISION OF SOCIAL JUSTICE  
ENVIRONMENTAL PROTECTION BUREAU

**VIA OVERNIGHT COURIER & E-MAIL**

August 3, 2010

Michael Lesar, Chief  
Rulemaking, Directives, and Editing Branch  
Division of Administrative Services  
Office of Administration  
Mailstop T-6D59  
U.S. Nuclear Regulatory Commission  
11555 Rockville Pike  
Rockville, Maryland 20852-2738

12/31/2008  
73 FR 80440  
33

Re: *Supplemental Comments Concerning Indian Point Draft SEIS*

Dear Mr. Lesar:

As the State of New York has previously informed NRC, Figure 2-9, which appears on page 2-25 of the Draft Supplemental Environmental Input Statement (DSEIS), is incomplete and, thus, presents an inaccurate depiction of the topography, river valley, and river course and turns near the Indian Point facilities. To adequately assess the license application and its safety and environmental impacts, the Staff, Atomic Safety and Licensing Board, Commissioners, and the public require a complete and accurate depiction of such features.

Accompanying this letter are three maps that contain an accurate depiction of the topographic and river features surrounding the facilities. Please replace the inaccurate Figure 2-9 with the accompanying maps in any subsequent environmental impact statement.

In addition, please also include the entirety of the following quadrangle maps in any subsequent environmental impact statement: U.S. Department of the Interior, Geological Survey, Quadrangle Map, 7.5 Minute Series (Topographic) Peekskill, NY (41073-C8-TF-024) and U.S. Department of the Interior, Geological Survey, Quadrangle Map, 7.5 Minute Series (Topographic) Haverstraw, NY (N4107.5—W7352.5/7.5). The State previously provided copies of these two quadrangle maps to NRC Staff.

Respectfully,

John Sipos

Assistant Attorney General

cc: Janice Dean, AAG

SUNSI Review Complete

E-RIDS = ADM-03  
Cdd = A. Stuyvenberg (9153)

Template = ADM-03

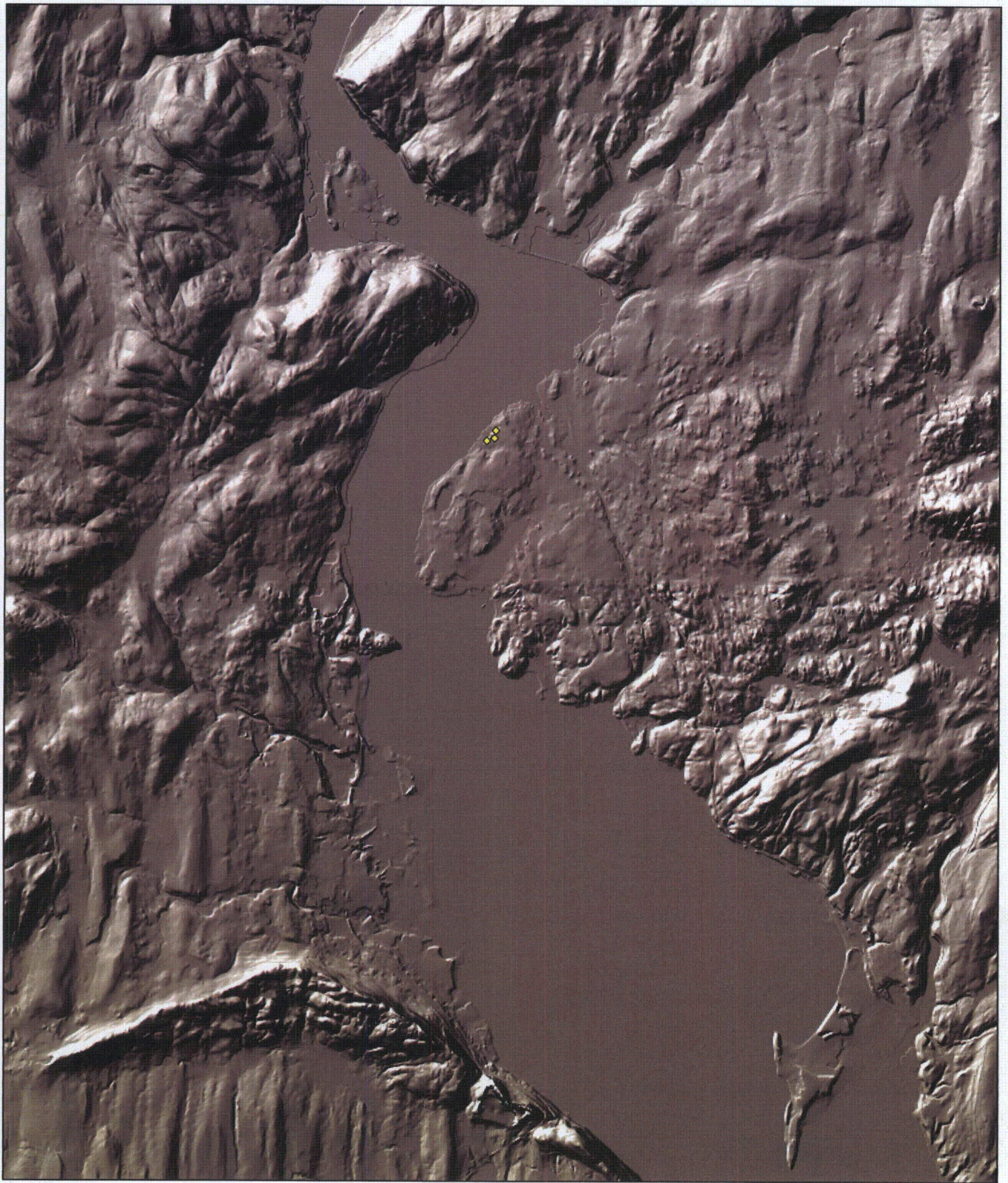
enclosures:

- (1) hillshade map, using USGS 10m digital elevation model (scale: 1 mile =  $1\frac{3}{16}$  inch)
- (2) hillshade map, using USGS 10m digital elevation model (scale: 3 miles = 1 inch)
- (3) topographic map, using National Geographic Society and ESRI data

references (previously submitted):

- (1) U.S. Department of the Interior, Geological Survey, Quadrangle Map, 7.5 Minute Series (Topographic) Peekskill, NY (41073-C8-TF-024)
- (2) U.S. Department of the Interior, Geological Survey, Quadrangle Map, 7.5 Minute Series (Topographic) Haverstraw, NY (N4107.5—W7352.5/7.5)

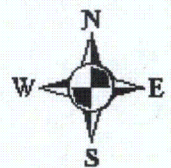




◆ Reactors

1 0.5 0 1 Miles

Hillshade from USGS 10 meter digital elevation model  
(Prepared with ESRI GIS Software)

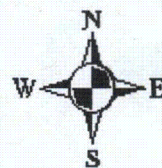






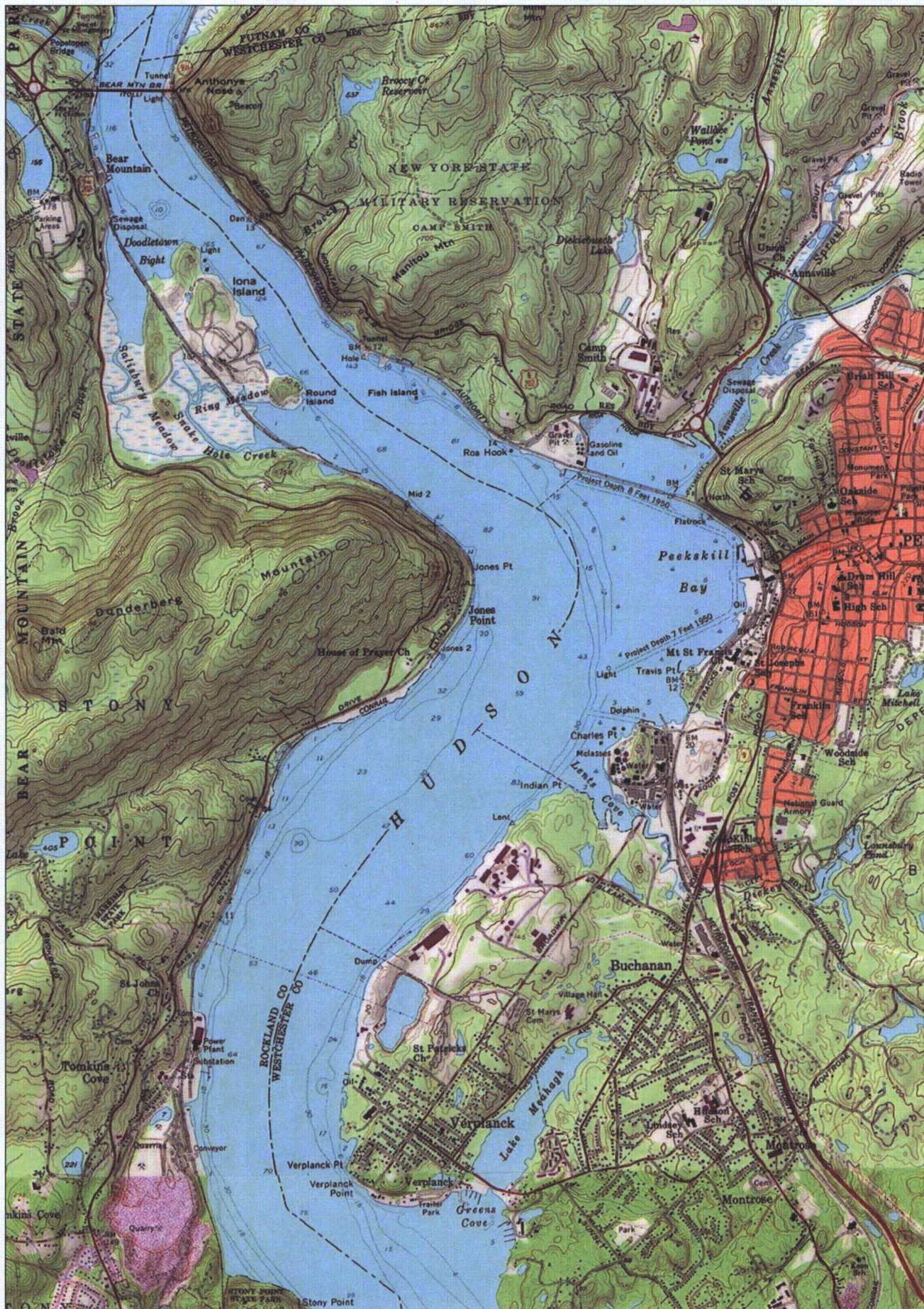
♦ Reactors

3 1.5 0 3 Miles



Hillshade from USGS 10 meter digital elevation model  
(Prepared with ESRI GIS Software)





0.5 0.25 0 0.5 Miles

Topographic contours are in feet

Topographic Map from the National Geographic Society

Publisher: ESRI, Redlands, CA; <http://resources.esri.com/arcgisonline/services/>  
(Prepared with ESRI GIS Software)

