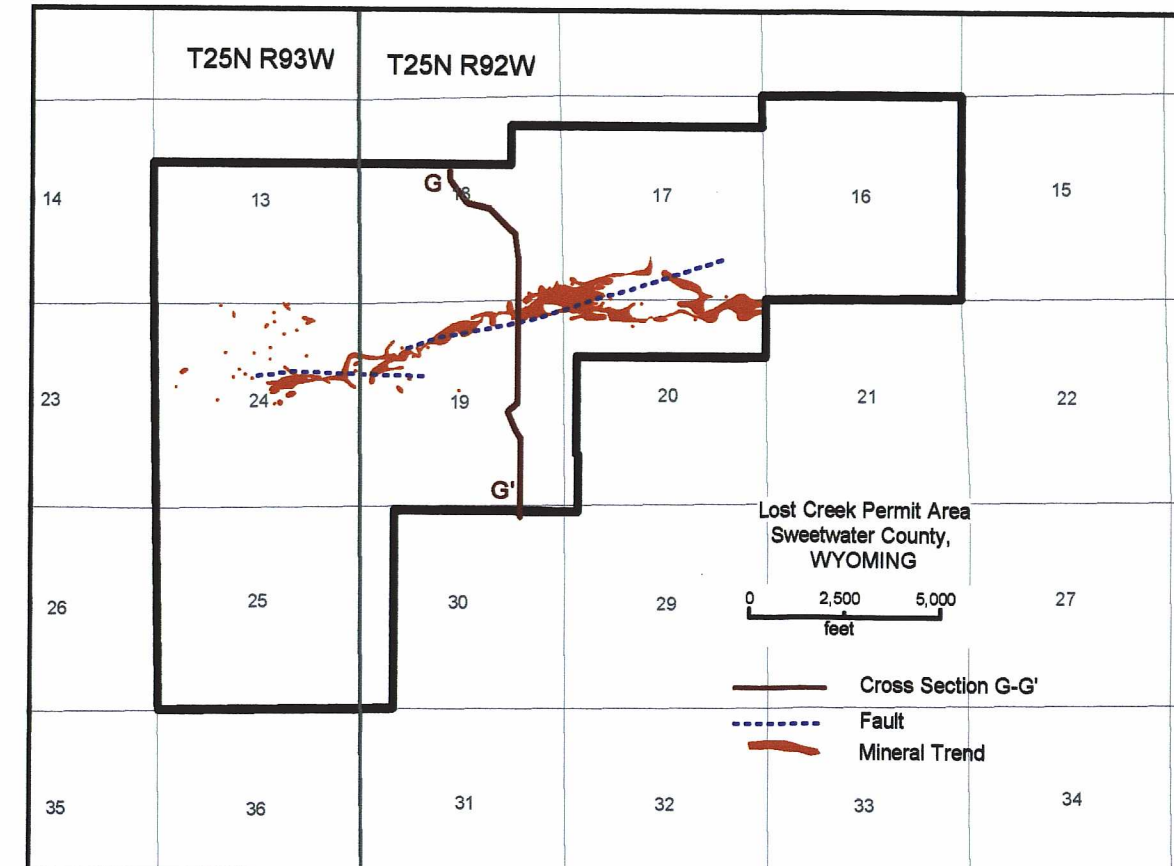
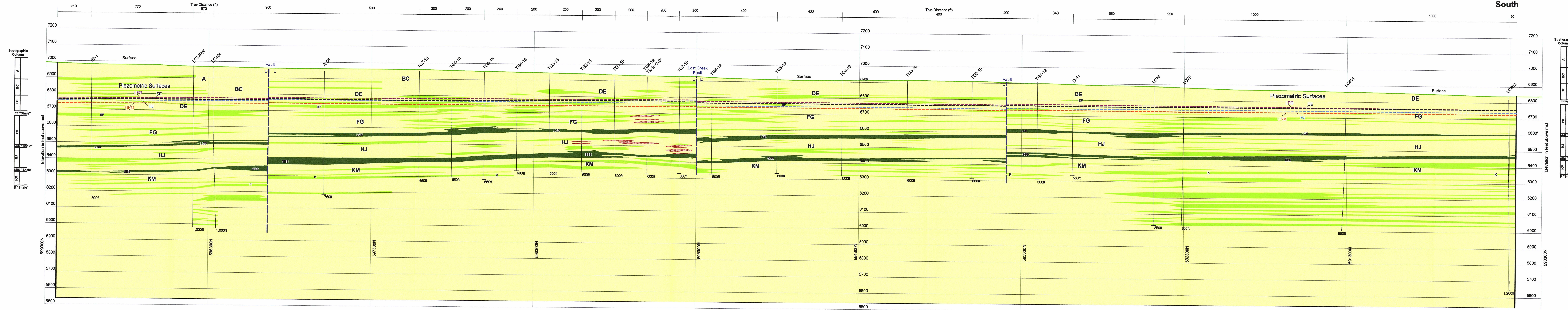


G
North

G'
South



Lost Creek ISR, LLC
Littleton, Colorado, USA

AATA INTERNATIONAL, INC.
Fort Collins, Colorado, USA

Legend

Mineralization Polygons

Aquifer

Sand

Stratigraphic Units

A - A Horizon
BC - BC Horizon
DE - DE Horizon
FG - FG Horizon
HJ - HJ Horizon
KM - KM Horizon
K - K Horizon

PLATE 2.6-1f
Cross Section G-G'
Lost Creek Permit Area

Issued For: NRC TR1.0 Drawn By: ML
Issued/Revised: 10.11.07/02.27.09
Drawing No.: NRCTR1.0 PLATE2.6-1b 10.11.07
1" = 400' (no vertical exaggeration)

D-05