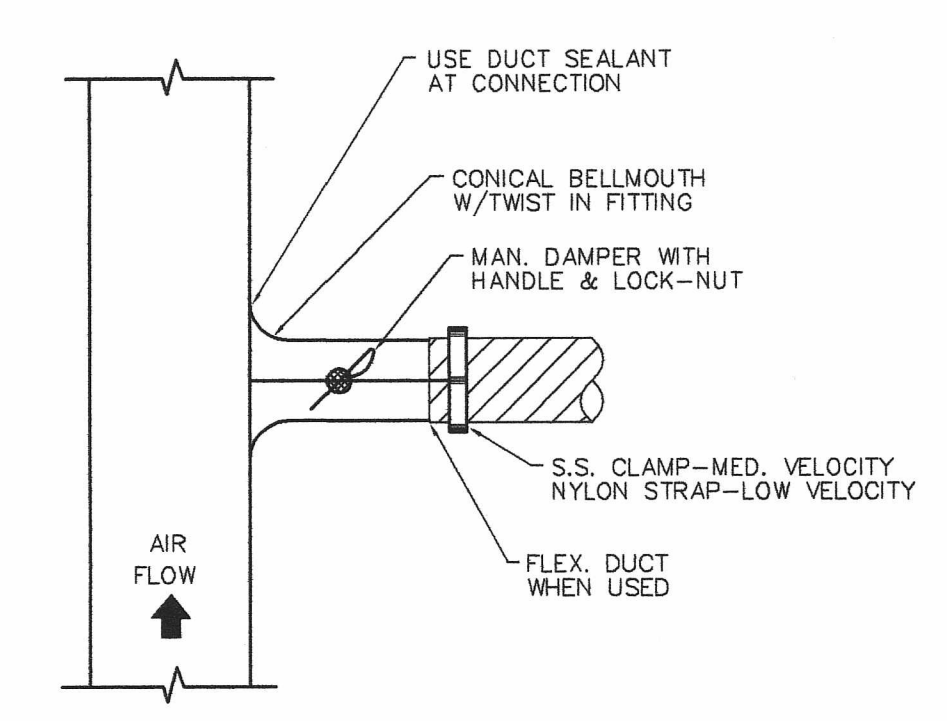


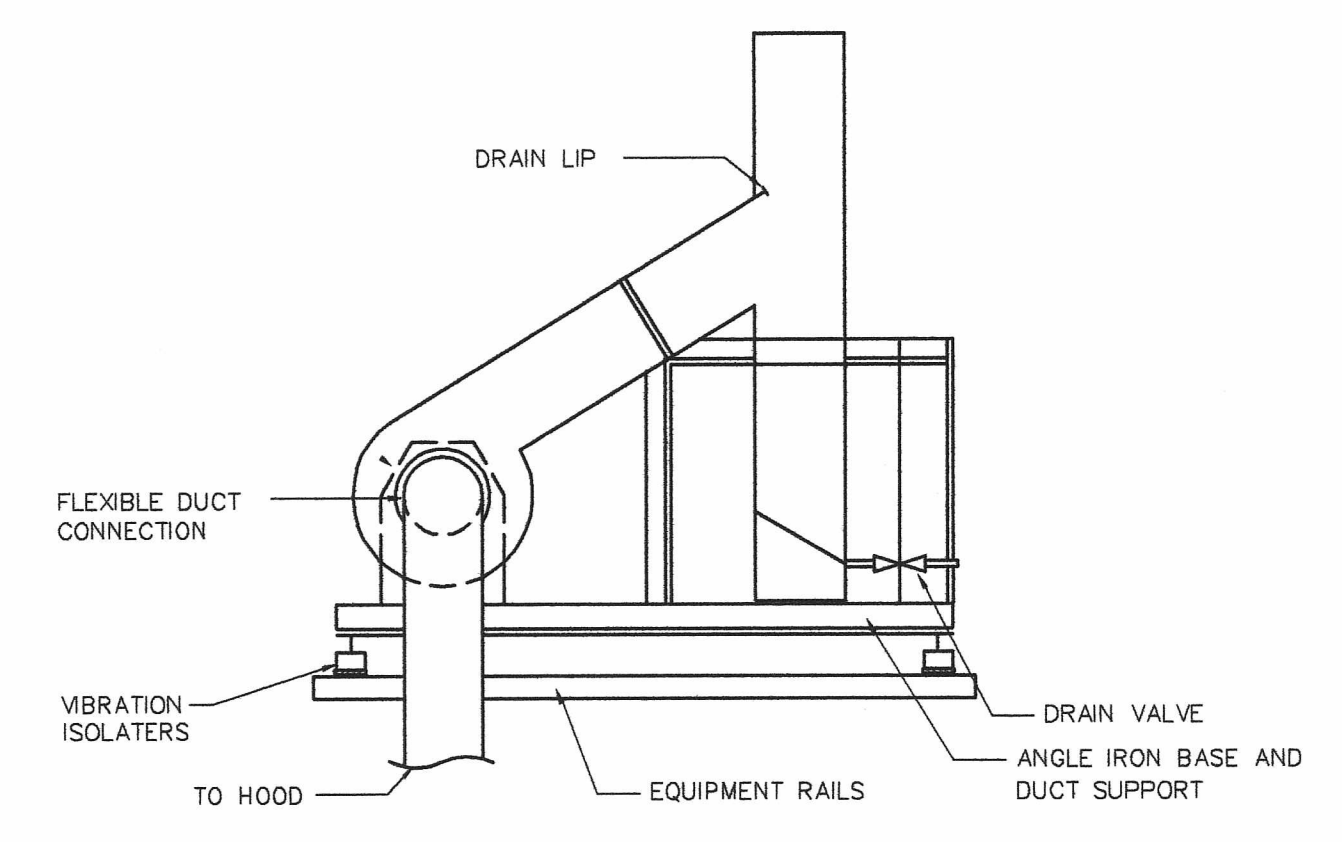
D-03

THIS DRAWING AND ALL INFORMATION THEREON IS THE PROPERTY OF WEST PLAINS ENGINEERING, INC. AND IS PROTECTED BY LAWS GOVERNING CONFIDENTIALITY AND PATENT OF PRODUCTS. THIS DRAWING IS NOT TO BE USED FOR PURPOSES OTHER THAN THOSE SPECIFICALLY AGREED TO BY WEST PLAINS ENGINEERING, INC.

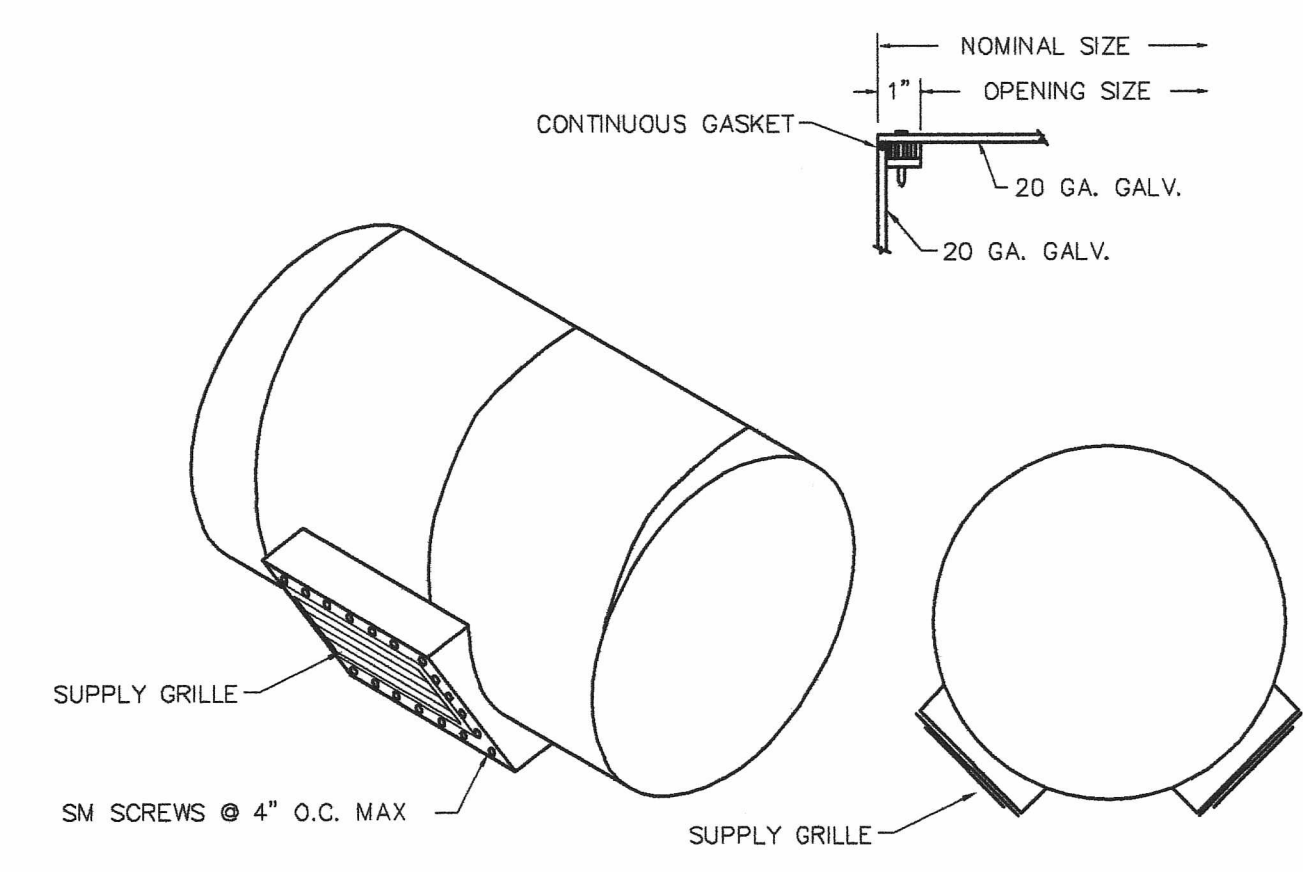
REVISIONS		
#	DESCRIPTION	DATE
-	-	-
-	-	-
-	-	-



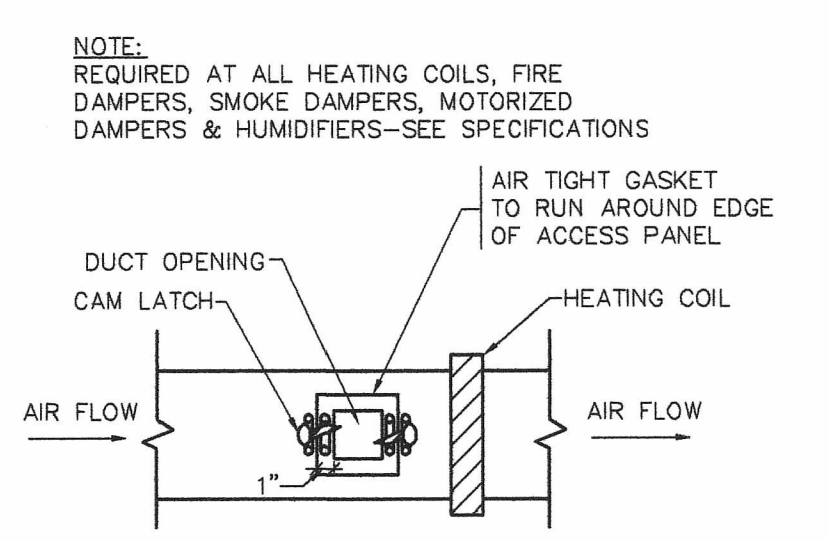
ROUND DUCT TAKE-OFF DETAIL
NO SCALE



EXHAUSTER DETAIL
NO SCALE



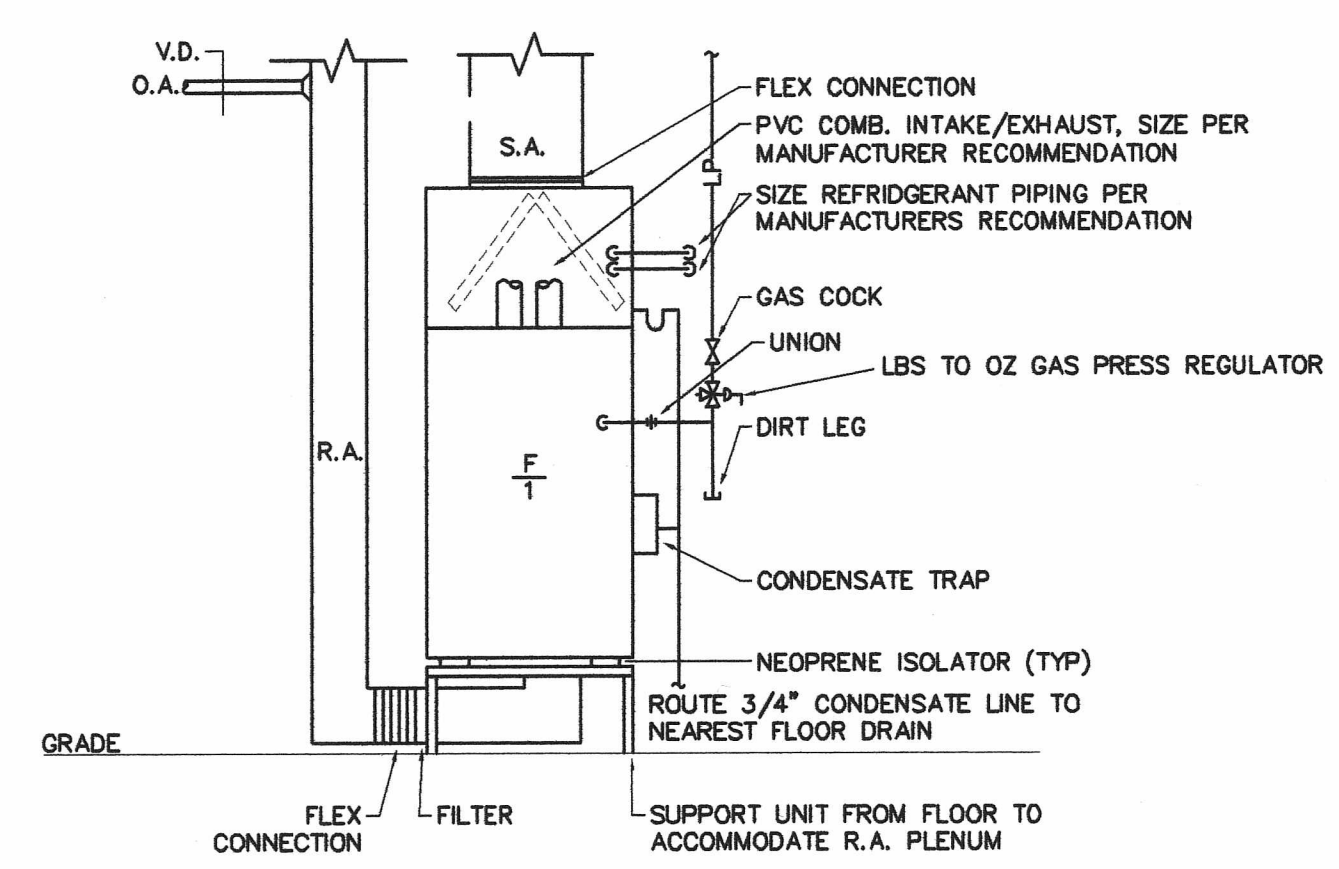
ROUND DUCT BOOT DETAIL
NO SCALE



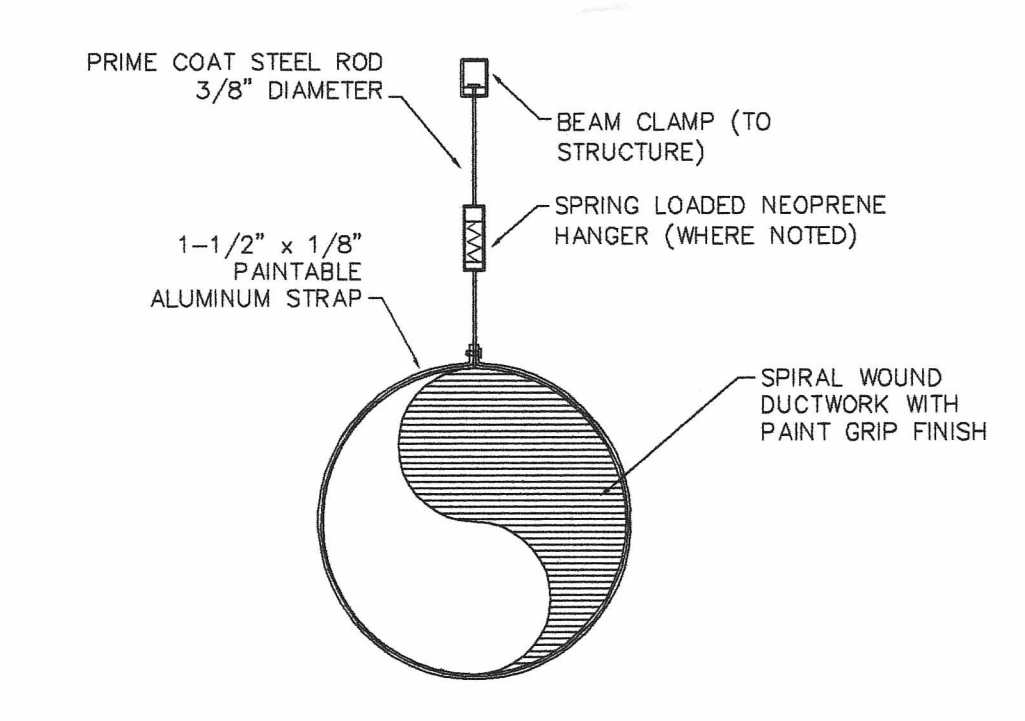
ACCESS PANEL SIZE SCHEDULE	
DUCT SIZE	ACCESS PANEL SIZE
6" TO 15"	10" W X (DUCT DEPTH-2") D
15" TO 21"	12" W X (DUCT DEPTH-2") D
21" AND ABOVE	18" W X (DUCT DEPTH-2") D

ALL OTHER ACCESS PANELS TO BE A MINIMUM OF 15" X 15" WHERE DUCT SIZE ALLOWS. USE FOUR CAM LATCHES ON PANELS LARGER THAN 18" X 18" SIZE.

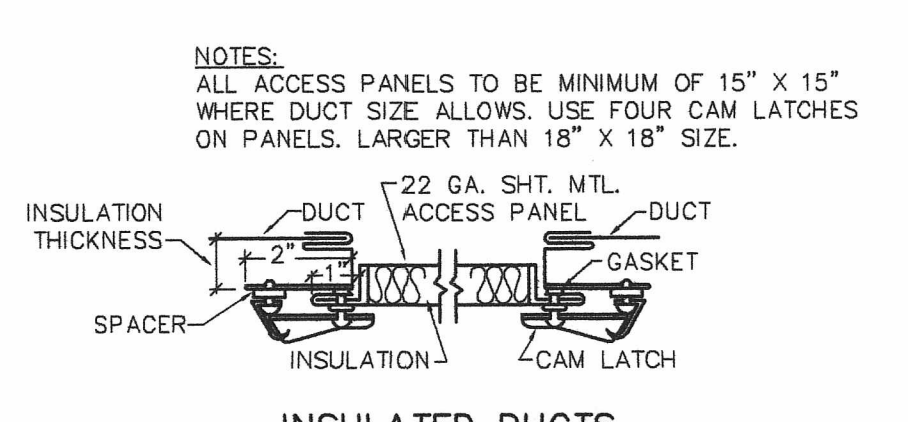
ACCESS PANEL DETAIL
NO SCALE



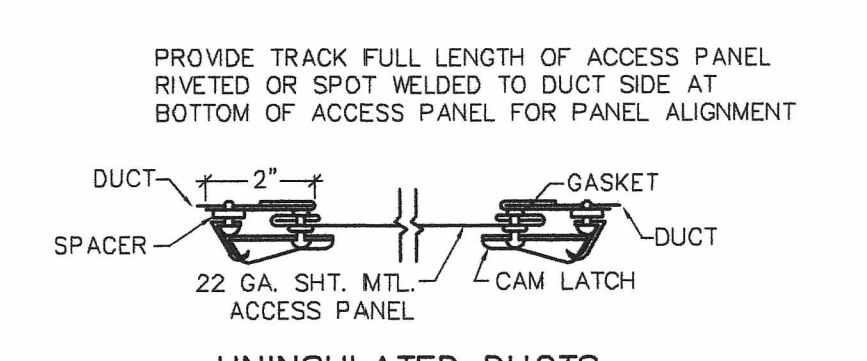
HIGH EFFICIENCY FURNACE DETAIL
NO SCALE



SPIRAL DUCT SUPPORT DETAIL
NO SCALE

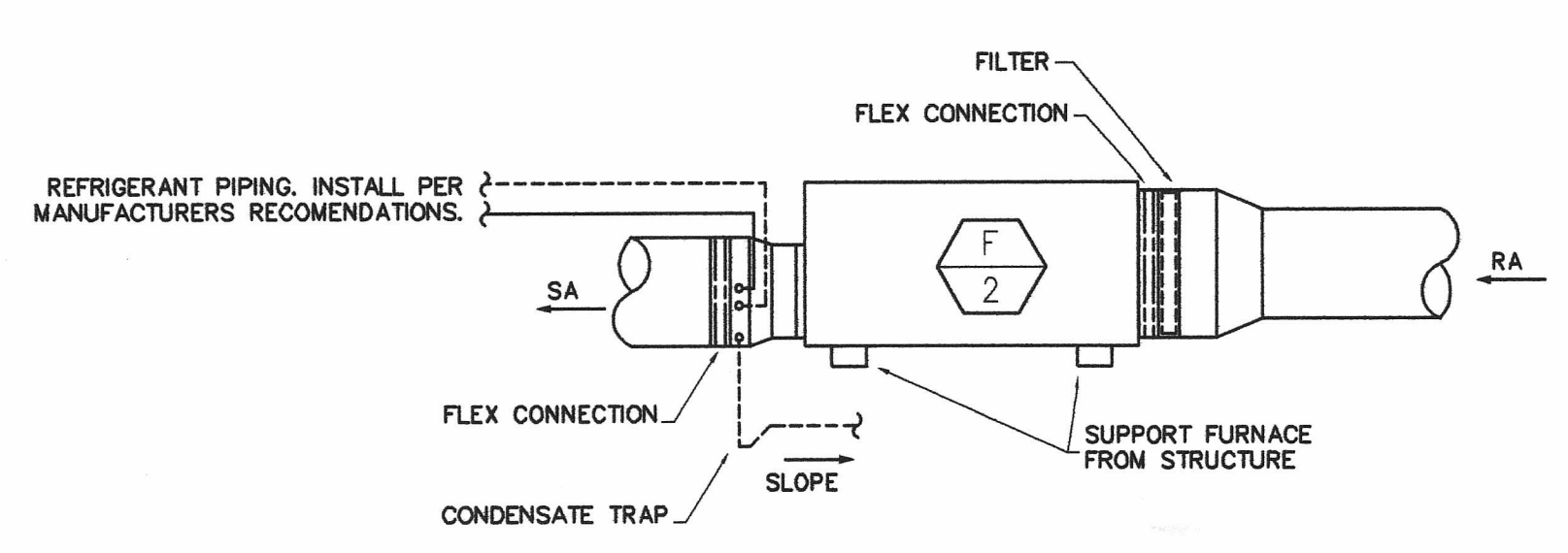


INSULATED DUCTS

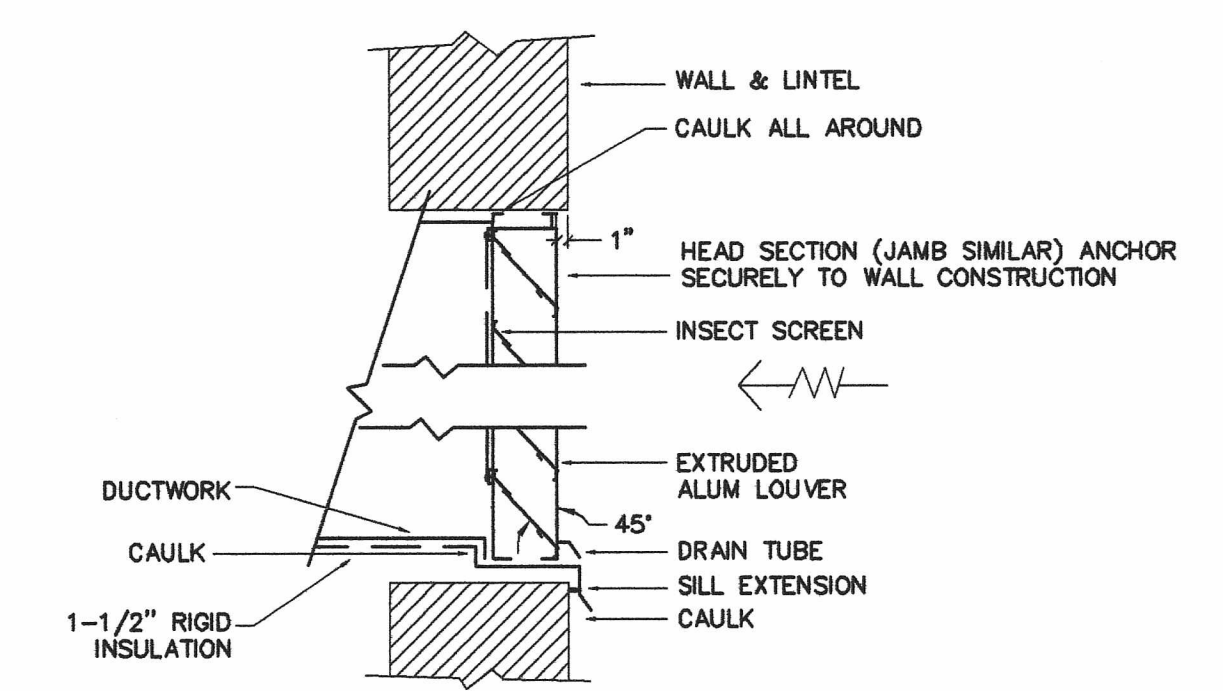


UNINSULATED DUCTS

LOW PRESSURE DUCTWORK ACCESS PANELS
NO SCALE



HORIZONTAL FURNACE DETAIL
NO SCALE

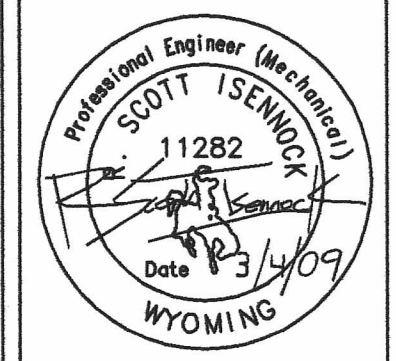


LOUVER-INTAKE AIR DETAIL
NO SCALE

VENTILATION SYMBOLS			
	SUPPLY DUCT (UP & DOWN)		MANUAL VOLUME DAMPER
	RETURN DUCT (UP & DOWN)		BRANCH DUCT INTO SIDE OF MAIN DUCT
	EXHAUST DUCT (UP & DOWN)		DUCT RISE OR DROP IN DIRECTION OF AIR FLOW
	STANDARD RADIUS ELBOW R EQUAL W (MINIMUM)		DUCT DIMENSION- WIDTH X DEPTH
	DUCT TURN WITH TURN VANES		DUCT INSULATION (SEE SPECIFICATION)
	FLEXIBLE DUCT CONNECTION		DUCT TURN AND AIR SPLIT TYPE TAKEOFF (NON-ADJUSTABLE)
	SPIRAL DUCTWORK		GRILLE, REGISTER & DIFFUSER DESIGNATION (SUPPLY, RETURN, EXHAUST, & TRANSFER)
	F-FIRE DAMPER		M-MOTORIZED DAMPER
	S-SMOKE DAMPER		B-BACKDRAFT DAMPER
	C-COMBINATION FIRE SMOKE DAMPER		-W- FLEX DUCT (5' MAXIMUM)

HVAC DETAILS
LOST CREEK ISR
PROCESSING PLANT
 NEAR BAROIL, WYOMING

PROJECT#:	C08028
CADFILE:	C08028 M3
DESIGNED:	SI
DRAWN:	JM
APPROVED:	SI
DATE:	3/4/09



SHEET:
M3
 Copyright © 2001

D-03