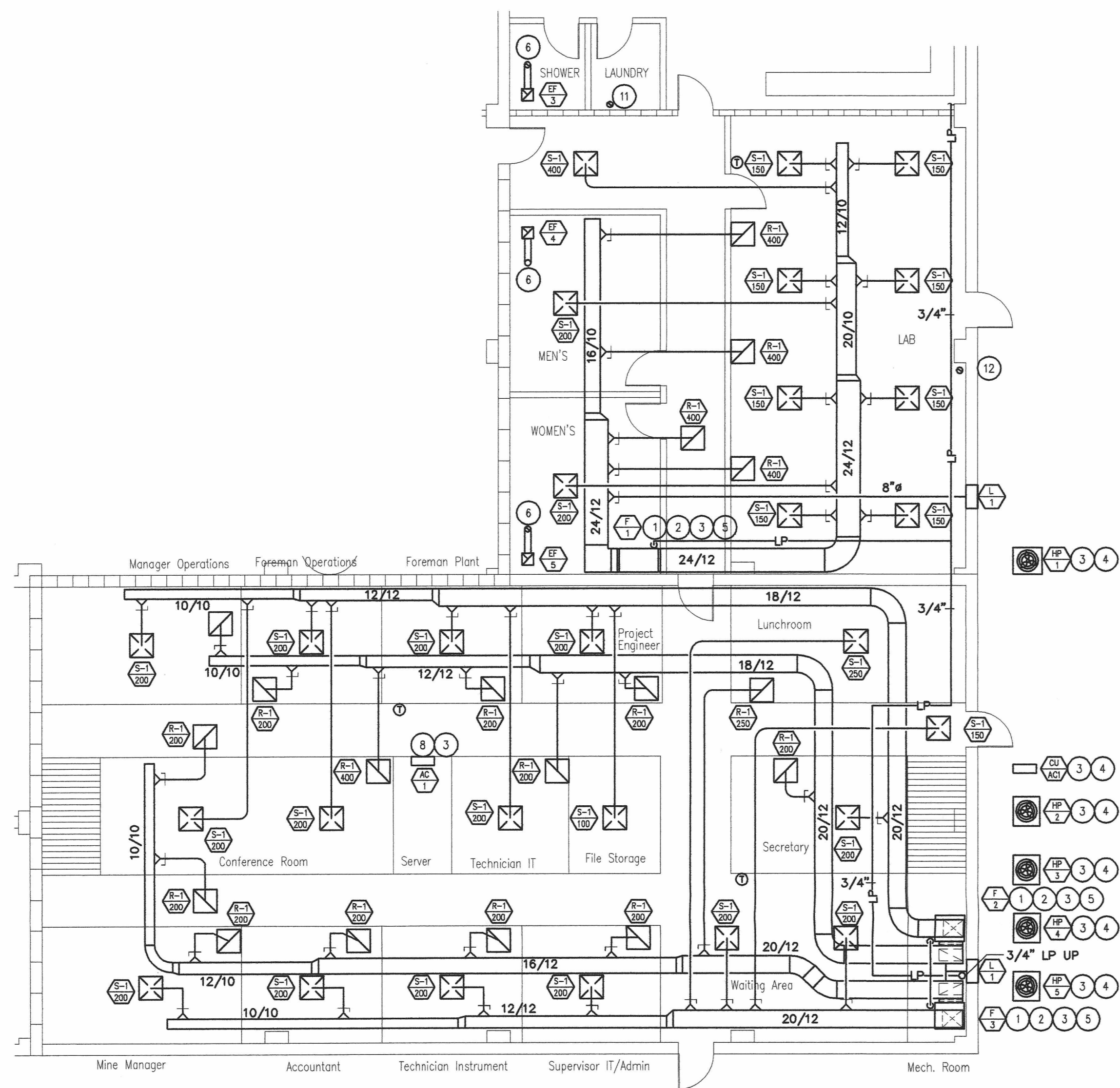
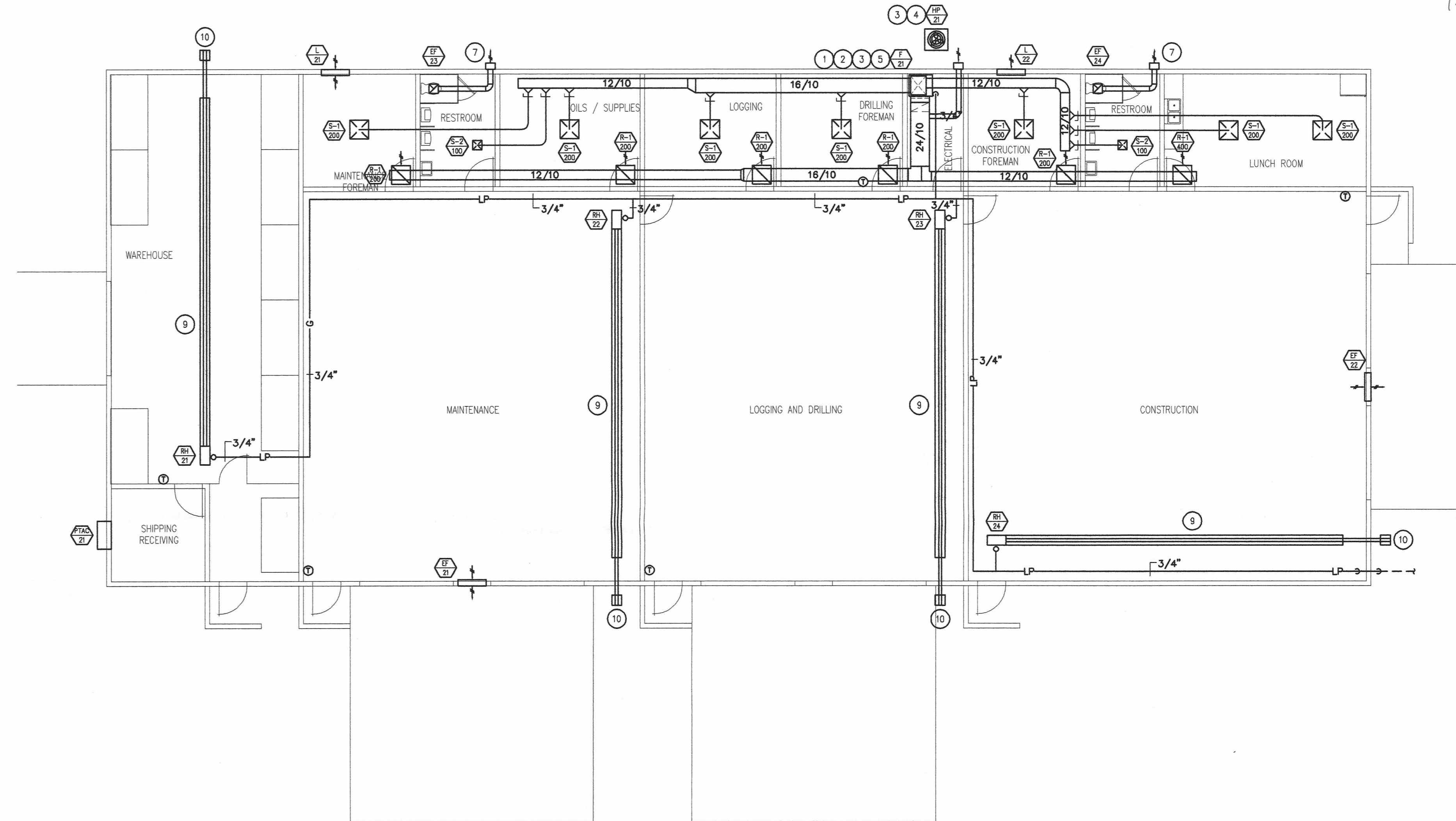


HVAC - SECOND FLOOR PLANT OFFICES
SCALE: 1/8" = 1'-0"



HVAC - FIRST FLOOR PLANT OFFICES
SCALE: 1/8" = 1'-0"



HVAC - SHOP BUILDING
SCALE: 1/8" = 1'-0"

MISCELLANEOUS MECHANICAL NOTES:

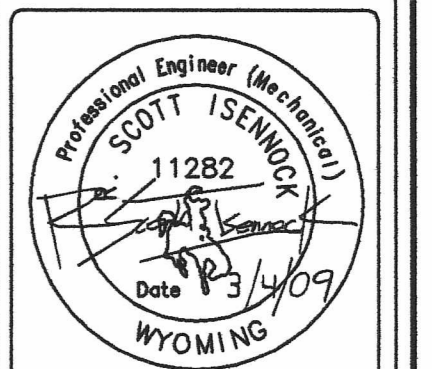
- DO NOT ROUTE DUCT/PIPING ABOVE ELECTRICAL PANELS. MAINTAIN ALL CODE REQUIRED CLEARANCES.
- COORDINATE ALL ROOF AND WALL PENETRATIONS WITH GENERAL CONTRACTOR. SEAL PENETRATIONS WEATHER TIGHT.
- ROUTE DUCTS UP IN JOIST SPACE WHEREVER POSSIBLE. CONTRACTOR SHALL COORDINATE ALL DUCT AND PIPE ROUTING WITH ALL OTHER TRADES. PROVIDE ALL ADDITIONAL OFFSETS AND TRANSITIONS AS REQUIRED TO COMPLETE INSTALLATION.
- LOCATE VOLUME DAMPERS IN ACCESSIBLE LOCATIONS.
- ALL LP GAS PIPING SIZED FOR 2-PSIG. PROVIDE LBS TO OZ GAS PRESSURE REGULATORS FOR ALL APPLIANCES. VENT REGULATORS TO OUTSIDE.

SPECIFIC MECHANICAL NOTES:

- SEE HIGH EFFICIENCY FURNACE DETAIL ON SHEET M3
- PROVIDE PVC INTAKE AND EXHAUST PIPING TO FURNACE. SIZE PER MANUFACTURER'S RECOMMENDATIONS. TERMINATE THROUGH WALL/ROOF WITH CONCENTRIC TERMINATIONS KIT. INSTALL PER MANUFACTURER'S RECOMMENDATIONS. MAINTAIN MIN. 10'-0" CLEAR TO FRESH AIR INTAKES
- PROVIDE REFRIGERATION PIPING FROM COIL TO OUTSIDE HEAT PUMP UNIT. SIZE REFRIGERANT PIPING PER MANUFACTURER'S RECOMMENDATIONS. ROUTE REFRIGERANT PIPING IN JOIST SPACE WHEN PARALLEL TO JOISTS. OTHERWISE ROUTE REFRIGERANT PIPING AS HIGH AS POSSIBLE. ROUTE REFRIGERANT PIPING DOWN IN EXTERIOR WALL TO CONDENSING UNIT.
- PROVIDE 4" CONCRETE EQUIPMENT PAD FOR HEAT PUMP UNIT. PAD SHALL BE 6" LARGER THAN EQUIPMENT ON ALL SIDES.
- ROUTE 8" ROUND O.A. TO INTAKE LOUVER. INSTALL PER MANUFACTURER'S RECOMMENDATIONS.
- ROUTE 6" ROUND E.A. THROUGH ROOF. TERMINATE WITH VENT CAP. INSTALL PER MANUFACTURER'S RECOMMENDATIONS.
- ROUTE 6" ROUND E.A. THROUGH WALL. TERMINATE WITH WALL CAP. INSTALL PER MANUFACTURER'S RECOMMENDATIONS.
- PUMP CONDENSATE TO NEAREST FLOOR DRAIN.
- INSTALL RADIANT HEATER PER MANUFACTURER'S RECOMMENDATIONS. MAINTAIN CLEARANCE TO COMBUSTIBLES. MOUNT AS HIGH AS POSSIBLE. BOTTOM OF HEATER SHALL BE MINIMUM 13'-0" A.F.F. SUPPORT FROM STRUCTURE PER MANUFACTURER'S RECOMMENDATIONS. COORDINATE EXACT LOCATION WITH LIGHTS AND STRUCTURE.
- 4" Ø FLUE THROUGH SIDEWALL. PROVIDE HIGH WIND VENT CAP. INSTALL PER NFPA 54 REQUIREMENTS. SEAL PENETRATION WEATHER TIGHT. COORDINATE PENETRATIONS WITH METAL BUILDING SUPPLIER.
- PROVIDE 4" Ø DRYER VENT TO OWNER FURNISHED DRYER. ROUTE UP THROUGH ROOF. TERMINATE WITH GOOSENECK.
- PROVIDE EXHAUST DUCT FROM OWNER FURNISHED LAB HOOD UP THROUGH ROOF. VERIFY REQUIREMENTS WITH OWNER FURNISHED LAB HOOD.

SHOP / OFFICE FLOOR PLANS - HVAC
 LOST CREEK ISR
 PROCESSING PLANT
 NEAR BAROIL, WYOMING

PROJECT#:	C08028
CADFILE:	C08028 M2
DESIGNED:	JM
DRAWN:	JM
APPROVED:	SI
DATE:	3/4/09



SHEET:
M2
Copyright © 2001

D-02

D-02

WPE
 WEST PLAINS
 ENGINEERING, INC.
 145 SOUTH DURBIN, SUITE 205 • CASPER, WY 82401
 PHONE: (307) 234-8484 • FAX: (307) 234-5494
 www.westplainsengineering.com
 RAPID CITY, SD • SIOUX FALLS, SD • CASPER, WY • CEDAR RAPIDS, IA

THIS DRAWING AND ALL INFORMATION THEREON IS THE PROPERTY OF WEST PLAINS ENGINEERING, INC. AND IS PROTECTED BY LAWS GOVERNING CONFIDENTIALITY AND PATENT OF PRODUCTS. THIS DRAWING IS NOT TO BE USED FOR PURPOSES OTHER THAN THOSE SPECIFICALLY AGREED TO BY WEST PLAINS ENGINEERING, INC.

REVISIONS		
#	DESCRIPTION	DATE
-	-	-
-	-	-
-	-	-