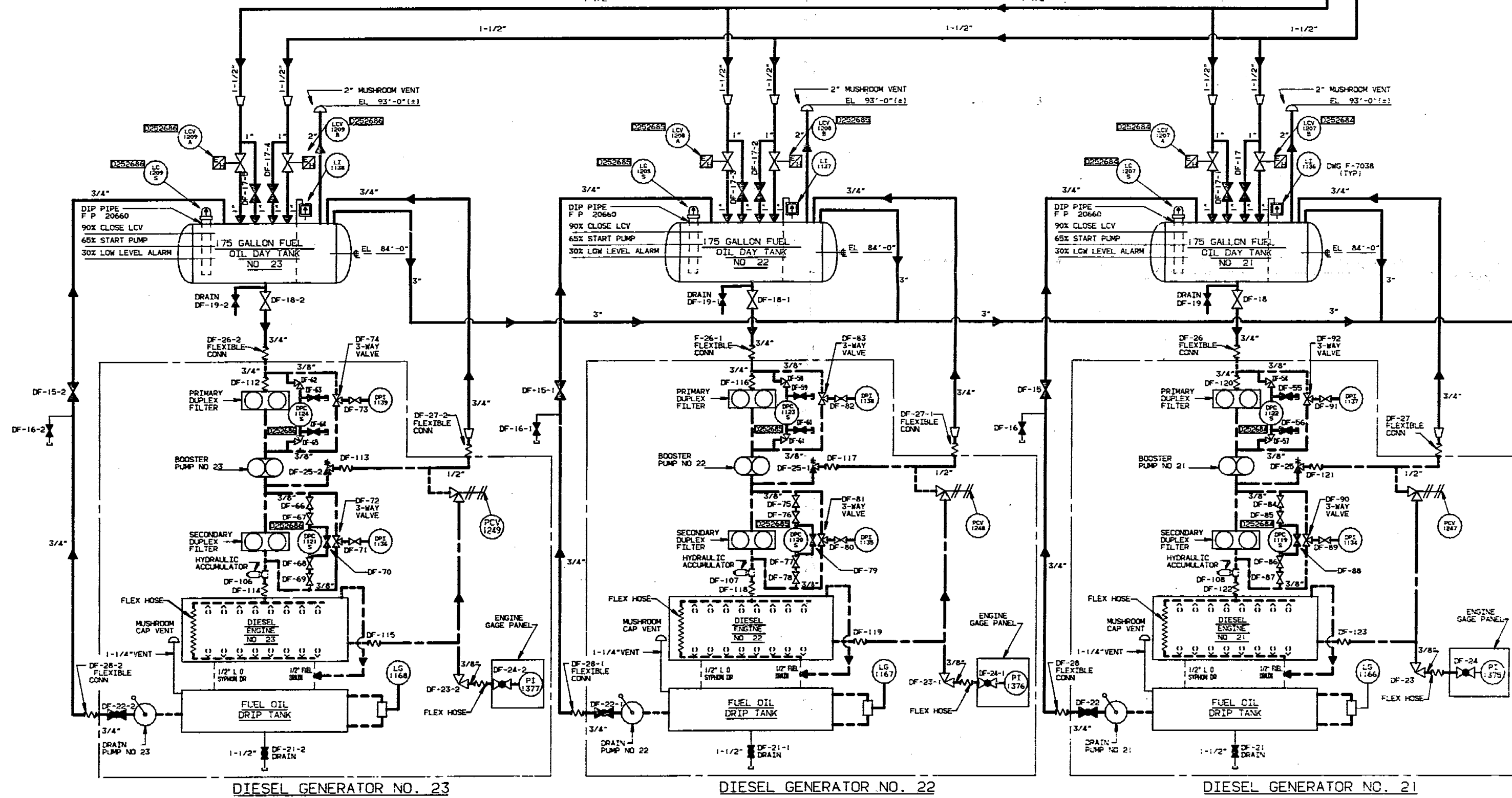
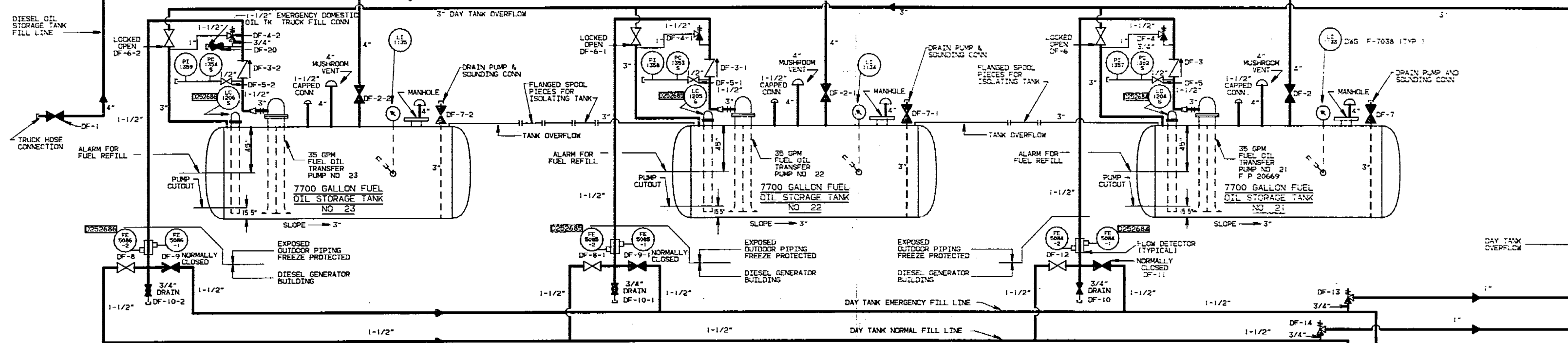


9321-F-2030



NUCLEAR REGULATORY MANAGEMENT CENTER
 For Request, Return, or Replacement of this Drawing
 THIS DRAWING IS VALID ONLY UNTIL

MAR 08 1994

**ANSTEC
 APERTURE
 CARD**

NOTE
 EVERYTHING ON THIS DRAWING IS PART OF THE EMERGENCY DIESEL GENERATOR AUXILIARY SYSTEMS DESIGNED AS PART OF THE EMERGENCY A.C. POWER SYSTEM LISTED IN EXHIBIT A, CI-240-1

THIS DRAWING CHECKING ITEMS WHICH MUST BE CONTROLLED FOR OR CONTROLLED PER CI-240-1
"CLASS A" ITEMS
 PER CI-240-1

REFERENCE DWGS
 9321-C-2016 FLOW DIAGRAM SYMBOLS
 9321-F-2258 FUEL OIL, ST'G AIR & JACKET WTR PIPING
 SHT #1
 9321-F-2259 DIESEL GEN BLDG F.O. STARTING AIR & JACKET WTR PIPING SHT #2
 A206111 REPLACEMENT OF PRESSURE SWITCHES ON SECONDARY FUEL OIL FILTERS- DIESEL GENERATORS #21 & #23

CLASS I PIPING
 WHOLE SYSTEM CLASS I EXCEPT TRUCK LOADING LINE INTO FUEL STORAGE TANKS

NOTE
 REFERENCE TO F.P. 9321-20172 FOR DIESEL GEN'S FLOW DIAGRAM OF FUEL OIL SYSTEM AND F.P. 9321-20364 OUTLINE OF DIESEL GAGE PANEL
 - - - INDICATES PIPING BY UAC
 - - - INDICATES PIPING VALVES INSTRUMENTS, EQUIPMENT ETC SUPPLIED WITH DIESEL
 [Symbol] INDICATES REF. DWG. FOR ADDITIONAL INFORMATION

COMPUTER GENERATED DRAWING NOT TO BE HAND REVISED

DATE	BY	DESIGN	CHKD	APP'D	REV	DATE	BY	DESIGN	CHKD	APP'D	REV
12/22/93	MS										
TITLE: FLOW DIAGRAM FUEL OIL TO DIESEL GENERATORS STATION: INDIAN POINT DWG NO: 9321-F-2030-31 MY											

Docket # 50-247
 Accession # 9402310170
 Date 2/11/94
 Regulatory Docket File