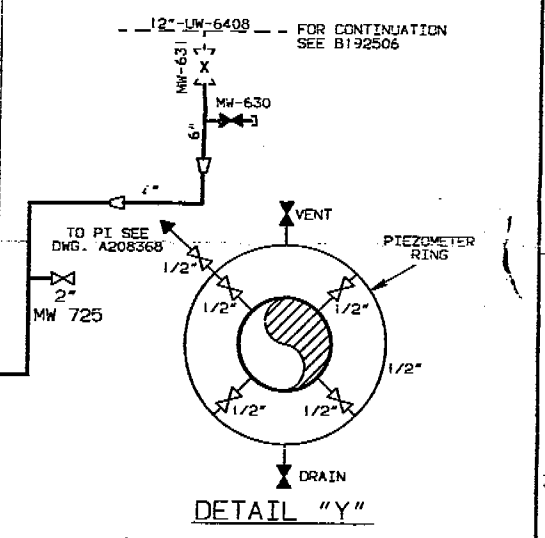


VALVE NO.	SERVICE WATER PUMP
A	SWN-542 SWN-543 SWN-544 SWN-545 SWN-546 SWN-547 SWN-548 SWN-549 SWN-550 SWN-551 SWN-552 SWN-553 SWN-554 SWN-555 SWN-556 SWN-557 SWN-558 SWN-559 SWN-560
B	SWN-542 SWN-543 SWN-544 SWN-545 SWN-546 SWN-547 SWN-548 SWN-549 SWN-550 SWN-551 SWN-552 SWN-553 SWN-554 SWN-555 SWN-556 SWN-557 SWN-558 SWN-559 SWN-560
C	SWN-542 SWN-543 SWN-544 SWN-545 SWN-546 SWN-547 SWN-548 SWN-549 SWN-550 SWN-551 SWN-552 SWN-553 SWN-554 SWN-555 SWN-556 SWN-557 SWN-558 SWN-559 SWN-560
D	SWN-542 SWN-543 SWN-544 SWN-545 SWN-546 SWN-547 SWN-548 SWN-549 SWN-550 SWN-551 SWN-552 SWN-553 SWN-554 SWN-555 SWN-556 SWN-557 SWN-558 SWN-559 SWN-560
E	SWN-542 SWN-543 SWN-544 SWN-545 SWN-546 SWN-547 SWN-548 SWN-549 SWN-550 SWN-551 SWN-552 SWN-553 SWN-554 SWN-555 SWN-556 SWN-557 SWN-558 SWN-559 SWN-560
F	SWN-542 SWN-543 SWN-544 SWN-545 SWN-546 SWN-547 SWN-548 SWN-549 SWN-550 SWN-551 SWN-552 SWN-553 SWN-554 SWN-555 SWN-556 SWN-557 SWN-558 SWN-559 SWN-560
SIGHT GLASS	FI-6015 FI-6017 FI-6018



NUCLEAR RECORDS MANAGEMENT CENTER  
 For Repair, Maintenance or Field Comparison  
 Not For Modification Work  
 THIS REPORT IS VALID UNTIL  
**MAR 08 1994**

ANSTEC  
 APERTURE  
 CARD

WORK THIS DWG. WITH  
 9321-F-2035, 9321-F-2722  
 AND A234191

THIS DRAWING CONTAINS ITEMS WHICH  
 MUST BE CONTROLLED WITHIN CON Edison AS  
**"CLASS A" ITEMS**  
 PER CI-240-1

INTAKE STRUCTURE

COMPUTER GENERATED DRAWING NOT TO BE HAND REVISED

NO.	REV.	DATE	DESCRIPTION
1			REVISED TO PER DWG. A234191
2			REVISED TO PER DWG. A234191
3			REVISED TO PER DWG. A234191
4			REVISED TO PER DWG. A234191

NO.	REV.	DATE	DESCRIPTION
1			REVISED TO PER DWG. A234191
2			REVISED TO PER DWG. A234191
3			REVISED TO PER DWG. A234191
4			REVISED TO PER DWG. A234191

Doc# 20-277  
 Accession # 9403 210172  
 Date 3/1/94  
 Regulatory Docket File