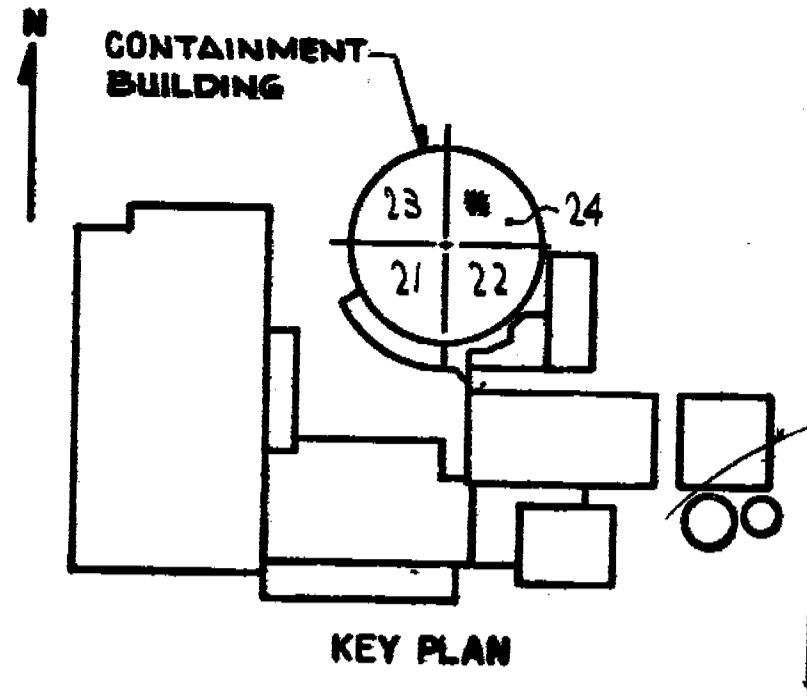
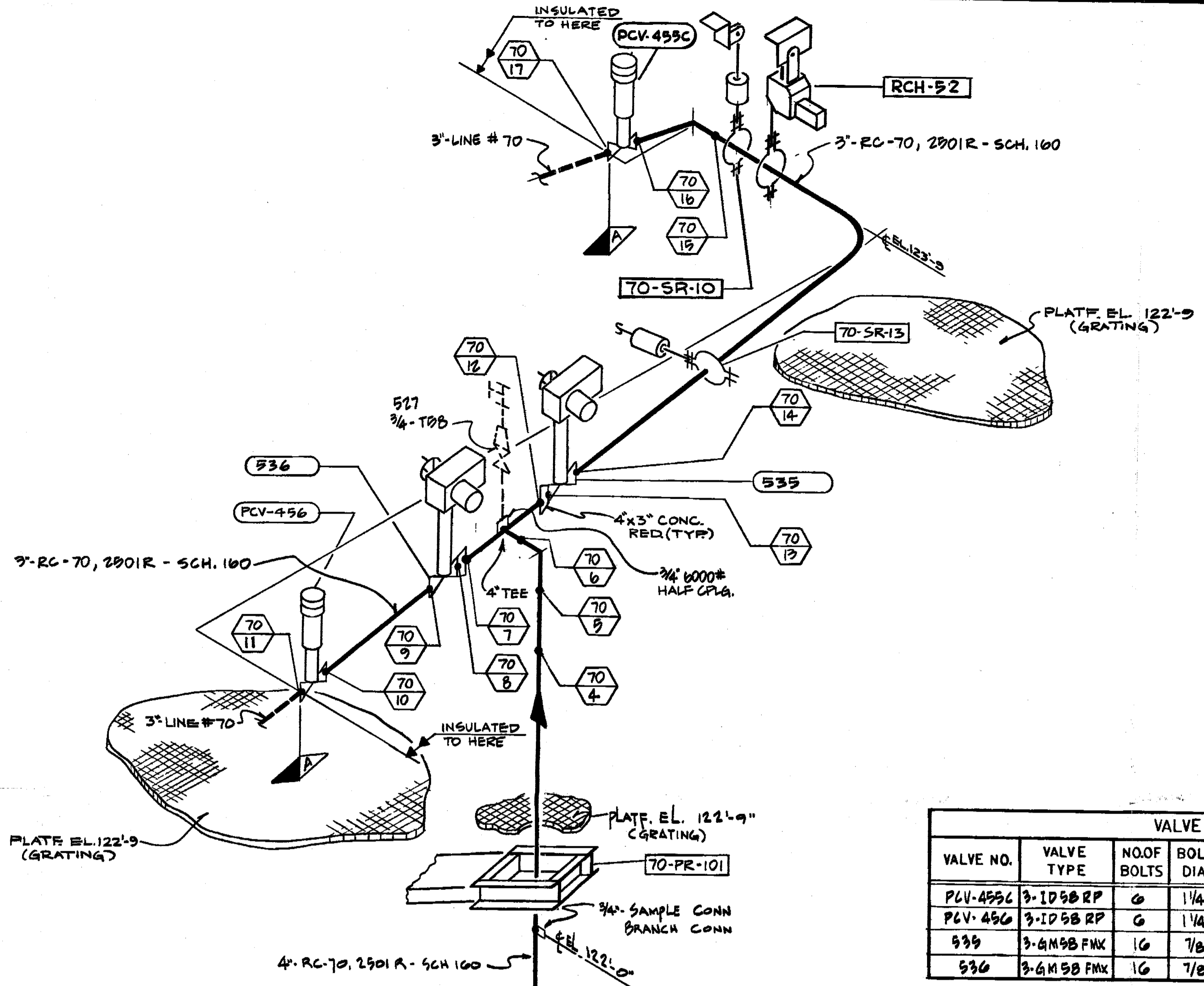
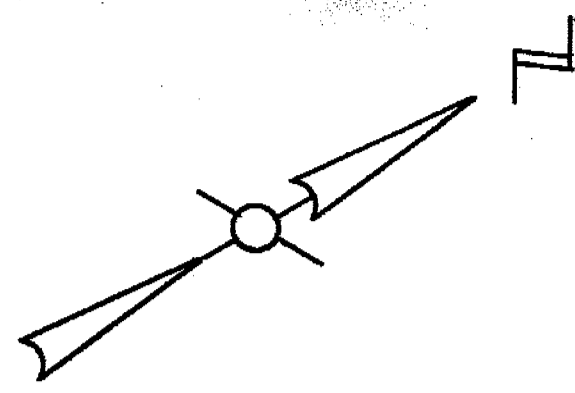


INDIAN POINT #2  
 COOLANT LINE #70  
 ISOMETRIC OF REACTOR  
 INSIDE CONTAINMENT  
 B206712



REVISIONS	
0	THIS ISSUE IS NON-CLASS "A" PER CI-240-1. RELEASE FOR RECORD. P.N. 7076 11-3-78
1	THIS REVISION IS NON-CLASS "A" PER CI-240-1. UPDATED DWG. TO SHOW WORK ON DWG'S. 9321-F-2545, THRU REV. 10, 9321-F-2546, THRU REV. 13 AND A206832, REV. 1. ADDED REF. DRAWING, ADDED LATEST REV. NO. TO REF. DWG'S. RELEASE FOR RECORD. P.N. 7076 TIG/AS EBASCO SERVICES, INC. 1-10-80
2	THIS REVISION IS CLASS "A" PER CI-240-1. UPDATED DWG. PER AS-BUILT INFORMATION AND SERVICE INSPECTION FIELD REVISION INFORMATION. RELEASED FOR RECORD P/N 69982-AD-4 NPS 12/14/93 AAA
3	THIS REVISION IS NON-CLASS "A" PER CI-240-1. CHANGED DISCIPLINE CODE FROM NPT TO MLI. RELEASE FOR RECORD. P.N. 69911-07 AAA

4  
 THIS REVISION IS CLASS "A" PER CI-240-1. UPDATED DWG. PER AS-BUILT INFORMATION AND SERVICE INSPECTION FIELD REVISION INFORMATION. RELEASED FOR RECORD P/N 69982-AD-4 NPS 12/14/93 AAA

NOT FOR FABRICATION OR INSTALLATION

THIS DRAWING CONTAINS ITEMS WHICH MUST BE CONTROLLED WITHIN CON EDISON AS:  
**"CLASS A" ITEMS**  
 PER CI-240-1

VALVE BONNET BOLTING						
VALVE NO.	VALVE TYPE	NO. OF BOLTS	BOLT DIA.	BOLT TYPE	VALVE MANUFACTURER	MANUFACTURER DWG. NO.
PLV-455C	3-ID 58 RP	6	1 1/4"	STUD BOLTS	COPEL - VULCAN	E-181209
PCV-456	3-ID 58 RP	6	1 1/4"	STUD BOLTS	COPEL - VULCAN	E-181209
535	3-6M 58 FMX	16	7/8"	STUD BOLTS	WESTINGHOUSE	D-8372025
536	3-6M 58 FMX	16	7/8"	STUD BOLTS	WESTINGHOUSE	D-8372025

REFERENCE DRAWINGS

- FLOW DIAGRAM REACTOR COOLANT SYSTEM - 9321-F-2738
- CONTAINMENT BUILDING PRIMARY COOLANT PRESSURIZER SAFETY RELIEF VALVE PIPING SHEET NO. 1 - 9321-F-2545
- CONTAINMENT BUILDING PRIMARY COOLANT PRESSURIZER SAFETY RELIEF VALVE PIPING SHEET NO. 2 - 9321-F-2546
- CONTAINMENT BUILDING PRIMARY COOLANT PRESSURIZER POV AND MOV VALVE PIPING MODIFICATION - A206832

SYMBOL IDENTIFICATION

- SUPPORT NUMBER
- VALVE NUMBER
- WELD NUMBER CIRCUMFERENTIAL PIPE WELD
- QUALITY GROUP CLASSIFICATION
- INTEGRAL SUPPORT WELD NUMBER

TYPICAL WELD DETAIL DRAWINGS  
 4" CLASS 2501, SCH. 100 - D208008  
 3" CLASS 2501, SCH. 160 - D208005

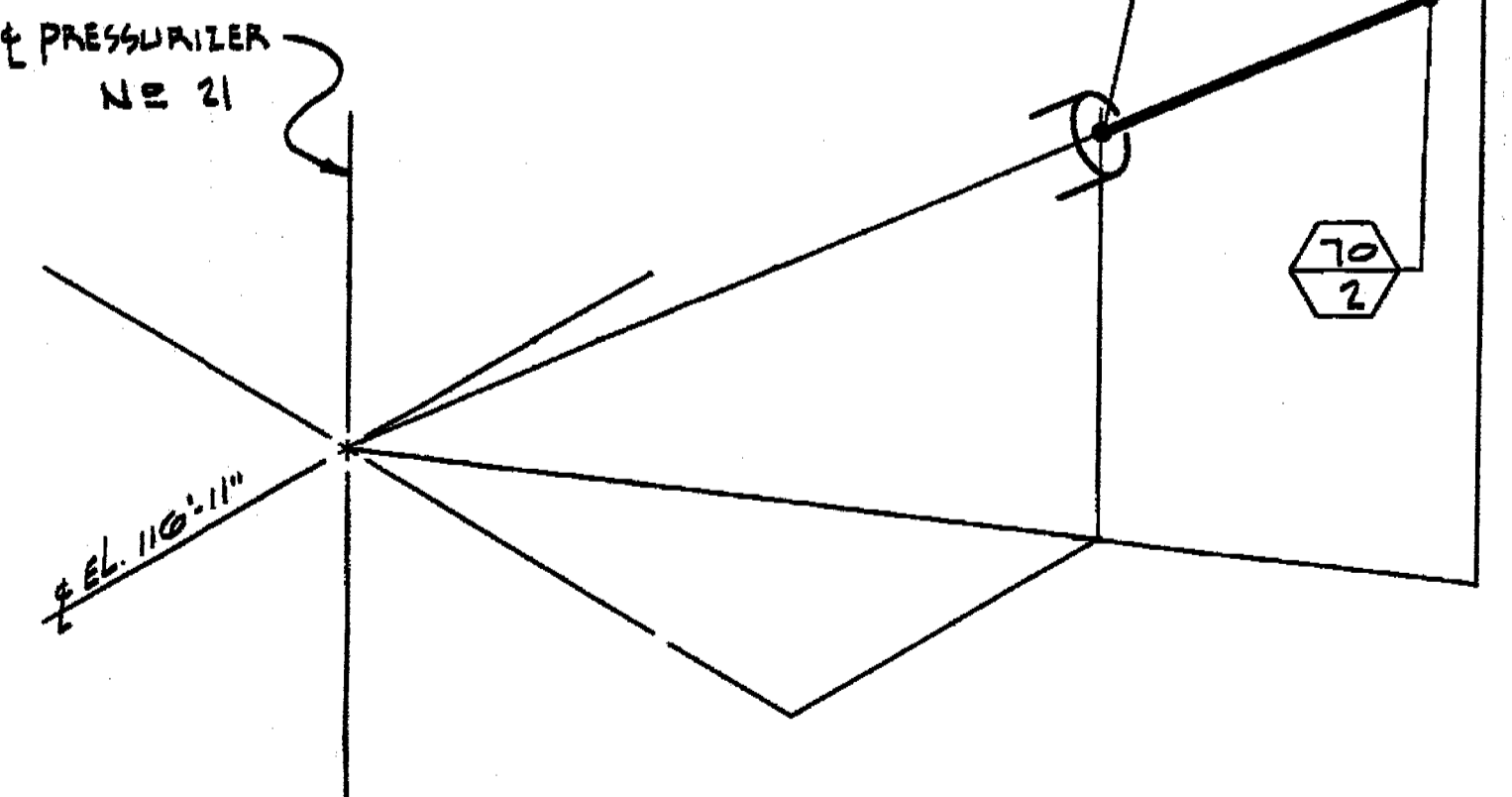
ANGLED APERTURE CAP



GENERAL NOTES

- WELDS LESS THAN 2 1/2" NOM. PIPE DIA. SOCKET WELDED; 2 1/2" AND LARGER - BUTT WELDED
- WELDS IN QUALITY GROUP A PIPING, ONE INCH NOM. PIPE DIA. OR LESS, EXEMPT FROM NPT REQUIREMENTS PER IWB-1220 (b).
- 3/4" INDICATES REMOVABLE INSULATION

PRESSURIZER NO. 21



NOT FOR FABRICATION OR INSTALLATION

**B206712-4**  
**CONSOLIDATED EDISON CO.**  
 OF NEW YORK, INC.

STATION LOCATION	INDIAN POINT #2
INSERVICE INSPECTION	
ISOMETRIC OF REACTOR COOLANT LINE #70 - INSIDE CONTAINMENT	
DOCKET #	10-247
Accession #	990-210-117
Date	2/23/94
Regulatory Docket File	
ROLE	NONE
DESIGNED BY	P. DENE
CHECKED BY	E. BLACKBURN
DATE	02/23/94
DESIGNED BY	
CHECKED BY	
DATE	
GENERAL ENGINEERING	CHIEF DESIGNER
Mechanical Engineering	MECHANICAL ENGINEER
CIVIL ENGINEERING	PLANT STRUCTURE ENGINEER
ELECTRICAL ENGINEERING	T & B STRUCTURE ENGINEER
OPERATIONS	STATION ELECTRICIAN
PRODUCTION	CONVENTIONAL POWER
	NUCLEAR POWER