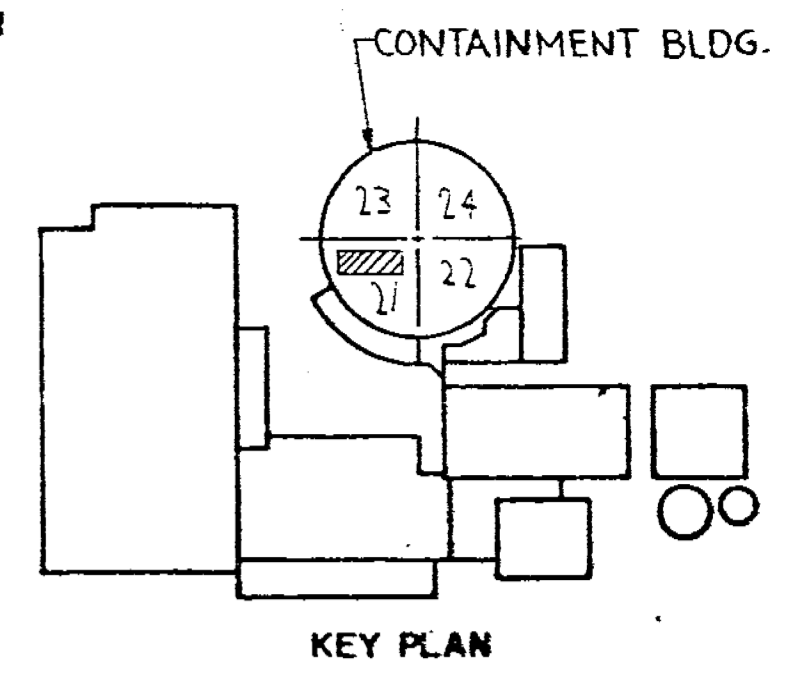
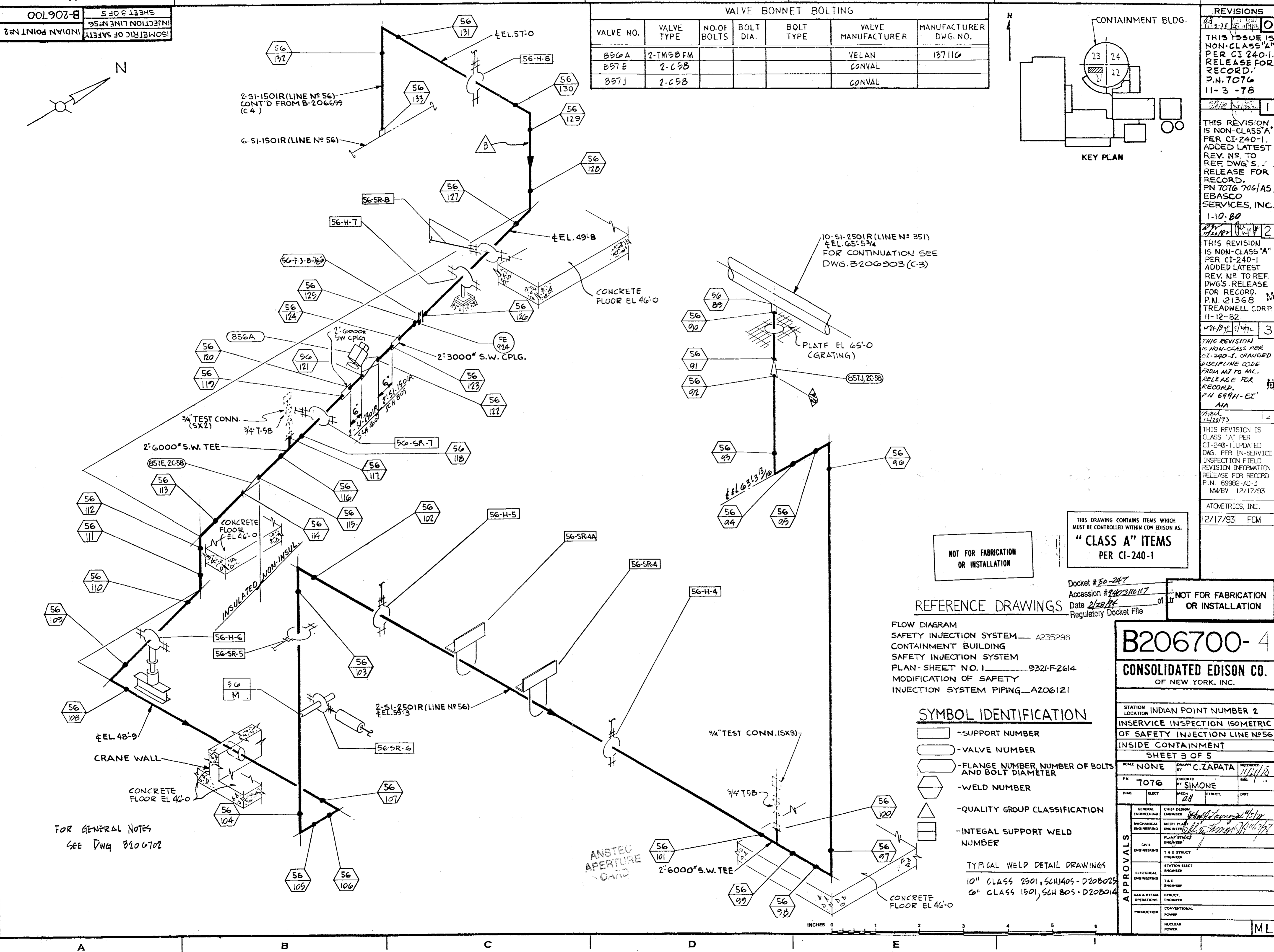


VALVE BONNET BOLTING						
VALVE NO.	VALVE TYPE	NO. OF BOLTS	BOLT DIA.	BOLT TYPE	VALVE MANUFACTURER	MANUFACTURER DWG. NO.
856A	2-TM58 FM				VELAN	137110
857E	2-C58				CONVAL	
857J	2-C58				CONVAL	



REVISIONS	
01	11-3-78
02	11-3-78
03	11-3-78
04	11-3-78
05	11-3-78
06	11-3-78
07	11-3-78
08	11-3-78
09	11-3-78
10	11-3-78
11	11-3-78
12	11-3-78
13	11-3-78
14	11-3-78
15	11-3-78
16	11-3-78
17	11-3-78
18	11-3-78
19	11-3-78
20	11-3-78
21	11-3-78
22	11-3-78
23	11-3-78
24	11-3-78
25	11-3-78
26	11-3-78
27	11-3-78
28	11-3-78
29	11-3-78
30	11-3-78
31	11-3-78
32	11-3-78
33	11-3-78
34	11-3-78
35	11-3-78
36	11-3-78
37	11-3-78
38	11-3-78
39	11-3-78
40	11-3-78
41	11-3-78
42	11-3-78
43	11-3-78
44	11-3-78
45	11-3-78
46	11-3-78
47	11-3-78
48	11-3-78
49	11-3-78
50	11-3-78
51	11-3-78
52	11-3-78
53	11-3-78
54	11-3-78
55	11-3-78
56	11-3-78
57	11-3-78
58	11-3-78
59	11-3-78
60	11-3-78
61	11-3-78
62	11-3-78
63	11-3-78
64	11-3-78
65	11-3-78
66	11-3-78
67	11-3-78
68	11-3-78
69	11-3-78
70	11-3-78
71	11-3-78
72	11-3-78
73	11-3-78
74	11-3-78
75	11-3-78
76	11-3-78
77	11-3-78
78	11-3-78
79	11-3-78
80	11-3-78
81	11-3-78
82	11-3-78
83	11-3-78
84	11-3-78
85	11-3-78
86	11-3-78
87	11-3-78
88	11-3-78
89	11-3-78
90	11-3-78
91	11-3-78
92	11-3-78
93	11-3-78
94	11-3-78
95	11-3-78
96	11-3-78
97	11-3-78
98	11-3-78
99	11-3-78
100	11-3-78
101	11-3-78
102	11-3-78
103	11-3-78
104	11-3-78
105	11-3-78
106	11-3-78
107	11-3-78
108	11-3-78
109	11-3-78
110	11-3-78
111	11-3-78
112	11-3-78
113	11-3-78
114	11-3-78
115	11-3-78
116	11-3-78
117	11-3-78
118	11-3-78
119	11-3-78
120	11-3-78
121	11-3-78
122	11-3-78
123	11-3-78
124	11-3-78
125	11-3-78
126	11-3-78
127	11-3-78
128	11-3-78
129	11-3-78
130	11-3-78
131	11-3-78
132	11-3-78
133	11-3-78
134	11-3-78
135	11-3-78
136	11-3-78
137	11-3-78
138	11-3-78
139	11-3-78
140	11-3-78
141	11-3-78
142	11-3-78
143	11-3-78
144	11-3-78
145	11-3-78
146	11-3-78
147	11-3-78
148	11-3-78
149	11-3-78
150	11-3-78
151	11-3-78
152	11-3-78
153	11-3-78
154	11-3-78
155	11-3-78
156	11-3-78
157	11-3-78
158	11-3-78
159	11-3-78
160	11-3-78
161	11-3-78
162	11-3-78
163	11-3-78
164	11-3-78
165	11-3-78
166	11-3-78
167	11-3-78
168	11-3-78
169	11-3-78
170	11-3-78
171	11-3-78
172	11-3-78
173	11-3-78
174	11-3-78
175	11-3-78
176	11-3-78
177	11-3-78
178	11-3-78
179	11-3-78
180	11-3-78
181	11-3-78
182	11-3-78
183	11-3-78
184	11-3-78
185	11-3-78
186	11-3-78
187	11-3-78
188	11-3-78
189	11-3-78
190	11-3-78
191	11-3-78
192	11-3-78
193	11-3-78
194	11-3-78
195	11-3-78
196	11-3-78
197	11-3-78
198	11-3-78
199	11-3-78
200	11-3-78



FOR GENERAL NOTES SEE DWG B206702

NOT FOR FABRICATION OR INSTALLATION

THIS DRAWING CONTAINS ITEMS WHICH MUST BE CONTROLLED WITHIN CON EDISON AS: "CLASS A" ITEMS PER CI-240-1

REFERENCE DRAWINGS

FLOW DIAGRAM SAFETY INJECTION SYSTEM A235296
 CONTAINMENT BUILDING SAFETY INJECTION SYSTEM PLAN-SHEET NO. 1 9321-F2614
 MODIFICATION OF SAFETY INJECTION SYSTEM PIPING AZ06121

SYMBOL IDENTIFICATION

- - SUPPORT NUMBER
- - VALVE NUMBER
- ⬡ - FLANGE NUMBER NUMBER OF BOLTS AND BOLT DIAMETER
- ⬢ - WELD NUMBER
- △ - QUALITY GROUP CLASSIFICATION
- ▭ - INTEGRAL SUPPORT WELD NUMBER

TYPICAL WELD DETAIL DRAWINGS
 10" CLASS 2501, SCH140S-D20B025
 6" CLASS 1501, SCH 80S-D20B014



Docket # 50-247
 Accession # 947310117
 Date 2/28/94
 Regulatory Docket File

NOT FOR FABRICATION OR INSTALLATION

B206700-4
CONSOLIDATED EDISON CO.
 OF NEW YORK, INC.

STATION LOCATION INDIAN POINT NUMBER 2	
INSERVICE INSPECTION ISOMETRIC OF SAFETY INJECTION LINE N° 56	
INSIDE CONTAINMENT	
SHEET 3 OF 5	
SCALE NONE	DRAWN BY C.ZAPATA
P.N. 7076	CHECKED BY SIMONE
DIAG. ELECT. MECH. 24	STRUCT. DIST.
GENERAL ENGINEERING	CHIEF DESIGN ENGINEER
MECHANICAL ENGINEERING	MECH. PLAN ENGINEER
CIVIL ENGINEERING	PLANT STRUCTURE ENGINEER
ELECTRICAL ENGINEERING	STATION ELECT. ENGINEER
GAS & STEAM OPERATIONS	STRUCT. ENGINEER
PRODUCTION	CONVENTIONAL POWER
	NUCLEAR POWER

ML