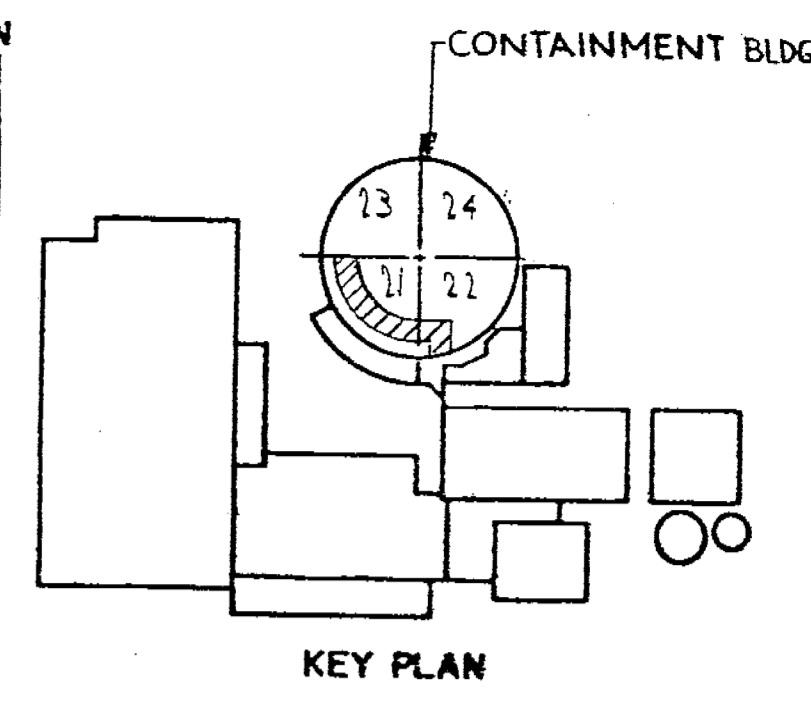


FOR CONTINUATION SEE B-206701 (B-1)  
 FOR CONTINUATION SEE B-206700 (B-4)  
 2'-51-1501R (LINE No 56)  
 2'-3000" S.W. CPLG.  
 2'-6000" S.W. H. CPLG.  
 2'-51-1501R (LINE No 56)  
 FOR CONTINUATION SEE B-206702 (A-1)

FOR CONTINUATION SEE THIS DRAWING (A-2)



REVISIONS	
0	THIS ISSUE IS NON-CLASS 'A' PER CI 240-1. RELEASE FOR RECORD. P.N. 7076 11-3-78
1	THIS REVISION IS NON-CLASS 'A' PER CI-240-1 ADDED REF. DRAWING. ADDED LATEST REV. No TO REF. DWG'S. RELEASE FOR RECORD. PN7076 706/AS EBASCO SERVICES, INC. 1-10-80
2	THIS REV. IS NON CLASS 'A' PER CI-240-1. UPDATED DWG AS PER RESPONSE TO IE BULLETIN 79-14 AS CONSTRUCTED. RELEASE FOR RECORD. EL 90051 TREADWELL CORP. JC./SB
3	ADDED LATEST REV. No TO REF DWG'S. RELEASE FOR RECORD. PN 21368. TREADWELL CORP. 11-12-82.
4	THIS REVISION IS CLASS 'A' AS PER CI-240-1. UPDATED DWG PER IN-SERVICE INSPECTION FIELD REVISION INFORMATION RELEASED FOR RECORD P.N. 69982-AD-3 JMB/V 12/17/93 ATOMETRICS INC. 12/17/93 FOM
5	THIS REVISION IS NON-CLASS PER CI-240-1. CHANGED DISCIPLINE CODE FROM MT TO ML. RELEASE FOR RECORD. P.N. 69911-8Z. AM

THIS DRAWING CONTAINS ITEMS WHICH MUST BE CONTROLLED WITHIN CON EDISON AS:  
**"CLASS A" ITEMS**  
 PER CI-240-1

NOT FOR FABRICATION OR INSTALLATION

**B206699-4**  
**CONSOLIDATED EDISON CO.**  
 OF NEW YORK, INC.

STATION LOCATION INDIAN POINT NUMBER 2  
 INSERVICE INSPECTION ISOMETRIC OF SAFETY INJECTION LINE No 56  
 INSIDE CONTAINMENT  
 SHEET 2 OF 5

SCALE NONE DRAWN BY C.ZAPATA RECORDED BY [Signature]  
 P.N. 7076 CHECKED BY SIMONE ENR. [Signature]

APPROVALS	
GENERAL ENGINEERING	CHIEF DESIGN ENGINEER [Signature]
MECHANICAL ENGINEERING	MECH. PLANT ENGINEER [Signature]
CIVIL ENGINEERING	PLANT STRUCTURE ENGINEER [Signature]
ELECTRICAL ENGINEERING	T & D STRUCTURE ENGINEER [Signature]
AS & STEAM OPERATIONS	STATION ELECTRIC ENGINEER [Signature]
PRODUCTION	T & D ENGINEER [Signature]
	STRUCTURE ENGINEER [Signature]
	CONVENTIONAL POWER [Signature]
	NUCLEAR POWER [Signature]

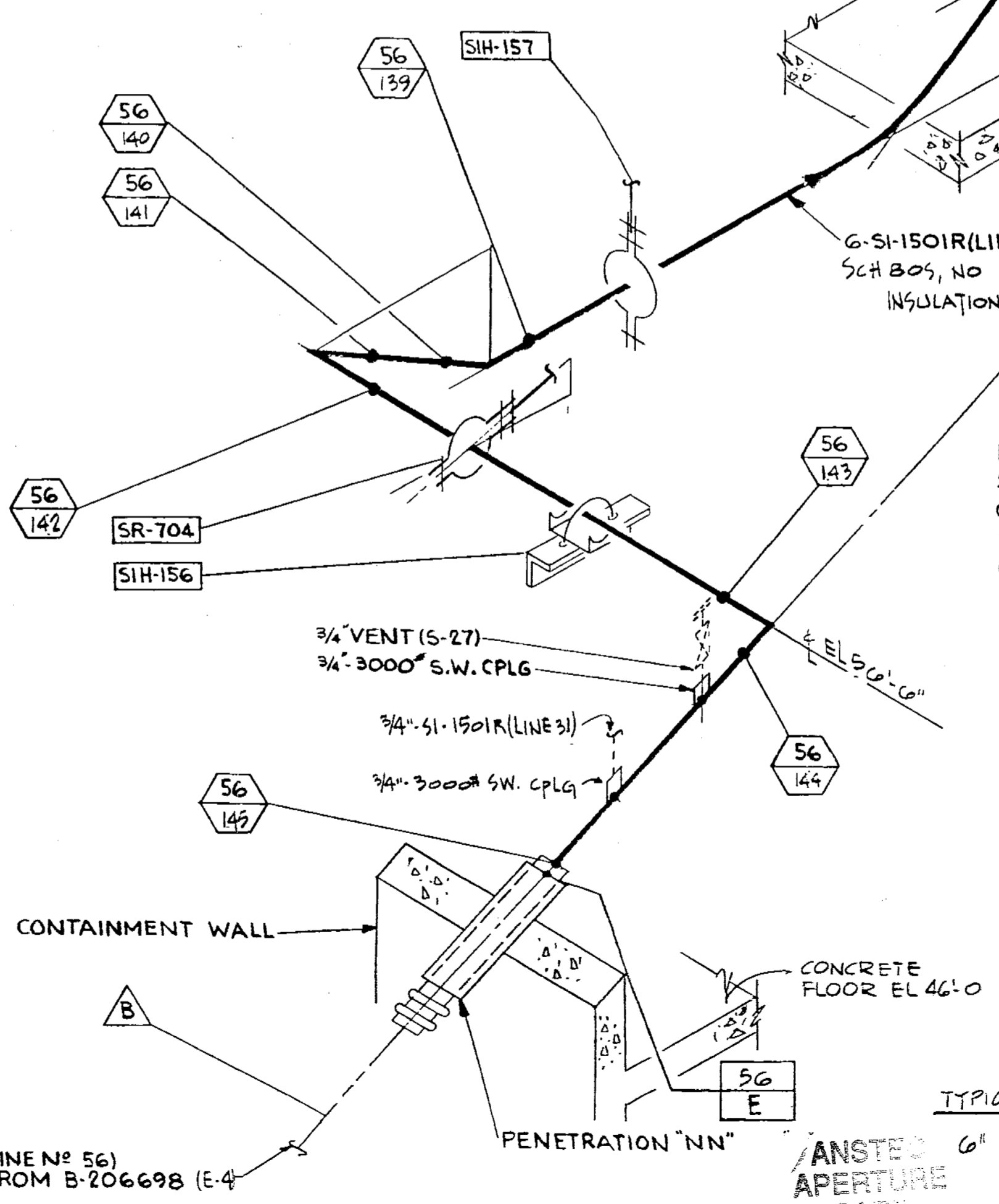
**REFERENCE DRAWINGS**

- FLOW DIAGRAM SAFETY INJECTION SYSTEM \_A235296
- CONTAINMENT BUILDING SAFETY INJECTION SYSTEM PLAN SHEET NO. 1 9321-F-2614
- CONTAINMENT BUILDING SAFETY INJECTION SYSTEM SECTIONS-SHEET NO. 1 9321-F-2615

**SYMBOL IDENTIFICATION**

- [Square] - SUPPORT NUMBER
- [Hexagon] - WELD NUMBER
- [Triangle] - QUALITY GROUP CLASSIFICATION
- [Double Line] INTEGRAL SUPPORT WELD NUMBER

**TYPICAL WELD DETAIL DRAWINGS**



6" CLASS 1501, SCH 80S - D20B014  
 ANSTEEL APERTURE CAP

NOT FOR FABRICATION OR INSTALLATION

FOR GENERAL NOTES SEE DWG 3206702

