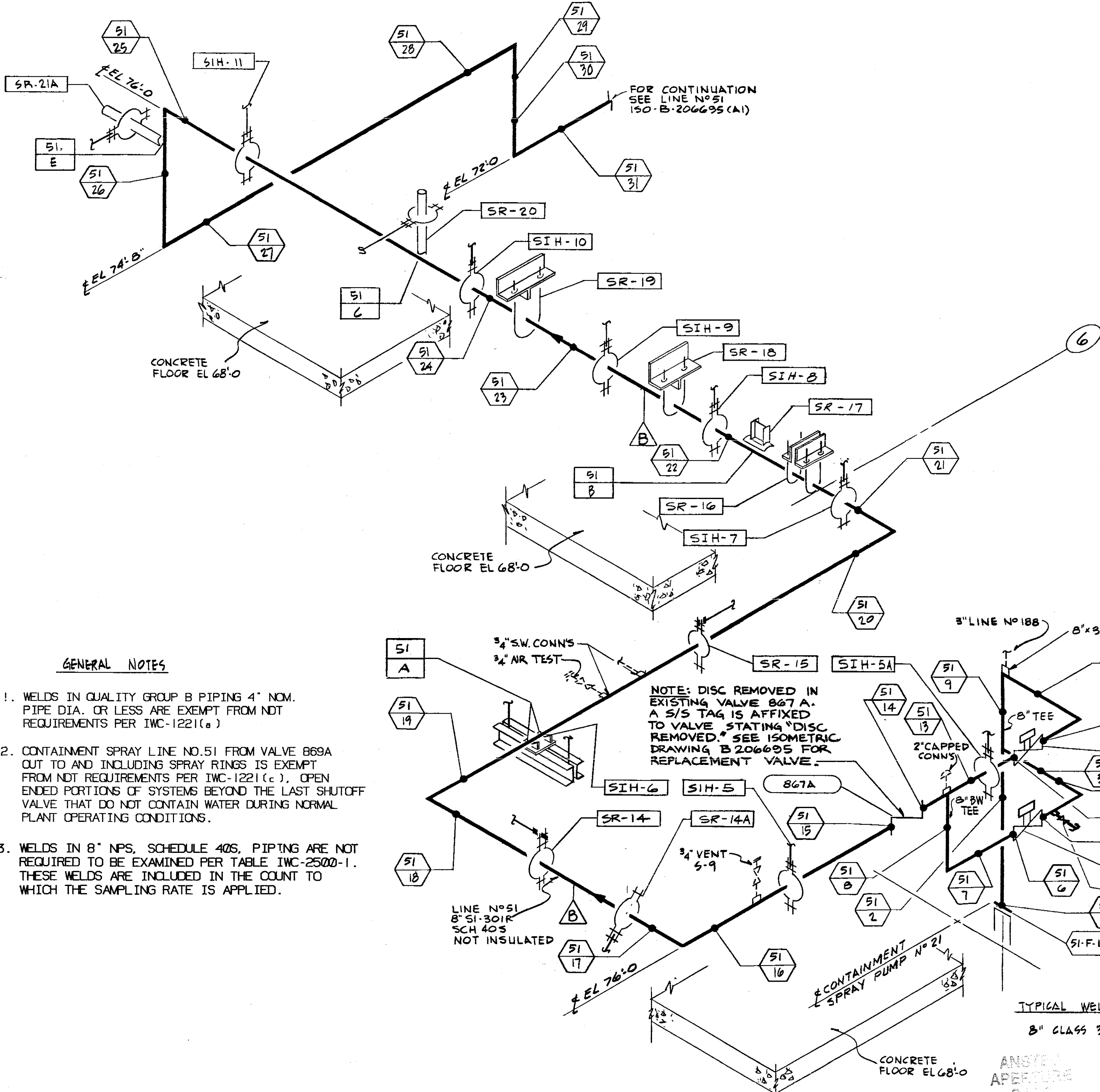


REVISIONS	
4	THIS ISSUE IS NON-CLASS "A" PER CI-240-1. RELEASE FOR RECORD. P.N. 7076 11-3-78.
5	THIS REVISION IS NON-CLASS "A" PER CI-240-1. UPDATED DWG. TO SHOW WORK ON DWG. 9321-F-2570, THRU REV. 4-4. ADDED REF. DWG. ADDED LATEST REV. NO. TO REF. DWG'S. RELEASE FOR RECORD. P.N. 7076 7/6/AS EBASCO SERVICES, INC. 1-10-80.
2	THIS REVISION IS NON-CLASS "A" PER CI-240-1. ADDED LATEST REV. NO. TO REF. DWG'S. REMOVED SR-21 & SR-21B. RELEASE FOR RECORD. P.N. 2136B TREADWELL CORP. 11-17-82.
3	THIS REV. IS CLASS "A" PER CI-240-1. UPDATED DWG. PER "AS FOUND" CONDITION PKG. 3524. RELEASE AS CONSTRUCTED. P.N. 69911 CI. M.M. ED.
4	THIS REV. IS NON-CLASS PER CI-240-1. CHANGED DISC. CODE FROM MJ TO ML. REL. FOR RECORD. P/N 69911-EI



FOR CONTINUATION SEE LINE NO 51 150-B-206695 (A1)

NOT FOR FABRICATION OR INSTALLATION

THIS DRAWING CONTAINS ITEMS WHICH MUST BE CONTROLLED WITHIN CON EDISON AS:
"CLASS A" ITEMS
PER CI-240-1

VALVE BONNET BOLTING						
VALVE NO.	VALVE TYPE	NO. OF BOLTS	BOLT DIA.	BOLT TYPE	VALVE MANUFACTURER	MANUFACTURER DWG. NO.
866A	B-VM54	20	3/4"	STUD BOLTS	ALOTCO	D 43539
866B	B-VM54	20	3/4"	STUD BOLTS	ALOTCO	D 43539
867A	B-C54				ALOTCO	D 43495

GENERAL NOTES

1. WELDS IN QUALITY GROUP B PIPING 4" NOM. PIPE DIA. OR LESS ARE EXEMPT FROM NDT REQUIREMENTS PER IWC-1221(c)
2. CONTAINMENT SPRAY LINE NO. 51 FROM VALVE 869A OUT TO AND INCLUDING SPRAY RINGS IS EXEMPT FROM NDT REQUIREMENTS PER IWC-1221(c). OPEN ENDED PORTIONS OF SYSTEMS BEYOND THE LAST SHUTOFF VALVE THAT DO NOT CONTAIN WATER DURING NORMAL PLANT OPERATING CONDITIONS.
3. WELDS IN 8" NPS, SCHEDULE 40S, PIPING ARE NOT REQUIRED TO BE EXAMINED PER TABLE IWC-2500-1. THESE WELDS ARE INCLUDED IN THE COUNT TO WHICH THE SAMPLING RATE IS APPLIED.

NOTE: DISC REMOVED IN EXISTING VALVE 867A. A S/S TAG IS AFFIXED TO VALVE STATING "DISC REMOVED." SEE ISOMETRIC DRAWING B 206695 FOR REPLACEMENT VALVE.

REFERENCE DRAWINGS

- FLOW DIAGRAM SAFETY INJECTION SYSTEM 9321-F-2735
- PRIMARY AUXILIARY BUILDING COMPOSITE PIPING ARRANGEMENT PLAN AT EL. 68'-0" 9321-F-2570
- PRIMARY AUXILIARY BUILDING COMPOSITE PIPING ARRANGEMENT SECTIONS - SHEET NR. 1 9321-F-2586

SYMBOL IDENTIFICATION

- SUPPORT NUMBER
- VALVE NUMBER
- FLANGE NUMBER, NUMBER OF BOLTS AND BOLT DIAMETER
- WELD NUMBER
- QUALITY GROUP CLASSIFICATION
- INTEGRAL SUPPORT WELD NUMBER

TYPICAL WELD DETAIL DRAWINGS
8" CLASS 301, SCH 40S - D208018

NOT FOR FABRICATION OR INSTALLATION

B206694-5
CONSOLIDATED EDISON CO.
OF NEW YORK, INC.

STATION LOCATION	INDIAN POINT No 2
INSERVICE INSPECTION ISOMETRIC OF SAFETY INJECTION LINE NO 51	
OUTSIDE CONTAINMENT	
SHT NR 1 OF 4 (CONTAINMENT SPRAY)	
SCALE	NONE
DRAWN BY	W. ANDRUSHKO
CHECKED BY	R. BROOKS
P.N.	7076
DATE	11-3-78
DESIGN	
SELECT	
MECH	
STRUCT	
DRY	
GENERAL ENGINEERING	CHIEF DESIGNER
MECHANICAL ENGINEERING	MECH. PIPING ENGINEER
CIVIL ENGINEERING	PLANT STRUCT. ENGINEER
ELECTRICAL ENGINEERING	T & D STRUCT. ENGINEER
GAS & STEAM OPERATIONS	STATION ELECT. ENGINEER
PRODUCTION	T & D ENGINEER
	STRUCT. ENGINEER
	CONVENTIONAL POWER
	NUCLEAR POWER

Docket # 20-287
Accession # 7442310.17
Date 2/23/89
Regulatory Docket File