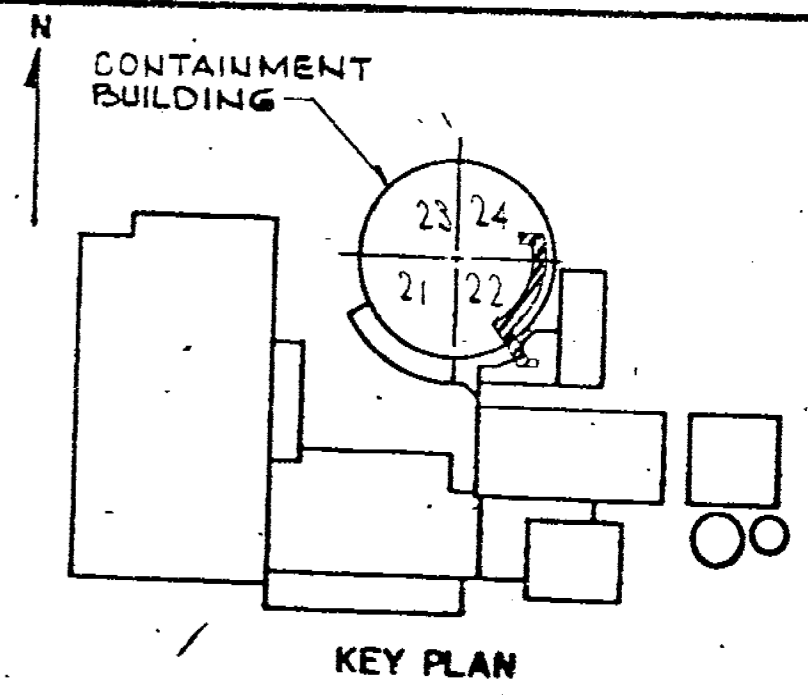


7-MML 12/28/93
 THIS REVISION IS CLASS "A" AS PER CI-240-1.
 UPDATED DWG AS PER IN-SERVICE INSPECTION
 FIELD REVISION INFORMATION
 RELEASED FOR RECORD
 P.N. 69982-AD-3 JM/BV 12/17/93
 ATOMETRICS INC.
 12/17/93 FCM



REVISIONS

NO.	DATE	DESCRIPTION
1	11-3-78	THIS ISSUE IS NON-CLASS "A" PER CI 240-1. RELEASE FOR RECORD. P.N. 7076
2	1-10-80	ADDED LATEST REV. NO TO REF DWG'S. RELEASE FOR RECORD. P.N. 7076 X06/AS
3	11-12-82	ADDED LATEST REV. NO TO REF DWG'S. RELEASE FOR RECORD. P.N. 21368.
4	5-1-84	ADDED CONT. OF LINE 44 OUTSIDE CONTAINMENT TO CONNECTION WITH LINE NO. 41. P.N. 21368; TREADWELL CORP C.S./P.H. 2-4-83
5	12-17-93	UPDATED DWG. TO SHOW WORK OF MOD. PROC. MMS-BO-2-05 RELEASE AS CONSTRUCTED. P.N. 90049.50 R.M./F.A. 4/29/85

2" LINE # 44
 CONT ON DWG
 B 206693 (D-1)

VALVE BONNET BOLTING

VALVE NO.	VALVE TYPE	NO. OF BOLTS	BOLT DIA.	BOLT TYPE	VALVE MANUFACTURER	MANUFACTURER DWG. NO.
251H	2-C58	NONE	N.A.	N.A.	ROCKWELL-EDWARDS	C-70819

THIS REVISION IS NON-CLASS "A" PER CI-240-1. ADDED LATEST REV. NO TO REF DWG'S. RELEASE FOR RECORD. P.N. 7076 X06/AS EBASCO SERVICES, INC. 1-10-80

THIS REVISION IS NON-CLASS "A" PER CI-240-1. ADDED LATEST REV. NO TO REF DWG'S. RELEASE FOR RECORD. P.N. 21368. TREADWELL CORP 11-12-82

THIS REVISION IS NON-CLASS "A" PER CI-240-1. ADDED CONT. OF LINE 44 OUTSIDE CONTAINMENT TO CONNECTION WITH LINE NO. 41. P.N. 21368; TREADWELL CORP C.S./P.H. 2-4-83

THIS REVISION IS NON-CLASS "A" PER CI-240-1. UPDATED DWG. FROM FIELD INFORMATION. RELEASE FOR RECORD. P.N. 21368 W6/RC. 5-1-84

THIS DRAWING CONTAINS ITEMS WHICH MUST BE CONTROLLED WITHIN CON EDISON AS:
"CLASS A" ITEMS
 PER CI-240-1

NOT FOR FABRICATION OR INSTALLATION

NOT FOR FABRICATION OR INSTALLATION

REFERENCE DRAWINGS

- FLOW DIAGRAM CHEMICAL & VOLUME CONTROL SYSTEM - SHEET NO. 1 A208168
- CONTAINMENT BUILDING CHEMICAL & VOLUME CONTROL SYSTEM - SHEET NO. 1 9321-F-2581
- CONTAINMENT BUILDING CHEMICAL & VOLUME CONTROL SYSTEM - SHEET NO. 2 9321-F-2582
- COMPOSITE PIPING IN TRENCHES SHEET NO. 2 9321-F-2678

SYMBOL IDENTIFICATION

- Support NUMBER
- VALVE NUMBER
- WELD NUMBER
- QUALITY GROUP CLASSIFICATION
- INTEGRAL SUPPORT WELD NUMBER
- FLANGE NO. NUMBER OF BOLTS AND BOLT DIAMETER

Docket # 10-247
 Accession # 990310117
 Date 2/29/94
 Regulatory Docket File

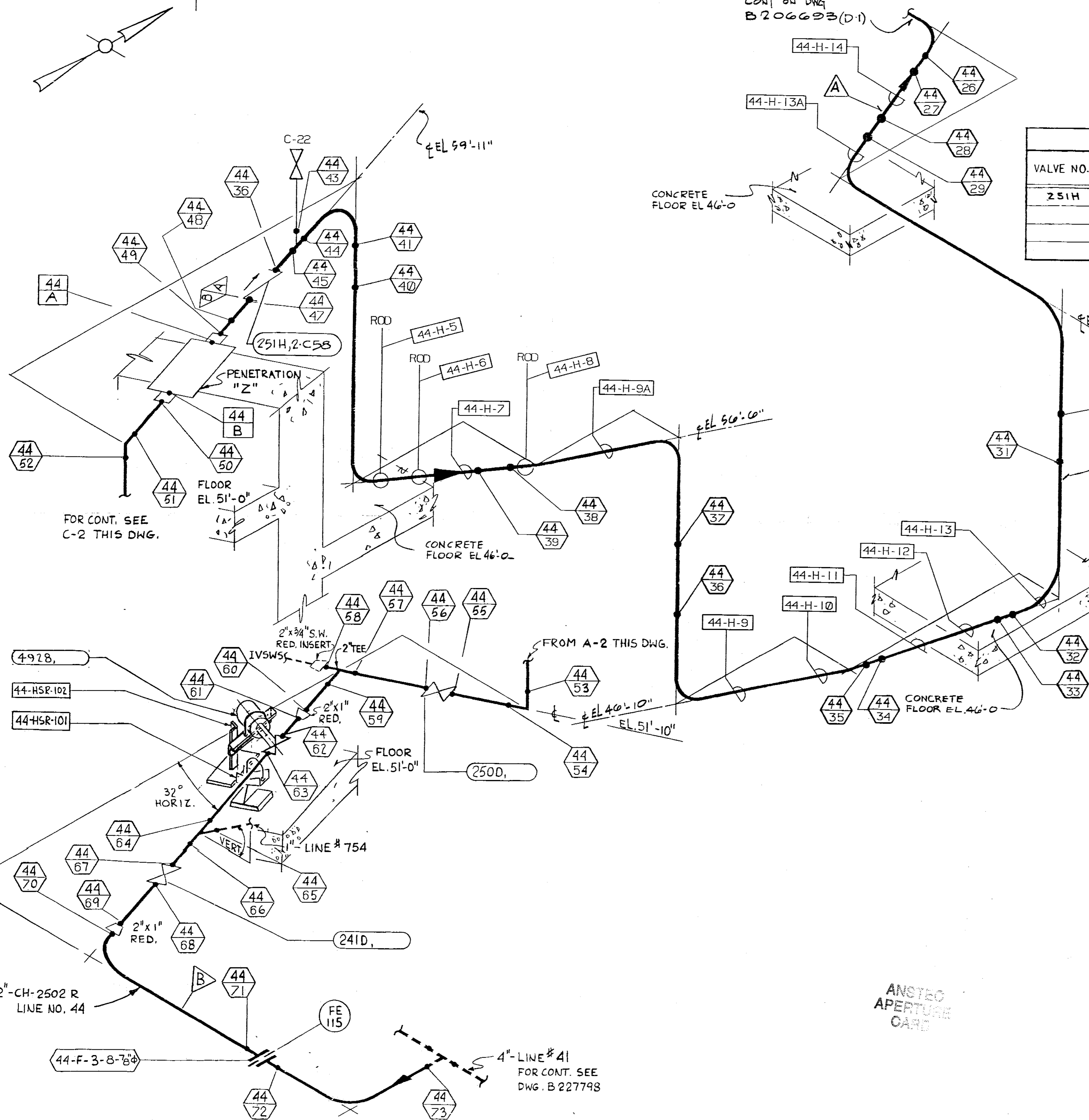
B206692-7
 CONSOLIDATED EDISON CO.
 OF NEW YORK, INC.

STATION LOCATION INDIAN POINT NO. 2
 IN SERVICE INSPECTION
 METRIC OF CUCS SEAL INJECTION
 LINE NO. 44 - INSIDE

SCALE NONE	DRAWN BY P. DENE	RECORDED
PN 7076	CHECKED BY M. STEINAUER	ENG
DWG	ELECT	MECH

APPROVALS

GENERAL ENGINEERING	CHIEF DESIGN ENGINEER	APPROVED
MECHANICAL ENGINEERING	MECH. PLAN. ENGINEER	APPROVED
CIVIL ENGINEERING	PLANT STRUCT. ENGINEER	APPROVED
ELECTRICAL ENGINEERING	T & D STRUCT. ENGINEER	APPROVED
GAS & STEAM OPERATIONS	STATION ELECT. ENGINEER	APPROVED
PRODUCTION	T & D ENGINEER	APPROVED
	STRUCT. ENGINEER	APPROVED
	CONVENTIONAL POWER	APPROVED
	NUCLEAR POWER	APPROVED



ANSTEO APERTURE CARD

