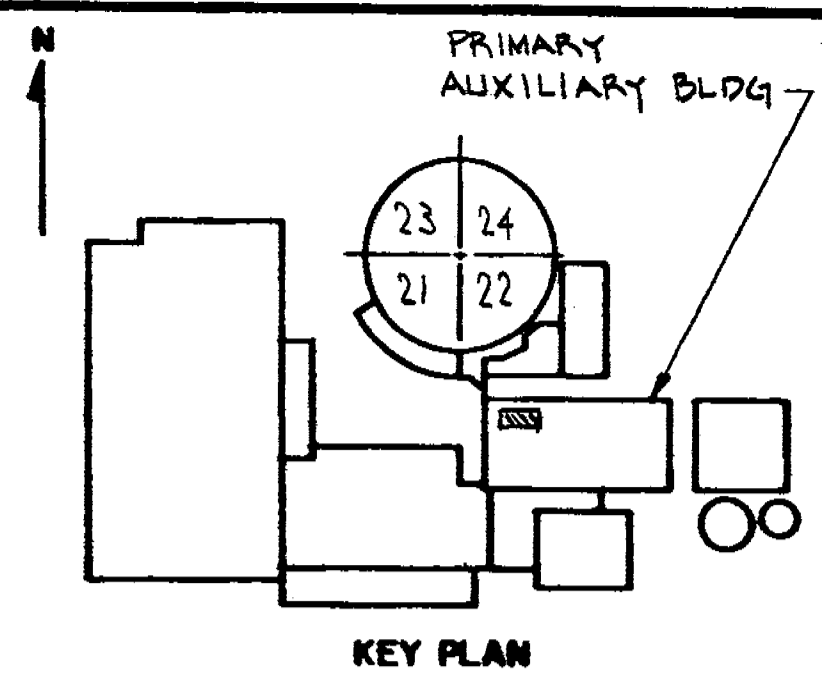


INDIAN POINT No 2
 INJECTION LINE No 189
 PRIMARY AUX BLDG
 B 206727



REVISIONS

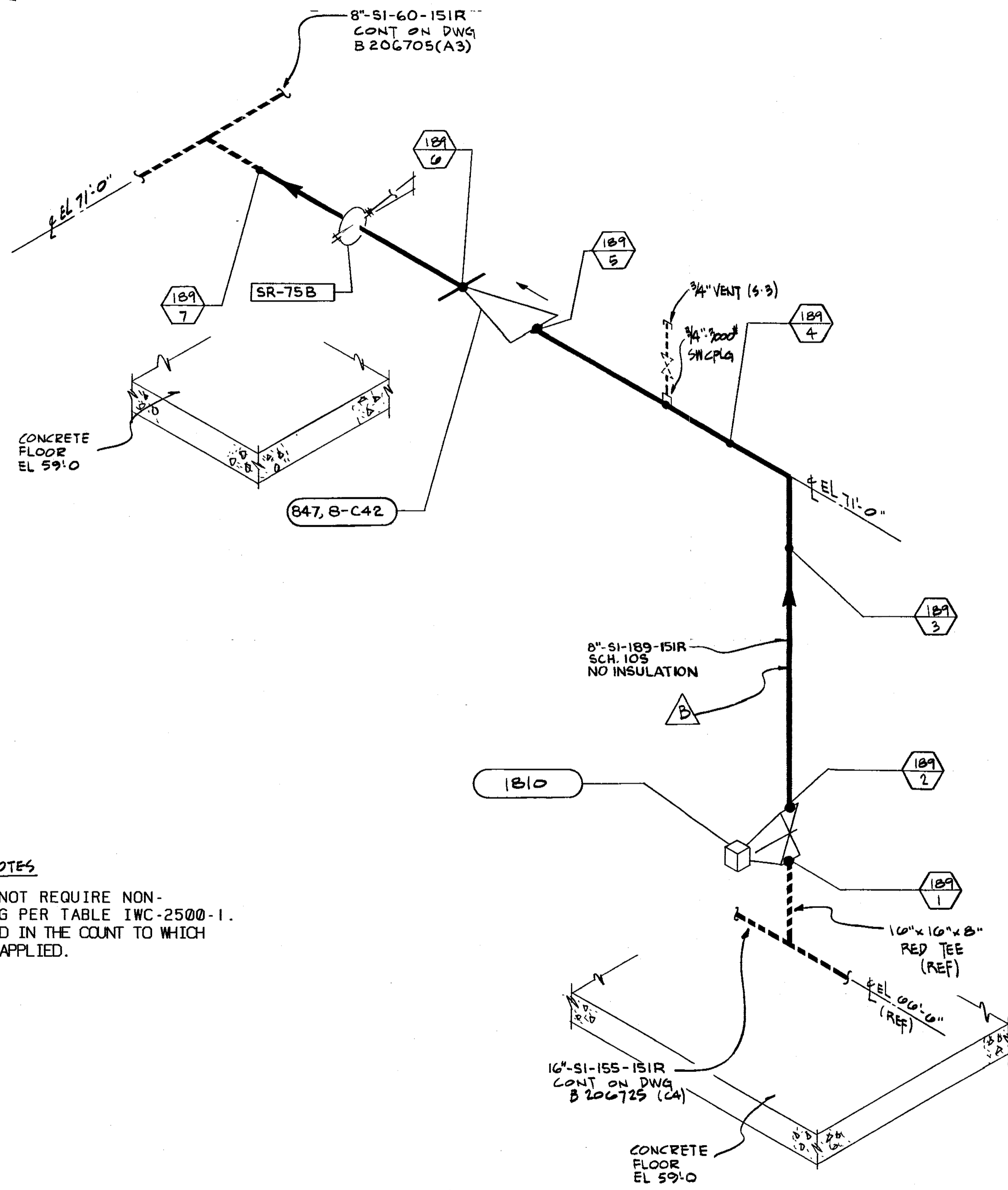
11-3-78
 THIS ISSUE IS NON-CLASS "A" PER CI 240-1. RELEASE FOR RECORD. P.N. 7076 11-3-78

1-10-80
 THIS REVISION IS NON-CLASS "A" PER CI-240-1. ADDED REF. DRAWINGS, ADDED LATEST REV. NO TO REF. DWG'S. RELEASE FOR RECORD. P.N. 7076 RT/AS EBASCO SERVICES, INC. 1-10-80

11-12-82
 THIS REVISION IS NON-CLASS "A" PER CI-240-1. ADDED LATEST REV. NO TO REF. DWG'S. RELEASE FOR RECORD. P.N. 21368. TREADWELL CORP. 11-12-82

1-10-86
 THIS REVISION IS NON CLASS PER CI-240-1. CHANGED DISCIPLINE CODE FROM MJ TO ML. RELEASE FOR RECORD. P.N. 69911-EI AG-1

11-2-88
 THIS REVISION IS CLASS "A" PER 240-1. UPDATED DWG. PER INSERVICE INSPECTION. FIELD REVISION INFORMATION. RELEASE FOR RECORD P.N. 69911-EI J.S.



VALVE BONNET BOLTING

VALVE NO.	VALVE TYPE	NO. OF BOLTS	BOLT DIA.	BOLT TYPE	VALVE MANUFACTURER	MANUFACTURER DWG. NO.
1810	B-6M42FB				ALOTCO	D-45099
847	B-C42				ALOTCO	D-43486

NOT FOR FABRICATION OR INSTALLATION

THIS DRAWING CONTAINS ITEMS WHICH MUST BE CONTROLLED WITHIN CON EDISON AS:
"CLASS A" ITEMS
 PER CI-240-1

- REFERENCE DRAWINGS**
- FLOW DIAGRAM - SAFETY INJECTION SYSTEM 9321-F-2735
 - PRIMARY AUXILIARY BUILDING COMPOSITE PIPING ARRANGEMENT PLANS AT EL 15', EL 35', EL 42', & EL 59' 9321-F-2573
 - PRIMARY AUXILIARY BUILDING COMPOSITE PIPING ARRANGEMENT SECTIONS - SHEET No 3 9321-F-2588
 - PRIMARY AUXILIARY BUILDING COMPOSITE PIPING ARRANGEMENT SECTIONS - SHEET No 4 9321-F-2589

- SYMBOL IDENTIFICATION**
- [Rectangle] SUPPORT NUMBER
 - [Oval] VALVE NUMBER
 - [Hexagon] WELD NUMBER
 - [Triangle] QUALITY GROUP CLASSIFICATION

GENERAL NOTES

1. LINE NO. 189 DOES NOT REQUIRE NON-DESTRUCTIVE TESTING PER TABLE IWC-2500-1. THE WELDS ARE INCLUDED IN THE COUNT TO WHICH THE SAMPLING RATE IS APPLIED.

TYPICAL WELD DETAIL DRAWINGS
 8" CLASS 151, SCH 105 - D208017

AIRSTAR APERTURE CARD

NOT FOR FABRICATION OR INSTALLATION

B206727-4
CONSOLIDATED EDISON CO.
 OF NEW YORK, INC.

STATION LOCATION INDIAN POINT No 2

INSERVICE INSPECTION

ISOMETRIC OF SAFETY INJECTION LINE No 189 - PRIMARY AUXILIARY BLDG

SCALE NONE

DESIGNED BY P DENE

DATE 2/28/84

CHECKED BY M. STEINAUER

DATE 2/28/84

REGULATORY DOCKET FILE # 20-247

APPROVALS:

GENERAL ENGINEERING	Checked
MECHANICAL ENGINEERING	Checked
CIVIL ENGINEERING	Checked
ELECTRICAL ENGINEERING	Checked
GAS & STEAM OPERATIONS	Checked
PRODUCTION	Checked

APPROVED: [Signature]

DATE: 11/2/88

REGULATORY DOCKET FILE # 20-247

DATE: 2/28/84

REGULATORY DOCKET FILE # 20-247

APPROVALS:

GENERAL ENGINEERING	Checked
MECHANICAL ENGINEERING	Checked
CIVIL ENGINEERING	Checked
ELECTRICAL ENGINEERING	Checked
GAS & STEAM OPERATIONS	Checked
PRODUCTION	Checked

APPROVED: [Signature]

DATE: 11/2/88

REGULATORY DOCKET FILE # 20-247

DATE: 2/28/84

REGULATORY DOCKET FILE # 20-247

