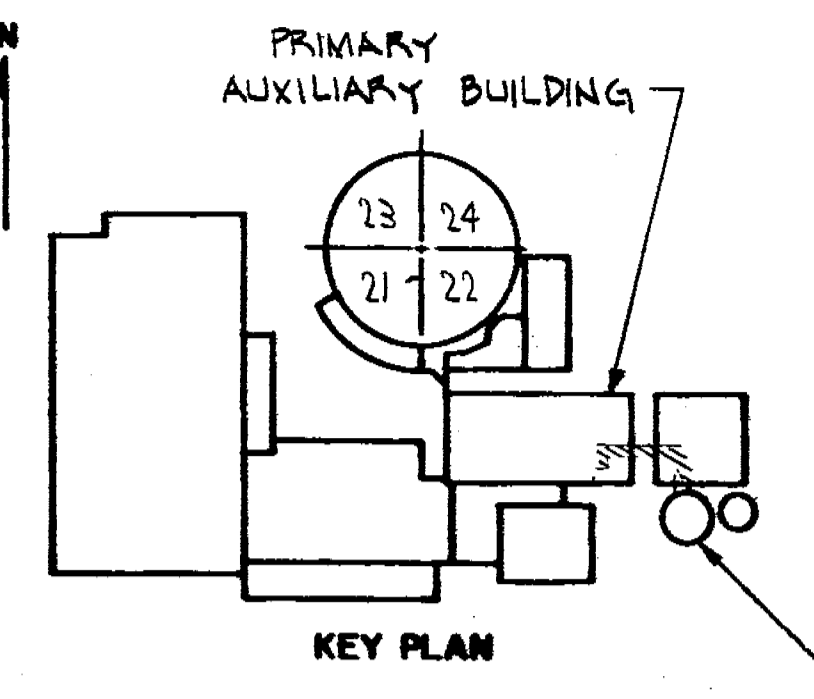


VALVE BONNET BOLTING						
VALVE NO.	VALVE TYPE	NO. OF BOLTS	BOLT DIA.	BOLT TYPE	VALVE MANUFACTURER	MANUFACTURER DWG. NO.
B05A	10-G42				ALOTCO	D-46500
B05B	10-G42				ALOTCO	D-46500

REVISIONS	
19-92	5
THIS REVISION IS CLASS "A" PER CI-240-1. UPDATED DWG AS PER DIR-92-04-121, PKG 7531. RELEASE FOR RECORD P.N. 69911-EI DB/WB	
THIS ISSUE IS NON-CLASS "A" PER CI-240-1. RELEASE FOR RECORD. P.N. 7076 11-3-78	
THIS REVISION IS NON-CLASS "A" PER CI-240-1. ADDED REF. DRAWING, ADDED LATEST REV. NO TO REF. DWG'S. RELEASE FOR RECORD. P.N. 7076 RT/AS EBASCO SERVICES, INC. 1-10-80	
THIS REVISION IS CLASS "A" PER 240-1. UPDATED DWG. PER INSERVICE INSPECTION. FIELD REVISION INFORMATION RELEASE FOR RECORD. P.N. 69911-EI J.S.	
THIS REVISION IS NON-CLASS "A" PER CI-240-1. ADDED LATEST REV. NO TO REF. DWG'S. RELEASE FOR RECORD. P.N. 21368 TREADWELL CORP. 11-12-82	
THIS REV. IS NON-CLASS PER CI-240-1. ADDED SI-HSR-100 DELETE. SI-H 3 ADDED LATEST REV. NO TO REF DWG. RELEASE FOR RECORD. P.N. 324 P3 E D JAW 11/2/83	
THIS REVISION IS NON-CLASS PER CI-240-1. CHANGED DISCIPLINE CODE FROM MJ TO ML. RELEASE FOR RECORD. P.N. 69911-EI A.G./	



REFUELING WATER STORAGE TANK

THIS DRAWING CONTAINS ITEMS WHICH MUST BE CONTROLLED WITHIN CON EDISON AS: "CLASS A" ITEMS PER CI-240-1

NOT FOR FABRICATION OR INSTALLATION

- REFERENCE DRAWINGS
- FLOW DIAGRAM-SAFETY INJECTION SYSTEM — 9321-F-2735
 - NUCLEAR TANK FARM COMPOSITE PIPING — 9321-F-2633
 - PRIMARY AUXILIARY BUILDING COMPOSITE PIPING ARR'G'T-PLAN AT EL 68'-0 — 9321-F-2570
 - PRIMARY AUXILIARY BUILDING COMPOSITE PIPING ARR'G'T-SECTIONS-SHEET No 1 — 9321-F-2586

- SYMBOL IDENTIFICATION
- [Rectangle] SUPPORT NUMBER
 - [Hexagon] FLANGE NUMBER, NUMBER OF BOLTS, & BOLT DIAMETER
 - [Circle] VALVE NUMBER
 - [Hexagon with dot] WELD NUMBER
 - [Triangle] QUALITY GROUP CLASSIFICATION
 - [Square with horizontal lines] INTEGRAL SUPPORT WELD NUMBER

NOT FOR FABRICATION OR INSTALLATION

TYPICAL WELD DETAIL DRAWINGS
 12" CLASS 151, SCH 10S - D20B028
 10" CLASS 151, SCH 10S - D20B023



GENERAL NOTES

1. CONTAINMENT SPRAY LINE NO. 181 FROM THE RWST TO THE PUMPS DOES NOT REQUIRE NON-DESTRUCTIVE TESTING PER TABLE IWC-2500-1 THE WELDS ARE INCLUDED IN THE COUNT TO WHICH THE SAMPLING RATE IS APPLIED.

B206726-6
CONSOLIDATED EDISON CO.
 OF NEW YORK, INC.

STATION LOCATION	INDIAN POINT NR 2		
INSERVICE INSPECTION	PRIMARY AUXILIARY BUILDING		
CONTAINMENT SPRAY SUCTION	NONE		
SCALE	BY	CHECKED BY	DATE
	P DENE	SIMONE	11/2/83
APPROVALS	DESIGNED BY	MECHANICAL ENGINEER	PLANT ENGINEER
	T. & D. ENGINEER		
	STATION ELECT. ENGINEER		
	T. & D. ENGINEER		
	STRUCT. ENGINEER		
	CONVENTIONAL POWER		
	NUCLEAR POWER		

Docket # 32-547
 Accession # 9403102.117
 Date 2/23/79
 Regulatory Docket File

1" = 10'-0"