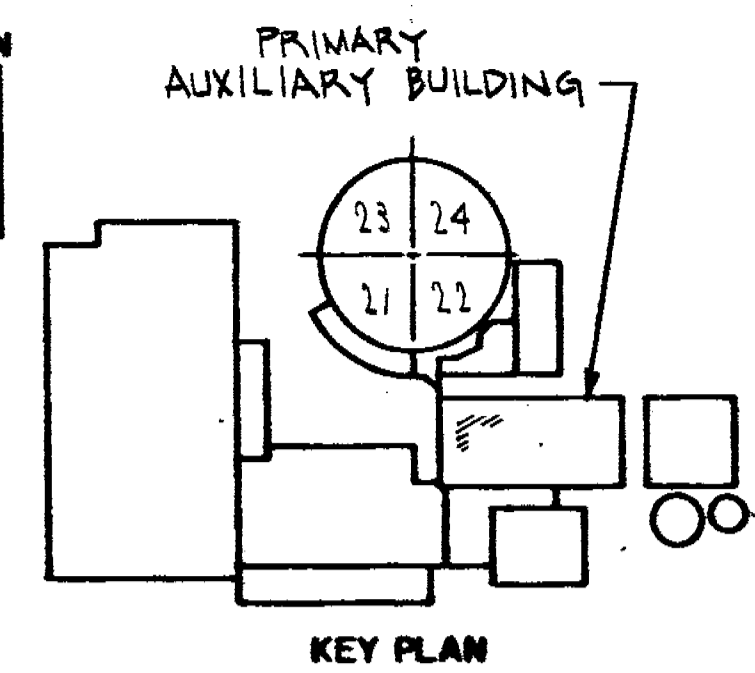


VALVE BONNET BOLTING						
VALVE NO.	VALVE TYPE	NO OF BOLTS	BOLT DIA.	BOLT TYPE	VALVE MANUFACTURER	MANUFACTURER DWG. NO.
881	12-C54				ALYCO	D-44646
882	12-VM54FD	13	7/8"	STD BOLTS	DARLING	11503

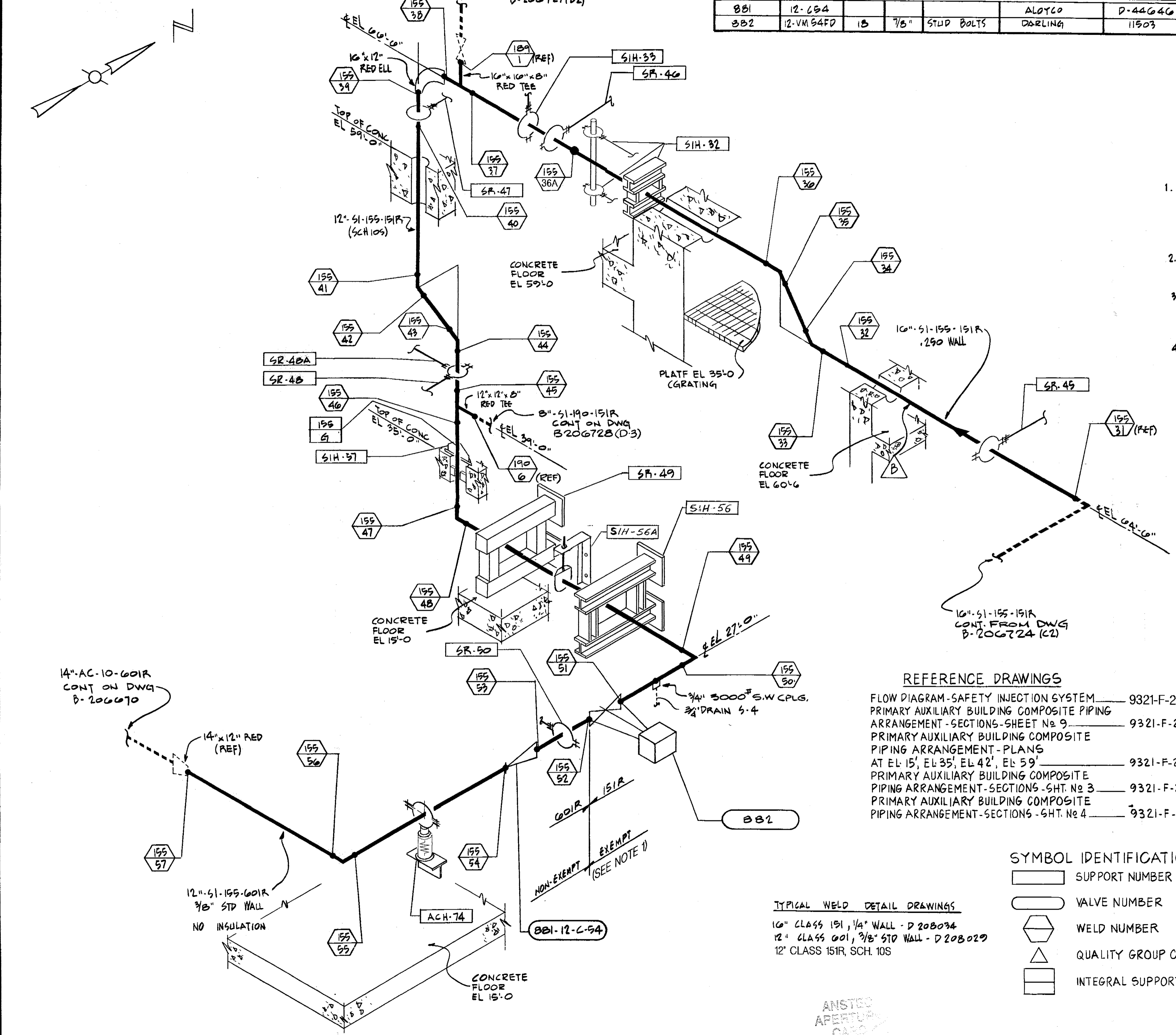


REVISIONS

THIS ISSUE IS NON-CLASS "A" PER CI-240-1. RELEASE FOR RECORD. P.N. 7076 IT-3-78

GENERAL NOTES

1. PIPING FROM VALVE 882 TO THE RWST DOES NOT REQUIRE NON-DESTRUCTIVE TESTING PER TABLE IWC-2500-1. THE WELDS ARE INCLUDED IN THE COUNT TO WHICH THE SAMPLING RATE IS APPLIED.
2. WELDS LESS THAN 2 1/2 IN. NOMINAL PIPE DIA - SOCKET WELDED; 2 1/2 IN. AND LARGER - BUTT WELDED
3. WELDS IN QUALITY GROUP B PIPING, FOUR IN. NOM. PIPE DIA. OR LESS, EXEMPT FROM NDT REQUIREMENTS PER IWC-1221 (a).
4. (R) - INDICATES REMOVABLE INSULATION



THIS REVISION IS CLASS A PER CI-240-1. RELEASE FOR RECORD. P/N 6991-ET. A.G. 1

THIS REVISION IS NON-CLASS "A" PER CI-240-1. RELEASE FOR RECORD. P.N. 7076 RT/AS EBASCO SERVICES, INC. 1-10-80

THIS REVISION IS NON-CLASS "A" PER CI-240-1. RELEASE FOR RECORD. P.N. 21368. TREADWELL CORP. 11-12-82.

THIS REVISION IS CLASS "A" PER CI-240-1. RELEASE FOR RECORD. P/N 69982-AD-4 NPS 12/17/93 AAA

THIS REVISION IS CLASS "A" PER CI-240-1. RELEASE FOR RECORD. P.N. 6991-ET. A.G. 1

NOT FOR FABRICATION OR INSTALLATION

THIS DRAWING CONTAINS ITEMS WHICH MUST BE CONTROLLED WITHIN CON EDISON AS:
"CLASS A" ITEMS
PER CI-240-1

NOT FOR FABRICATION OR INSTALLATION

REFERENCE DRAWINGS

- FLOW DIAGRAM-SAFETY INJECTION SYSTEM 9321-F-2735
- PRIMARY AUXILIARY BUILDING COMPOSITE PIPING ARRANGEMENT-SECTIONS-SHEET No 9 9321-F-2578
- PRIMARY AUXILIARY BUILDING COMPOSITE PIPING ARRANGEMENT-PLANS AT EL 15', EL 35', EL 42', EL 59' 9321-F-2573
- PRIMARY AUXILIARY BUILDING COMPOSITE PIPING ARRANGEMENT-SECTIONS-SHT. No 3 9321-F-2588
- PRIMARY AUXILIARY BUILDING COMPOSITE PIPING ARRANGEMENT-SECTIONS-SHT. No 4 9321-F-2589

SYMBOL IDENTIFICATION

- SUPPORT NUMBER
- VALVE NUMBER
- WELD NUMBER
- QUALITY GROUP CLASSIFICATION
- INTEGRAL SUPPORT WELD NUMBER

TYPICAL WELD DETAIL DRAWINGS

- 10" CLASS 151, 1/4" WALL - D 208034
- 12" CLASS 601, 3/8" STD WALL - D 208029
- 12" CLASS 151R, SCH. 10S

B206725-5
CONSOLIDATED EDISON CO.
OF NEW YORK, INC.

STATION LOCATION INDIAN POINT No 2	
INSERVICE INSPECTION	
ISOMETRIC OF SAFETY INJECTION LINE	
No 155 - PRIMARY AUXILIARY BLDG. SHT 2 OF 2	
SCALE NONE	REVISIONS 11/21/78
DR 7070	CHECKED BY SIMONE
DWG	DATE 2/28/77
DESIGNER	REGULATORY DOCKET FILE
APPROVALS	APPROVALS
MECHANICAL ENGINEER	MECHANICAL ENGINEER
CIVIL ENGINEER	CIVIL ENGINEER
ELECTRICAL ENGINEER	ELECTRICAL ENGINEER
OPERATIONS ENGINEER	OPERATIONS ENGINEER
PRODUCTION ENGINEER	PRODUCTION ENGINEER
CONVENTIONAL POWER	CONVENTIONAL POWER
NUCLEAR POWER	NUCLEAR POWER

ANSTED APERTURE CARD

