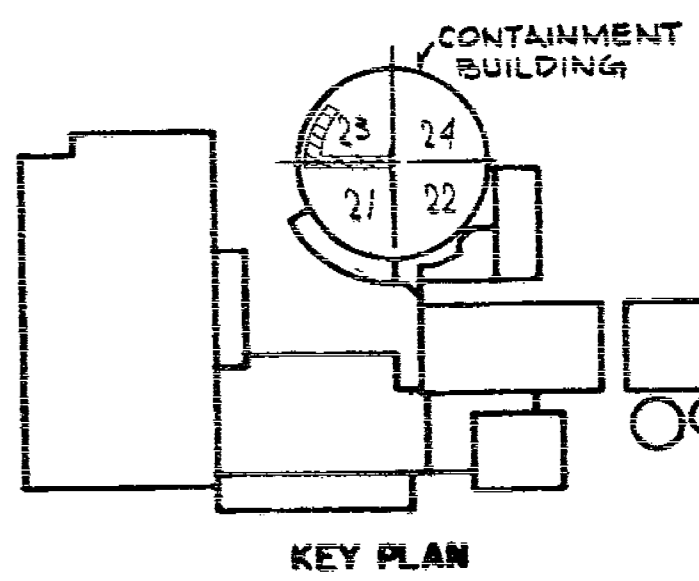


THIS ISSUE IS NON-CLASS "A" PER CI 240-1. RELEASE FOR RECORD. P.N. 7076 11-3-78

THIS REVISION IS NON-CLASS "A" PER CI-240-1. ADDED LATEST REV. NO TO REF. DWG'S. RELEASE FOR RECORD. P.N. 7076 AM/AS EBASCO SERVICES, INC. 1-10-80



VALVE BONNET BOLTING						
VALVE NO.	VALVE TYPE	NO OF BOLTS	BOLT DIA.	BOLT TYPE	VALVE MANUFACTURER	MANUFACTURER DWG. NO.
889B	BVM-94	20	3/4"	STD BOLTS	ALOTCO	D-43539

GENERAL NOTES

- CONTAINMENT SPRAY PIPING FROM VALVE 889B TO AND INCLUDING SPRAY RINGS, EXEMPT FROM NDT REQUIREMENTS. PER IWC-1221(f), OPEN ENDED PORTIONS OF SYSTEMS BEYOND THE LAST SHUT OFF VALVE THAT DO NOT CONTAIN WATER DURING NORMAL PLANT OPERATING CONDITIONS.
- WELDS LESS THAN 2 1/2" NOM PIPE DIA. SOCKET WELDED 2 1/2" AND LARGER - BUTT WELDED
- WELDS IN QUALITY GROUP B PIPING, FOUR INCH NOM PIPE DIA OR LESS, EXEMPT FROM NDT REQUIREMENTS PER IWC-1221(a) & (c).
- (\*) - INDICATES REMOVABLE INSULATION
- WELDS IN 8" NPS, SCHEDULE 40S PIPING ARE NOT REQUIRED TO BE EXAMINED PER TABLE IWC-2500-1. THESE WELDS ARE INCLUDED IN THE COUNT TO WHICH THE SAMPLING RATE IS APPLIED.

THIS REVISION IS NON-CLASS "A" PER CI-240-1. ADDED LATEST REV. NO TO REF. DWG'S. RELEASE FOR RECORD. P.N. 2136B TREADWELL CORP 11-12-82

THIS REVISION IS NON-CLASS PER CI-240-1. CHANGED DISCIPLINE CODE FROM MJ TO MI. RELEASE FOR RECORD. P.N. 69911-EI A.G. /

THIS REVISION IS CLASS "A" PER CI-240-1. REVISED TO SHOW WORK DONE ON EMBOS/21-AA REV. 08 PER MOD. PROC. #FX-91-07049-M (P.G. #021). RELEASE AS BUILT. P.N. 07049-91 M/WFS 10/15/93

2/2/94  
 THIS REVISION IS CLASS "A" PER CI-240-1. UPDATED DWG. PER INSERVICE INSPECTION FIELD REVISION INFORMATION RELEASE FOR RECORD P.N. 69911-EI J.S.

NOT FOR FABRICATION OR INSTALLATION

**B206721-5**  
 CONSOLIDATED EDISON CO.  
 OF NEW YORK, INC.

STATION LOCATION INDIAN POINT NO 2  
 INSERVICE INSPECTION ISOMETRIC OF SAFETY INJECTION LINE NO 94  
 INSIDE CONTAINMENT  
 SHEET NO 1 OF 2

SCALE NONE  
 DRAWN BY W. ANDRUS HED  
 CHECKED BY ASIMONE  
 DATE 2/28/94

APPROVALS	REGULATORY
GENERAL ENGINEERING	REGULATORY ENGINEER
MECHANICAL ENGINEERING	MECH PLAN ENGINEER
CIVIL ENGINEERING	PLANT/STRUCTURE ENGINEER
ELECTRICAL ENGINEERING	T & D STRUCT. ENGINEER
GAS & STEAM OPERATIONS	STATION ELECT. ENGINEER
PRODUCTION	ENGINEER
	CONVENTIONAL POWER
	NUCLEAR POWER

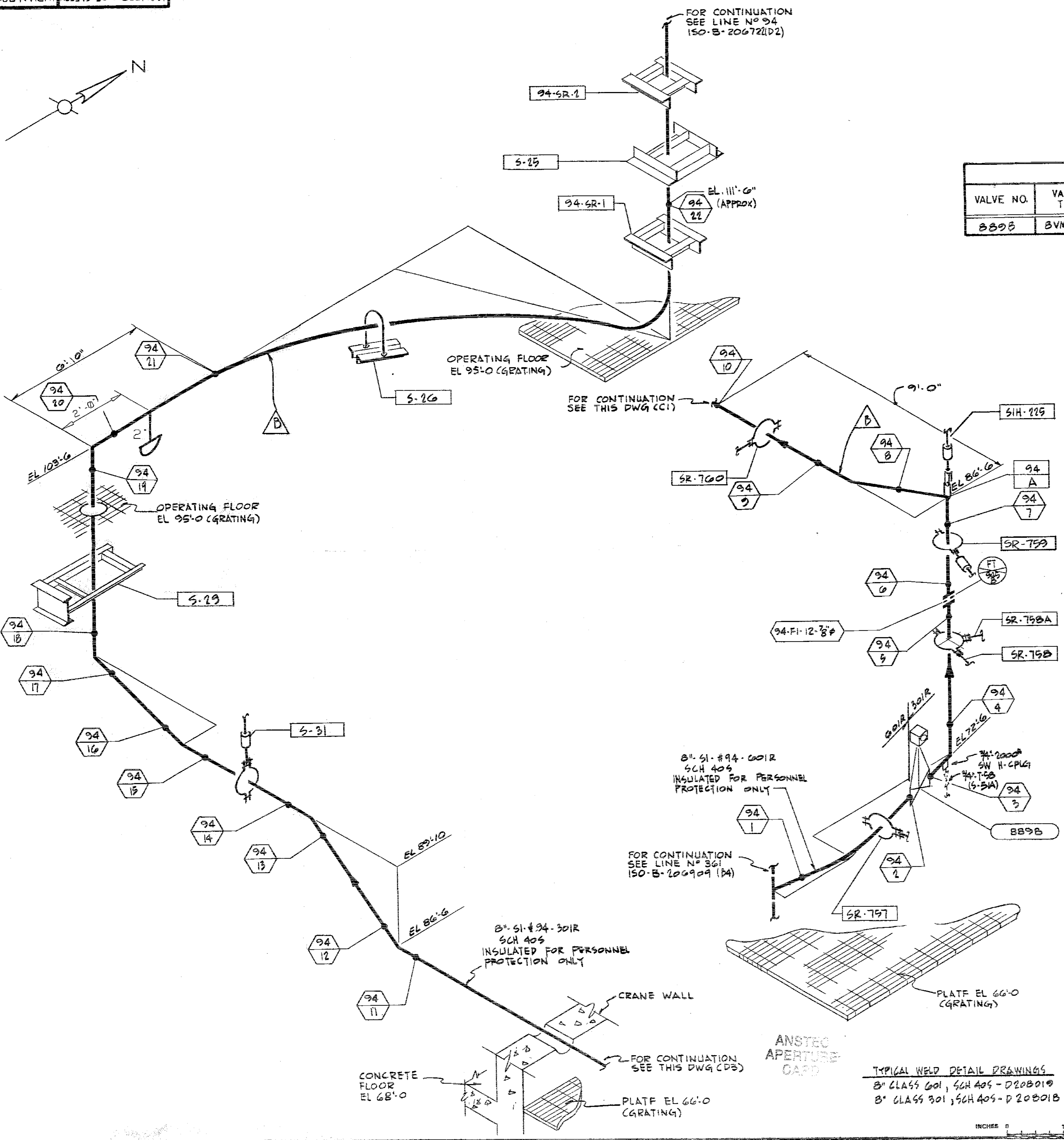
REFERENCE DRAWINGS

- FLOW DIAGRAM SAFETY INJECTION SYSTEM A235296
- CONTAINMENT BUILDING RESIDUAL HEAT EXCHANGER. PIPING-PLANS & SECTIONS (SIS) 9321-F-2562
- CONTAINMENT BUILDING CONTAINMENT SPRAY SYSTEM SECTIONS & DETAILS SHEET NO. 1 9321-F-2624

SYMBOL IDENTIFICATION

- SUPPORT NUMBER
- FLANGE NUMBER, NUMBER OF BOLTS AND BOLT DIAMETER
- VALVE NUMBER
- WELD NUMBER
- QUALITY GROUP CLASSIFICATION
- INTEGRAL SUPPORT WELD NUMBER

THIS DRAWING CONTAINS ITEMS WHICH MUST BE CONTROLLED WITHIN CON EDISON AS:  
**"CLASS A" ITEMS**  
 PER CI-240-1



TYPICAL WELD DETAIL DRAWINGS  
 B" CLASS 601, SCH 40S - D20B010  
 B" CLASS 301, SCH 40S - D20B010