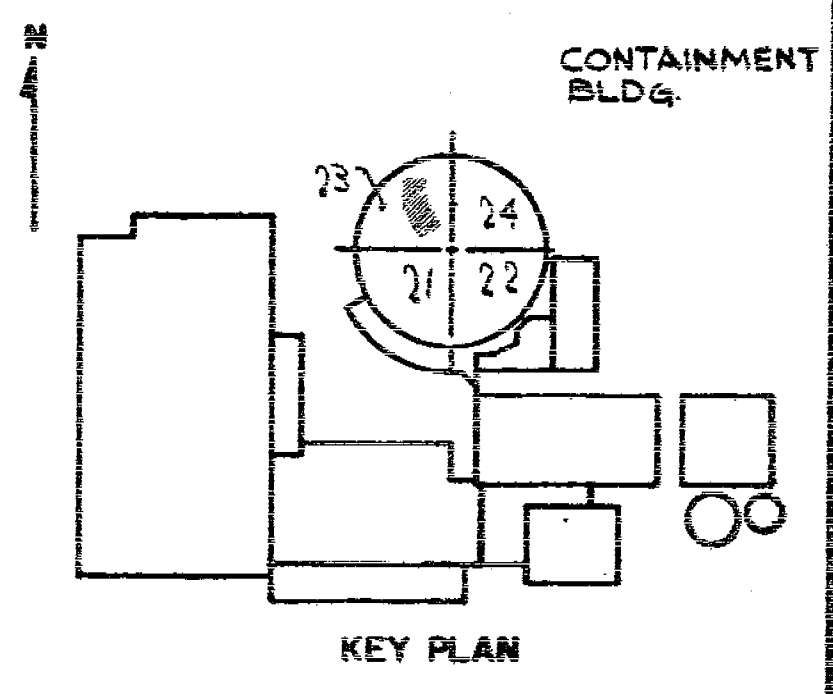
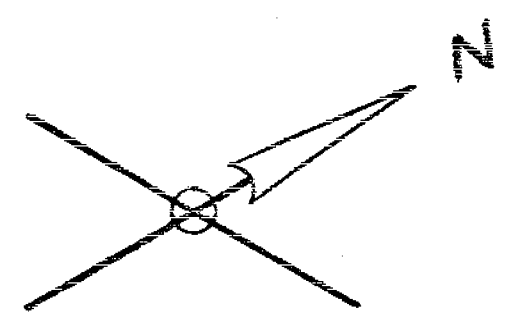


ISOMETRIC OF REACTOR COOLANT SYSTEM INDIAN POINT #2
 LINE #83 INSIDE CONTAINMENT BLDG
 B206717

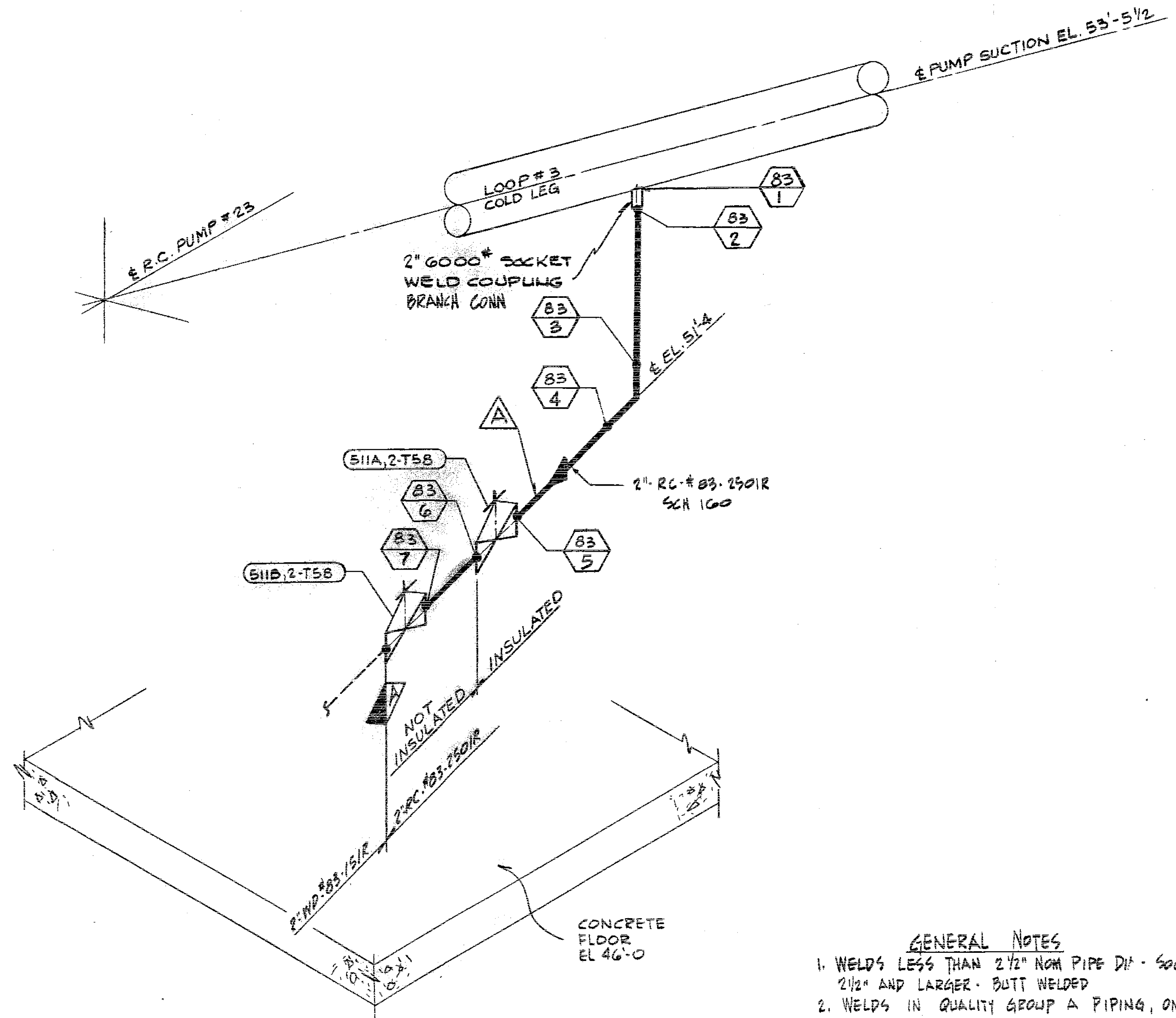


REVISIONS

0	11-3-78	THIS ISSUE IS NON-CLASS "A" PER CI-240-1. RELEASE FOR RECORD. P.N. 7076 11-3-78
1	11-10-80	THIS REVISION IS NON-CLASS "A" PER CI-240-1. ADDED LATEST REV. NO TO REF. DWG'S. RELEASE FOR RECORD. P.N. 7076 11/10/80 AS EBASCO SERVICES, INC. 1-10-80
2	11-12-82	THIS REVISION IS NON-CLASS "A" PER CI-240-1. ADDED LATEST REV. NO TO REF. DWG'S. RELEASE FOR RECORD. P.N. 21368 TREADWELL CORP. 11-12-82.
3	11-12-82	THIS REVISION IS NON-CLASS PER CI-240-1. CHANGE DISCIPLINE CODE FROM MJ TO ML. RELEASE FOR RECORD. P.N. 69911-EI. A.G.I.
4	11-12-84	THIS REVISION IS CLASS "A" PER 240-1, UPDATED DWG. PER INSERVICE INSPECTION. FIELD REVISION INFORMATION RELEASE FOR RECORD. P.N. 69911-EI J.S.

VALVE BONNET BOLTING

VALVE NO.	VALVE TYPE	NO OF BOLTS	BOLT DIA.	BOLT TYPE	VALVE MANUFACTURER	MANUFACTURER DWG. NO.
511A	2-T58				ROCKWELL-EDWARDS	D-464592
511B	2-T58				ROCKWELL-EDWARDS	D-464592



NOT FOR FABRICATION OR INSTALLATION

THIS DRAWING CONTAINS ITEMS WHICH MUST BE CONTROLLED WITHIN CON EDISON AS:
"CLASS A" ITEMS
 PER CI-240-1

NOT FOR FABRICATION OR INSTALLATION

REFERENCE DRAWINGS

- FLOW DIAGRAM REACTOR COOLANT SYSTEM _____ 9321-F-2738
- CONTAINMENT BUILDING WASTE DISPOSAL SYSTEM NORTH HALF _____ 9321-F-2645

SYMBOL IDENTIFICATION

- VALVE NUMBER
- WELD NUMBER
- QUALITY GROUP CLASSIFICATION
- INTEGRAL SUPPORT WELD NUMBER

ANSTED APERTURE CASE

GENERAL NOTES

1. WELDS LESS THAN 2 1/2" NOM PIPE DIA - SOCKET WELDED 2 1/2" AND LARGER - BUTT WELDED
2. WELDS IN QUALITY GROUP A PIPING, ONE INCH NOM PIPE DIA OR LESS, EXEMPT FROM NDT REQUIREMENTS PER IWB-1220(6).
3. (A) INDICATES REMOVABLE INSULATION

Docket # 50-247
 Accession # 940216017
 Date 2/28/74 of 1/1 of Ltr
 Regulatory Docket File

B206717-4
CONSOLIDATED EDISON CO.
 OF NEW YORK, INC.

STATION LOCATION	INDIAN POINT #2
INSERVICE INSPECTION	
ISOMETRIC OF REACTOR COOLANT LINE #83 (DRAIN) INSIDE CONTAINMENT	
SCALE	NONE
DATE	11/10/80
DESIGNER	B. WORTHY
CHECKED BY	A. BROOKS
APPROVALS	
GENERAL ENGINEERING	CHIEF DESIGN ENGINEER
MECHANICAL ENGINEERING	MECH PLANT ENGINEER
CIVIL ENGINEERING	PLANT STRUCTURE ENGINEER
ELECTRICAL ENGINEERING	T & D ELECTRICAL ENGINEER
GAS & STEAM OPERATIONS	STATION ELECTRICIAN
PRODUCTION	T & D ENGINEER
	STRUCTURE ENGINEER
	CONVENTIONAL POWER
	NUCLEAR POWER