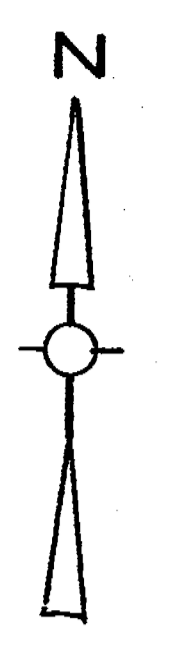


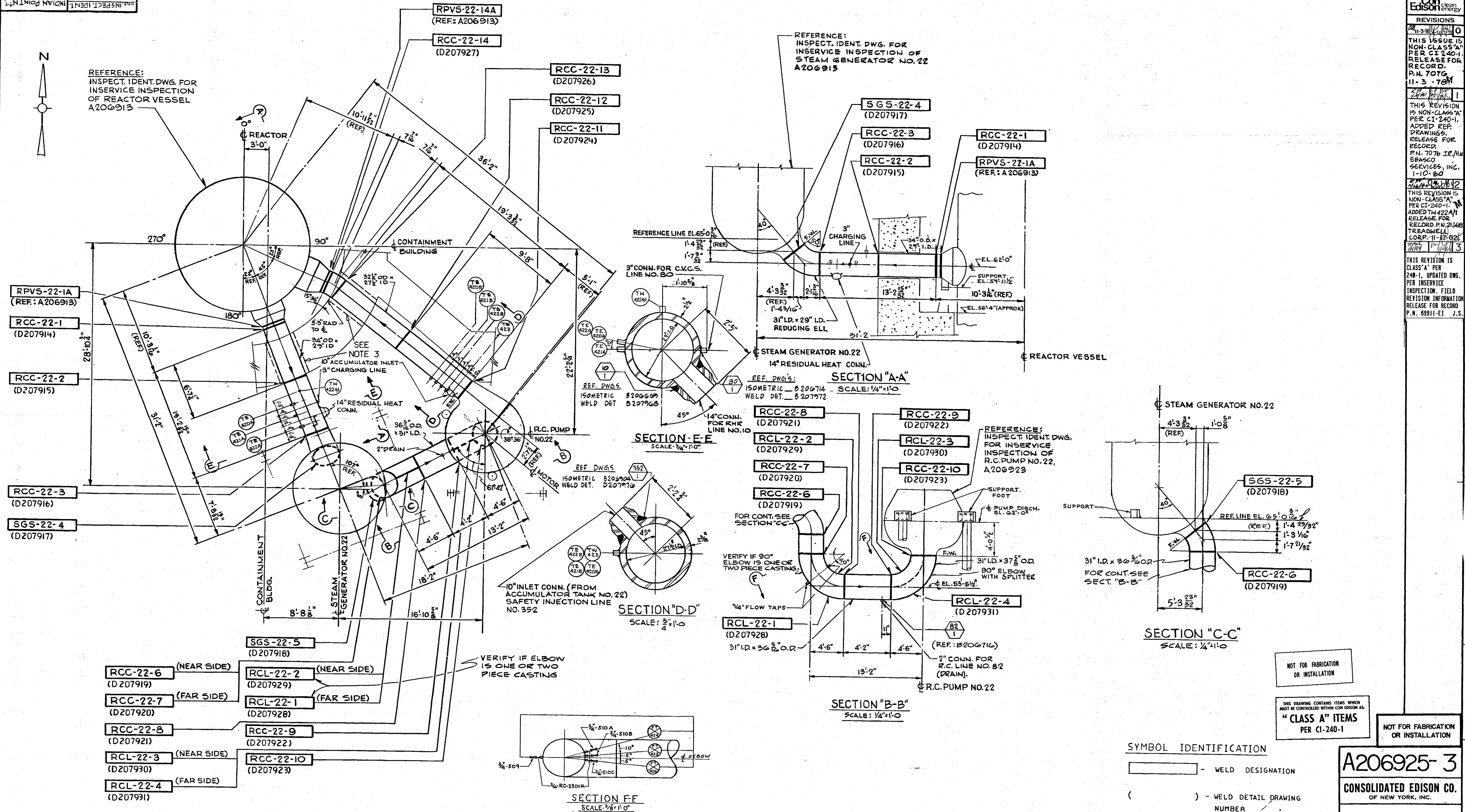
REVISIONS

0	THIS ISSUE IS NON-CLASS "A" PER CI-240-1. RELEASE FOR RECORD. P.N. 7076 11-3-78
1	THIS REVISION IS NON-CLASS "A" PER CI-240-1. ADDED REF. DRAWINGS. RELEASE FOR RECORD. P.N. 7076 J.R.H. 8/8/80 SERVICES, INC. 1-10-80
2	THIS REVISION IS NON-CLASS "A" PER CI-240-1. ADDED T.W. 422A. RELEASE FOR RECORD. P.N. 21568 TREADWELL CORP. 11-17-82
3	THIS REVISION IS CLASS "A" PER 240-1, UPDATED DWG. PER INSERVICE INSPECTION. FIELD REVISION INFORMATION RELEASE FOR RECORD P.N. 68911-EI J.S.



REFERENCE: INSPECT. IDENT. DWG. FOR INSERVICE INSPECTION OF REACTOR VESSEL A206913

REFERENCE: INSPECT. IDENT. DWG. FOR INSERVICE INSPECTION OF STEAM GENERATOR NO. 22 A206913



PLAN
SCALE: 1/4"=1'-0"

SECTION E-E
SCALE: 3/4"=1'-0"

SECTION D-D
SCALE: 3/4"=1'-0"

SECTION A-A
SCALE: 1/4"=1'-0"

SECTION C-C
SCALE: 1/4"=1'-0"

SECTION B-B
SCALE: 1/4"=1'-0"

SECTION F-F
SCALE: 3/8"=1'-0"

FOR GENERAL NOTES SEE DWG. A206924

REFERENCE DRAWINGS
NATIONAL VALVE & MFG. CO. DWG. NO. F-29, F-30, F-31 & F-32 F.P. NR. 20040

NOT FOR FABRICATION OR INSTALLATION

THIS DRAWING CONTAINS ITEMS WHICH MUST BE CONTROLLED WITHIN CON EDISON AS "CLASS A" ITEMS PER CI-240-1

NOT FOR FABRICATION OR INSTALLATION

SYMBOL IDENTIFICATION

- WELD DESIGNATION
- () — WELD DETAIL DRAWING NUMBER

Docket # 20-247
Accession # 94021047
Date 8/23/84 of Ltr
Regulatory Docket File

WESTINGHOUSE ELECTRIC CORPORATION
CONTAINMENT BUILDING
PRIMARY COOLANT SYSTEM
FOR
CONSOLIDATED EDISON COMPANY
INDIAN POINT GENERATING STATION
UNIT NO. 2

U. E. & C. DWG. NO. **9321-F-2534** CON. ED. CO. DWG. NO. **A200635**

A206925-3
CONSOLIDATED EDISON CO.
OF NEW YORK, INC.

STATION LOCATION: INDIAN POINT NO. 2
INSPECTION IDENTIFICATION DWG. FOR INSERVICE INSPECTION OF PRIMARY COOLANT SYS. LOOP TO STM. GEN. NO. 22, QUAL. GR. "A"

AS NOTED	BY	DATE
TOTG-00-1	ASIMONE	11/13/82

DESIGNED BY: [Signature]
CHECKED BY: [Signature]
DRAWN BY: [Signature]
PLANT ENGINEER: [Signature]
CIVIL ENGINEER: [Signature]
ELECTRICAL ENGINEER: [Signature]
MECHANICAL ENGINEER: [Signature]
GENERAL ENGINEER: [Signature]