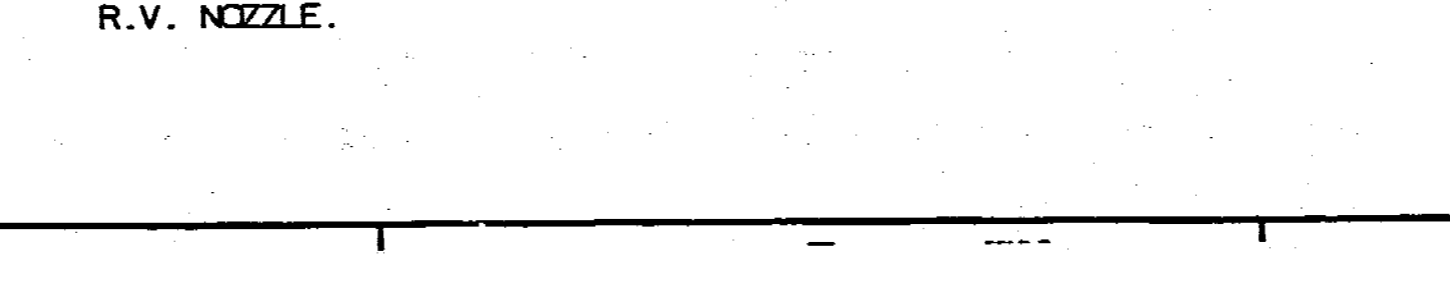
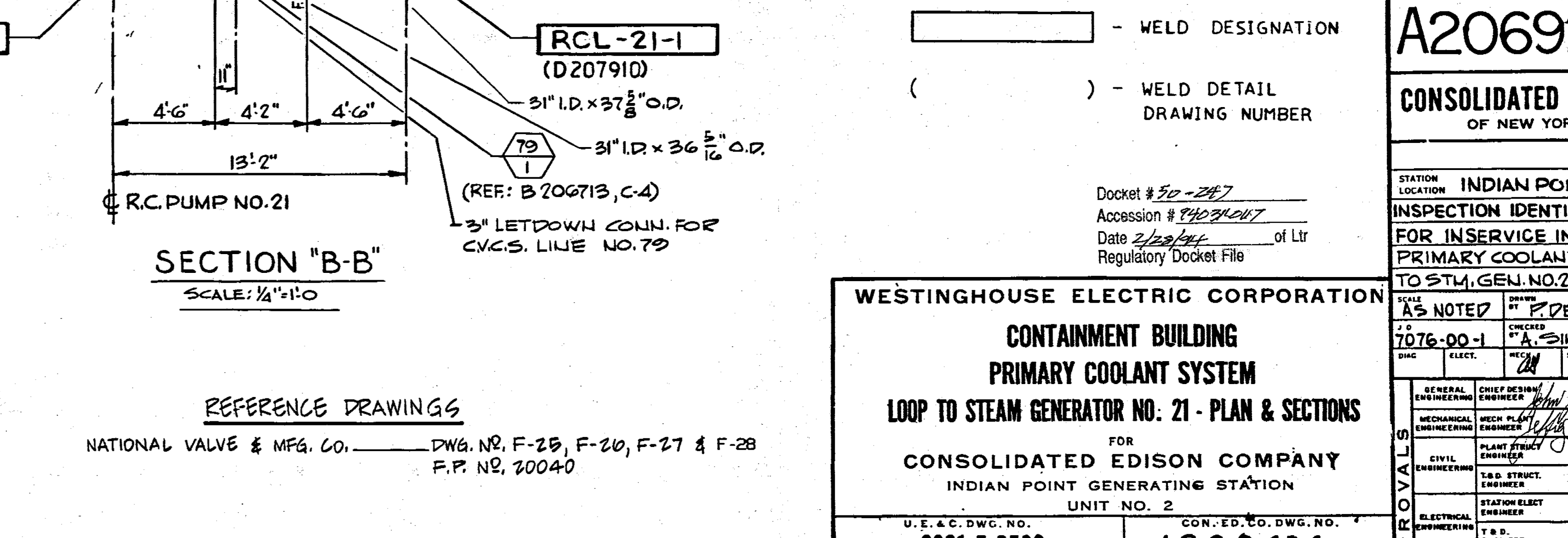
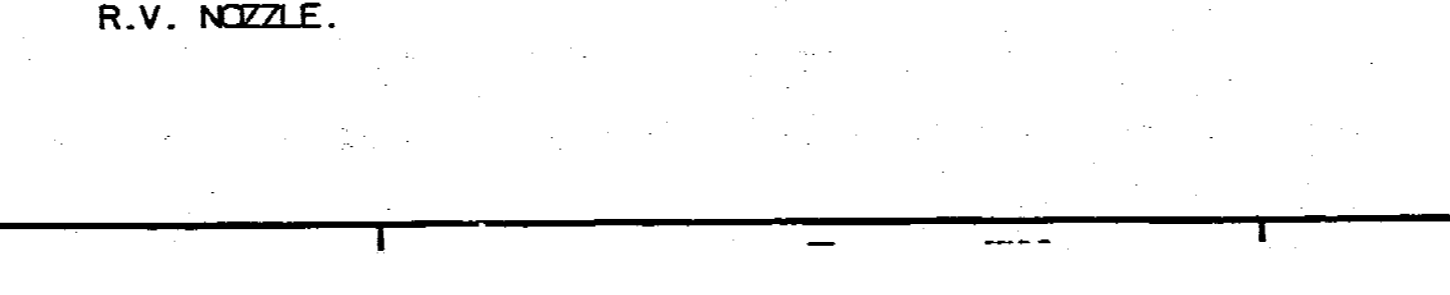
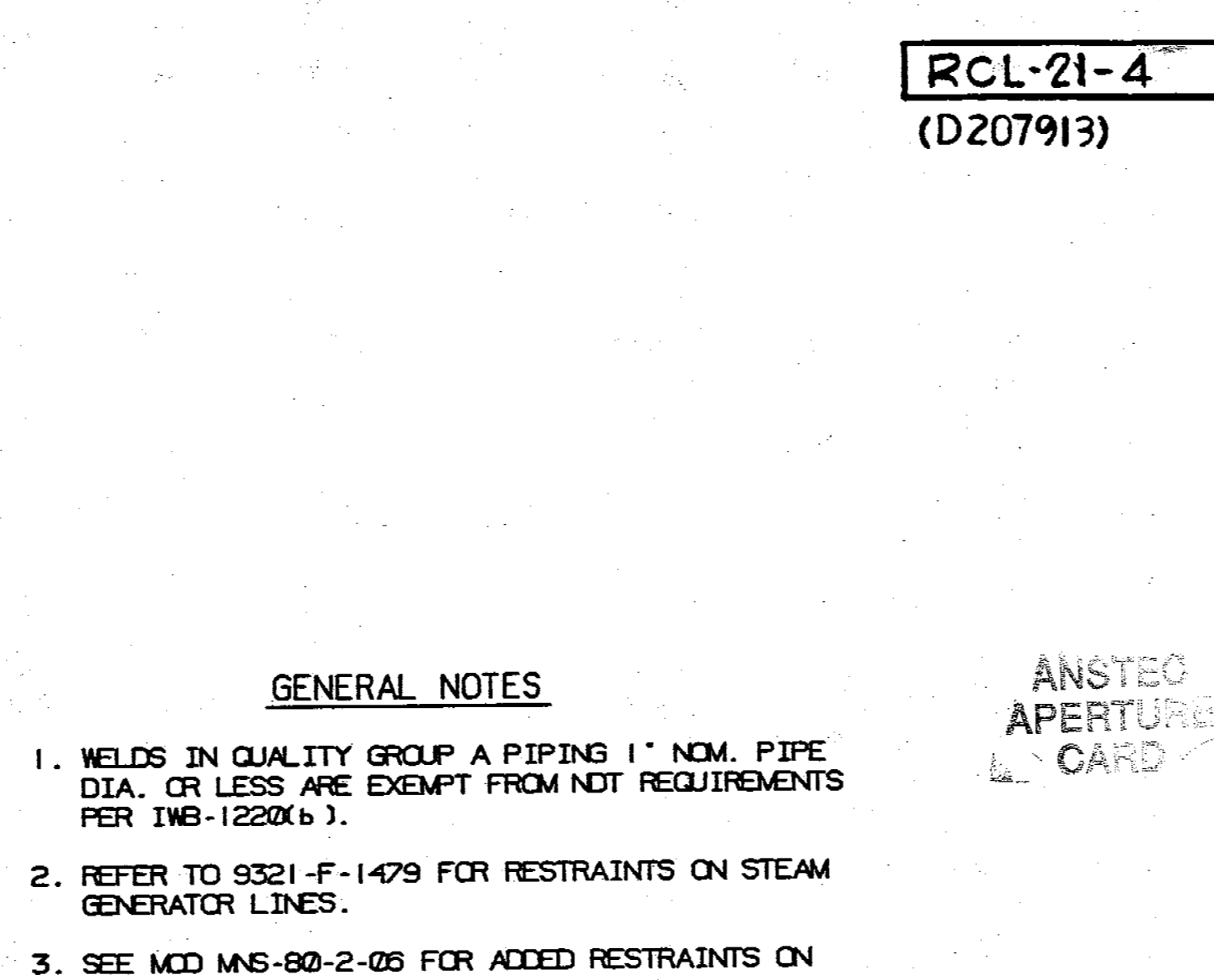
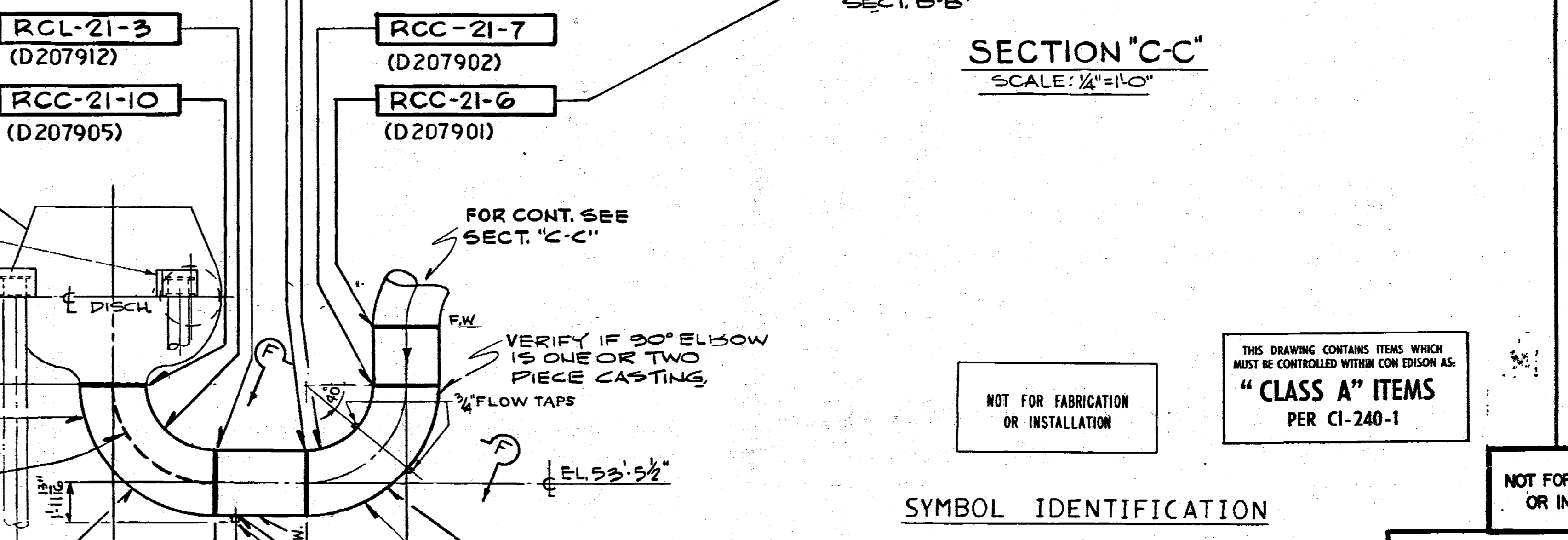
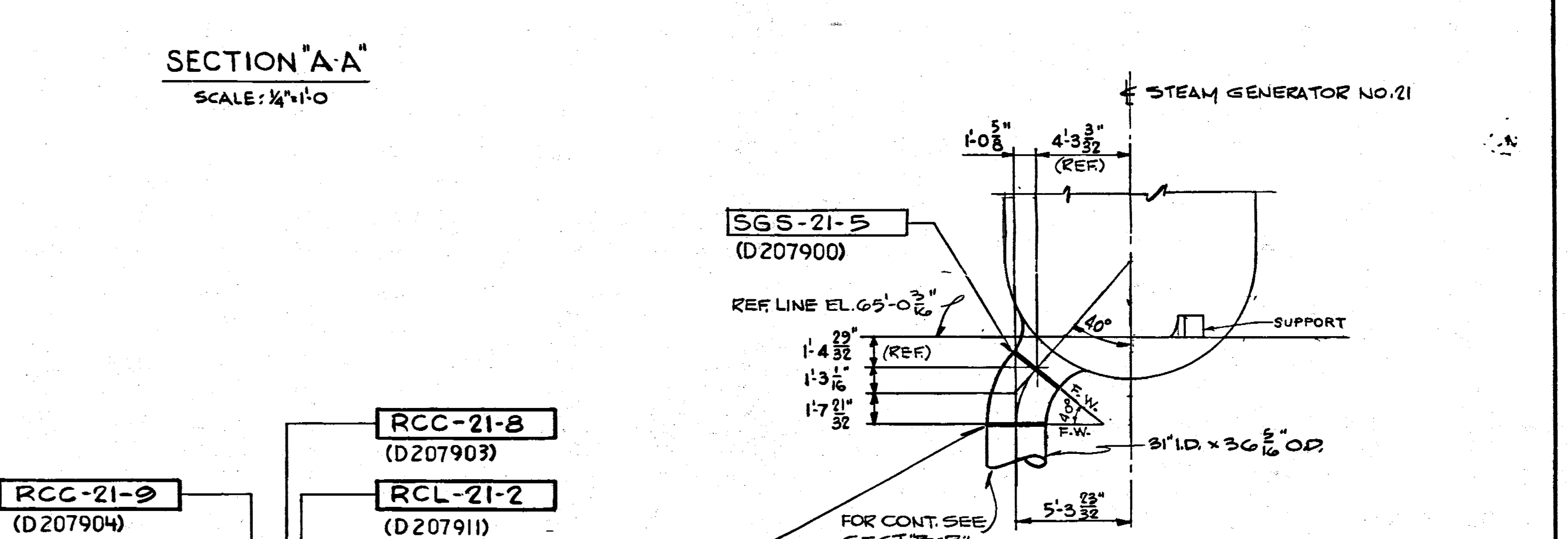
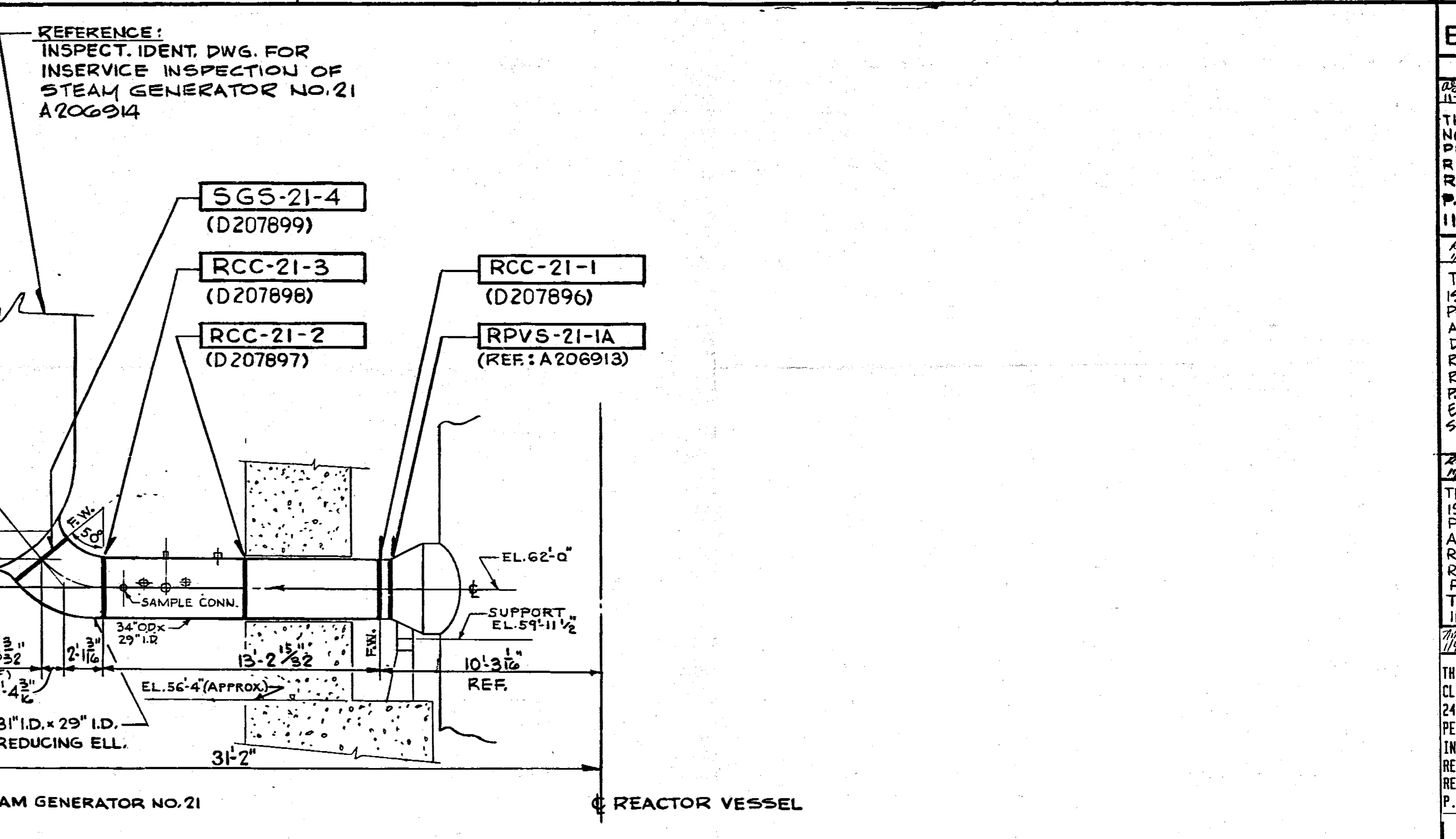
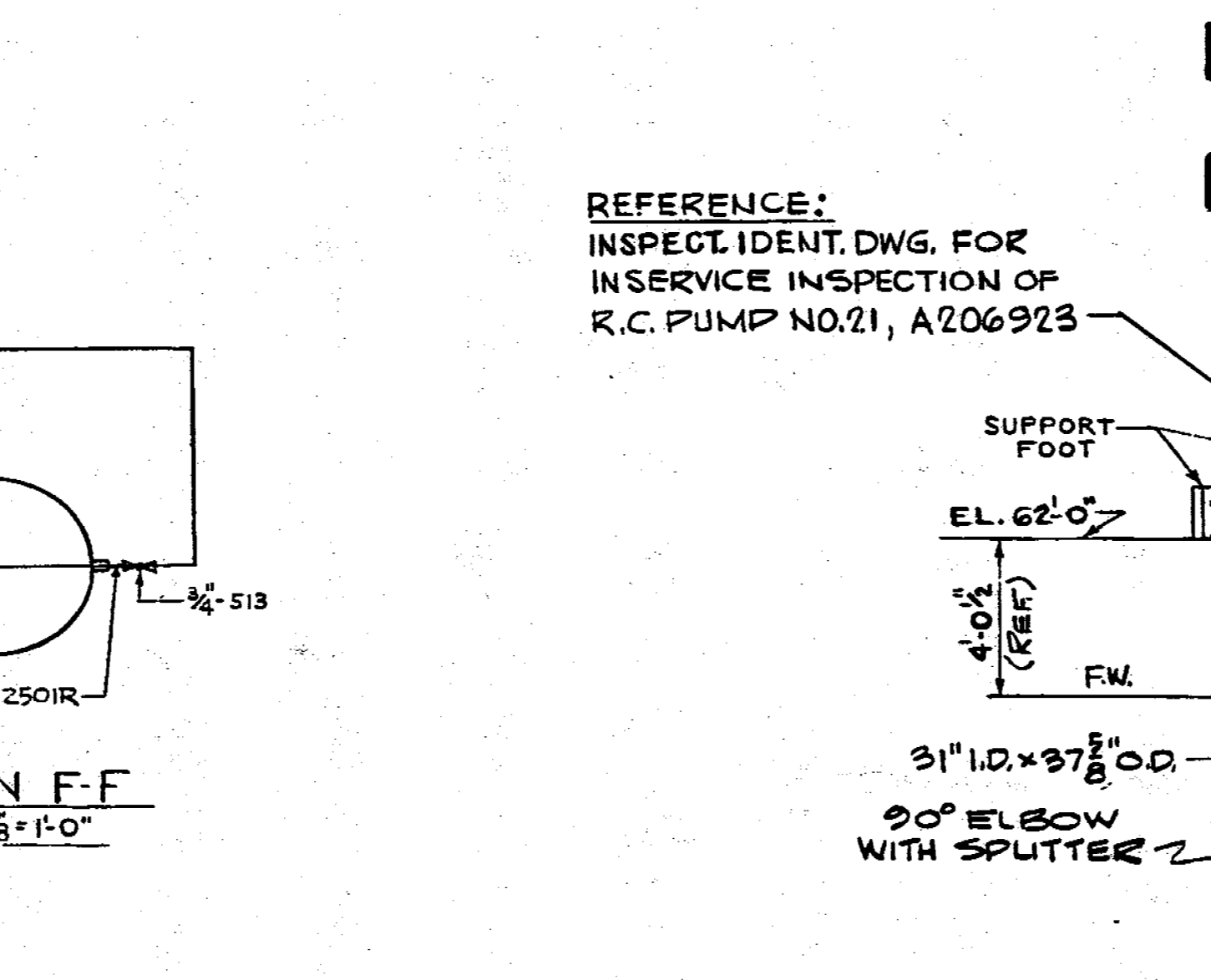
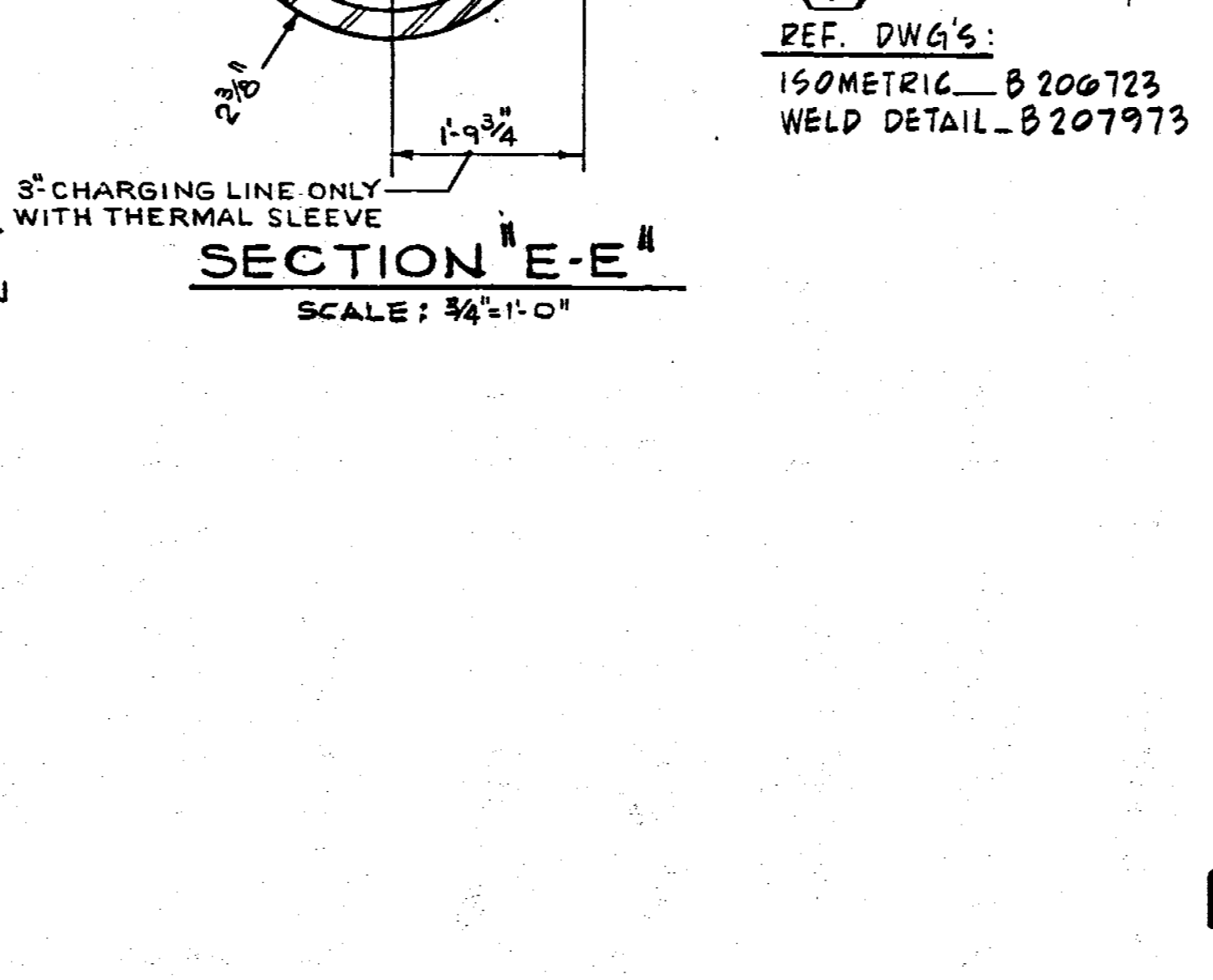
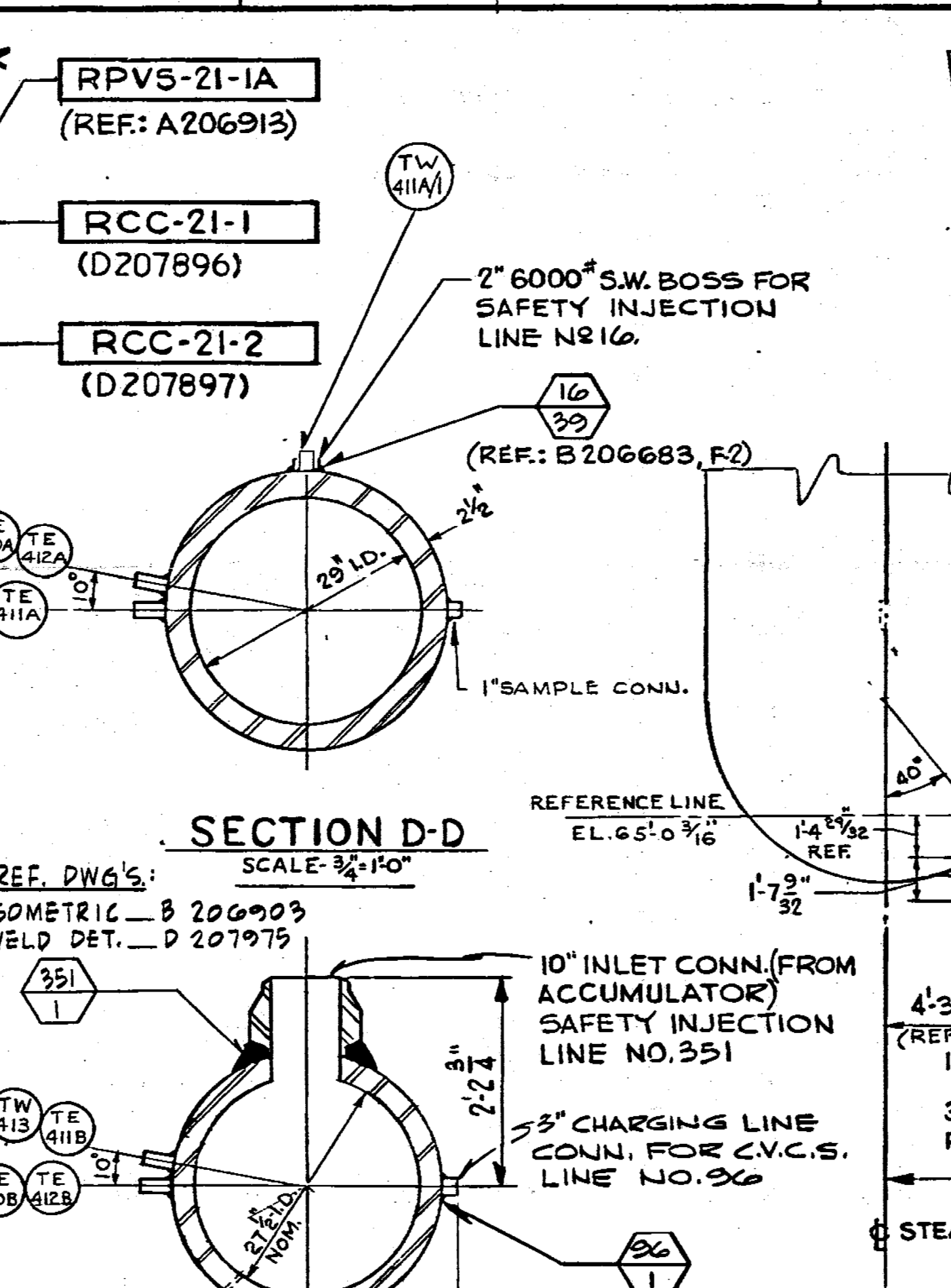
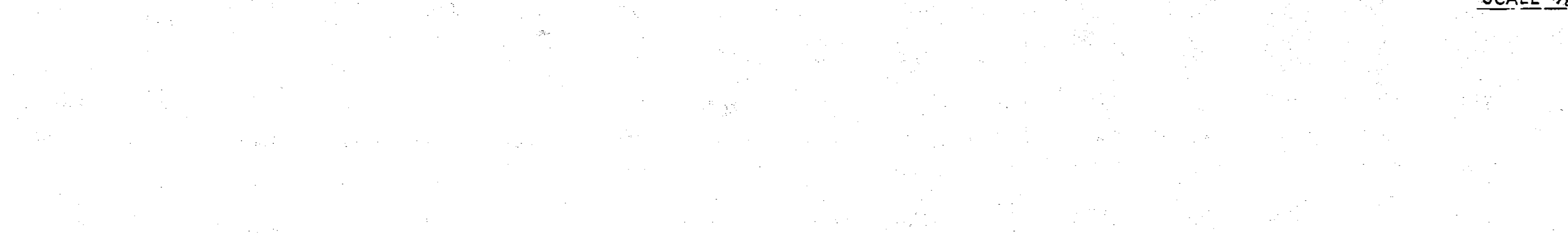
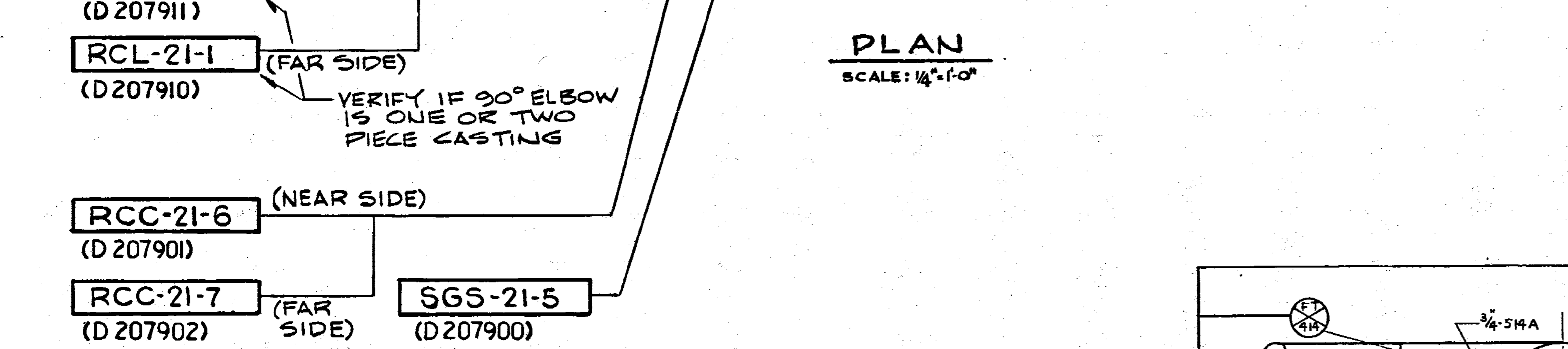
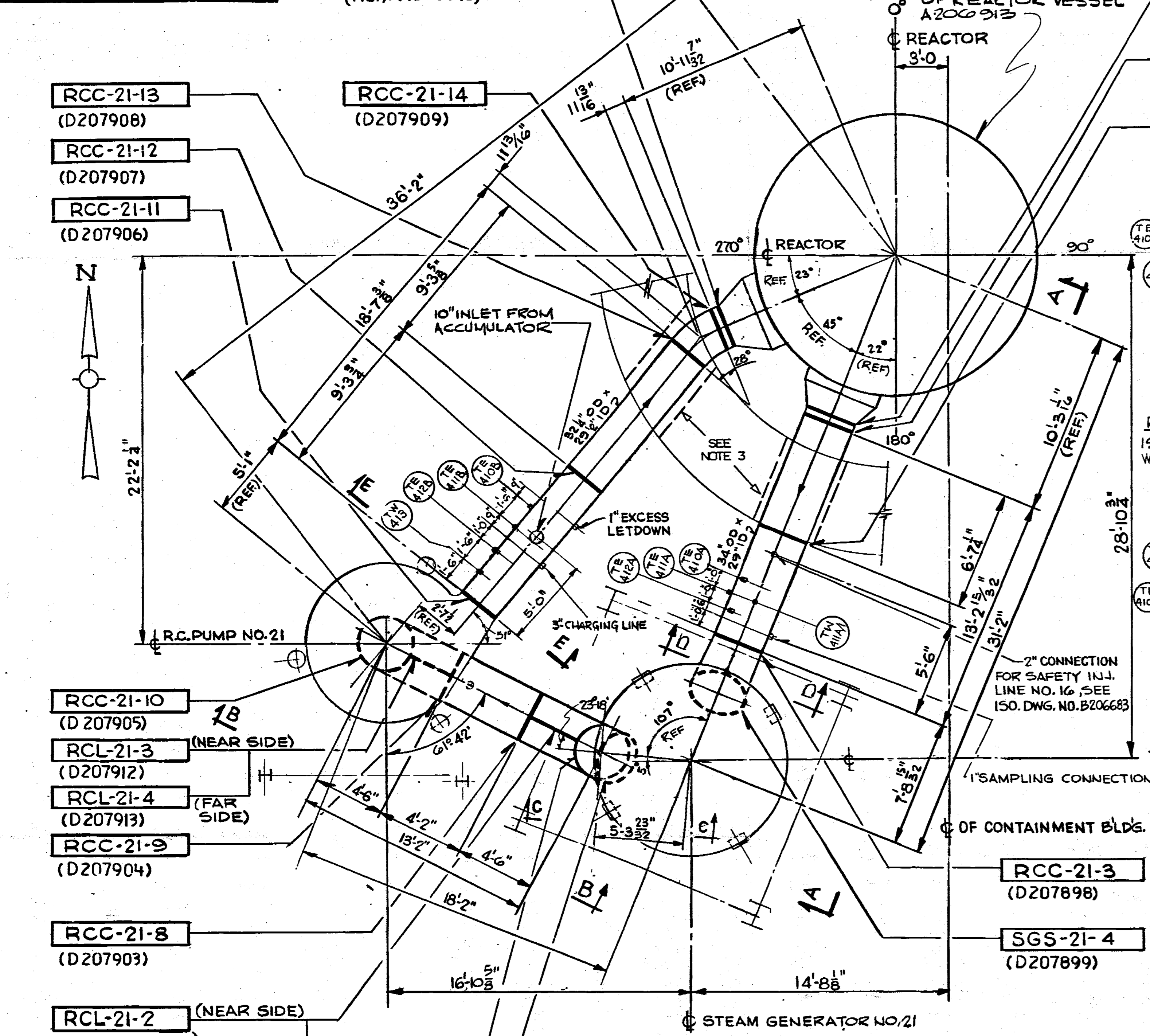


206924-3  
 INSPECT IDENTIFICATION DWG FOR INSERVICE INSPECTION OF REACTOR VESSEL



GENERAL NOTES  
 1. WELDS IN QUALITY GROUP A PIPING 1" NOM. PIPE DIA. OR LESS ARE EXEMPT FROM NOT REQUIREMENTS PER INB-1220(b).  
 2. REFER TO 9321-F-1479 FOR RESTRAINTS ON STEAM GENERATOR LINES.  
 3. SEE MD HAS-90-2-05 FOR ADDED RESTRAINTS ON R.V. NOZZLE.

REFERENCE DRAWINGS  
 NATIONAL VALVE & MFG. CO. DWG. NO. F-25, F-20, F-27 & F-28  
 F.P. NO. 20040

WESTINGHOUSE ELECTRIC CORPORATION  
 CONTAINMENT BUILDING  
 PRIMARY COOLANT SYSTEM  
 LOOP TO STEAM GENERATOR NO. 21 - PLAN & SECTIONS  
 FOR  
 CONSOLIDATED EDISON COMPANY  
 INDIAN POINT GENERATING STATION  
 UNIT NO. 2  
 U.S.A.C. DWG. NO. 9321-F-2533- CON. ED. CO. DWG. NO. A200634

SYMBOL IDENTIFICATION  
 [Symbol] - WELD DESIGNATION  
 ( ) - WELD DETAIL DRAWING NUMBER

NOT FOR FABRICATION OR INSTALLATION  
 THIS DRAWING CONTAINS ITEMS WHICH MUST BE CONTROLLED WITHIN CON EDISON AS "CLASS A" ITEMS PER CI-240-1

Con Edison  
 REVISIONS  
 THIS ISSUE IS NON-CLASS "A" PER CI-240-1. RELEASE FOR RECORD. P.N. 7076 11-3-78  
 THIS REVISION IS NON-CLASS "A" PER CI-240-1. ADDED REF. DRAWINGS. RELEASE FOR RECORD. P.N. 7076 J.E.H.N. EBASCO SERVICES, INC. 1-10-80  
 THIS REVISION IS NON-CLASS "A" PER CI-240-1. RELEASE FOR RECORD. P.N. 21363 TREADWELL CORP. 11-17-82  
 THIS REVISION IS CLASS "A" PER 240-1. UPDATED DWG. PER INSERVICE INSPECTION. FIELD REVISION INFORMATION RELEASE FOR RECORD P.N. 69911-EI J.S.

A206924-3  
 CONSOLIDATED EDISON CO.  
 OF NEW YORK, INC.  
 STATION LOCATION INDIAN POINT NO 2  
 INSPECTION IDENTIFICATION DWG.  
 FOR INSERVICE INSPECTION  
 PRIMARY COOLANT SYS. LOOP  
 TO ST.M. GEN. NO. 21 QUAL. GR. "A"  
 AS NOTED BY P. PELLE 7/12/78  
 7076-00-1  
 WESTINGHOUSE ELECTRIC CORPORATION  
 STATION ELEY ENGINEER  
 U.S.A.C. DWG. NO. 9321-F-2533- CON. ED. CO. DWG. NO. A200634