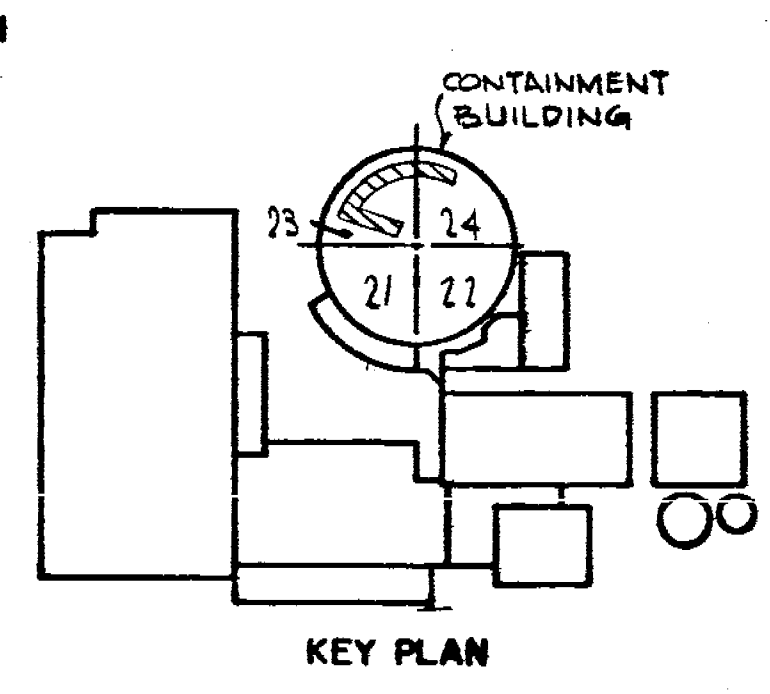


GENERAL NOTES

1. QUALITY GROUP B PORTION OF LINE NO 353 FROM VALVE 894C TO AND INCLUDING ACCUMULATOR NO 23 EXEMPT FROM NDT REQUIREMENTS. PER IWC-1221(c), STATICALLY PRESSURIZED, PASSIVE PWR S.I. SYSTEM.
2. WELDS LESS THAN 2 1/2" NOM. PIPE DIA - SOCKET WELDED 2 1/2" AND LARGER - BUTT WELDED
3. WELDS IN QUALITY GROUP A PIPING, ONE INCH NOM PIPE DIA OR LESS, EXEMPT FROM NDT REQUIREMENTS PER IWB-1220(b)
4. (H) INDICATES REMOVABLE INSULATION
5. WELDS IN QUALITY GROUP B PIPING FOUR INCH NOM. PIPE DIA. OR LESS ARE EXEMPT FROM NDT REQUIREMENTS PER IWC-1221 (a).



VALVE BONNET BOLTING

VALVE NO.	VALVE TYPE	NO. OF BOLTS	BOLT DIA.	BOLT TYPE	VALVE MANUFACTURER	MANUFACTURER DWG. NO.
894C	10-VM98FM	10	1 7/8"	STUD BOLT	DARLING	11663
895E	10-648E	16	1 7/8"	STUD BOLT	DARLING	11542
897C	10-648E	16	1 7/8"	STUD BOLT	DARLING	11542

REVISIONS

NO.	DATE	DESCRIPTION
0	11-3-78	THIS ISSUE IS NON-CLASS "A" PER CI-240-1. RELEASE FOR RECORD. P.N. 7076
1	11-3-78	THIS REVISION IS NON-CLASS "A" PER CI-240-1. ADDED REF. DRAWING. ADDED LATEST REV. NO TO REF. DWG'S: RELEASE FOR RECORD. P.N. 7076 AMIAS
2	11-10-80	EPASCO SERVICES, INC. 1-10-80
3	11-12-82	THIS REVISION IS NON-CLASS "A" PER CI-240-1. ADDED LATEST REV. NO TO REF. DWG'S. RELEASE FOR RECORD. P.N. 21368 TREADWELL CORP. 11-12-82.
4	11-12-82	THIS REVISION IS NON-CLASS "A" PER CI-240-1. CHANGED DISCIPLINE CODE FROM MS TO ML. RELEASE FOR RECORD P.N. 69911-EI AG
5	12-15-83	THIS REVISION IS CLASS "A" PER CI-240-1. UPDATED DWG. PER AS-BUILT INFORMATION AND SERVICE INSPECTION FIELD REVISION INFORMATION. RELEASE FOR RECORD P/N 69922-40-4 NPS 12-15-83 AAA

ACCUMULATOR TANK NO 23

5'-4" TANK BY M.F.R.

10-51-353-601R SCH 40S INSULATE FOR P.P. ONLY

APPROX DIM

CONCRETE FLOOR EL 46'-0"

CONCRETE FLOOR EL 46'-0"

PLATF EL 65'-0" (GRATING)

10" BRANCH CONNECTION

EL 62'-0"

FOR CONTINUATION SEE THIS DWG (E4)

10-51-353-2501R

CONCRETE FLOOR EL 46'-0"

NOT FOR FABRICATION OR INSTALLATION

THIS DRAWING CONTAINS ITEMS WHICH MUST BE CONTROLLED WITHIN CON EDISON AS:

"CLASS A" ITEMS PER CI-240-1

NOT FOR FABRICATION OR INSTALLATION

- REFERENCE DRAWINGS**
- FLOW DIAGRAM - SAFETY _____ A235296
 - INJECTION SYSTEM _____
 - CONTAINMENT BUILDING - SAFETY INJECTION SYSTEM DETAILS _____ 9321-F-2646
 - CONTAINMENT BUILDING - SAFETY INJECTION SYSTEM PLAN SH NO 2 _____ 9321-F-2617
 - CONTAINMENT BUILDING - SAFETY INJECTION SYSTEM - SECT 5 - SH NO 2 _____ 9321-F-2626

- SYMBOL IDENTIFICATION**
- [Rectangle] SUPPORT NUMBER
 - [Circle] VALVE NUMBER
 - [Hexagon] WELD NUMBER
 - [Triangle] QUALITY GROUP CLASSIFICATION
 - [Square] INTEGRAL SUPPORT WELD NUMBER

TYPICAL WELD DETAIL DRAWING

10" CLASS 2501, SCH 140S - D208025

10" CLASS 601, SCH 40S - D208024

ANSTED APERTURE CARD

B206905-4

CONSOLIDATED EDISON CO.
OF NEW YORK, INC.

STATION LOCATION INDIAN POINT NO 2

INSERVICE INSPECTION ISOMETRIC OF SAFETY INJECTION LINE NO 353

ACCUMULATOR NO 23 DISCHARGE

SCALE NONE

PH 1076

DESIGNED BY W ANDRUSHKO

CHECKED BY M STEINAUER

DATE 11/2/78

APPROVALS

GENERAL ENGINEERING	CHIEF DESIGNER	DATE
MECHANICAL ENGINEERING	MECH ENGINEER	DATE
CIVIL ENGINEERING	PLANT ENGINEER	DATE
ELECTRICAL ENGINEERING	T & D STAFF ENGINEER	DATE
GAS & STEAM OPERATIONS	STATION ELECTRICIAN	DATE
PRODUCTION	CONVENTIONAL POWER	DATE
	NUCLEAR POWER	DATE