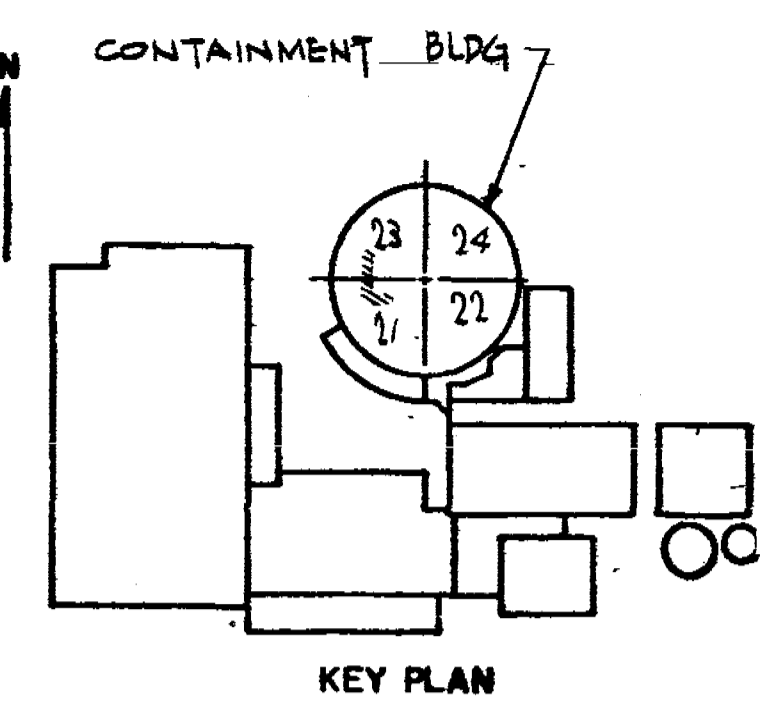


VALVE BONNET BOLTING						
VALVE NO.	VALVE TYPE	NO. OF BOLTS	BOLT DIA.	BOLT TYPE	VALVE MANUFACTURER	MANUFACTURER DWG. NO.
894A	10-VM58FM	10	1 7/8"	STUD BOLT	DARLING	11663
899A	10-C48Z	10	1 7/8"	STUD BOLT	DARLING	11542
897A	10-C48Z	10	1 7/8"	STUD BOLT	DARLING	11542



REVISIONS	
0	THIS ISSUE IS NON-CLASS "A" PER CI-240-1. RELEASE FOR RECORD. P.N. 7076 11-3-78
1	THIS REVISION IS NON-CLASS "A" PER CI-240-1. ADDED REF. DRAWINGS. ADDED LATEST REV. NO TO REF. DWG'S. RELEASE FOR RECORD. P.N. 7076 RT/AS EBASCO SERVICES, INC. 1-10-80
2	THIS REVISION IS NON-CLASS "A" PER CI-240-1. ADDED LATEST REV. NO TO REF. DWG'S. RELEASE FOR RECORD. P.N. 21368 TREADWELL CORP. 11-12-82.
3	THIS REV. IS NON CLASS PER CI-240-1 CHANGED DISCIPLINE CODE FROM MJ 70 ML. RELEASE FOR RECORD P.N. 6991/EI A.G.
4	THIS REVISION IS CLASS A PER CI-240-1 UPDATED DWG PER AS-BUILT INFORMATION AND SERVICE INSPECTION FIELD REVISION INFORMATION RELEASED FOR RECORD P/N 69982-AD-4 NPS 12-15-93 AAA

- GENERAL NOTES**
- QUALITY GROUP B PORTION OF LINE NO 351 FROM VALVE 895A TO AND INCLUDING ACCUMULATOR NO 21 EXEMPT FROM NDT REQUIREMENTS. PER IWC-1221 (c), STATICALLY PRESSURIZED, PASSIVE PWR SI SYSTEM.
  - WELDS LESS THAN 2 1/2" NOM. PIPE DIA. SOCKET WELDED 2 1/2" AND LARGER - BUTT WELDED
  - WELDS IN QUALITY GROUP A PIPING, ONE INCH NOM. PIPE DIA OR LESS EXEMPT FROM NDT REQUIREMENTS PER IWB-1220 (b).
  - (\*) INDICATES REMOVABLE INSULATION
  - WELDS IN QUALITY GROUP B PIPING FOUR INCH NOM. PIPE DIA. OR LESS ARE EXEMPT FROM NDT REQUIREMENTS PER IWC-1221 (a).

NOT FOR FABRICATION OR INSTALLATION

THIS DRAWING CONTAINS ITEMS WHICH MUST BE CONTROLLED WITHIN CON EDISON AS:

**"CLASS A" ITEMS**  
PER CI-240-1

NOT FOR FABRICATION OR INSTALLATION

- REFERENCE DRAWINGS**
- FLOW DIAGRAM-SAFETY INJECTION SYSTEM - A235296
  - CONTAINMENT BUILDING RESIDUAL HEAT EXCHANGER PIPING PLANS & SECTIONS (SIS) - 9321-F-2562
  - CONTAINMENT BUILDING SAFETY INJECTION SYSTEM - PLAN - SHEET No 1 - 9321-F-2614
  - CONTAINMENT BUILDING SAFETY INJECTION SYSTEM - SECTIONS - SHEET No 1 - 9321-F-2615

**TYPICAL WELD DETAIL DRAWINGS**

- 10" CLASS 2501, SCH 140S - D 208025
- 10" CLASS 601, SCH 40S - D 208024

- SYMBOL IDENTIFICATION**
- SUPPORT NUMBER
  - VALVE NUMBER
  - WELD NUMBER
  - QUALITY GROUP CLASSIFICATION
  - INTEGRAL SUPPORT WELD NUMBER

**B206903-4**

**CONSOLIDATED EDISON CO.**  
OF NEW YORK, INC.

STATION LOCATION: INDIAN POINT 422

INSERVICE INSPECTION

ISOMETRIC OF SAFETY INJECTION LINE# 351- INSIDE CONTAINMENT - SH 2 OF 2

ACCUMULATOR NO 21 DISCHARGE

SCALE: NONE

DATE: 7/12/78

DESIGNED BY: P. PENE

CHECKED BY: M. STEINAUER

DATE: 7/12/78

APPROVALS:

GENERAL ENGINEERING	CHIEF DESIGNER	DATE
Mechanical Engineering	MECH. ENGR.	7/12/78
Civil Engineering	PLANT STRUCT. ENGINEER	7/12/78
Electrical Engineering	T & D STRUCT. ENGINEER	
Gas & Steam Operations	STATION ELECT. ENGINEER	
Production	T & D ENGINEER	
	STRUCT. ENGINEER	
	CONVENTIONAL POWER	
	NUCLEAR POWER	

APPROVED: ML