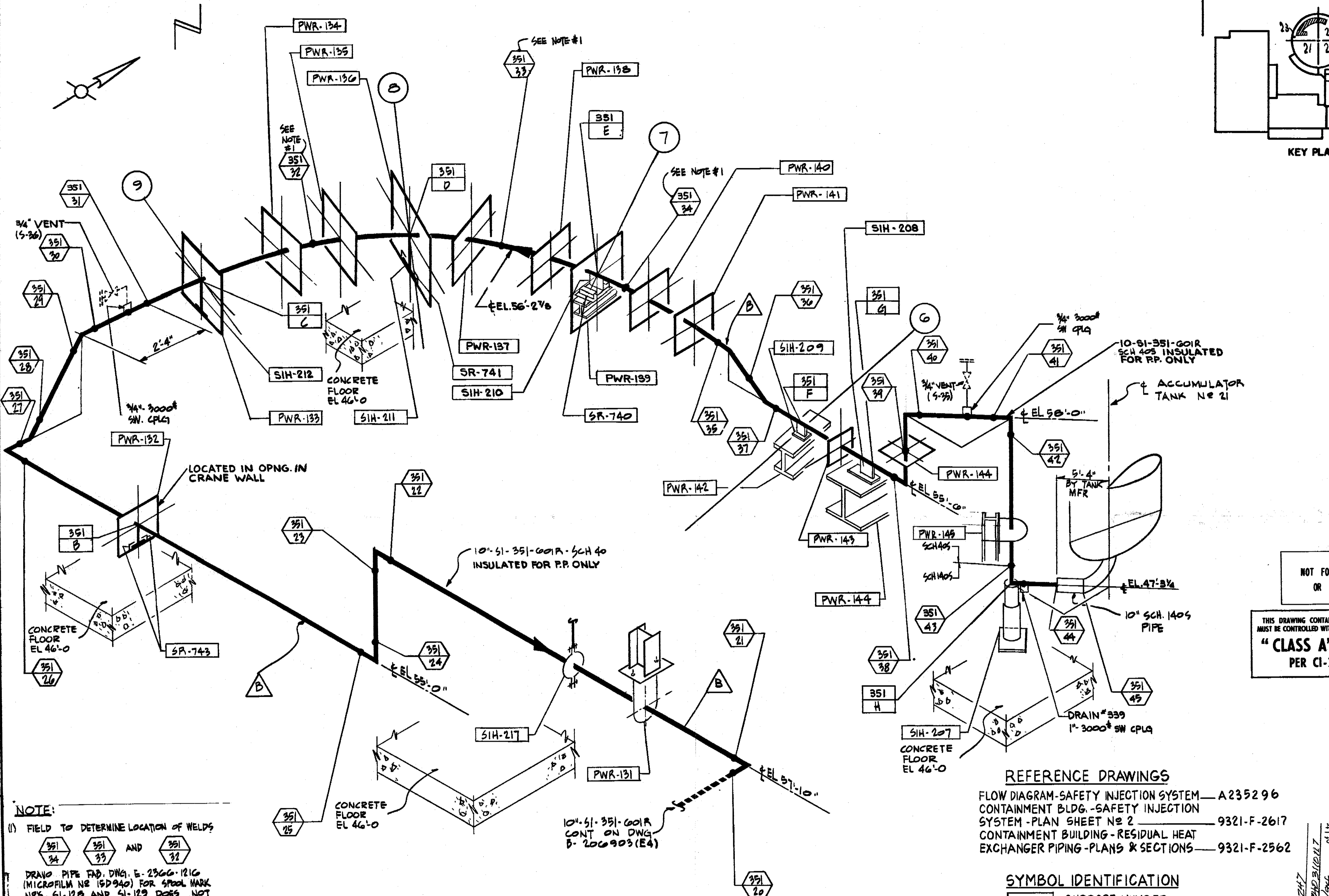
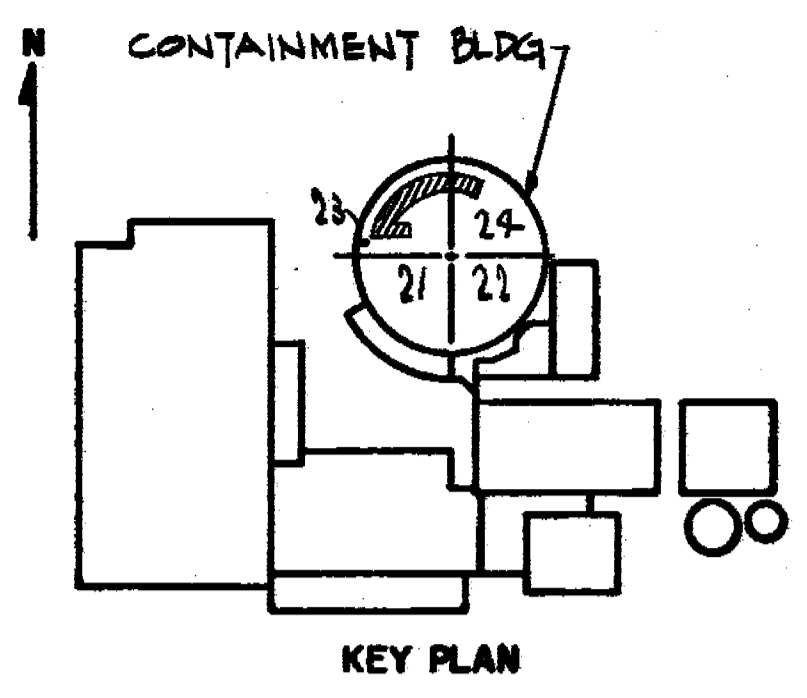


0	THIS ISSUE IS NON-CLASS 'A' PER CI-240-1. RELEASE FOR RECORD. P.N. 7076 11-3-78
1	THIS REVISION IS NON-CLASS 'A' PER CI-240-1. ADDED REF. DRAWING, UPDATED DWG. TO SHOW WORK ON DWG. 9321-F-2617, THRU REV. 22. ADDED LATEST REV. NO. TO REF. DWG'S. RELEASE FOR RECORD. P.N. 7076 RT/AS EBASCO SERVICES INC. 1-10-80
2	THIS REVISION IS NON-CLASS 'A' PER CI-240-1. ADDED LATEST REV. NO. TO REF. DWG'S. REMOVED SR-742. RELEASE FOR RECORD. P.N. 21368 TREADWELL CORP. 11-12-82.
3	THIS REV. IS NON CLASS PER CI-240-1 CHANGED DISCIPLINE CODE FROM MJ TO ML. RELEASE FOR RECORD P.N. 69911-E1 A.G.
4	THIS REVISION IS CLASS A PER CI-240-1 UPDATED DWG PER AS-BUILT INFORMATION AND SERVICE INSPECTION FIELD REVISION INFORMATION RELEASED FOR RECORD P/N 89982-AD-4 NPS 12-15-93 AAA



NOTE:
 (1) FIELD TO DETERMINE LOCATION OF WELDS
 351 24 AND 351 32
 DRAW PIPE FAB. DWG. E-2300-1216 (MICROFILM NO. 15D940) FOR SPOOL MARK NOS. 51-128 AND 51-129 DOES NOT LOCATE THESE WELDS.

TYPICAL WELD DETAIL DRAWINGS
 10" CLASS 2501, SCH 140S - D208023
 10" CLASS 601, SCH 40S - D208024

FOR GENERAL NOTES SEE
 DWG. B 206903



- REFERENCE DRAWINGS**
- FLOW DIAGRAM-SAFETY INJECTION SYSTEM—A235296
 - CONTAINMENT BLDG.-SAFETY INJECTION SYSTEM-PLAN SHEET NO 2—9321-F-2617
 - CONTAINMENT BUILDING-RESIDUAL HEAT EXCHANGER PIPING-PLANS & SECTIONS—9321-F-2562

- SYMBOL IDENTIFICATION**
- SUPPORT NUMBER
 - VALVE NUMBER
 - WELD NUMBER
 - QUALITY GROUP CLASSIFICATION
 - INTEGRAL SUPPORT WELD NUMBER

NOT FOR FABRICATION OR INSTALLATION
 THIS DRAWING CONTAINS ITEMS WHICH MUST BE CONTROLLED WITHIN CON EDISON A.S.
"CLASS A" ITEMS
 PER CI-240-1

NOT FOR FABRICATION OR INSTALLATION

B206902-4
CONSOLIDATED EDISON CO.
 OF NEW YORK, INC.

STATION LOCATION	INDIAN POINT NO 2		
INSERVICE INSPECTION	INSIDE CONTAINMENT BLDG. AT 19F2		
INSIDE CONTAINMENT BLDG. AT 19F2	ACCUMULATOR NO 21 DISCHARGE		
SCALE	NONE	DATE	11/2/88
BY	P. DENE	DATE	11/2/88
BY	M. STEINAUER	DATE	
DATE		DATE	

APPROVALS

GENERAL ENGINEERING	CHIEF DESIGN ENGINEER	[Signature]
MECHANICAL ENGINEERING	MECH. ENGINEER	[Signature]
CIVIL ENGINEERING	PLANT ENGINEER	[Signature]
ELECTRICAL ENGINEERING	T & D ENGINEER	[Signature]
QA & STEAM OPERATOR	STATION ELCT ENGINEER	[Signature]
PRODUCTION	T & D ENGINEER	[Signature]
	CONVENTIONAL POWER	[Signature]
	NUCLEAR POWER	[Signature]

Accession # 206902-4 of 1
 Date 2/28/94
 Regulatory Docket File