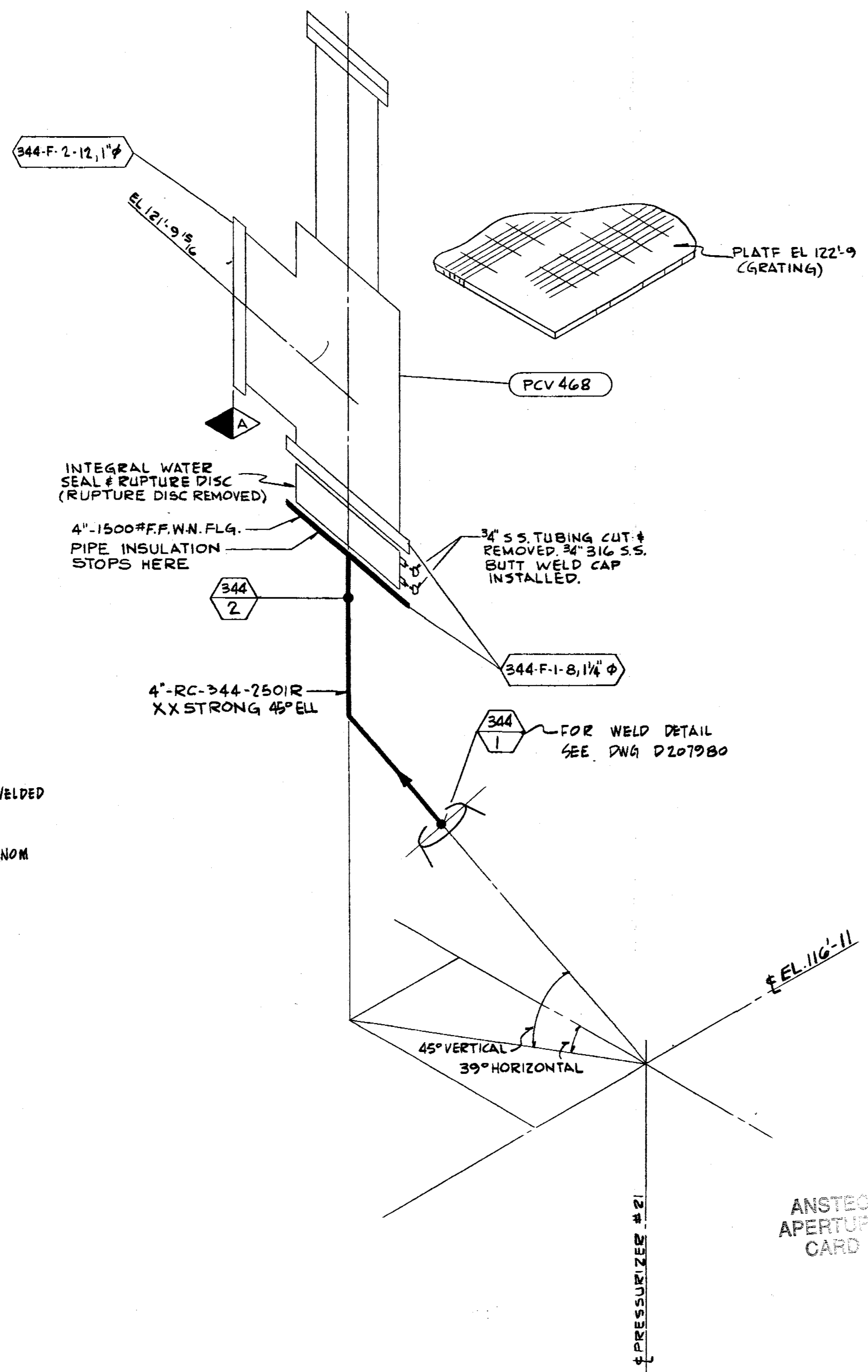
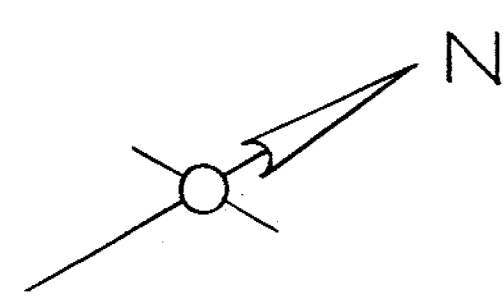


ISOMETRIC OF INDIAN POINT #2 REACTOR COOLANT LINE #344



- GENERAL NOTES**
1. WELDS LESS THAN 2 1/2" NOM PIPE DIA - SOCKET WELDED 2 1/2" AND LARGER - BUTT WELDED
  2. WELDS IN QUALITY GROUP A PIPING, ONE INCH NOM PIPE DIA. OR LESS, EXEMPT FROM N.D.T. REQUIREMENTS PER IWB-1220(b).
  3. (X) INDICATES REMOVABLE INSULATION

**VALVE BONNET BOLTING**

VALVE NO.	VALVE TYPE	NO. OF BOLTS	BOLT DIA.	BOLT TYPE	VALVE MANUFACTURER	MANUFACTURER DWG. NO.
PCV-468	4-RV58MSB	8		STUD BOLT	CROSBY	H-51250

NOT FOR FABRICATION OR INSTALLATION

THIS DRAWING CONTAINS ITEMS WHICH MUST BE CONTROLLED WITHIN CON EDISON AS:

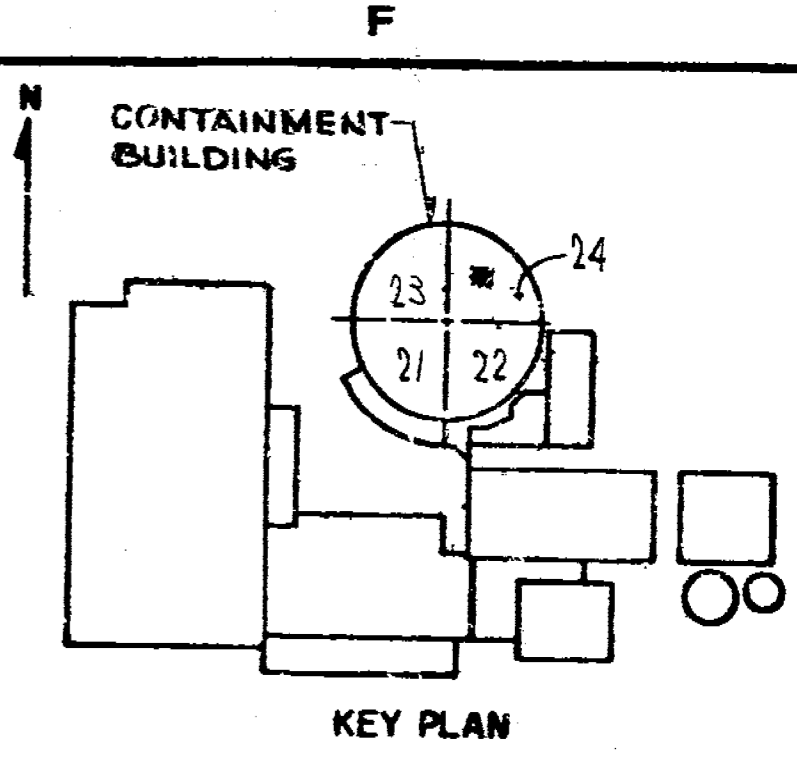
**"CLASS A" ITEMS**

PER CI-240-1

**REFERENCE DRAWINGS**

FLOW DIAGRAM  
 REACTOR COOLANT SYSTEM \_\_\_\_\_ 9321-F-2738  
 CONTAINMENT BUILDING  
 PRIMARY COOLANT PRESSURIZER  
 SAFETY RELIEF VALVE PIPING  
 SHEET NO. 1 \_\_\_\_\_ 9321-F-2545  
 CONTAINMENT BUILDING  
 PRIMARY COOLANT PRESSURIZER  
 SAFETY RELIEF VALVE PIPING  
 SHEET NO. 2 \_\_\_\_\_ 9321-F-2546

- SYMBOL IDENTIFICATION**
- FLANGE NUMBER, NUMBER OF BOLTS AND BOLT DIAMETER
  - VALVE NUMBER
  - WELD NUMBER
  - QUALITY GROUP CLASSIFICATION



**REVISIONS**

NO.	DATE	DESCRIPTION
0	11-3-78	THIS ISSUE IS NON-CLASS "A" PER CI 240-1. RELEASE FOR RECORD. P.N. 7076
1	1-10-80	THIS REVISION IS NON-CLASS "A" PER CI-240-1. ADDED LATEST REV. NO. TO REF. DWG'S. RELEASE FOR RECORD. P.N. 7076 / AS EBASCO SERVICES, INC.
2	11-12-82	THIS REVISION IS NON-CLASS "A" PER CI-240-1. ADDED LATEST REV. NO. TO REF. DWG'S. RELEASE FOR RECORD. P.N. 21368 TREADWELL CORP.
3	11-12-82	THIS REV. IS NON CLASS PER CI-240-1 CHANGED DISCIPLINE CODE FROM MJ TO ML. RELEASE FOR RECORD. P.N. 69911-EI
4	12-13-93	THIS REVISION IS CLASS "A" PER 240-1, UPDATED DWG. PER INSERVICE INSPECTION. FIELD REVISION INFORMATION RELEASE FOR RECORD. P.N. 69911-EI J.S.

**B206733-4**

**CONSOLIDATED EDISON CO.**  
OF NEW YORK, INC.

STATION LOCATION INDIAN POINT #2

INSERVICE INSPECTION

ISOMETRIC OF REACTOR COOLANT LINE NO 344 (PRESSURIZER SAFETY)

SCALE NONE

DRAWN BY W. ANDRUSHEK

CHECKED BY R. BROOKS

DATE 2/28/94

APPROVALS

GENERAL ENGINEERING	CHIEF DESIGNER
MECHANICAL ENGINEERING	MECH. ENGINEER
CIVIL ENGINEERING	T & S STRUCT. ENGINEER
ELECTRICAL ENGINEERING	STATION ELECT. ENGINEER
GAS & STEAM OPERATIONS	STRUCT. ENGINEER
PRODUCTION	CONVENTIONAL POWER
	NUCLEAR POWER

Docket # 50-247  
 Accession # 94031012  
 Date 2/28/94  
 Regulatory Docket File

